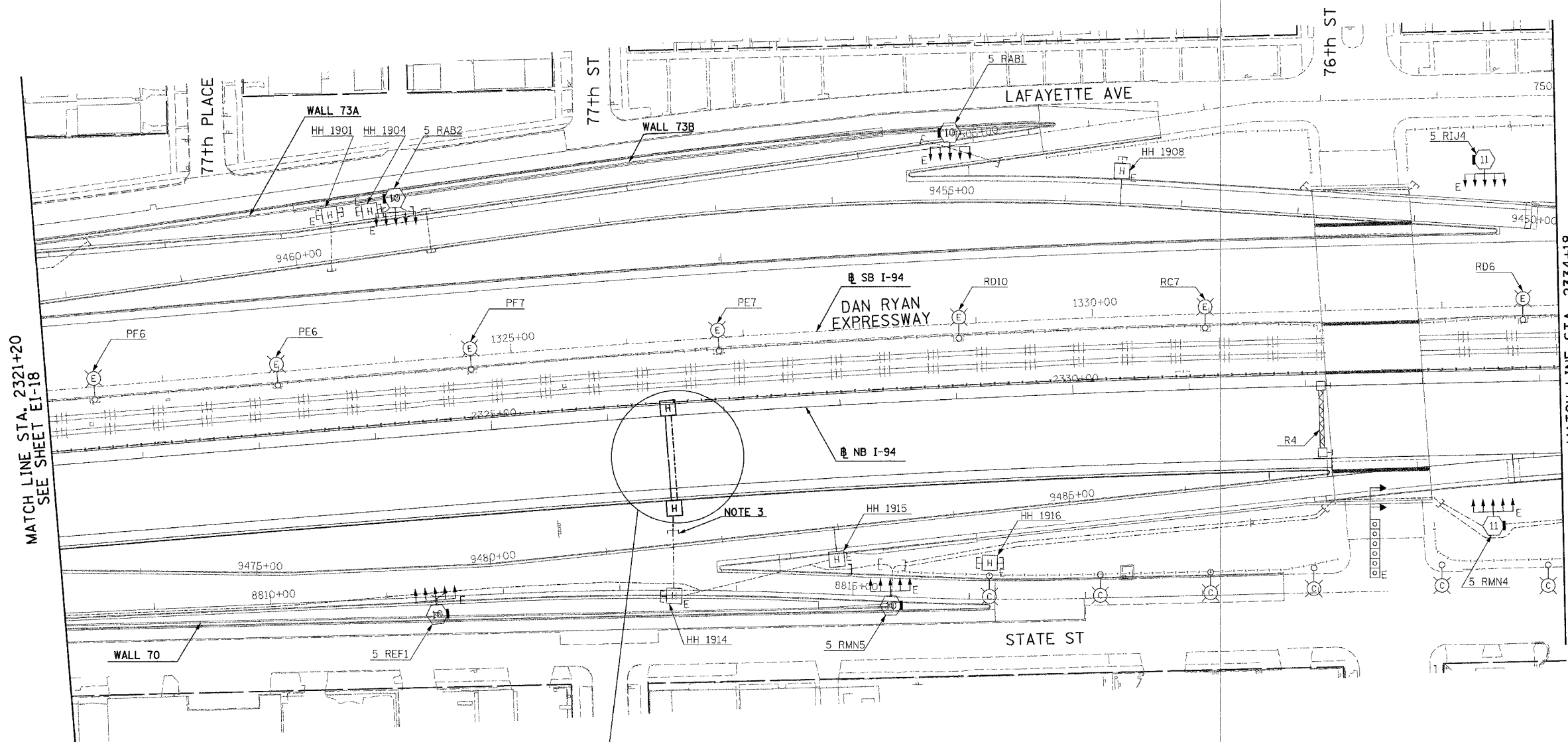


F.A.I. RTE.	SECTION	COUNTY	TOTAL SHEETS	SHEET NO.
94	1818 R-3	COOK	265	170
STA. 2321+20		TO STA. 2334+18		
FED. ROAD DIST. NO.	ILLINOIS	FED. AID PROJECT		

60B17

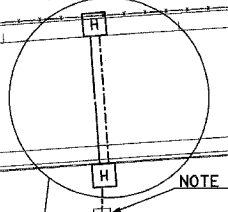
NOTES:

1. REFER TO SHEET EI-106 AND EI-110 FOR HANDHOLE DETAILS.
2. REFER TO SHEET EI-106 FOR HANDHOLE DETAILS. INSTALL HANDHOLE BEHIND CURB AS SHOWN ON SHEET EI-110.
3. CONNECT TO EXISTING 2" CONDUIT INSTALLED UNDER CONTRACT 62694.
4. REFER TO SHEET EI-115 FOR DETECTOR STATION LAYOUT.

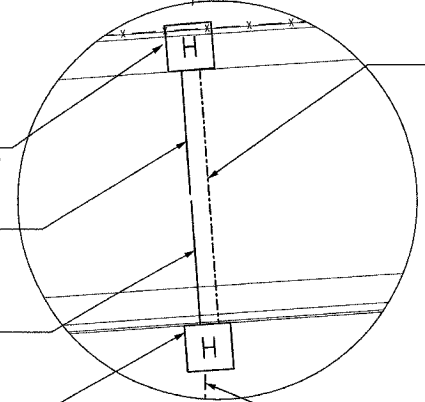


MATCH LINE STA. 2321+20
SEE SHEET EI-18

MATCH LINE STA. 2334+18
SEE SHEET EI-20



NOTE 3



2" RGC IN TRENCH
83 LF

HH 1911, TYPE S1
STA. 2326+52, IN SHOULDER,
NOTE 1

3" PVC CONCRETE ENCASED
40 LF

3" PVC CONCRETE ENCASED
41 LF

HH 1912, TYPE S1
STA. 2326+52, BEHIND CURB, NOTE 2

(1)-2" CNC IN TRENCH
12 LF



20C/EI-19

REVISIONS		
NAME	DATE	
REVISOR	5/06/05	

ILLINOIS DEPARTMENT OF TRANSPORTATION
F.A.I. 94 (DAN RYAN EXPRESSWAY)

ELECTRICAL INFRASTRUCTURE PLANS
PROPOSED IMPROVEMENTS
STA. 2321+20 TO STA. 2334+18

SCALE: 1"=50'
DATE: MARCH 7, 2006

DRAWN BY: VK
CHECKED BY: TM

SINGH 300 W. ADAMS ST.
CHICAGO, IL 60606
SINGH & ASSOCIATES, INC. TEL: (312) 629-0240
CONSULTING ENGINEERS FAX: (312) 629-8449

9-48:32 AM
3/7/2006