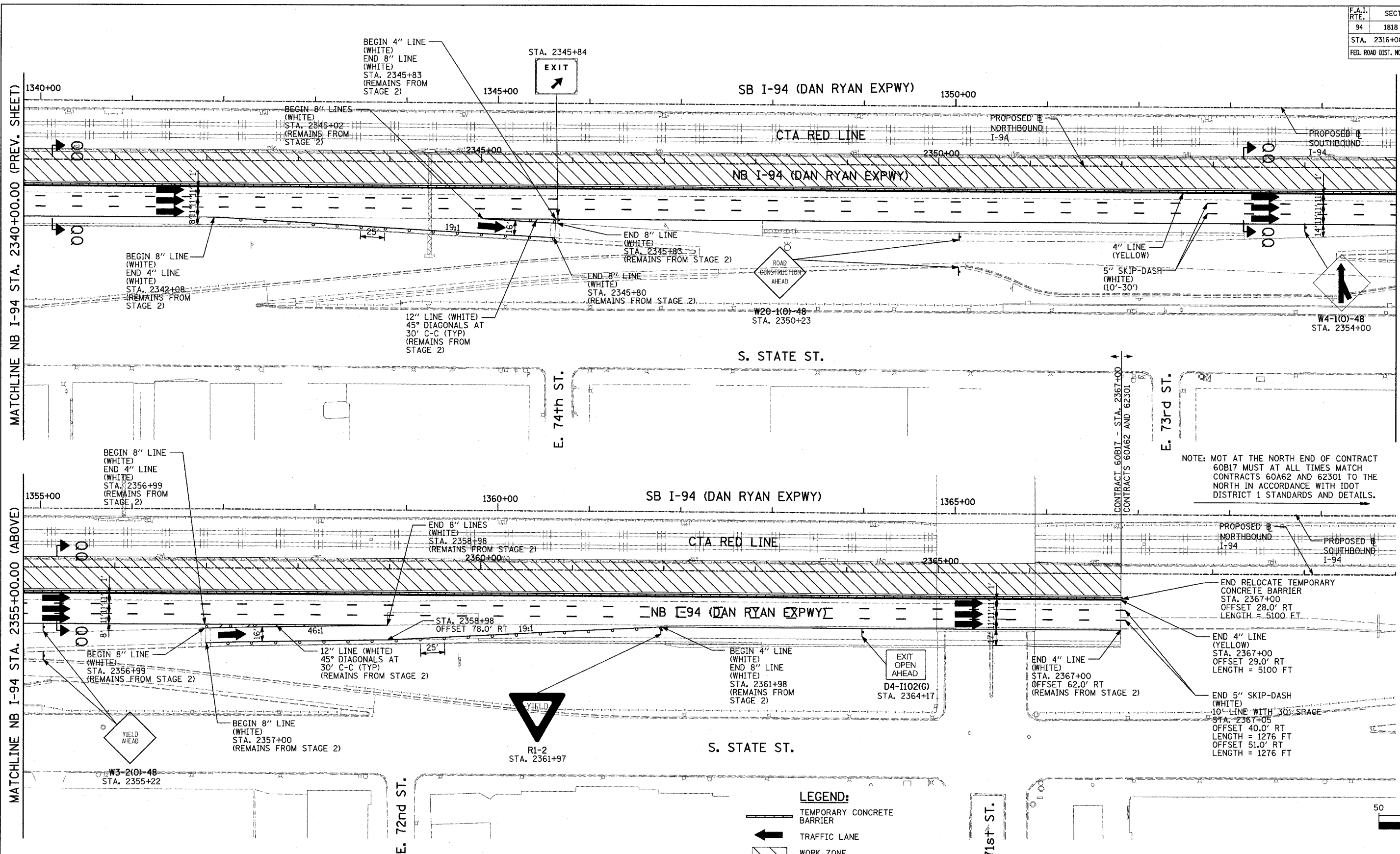


F.A.I. RTE.	SECTION	COUNTY	TOTAL SHEETS	SHEET NO.
94	1818 R-3	COOK	265	86
STA. 2316+00		TO STA. 2367+00		
FED. ROAD DIST. NO.		ILLINOIS	FED. AID PROJECT	

60B17

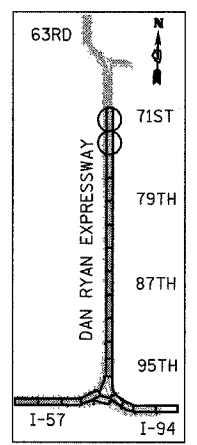


NOTE: MOT AT THE NORTH END OF CONTRACT 60B17 MUST AT ALL TIMES MATCH CONTRACTS 60A62 AND 62301 TO THE NORTH IN ACCORDANCE WITH IDOT DISTRICT 1 STANDARDS AND DETAILS.

MATCHLINE NB I-94 STA. 2355+00.00 (BELOW)

MATCHLINE NB I-94 STA. 2340+00.00 (PREV. SHEET)

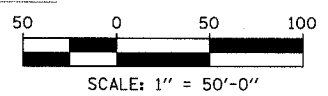
MATCHLINE NB I-94 STA. 2355+00.00 (ABOVE)



LOCATION MAP

LEGEND:

- TEMPORARY CONCRETE BARRIER
- TRAFFIC LANE
- WORK ZONE
- BARRICADE, TYPE III
- DRUM WITH MONO-DIRECTIONAL STEADY BURNING LIGHT
- ARROW BOARD
- TEMPORARY PAVEMENT



REVISIONS	
NAME	DATE

ILLINOIS DEPARTMENT OF TRANSPORTATION
 F.A.I. 94 (DAN RYAN EXPRESSWAY)
 MAINTENANCE OF TRAFFIC PLAN
 STAGE 3 - NB I-94
 NB I-94 STA. 2340+00 TO 2370+00
 SHEET 2 OF 2
 SCALE: 1"=50'-0"
 DATE: MARCH 7, 2006
 DRAWN BY: RTM
 CHECKED BY: JDF

TYLIN INTERNATIONAL