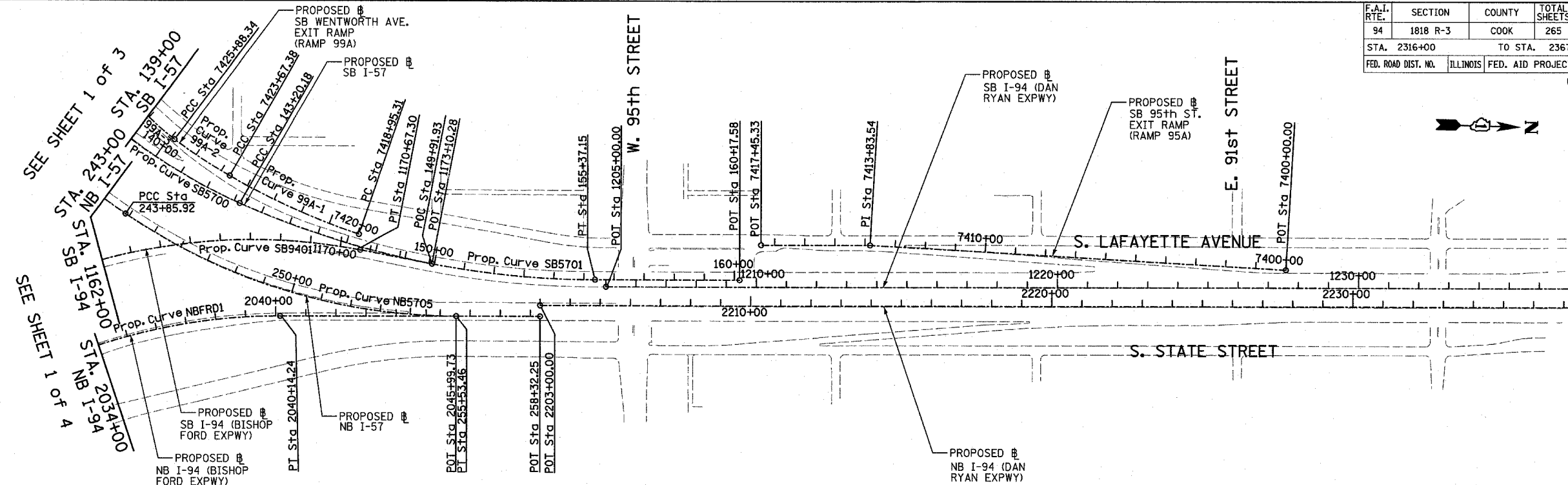


F.A.I. RTE.	SECTION	COUNTY	TOTAL SHEETS	SHEET NO.
94	1818 R-3	COOK	265	24
STA. 2316+00		TO STA. 2367+00		
FED. ROAD DIST. NO.		ILLINOIS FED. AID PROJECT		

60B17



Prop. Curve SB5700  
 P.I. STA = 133+70.06  
 N = 1,839,521.70  
 E = 1,177,054.03  
 $\Delta = 66^\circ 11' 55.15''$  (LT)  
 $D = 3^\circ 02' 10.83''$   
 R = 1,887.00  
 L = 2,180.21  
 E = 365.53  
 T = 1,230.09  
 P.C. STA = 121+39.97  
 N = 1,839,491.52  
 E = 1,175,824.31  
 P.T. STA = 143+20.18  
 N = 1,840,659.02  
 E = 1,177,522.68

Prop. Curve SB5701  
 P.I. STA = 149+37.75  
 N = 1,841,230.00  
 E = 1,177,757.97  
 $\Delta = 24^\circ 02' 07.49''$  (LT)  
 $D = 1^\circ 58' 30.13''$   
 R = 2,901.00  
 L = 1,216.96  
 E = 65.01  
 T = 617.56  
 P.C. STA = 143+20.18  
 N = 1,840,659.02  
 E = 1,177,522.68  
 P.T. STA = 155+37.15  
 N = 1,841,847.31  
 E = 1,177,740.29

Prop. Curve NBS705  
 P.I. STA = 249+87.51  
 N = 1,840,788.31  
 E = 1,177,892.02  
 $\Delta = 34^\circ 03' 37.98''$  (LT)  
 $D = 2^\circ 55' 02.28''$   
 R = 1,964.00  
 L = 1,167.54  
 E = 90.07  
 T = 601.59  
 P.C. STA = 243+85.92  
 N = 1,840,280.48  
 E = 1,177,569.49  
 P.T. STA = 255+53.46  
 N = 1,841,389.65  
 E = 1,177,874.80

Prop. Curve SB9401  
 P.I. STA = 1160+15.97  
 N = 1,838,783.95  
 E = 1,177,299.83  
 $\Delta = 100^\circ 48' 58.07''$  (RT)  
 $D = 2^\circ 59' 59.20''$   
 R = 1,910.00  
 L = 3,360.79  
 E = 1,086.95  
 T = 2,309.46  
 P.C. STA = 1137+06.52  
 N = 1,838,851.99  
 E = 1,179,608.28  
 P.T. STA = 1170+67.30  
 N = 1,841,064.16  
 E = 1,177,666.20

SB I-94 (DAN RYAN EXPWY)  
 POT STA = 1205+00.00  
 N = 1,841,884.04  
 E = 1,177,763.25

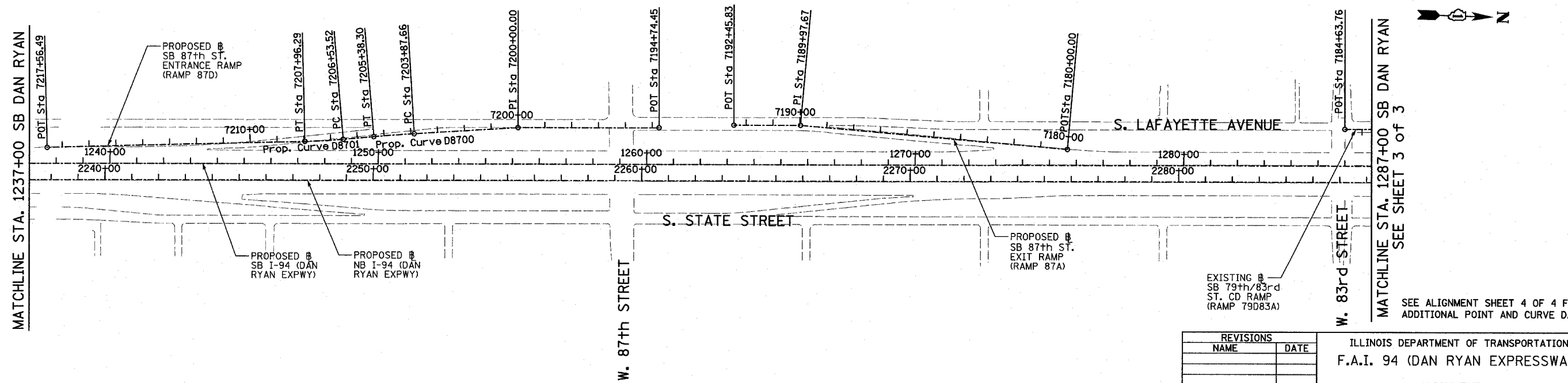
SB I-57  
 POT STA = 160+17.58  
 N = 1,842,327.55  
 E = 1,177,726.54

SB I-94 (BISHOP FORD EXPWY)  
 POT STA = 1173+10.28  
 N = 1,841,304.06  
 E = 1,177,704.74

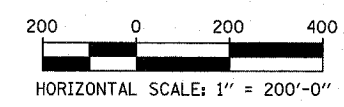
NB I-57  
 POT STA = 258+32.25  
 N = 1,841,668.33  
 E = 1,177,866.82

NB I-94 (BISHOP FORD EXPWY)  
 POT STA = 2045+99.73  
 N = 1,841,389.65  
 E = 1,177,874.80

NB I-94 (DAN RYAN EXPWY)  
 POT STA = 2203+00.00  
 N = 1,841,667.31  
 E = 1,177,830.83



TYLIN INTERNATIONAL



REVISIONS	
NAME	DATE

ILLINOIS DEPARTMENT OF TRANSPORTATION  
 F.A.I. 94 (DAN RYAN EXPRESSWAY)  
 ALIGNMENT  
 SHEET 2 OF 4  
 SCALE: 1"=200'  
 DATE: MARCH 7, 2006  
 DRAWN BY: JPM  
 CHECKED BY: DAK

SEE ALIGNMENT SHEET 4 OF 4 FOR ADDITIONAL POINT AND CURVE DATA