

FOR INDEX OF SHEETS, SEE SHEET NO. 2  
 FOR INDEX OF HIGHWAY STANDARDS SEE SHEET NO. 2

04-27-2018 LETTING ITEM 167

STATE OF ILLINOIS  
 DEPARTMENT OF TRANSPORTATION

# PLANS FOR PROPOSED FEDERAL AID HIGHWAY

FAU ROUTE 164 (MOLIDOR ROAD)  
 TOWNSHIP CENTER TO FISH LAKE ROAD  
 MULTI-USE PATH, CURB AND  
 GUTTER, AND DRAINAGE  
 SECTION: 10-00001-00-BT  
 PROJECT: PPDV(181)  
 GRANT TOWNSHIP  
 LAKE COUNTY  
 C-91-157-18

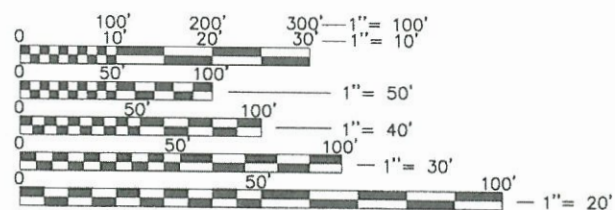
FAU RTE.	SECTION	COUNTY	TOTAL SHEETS	SHEET NO.
164	10-00001-00-BT	LAKE	25	1
				CONTRACT # 61E66
ILLINOIS FED. AID PROJECT				

**TRAFFIC DATA**

**MOLIDOR ROAD**  
 FUNCTION CLASS: MAJOR COLLECTOR  
 POSTED SPEED LIMIT = 40 MPH  
 ADT 2,000 (2015)

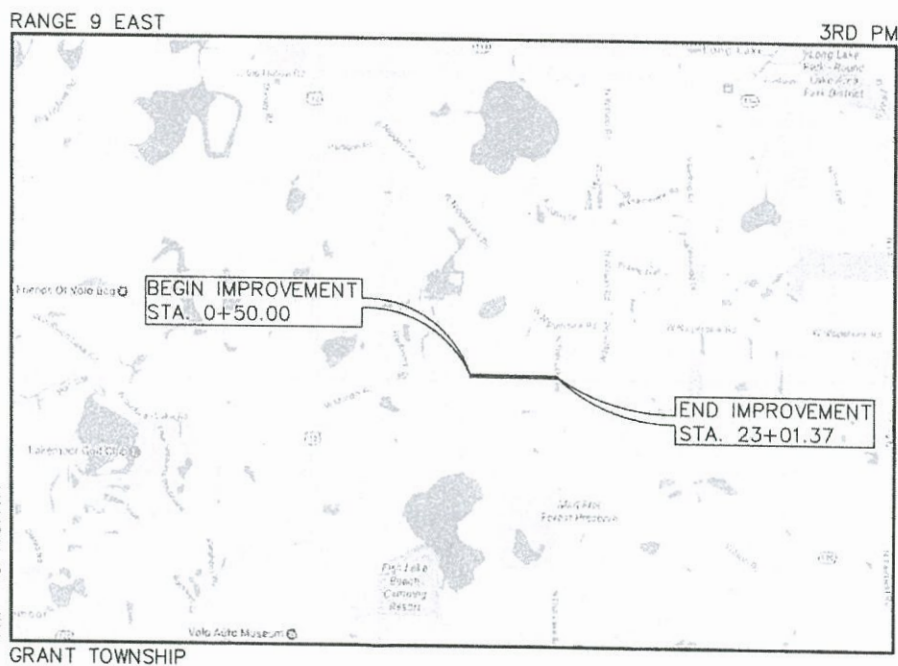


LOCATION OF SECTION INDICATED THUS: ———



FULL SIZE PLANS HAVE BEEN PREPARED USING STANDARD ENGINEERING SCALES. REDUCED SIZED PLANS WILL NOT CONFORM TO STANDARD SCALES. IN MAKING MEASUREMENTS ON REDUCED PLANS, THE ABOVE SCALES MAY BE USED.

**J.U.L.I.E.**  
 JOINT UTILITY LOCATION INFORMATION FOR EXCAVATION  
 1-800-892-0123  
 OR 811



**LOCATION MAP**  
 (Not to Scale)



SIGNED: *[Signature]*  
 Mark A. Coleman Jr., Engineer  
 DATE: 2-14-18  
 EXP. 11/30/2019

STATE OF ILLINOIS  
 DEPARTMENT OF TRANSPORTATION

Approved: *[Signature]* FEBRUARY 14, 2018  
 Kim Kiegen, Grant Township Highway Commissioner

Passed: *[Signature]* FEBRUARY 21, 2018  
 District One Engineer of Local Roads & Streets

Releasing for Bid Based on Limited Review: FEBRUARY 21, 2018  
*[Signature]*  
 Regional Engineer

GROSS LENGTH = 2,455.35 FEET = (0.465 MILES)  
 NET LENGTH = 2,455.35 FEET = (0.465 MILES)

**GHA GEWALT HAMILTON ASSOCIATES, INC.**  
 625 Forest Edge Drive • Vernon Hills, IL 60061  
 TEL 847.478.9700 • FAX 847.478.9701  
 GHA JOB # 4052.900

PRINTED BY THE AUTHORITY  
 OF THE STATE OF ILLINOIS

CONTRACT NO. 61E66

PROGRAM AND OFFICE ENGINEER: CHARLES RIDDLE, P.E. (847) 705-4406 SCHAUMBURG, IL





SUMMARY OF QUANTITIES					CONSTRUCTION CODE		
SP	*	CODE NO.	ITEM	UNIT	TOTAL QUANTITY	SAFETY IMPROVEMENT 002\$	LANDSCAPING 031
		20100210	TREE REMOVAL (OVER 15 UNITS DIAMETER)	UNIT	94	94	
*		20101100	TREE TRUNK PROTECTION	EACH	11	11	
*		20101200	TREE ROOT PRUNING	EACH	11	11	
*		20101400	NITROGEN FERTILIZER NUTRIENT	POUND	68	68	
*		20101500	PHOSPHORUS FERTILIZER NUTRIENT	POUND	68	68	
*		20101600	POTASSIUM FERTILIZER NUTRIENT	POUND	68	68	
*		20101700	SUPPLEMENTAL WATERING	UNIT	3	3	
		20200100	EARTH EXCAVATION	CU YD	110	110	
		20201200	REMOVAL AND DISPOSAL OF UNSUITABLE MATERIAL	CU YD	215	215	
		20400800	FURNISHED EXCAVATION	CU YD	660	660	
		20800150	TRENCH BACKFILL	CU YD	220	220	
		21101505	TOPSOIL EXCAVATION AND PLACEMENT	CU YD	485	485	
		21400100	GRADING AND SHAPING DITCHES	FOOT	100	100	
*		25000210	SEEDING, CLASS 2A	ACRE	1	1	
*		25000400	NITROGEN FERTILIZER NUTRIENT	POUND	48	48	
*		25000500	PHOSPHORUS FERTILIZER NUTRIENT	POUND	48	48	
*		25000600	POTASSIUM FERTILIZER NUTRIENT	POUND	48	48	
*		25100630	EROSION CONTROL BLANKET	SQ YD	2,585	2,585	
		28000305	TEMPORARY DITCH CHECKS	FOOT	98	98	
		28000400	PERIMETER EROSION BARRIER	FOOT	860	860	
		28000500	INLET AND PIPE PROTECTION	EACH	6	6	
		28000510	INLET FILTERS	EACH	8	8	
		30300112	AGGREGATE SUBGRADE IMPROVEMENT 12"	SQ YD	262	262	
		35101800	AGGREGATE BASE COURSE, TYPE B 6"	SQ YD	1,836	1,836	
		35300200	PORTLAND CEMENT CONCRETE BASE COURSE 7"	SQ YD	250	250	
		40600275	BITUMINOUS MATERIALS (PRIME COAT)	POUND	4,590	4,590	
		40600290	BITUMINOUS MATERIALS (TACK COAT)	POUND	46	46	
		40603080	HOT-MIX ASPHALT BINDER COURSE, IL-19.0, N50	TON	47	47	
		40603335	HOT-MIX ASPHALT SURFACE COURSE, MX "D", N50	TON	370	370	
		42400200	PORTLAND CEMENT CONCRETE SIDEWALK 5 INCH	SQ FT	587	587	

SP - SPECIAL PROVISION \* SPECIALTY ITEM

SUMMARY OF QUANTITIES					CONSTRUCTION CODE		
SP	*	CODE NO.	ITEM	UNIT	TOTAL QUANTITY	SAFETY IMPROVEMENT 002\$	LANDSCAPING 031
		42400800	DETECTABLE WARNINGS	SO FT	132	132	
		44000100	PAVEMENT REMOVAL	SQ YD	250	250	
		44000200	DRIVEWAY PAVEMENT REMOVAL	SQ YD	205	205	
		44000300	CURB REMOVAL	FOOT	50	50	
		44000500	COMBINATION CURB AND GUTTER REMOVAL	FOOT	50	50	
		44000600	SIDEWALK REMOVAL	SQ FT	306	306	
		48301000	PROTECTIVE COAT	SQ YD	387	387	
		50105220	PIPE CULVERT REMOVAL	FOOT	35	35	
		54213657	PRECAST REINFORCED CONCRETE FLARED END SECTIONS 12"	EACH	4	4	
		550A0340	STORM SEWERS, CLASS A, TYPE 2 12"	FOOT	1,498	1,498	
		55100500	STORM SEWER REMOVAL 12"	FOOT	142	142	
		55101200	STORM SEWER REMOVAL 24"	FOOT	63	63	
		60201330	CATCH BASINS, TYPE A, 4'-DIAMETER, TYPE 23 FRAME AND GRATE	EACH	7	7	
		60218400	MANHOLES, TYPE A, 4' DIA., TYPE 1 FRAME AND CLOSED LID	EACH	2	2	
		60237460	INLETS, TYPE A, TYPE 23 FRAME AND GRATE	EACH	1	1	
		60250500	CATCH BASIN TO BE ADJUSTED WITH NEW TYPE 1 FRAME, CLOSED LID	EACH	1	1	
		60300305	FRAMES AND LIDS TO BE ADJUSTED	EACH	1	1	
		60600095	CLASS SI CONCRETE (OUTLET)	CU YD	2	2	
		60603800	COMBINATION CONCRETE CURB AND GUTTER, TYPE B-6.12	FOOT	1,389	1,389	
		67100100	MOBILIZATION	LSUM	1	1	
SP		70100450	TRAFFIC CONTROL AND PROTECTION, STANDARD 701201	LSUM	1	1	
SP		70102620	TRAFFIC CONTROL AND PROTECTION, STANDARD 701501	LSUM	1	1	
SP		70102640	TRAFFIC CONTROL AND PROTECTION, STANDARD 701801	LSUM	1	1	
*		78000600	THERMOPLASTIC PAVEMENT MARKING - LINE 12"	FOOT	445	445	
SP		X0326657	RELOCATE SIGN, SPECIAL	EACH	1	1	
		X0327979	PAVEMENT MARKING REMOVAL - GRINDING	SQ FT	34	34	
SP		X6026050	SANITARY MANHOLES TO BE ADJUSTED	EACH	1	1	
SP		Z0013798	CONSTRUCTION LAYOUT	LSUM	1	1	
SP		Z0051500	REMOVING AND RESETTING STREET SIGNS	EACH	2	2	
*		A2007116	TREE, QUERCUS RUBRA (RED OAK), 2" CALIPER, BALLED AND BURLAPPED	EACH	3		3

SP - SPECIAL PROVISION \* SPECIALTY ITEM

FILE NAME = 052,900.DT.dwg



USER NAME = ZACH WALLSTEN  
 PLOT SCALE = 1" = .0833'  
 PLOT DATE = 4/28/2017

DESIGNED - MAC  
 DRAWN - ZCW  
 CHECKED - MAC  
 DATE -

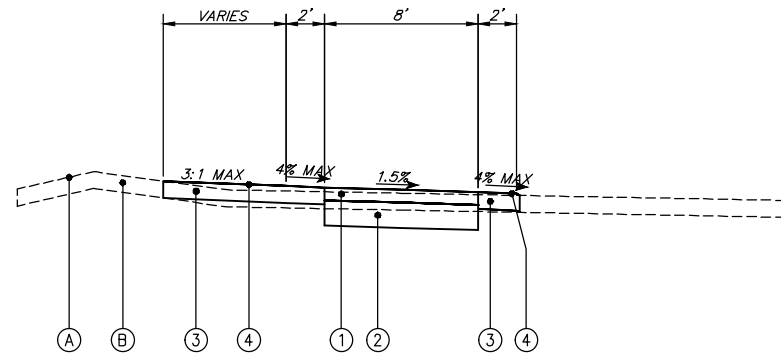
REVISED -  
 REVISED -  
 REVISED -  
 REVISED -

**STATE OF ILLINOIS  
 DEPARTMENT OF TRANSPORTATION**

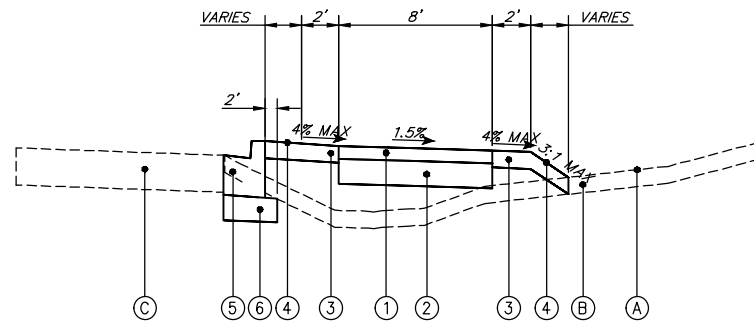
**SUMMARY OF QUANTITIES  
 MOLITOR ROAD BIKE PATH**

FAU. RTE 164	SECTION 10-00001-00-BT	COUNTY LAKE	TOTAL SHEETS 25	SHEET NO. 3
CONTRACT #: 61E66				
ILLINOIS FED. AID PROJECT				

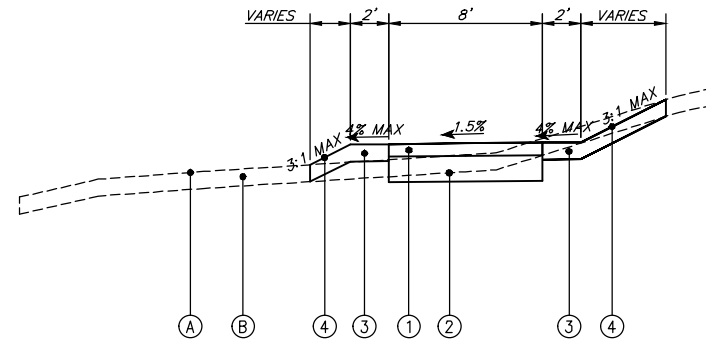
SCALE: NONE SHEET NO. 1 OF 1 SHEETS STA. TO STA.



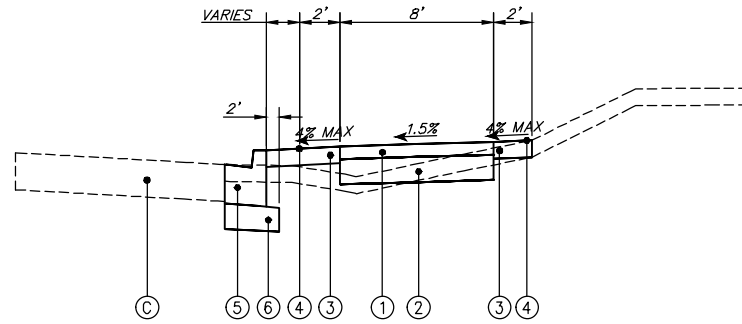
EXISTING / PROPOSED TYPICAL SECTION  
STA. 0+50 TO STA. 3+91



EXISTING / PROPOSED TYPICAL SECTION  
STA. 7+75 TO STA. 14+88



EXISTING / PROPOSED TYPICAL SECTION  
STA. 3+91 TO STA. 7+00

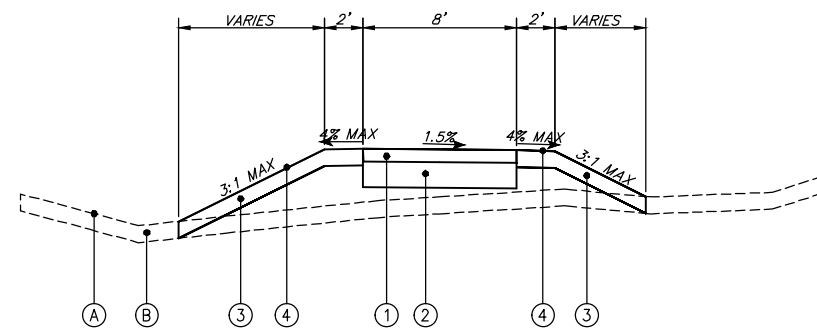


EXISTING / PROPOSED TYPICAL SECTION  
STA. 15+30 TO STA. 23+01.37

NOTE:  
1. THE LIMITS OF UNSUITABLE SOIL REMOVAL HAVE BEEN ESTIMATED. THE LIMITS OF UNDERCUT WILL BE VERIFIED OR RE-ESTABLISHED DURING CONSTRUCTION BY THE ENGINEER BASED ON ACTUAL FIELD CONDITIONS. THE PLAN QUANTITIES ARE ESTIMATED AND ANY ADDITIONS OR SUBTRACTIONS RESULTING FROM THE CHANGE IN LIMITS OF UNDERCUTTING SHALL BE MADE BY THE ENGINEER. THE CONTRACTOR WILL BE PAID FOR THE ACTUAL QUANTITY OF WORK PERFORMED.

HOT-MIX ASPHALT MIXTURE REQUIREMENTS	
MIXTURE TYPE	AIR VOIDS @ Ndes
BIKE PATH	
HOT-MIX ASPHALT SURFACE COURSE, MIX 'D', N50 (IL 9.5 mm), 3"	4% @ 50 GYR
HMA DRIVEWAY	
HOT-MIX ASPHALT SURFACE COURSE, MIX 'D', N50 (IL 9.5 mm), 2"	4% @ 50 GYR
HOT-MIX ASPHALT BINDER COURSE, IL-19.0, N50, 4"	4% @ 50 GYR

THE UNIT WEIGHT TO CALCULATE ALL HMA SURFACE MIXTURE QUANTITIES IS 112 LBS/SY/IN  
THE "AC TYPE" FOR NON-POLYMERIZED HMA SHALL BE "PG 64-22" UNLESS OTHERWISE MODIFIED BY DISTRICT ONE SPECIAL PROVISIONS.  
FOR "PERCENT OF RAP" SEE DISTRICT ONE SPECIAL PROVISIONS.



EXISTING / PROPOSED TYPICAL SECTION  
STA. 7+00 TO STA. 7+75

**TYPICAL CROSS SECTION LEGEND**

- NO. DESCRIPTION
- (A) EXISTING GROUND
- (B) EXISTING TOPSOIL, 4"
- (C) EXISTING PAVEMENT
- (1) PROPOSED HMA SURFACE COURSE, MIX "D", N50, 3"
- (2) PROPOSED AGGREGATE BASE COURSE, TYPE B, 6"
- (3) PROPOSED TOPSOIL, 4"
- (4) PROPOSED RESTORATION (SEEDING CLASS 2A, EROSION CONTROL BLANKET, AND NUTRIENTS)
- (5) PROPOSED COMBINATION CONCRETE CURB & GUTTER, B6.12
- (6) PROPOSED AGGREGATE SUBGRADE IMPROVEMENT, 12"

FILE NAME = 4052.900\_PRES.dwg

	USER NAME = ZACH WALLSTEN	DESIGNED - MAC	REVISED -	<p align="center"><b>STATE OF ILLINOIS DEPARTMENT OF TRANSPORTATION</b></p>	<p align="center"><b>TYPICAL SECTIONS MOLDOR ROAD BIKE PATH</b></p>		FAU RTE.	SECTION	COUNTY	TOTAL SHEETS	SHEET NO.
	PLOT SCALE = 1" = .0833'	DRAWN - ZCW	REVISED -				164	10-00001-00-BT	LAKE	25	4
PLOT DATE = 4/28/2018 12:58 PM	CHECKED - MAC	REVISED -	REVISED -	SCALE NONE	SHEET NO. 1 OF 1 SHEETS	STA. TO STA.	ILLINOIS FED. AID PROJECT		CONTRACT #	61E66	
	DATE -	REVISED -	REVISED -								



STATION	DISTANCE	EARTH EXCAVATION END AREAS (SQ FT)		TOPSOIL PLACEMENT (SQ FT)		UNSUITABLE EXCAVATION (SQ FT)	EARTH EXCAVATION AVERAGE END AREA (SQ FT)		TOPSOIL PLACEMENT AVERAGE END AREA (SQ FT)		UNSUITABLE EXCAVATION AVG END AREA (SQ FT)	EARTH EXCAVATION SECTION VOLUMES (CU YD)		TOPSOIL PLACEMENT SECTION VOLUMES (CU YD)		UNSUITABLE EXCAVATION CUMULATIVE VOLUMES (CU YD)	EARTH EXCAVATION CUMULATIVE VOLUMES (CU YD)		TOPSOIL PLACEMENT CUMULATIVE VOLUMES (CU YD)		CUMULATIVE EARTHWORK BALANCE WASTE (+) OR SHORTAGE (-)	CUMULATIVE TOPSOIL BALANCE WASTE (+) OR SHORTAGE (-)	
		CUT	FILL	CUT	FILL		CUT	FILL	CUT	FILL		CUT	FILL	CUT	FILL		CUT	FILL	CUT	FILL			CUT
0+50.00		7.02	0.17	5.55	2.89																		
0+75.00	25.00	16.90					11.96	0.09	2.78	1.44	0.00	11.08	0.08	2.57	1.34	0.00	11.08	0.08	2.57	1.34		11.00	1.23
1+00.00	25.00	9.85	0.20	2.64	0.86		13.38	0.10	1.32	0.43	0.00	12.39	0.09	1.22	0.40	0.00	23.46	0.17	3.79	1.73		23.29	2.06
1+50.00	50.00	2.14	0.77	4.41	1.74		6.00	0.48	3.52	1.30	0.00	11.11	0.90	6.53	2.41	0.00	34.57	1.07	10.32	4.14		33.50	6.18
2+00.00	50.00	2.04	3.64	9.63	6.96		2.09	2.21	7.02	4.35	0.00	3.87	4.09	13.00	8.06	0.00	38.44	5.16	23.32	12.20		33.28	11.12
2+50.00	50.00	2.12	4.74	10.91	8.24		2.08	4.19	10.27	7.60	0.00	3.85	7.76	19.02	14.08	0.00	42.29	12.92	42.34	26.28		29.37	16.06
3+00.00	50.00	2.07	2.86	7.99	5.32		2.10	3.80	9.45	6.78	0.00	3.88	7.03	17.50	12.56	0.00	46.17	19.95	59.84	38.84		26.22	21.00
3+50.00	50.00	4.65	1.54	6.76	4.09		3.36	2.20	7.37	4.71	0.00	6.22	4.07	13.66	8.72	0.00	52.39	24.02	73.49	47.56		28.37	25.93
4+00.00	50.00	2.50	4.58	11.17	8.50		3.57	3.06	8.96	6.30	0.00	6.62	5.66	16.60	11.66	0.00	59.01	29.68	90.09	59.22		29.33	30.87
4+50.00	50.00	1.70	6.17	11.09	8.42		2.10	5.37	11.13	8.46	0.00	3.89	9.95	20.61	15.67	0.00	62.89	39.63	110.70	74.89		23.26	35.81
5+00.00	50.00		4.50	6.15	3.48		0.85	5.34	8.62	5.95	0.00	1.57	9.88	15.96	11.02	0.00	64.47	49.51	126.66	85.91		14.95	40.75
5+50.00	50.00	9.00	1.20				4.50	2.85	3.07	1.74	0.00	8.33	5.28	5.69	3.22	0.00	72.80	54.79	132.35	89.13		18.01	43.22
6+00.00	50.00	0.12	0.99	4.14	1.97		4.56	1.10	2.07	0.99	0.00	8.45	2.03	3.83	1.83	0.00	81.25	56.82	136.19	90.96		24.43	45.22
6+50.00	50.00	1.25	1.79	4.98	2.31		0.69	1.39	4.56	2.14	0.00	1.27	2.58	8.45	3.97	0.00	82.52	59.39	144.63	94.93		23.13	49.70
7+00.00	50.00	2.07	0.90	4.64	1.97		1.66	1.34	4.81	2.14	0.00	3.08	2.49	8.91	3.97	0.00	85.60	61.88	153.54	98.90		23.72	54.64
7+50.00	50.00	7.14		6.27	3.61		4.61	0.45	5.46	2.79	0.00	8.53	0.83	10.10	5.17	0.00	94.13	62.71	163.64	104.07		31.42	59.58
8+00.00	50.00	0.22	8.99	7.34	4.68		3.68	4.49	6.81	4.14	0.00	6.82	8.32	12.61	7.67	0.00	100.95	71.03	176.25	111.74		29.92	64.51
8+50.00	50.00		30.92	9.82	7.15		0.11	19.95	8.58	5.92	0.00	0.20	36.95	15.89	10.95	0.00	101.15	107.98	192.14	122.69		-6.83	69.45
9+00.00	50.00		19.51	8.11	5.45		0.00	25.22	8.97	6.30	0.00	0.00	46.69	16.61	11.67	0.00	101.15	154.68	208.75	134.36		-53.52	74.39
9+25.00	25.00		14.64	7.31	3.89		0.00	17.08	7.71	4.67	0.00	0.00	15.81	7.14	4.32	0.00	101.15	170.49	215.89	138.68		-69.33	77.21
9+50.00	25.00		12.51	5.70	3.04		0.00	13.57	6.50	3.46	0.00	0.00	12.57	6.02	3.21	0.00	101.15	183.06	221.91	141.89		-81.90	80.02
10+00.00	50.00		12.74	5.87	2.67		0.00	12.63	5.78	2.85	0.00	0.00	23.38	10.71	5.29	0.00	101.15	206.44	232.63	147.18		-105.29	85.45
10+50.00	50.00		16.11	6.22	3.02		0.00	14.43	6.04	2.85	0.00	0.00	26.71	11.19	5.27	0.00	101.15	233.15	243.81	152.45		-132.00	91.37
11+00.00	50.00		20.57	6.08	2.90		0.00	18.34	6.15	2.96	0.00	0.00	33.96	11.39	5.48	0.00	101.15	267.11	255.20	157.93		-165.96	97.27
11+50.00	50.00		18.36	6.05	2.86		0.00	19.46	6.07	2.88	0.00	0.00	36.04	11.23	5.33	0.00	101.15	303.16	266.43	163.25		-202.00	103.18
12+00.00	50.00		14.99	5.84	2.67		0.00	16.67	5.94	2.76	0.00	0.00	30.88	11.01	5.12	0.00	101.15	334.03	277.44	168.37		-232.88	109.07
12+50.00	50.00		18.73	8.87	2.98		0.00	16.86	7.35	2.83	0.00	0.00	31.22	13.62	5.23	0.00	101.15	365.26	291.06	173.60		-264.10	117.46
13+00.00	50.00		15.80	5.84	2.64		0.00	17.27	7.35	2.81	0.00	0.00	31.97	13.62	5.21	0.00	101.15	397.23	304.68	178.81		-296.08	125.87
13+50.00	50.00		15.17	5.83	2.63		0.00	15.48	5.83	2.64	0.00	0.00	28.67	10.80	4.88	0.00	101.15	425.90	315.48	183.70		-324.75	131.78
14+00.00	50.00	0.51	16.52	6.17	3.74		0.26	15.84	6.00	3.18	0.00	0.47	29.34	11.11	5.90	0.00	101.63	455.24	326.59	189.60		-353.62	137.00
14+50.00	50.00		20.85	5.82	3.44		0.26	18.69	5.99	3.59	0.00	0.47	34.61	11.10	6.64	0.00	102.10	489.85	337.69	196.24		-387.75	141.45
15+00.00	50.00		23.19	5.88	3.53		0.00	22.02	5.85	3.49	0.00	0.00	40.78	10.83	6.45	0.00	102.10	530.63	348.52	202.69		-428.53	145.83
15+50.00	50.00		27.14	5.71	3.39		0.00	25.16	5.79	3.46	0.00	0.00	46.60	10.73	6.41	0.00	102.10	577.23	359.25	209.11		-475.13	150.15
16+00.00	50.00		16.59	5.27	2.95		0.00	21.86	5.49	3.17	0.00	0.00	40.49	10.17	5.87	0.00	102.10	617.72	369.42	214.98		-515.62	154.44
16+50.00	50.00	0.01	2.73	3.25	0.92		0.00	9.66	4.26	1.94	0.00	0.01	17.88	7.90	3.59	0.00	102.11	635.60	377.32	218.57		-533.49	158.75
17+50.00	100.00	0.23	5.49	4.19	2.14		0.12	4.11	3.72	1.53	0.00	0.44	15.22	13.78	5.67	0.00	102.55	650.83	391.10	224.23		-548.27	166.87
18+00.00	50.00	0.39	4.98	4.17	2.14		0.31	5.24	4.18	2.14	0.00	0.58	9.70	7.73	3.96	0.00	103.13	660.52	398.84	228.20		-557.39	170.64
18+50.00	50.00	0.45	4.77	4.21	2.14		0.42	4.87	4.19	2.14	0.00	0.78	9.02	7.76	3.96	0.00	103.91	669.55	406.59	232.16		-565.63	174.44
19+00.00	50.00	0.57	4.16	4.29	2.14		0.51	4.47	4.25	2.14	0.00	0.94	8.27	7.88	3.96	0.00	104.85	677.82	414.47	236.12		-572.96	178.35
19+50.00	50.00	0.59	4.32	4.32	2.14		0.58	4.24	4.31	2.14	0.00	1.07	7.85	7.98	3.96	0.00	105.93	685.67	422.45	240.09		-579.74	182.36
20+00.00	50.00	0.24	5.99	4.36	2.14		0.41	5.16	4.34	2.14	0.00	0.76	9.55	8.04	3.97	0.00	106.69	695.22	430.49	244.05		-588.53	186.43
20+50.00	50.00	0.27	5.85	4.35	2.14		0.25	5.92	4.35	2.14	0.00	0.46	10.97	8.06	3.97	0.00	107.15	706.18	438.55	248.02		-599.03	190.53
21+00.00	50.00	0.36	5.58	4.34	2.14		0.31	5.72	4.35	2.14	0.00	0.58	10.58	8.05	3.96	0.00	107.73	716.77	446.60	251.98		-609.04	194.62
21+50.00	50.00	0.25	5.83	4.43	2.14		0.30	5.71	4.39	2.14	0.00	0.56	10.57	8.12	3.96	0.00	108.29	727.33	454.73	255.95		-619.05	198.78
22+00.00	50.00		8.64	4.80	2.47		0.12	7.24	4.61	2.31	0.00	0.23	13.40	8.54	4.27	0.00	108.52	740.74	463.27	260.22		-632.22	203.05
22+50.00	50.00	0.16	6.76	4.39	2.14		0.08	7.70	4.60	2.31	0.00	0.15	14.26	8.51	4.27	0.00	108.67	755.00	471.78	264.49		-646.33	207.29
23+00.00	50.00		3.17	4.94	0.90		0.08	4.96	4.67	1.52	0.00	0.15	9.19	8.64	2.82	0.00	108.82	764.19	480.42	267.30		-655.37	213.12

FILE NAME = 4052-900\_DTI.dwg



USER NAME = ZACH WALLSTEN  
 PLOT SCALE = 1" = .0833'  
 PLOT DATE = 4/28/2017

DESIGNED - MAC  
 DRAWN - ZCW  
 CHECKED - MAC  
 DATE -

REVISED -  
 REVISED -  
 REVISED -  
 REVISED -

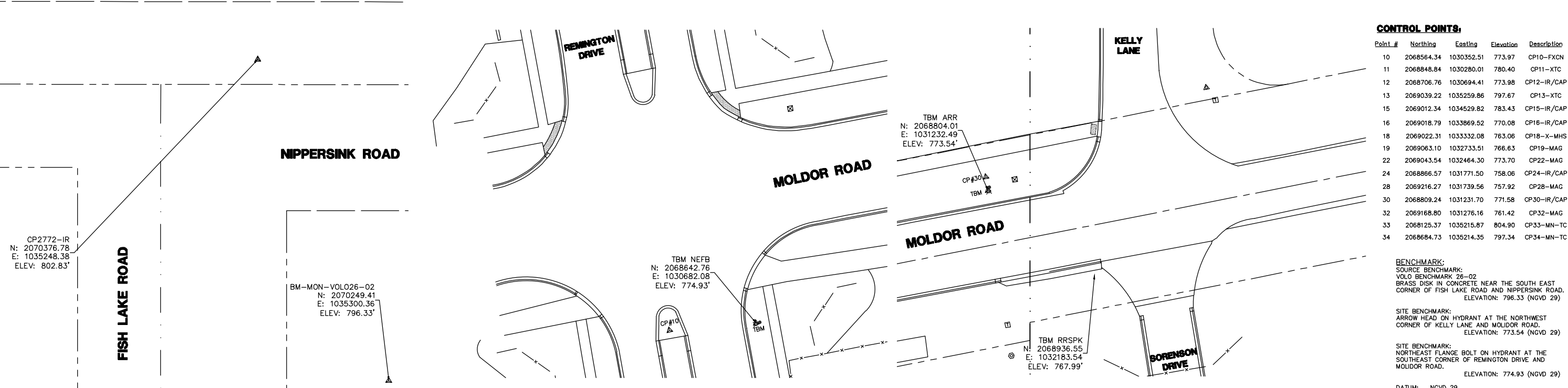
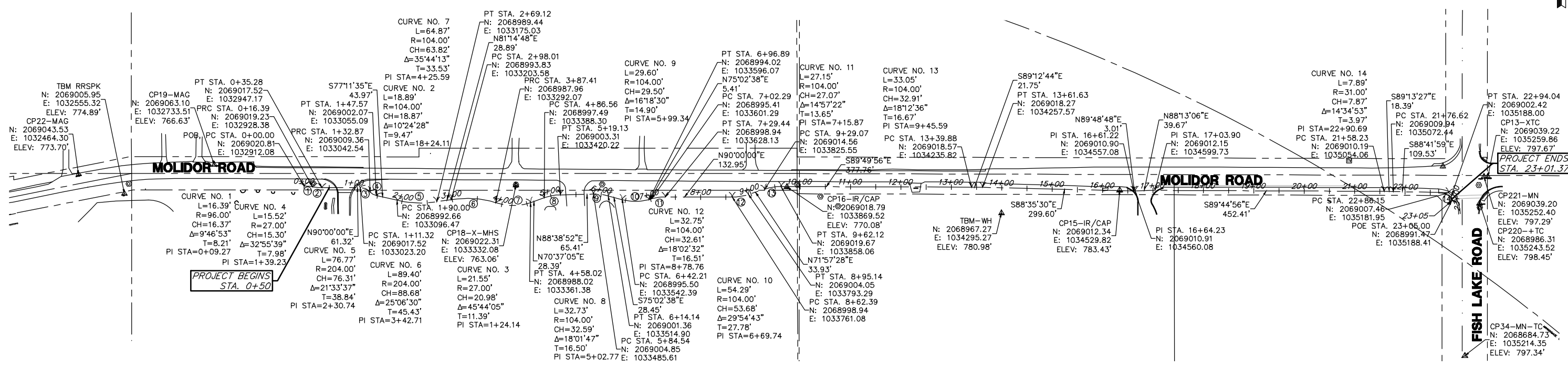
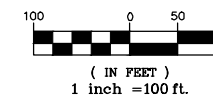
**STATE OF ILLINOIS  
 DEPARTMENT OF TRANSPORTATION**

**EARTH EXCAVATION TABLE  
 MOLITOR ROAD BIKE PATH**

SCALE: NONE    SHEET NO. 1 OF 1 SHEETS    STA. TO STA.

FAU RTE	SECTION	COUNTY	TOTAL SHEETS	SHEET NO.
164	10-00001-00-BT	LAKE	25	5
CONTRACT #:			61E66	
ILLINOIS FED. AID PROJECT				

GRAPHIC SCALE



**CONTROL POINTS:**

Point #	Northing	Easting	Elevation	Description
10	2068564.34	1030352.51	773.97	CP10-FXCN
11	2068848.84	1030280.01	780.40	CP11-XTC
12	2068706.76	1030694.41	773.98	CP12-IR/CAP
13	2069039.22	1035259.86	797.67	CP13-XTC
15	2069012.34	1034529.82	783.43	CP15-IR/CAP
16	2069018.79	1033869.52	770.08	CP16-IR/CAP
18	2069022.31	1033332.08	763.06	CP18-X-MHS
19	2069063.10	1032733.51	766.63	CP19-MAG
22	2069043.54	1032464.30	773.70	CP22-MAG
24	2068866.57	1031771.50	758.06	CP24-IR/CAP
28	2069216.27	1031739.56	757.92	CP28-MAG
30	2068809.24	1031231.70	771.58	CP30-IR/CAP
32	2069168.80	1031276.16	761.42	CP32-MAG
33	2068125.37	1035215.87	804.90	CP33-MN-TC
34	2068684.73	1035214.35	797.34	CP34-MN-TC

**BENCHMARK:**  
SOURCE BENCHMARK:  
VOLD BENCHMARK 26-02  
BRASS DISK IN CONCRETE NEAR THE SOUTH EAST  
CORNER OF FISH LAKE ROAD AND NIPPERSINK ROAD.  
ELEVATION: 796.33 (NGVD 29)

**SITE BENCHMARK:**  
ARROW HEAD ON HYDRANT AT THE NORTHWEST  
CORNER OF KELLY LANE AND MOLDOR ROAD.  
ELEVATION: 773.54 (NGVD 29)

**SITE BENCHMARK:**  
NORTHEAST FLANGE BOLT ON HYDRANT AT THE  
SOUTHEAST CORNER OF REMINGTON DRIVE AND  
MOLDOR ROAD.  
ELEVATION: 774.93 (NGVD 29)

DATUM: NGVD 29

FILE NAME = 4052.000\_Alignment.dwg



USER NAME = ZACH WALLSTEN  
DESIGNED - MAC  
DRAWN - ZCW  
CHECKED - MAC  
DATE -  
PLOT SCALE = 1" = .08'  
PLOT DATE = 9/11/2017

REVISIONS  
REVISOR  
DATE  
REVISIONS  
REVISOR  
DATE

DESIGNED - MAC  
DRAWN - ZCW  
CHECKED - MAC  
DATE -

STATE OF ILLINOIS  
DEPARTMENT OF TRANSPORTATION

ALIGNMENT, TIES, AND BENCHMARK  
MOLDOR ROAD BIKE PATH  
SCALE: NONE  
SHEET NO. 1 OF 1 SHEETS  
STA. TO STA.

FAU. RTE.	SECTION	COUNTY	TOTAL SHEETS	SHEET NO.
164	10-00001-00-BT	LAKE	25	6
CONTRACT #:			61E66	
ILLINOIS FED. AID PROJECT				

FILE NAME = 4052.900\_DEMO.dwg



USER NAME = ZACH WALLSTEN  
 PLOT SCALE = 1" = .08'  
 PLOT DATE = 4/28/2017

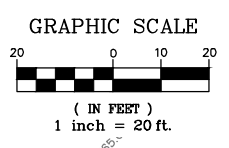
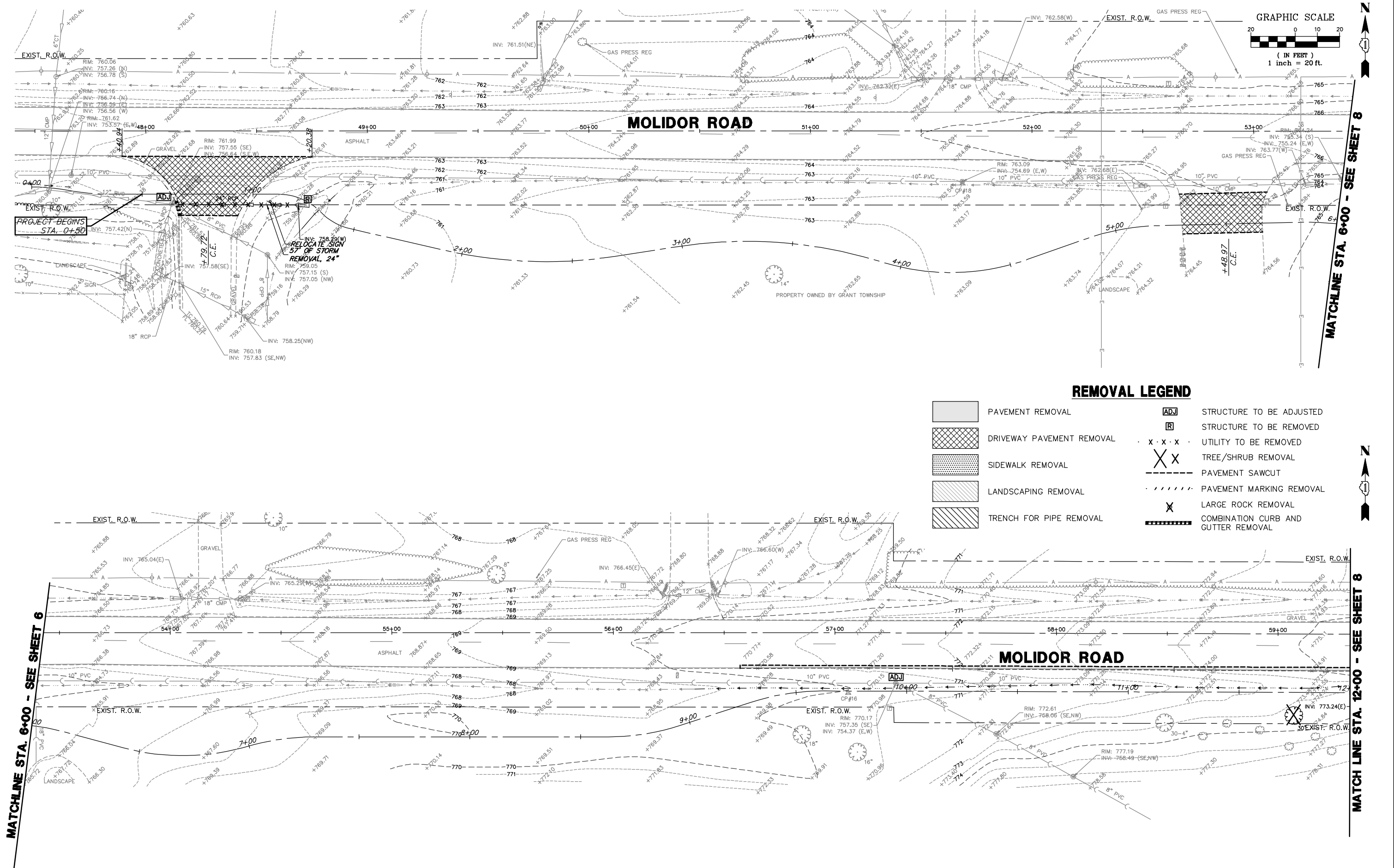
DESIGNED - MAC  
 DRAWN - ZCW  
 CHECKED - MAC  
 DATE -

REVISED -  
 REVISED -  
 REVISED -  
 REVISED -

**STATE OF ILLINOIS  
 DEPARTMENT OF TRANSPORTATION**

**DEMOLITION PLAN  
 MOLIDOR ROAD BIKE PATH**  
 SCALE 1"=20'  
 SHEET NO. 1 OF 2 SHEETS  
 STA. 0+00 TO STA. 12+00

FAU. RTE.	SECTION	COUNTY	TOTAL SHEETS	SHEET NO.
164	10-00001-00-BT	LAKE	25	7
CONTRACT #			61E66	
ILLINOIS FED. AID PROJECT				



**REMOVAL LEGEND**

- PAVEMENT REMOVAL
- DRIVEWAY PAVEMENT REMOVAL
- SIDEWALK REMOVAL
- LANDSCAPING REMOVAL
- TRENCH FOR PIPE REMOVAL
- STRUCTURE TO BE ADJUSTED
- STRUCTURE TO BE REMOVED
- UTILITY TO BE REMOVED
- TREE/SHRUB REMOVAL
- PAVEMENT SAWCUT
- PAVEMENT MARKING REMOVAL
- LARGE ROCK REMOVAL
- COMBINATION CURB AND GUTTER REMOVAL

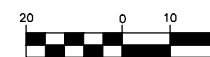
MATCHLINE STA. 6+00 - SEE SHEET 6

MATCHLINE STA. 12+00 - SEE SHEET 8

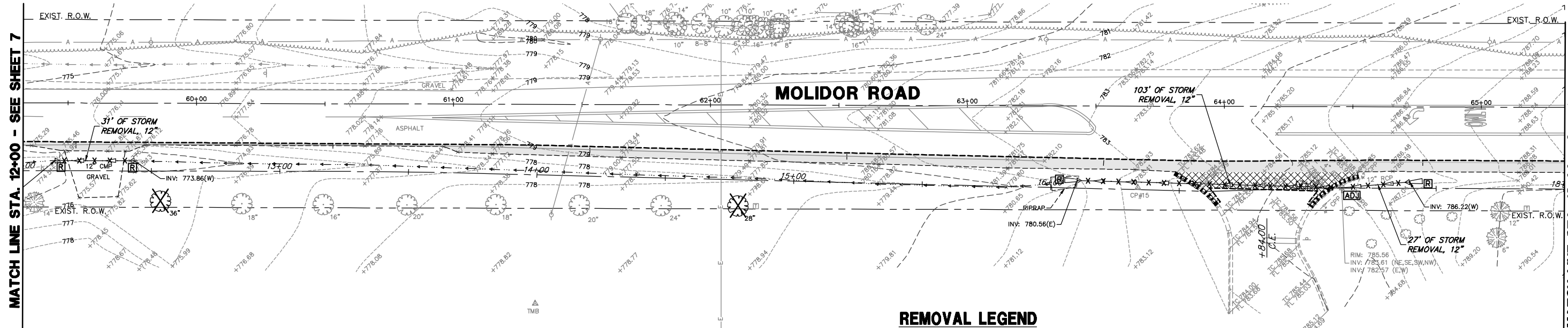
MATCHLINE STA. 6+00 - SEE SHEET 8



GRAPHIC SCALE



( IN FEET )  
1 inch = 20 ft.

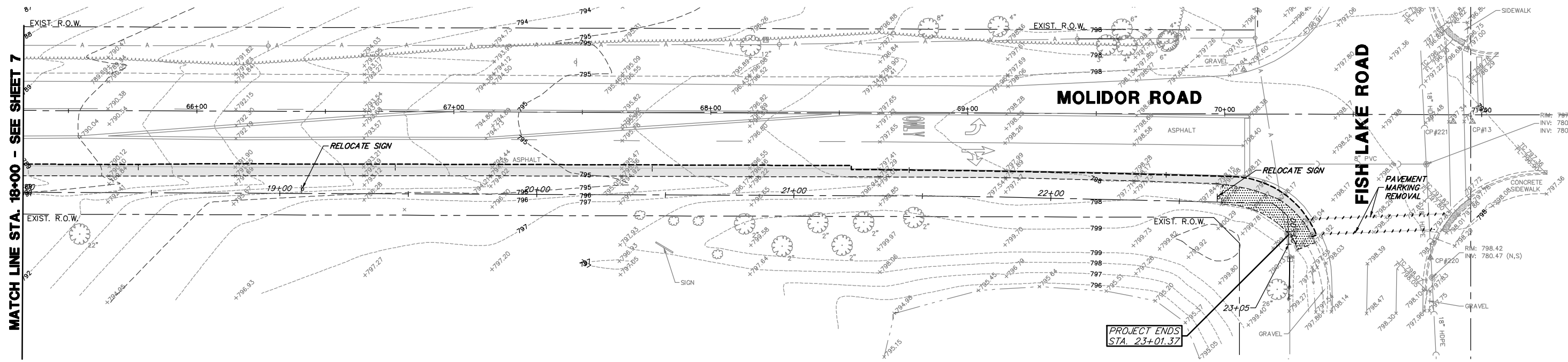


MATCH LINE STA. 12+00 - SEE SHEET 7

MATCH LINE STA. 18+00 - SEE SHEET 9

**REMOVAL LEGEND**

- |  |                           |  |                                     |
|--|---------------------------|--|-------------------------------------|
|  | PAVEMENT REMOVAL          |  | STRUCTURE TO BE ADJUSTED            |
|  | DRIVEWAY PAVEMENT REMOVAL |  | STRUCTURE TO BE REMOVED             |
|  | SIDEWALK REMOVAL          |  | UTILITY TO BE REMOVED               |
|  | LANDSCAPING REMOVAL       |  | TREE/SHRUB REMOVAL                  |
|  | TRENCH FOR PIPE REMOVAL   |  | PAVEMENT SAWCUT                     |
|  |                           |  | PAVEMENT MARKING REMOVAL            |
|  |                           |  | LARGE ROCK REMOVAL                  |
|  |                           |  | COMBINATION CURB AND GUTTER REMOVAL |



MATCH LINE STA. 18+00 - SEE SHEET 7



FILE NAME = 4052.900\_DEMO.dwg

**GHA GENALT HAMILTON ASSOCIATES, INC.**

USER NAME = ZACH WALLSTEN  
PLOT SCALE = 1" = .08'  
PLOT DATE = 4/28/2017

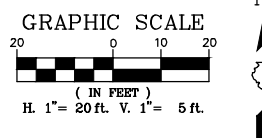
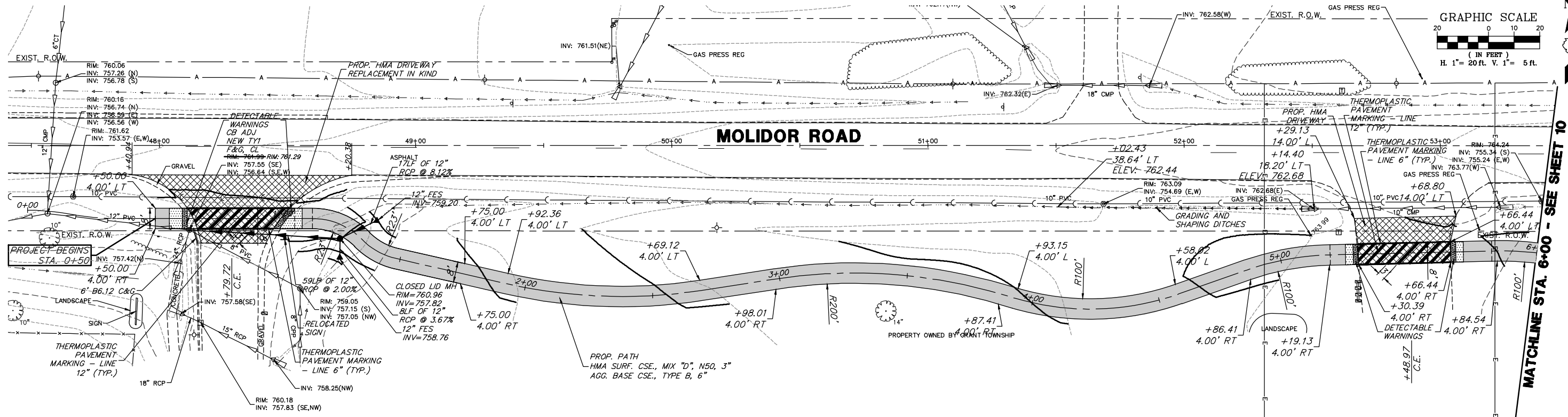
DESIGNED - MAC  
DRAWN - ZCW  
CHECKED - MAC  
DATE -

REVISED -  
REVISED -  
REVISED -  
REVISED -

**STATE OF ILLINOIS  
DEPARTMENT OF TRANSPORTATION**

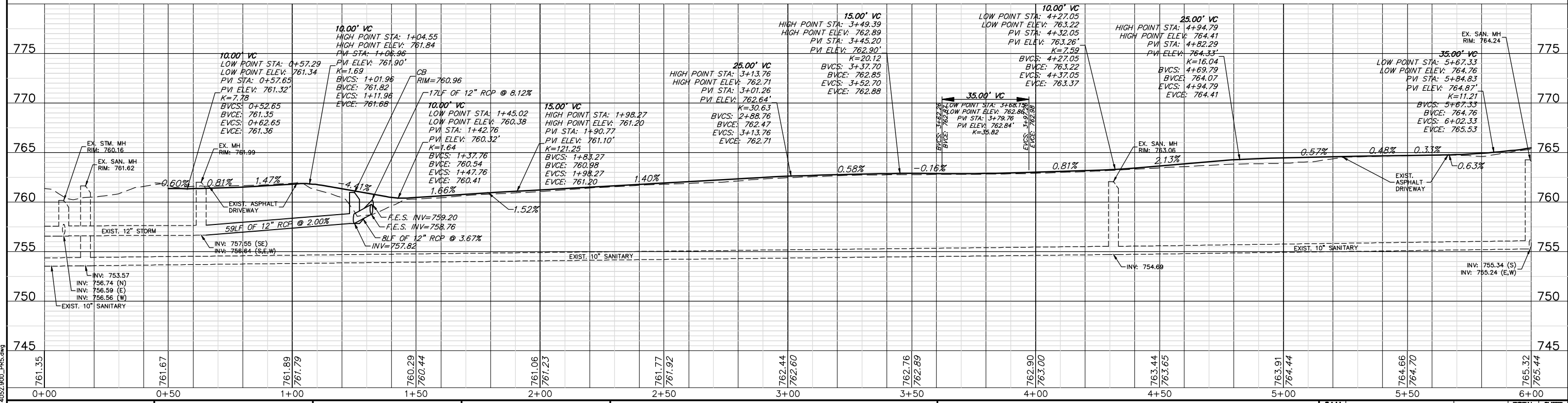
**DEMOLITION PLAN  
MOLIDOR ROAD BIKE PATH**  
SCALE 1"=20'  
SHEET NO. 2 OF 2 SHEETS  
STA. 12+00 TO STA. 23+01.37

FAU. RTE.	SECTION	COUNTY	TOTAL SHEETS	SHEET NO.
164	10-00001-00-BT	LAKE	25	8
CONTRACT #			61E66	
ILLINOIS FED. AID PROJECT				



**PROPOSED LEGEND**

- HMA SURFACE COURSE MIX D, N50, 3"  
AGGREGATE BASE COURSE, TYPE B, 6"
- P.C.C. SIDEWALK 5"
- HMA SURFACE COURSE MIX D, N50, 2"  
HOT-MIX ASPHALT BINDER COURSE, IL-19.0, N50, 4"
- PCC BASE COURSE 7"  
HMA SURFACE COURSE, MIX "D", N50, 2"



USER NAME = ZACH WALLSTEN  
 DESIGNED - MAC  
 DRAWN - ZCW  
 CHECKED - MAC  
 DATE - -

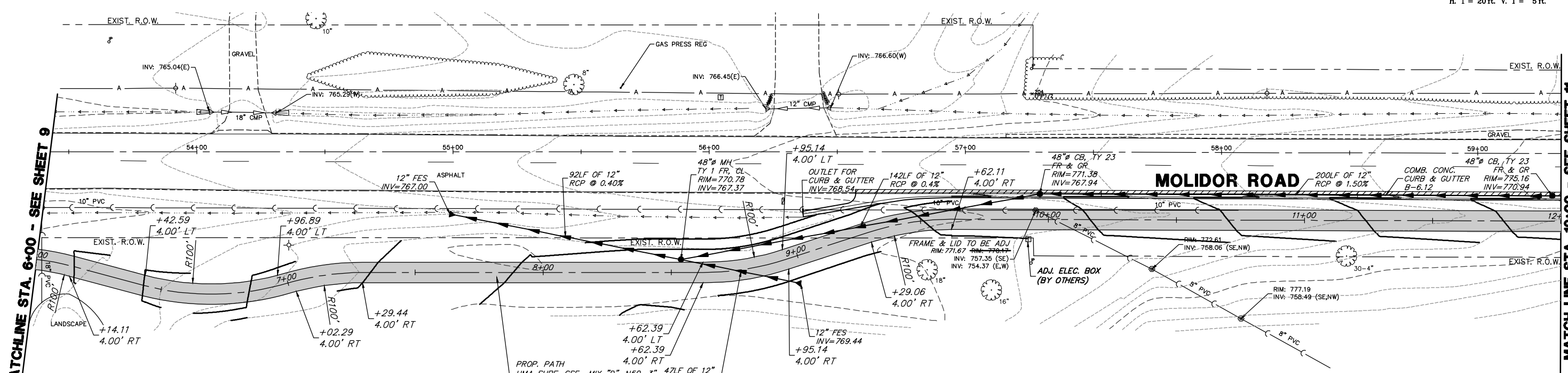
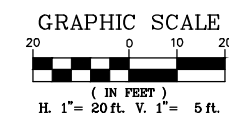
REVISIONS  
 REVISION -  
 REVISION -  
 REVISION -  
 REVISION -

**STATE OF ILLINOIS  
 DEPARTMENT OF TRANSPORTATION**

**PLAN AND PROFILE  
 MOLIDOR ROAD BIKE PATH**  
 SCALE 1"=20'  
 SHEET NO. 1 OF 4 SHEETS  
 STA. 0+00 TO STA. 6+00

FALL RITE	SECTION	COUNTY	TOTAL SHEETS	SHEET NO.
164	10-00001-00-BT	LAKE	25	9
CONTRACT #			61E66	
ILLINOIS FED. AID PROJECT				

FILE NAME = 4052-900\_PRES.dwg

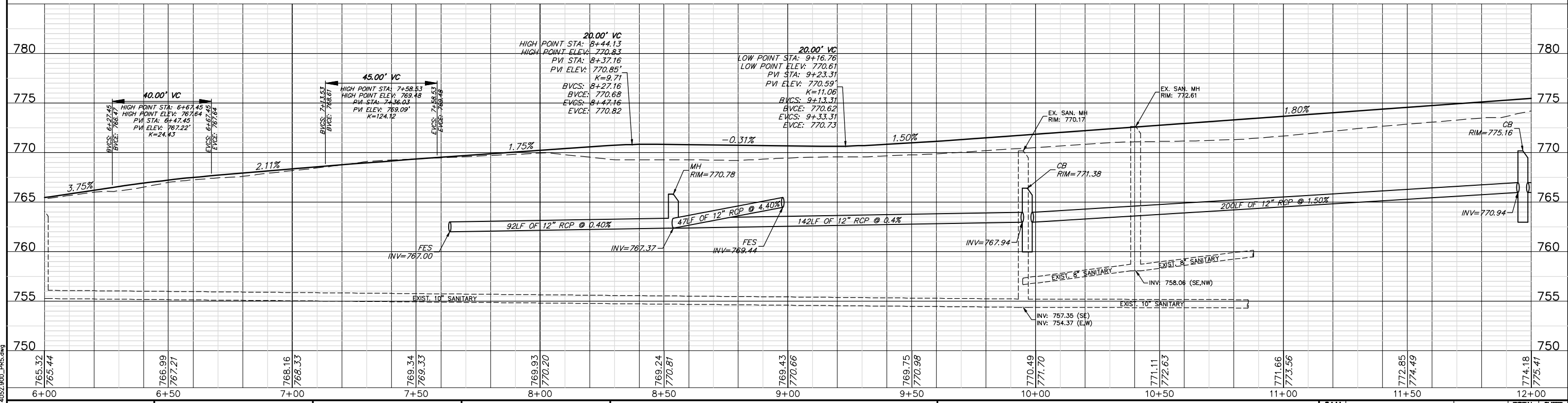


MATCHLINE STA. 6+00 - SEE SHEET 9

MATCHLINE STA. 12+00 - SEE SHEET 11

**PROPOSED LEGEND**

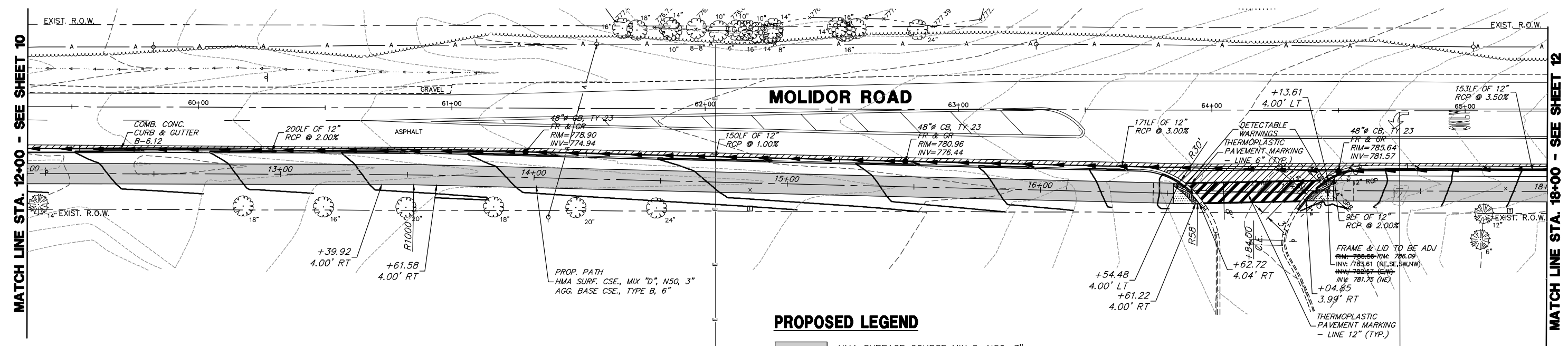
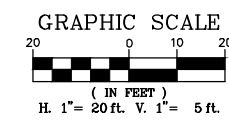
- HMA SURFACE COURSE MIX D, N50, 3" AGGREGATE BASE COURSE, TYPE B, 6"
- P.C.C. SIDEWALK 5"
- HMA SURFACE COURSE MIX D, N50, 2" HOT-MIX ASPHALT BINDER COURSE, IL-19.0, N50, 4"
- PCC BASE COURSE 7" HMA SURFACE COURSE, MIX "D", N50, 2"



FILE NAME = 4052\_900\_PRES.dwg

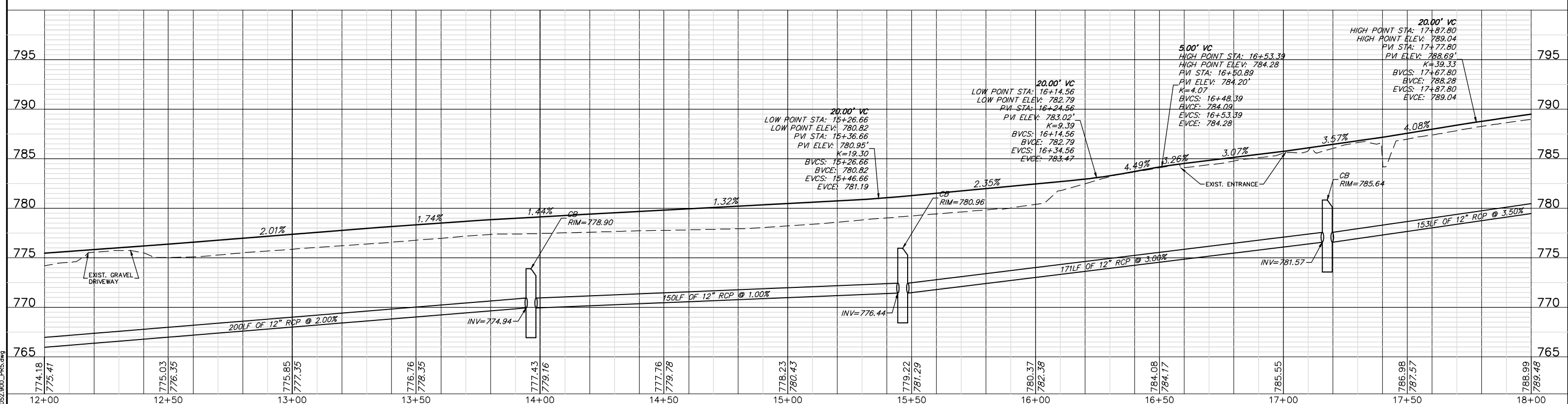
<p><b>GHA GENALT HAMILTON ASSOCIATES, INC.</b></p> <p>USER NAME = ZACH WALLSTEN</p> <p>PLOT SCALE = 1" = .0833'</p> <p>PLOT DATE = 2/27/2007 1:02 PM</p>	<p>DESIGNED - MAC</p> <p>DRAWN - ZCW</p> <p>CHECKED - MAC</p> <p>DATE -</p>	<p>REVISED -</p> <p>REVISED -</p> <p>REVISED -</p> <p>REVISED -</p>	<p><b>STATE OF ILLINOIS DEPARTMENT OF TRANSPORTATION</b></p>	<p><b>PLAN AND PROFILE MOLIDOR ROAD BIKE PATH</b></p> <p>SCALE 1"=20' SHEET NO. 2 OF 4 SHEETS STA. 6+00 TO STA. 12+00</p>	<table border="1" style="width: 100%; border-collapse: collapse;"> <tr> <th>FALL RTE.</th> <th>SECTION</th> <th>COUNTY</th> <th>TOTAL SHEETS</th> <th>SHEET NO.</th> </tr> <tr> <td>164</td> <td>10-00001-00-BT</td> <td>LAKE</td> <td>25</td> <td>10</td> </tr> </table> <p>CONTRACT # 61E66</p> <p>ILLINOIS FED. AID PROJECT</p>	FALL RTE.	SECTION	COUNTY	TOTAL SHEETS	SHEET NO.	164	10-00001-00-BT	LAKE	25	10
FALL RTE.	SECTION	COUNTY	TOTAL SHEETS	SHEET NO.											
164	10-00001-00-BT	LAKE	25	10											





**PROPOSED LEGEND**

- HMA SURFACE COURSE MIX D, N50, 3"  
AGGREGATE BASE COURSE, TYPE B, 6"
- P.C.C. SIDEWALK 5"
- HMA SURFACE COURSE MIX D, N50, 2"  
HOT-MIX ASPHALT BINDER COURSE, IL-19.0, N50, 4"
- PCC BASE COURSE 7"  
HMA SURFACE COURSE, MIX "D", N50, 2"



FILE NAME = 4052\_900\_PRES.dwg

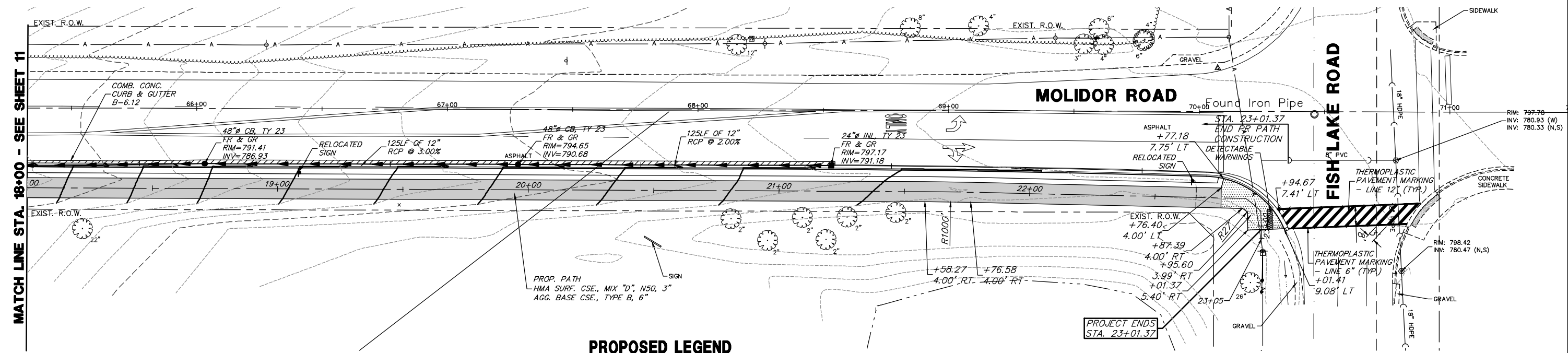
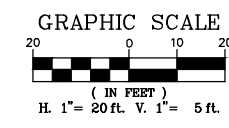


USER NAME = ZACH WALLSTEN	DESIGNED - MAC	REVISED -
PLOT SCALE = 1" = .0833'	DRAWN - ZCW	REVISED -
PLOT DATE = 2/27/2007 1:03 PM	CHECKED - MAC	REVISED -
	DATE -	REVISED -

**STATE OF ILLINOIS  
DEPARTMENT OF TRANSPORTATION**

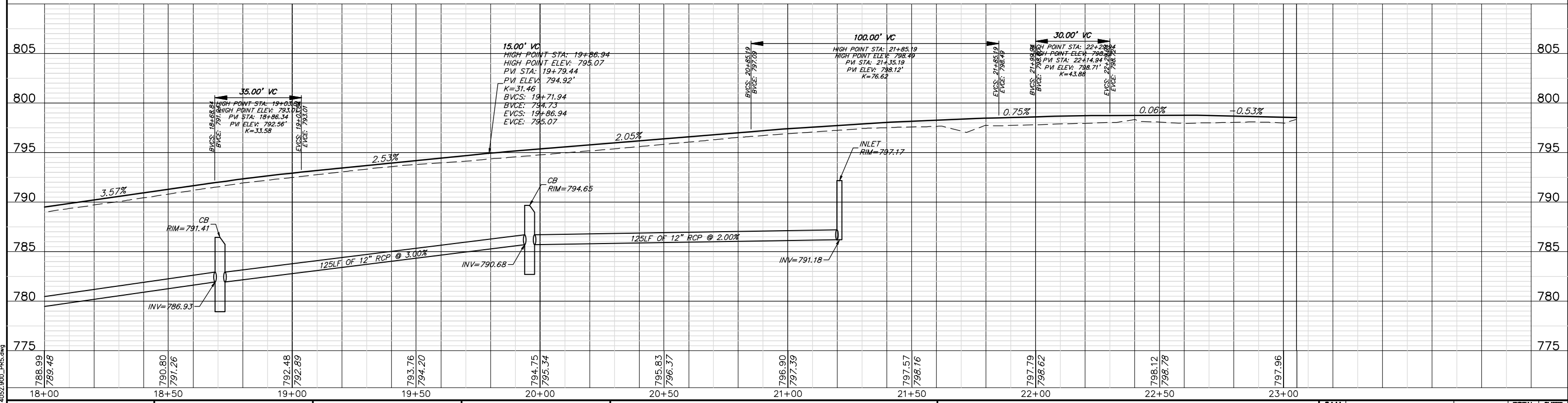
<b>PLAN AND PROFILE MOLIDOR ROAD BIKE PATH</b>	
SCALE 1"=20'	SHEET NO. 3 OF 4 SHEETS
STA. 12+00	TO STA. 18+00

FALL RATE	SECTION	COUNTY	TOTAL SHEETS	SHEET NO.
164	10-00001-00-BT	LAKE	25	11
CONTRACT #			61E66	
ILLINOIS FED. AID PROJECT				



**PROPOSED LEGEND**

- HMA SURFACE COURSE MIX D, N50, 3"  
AGGREGATE BASE COURSE, TYPE B, 6"
- P.C.C. SIDEWALK 5"
- HMA SURFACE COURSE MIX D, N50, 2"  
HOT-MIX ASPHALT BINDER COURSE, IL-19.0, N50, 4
- PCC BASE COURSE 7"  
HMA SURFACE COURSE, MIX "D", N50, 2"



FILE NAME = 4052\_900\_PRES.dwg



USER NAME = ZACH WALLSTEN  
 DESIGNED - MAC  
 DRAWN - ZCW  
 CHECKED - MAC  
 DATE -  
 PLOT SCALE = 1" = .0833"  
 PLOT DATE = 2/27/2007 1:03 PM

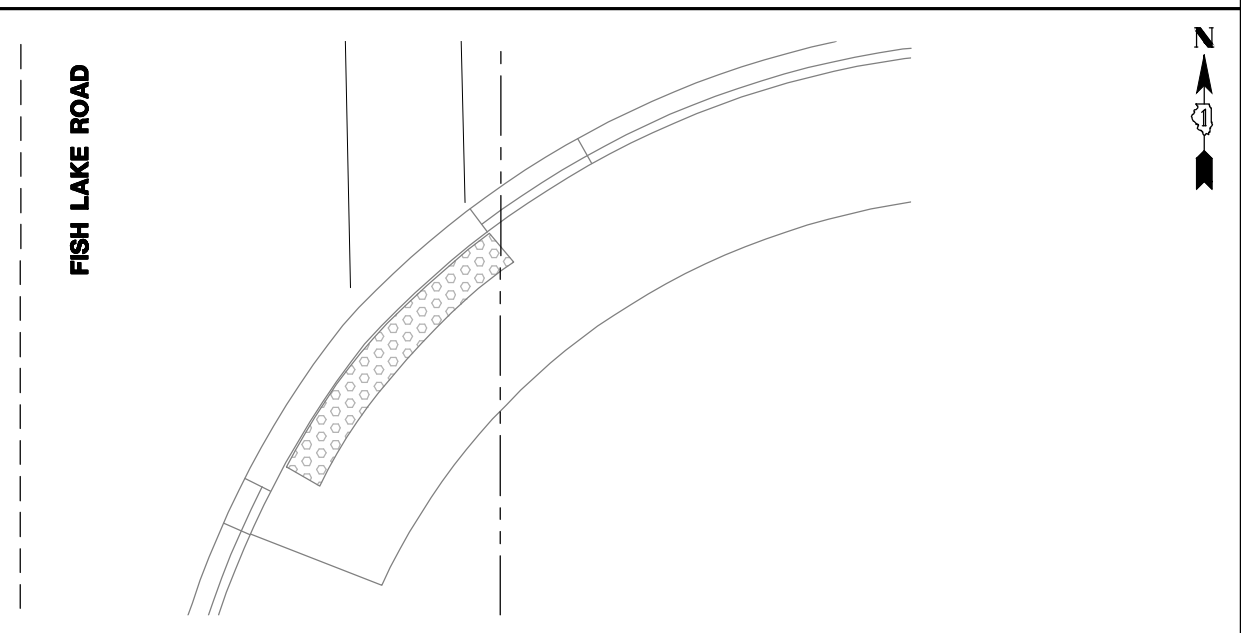
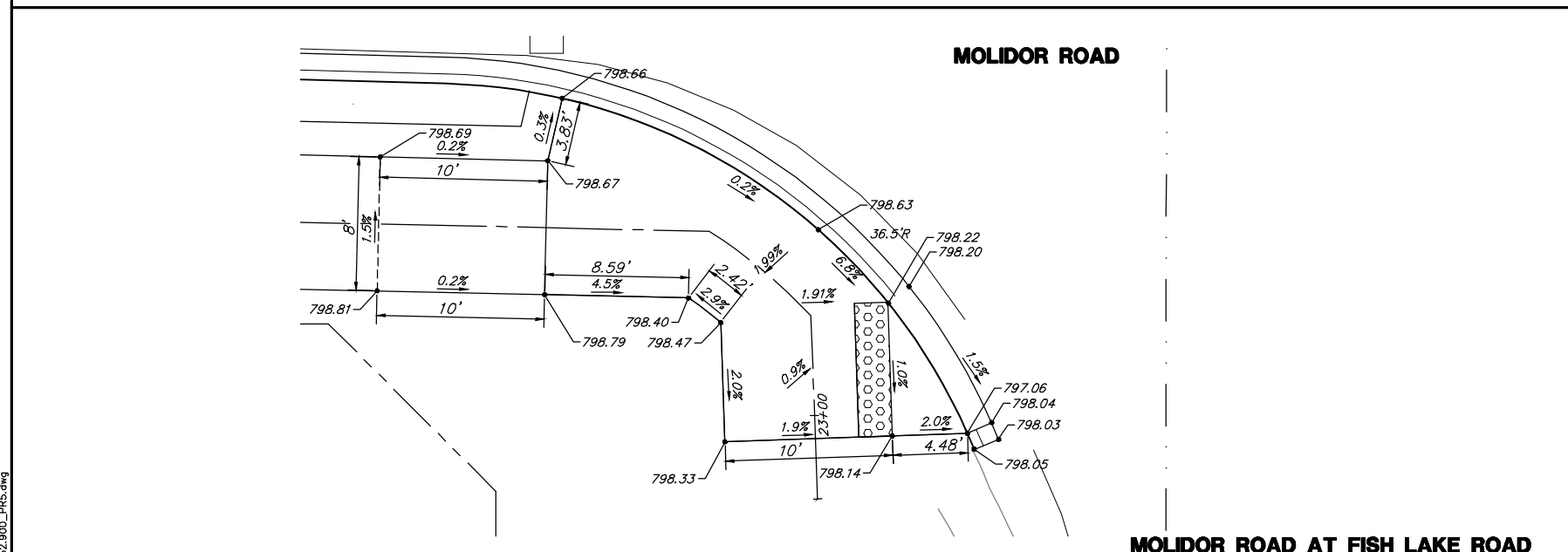
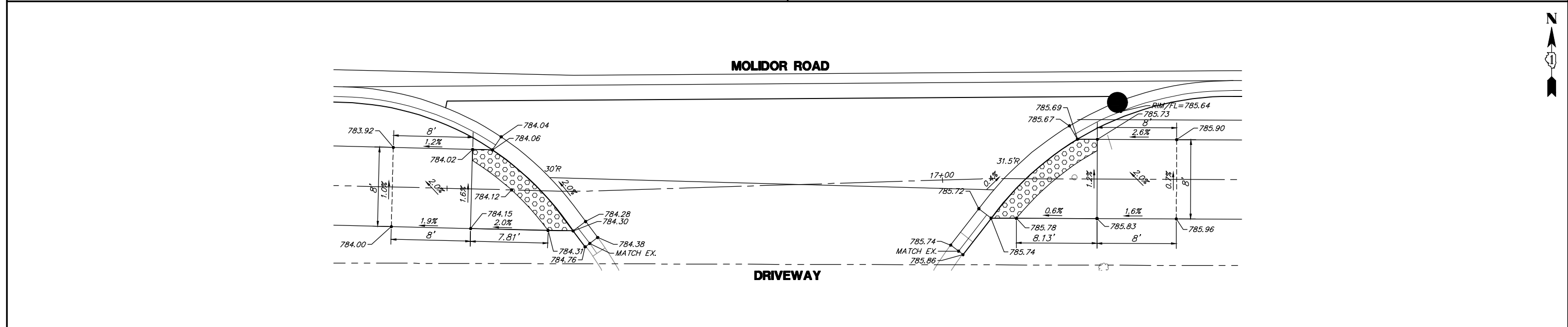
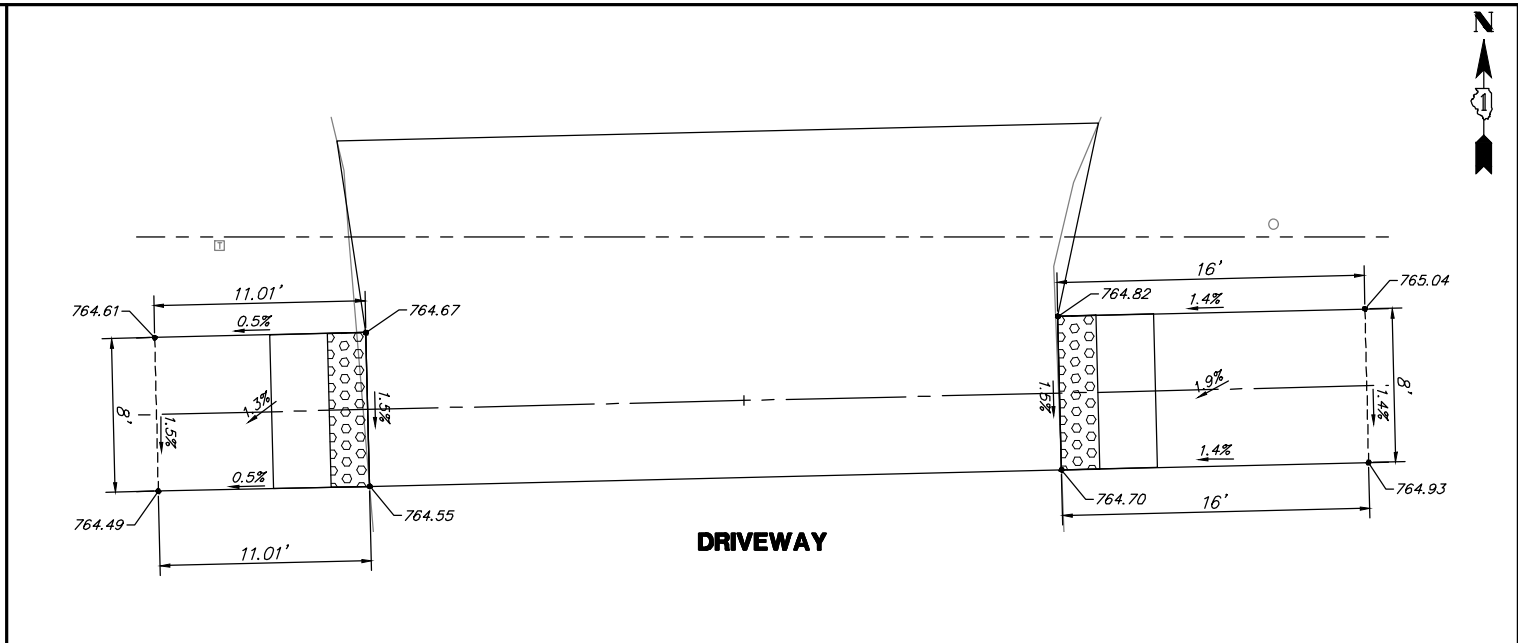
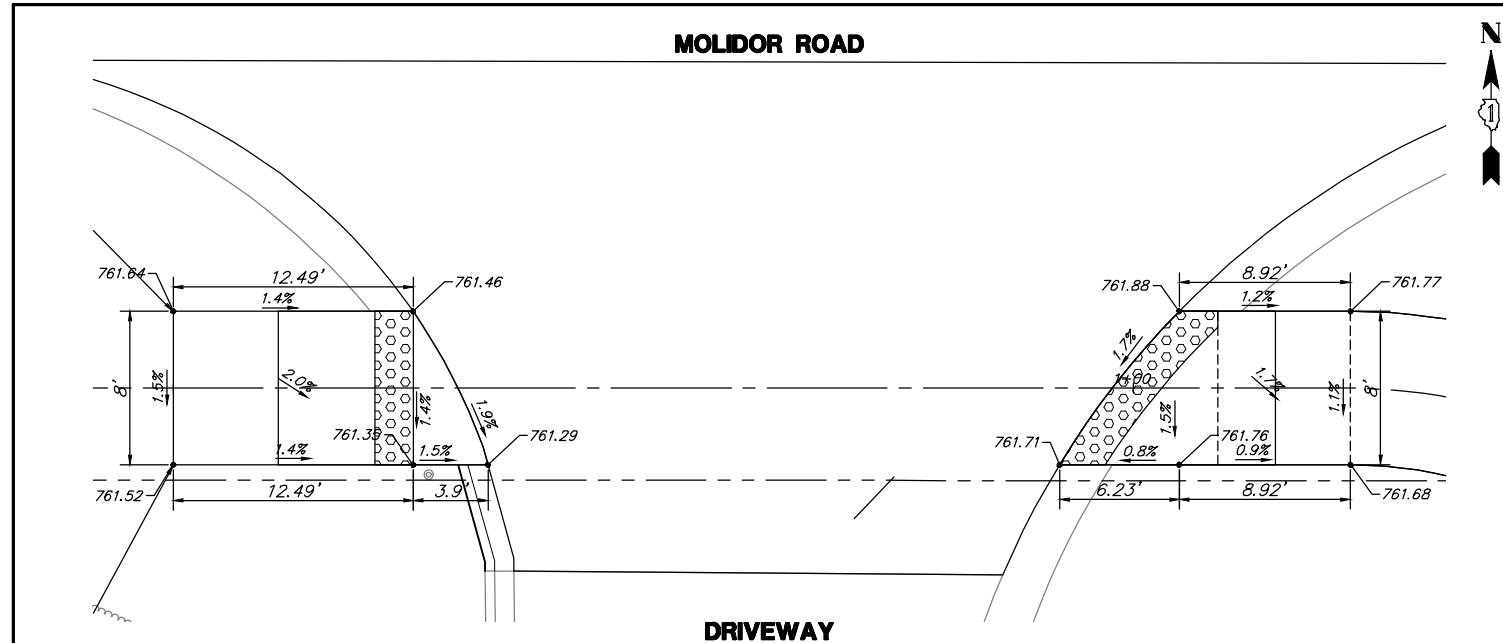
DESIGNED - MAC  
 DRAWN - ZCW  
 CHECKED - MAC  
 DATE -

REVISED -  
 REVISED -  
 REVISED -  
 REVISED -

**STATE OF ILLINOIS  
 DEPARTMENT OF TRANSPORTATION**

**PLAN AND PROFILE  
 MOLIDOR ROAD BIKE PATH**  
 SCALE 1"=20'  
 SHEET NO. 4 OF 4 SHEETS  
 STA. 18+00 TO STA. E.O.P.

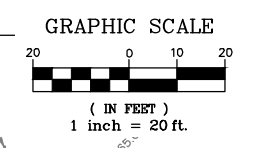
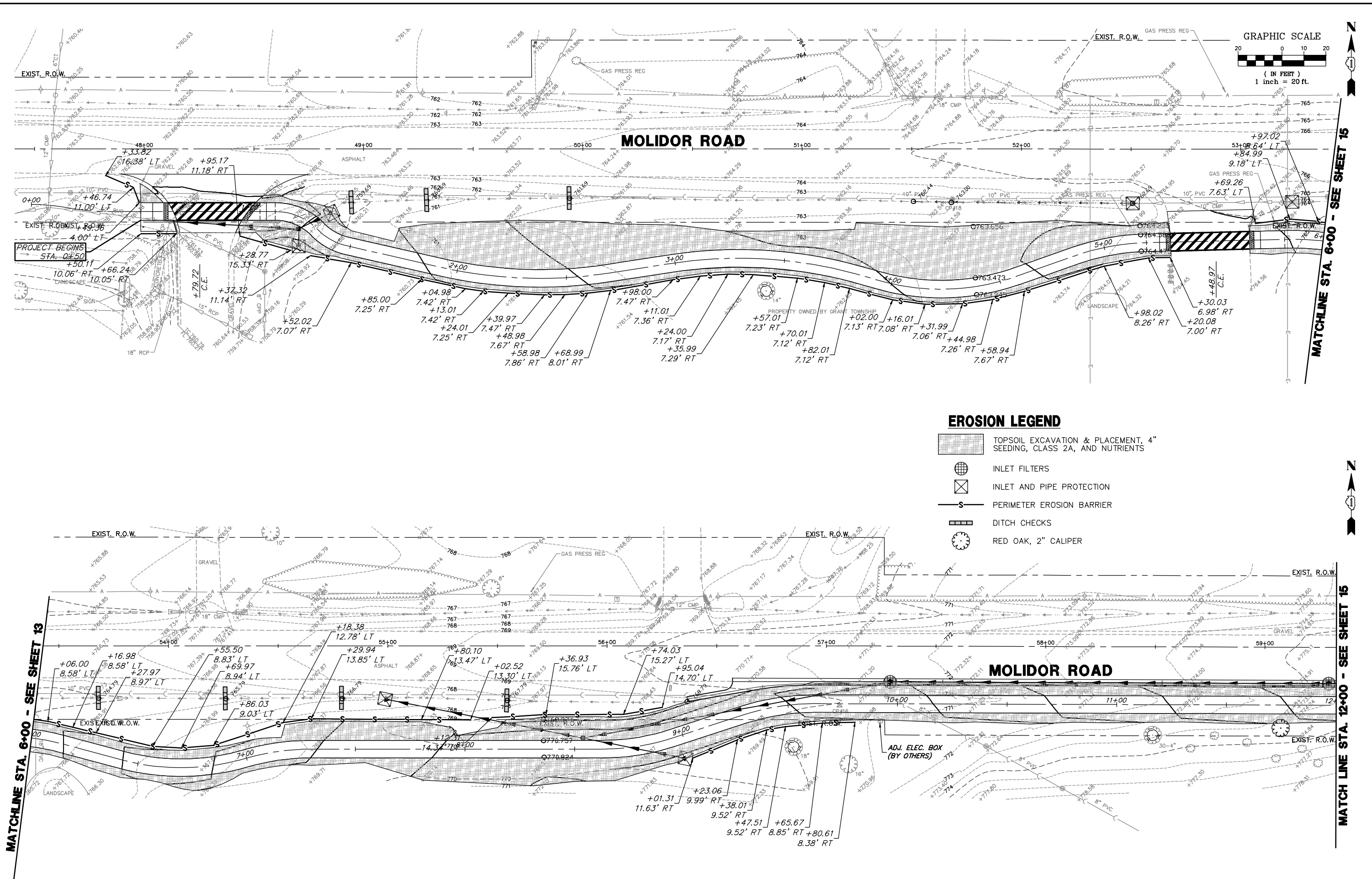
FALL RATE	SECTION	COUNTY	TOTAL SHEETS	SHEET NO.
164	10-00001-00-BT	LAKE	25	12
CONTRACT #			61E66	
ILLINOIS FED. AID PROJECT				



	USER NAME = ZACH WALLSTEN	DESIGNED - MAC	REVISED -	<b>STATE OF ILLINOIS</b> <b>DEPARTMENT OF TRANSPORTATION</b>	<b>DRIVEWAY GRADING</b> <b>MOLIDOR ROAD BIKE PATH</b>		<table border="1"> <tr> <th>FAU. RTE.</th> <th>SECTION</th> <th>COUNTY</th> <th>TOTAL SHEETS</th> <th>SHEET NO.</th> </tr> <tr> <td>164</td> <td>10-00001-00-BT</td> <td>LAKE</td> <td>25</td> <td>13</td> </tr> </table>	FAU. RTE.	SECTION	COUNTY	TOTAL SHEETS	SHEET NO.	164	10-00001-00-BT	LAKE	25	13	
	FAU. RTE.	SECTION	COUNTY		TOTAL SHEETS	SHEET NO.												
	164	10-00001-00-BT	LAKE		25	13												
PLOT SCALE = 1" = .0833'	DRAWN - ZCW	REVISED -	<table border="1"> <tr> <th>SCALE</th> <th>SHEET NO.</th> <th>OF 1 SHEETS</th> <th>STA.</th> <th>TO STA.</th> </tr> <tr> <td>1"=5'</td> <td>1</td> <td>1</td> <td></td> <td></td> </tr> </table>	SCALE	SHEET NO.	OF 1 SHEETS	STA.	TO STA.	1"=5'	1	1			<table border="1"> <tr> <th>CONTRACT #</th> <td>61E66</td> </tr> <tr> <td colspan="2">ILLINOIS FED. AID PROJECT</td> </tr> </table>	CONTRACT #	61E66	ILLINOIS FED. AID PROJECT	
SCALE	SHEET NO.	OF 1 SHEETS	STA.	TO STA.														
1"=5'	1	1																
CONTRACT #	61E66																	
ILLINOIS FED. AID PROJECT																		
PLOT DATE = 4/28/2018 1:05 PM	CHECKED - MAC	REVISED -																
	DATE -	REVISED -																

FILE NAME = 4052.900\_PRES.dwg





**EROSION LEGEND**

- TOPSOIL EXCAVATION & PLACEMENT, 4" SEEDING, CLASS 2A, AND NUTRIENTS
- INLET FILTERS
- INLET AND PIPE PROTECTION
- PERIMETER EROSION BARRIER
- DITCH CHECKS
- RED OAK, 2" CALIPER

FILE NAME = 4052.900\_ESC.dwg

MATCHLINE STA. 6+00 - SEE SHEET 13

MATCHLINE STA. 12+00 - SEE SHEET 15



USER NAME = ZACH WALLSTEN  
 PLOT SCALE = 1" = .08'  
 PLOT DATE = 4/28/2017

DESIGNED - MAC  
 DRAWN - ZCW  
 CHECKED - MAC  
 DATE -

REVISED -  
 REVISED -  
 REVISED -  
 REVISED -

**STATE OF ILLINOIS  
 DEPARTMENT OF TRANSPORTATION**

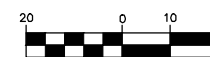
**EROSION AND SEDIMENT CONTROL PLAN  
 MOLIDOR ROAD BIKE PATH**

SCALE 1"=20'    SHEET NO. 1 OF 2 SHEETS    STA. 0+00 TO STA. 12+00

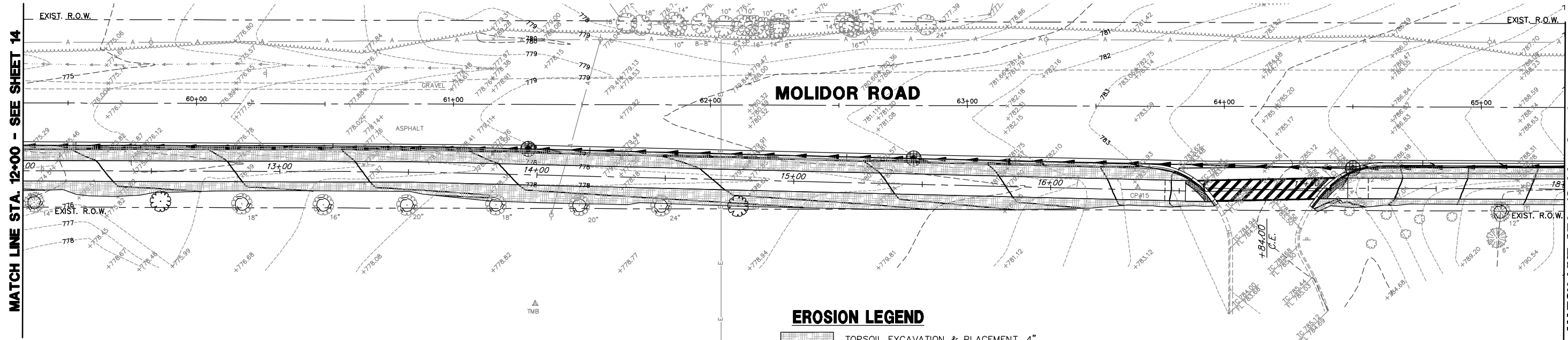
FALL RITE	SECTION	COUNTY	TOTAL SHEETS	SHEET NO.
164	10-00001-00-BT	LAKE	25	14

CONTRACT # 61E66  
 ILLINOIS FED. AID PROJECT

GRAPHIC SCALE



( IN FEET )  
1 inch = 20 ft.

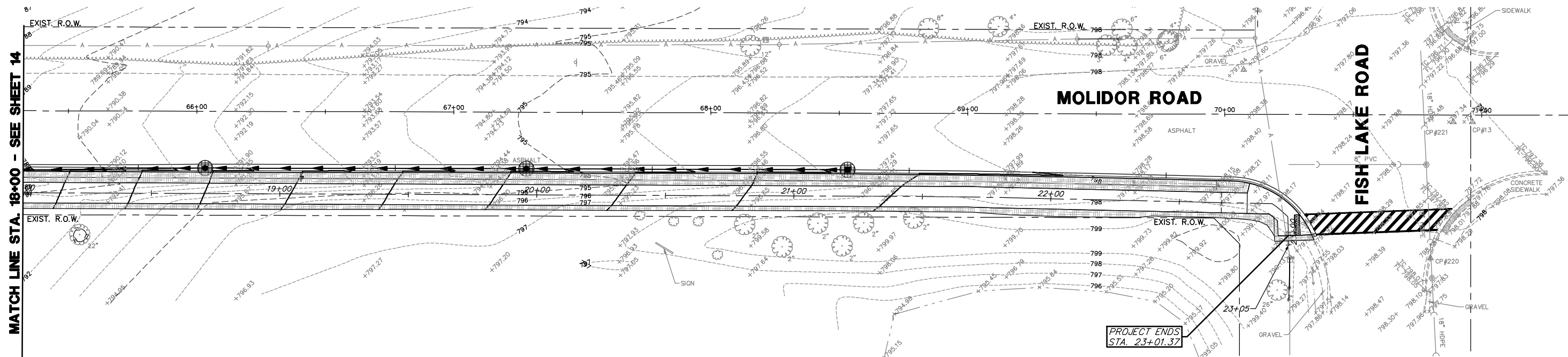


MATCH LINE STA. 12+00 - SEE SHEET 14

MATCH LINE STA. 18+00 - SEE SHEET 16

**EROSION LEGEND**

- TOPSOIL EXCAVATION & PLACEMENT, 4" SEEDING, CLASS 2A, AND NUTRIENTS
- INLET FILTERS
- INLET AND PIPE PROTECTION
- PERIMETER EROSION BARRIER
- DITCH CHECKS
- RED OAK, 2" CALIPER



MATCH LINE STA. 18+00 - SEE SHEET 14



PROJECT ENDS  
STA. 23+01.37

FILE NAME = 4052.900\_ESC.dwg



USER NAME = ZACH WALLSTEN	DESIGNED - MAC	REVISED -
PLOT SCALE = 1" = .08'	DRAWN - ZCW	REVISED -
PLOT DATE = 4/28/2017	CHECKED - MAC	REVISED -
	DATE -	REVISED -

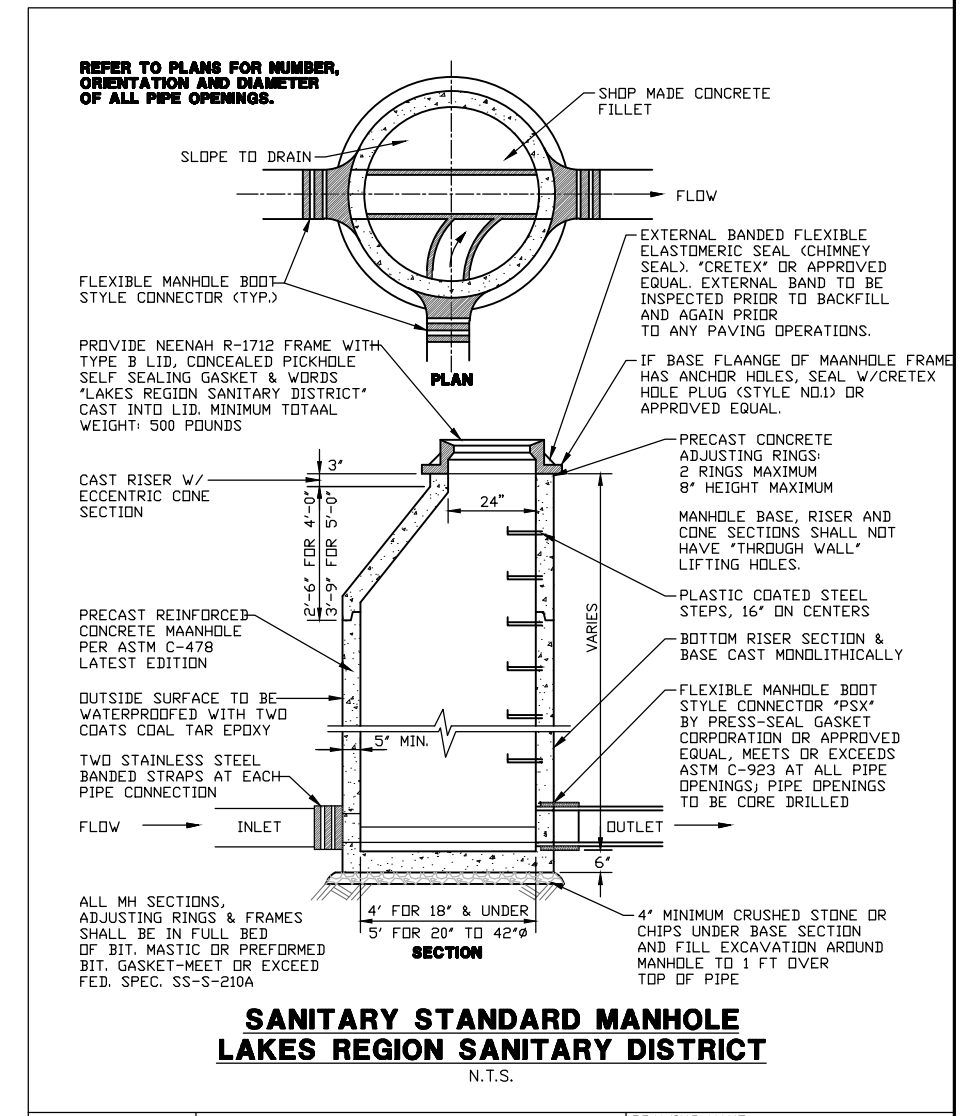
**STATE OF ILLINOIS  
DEPARTMENT OF TRANSPORTATION**

<b>EROSION AND SEDIMENT CONTROL PLAN MOLIDOR ROAD BIKE PATH</b>			
SCALE 1"=20'	SHEET NO. 2 OF 2 SHEETS	STA. 12+00 TO STA. 23+01.37	

FAU. RTE.	SECTION	COUNTY	TOTAL SHEETS	SHEET NO.
164	10-00001-00-BT	LAKE	25	15
CONTRACT #			61E66	
ILLINOIS FED. AID PROJECT				

LAKES REGION SANITARY DISTRICT  
STANDARD NOTES

1. No sanitary sewer shall be connected to any interceptor, trunk or lateral sewer, or to the sanitary sewer system of the Lakes Region Sanitary District, or a tributary thereto, without a written permit issued by the District. All sanitary sewer system improvements shall, at a minimum, meet the requirements of all District ordinances, standards and planning to accommodate future connections, as well as "Standard Specifications for Water and Sewer Main Construction in Illinois", and "Illinois Recommended Standards for Sewage Works", latest editions.
2. All permitted connections to the District sewer system shall be made with the District's representative present at the time the actual connection is made, and all portions of the line shall be backfilled only after they have been inspected and approved by the District representative. Any sewer covered without observation by the District shall be subject to rejection.
3. No water pipe, drain tile connection or any other type of underground utility connection shall be laid in the same trench excavation as the sewer pipe.
4. No sump pump discharge, footing drain discharge, gutter or cave downspout discharge shall be connected to any sanitary sewer, nor shall said discharges be permitted within ten (10) feet of the centerline of the trench excavation in which there is to be, or is installed, any sanitary sewer connected to or to be connected to the District's sewer system or a tributary thereto.
5. At least three days prior to the start of construction, a preconstruction conference involving the contractor, the owner, the District and RHMG must take place. Provide a minimum of 72-hr notification to the District prior to the meeting at (847) 973-8940.
6. All sanitary sewers connected directly or indirectly to a District sewer or its tributaries shall be constructed so as to exclude groundwater infiltration and stormwater. All sanitary sewers shall be used to carry sanitary sewage only.
7. Provide a minimum of 48-hr notification to the District prior to the start of construction and prior to each required test or observation between the hours of 8:00 a.m. and 4:00 p.m., Monday through Friday excluding District holidays.
8. In the District, only SDR 21 PVC 200-psi pipe with ASTM D2241 fittings and ASTM D3139 joints shall be used for sanitary sewers and service laterals. Where sanitary sewer depths exceed 15-ft, the District may require alternate materials. Provide a minimum of 48-in of cover over the top of pipe for sanitary sewer mains; provide 36-in of cover over sanitary service laterals, or 48-in of cover over sanitary service laterals under pavement.
9. As installation progresses, the interior of the sewer shall be cleaned of all dirt, joint compound and superfluous materials. Prior to use, sanitary sewer mains shall be cleaned and televised. DVDs of televising of all lines shall be provided for LRSD review and approval prior to substantial completion.
10. All sanitary sewer mains shall be tested by mandrel (as appropriate for the pipe material), air, televising and lamping. All sanitary sewer manholes shall be vacuum tested. Provide copies of all test reports to the District. All sewer mains and manholes shall pass all required tests prior to connection and acceptance by LRSD.
11. All manholes, sewer mains and services shall be constructed per LRSD Standard Details - see Sheet 10 of these plans.
12. The developer shall include LRSD during the permit review phase. Plans shall indicate proposed utility locations to allow LRSD to assess potential conflicts. LRSD may require revisions to the proposed layout of the sanitary sewer system or other utilities to minimize or avoid conflicts.
13. All LRSD sanitary sewers shall be constructed within permanent dedicated easements.



FILE NAME = 4052-900\_DTI.dwg

	USER NAME = ZACH WALLSTEN	DESIGNED - MAC	REVISED -
	PLOT SCALE = 1" = .0833'	DRAWN - ZCW	REVISED -
	PLOT DATE = 4/28/2017	CHECKED - MAC	REVISED -
		DATE -	REVISED -

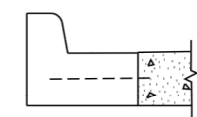
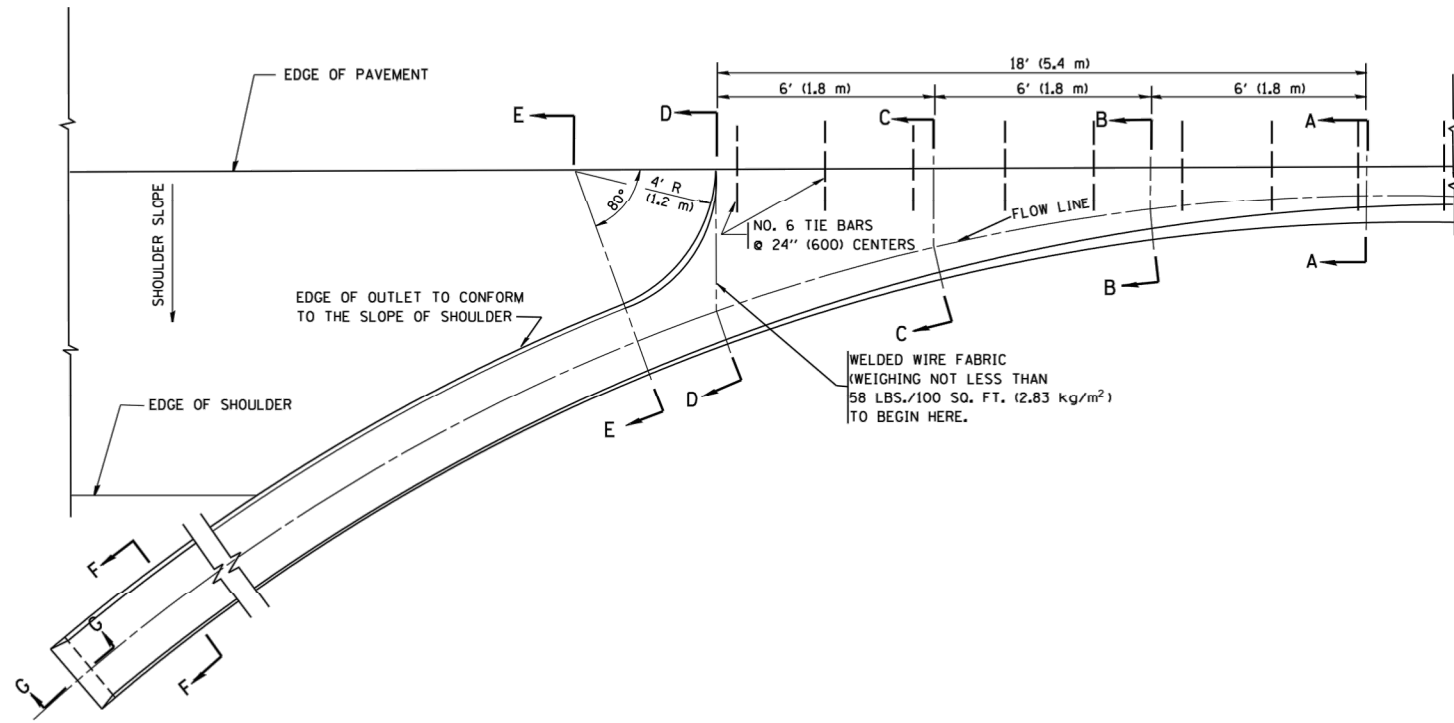
**STATE OF ILLINOIS  
DEPARTMENT OF TRANSPORTATION**

**DETAILS  
MOLIDOR ROAD BIKE PATH**

SCALE: NONE    SHEET NO. 1 OF 1 SHEETS    STA. TO STA.

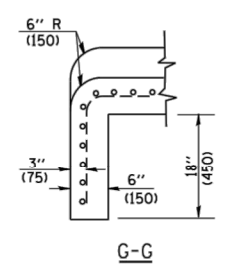
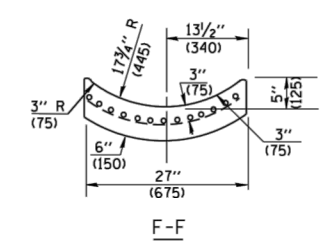
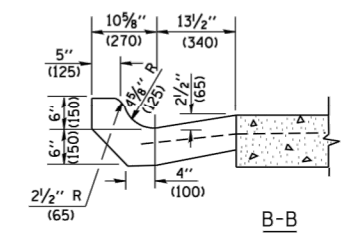
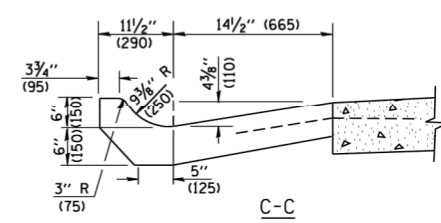
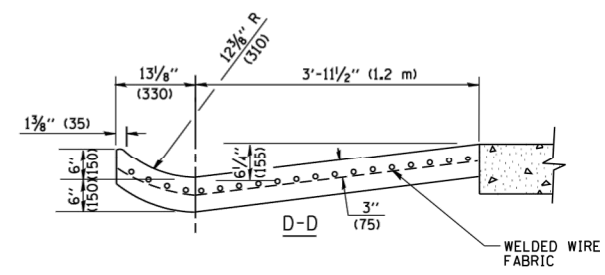
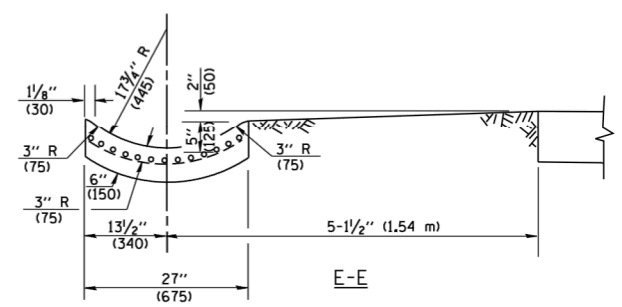
DRAWING NAME: LRSD DETAIL-1	
DATE: 6/06	
LAST REVISED: 6/09	
FALL RTE. 164	SECTION 10-00001-00-BT
COUNTY LAKE	TOTAL SHEETS 25
	SHEET NO. 16
CONTRACT #: 61E66	
ILLINOIS FED. AID PROJECT	





A-A \*

\* DIMENSIONS OF THE CURB & GUTTER AT SECTION A-A ARE SHOWN ON STATE STANDARD 606001. FOR DETAILS OF OUTLET FOR CONCRETE CURB & GUTTER, TYPE B-6.24 (B-15.60) SEE STATE STANDARD 606006.



**GENERAL NOTES**

GUTTER OUTLET SHALL BE TIED TO THE PAVEMENT IN ACCORDANCE WITH DETAILS FOR LONGITUDINAL CONSTRUCTION JOINT SHOWN ON STANDARD 420001.

TIE BARS SHALL BE NO. 20 (NO.6) AT 24\"/>

IF THE AVERAGE GRADE OF PAVEMENT FOR THE DISTANCE FROM SECTION A-A TO D-D EXCEEDS 2%, THIS DISTANCE SHALL BE INCREASED 6\"/>

**QUANTITIES**

FOR SECTION A-A TO E-E AND CURTAIN WALL =  
 1.25 CU. YDS. (0.96 m<sup>3</sup>) CLASS SI CONCRETE (OUTLET) FOR 9\"/>

ALL DIMENSIONS ARE IN INCHES (MILLIMETERS) UNLESS OTHERWISE SHOWN.

GEWALT HAMILTON ASSOCIATES, INC.  
 625 Forest Edge Drive  
 Vernon Hills, IL 60061  
 FAX: (847) 452-0200

FILE NAME =	USER NAME = gegl1a0bt
W:\diststd\22x34\bd83.dgn	

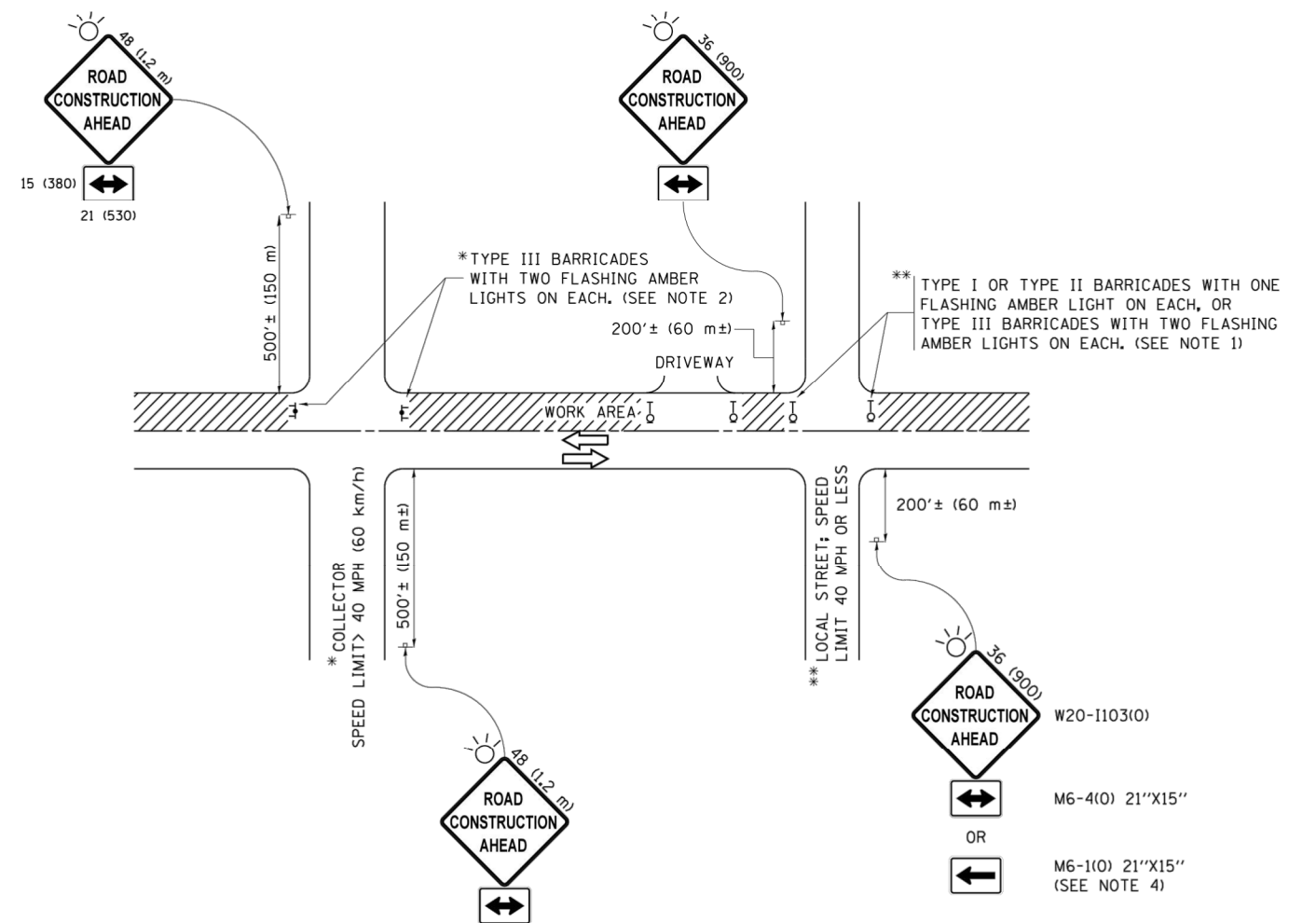
DESIGNED - M. DE YONG	REVISD - R. SHAH 09-09-94
DRAWN -	REVISD - R. SHAH 10-25-94
CHECKED -	REVISD - E. GOMEZ 12-21-00
DATE - 08-04-86	REVISD -

PLOT SCALE = 50.0000' / IN.	
PLOT DATE = 1/4/2008	

**STATE OF ILLINOIS  
DEPARTMENT OF TRANSPORTATION**

<b>OUTLET FOR CONCRETE CURB AND GUTTER</b>	
SCALE: NONE	SHEET NO. 1 OF 1 SHEETS
STA.	TO STA.

FALL RTE.	SECTION	COUNTY	TOTAL SHEETS	SHEET NO.
164	10-00001-00-BT	LAKE	25	17
BD600-01 (BD-03)		CONTRACT #:	61E66	
FED. ROAD DIST. NO. 1 ILLINOIS FED. AID PROJECT				



**NOTES:**

1. SIDE ROAD WITH A SPEED LIMIT OF 40 MPH (60 km/h) OR LESS AS SHOWN ON THE DRAWING AND AS DIRECTED BY THE ENGINEER:
  - a) ONE "ROAD CONSTRUCTION AHEAD" SIGN 36 x 36 (900x900) WITH A FLASHER MOUNTED ON IT APPROXIMATELY 200' (60 m) IN ADVANCE OF THE MAIN ROUTE.
  - b) THE CLOSED PORTION OF THE MAIN ROUTE SHALL BE PROTECTED BY BLOCKING WITH TYPE I, TYPE II OR TYPE III BARRICADES, 1/3 OF THE CROSS SECTION OF THE CLOSED PORTION.
2. SIDE ROAD WITH A SPEED LIMIT GREATER THAN 40 MPH (60 km/h) AS SHOWN ON THE DRAWING AND AS DIRECTED BY THE ENGINEER:
  - a) ONE "ROAD CONSTRUCTION AHEAD" SIGN 48 x 48 (1.2 m x 1.2 m) WITH A FLASHER MOUNTED ON IT APPROXIMATELY 500' (150 m) IN ADVANCE OF THE MAIN ROUTE.
  - b) THE CLOSED PORTION OF THE MAIN ROUTE SHALL BE PROTECTED BY BLOCKING WITH TYPE III BARRICADES, 1/2 OF THE CROSS SECTION OF THE CLOSED PORTION.
3. CONES MAY BE SUBSTITUTED FOR BARRICADES OR DRUMS AT HALF THE SPACING DURING DAY OPERATIONS. CONES SHALL BE A MINIMUM OF 28 (710) IN HEIGHT.
4. WHEN THE SIDE ROAD LIES BETWEEN THE BEGINNING OF THE MAINLINE SIGNING AND THE WORK ZONE, A SINGLE HEADED ARROW (M6-1) SHALL BE USED IN LIEU OF THE DOUBLE HEADED ARROW (M6-4).
5. WHEN WORK IS BEING PERFORMED ON A SIDE ROAD OR DRIVEWAY, FOLLOW THE APPLICABLE STANDARD(S). THE DIRECTIONAL ARROW (M6-1 OR M6-4) SHALL BE COVERED OR REMOVED WHEN NO LONGER CONSISTENT WITH THE TRAFFIC CONTROL SET-UP.
6. ADVANCE WARNING SIGNS ARE TO BE OMITTED ON DRIVEWAYS UNLESS OTHERWISE SPECIFIED IN THE PLANS OR BY THE ENGINEER.
7. THE TRAFFIC CONTROL AND PROTECTION FOR SIDE ROADS, INTERSECTIONS, AND DRIVEWAYS SHALL BE INCLUDED IN THE COST OF SPECIFIED TRAFFIC CONTROL STANDARDS OR ITEMS.

All dimensions are in inches (millimeters) unless otherwise shown.

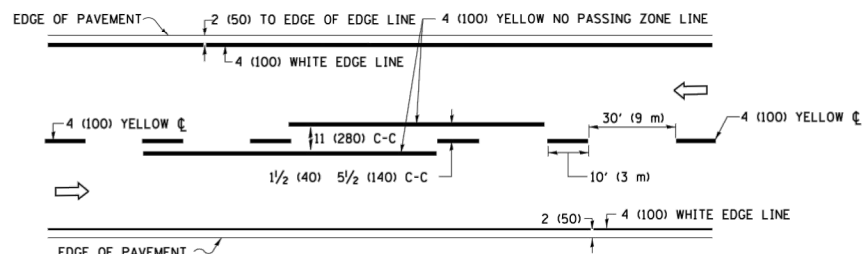
FILE NAME =	USER NAME = footemj	DESIGNED - L.H.A.	REVISED - A. HOUSEH 10-15-96
p:\il\084EBID\INTEG\111\inois.gov\PWIDOT\Documents\IDOT Offices\District 1\Projects\Dist 5\CAD\Drawings\CAD\Drawings\TC10.dgn		DRAWN - T. RAMMACHER 01-06-00	REVISED - T. RAMMACHER 01-06-00
Default	PLOT SCALE = 50.000' / in.	CHECKED -	REVISED - A. SCHUETZE 07-01-13
	PLOT DATE = 9/15/2016	DATE - 06-89	REVISED - A. SCHUETZE 09-15-16

**STATE OF ILLINOIS  
DEPARTMENT OF TRANSPORTATION**

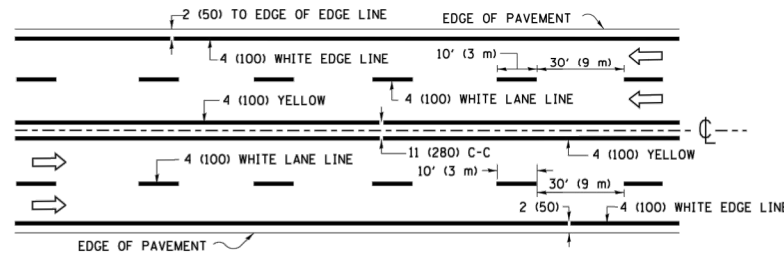
**TRAFFIC CONTROL AND PROTECTION FOR  
SIDE ROADS, INTERSECTIONS, AND DRIVEWAYS**

SCALE: NONE SHEET 1 OF 1 SHEETS STA. TO STA.

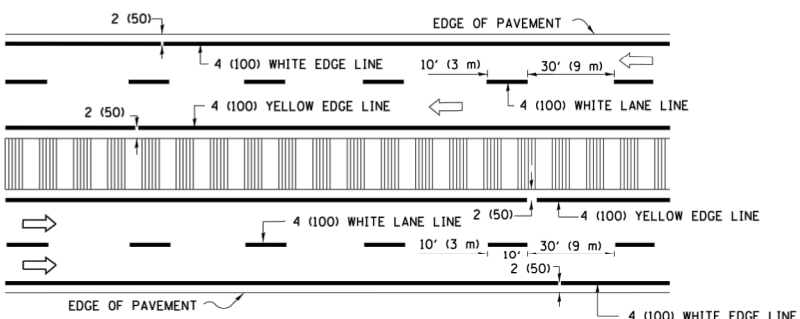
FALL RTE.	SECTION	COUNTY	TOTAL SHEETS	SHEET NO.
164	10-00001-00-BT	LAKE	25	18
TC-10			CONTRACT #:	61E66
ILLINOIS FED. AID PROJECT				



**2-LANE ROADWAY**

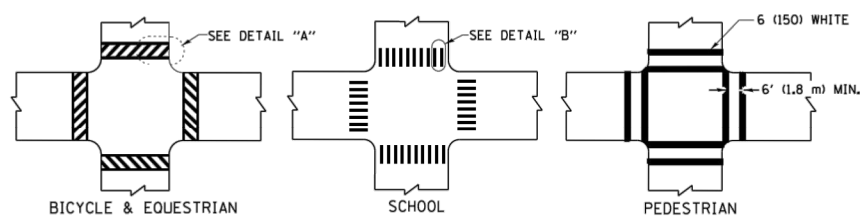


**MULTI-LANE UNDIVIDED**



**MULTI-LANE DIVIDED WITH MEDIAN**

**TYPICAL LANE AND EDGE LINE MARKING**

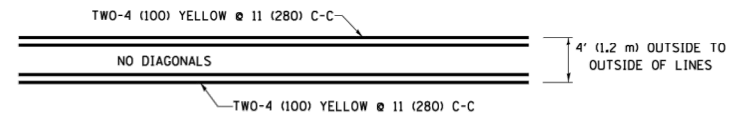


**DETAIL "A"**

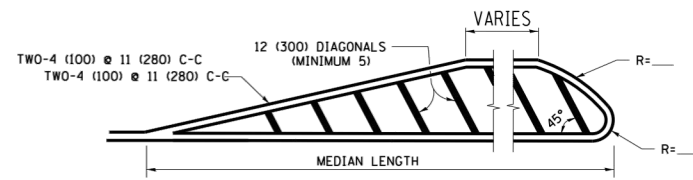
**DETAIL "B"**

**TYPICAL CROSSWALK MARKING**

\* MARKINGS SHALL BE INSTALLED PARALLEL TO THE CENTERLINE OF THE ROAD WHICH IT CROSSES

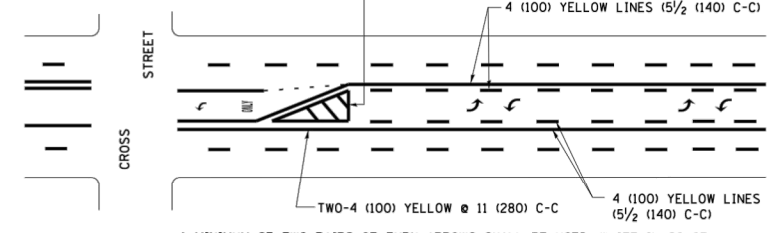


**4' (1.2 m) WIDE MEDIANS ONLY**

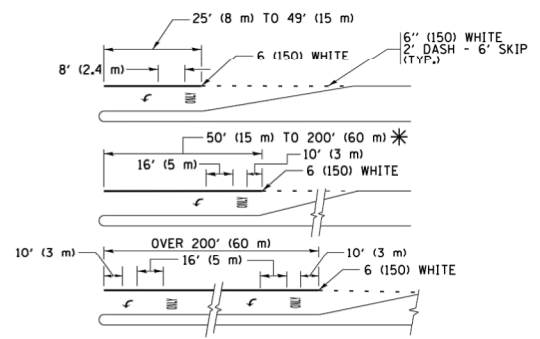


**MEDIANS OVER 4' (1.2 m) WIDE**

DIAGONAL LINE SPACING: 50' (15 m) C-C (LESS THAN 30MPH (50 km/h))  
75' (25 m) C-C 30MPH (50 km/h) TO 45MPH (70 km/h)  
150' (45 m) C-C (MORE THAN 45MPH (70 km/h))



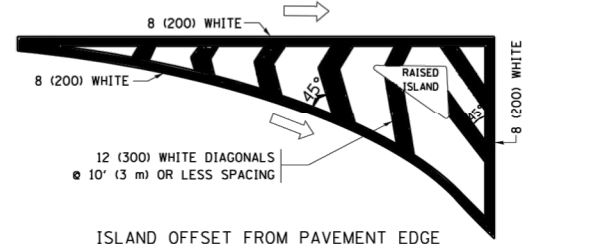
**MEDIAN WITH TWO-WAY LEFT TURN LANE  
TYPICAL PAINTED MEDIAN MARKING**



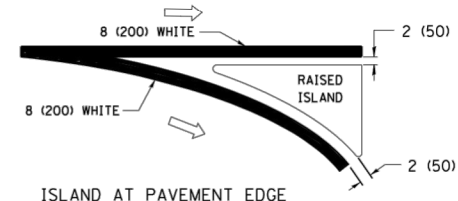
FULL SIZE LETTERS 8' (2.4 m) AND ARROWS SHALL BE USED.  
AREA = 15.6 SQ. FT. (1.5 m<sup>2</sup>) ONLY AREA = 20.8 SQ. FT. (1.9 m<sup>2</sup>)  
\* TURN LANES IN EXCESS OF 400' (120 m) IN LENGTH MAY HAVE AN ADDITIONAL SET OF ARROW - "ONLY" INSTALLED MIDWAY BETWEEN THE OTHER TWO SETS OF ARROW - "ONLY".

**TYPICAL LEFT (OR RIGHT) TURN LANE**

**TYPICAL TURN LANE MARKING**

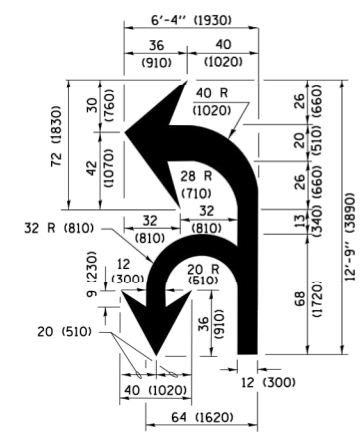


**ISLAND OFFSET FROM PAVEMENT EDGE**

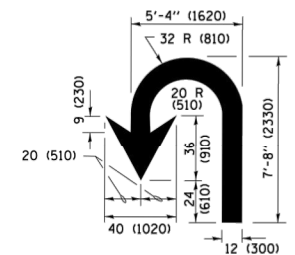


**ISLAND AT PAVEMENT EDGE**

**TYPICAL ISLAND MARKING**



**COMBINATION LEFT AND U-TURN**



**U-TURN**

**LANE REDUCTION TRANSITION**

\* LANE REDUCTION ARROWS REQUIRED AT SPEEDS OF 45 MPH OR GREATER OR WHEN SPECIFIED IN PLANS.

D(FT)	SPEED LIMIT
345	30
425	35
500	40
580	45
665	50
750	55

TYPE OF MARKING	WIDTH OF LINE	PATTERN	COLOR	SPACING /REMARKS
CENTERLINE ON 2 LANE PAVEMENT	4 (100)	SKIP-DASH	YELLOW	10' (3 m) LINE WITH 30' (9 m) SPACE
CENTERLINE ON MULTI-LANE UNDIVIDED PAVEMENT	2 @ 4 (100)	SOLID	YELLOW	11 (280) C-C
NO PASSING ZONE LINES FOR ONE DIRECTION FOR BOTH DIRECTIONS	4 (100) 2 @ 4 (100)	SOLID SOLID	YELLOW YELLOW	5 1/2 (140) C-C FROM SKIP-DASH CENTERLINE 11 (280) C-C OMIT SKIP-DASH CENTERLINE BETWEEN
LANE LINES	4 (100) 5 (125) ON FREEWAYS	SKIP-DASH SKIP-DASH	WHITE WHITE	10' (3 m) LINE WITH 30' (9 m) SPACE
DOTTED LINES (EXTENSIONS OF CENTER, LANE OR TURN LANE MARKINGS)	SAME AS LINE BEING EXTENDED	SKIP-DASH	SAME AS LINE BEING EXTENDED	2' (600) LINE WITH 6' (1.0 m) SPACE
EDGE LINES	4 (100)	SOLID	YELLOW-LEFT WHITE-RIGHT	OUTLINE MEDIANS IN YELLOW
TURN LANE MARKINGS	6 (150) LINE; FULL SIZE LETTERS & SYMBOLS (8' (2.4m))	SOLID	WHITE	SEE TYPICAL TURN LANE MARKING DETAIL
TWO WAY LEFT TURN MARKING	2 @ 4 (100) EACH DIRECTION 8' (2.4m) LEFT ARROW	SKIP-DASH AND SOLID IN PAIRS	YELLOW WHITE	10' (3 m) LINE WITH 30' (9 m) SPACE FOR SKIP-DASH 5 1/2 (140) C-C BETWEEN SOLID LINE AND SKIP-DASH LINE SEE TYPICAL TWO-WAY LEFT TURN MARKING DETAIL
CROSSWALK LINES (PEDESTRIAN) A. DIAGONALS (BIKE & EQUESTRIAN) B. LONGITUDINAL BARS (SCHOOL)	2 @ 6 (150) 12 (300) @ 45° 12 (300) @ 90°	SOLID SOLID SOLID	WHITE WHITE WHITE	NOT LESS THAN 6' (1.8 m) APART 2' (600) APART SEE TYPICAL CROSSWALK MARKING DETAILS.
STOP LINES	24 (600)	SOLID	WHITE	PLACE 4' (1.2 m) IN ADVANCE OF AND PARALLEL TO CROSSWALK, IF PRESENT, OTHERWISE, PLACE AT DESIRED STOPPING POINT, PARALLEL TO CROSSROAD CENTERLINE, WHERE POSSIBLE
PAINTED MEDIANS	2 @ 4 (100) WITH 12 (300) DIAGONALS @ 45° NO DIAGONALS USED FOR 4' (1.2 m) WIDE MEDIANS	SOLID	YELLOW; TWO WAY TRAFFIC WHITE; ONE WAY TRAFFIC	11 (280) C-C FOR THE DOUBLE LINE SEE TYPICAL PAINTED MEDIAN MARKING.
GORE MARKING AND CHANNELIZING LINES	8 (200) WITH 12 (300) DIAGONALS @ 45°	SOLID	WHITE	DIAGONALS: 15' (4.5 m) C-C (LESS THAN 30MPH (50 km/h)) 20' (6 m) C-C 30MPH (50 km/h) TO 45MPH (70 km/h) 30' (9 m) C-C (OVER 45MPH (70 km/h))
RAILROAD CROSSING	24 (600) TRANSVERSE LINES; "RR" IS 6' (1.8 m) LETTERS; 16 (400) LINE FOR "X"	SOLID	WHITE	SEE STATE STANDARD 780001 AREA OF "RR" IS 6' (1.8 m) LETTERS; 16 (400) LINE FOR "X" "X"=54.0 SQ. FT. (5.0 m <sup>2</sup> )
SHOULDER DIAGONALS (REQUIRED FOR SHOULDERS ≥ 8')	12 (300) @ 45°	SOLID	WHITE - RIGHT YELLOW - LEFT	50' (15 m) C-C (LESS THAN 30MPH (50 km/h)) 75' (25 m) C-C (30 MPH (50 km/h) TO 45MPH (70 km/h)) 150' (45 m) C-C (OVER 45MPH (70 km/h))
U TURN ARROW	SEE DETAIL	SOLID	WHITE	16.3 SF
2 ARROW COMBINATION LEFT AND U TURN	SEE DETAIL	SOLID	WHITE	30.4 SF

FOR FURTHER DETAILS ON PAVEMENT MARKING REFER TO STANDARD SPECIFICATIONS FOR ROAD AND BRIDGE CONSTRUCTION AND STATE STANDARD 780001.

All dimensions are in inches (millimeters) unless otherwise shown.

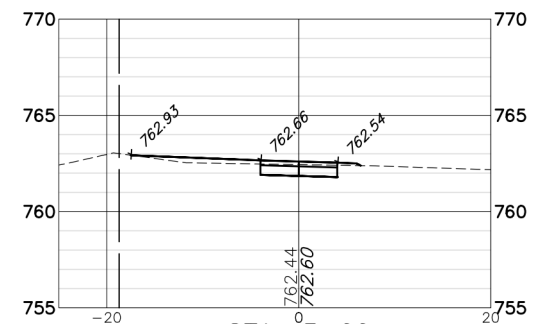
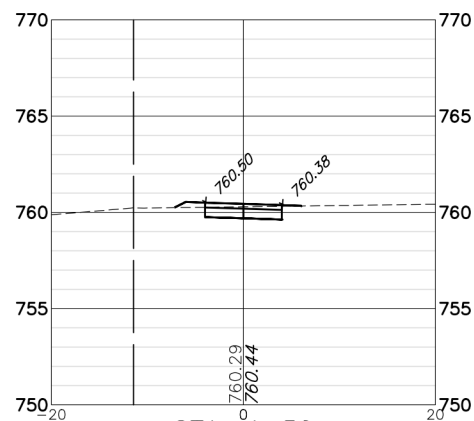
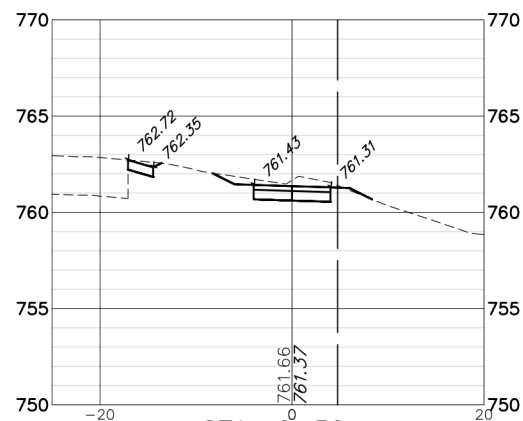
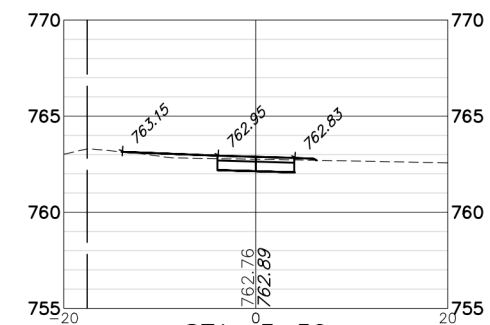
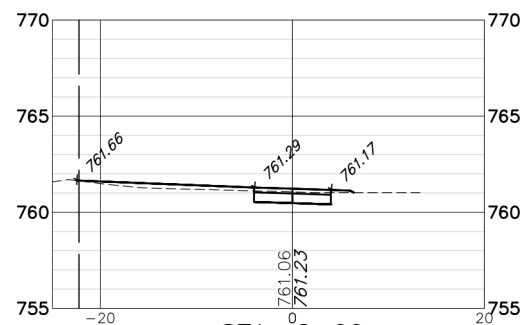
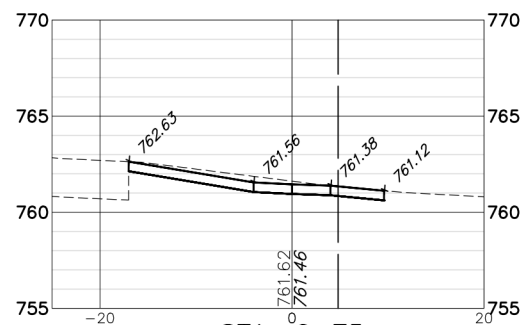
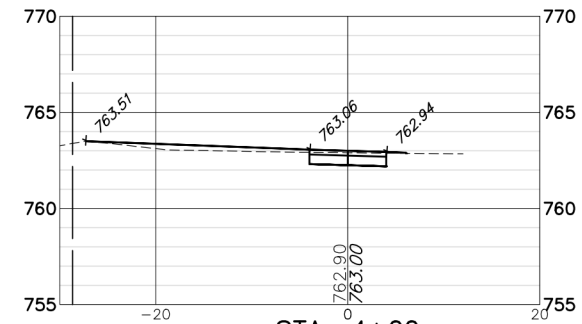
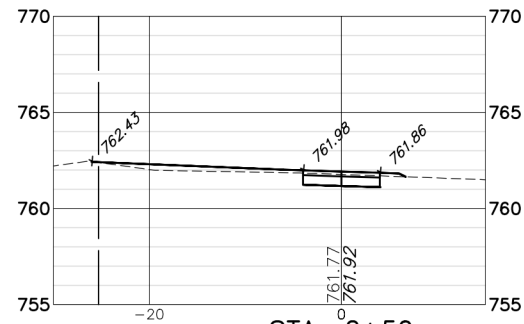
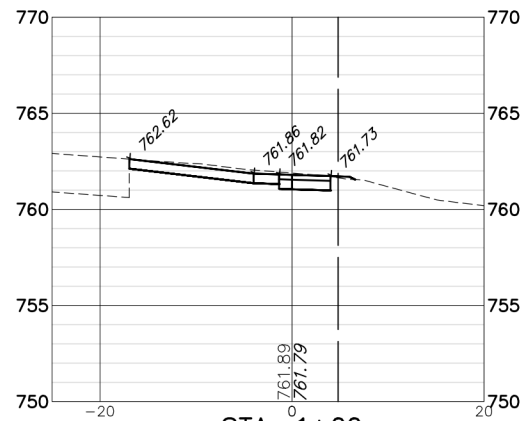
GHA GEWALT HAMILTON ASSOCIATES, INC. 625 Forest Edge Drive Vernon Hills, IL 60061 FAX: (847) 485-0100

FILE NAME = W:\dstatd\22x34\tc13.dgn	USER NAME = l1950	DESIGNED - EVERS	REVISED - C. JUCIUS 09-09-09
Default	PLOT SCALE = 50.000' / in.	DRAWN -	REVISED - C. JUCIUS 07-01-13
	PLOT DATE = 6/23/2017	CHECKED -	REVISED - C. JUCIUS 12-21-15
		DATE - 03-19-90	REVISED - C. JUCIUS 04-12-16

**STATE OF ILLINOIS  
DEPARTMENT OF TRANSPORTATION**

<b>DISTRICT ONE</b>			
<b>TYPICAL PAVEMENT MARKINGS</b>			
SCALE: NONE	SHEET 1	OF 1 SHEETS	STA. TO STA.

FILE NO.	SECTION	COUNTY	TOTAL SHEETS	SHEET NO.
164	10-00001-00-BT	LAKE	25	19
TC-13			CONTRACT #:	61E66
ILLINOIS FED. AID PROJECT				



FILE NAME = 4052.900\_PRES.dwg



USER NAME = ZACH WALLSTEN  
 PLOT SCALE = 1" = .0833'  
 PLOT DATE = 2/27/2007 1:35 PM

DESIGNED - MAC  
 DRAWN - ZCW  
 CHECKED - MAC  
 DATE -

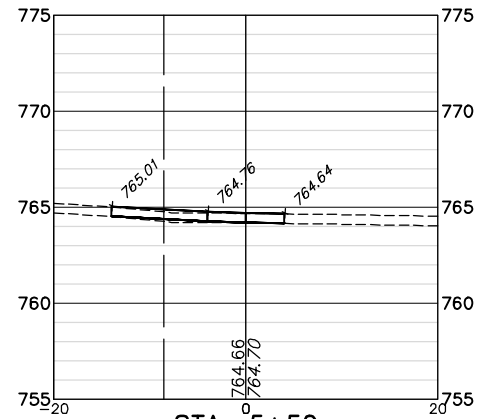
REVISED -  
 REVISED -  
 REVISED -  
 REVISED -

STATE OF ILLINOIS  
 DEPARTMENT OF TRANSPORTATION

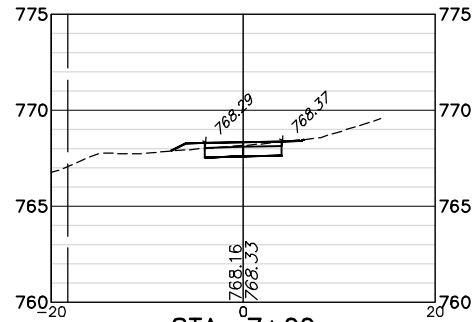
CROSS SECTIONS  
 MOLIDOR ROAD BIKE PATH

SCALE 1"=10' SHEET NO. 1 OF 6 SHEETS STA. 0+50 TO STA. 4+00

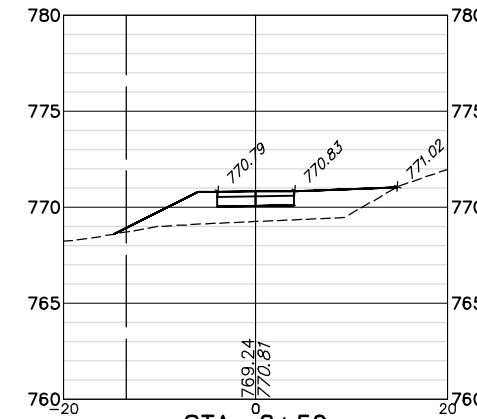
FAU. RTE.	SECTION	COUNTY	TOTAL SHEETS	SHEET NO.
164	10-00001-00-BT	LAKE	25	20
CONTRACT #:			61E66	
ILLINOIS FED. AID PROJECT				



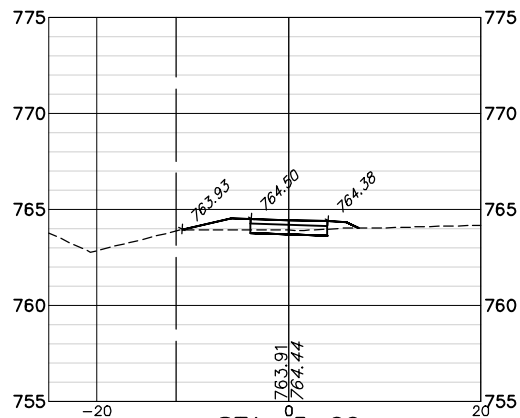
**STA: 5+50**  
 EARTHWORK CUT = 9.00  
 EARTHWORK FILL = 1.20  
 TOPSOIL CUT = 0.0  
 TOPSOIL FILL = 0.0



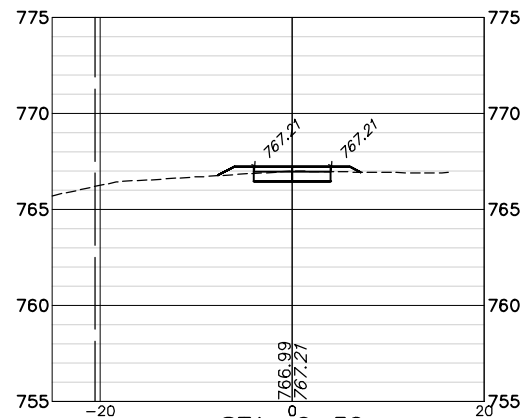
**STA: 7+00**  
 EARTHWORK CUT = 2.07  
 EARTHWORK FILL = 0.90  
 TOPSOIL CUT = 4.64  
 TOPSOIL FILL = 1.97



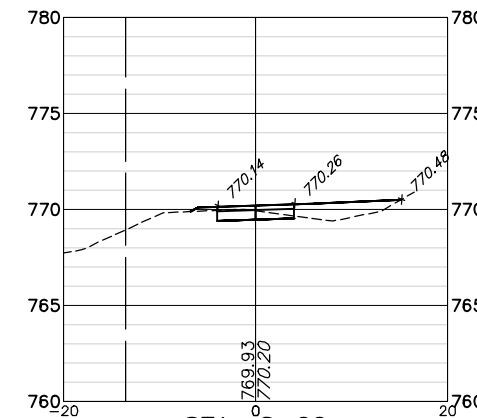
**STA: 8+50**  
 EARTHWORK CUT = 0.0  
 EARTHWORK FILL = 30.92  
 TOPSOIL CUT = 9.82  
 TOPSOIL FILL = 7.15



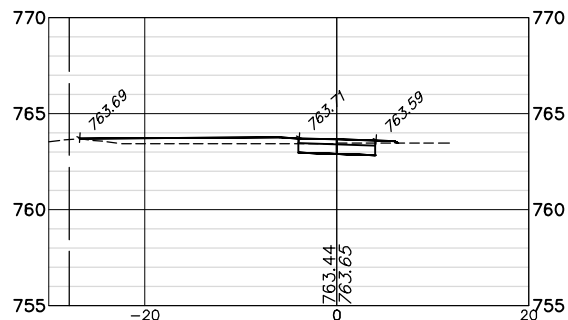
**STA: 5+00**  
 EARTHWORK CUT = 0.0  
 EARTHWORK FILL = 4.50  
 TOPSOIL CUT = 6.15  
 TOPSOIL FILL = 3.48



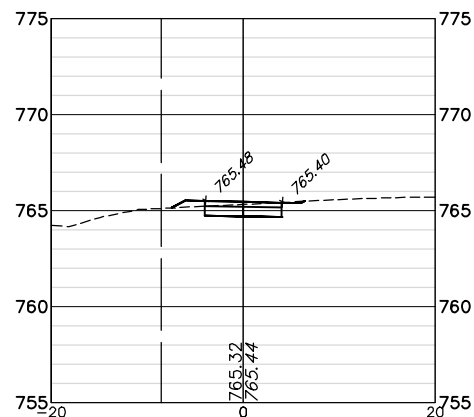
**STA: 6+50**  
 EARTHWORK CUT = 1.25  
 EARTHWORK FILL = 1.79  
 TOPSOIL CUT = 4.98  
 TOPSOIL FILL = 2.31



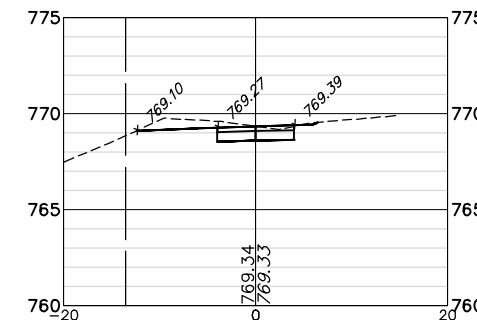
**STA: 8+00**  
 EARTHWORK CUT = 0.22  
 EARTHWORK FILL = 8.99  
 TOPSOIL CUT = 7.34  
 TOPSOIL FILL = 4.68



**STA: 4+50**  
 EARTHWORK CUT = 1.70  
 EARTHWORK FILL = 6.17  
 TOPSOIL CUT = 11.09  
 TOPSOIL FILL = 8.42



**STA: 6+00**  
 EARTHWORK CUT = 0.12  
 EARTHWORK FILL = 0.99  
 TOPSOIL CUT = 4.14  
 TOPSOIL FILL = 1.97



**STA: 7+50**  
 EARTHWORK CUT = 7.14  
 EARTHWORK FILL = 0.0  
 TOPSOIL CUT = 6.27  
 TOPSOIL FILL = 3.61

FILE NAME = 4052.900\_PRES.dwg



USER NAME = ZACH WALLSTEN  
 PLOT SCALE = 1" = .0833'  
 PLOT DATE = 2/27/2007 1:09 PM

DESIGNED - MAC  
 DRAWN - ZCW  
 CHECKED - MAC  
 DATE -

REVISED -  
 REVISED -  
 REVISED -  
 REVISED -

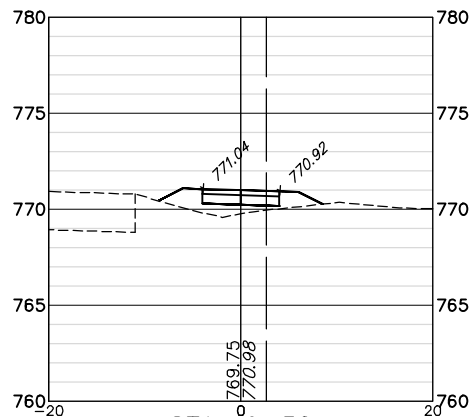
**STATE OF ILLINOIS  
 DEPARTMENT OF TRANSPORTATION**

**CROSS SECTIONS  
 MOLDOR ROAD BIKE PATH**

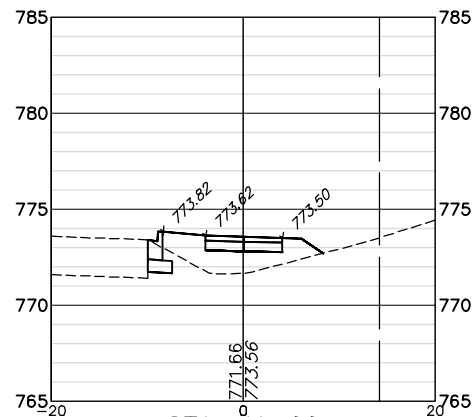
SCALE 1"=10' SHEET NO. 2 OF 6 SHEETS STA. 4+50 TO STA. 8+50

FALL RITE	SECTION	COUNTY	TOTAL SHEETS	SHEET NO.
164	10-00001-00-BT	LAKE	25	21
CONTRACT #			61E66	
ILLINOIS FED. AID PROJECT				

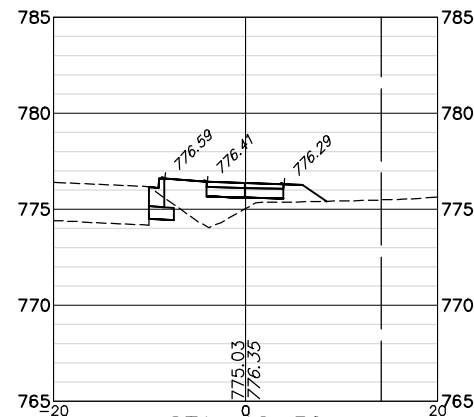




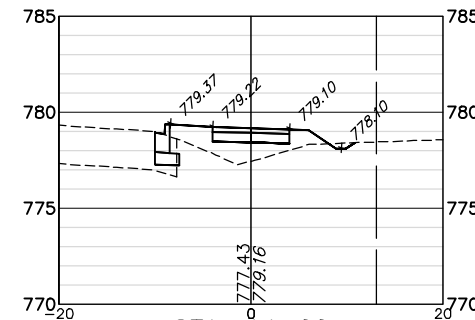
**STA: 9+50**  
 EARTHWORK CUT = 0.0  
 EARTHWORK FILL = 12.51  
 TOPSOIL CUT = 5.70  
 TOPSOIL FILL = 3.04



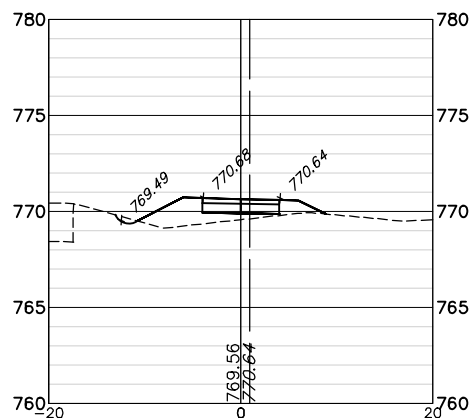
**STA: 11+00**  
 EARTHWORK CUT = 0.0  
 EARTHWORK FILL = 20.57  
 TOPSOIL CUT = 6.08  
 TOPSOIL FILL = 2.90



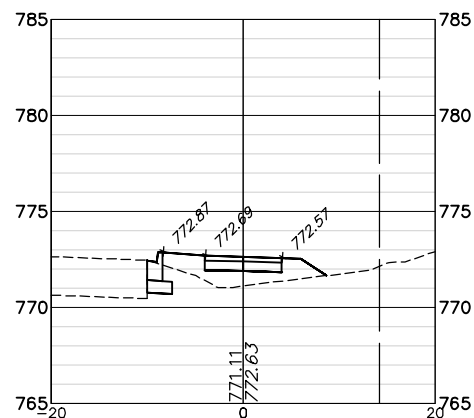
**STA: 12+50**  
 EARTHWORK CUT = 0.0  
 EARTHWORK FILL = 18.73  
 TOPSOIL CUT = 8.87  
 TOPSOIL FILL = 2.98



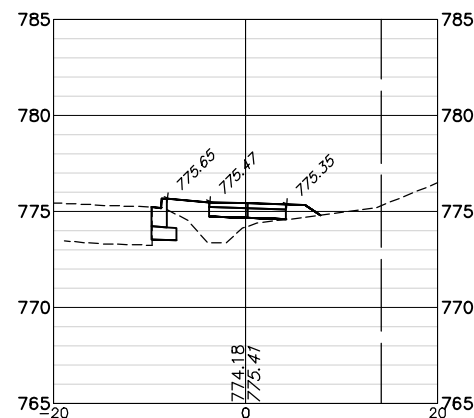
**STA: 14+00**  
 EARTHWORK CUT = 0.51  
 EARTHWORK FILL = 16.52  
 TOPSOIL CUT = 6.17  
 TOPSOIL FILL = 3.74



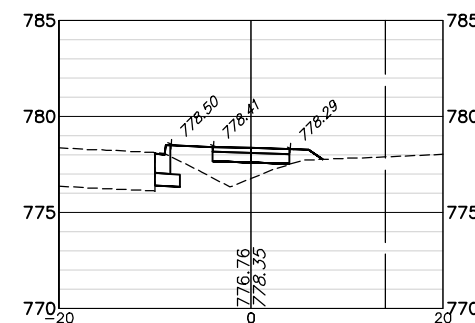
**STA: 9+25**  
 EARTHWORK CUT = 0.0  
 EARTHWORK FILL = 14.64  
 TOPSOIL CUT = 7.31  
 TOPSOIL FILL = 3.89



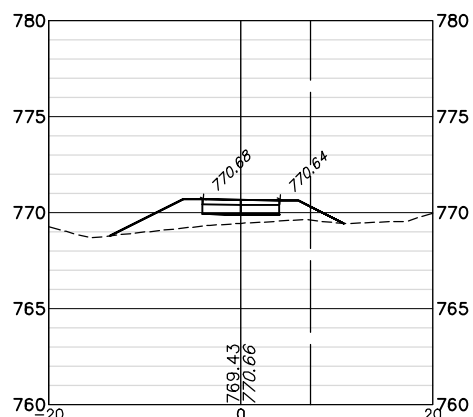
**STA: 10+50**  
 EARTHWORK CUT = 0.0  
 EARTHWORK FILL = 16.11  
 TOPSOIL CUT = 6.22  
 TOPSOIL FILL = 3.02



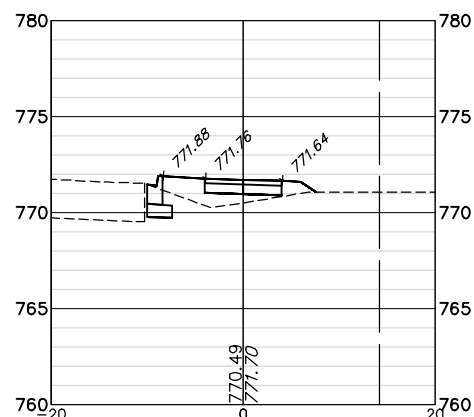
**STA: 12+00**  
 EARTHWORK CUT = 0.0  
 EARTHWORK FILL = 14.99  
 TOPSOIL CUT = 5.84  
 TOPSOIL FILL = 2.67



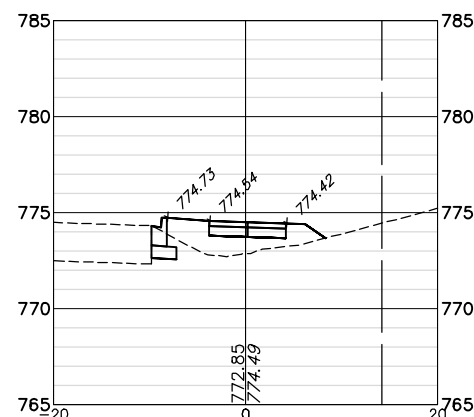
**STA: 13+50**  
 EARTHWORK CUT = 0.0  
 EARTHWORK FILL = 15.17  
 TOPSOIL CUT = 5.83  
 TOPSOIL FILL = 2.63



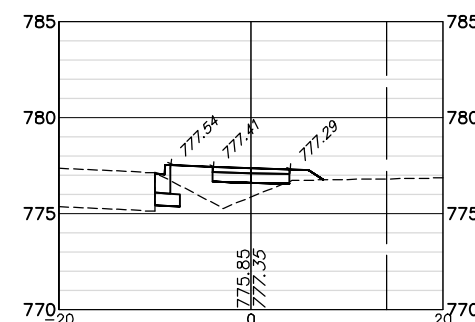
**STA: 9+00**  
 EARTHWORK CUT = 0.0  
 EARTHWORK FILL = 19.51  
 TOPSOIL CUT = 8.11  
 TOPSOIL FILL = 5.45



**STA: 10+00**  
 EARTHWORK CUT = 0.0  
 EARTHWORK FILL = 12.74  
 TOPSOIL CUT = 5.87  
 TOPSOIL FILL = 2.67



**STA: 11+50**  
 EARTHWORK CUT = 0.0  
 EARTHWORK FILL = 18.36  
 TOPSOIL CUT = 6.05  
 TOPSOIL FILL = 2.86



**STA: 13+00**  
 EARTHWORK CUT = 0.0  
 EARTHWORK FILL = 15.80  
 TOPSOIL CUT = 5.84  
 TOPSOIL FILL = 2.64

FILE NAME = 4052.900\_PRES.dwg



USER NAME = ZACH WALLSTEN  
 PLOT SCALE = 1" = .0833'  
 PLOT DATE = 2/27/2007 1:09 PM

DESIGNED - MAC  
 DRAWN - ZCW  
 CHECKED - MAC  
 DATE -

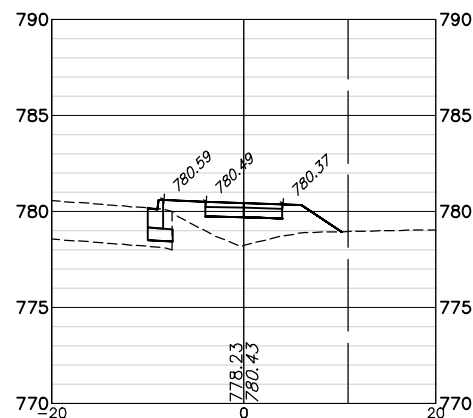
REVISED -  
 REVISED -  
 REVISED -  
 REVISED -

**STATE OF ILLINOIS  
 DEPARTMENT OF TRANSPORTATION**

**CROSS SECTIONS  
 MOLDOR ROAD BIKE PATH**

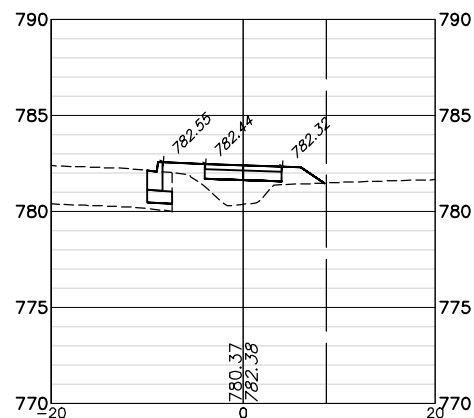
SCALE 1"=10' SHEET NO. 3 OF 6 SHEETS STA. 9+00 TO STA. 14+00

FALL RTE.	SECTION	COUNTY	TOTAL SHEETS	SHEET NO.
164	10-00001-00-BT	LAKE	25	22
CONTRACT #			61E66	
ILLINOIS FED. AID PROJECT				



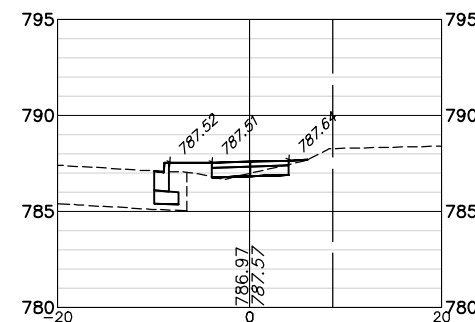
STA: 15+00

EARTHWORK CUT = 0.0  
 EARTHWORK FILL = 23.19  
 TOPSOIL CUT = 5.88  
 TOPSOIL FILL = 3.53



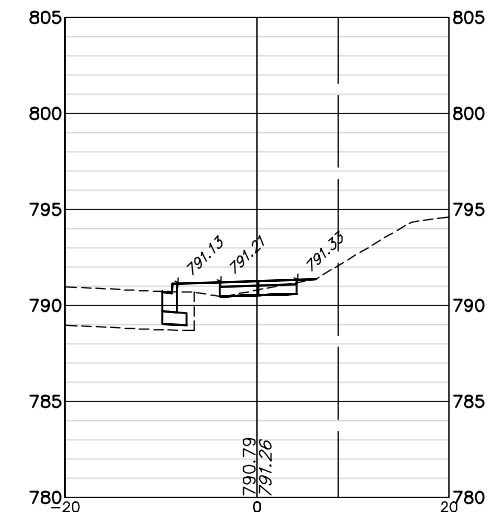
STA: 16+00

EARTHWORK CUT = 0.0  
 EARTHWORK FILL = 16.59  
 TOPSOIL CUT = 5.27  
 TOPSOIL FILL = 2.95



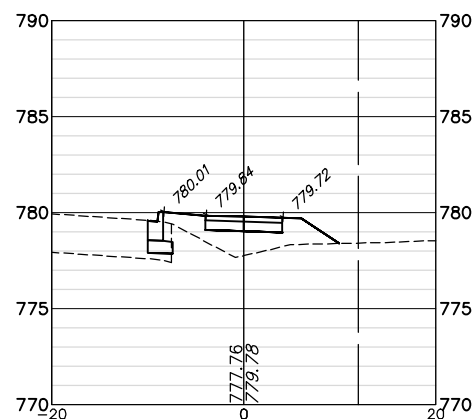
STA: 17+50

EARTHWORK CUT = 0.23  
 EARTHWORK FILL = 5.49  
 TOPSOIL CUT = 4.19  
 TOPSOIL FILL = 2.14



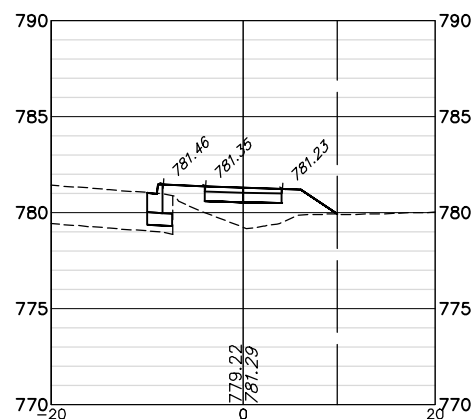
STA: 18+50

EARTHWORK CUT = 0.45  
 EARTHWORK FILL = 4.77  
 TOPSOIL CUT = 4.21  
 TOPSOIL FILL = 2.14



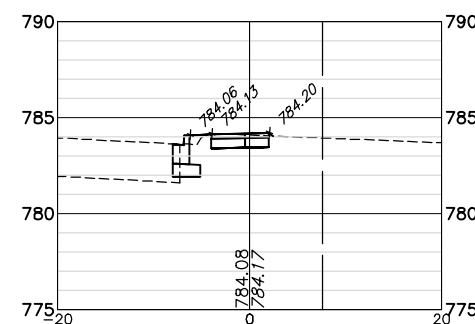
STA: 14+50

EARTHWORK CUT = 0.0  
 EARTHWORK FILL = 20.85  
 TOPSOIL CUT = 5.82  
 TOPSOIL FILL = 3.44



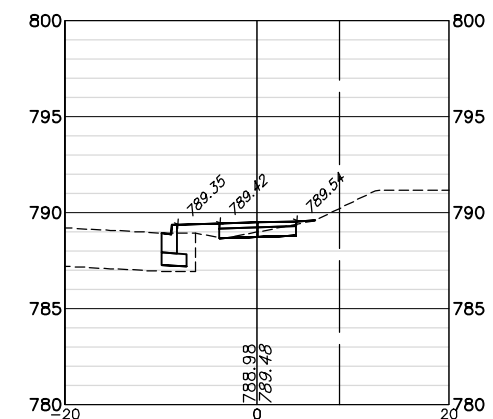
STA: 15+50

EARTHWORK CUT = 0.0  
 EARTHWORK FILL = 27.14  
 TOPSOIL CUT = 5.71  
 TOPSOIL FILL = 3.39



STA: 16+50

EARTHWORK CUT = 0.01  
 EARTHWORK FILL = 2.73  
 TOPSOIL CUT = 3.25  
 TOPSOIL FILL = 0.92



STA: 18+00

EARTHWORK CUT = 0.39  
 EARTHWORK FILL = 4.98  
 TOPSOIL CUT = 4.17  
 TOPSOIL FILL = 2.14

FILE NAME = 4052.900\_PRES.dwg



USER NAME = ZACH WALLSTEN  
 PLOT SCALE = 1" = .0833'  
 PLOT DATE = 2/27/2007 1:09 PM

DESIGNED - MAC  
 DRAWN - ZCW  
 CHECKED - MAC  
 DATE -

REVISED -  
 REVISED -  
 REVISED -  
 REVISED -

STATE OF ILLINOIS  
 DEPARTMENT OF TRANSPORTATION

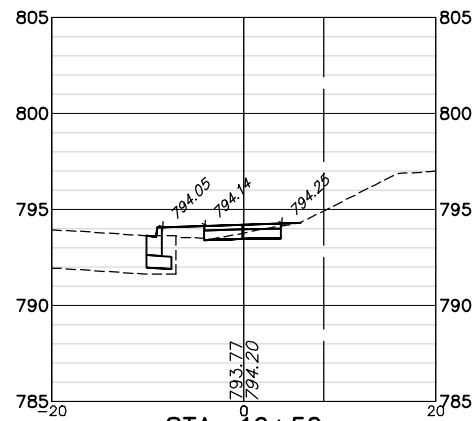
CROSS SECTIONS  
 MOLDOR ROAD BIKE PATH

SCALE 1"=10'

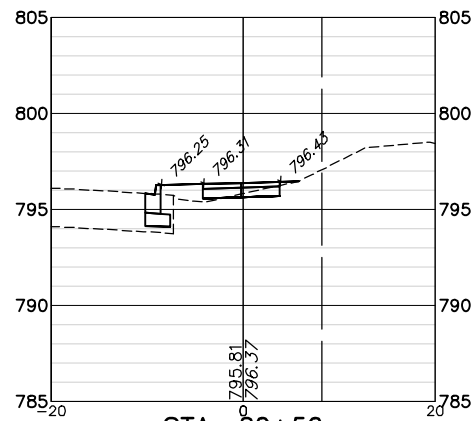
SHEET NO. 4 OF 6 SHEETS

STA. 14+50 TO STA. 18+50

FALL RITE	SECTION	COUNTY	TOTAL SHEETS	SHEET NO.
164	10-00001-00-BT	LAKE	25	23
CONTRACT #			61E66	
ILLINOIS FED. AID PROJECT				



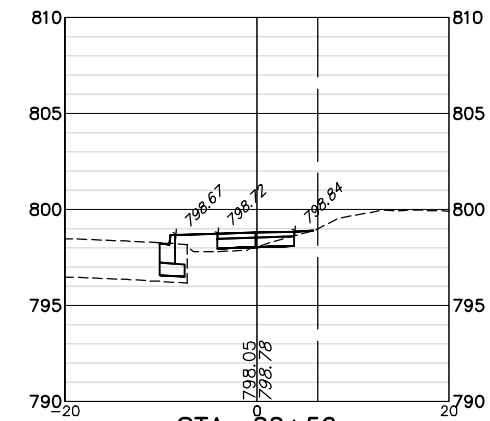
**STA: 19+50**  
 EARTHWORK CUT = 0.59  
 EARTHWORK FILL = 4.32  
 TOPSOIL CUT = 4.32  
 TOPSOIL FILL = 2.14



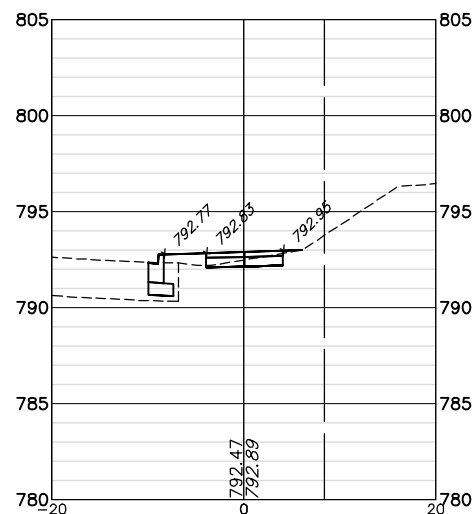
**STA: 20+50**  
 EARTHWORK CUT = 0.27  
 EARTHWORK FILL = 5.85  
 TOPSOIL CUT = 4.35  
 TOPSOIL FILL = 2.14



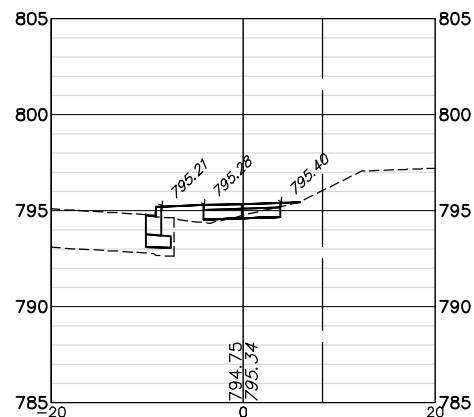
**STA: 21+50**  
 EARTHWORK CUT = 0.25  
 EARTHWORK FILL = 5.83  
 TOPSOIL CUT = 4.43  
 TOPSOIL FILL = 2.14



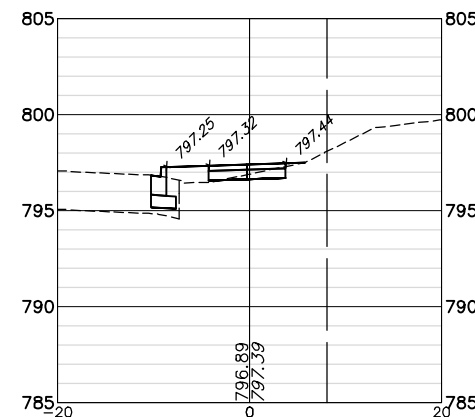
**STA: 22+50**  
 EARTHWORK CUT = 0.16  
 EARTHWORK FILL = 6.76  
 TOPSOIL CUT = 4.39  
 TOPSOIL FILL = 2.14



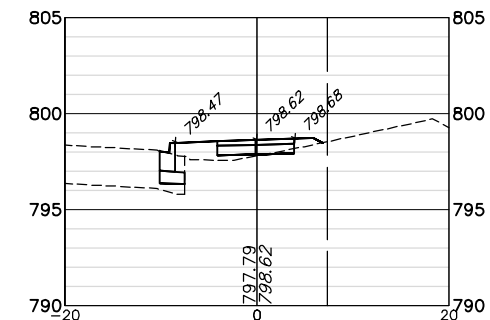
**STA: 19+00**  
 EARTHWORK CUT = 0.57  
 EARTHWORK FILL = 4.16  
 TOPSOIL CUT = 4.29  
 TOPSOIL FILL = 2.14



**STA: 20+00**  
 EARTHWORK CUT = 0.24  
 EARTHWORK FILL = 5.99  
 TOPSOIL CUT = 4.36  
 TOPSOIL FILL = 2.14



**STA: 21+00**  
 EARTHWORK CUT = 0.36  
 EARTHWORK FILL = 5.58  
 TOPSOIL CUT = 4.34  
 TOPSOIL FILL = 2.14



**STA: 22+00**  
 EARTHWORK CUT = 0.0  
 EARTHWORK FILL = 8.64  
 TOPSOIL CUT = 4.80  
 TOPSOIL FILL = 2.47

FILE NAME = 4052.900\_PRES.dwg



USER NAME = ZACH WALLSTEN  
 PLOT SCALE = 1" = .0833'  
 PLOT DATE = 2/27/2007 1:09 PM

DESIGNED - MAC  
 DRAWN - ZCW  
 CHECKED - MAC  
 DATE -

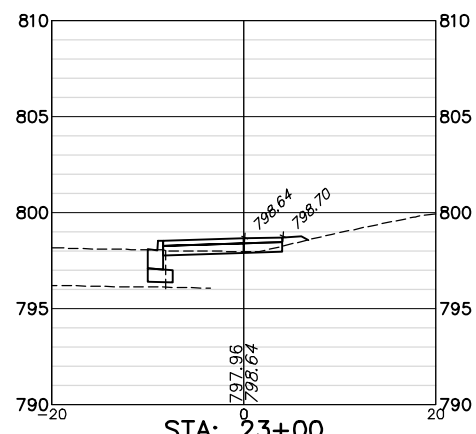
REVISED -  
 REVISED -  
 REVISED -  
 REVISED -

STATE OF ILLINOIS  
 DEPARTMENT OF TRANSPORTATION

CROSS SECTIONS  
 MOLDOR ROAD BIKE PATH

SCALE 1"=10' SHEET NO. 5 OF 6 SHEETS STA. 19+00 TO STA. 22+50

FALL RITE	SECTION	COUNTY	TOTAL SHEETS	SHEET NO.
164	10-00001-00-BT	LAKE	25	24
CONTRACT #			61E66	
ILLINOIS FED. AID PROJECT				



EARTHWORK CUT = 0.0  
 EARTHWORK FILL = 3.17  
 TOPSOIL CUT = 4.94  
 TOPSOIL FILL = 0.90

FILE NAME = 4052.900\_PRES.dwg

	USER NAME = ZACH WALLSTEN	DESIGNED - MAC	REVISED -	<b>STATE OF ILLINOIS          DEPARTMENT OF TRANSPORTATION</b>	<b>CROSS SECTIONS          MOLIDOR ROAD BIKE PATH</b>			<table border="1"> <tr> <th>FALL RTE.</th> <th>SECTION</th> <th>COUNTY</th> <th>TOTAL SHEETS</th> <th>SHEET NO.</th> </tr> <tr> <td>164</td> <td>10-00001-00-BT</td> <td>LAKE</td> <td>25</td> <td>25</td> </tr> </table>	FALL RTE.	SECTION	COUNTY	TOTAL SHEETS	SHEET NO.	164	10-00001-00-BT	LAKE	25	25
	FALL RTE.	SECTION	COUNTY		TOTAL SHEETS	SHEET NO.												
164	10-00001-00-BT	LAKE	25		25													
PLOT SCALE = 1" = .0833'	CHECKED - MAC	REVISED -	<table border="1"> <tr> <td colspan="2">SCALE 1"=10'</td> <td>SHEET NO. 6 OF 6 SHEETS</td> <td>STA. 23+00</td> <td>TO STA.</td> </tr> </table>		SCALE 1"=10'		SHEET NO. 6 OF 6 SHEETS	STA. 23+00	TO STA.	<table border="1"> <tr> <td colspan="2">ILLINOIS FED. AID PROJECT</td> <td>CONTRACT #:</td> <td>61E66</td> </tr> </table>	ILLINOIS FED. AID PROJECT		CONTRACT #:	61E66				
SCALE 1"=10'		SHEET NO. 6 OF 6 SHEETS	STA. 23+00	TO STA.														
ILLINOIS FED. AID PROJECT		CONTRACT #:	61E66															
PLOT DATE = 2/27/2007 1:09 PM	DATE -	REVISED -																