

04-27-2018 LETTING ITEM 154

STATE OF ILLINOIS
DEPARTMENT OF TRANSPORTATION

F.A.P. RTE.	SECTION	COUNTY	TOTAL SHEETS	SHEET NO.
344	46-1SB-1-BR	LAKE	25	1
		ILLINOIS	CONTRACT NO. 62F34	

*25+4= 29 TOTAL SHEETS

D-91-284-17

FOR INDEX OF SHEETS, SEE SHEET NO. 2

THE IMPROVEMENT IS LOCATED
IN THE VILLAGE OF LIBERTYVILLE.

TRAFFIC DATA

IL 137 (BUCKLEY RD.)

ADT (2015) = 11,700

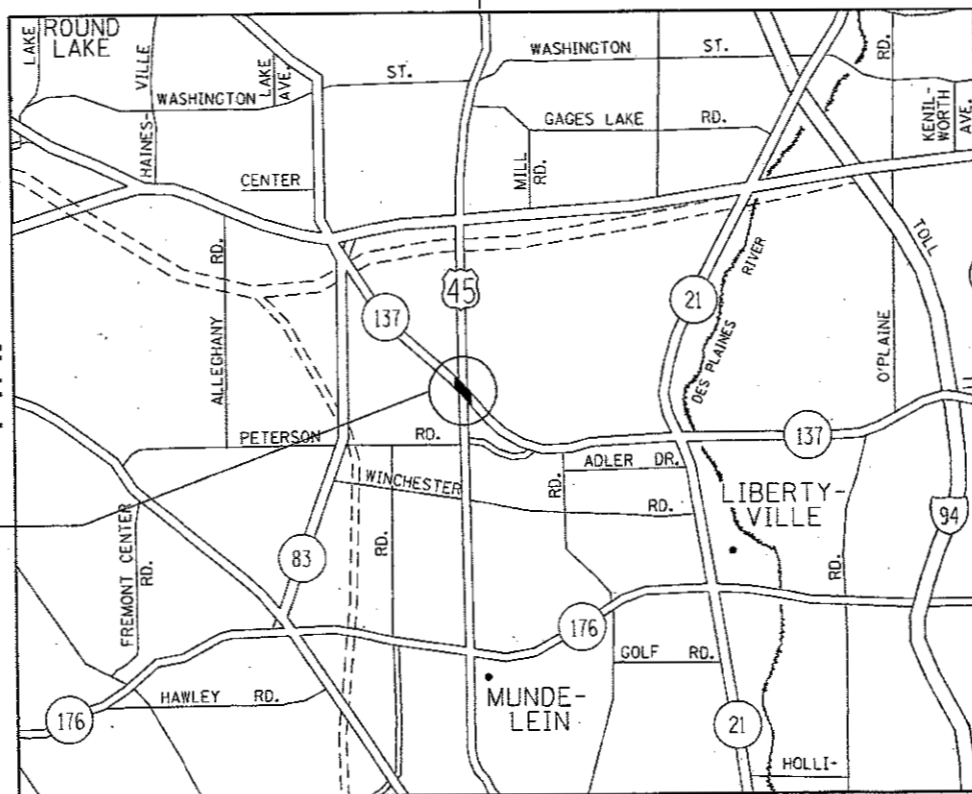
POSTED SPEED LIMIT = 45 MPH

**PROPOSED
HIGHWAY PLANS**

F.A.P. ROUTE 344 - US 45 (LAKE ST.)
AT IL 137 (BUCKLEY RD.)
SECTION: 46-1SB-1-BR
BRIDGE JOINT REPAIR; BRIDGE DECK REPAIRS
LAKE COUNTY

C-91-284-17

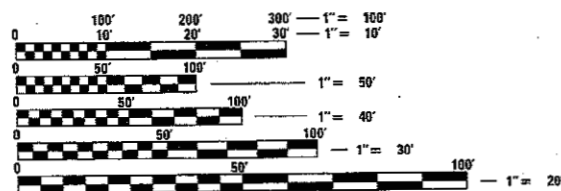
R 10 E | R 11 E



LOCATION OF
IMPROVEMENT:
SN 049-0170

FREMONT & LIBERTYVILLE TOWNSHIPS

GROSS & NET LENGTH = 280.0 FT. = 0.053 MILES



FULL SIZE PLANS HAVE BEEN PREPARED USING STANDARD
ENGINEERING SCALES. REDUCED SIZED PLANS WILL NOT
CONFORM TO STANDARD SCALES. IN MAKING MEASUREMENTS
ON REDUCED PLANS, THE ABOVE SCALES MAY BE USED.

J.U.L.I.E.
JOINT UTILITY LOCATION INFORMATION FOR EXCAVATION
1-800-892-0123
OR 811

PROJECT ENGINEER J. ALAIN MIDY (847) 221-3056
PROJECT MANAGER FAWAD AQUEEL (847) 705-4247

CONTRACT NO. 62F34



LOCATION OF SECTION INDICATED THUS: - ■ -

STATE OF ILLINOIS
DEPARTMENT OF TRANSPORTATION

SUBMITTED JANUARY 24 20 18

Anthony J. Quigley / *CHS*
REGIONAL ENGINEER

Mar 23 20 18
cc *E.A. Elk*

ENGINEER OF DESIGN AND ENVIRONMENT

Paul P. Chaf
DIRECTOR OF PROGRAM DEVELOPMENT

PRINTED BY THE AUTHORITY
OF THE STATE OF ILLINOIS

INDEX OF SHEETS

SHEET NO.	DESCRIPTION
1	COVER SHEET
2	INDEX OF SHEETS, STANDARDS, AND GENERAL NOTES
3-4	SUMMARY OF QUANTITIES
5-12	BRIDGE PLANS (SN 049-0170)
13	DETOUR PLAN
14-18	STAGING PLANS
19	FINAL PAVEMENT MARKING PLANS
20	MAXIMUM WIDTH SIGN DETAIL
20A-20D	TRAFFIC SIGNAL PLANS
21	TRAFFIC CONTROL AND PROTECTION FOR SIDE ROADS, INTERSECTIONS, AND DRIVEWAYS (TC-10)
22	RAISED REFLECTIVE PAVEMENT MARKERS (SNOW-PLOW RESISTANT) (TC-11)
23	DISTRICT ONE TYPICAL PAVEMENT MARKINGS (TC-13)
24	TRAFFIC CONTROL AND PROTECTION AT TURN BAYS (TO REMAIN OPEN TO TRAFFIC) (TC-14)
25	ARTERIAL ROAD INFORMATION SIGN (TC-22)

HIGHWAY STANDARDS

STANDARD NO.	DESCRIPTION
701006-05	OFF-ROAD OPERATIONS, MULTILANE, > 15' AWAY
701301-04	LANE CLOSURE, 2L, 2W, SHORT TIME OPERATIONS
701306-04	LANE CLOSURE, 2L, 2W, SLOW MOVING OPERATIONS DAY ONLY, FOR SPEEDS ≥ 45 MPH
701311-03	LANE CLOSURE, 2L, 2W MOVING OPERATIONS-DAY ONLY
701502-08	URBAN LANE CLOSURE, 2L, 2W, WITH BIDIRECTIONAL LEFT TURN LANE
701701-10	URBAN LANE CLOSURE, MULTILANE INTERSECTION
701901-07	TRAFFIC CONTROL DEVICES
704001-08	TEMPORARY CONCRETE BARRIER

GENERAL NOTES

BEFORE STARTING ANY EXCAVATION, THE CONTRACTOR SHALL CALL J.U.L.I.E. AT (800) 892-0123 OR 811 FOR FIELD LOCATIONS OF BURIED ELECTRIC, TELEPHONE AND GAS UTILITIES. 48 HOUR NOTIFICATION IS REQUIRED.

THE CONTRACTOR SHALL COORDINATE CONSTRUCTION ACTIVITIES WITH UTILITY COMPANIES, AND THE VILLAGE OF LIBERTYVILLE.

PLAN DIMENSIONS AND DETAILS RELATIVE TO EXISTING PLANS ARE SUBJECT TO NOMINAL CONSTRUCTION VARIATIONS. THE CONTRACTOR SHALL FIELD VERIFY EXISTING DIMENSIONS AND DETAILS AFFECTING NEW CONSTRUCTION AND MAKE NECESSARY APPROVED ADJUSTMENTS PRIOR TO CONSTRUCTION OR ORDERING OF MATERIALS. SUCH VARIATIONS SHALL NOT BE CAUSE FOR ADDITIONAL COMPENSATION FOR A CHANGE IN SCOPE OF THE WORK, HOWEVER, THE CONTRACTOR WILL BE PAID FOR THE QUANTITY ACTUALLY FURNISHED BASED AT THE UNIT PRICE BID FOR THE WORK.

THE CONTRACTOR WILL NOT BE ALLOWED TO SET UP A YARD OR FIELD OFFICE ON STATE PROPERTY WITHOUT WRITTEN PERMISSION FROM THE DEPARTMENT.

ALL DAMAGE TO EXISTING PAVEMENT MARKINGS OR RAISED REFLECTIVE PAVEMENT MARKERS OUTSIDE THE REMOVAL LINE SHOWN ON THE PLANS SHALL BE REPLACED AT NO ADDITIONAL COST TO THE DEPARTMENT.

THE CONTRACTOR SHALL CONTACT THE DISTRICT ONE TRAFFIC CONTROL SUPERVISOR AT (847)705-4470 A MINIMUM OF 72 HOURS IN ADVANCE OF BEGINNING WORK.

THE RESIDENT ENGINEER SHALL CONTACT WALTER CZARNY, IDOT'S AREA TRAFFIC FIELD ENGINEER VIA EMAIL AT WALTER.CZARNY@ILLINOIS.GOV A MINIMUM OF TWO (2) WEEKS PRIOR TO THE PLACEMENT OF PERMANENT PAVEMENT MARKINGS.

THESE PLANS HAVE BEEN PREPARED FROM NOTES RECEIVED FROM THE BUREAU OF MAINTENANCE.

THE CONTRACTOR SHALL BE REQUIRED TO PROVIDE ACCESS TO ABUTTING PROPERTY AT ALL TIMES DURING THE CONSTRUCTION OF THIS PROJECT.

DO NOT SCALE PLANS FOR CONSTRUCTION DIMENSIONS.

MODEL: Default
FILE NAME: d:\work\ORH\BID\INT\EG Illinois.gov\PM\DOT\Documents\ISIDOT Offices\District 1\Projects\128417\CA\Bids\Bids\Design\128417-shs-plan.dgn

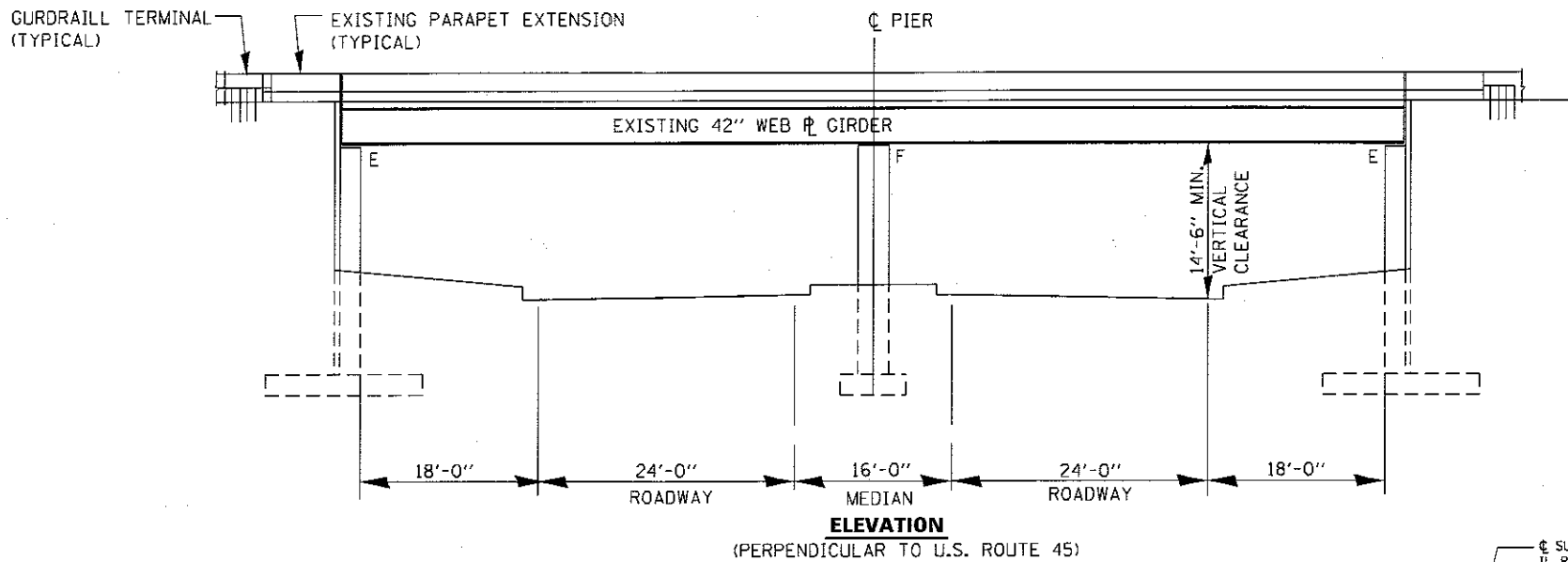
USER NAME = pyrzanowski	DESIGNED -	REVISED -
	DRAWN -	REVISED -
PLOT SCALE = 100.0000' / in.	CHECKED -	REVISED -
PLOT DATE = 2/8/2018	DATE -	REVISED -

**STATE OF ILLINOIS
DEPARTMENT OF TRANSPORTATION**

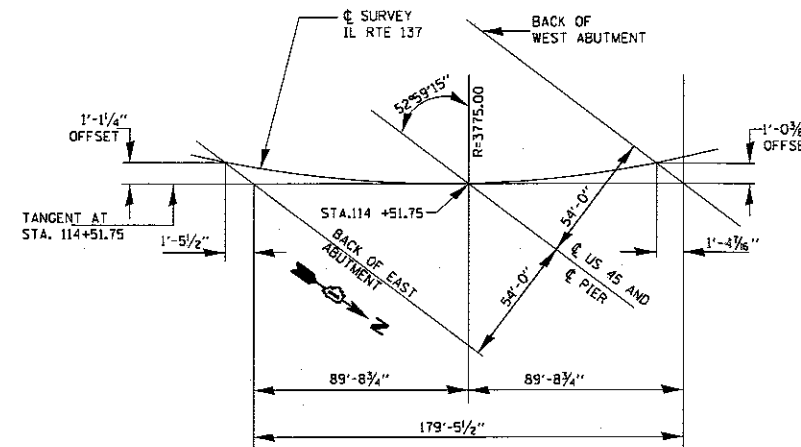
**INDEX OF SHEETS, STATE STANDARDS
AND GENERAL NOTES**

SCALE: SHEET OF SHEETS STA. TO STA.

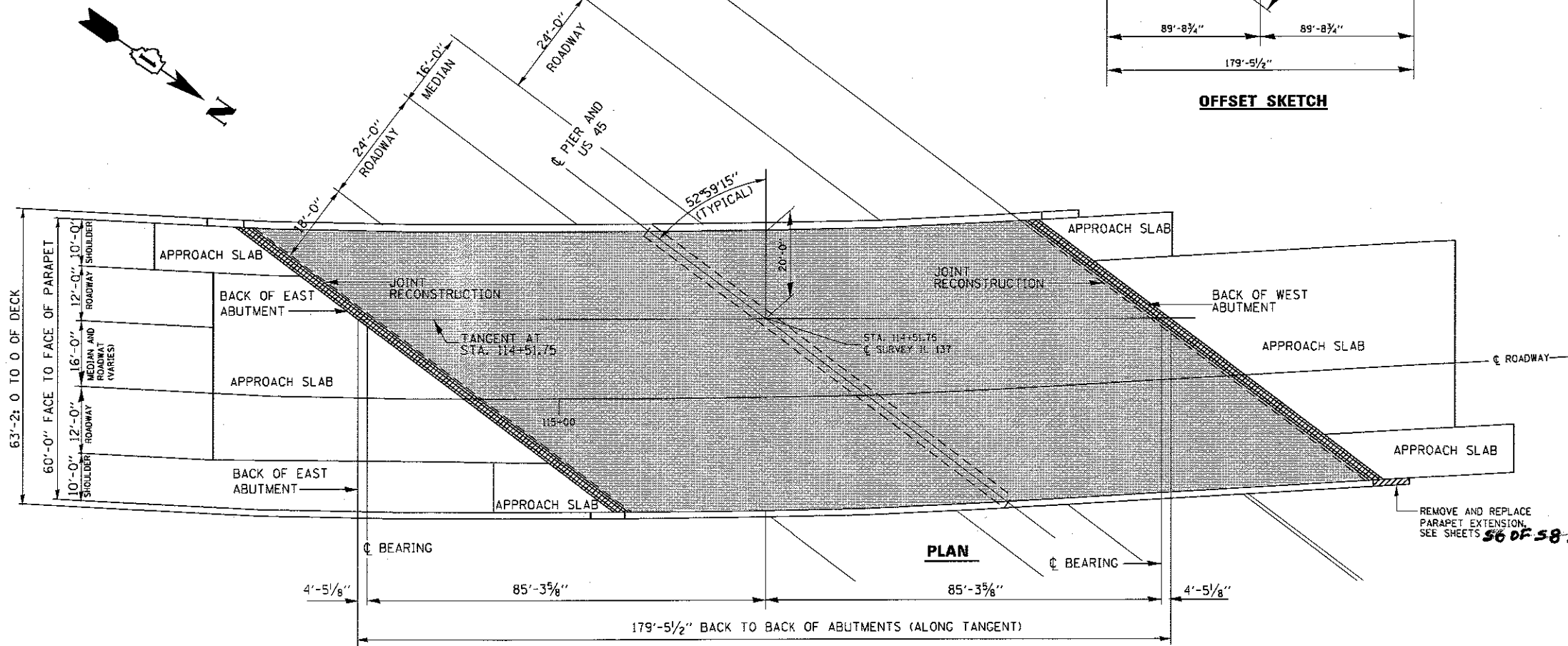
F.A. RTE.	SECTION	COUNTY	TOTAL SHEETS	SHEET NO.
344	46-15B-1-BR	LAKE	25	2
			CONTRACT NO. 62F34	
			ILLINOIS FED. AID PROJECT	



ELEVATION
(PERPENDICULAR TO U.S. ROUTE 45)



OFFSET SKETCH



PLAN

GENERAL NOTES:

PLAN DIMENSIONS AND DETAILS RELATIVE TO EXISTING PLANS ARE SUBJECT TO NOMINAL CONSTRUCTION VARIATIONS. THE CONTRACTOR SHALL FIELD VERIFY EXISTING DIMENSIONS AND DETAILS AFFECTING NEW CONSTRUCTION AND MAKE NECESSARY APPROVED ADJUSTMENT PRIOR TO CONSTRUCTION OR ORDERING OF MATERIALS. SUCH VARIATIONS SHALL NOT BE CAUSE FOR ADDITIONAL COMPENSATION FOR A CHANGE IN SCOPE OF THE WORK. HOWEVER, THE CONTRACTOR WILL BE PAID FOR THE QUANTITY ACTUALLY FURNISHED BASED AT THE UNIT PRICE BID FOR THE WORK.

EXISTING REINFORCEMENT BARS EXTENDING INTO THE REMOVAL AREA SHALL BE CLEANED, STRAIGHTENED AND INCORPORATED INTO THE NEW CONSTRUCTION. ANY REINFORCEMENT BARS THAT ARE DAMAGED DURING CONCRETE REMOVAL SHALL BE REPLACED WITH AN APPROVED BAR SPLICER OR ANCHORAGE SYSTEM. COST INCLUDED WITH CONCRETE REMOVAL.

JOINT OPENINGS SHALL BE ADJUSTED ACCORDING TO ARTICLE 520.04 OF THE STANDARD SPECIFICATIONS. WHEN THE DECK IS POURED AT AN AMBIENT TEMPERATURE OTHER THAN 50° F.

PRIOR TO POURING THE NEW CONCRETE DECK, ALL HEAVY OR LOOSE RUST, LOOSE MILL SCALE, AND OTHER LOOSE OR POTENTIALLY DETRIMENTAL FOREIGN MATERIAL SHALL BE REMOVED FROM THE SURFACES IN CONTACT WITH CONCRETE. TIGHTLY ADHERED PAINT MAY REMAIN UNLESS OTHERWISE NOTED. REMOVAL SHALL BE ACCOMPLISHED BY METHODS THAT WILL NOT DAMAGE THE STEEL AND THE COST WILL BE INCLUDED IN THE PAY ITEM COVERING REMOVAL OF THE EXISTING CONCRETE.

ALL STRUCTURAL STEEL SHALL CONFORM TO AASHTO CLASSIFICATION M-270 Gr. 36, UNLESS OTHERWISE NOTED.

REINFORCEMENT BARS DESIGNATED (E) SHALL BE EPOXY COATED.

THE DECK SURFACE SHALL HAVE ITS FINAL FINISH TINED ACCORDING TO ARTICLE 420.09(6)(1) OF THE STANDARD SPECIFICATIONS. COST INCLUDED WITH CONCRETE SUPERSTRUCTURES.

AREAS OF DECK REPAIRS SHOWN ARE ESTIMATED. THE ENGINEER SHALL SHOW ACTUAL LOCATIONS OF DECK REPAIRS ON AS-BUILT PLANS.

DO NOT SCALE DIMENSIONS.



David Carl Puzey 3/19/18 Expires 1/30/18

LEGEND:

- PREFORMED JOINT STRIP SEAL
- CONCRETE BRIDGE DECK SCARIFICATION 3/8"
- BRIDGE DECK THIN POLYMER OVERLAY 3/8"

TOTAL BILL OF MATERIALS

ITEM	UNIT	QUANTITY
REINFORCEMENT BARS (EPOXY COATED)	POUND	4004
CONCRETE SUPERSTRUCTURE	CU. YD.	26
CONCRETE REMOVAL	CU. YD.	26
BAR SPLICERS	EACH	24
APPROACH SLAB REPAIR (FULL DEPTH)	SQ. YD.	21
PREFORMED JOINT STRIP SEAL	FOOT	204
CONCRETE BRIDGE DECK SCARIFICATION 3/8"	SQ. YD.	1130
BRIDGE DECK THIN POLYMER OVERLAY 3/8"	SQ. YD.	1130
BRIDGE DECK CONCRETE SEALER	SQ. FT.	1445

BILL OF MATERIALS

ITEM	UNIT	QUANTITY
PREFORMED JOINT STRIP SEAL	FOOT	204

USER NAME =	DESIGNED - MVT	REVISED -
	DRAWN - MVT	REVISED -
PLOT SCALE =	CHECKED - AAD	REVISED -
PLOT DATE =	DATE	REVISED -

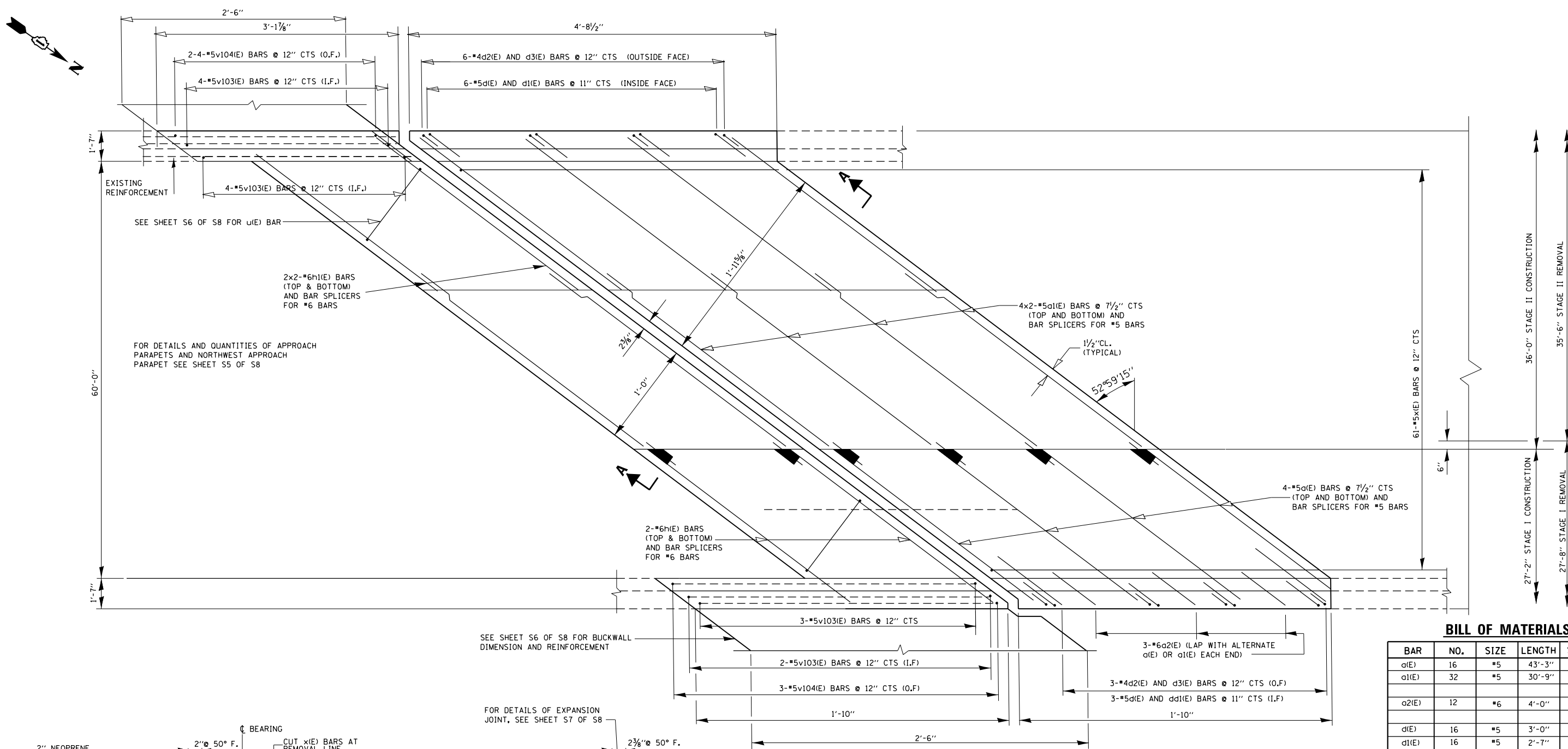
STATE OF ILLINOIS
DEPARTMENT OF TRANSPORTATION

137 (BUCKLEY ROAD) OVER US 45 (LAKE STREET)
PLAN AND ELEVATION
S.N. 049-0170

F.A.P. RTE. NO. 344	SECTION 46-15B-1-BR	COUNTY LAKE	TOTAL SHEETS 25	SHEET NO. 5
CONTRACT NO. 62F34			ILLINOIS FED. AID PROJECT	

SCALE: SHEET 51 OF 58 SHEETS STA. TO STA.

FILE NAME:



BILL OF MATERIALS

BAR	NO.	SIZE	LENGTH	SHAPE
α(E)	16	#5	43'-3"	—
α1(E)	32	#5	30'-9"	—
α2(E)	12	#6	4'-0"	—
α(E)	16	#5	3'-0"	J
α1(E)	16	#5	2'-7"	┘
α2(E)	16	#4	3'-0"	L
α3(E)	16	#4	3'-9"	C
h(E)	8	#6	43'-3"	—
h1(E)	16	#6	31'-0"	—
v103(E)	6	#5	2'-8"	J
v104(E)	6	#5	2'-6"	I
u(E)	122	#5	1'-11"	□
x(E)	122	#5	3'-7"	┘

MINIMUM BAR LAP

BAR	LAP
#5	3'-6"
#6	4'-0"

LEGEND:
 HATCHED AREA INDICATES CONCRETE REMOVAL

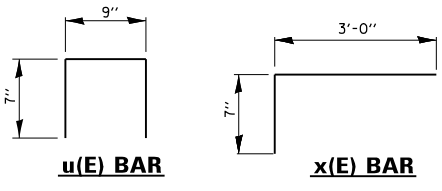
ITEM	UNIT	QUANTITY
REINFORCEMENT BARS (EPOXY COATED)	POUND	3948
CONCRETE REMOVAL	CU.YD.	25
CONCRETE SUPERSTRUCTURE	CU.YD.	25
BAR SPLICERS	EACH	24
PREFORMED JOINT STRIP SEAL	FOOT	204

BARS INDICATED THUS 4x2 -#5 ETC. INDICATES 4 LINES OF BARS WITH 2 LENGTHS PER LINE.

SECTION A-A (EXISTING)

SECTION A-A (PROPOSED)

PLAN EAST AND WEST ABUTMENT



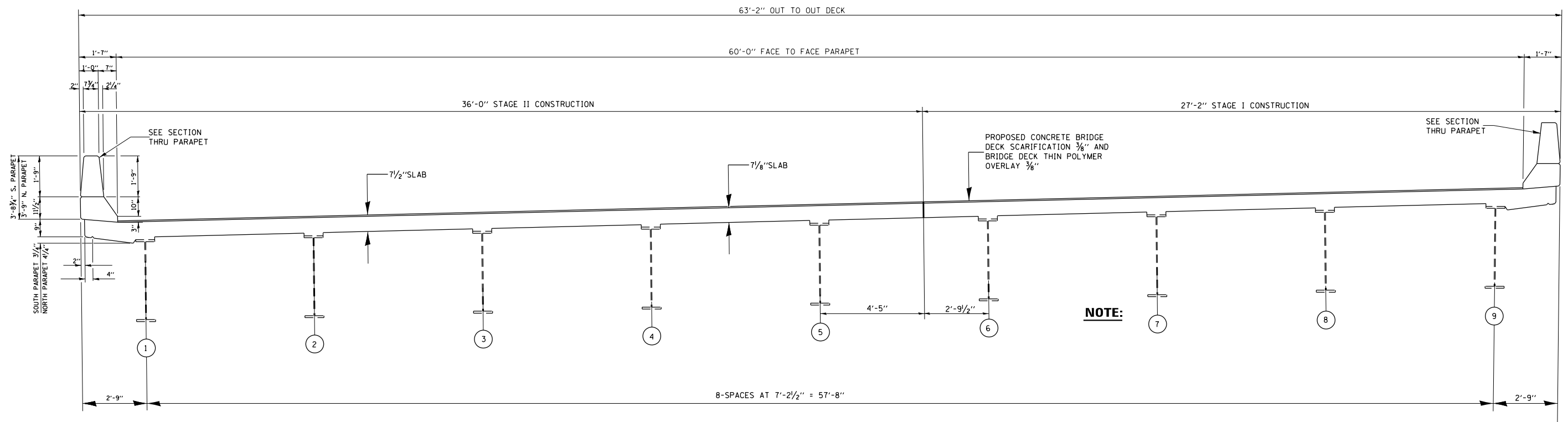
MODEL: Default
 FILE: \\nas01\pwwork\pwwork\Documents\BIDD\Projects\Struct\11\CAD\Drawings\049-0170.dwg
 PROJECT: Struct\11\CAD\Drawings\049-0170.dwg

USER NAME =	DESIGNED - MVT	REVISED -
DRAWN - MVT	REVISED -	
PLOT SCALE =	CHECKED - AAD	REVISED -
PLOT DATE =	DATE -	REVISED -

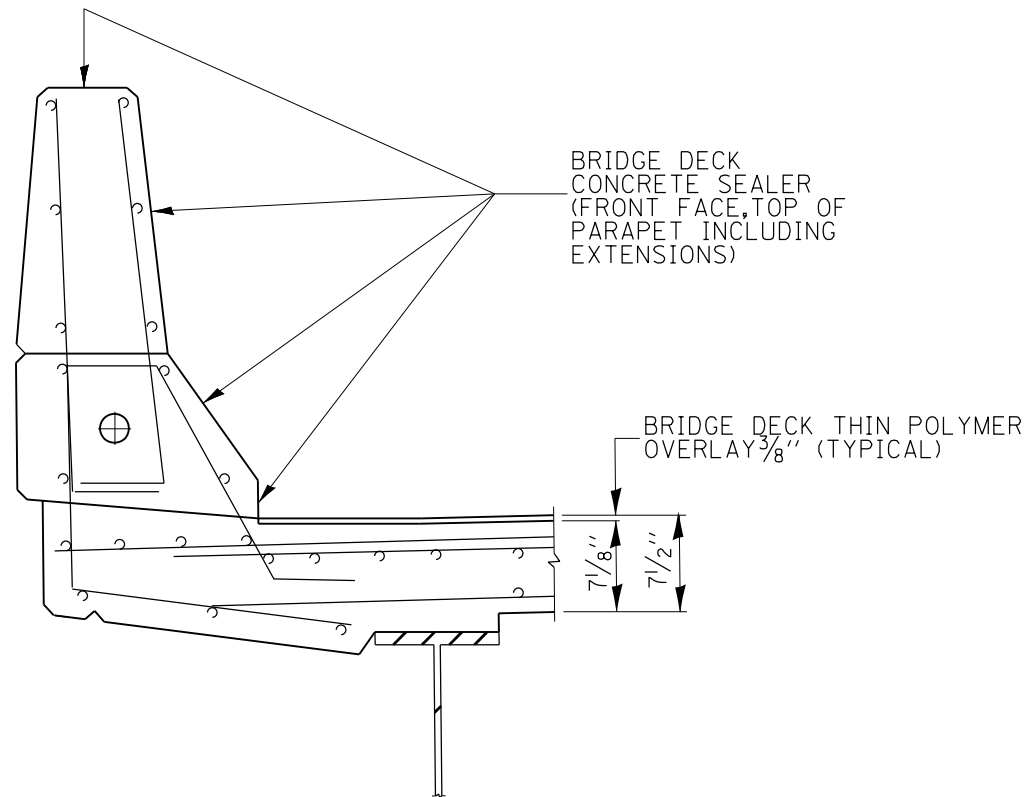
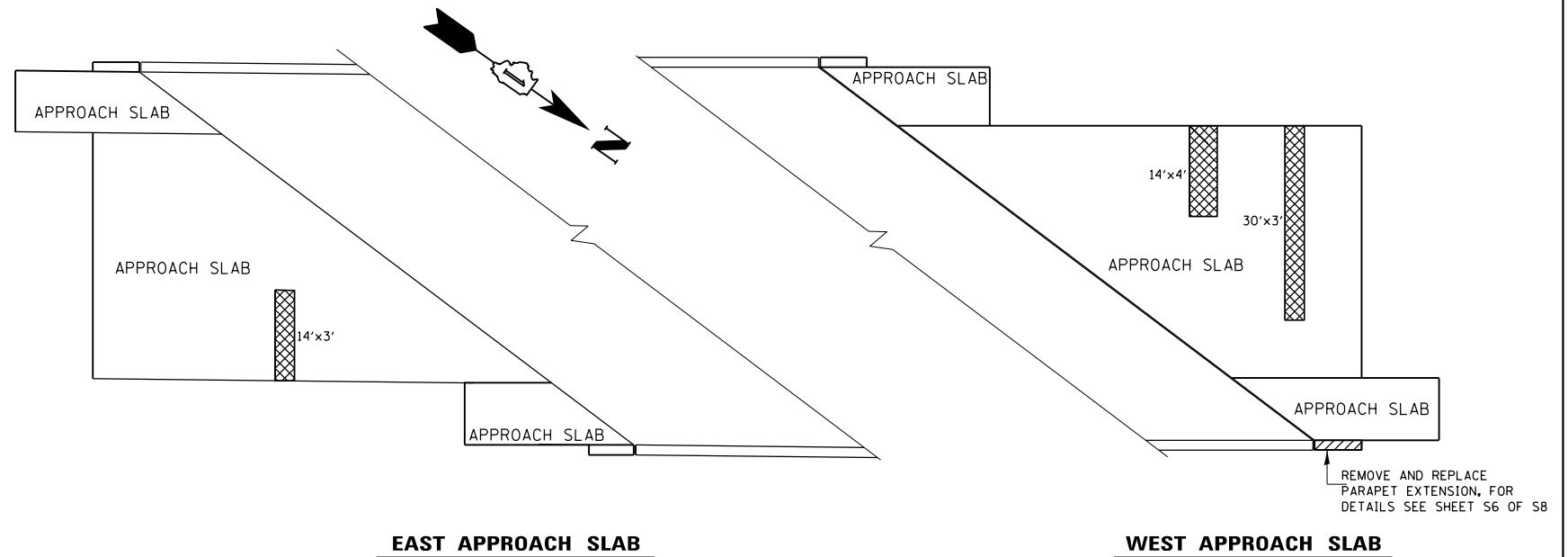
**STATE OF ILLINOIS
 DEPARTMENT OF TRANSPORTATION**

**137 (BUCKLEY ROAD) OVER US 45 (LAKE STREET)
 EXPANSION JOINT AT ABUTMENTS
 S.N. 049-0170**

F.A.P. RTE. 344	SECTION 46-15B-1-BR	COUNTY LAKE	TOTAL SHEETS 25	SHEET NO. 6
SCALE: SHEET 53 OF 58 SHEETS STA. TO STA.			CONTRACT NO. 62F34	
ILLINOIS FED. AID PROJECT				



**TYPICAL CROSS SECTION
(LOOKING WEST)**



**SECTION THRU PARAPET
(CONCRETE SEALER)**

LEGEND:

APPROACH SLAB REPAIR (FULL DEPTH)

BILL OF MATERIALS

ITEM	UNIT	QUANTITY
APPROACH SLAB REPAIR (FULL DEPTH)	SO.YD.	21

MODEL: Default
 FILE: \\nas01p01\proj\049-0170\Drawings\11\11-15B-1-BR\CrossSection\11-15B-1-BR-CrossSection.dwg
 PROJECT: 049-0170
 SHEET: 25 OF 27

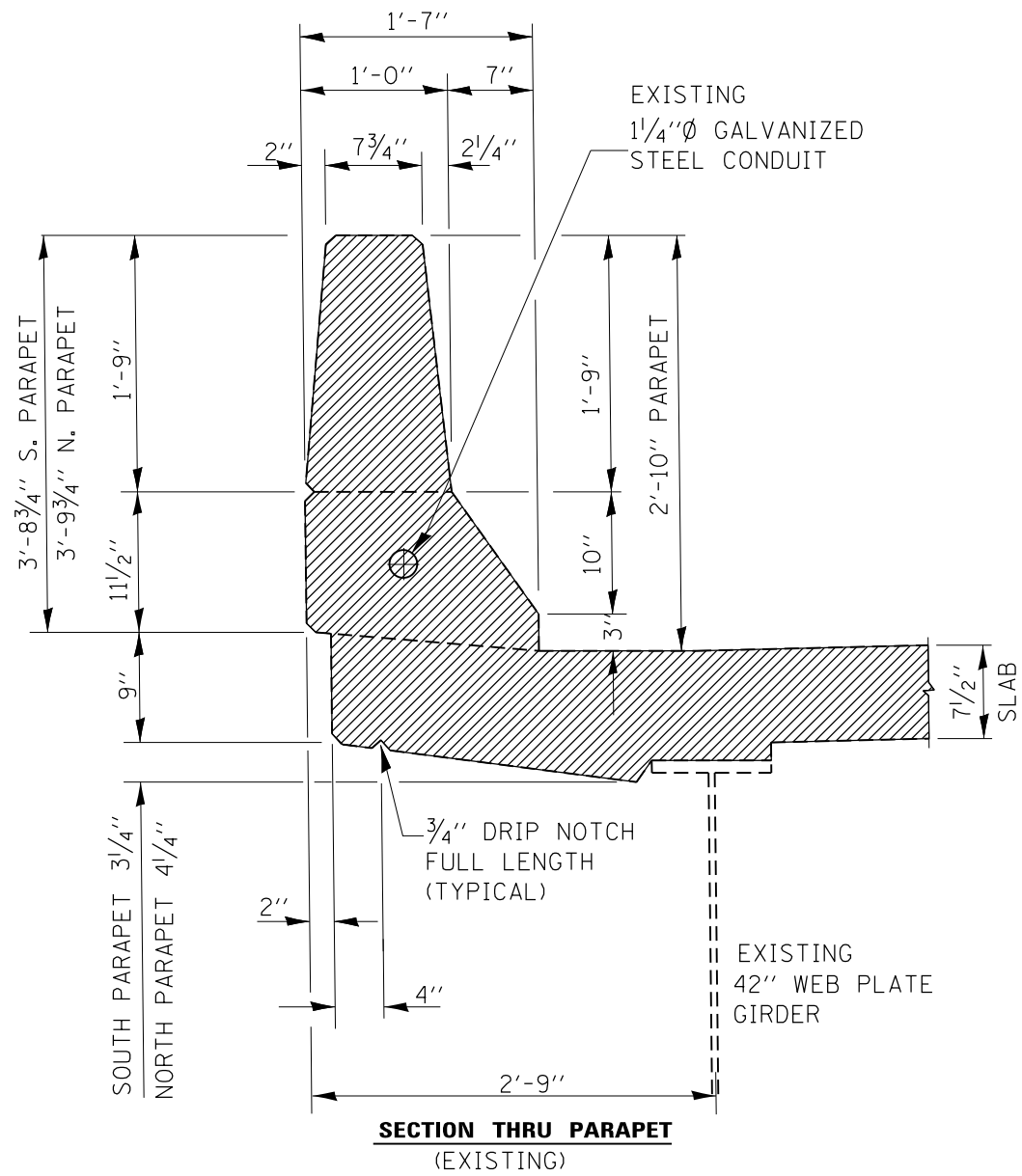
USER NAME =	DESIGNED - MVT	REVISED -
	DRAWN - MVT	REVISED -
PLOT SCALE =	CHECKED - AAD	REVISED -
PLOT DATE =	DATE -	REVISED -

**STATE OF ILLINOIS
DEPARTMENT OF TRANSPORTATION**

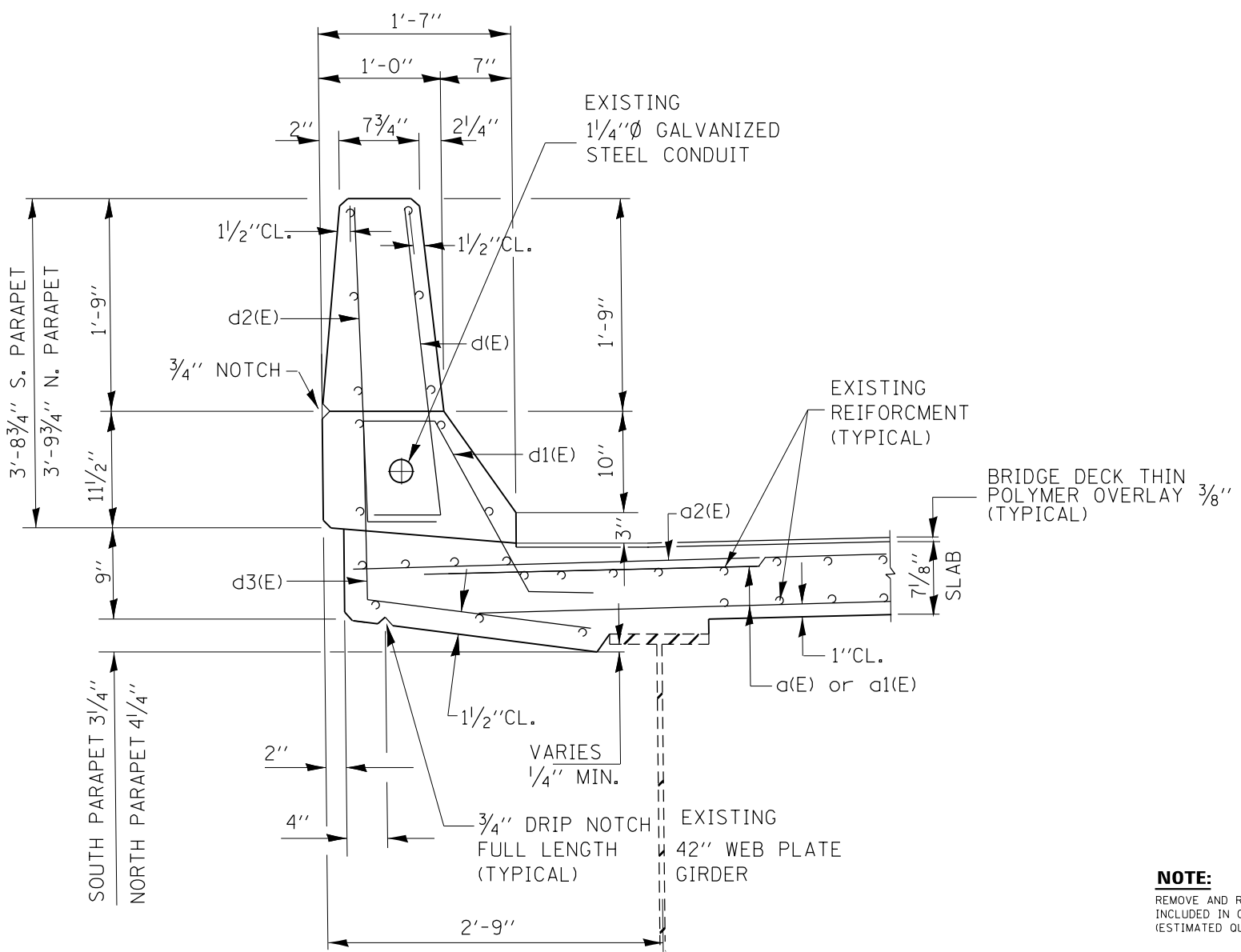
**137 (BUCKLEY ROAD) OVER US 45 (LAKE STREET)
CROSS SECTION AND DETAILS
S.N. 049-0170**

SCALE: SHEET 25 OF 27 SHEETS STA. TO STA.

F.A.P. RTE.	SECTION	COUNTY	TOTAL SHEETS	SHEET NO.
344	46-15B-1-BR	LAKE	25	7
CONTRACT NO. 62F34			ILLINOIS FED. AID PROJECT	

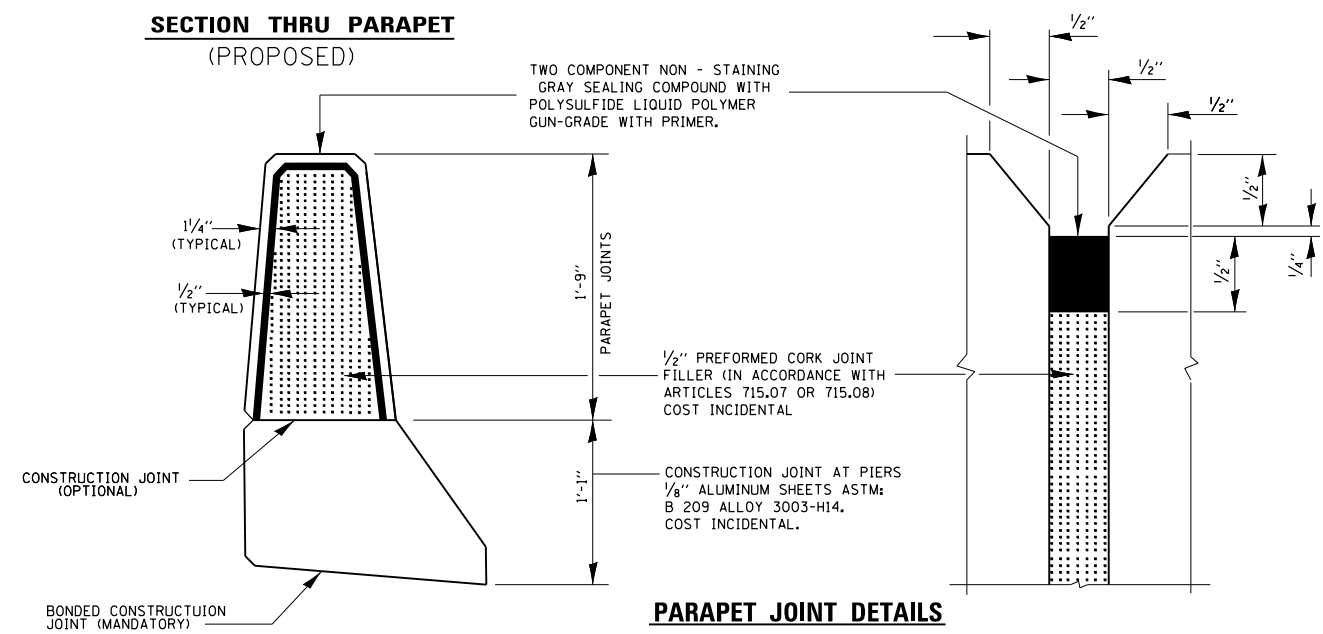
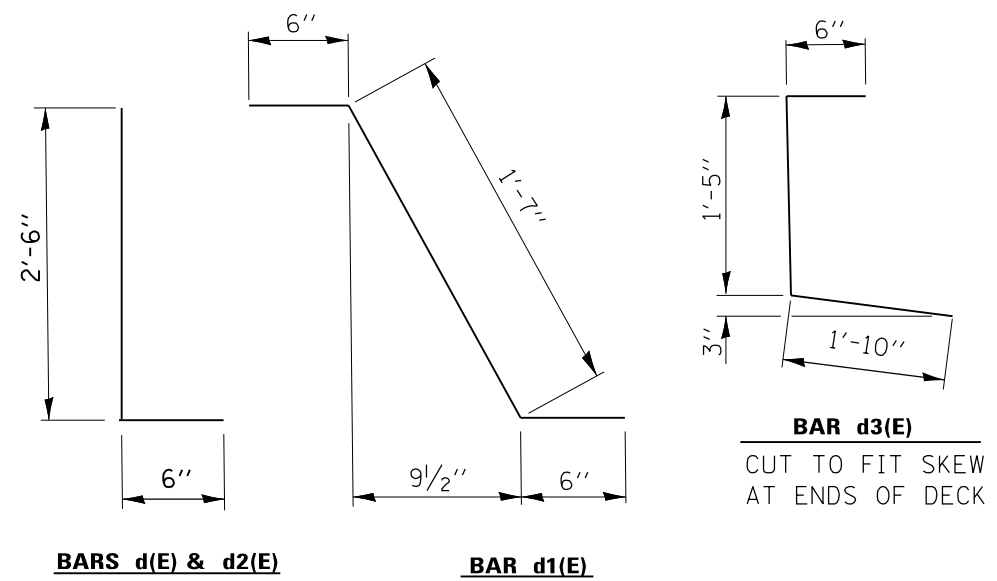


**SECTION THRU PARAPET
(EXISTING)**



**SECTION THRU PARAPET
(PROPOSED)**

NOTE:
REMOVE AND REPLACE EXISTING SEALING COMPOUND, COST INCLUDED IN CONCRETE SUPERSTRUCTURE.
(ESTIMATED QUANTITY: 99 FT)



MODEL: Default
FILE: Model: p:\ul\B&E\BID\NTEC\Illinois\poc\p\WIDOT\Documents\BID\Office\BID\refct_1\Project\Structure\1\CAD\data\Design\049.dwg

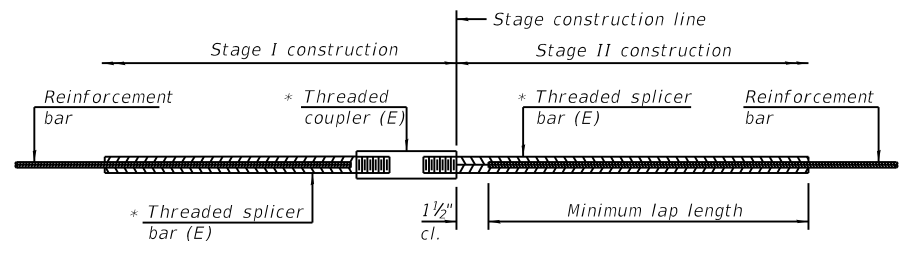
USER NAME =	DESIGNED -MVT	REVISED -
DRAWN -MVT	REVISED -	
PLOT SCALE =	CHECKED -AAD	REVISED -
PLOT DATE =	DATE -	REVISED -

**STATE OF ILLINOIS
DEPARTMENT OF TRANSPORTATION**

**137 (BUCKLEY ROAD) OVER US 45 (LAKE STREET)
SECTION AND DETAILS
S.N. 049-0170**

SCALE: SHEET S4 OF SHEETS STA. TO STA.

F.A.P. RTE.	SECTION	COUNTY	TOTAL SHEETS	SHEET NO.
344	46-15B-1-BR	LAKE	25	8
CONTRACT NO. 62F34				
ILLINOIS FED. AID PROJECT				

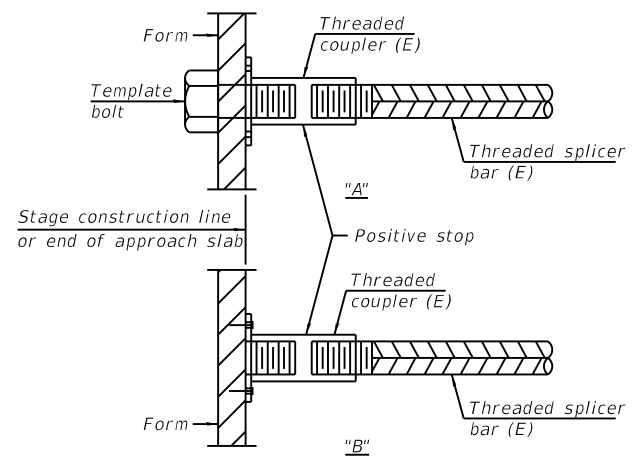


STANDARD BAR SPLICER ASSEMBLY

Threaded splicer bar length = min. lap length + 1 1/2" + thread length

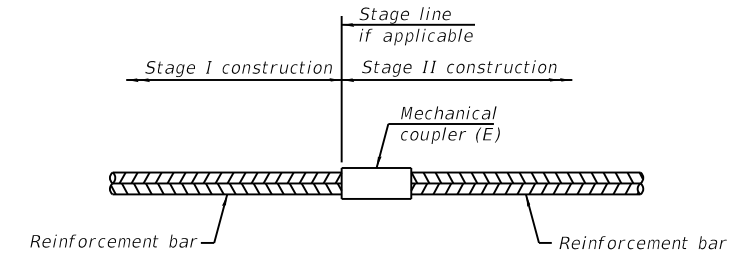
* Epoxy not required on Bar Splicer Assembly components used in conjunction with black bars.

Location	Bar size	No. assemblies required	Minimum lap length
East Abutment	#5	8	3'-6"
East Abutment	#6	4	4'-0"
West Abutment	#5	8	3'-6"
West Abutment	#6	4	4'-0"



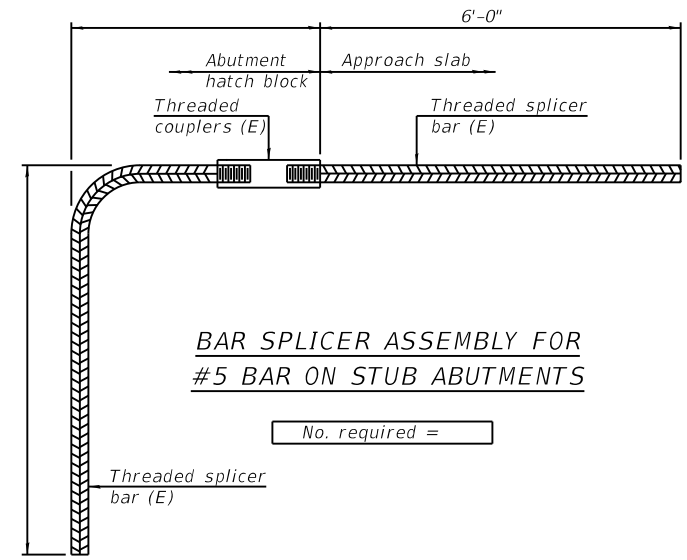
INSTALLATION AND SETTING METHODS

"A" : Set bar splicer assembly by means of a template bolt.
 "B" : Set bar splicer assembly by nailing to wood forms or cementing to steel forms.
 (E) : Indicates epoxy coating.



STANDARD MECHANICAL SPLICER

Location	Bar size	No. assemblies required



BAR SPLICER ASSEMBLY FOR #5 BAR ON STUB ABUTMENTS

No. required =

NOTES

Splicer bars shall be deformed with threaded ends and have a minimum 60 ksi yield strength.
 All reinforcement shall be lapped and tied to the splicer bars.
 Bar splicer assemblies shall be epoxy coated according to the requirements for reinforcement bars. See Section 508 of the Standard Specifications.
 See approved list of bar splicer assemblies and mechanical splicers for alternatives.

BSD-1 2-17-2017

MODEL: Default
 FILE: \\nas0101\B&E\BID\NTEC\Illinois\pov\PIV\DOT\Documents\BID\DOT_Offices\BID\refct_1\Projects\Structure\1\CAD\data\Bsd\p0409.dwg

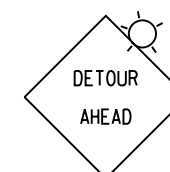
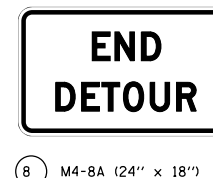
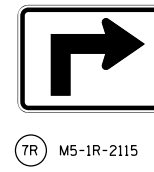
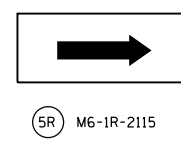
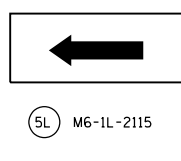
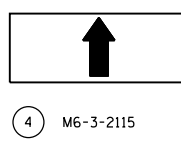
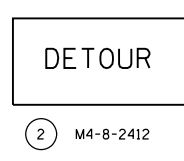
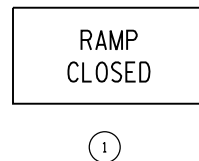
USER NAME =	DESIGNED -	REVISED -
DRAWN -	REVISIONS -	
PLOT SCALE =	CHECKED -	REVISED -
PLOT DATE =	DATE -	REVISED -

**STATE OF ILLINOIS
 DEPARTMENT OF TRANSPORTATION**

**137 (BUCKLEY ROAD) OVER US 45 (LAKE STREET)
 BAR SPLICER ASSEMBLY AND MECHANICAL SPLICER DETAILS
 S.N. 049-0170**

F.A.P. RTE.	SECTION	COUNTY	TOTAL SHEETS	SHEET NO.
344	46-15B-1-BR	LAKE	25	12
CONTRACT NO. 62F34				
ILLINOIS FED. AID PROJECT				

SCALE: SHEET 58 OF 58 SHEETS STA. TO STA.



1

2 M4-8-2412

3 M1-4.2-2424

4 M6-3-2115

5L M6-1L-2115

5R M6-1R-2115

6 M3-1-2412

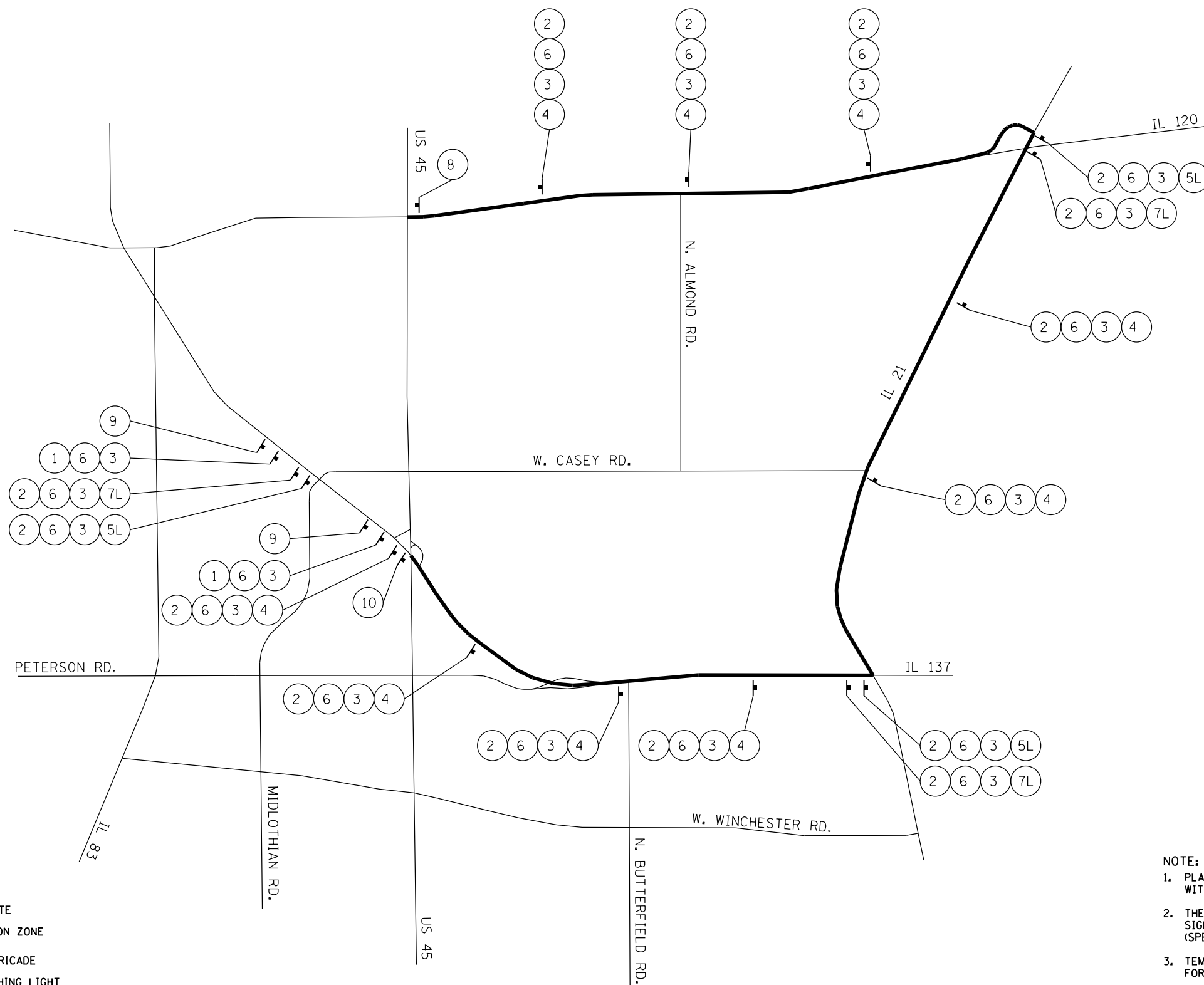
7R M5-1R-2115

7L M5-1L-2115

8 M4-8A (24" x 18")

9 W20-2 (48" x 48")

10 R3-2 (24" x 24")



- LEGEND:**
- DETOUR ROUTE
 - CONSTRUCTION ZONE
 - TYPE III BARRICADE
 - AMBER FLASHING LIGHT

NOTE:

1. PLACEMENT AND SPACING OF SIGNS AND BARRICADES SHALL BE IN ACCORDANCE WITH TC-21 (DETOUR SIGNING FOR CLOSING STATE HIGHWAYS).
2. THE COST OF SUPPLYING, ERECTING AND MAINTAINING BARRICADES, WARNING LIGHTS AND SIGNS SHALL BE INCLUDED IN THE CONTRACT COST OF TRAFFIC CONTROL AND PROTECTION (SPECIAL).
3. TEMPORARY INFORMATION SIGNING SHALL BE PLACED AT THE EAST AND WEST END OF IL 137 FOR THE DURATION OF THE PROJECT.

MODEL: Default
FILE NAME: p:\u0000\B&E\BID\ITEC\Illinois\gov\p\w\DOT\Documents\DOT_Offices\Director_1\Projects\128417\CADD\Drawings\128417-shr-pln.dgn

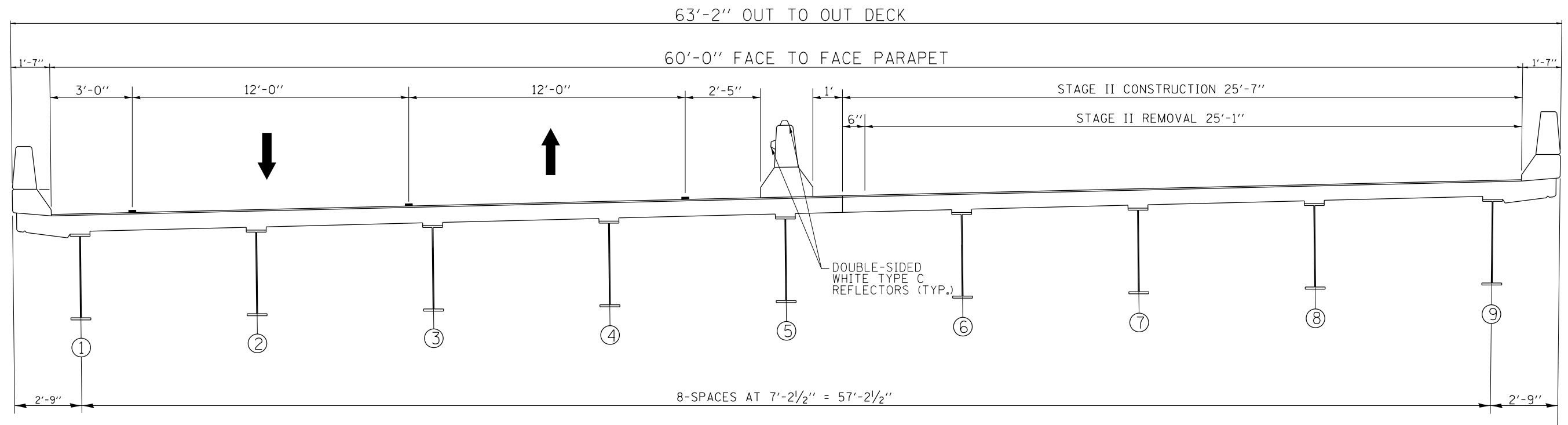
USER NAME = pyrzanowski	DESIGNED -	REVISED -
PLOT SCALE = 100,0000' / in.	DRAWN -	REVISED -
PLOT DATE = 1/29/2018	CHECKED -	REVISED -
	DATE -	REVISED -

**STATE OF ILLINOIS
DEPARTMENT OF TRANSPORTATION**

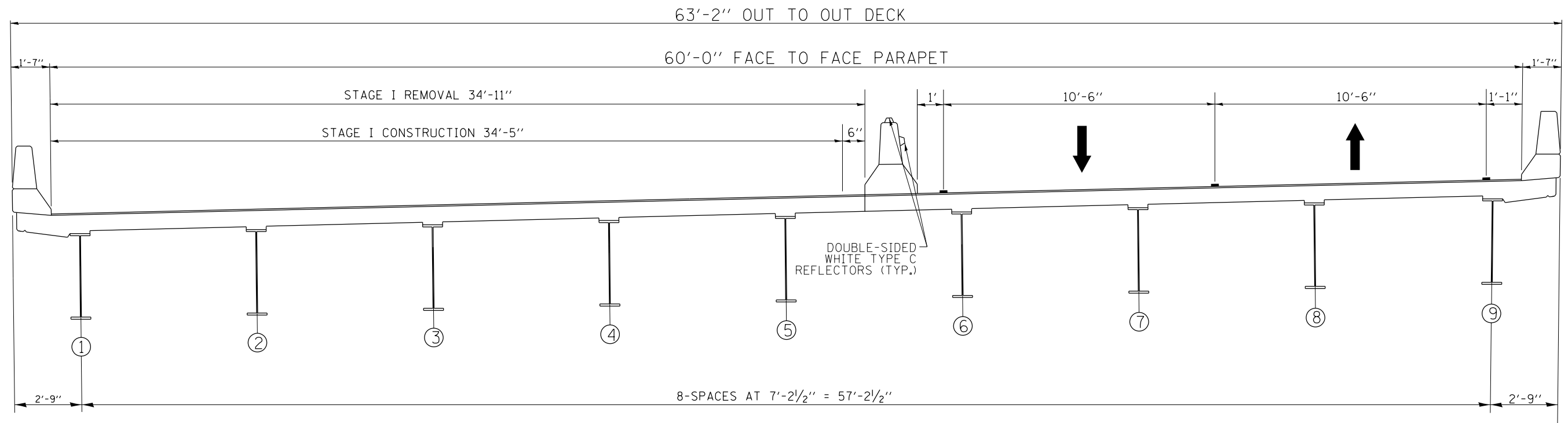
IL 137 DETOUR PLAN

SCALE: SHEET OF SHEETS STA. TO STA.

F.A.P. RTE.	SECTION	COUNTY	TOTAL SHEETS	SHEET NO.
344	46-15B-1-BR	LAKE	25	13
CONTRACT NO. 62F34				
ILLINOIS FED. AID PROJECT				

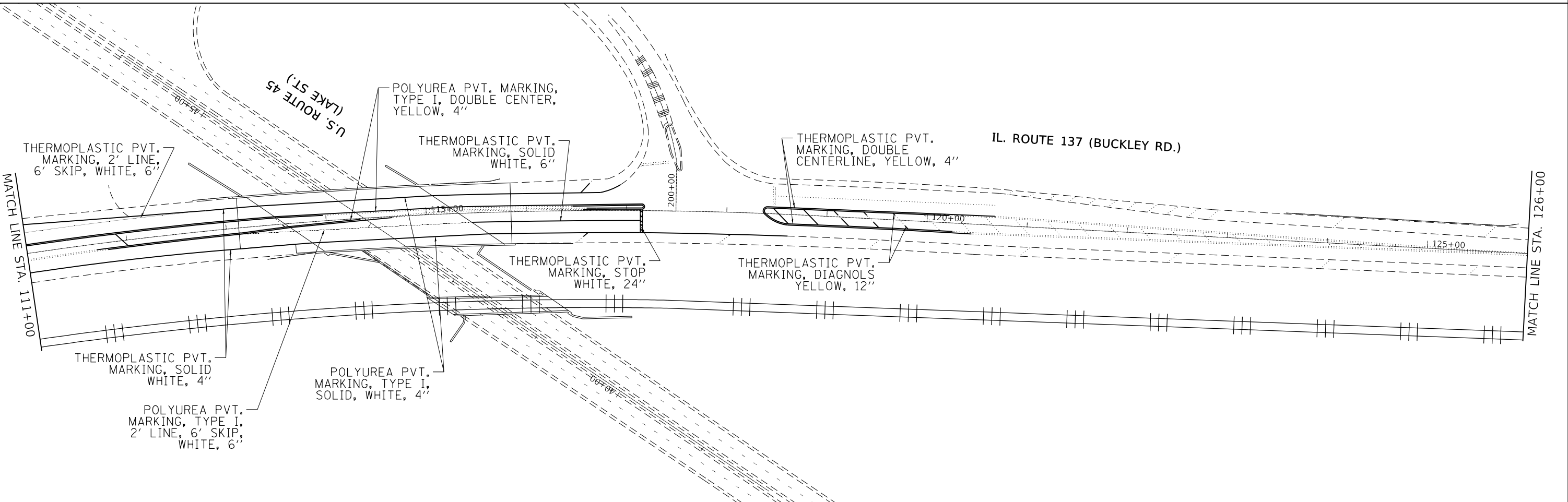
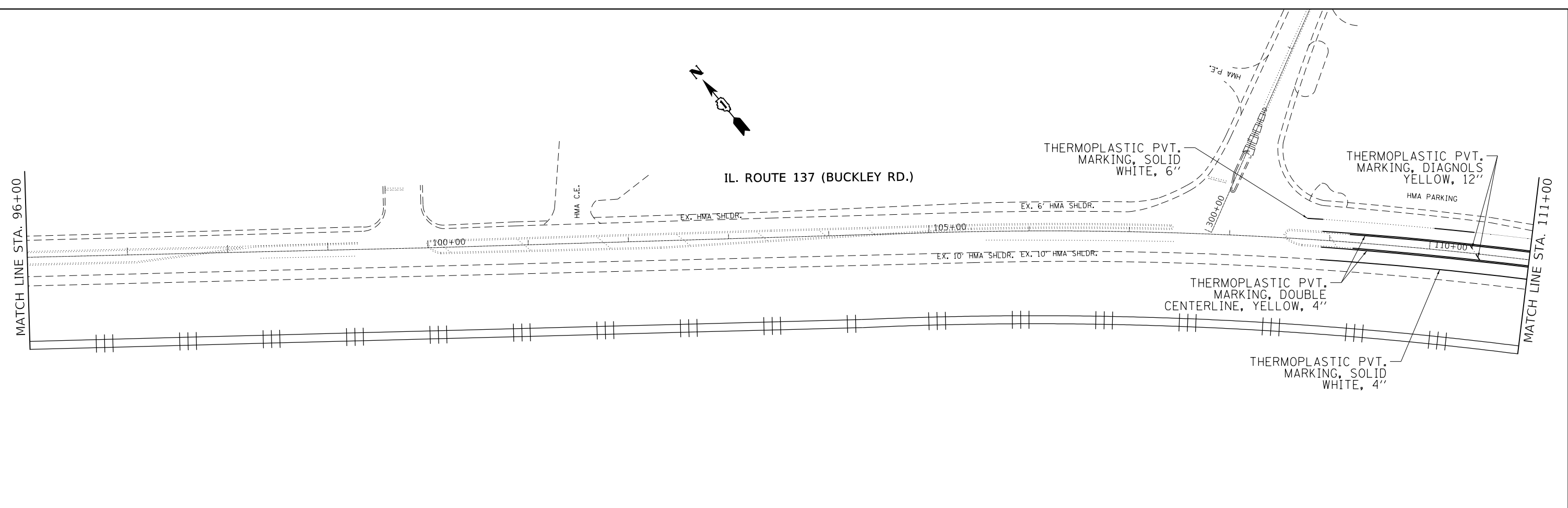
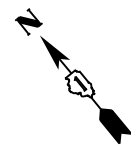


STAGE I CROSS SECTION
(LOOKING WEST)



STAGE II CROSS SECTION
(LOOKING WEST)

FILE NAME =	USER NAME = pyzzenowski	DESIGNED -	REVISED -	STATE OF ILLINOIS DEPARTMENT OF TRANSPORTATION	TRAFFIC CONTROL CROSS SECTIONS			F.A.P. RTE.	SECTION	COUNTY	TOTAL SHEETS	SHEET NO.
pw:\IL\084EBIDINTEG.illinois.gov\PWIDOT\Documents\DOT Offices\District 1\Projects\DI28417\Design\DI28417-sht-plen.dgn		CHECKED -	REVISED -		US ROUTE 45 (LAKE ST.) AT IL ROUTE 137 (BUCKLEY RD.) (SN 049-0170)			344	46-15B-1-BR	LAKE	25	14
Default	PLOT SCALE = 100.0000' / in.	DATE -	REVISED -		SCALE:	SHEET 1	OF 1	SHEETS	STA.	TO STA.	CONTRACT NO. 62F34	
	PLOT DATE = 1/24/2018				ILLINOIS FED. AID PROJECT							



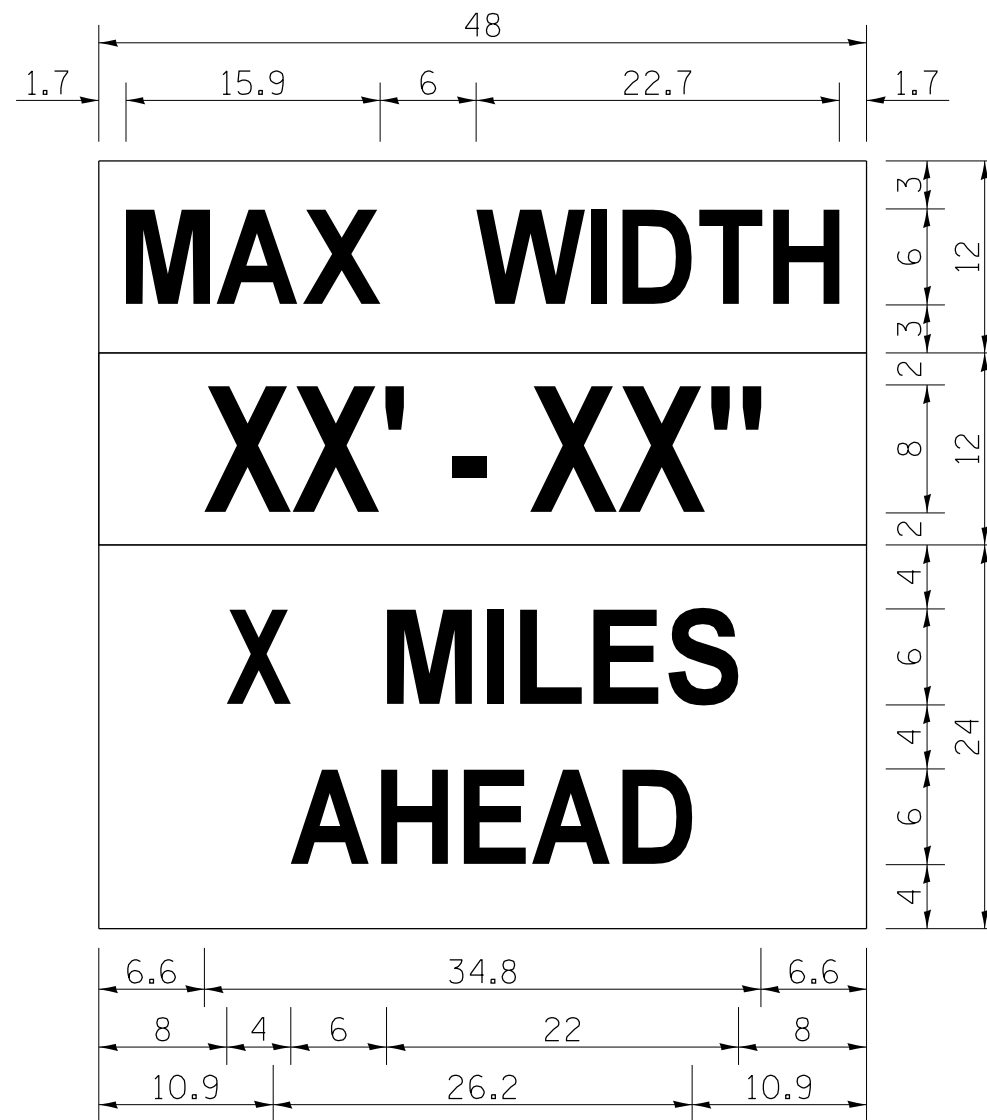
MODEL: Default
 FILE: \\mhc\p\ul\B&E\BID\NTEC\Illinois\pov\PW\DOT\Documents\BID\Office\BID\refct_1\proj\cs\128417\CADD\B&E\Design\128417-shr-pln.dgn

USER NAME = pyzranowski	DESIGNED -	REVISED -
	DRAWN -	REVISED -
PLOT SCALE = 100.0000' / in.	CHECKED -	REVISED -
PLOT DATE = 1/10/2018	DATE -	REVISED -

STATE OF ILLINOIS
DEPARTMENT OF TRANSPORTATION

FINAL PAVEMENT MARKING PLAN
US ROUTE 45 (LAKE ST.) AT IL ROUTE 137 (BUCKLEY RD.)
 SCALE: 1" = 50' SHEET OF SHEETS STA. TO STA.

F.A.P. RTE.	SECTION	COUNTY	TOTAL SHEETS	SHEET NO.
344	46-15B-1-BR	LAKE	25	19
CONTRACT NO. 62F34				
ILLINOIS FED. AID PROJECT				



W12-I103 (WIDTH IS 80)
 NO BORDER, BLACK ON WHITE:
 [MAX WIDTH] D:

NO BORDER, BLACK ON ORANGE:
 [XX' - XX''] D:

NO BORDER, BLACK ON WHITE:
 [X MILES] D: [AHEAD] D:

ALL DIMENSIONS ARE IN INCHES UNLESS
 OTHERWISE NOTED.

W12-I103

MODEL: Default
 FILE: \\nas01.cba.uillinois.gov\pww\DOT\Documents\DOT_Offices\Director\Projects\128417\CADD\data\Design\128417-shr-pln.dgn

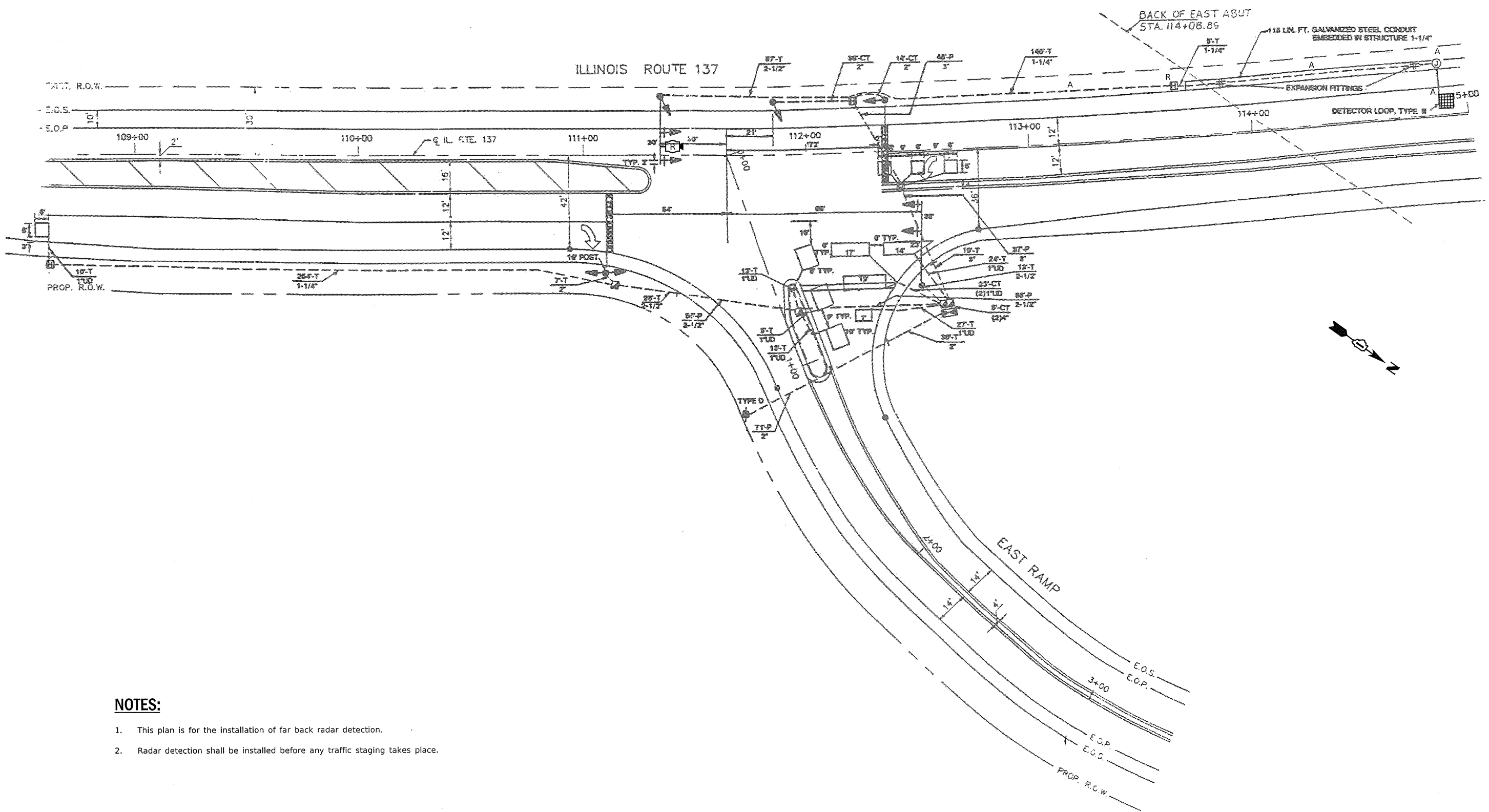
USER NAME = pyrzanowski	DESIGNED -	REVISED -
	DRAWN -	REVISED -
PLOT SCALE = 100.0000' / in.	CHECKED -	REVISED -
PLOT DATE = 1/10/2018	DATE -	REVISED -

STATE OF ILLINOIS
 DEPARTMENT OF TRANSPORTATION

MAXIMUM WIDTH SIGN DETAIL

SCALE: SHEET OF SHEETS STA. TO STA.

F.A.P. RTE.	SECTION	COUNTY	TOTAL SHEETS	SHEET NO.
344	46-15B-1-BR	LAKE	25	20
			CONTRACT NO. 62F34	
		ILLINOIS	FED. AID PROJECT	



NOTES:

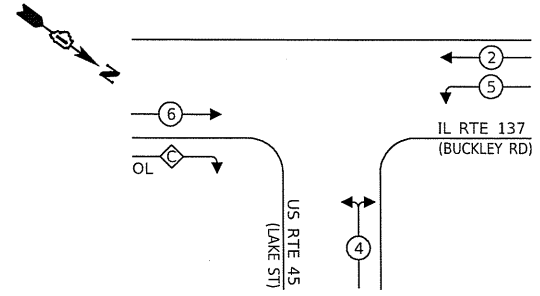
1. This plan is for the installation of far back radar detection.
2. Radar detection shall be installed before any traffic staging takes place.

MODEL: Default
 FILE NAME: p:\w\1084\ED\INTEG\Illinois\pov\PW\DOT\Documents\DOT_Offices\District_1\Projects\10128-117C\00Data\Trail\1012811715.dgn

TS 21660

	USER NAME = pociechal PLOT SCALE = 40,0000' / in. PLOT DATE = 2/7/2018	DESIGNED - DRAWN - CHECKED - DATE -	REVISED - REVISED - REVISED - REVISED -	STATE OF ILLINOIS DEPARTMENT OF TRANSPORTATION	TRAFFIC SIGNAL MODERNIZATION PLAN IL RTE 137 (BUCKLEY RD) AND US RTE 45 (LAKE ST)	F.A. RTE. 344 SECTION 46-15B-1-BR COUNTY LAKE TOTAL SHEETS 25 SHEET NO. 20B CONTRACT NO. 62F34	ILLINOIS FED. AID PROJECT	
				SCALE: SHEET OF SHEETS STA. TO STA.				

PHASE DESIGNATION DIAGRAM

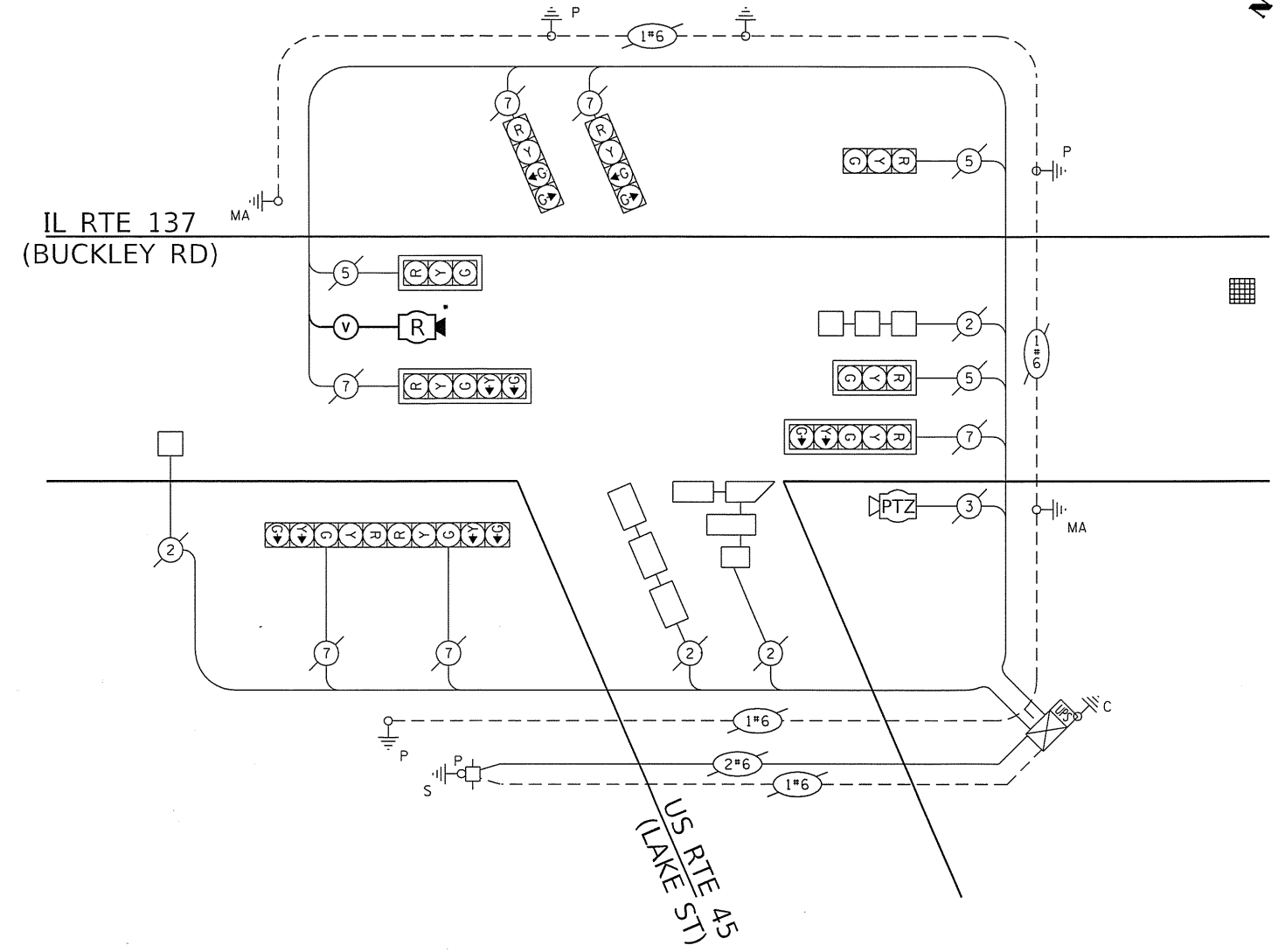


LEGEND:

- ← ⊙ → DUAL ENTRY PHASE
- ← ⊙ SINGLE ENTRY PHASE
- ← ⊙ → PEDESTRIAN PHASE
- ← ⊙ OL OVERLAP
- * NUMBER REFERS TO ASSOCIATED PHASE

RIGHT TURN OVERLAP PHASE DESIGNATION:

OVERLAP LETTER = PERMISSIVE PHASE + PROTECTED PHASE
 C = 6 + 4



CABLE PLAN
(NOT TO SCALE)

TRAFFIC SIGNAL ELECTRICAL SERVICE REQUIREMENTS

TYPE	NO. OF LAMPS	LED WATTAGE	% OPERATION	TOTAL WATTAGE
SIGNAL (RED)	9	17	50	76.5
(YELLOW)	9	25	25	56.3
(GREEN)	7	15	25	26.3
ARROW	12	12	10	14.4
PED. SIGNAL	-	25	100	-
CONTROLLER	1	100	100	100.0
UPS	1	25	100	25.0
VIDEO SYSTEM	1	150	100	150.0
RADAR SYSTEM	1	50	100	50.0
FLASHER LED	-	-	50	-
TOTAL =			498.5	

ENERGY COSTS TO:
 ILLINOIS DEPARTMENT OF TRANSPORTATION
 201 WEST CENTER COURT
 SCHAUMBURG, IL 60196-1096
 ENERGY SUPPLY: CONTACT: _____
 PHONE: _____
 COMPANY: _____
 ACCOUNT NUMBER: _____

SCHEDULE OF QUANTITIES

ITEM	ITEM DESCRIPTION	UNITS	TOTAL QTY.
85000200	MAINTENANCE OF EXISTING TRAFFIC SIGNAL INSTALLATION	EACH	1
89502200	MODIFY EXISTING CONTROLLER	EACH	1
89502380	REMOVE EXISTING HANDHOLE	EACH	1
X1400156	RADAR VEHICLE DETECTION SYSTEM, SINGLE APPROACH, FAR BACK	EACH	1
Z0073510	TEMPORARY TRAFFIC SIGNAL TIMING	EACH	1

* RADAR DETECTION SHALL BE INSTALLED BEFORE ANY TRAFFIC STAGING TAKES PLACE

TS 21660

MODEL: Debut
FILE NAME: P:\1108\EBID\INTG\Illinois.gpr\FM\DOT\Documents\DOT Office\Bridges\1108\DOT\Documents\DOT Office\Bridges\1108\DOT\Traffic\128117\1215.dgn

USER NAME = pocietal	DESIGNED -	REVISED -
PLOT SCALE = 40.0000' / in.	DRAWN -	REVISED -
PLOT DATE = 2/7/2018	CHECKED -	REVISED -
	DATE -	REVISED -

**STATE OF ILLINOIS
DEPARTMENT OF TRANSPORTATION**

**CABLE PLAN, PHASE DESIGNATION DIAGRAM,
AND SCHEDULE OF QUANTITIES
IL RTE 137 (BUCKLEY RD) AND US RTE 45 (LAKE ST)**

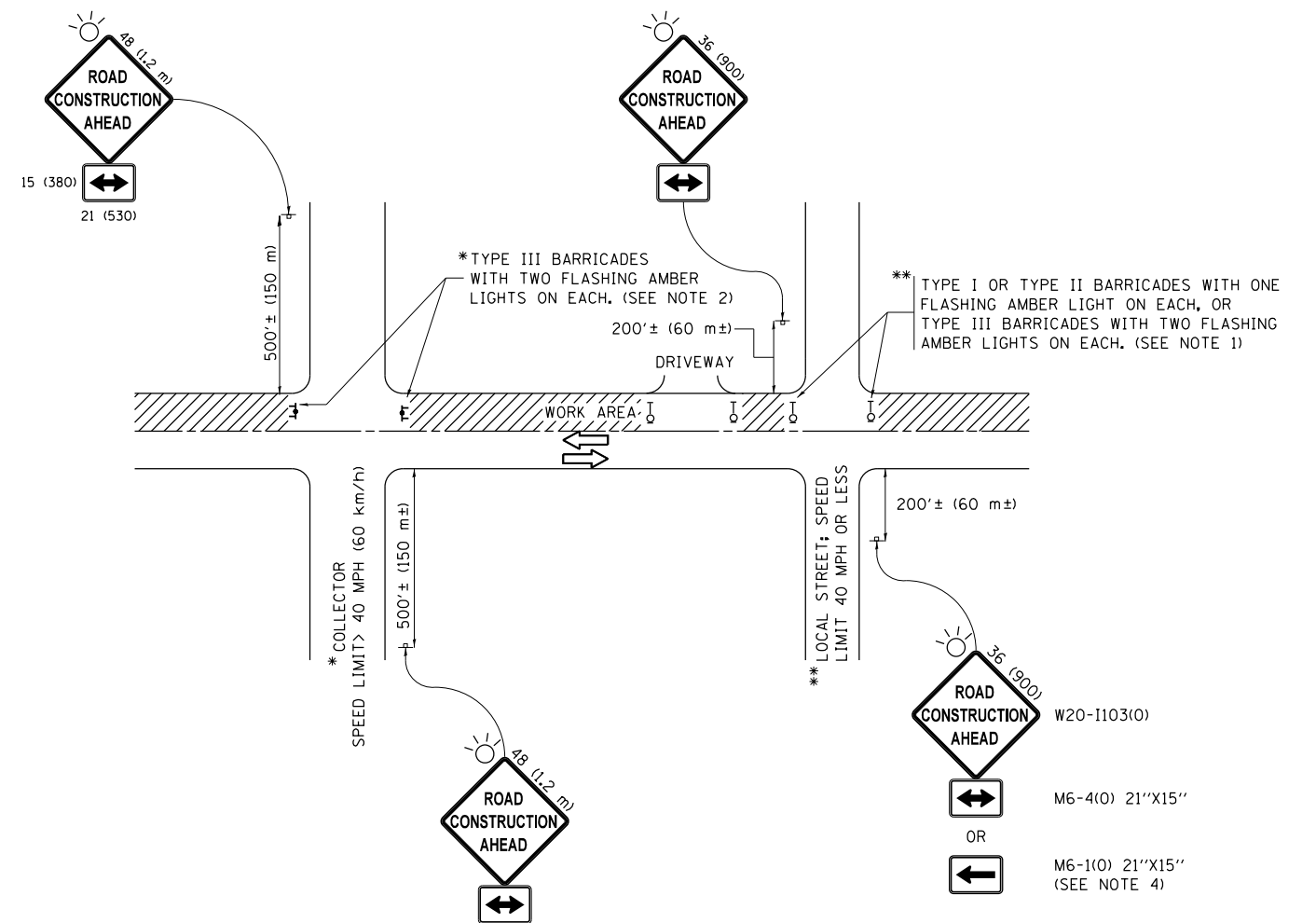
SCALE: SHEET OF SHEETS STA. TO STA.

F.A. RTE. 344	SECTION 46-15B-1-BR	COUNTY LAKE	TOTAL SHEETS 25	SHEET NO. 20C
ILLINOIS FED. AID PROJECT			CONTRACT NO. 62F34	

TRAFFIC SIGNAL LEGEND

(NOT TO SCALE)

ITEM	EXISTING	PROPOSED	ITEM	EXISTING	PROPOSED	ITEM	EXISTING	PROPOSED
CONTROLLER CABINET			HANDHOLE -SQUARE			SIGNAL HEAD -(P) PROGRAMMABLE SIGNAL HEAD		
COMMUNICATION CABINET			-ROUND			SIGNAL HEAD WITH BACKPLATE -(P) PROGRAMMABLE SIGNAL HEAD -(RB) RETROREFLECTIVE BACKPLATE		
MASTER CONTROLLER			HEAVY DUTY HANDHOLE -SQUARE			PEDESTRIAN SIGNAL HEAD AT RAILROAD INTERSECTIONS		
MASTER MASTER CONTROLLER			-ROUND			PEDESTRIAN SIGNAL HEAD WITH COUNTDOWN TIMER		
UNINTERRUPTABLE POWER SUPPLY			DOUBLE HANDHOLE			ILLUMINATED SIGN "NO LEFT TURN"/"NO RIGHT TURN"		
SERVICE INSTALLATION -(P) POLE MOUNTED			JUNCTION BOX			NUMBER OF CONDUCTORS, ELECTRIC CABLE NO. 14, UNLESS NOTED OTHERWISE. ALL DETECTOR LOOP CABLE TO BE SHIELDED		
SERVICE INSTALLATION -(G) GROUND MOUNTED -(GM) GROUND MOUNTED METERED			RAILROAD CANTILEVER MAST ARM			GROUND CABLE IN CONDUIT, NO. 6 SOLID COPPER (GREEN)		
TELEPHONE CONNECTION			RAILROAD FLASHING SIGNAL			ELECTRIC CABLE IN CONDUIT, TRACER NO. 14 1/C		
STEEL MAST ARM ASSEMBLY AND POLE			RAILROAD CROSSING GATE			COAXIAL CABLE		
ALUMINUM MAST ARM ASSEMBLY AND POLE			RAILROAD CROSSBUCK			VENDOR CABLE		
STEEL COMBINATION MAST ARM ASSEMBLY AND POLE WITH LUMINAIRE			RAILROAD CONTROLLER CABINET			COPPER INTERCONNECT CABLE, NO. 18, 3 PAIR TWISTED, SHIELDED		
SIGNAL POST -(BM) BARREL MOUNTED - TEMPORARY			UNDERGROUND CONDUIT (UC), GALVANIZED STEEL			FIBER OPTIC CABLE -NO. 62.5/125, MM12F -NO. 62.5/125, MM12F SM12F -NO. 62.5/125, MM12F SM24F		
WOOD POLE			TEMPORARY SPAN WIRE, TETHER WIRE, AND CABLE			GROUND ROD -(C) CONTROLLER -(M) MAST ARM -(P) POST -(S) SERVICE		
GUY WIRE			SYSTEM ITEM					
SIGNAL HEAD			INTERSECTION ITEM					
SIGNAL HEAD WITH BACKPLATE			REMOVE ITEM					
SIGNAL HEAD OPTICALLY PROGRAMMED			RELOCATE ITEM					
FLASHER INSTALLATION -(FS) SOLAR POWERED			ABANDON ITEM					
			CONTROLLER CABINET AND FOUNDATION TO BE REMOVED					
			MAST ARM POLE AND FOUNDATION TO BE REMOVED					
			SIGNAL POST AND FOUNDATION TO BE REMOVED					
PEDESTRIAN SIGNAL HEAD			DETECTOR LOOP, TYPE I					
PEDESTRIAN PUSH BUTTON -(APS) ACCESSIBLE PEDESTRIAN PUSH BUTTON			PREFORMED DETECTOR LOOP					
RADAR DETECTION SENSOR			SAMPLING (SYSTEM) DETECTOR					
VIDEO DETECTION CAMERA			INTERSECTION AND SAMPLING (SYSTEM) DETECTOR					
RADAR/VIDEO DETECTION ZONE			QUEUE AND SAMPLING (SYSTEM) DETECTOR					
PAN, TILT, ZOOM (PTZ) CAMERA			WIRELESS DETECTOR SENSOR					
EMERGENCY VEHICLE LIGHT DETECTOR			WIRELESS ACCESS POINT					
CONFIRMATION BEACON								
WIRELESS INTERCONNECT								
WIRELESS INTERCONNECT RADIO REPEATER								



NOTES:

1. SIDE ROAD WITH A SPEED LIMIT OF 40 MPH (60 km/h) OR LESS AS SHOWN ON THE DRAWING AND AS DIRECTED BY THE ENGINEER:
 - a) ONE "ROAD CONSTRUCTION AHEAD" SIGN 36 x 36 (900x900) WITH A FLASHER MOUNTED ON IT APPROXIMATELY 200' (60 m) IN ADVANCE OF THE MAIN ROUTE.
 - b) THE CLOSED PORTION OF THE MAIN ROUTE SHALL BE PROTECTED BY BLOCKING WITH TYPE I, TYPE II OR TYPE III BARRICADES, 1/3 OF THE CROSS SECTION OF THE CLOSED PORTION.
2. SIDE ROAD WITH A SPEED LIMIT GREATER THAN 40 MPH (60 km/h) AS SHOWN ON THE DRAWING AND AS DIRECTED BY THE ENGINEER:
 - a) ONE "ROAD CONSTRUCTION AHEAD" SIGN 48 x 48 (1.2 m x 1.2 m) WITH A FLASHER MOUNTED ON IT APPROXIMATELY 500' (150 m) IN ADVANCE OF THE MAIN ROUTE.
 - b) THE CLOSED PORTION OF THE MAIN ROUTE SHALL BE PROTECTED BY BLOCKING WITH TYPE III BARRICADES, 1/2 OF THE CROSS SECTION OF THE CLOSED PORTION.
3. CONES MAY BE SUBSTITUTED FOR BARRICADES OR DRUMS AT HALF THE SPACING DURING DAY OPERATIONS. CONES SHALL BE A MINIMUM OF 28 (710) IN HEIGHT.
4. WHEN THE SIDE ROAD LIES BETWEEN THE BEGINNING OF THE MAINLINE SIGNING AND THE WORK ZONE, A SINGLE HEADED ARROW (M6-1) SHALL BE USED IN LIEU OF THE DOUBLE HEADED ARROW (M6-4).
5. WHEN WORK IS BEING PERFORMED ON A SIDE ROAD OR DRIVEWAY, FOLLOW THE APPLICABLE STANDARD(S). THE DIRECTIONAL ARROW (M6-1 OR M6-4) SHALL BE COVERED OR REMOVED WHEN NO LONGER CONSISTENT WITH THE TRAFFIC CONTROL SET-UP.
6. ADVANCE WARNING SIGNS ARE TO BE OMITTED ON DRIVEWAYS UNLESS OTHERWISE SPECIFIED IN THE PLANS OR BY THE ENGINEER.
7. THE TRAFFIC CONTROL AND PROTECTION FOR SIDE ROADS, INTERSECTIONS, AND DRIVEWAYS SHALL BE INCLUDED IN THE COST OF SPECIFIED TRAFFIC CONTROL STANDARDS OR ITEMS.

All dimensions are in inches (millimeters) unless otherwise shown.

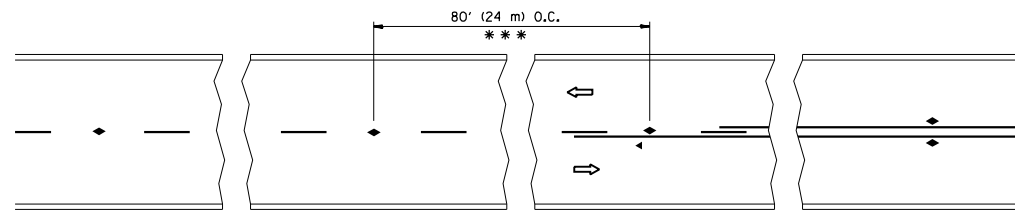
FILE NAME =	USER NAME = pyrzenowski	DESIGNED - L.H.A.	REVISED - A. HOUSEH 10-15-96
pw:\IL\084EBIDINTEG\illinois.gov\PIWIDOT\Documents\IDOT Offices\District 1\Projects\DI284\Drawings\Design\DistStd.dgn			REVISED - T. RAMMACHER 01-06-00
Default	PLOT SCALE = 100.0000' / in.	CHECKED -	REVISED - A. SCHUETZE 07-01-13
	PLOT DATE = 1/10/2018	DATE - 06-89	REVISED - A. SCHUETZE 09-15-16

**STATE OF ILLINOIS
DEPARTMENT OF TRANSPORTATION**

**TRAFFIC CONTROL AND PROTECTION FOR
SIDE ROADS, INTERSECTIONS, AND DRIVEWAYS**

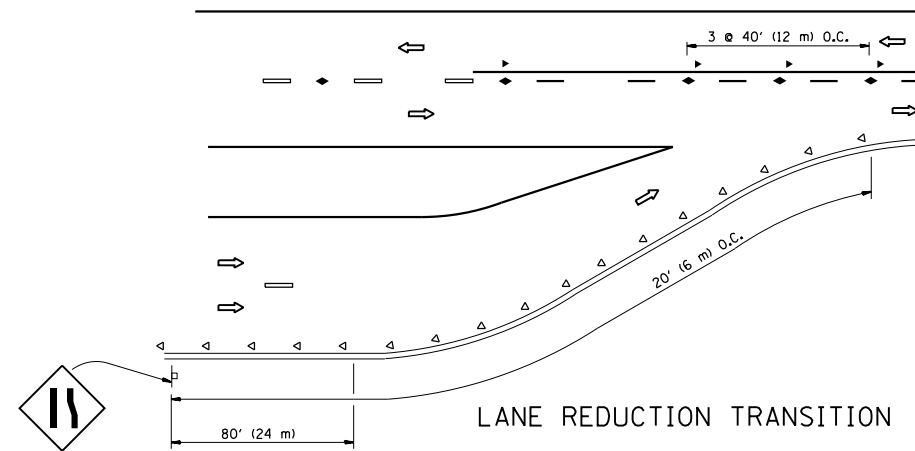
SCALE: NONE SHEET 1 OF 1 SHEETS STA. TO STA.

F.A.P. RTE.	SECTION	COUNTY	TOTAL SHEETS	SHEET NO.
344	46-15B-1-BR	LAKE	25	21
TC-10			CONTRACT NO. 62F34	
ILLINOIS FED. AID PROJECT				

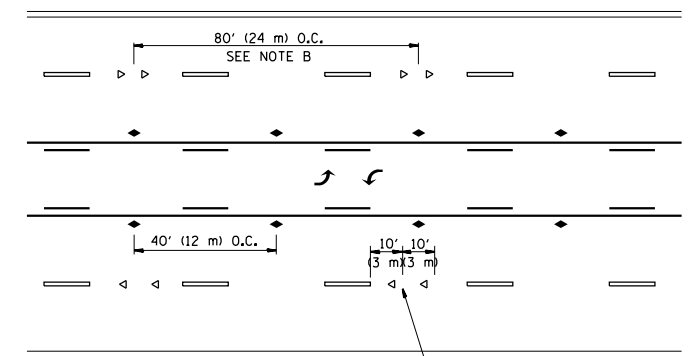


*** REDUCE TO 40' (12 m) O.C. ON CURVES WITH POSTED OR ADVISORY SPEED 45 M.P.H. (70 km/h) OR LESS.

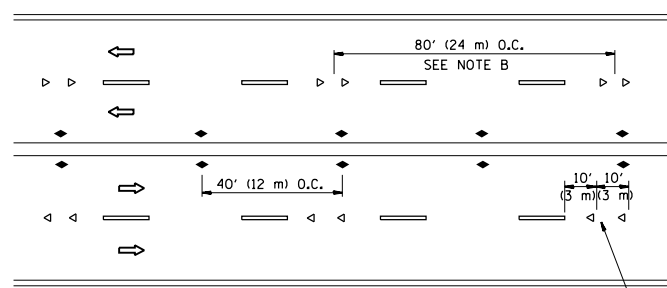
TWO-LANE/TWO-WAY



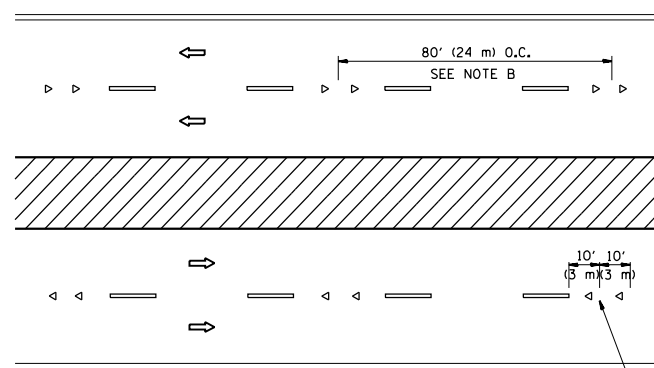
LANE REDUCTION TRANSITION



TWO-WAY LEFT TURN



MULTI-LANE/UNDIVIDED



MULTI-LANE/DIVIDED

GENERAL NOTES

1. MARKERS USED WITH DASHED LINES SHALL BE CENTERED IN THE GAP BETWEEN SEGMENTS.
2. MARKERS USED ADJACENT TO SOLID LINES SHALL BE OFFSET 2 TO 3 (50 TO 75) TOWARD TRAFFIC AS SHOWN.
3. MARKERS THROUGH TANGENTS LESS THAN 500' (150 m) IN LENGTH BETWEEN CURVES SHALL BE INSTALLED AT THE LESSER OF THE TWO CURVE SPACINGS.

SYMBOLS

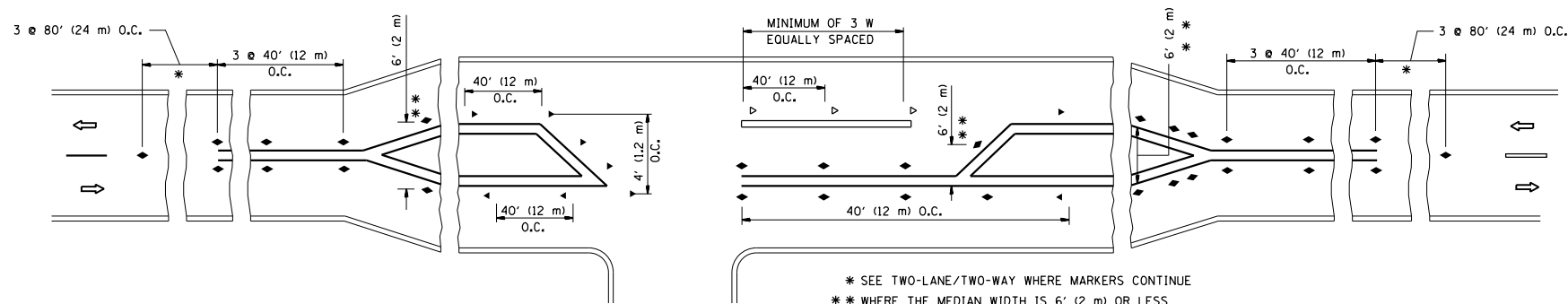
- YELLOW STRIPE
- WHITE STRIPE
- ◀ ONE-WAY AMBER MARKER
- ◁ ONE-WAY CRYSTAL MARKER (W/O)
- ◆ TWO-WAY AMBER MARKER

LANE MARKER NOTES

- A. USE DOUBLE LANE LINE MARKERS SPACED AS SHOWN.
- B. REDUCE TO 40' (12 m) O.C. ON CURVES WHERE ADVISORY SPEEDS ARE 10 M.P.H. (20 km/h) LOWER THAN POSTED SPEEDS.

DESIGN NOTES

1. DOUBLE LANE LINE MARKERS SHALL BE USED UNLESS SPECIFIED OTHERWISE.
2. EXCEPT AS SHOWN ON THE LANE REDUCTION TRANSITION AND FREEWAY EXIT RAMP DETAIL, MARKERS ARE NOT TO BE SPECIFIED ON RIGHT EDGE LINES.
3. THE EXACT MARKER LIMITS, SPACING, AND COLOR SHALL BE INCLUDED IN THE PLANS WHEN STANDARD SPECIFICATIONS ARE NOT BEING USED.
4. MARKERS SHOULD NOT BE USED ALONGSIDE CURBS EXCEPT FOR EXTREMELY SHORT SECTIONS OF CURBS WHERE NOT MORE THAN TWO MARKERS WOULD BE INVOLVED.



LEFT TURN

* SEE TWO-LANE/TWO-WAY WHERE MARKERS CONTINUE
 ** WHERE THE MEDIAN WIDTH IS 6' (2 m) OR LESS USE TWO-WAY MARKERS.

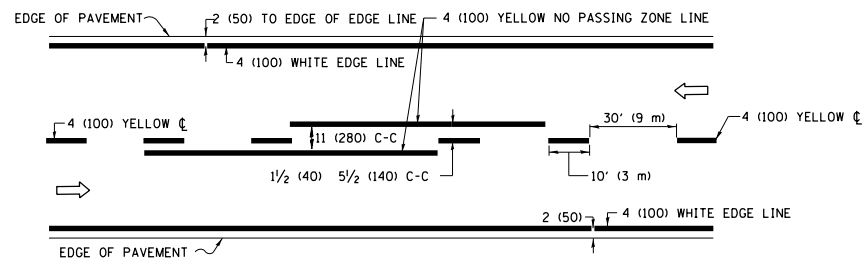
All dimensions are in inches (millimeters) unless otherwise shown.

FILE NAME =	USER NAME = pyrzenowski	DESIGNED -	REVISED - T. RAMMACHER 09-19-94
pw:\11\084EBIDINTEG\illinois.gov\PIWIDOT\Documents\IDOT Offices\District 1\Projects\DI284\Drawings\Design\DistStd.dgn		CHECKED -	REVISED - T. RAMMACHER 03-12-99
		DATE -	REVISED - T. RAMMACHER 01-06-00
			REVISED - C. JUCIUS 09-09-09

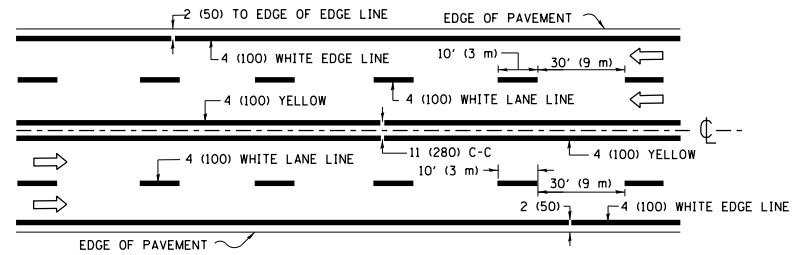
STATE OF ILLINOIS
 DEPARTMENT OF TRANSPORTATION

TYPICAL APPLICATIONS			
RAISED REFLECTIVE PAVEMENT MARKERS (SNOW-PLOW RESISTANT)			
SCALE: NONE	SHEET NO. 1 OF 1 SHEETS	STA.	TO STA.

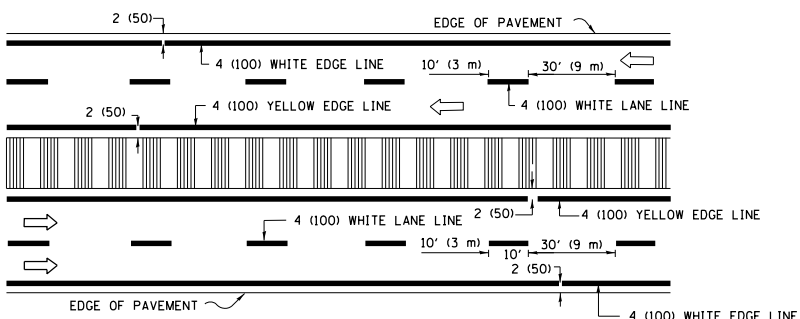
F.A.P. RTE.	SECTION	COUNTY	TOTAL SHEETS	SHEET NO.
344	46-15B-1-BR	LAKE	25	22
TC-11			CONTRACT NO. 62F34	
FED. ROAD DIST. NO. 1 ILLINOIS FED. AID PROJECT				



2-LANE ROADWAY

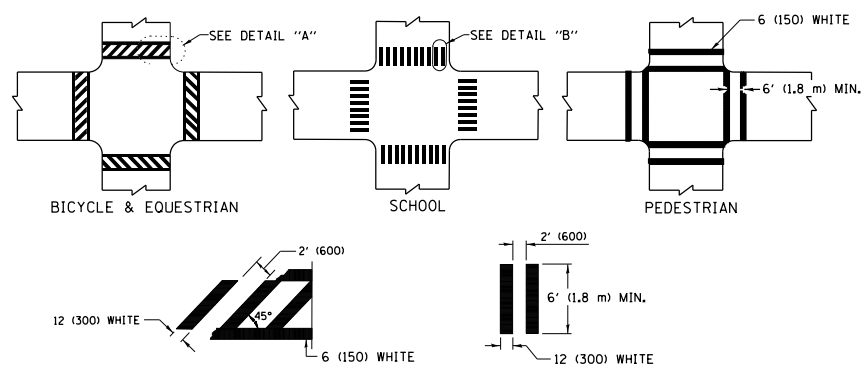


MULTI-LANE UNDIVIDED



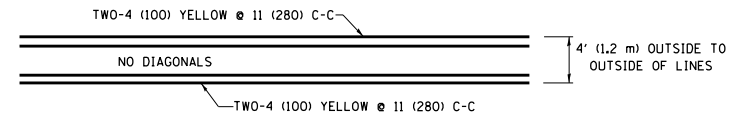
MULTI-LANE DIVIDED WITH MEDIAN

TYPICAL LANE AND EDGE LINE MARKING

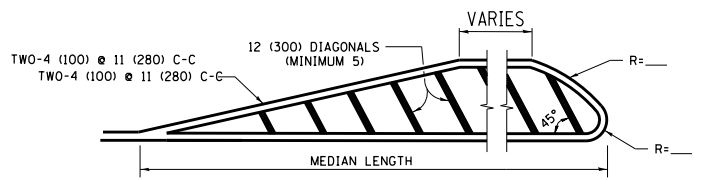


TYPICAL CROSSWALK MARKING

* MARKINGS SHALL BE INSTALLED PARALLEL TO THE CENTERLINE OF THE ROAD WHICH IT CROSSES

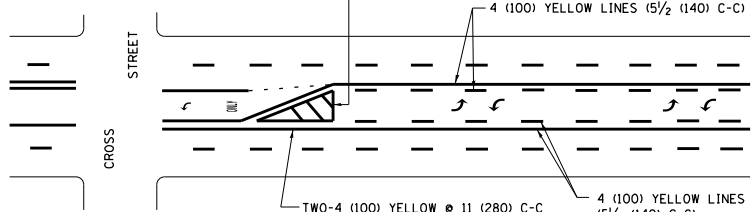


4' (1.2 m) WIDE MEDIANS ONLY



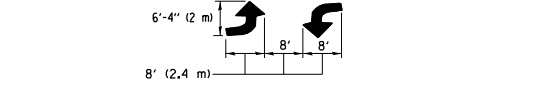
MEDIANS OVER 4' (1.2 m) WIDE

DIAGONAL LINE SPACING: 50' (15 m) C-C (LESS THAN 30MPH (50 km/h))
75' (25 m) C-C 30MPH (50 km/h) TO 45MPH (70 km/h)
150' (45 m) C-C (MORE THAN 45MPH (70 km/h))

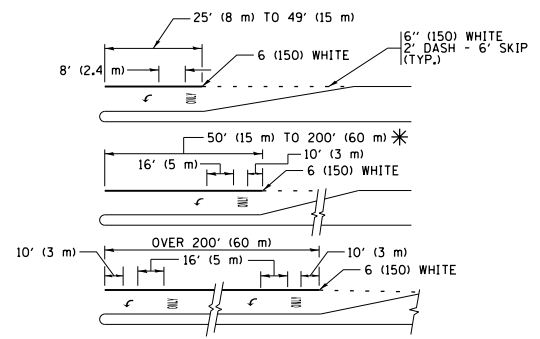


**MEDIAN WITH TWO-WAY LEFT TURN LANE
TYPICAL PAINTED MEDIAN MARKING**

A MINIMUM OF TWO PAIRS OF TURN ARROWS SHALL BE USED, WHITE IN COLOR. ADDITIONAL PAIRS SHALL BE PLACED AT 200' (60 m) TO 300' (90 m) INTERVALS.

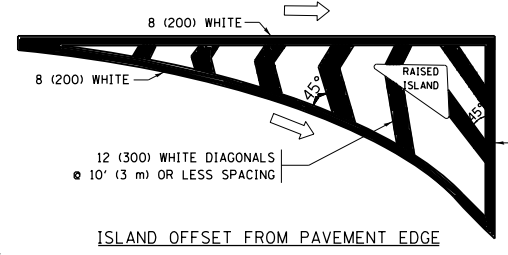


TYPICAL LEFT (OR RIGHT) TURN LANE MARKING

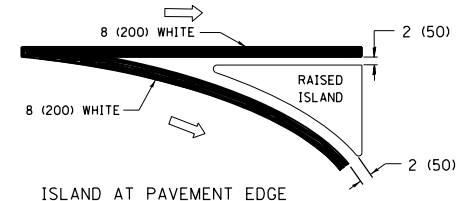


FULL SIZE LETTERS 8" (2.4 m) AND ARROWS SHALL BE USED.
AREA = 15.6 SQ. FT. (1.5 m²) ONLY AREA = 20.8 SQ. FT. (1.9 m²)
* TURN LANES IN EXCESS OF 400' (120 m) IN LENGTH MAY HAVE AN ADDITIONAL SET OF ARROW - "ONLY" INSTALLED MIDWAY BETWEEN THE OTHER TWO SETS OF ARROW - "ONLY".

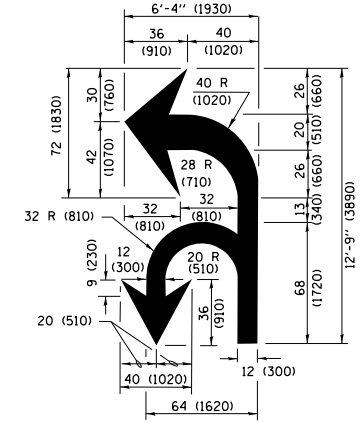
TYPICAL TURN LANE MARKING



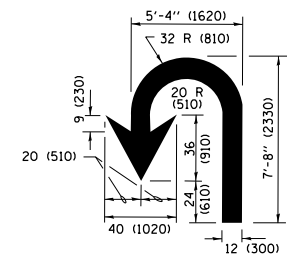
ISLAND OFFSET FROM PAVEMENT EDGE



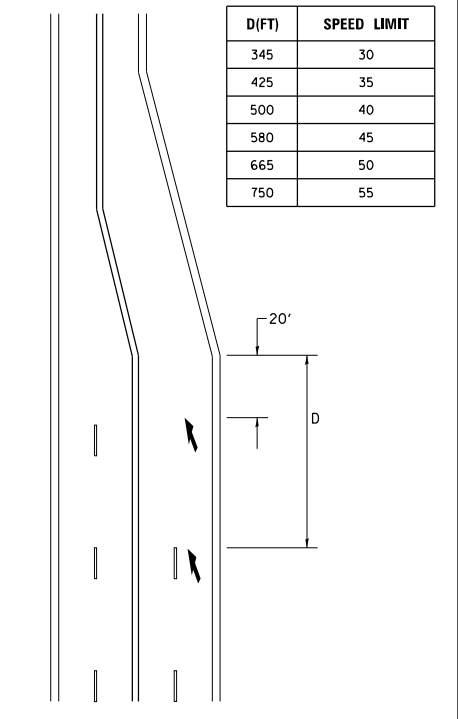
**ISLAND AT PAVEMENT EDGE
TYPICAL ISLAND MARKING**



COMBINATION LEFT AND U-TURN



U-TURN



LANE REDUCTION TRANSITION
* LANE REDUCTION ARROWS REQUIRED AT SPEEDS OF 45 MPH OR GREATER OR WHEN SPECIFIED IN PLANS.

D(FT)	SPEED LIMIT
345	30
425	35
500	40
580	45
665	50
750	55

TYPE OF MARKING	WIDTH OF LINE	PATTERN	COLOR	SPACING /REMARKS
CENTERLINE ON 2 LANE PAVEMENT	4 (100)	SKIP-DASH	YELLOW	10' (3 m) LINE WITH 30' (9 m) SPACE
CENTERLINE ON MULTI-LANE UNDIVIDED PAVEMENT	2 @ 4 (100)	SOLID	YELLOW	11 (280) C-C
NO PASSING ZONE LINES FOR ONE DIRECTION FOR BOTH DIRECTIONS	4 (100) 2 @ 4 (100)	SOLID SOLID	YELLOW YELLOW	5 1/2 (140) C-C FROM SKIP-DASH CENTERLINE 11 (280) C-C OMIT SKIP-DASH CENTERLINE BETWEEN
LANE LINES	4 (100) 5 (125) ON FREEWAYS	SKIP-DASH SKIP-DASH	WHITE WHITE	10' (3 m) LINE WITH 30' (9 m) SPACE
DOTTED LINES (EXTENSIONS OF CENTER, LANE OR TURN LANE MARKINGS)	SAME AS LINE BEING EXTENDED	SKIP-DASH	SAME AS LINE BEING EXTENDED	2' (600) LINE WITH 6' (1.8 m) SPACE
EDGE LINES	4 (100)	SOLID	YELLOW-LEFT WHITE-RIGHT	OUTLINE MEDIANS IN YELLOW
TURN LANE MARKINGS	6 (150) LINE; FULL SIZE LETTERS & SYMBOLS (8' (2.4m))	SOLID	WHITE	SEE TYPICAL TURN LANE MARKING DETAIL
TWO WAY LEFT TURN MARKING	2 @ 4 (100) EACH DIRECTION 8' (2.4m) LEFT ARROW	SKIP-DASH AND SOLID IN PAIRS	YELLOW WHITE	10' (3 m) LINE WITH 30' (9 m) SPACE FOR SKIP-DASH; 5 1/2 (140) C-C BETWEEN SOLID LINE AND SKIP-DASH LINE SEE TYPICAL TWO-WAY LEFT TURN MARKING DETAIL
CROSSWALK LINES (PEDESTRIAN) A. DIAGONALS (BIKE & EQUESTRIAN) B. LONGITUDINAL BARS (SCHOOL)	2 @ 6 (150) 12 (300) @ 45° 12 (300) @ 90°	SOLID SOLID SOLID	WHITE WHITE WHITE	NOT LESS THAN 6' (1.8 m) APART 2' (600) APART 2' (600) APART SEE TYPICAL CROSSWALK MARKING DETAILS.
STOP LINES	24 (600)	SOLID	WHITE	PLACE 4' (1.2 m) IN ADVANCE OF AND PARALLEL TO CROSSWALK, IF PRESENT, OTHERWISE, PLACE AT DESIRED STOPPING POINT, PARALLEL TO CROSSROAD CENTERLINE, WHERE POSSIBLE
PAINTED MEDIANS	2 @ 4 (100) WITH 12 (300) DIAGONALS @ 45° NO DIAGONALS USED FOR 4' (1.2 m) WIDE MEDIANS	SOLID	YELLOW; TWO WAY TRAFFIC WHITE; ONE WAY TRAFFIC	11 (280) C-C FOR THE DOUBLE LINE SEE TYPICAL PAINTED MEDIAN MARKING.
GORE MARKING AND CHANNELIZING LINES	8 (200) WITH 12 (300) DIAGONALS @ 45°	SOLID	WHITE	DIAGONALS: 15' (4.5 m) C-C (LESS THAN 30MPH (50 km/h)) 20' (6 m) C-C 30MPH (50 km/h) TO 45MPH (70 km/h) 30' (9 m) C-C (OVER 45MPH (70 km/h))
RAILROAD CROSSING	24 (600) TRANSVERSE LINES; "RR" IS 6' (1.8 m) LETTERS; 16 (400) LINE FOR "X"	SOLID	WHITE	SEE STATE STANDARD 780001 AREA OF: "R"=3.6 SQ. FT. (0.33 m ²) EACH "X"=54.0 SQ. FT. (5.0 m ²)
SHOULDER DIAGONALS (REQUIRED FOR SHOULDERS ≥ 8')	12 (300) @ 45°	SOLID	WHITE - RIGHT YELLOW - LEFT	50' (15 m) C-C (LESS THAN 30MPH (50 km/h)) 75' (25 m) C-C (30 MPH (50 km/h) TO 45MPH (70 km/h)) 150' (45 m) C-C (OVER 45MPH (70 km/h))
U TURN ARROW	SEE DETAIL	SOLID	WHITE	16.3 SF
2 ARROW COMBINATION LEFT AND U TURN	SEE DETAIL	SOLID	WHITE	30.4 SF

FOR FURTHER DETAILS ON PAVEMENT MARKING REFER TO STANDARD SPECIFICATIONS FOR ROAD AND BRIDGE CONSTRUCTION AND STATE STANDARD 780001.

All dimensions are in inches (millimeters) unless otherwise shown.

FILE NAME =	USER NAME = pyrzanowski	DESIGNED - EVERS	REVISED - C. JUCIUS 09-09-09
pw\1\084EBIDINTEG\illinois.gov\PIWIDOT\Documents\DOT Offices\District 1\Projects\DI284\Drawings\Design\DistStd.dgn		CHECKED -	REVISED - C. JUCIUS 07-01-13
Default	PLOT SCALE = 100.0000' / in.	DATE - 03-19-90	REVISED - C. JUCIUS 12-21-15
	PLOT DATE = 1/10/2018		REVISED - C. JUCIUS 04-12-16

**STATE OF ILLINOIS
DEPARTMENT OF TRANSPORTATION**

DISTRICT ONE TYPICAL PAVEMENT MARKINGS			
SCALE: NONE	SHEET 1	OF 1 SHEETS	STA. TO STA.

F.A.P. RTE.	SECTION	COUNTY	TOTAL SHEETS	SHEET NO.
344	46-15B-1-BR	LAKE	25	23
TC-13			CONTRACT NO. 62F34	
ILLINOIS FED. AID PROJECT				

TURN BAY ENTRANCE AT START OF LANE CLOSURE TAPER

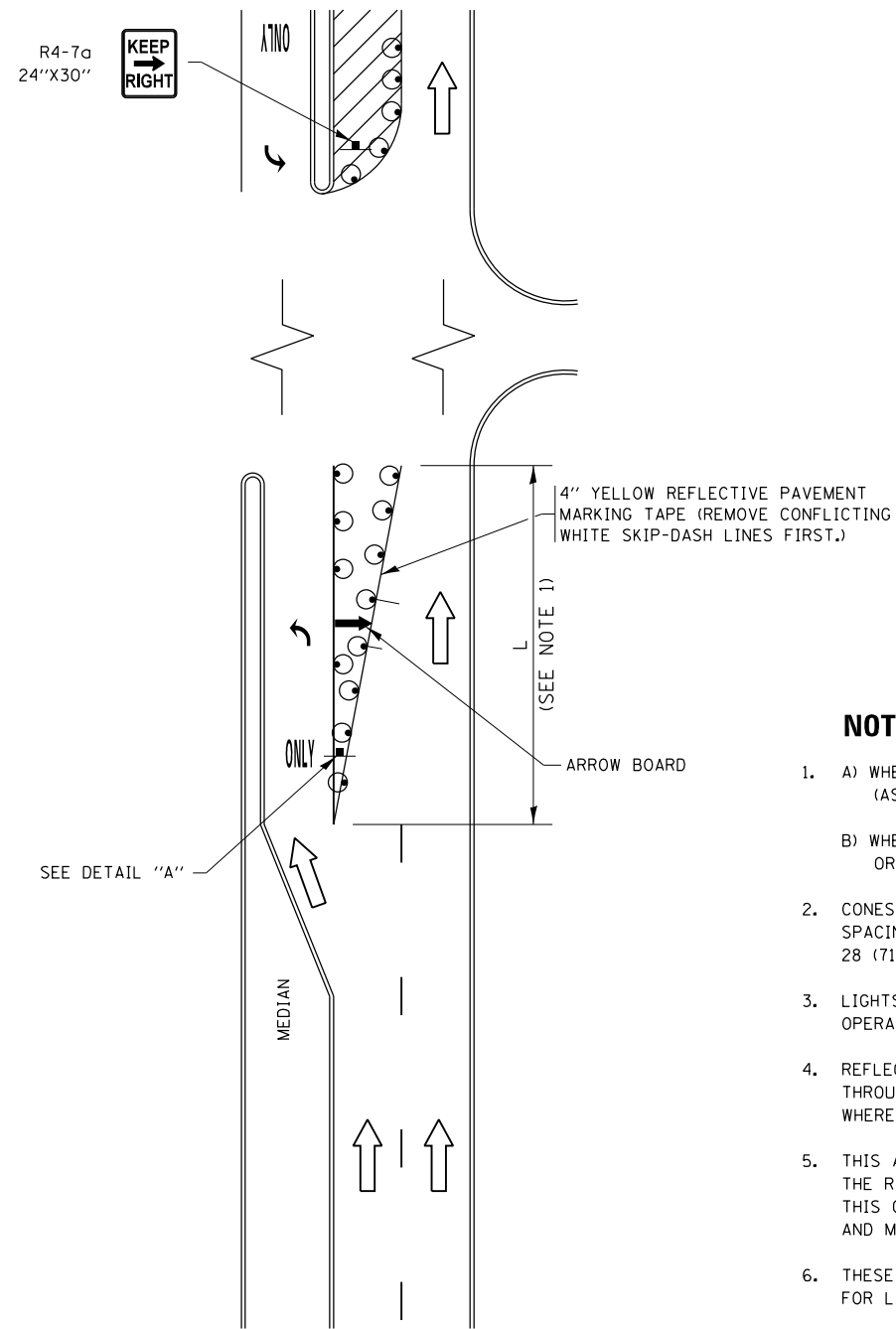


FIGURE 1

TURN BAY ENTRANCE WITHIN A LANE CLOSURE

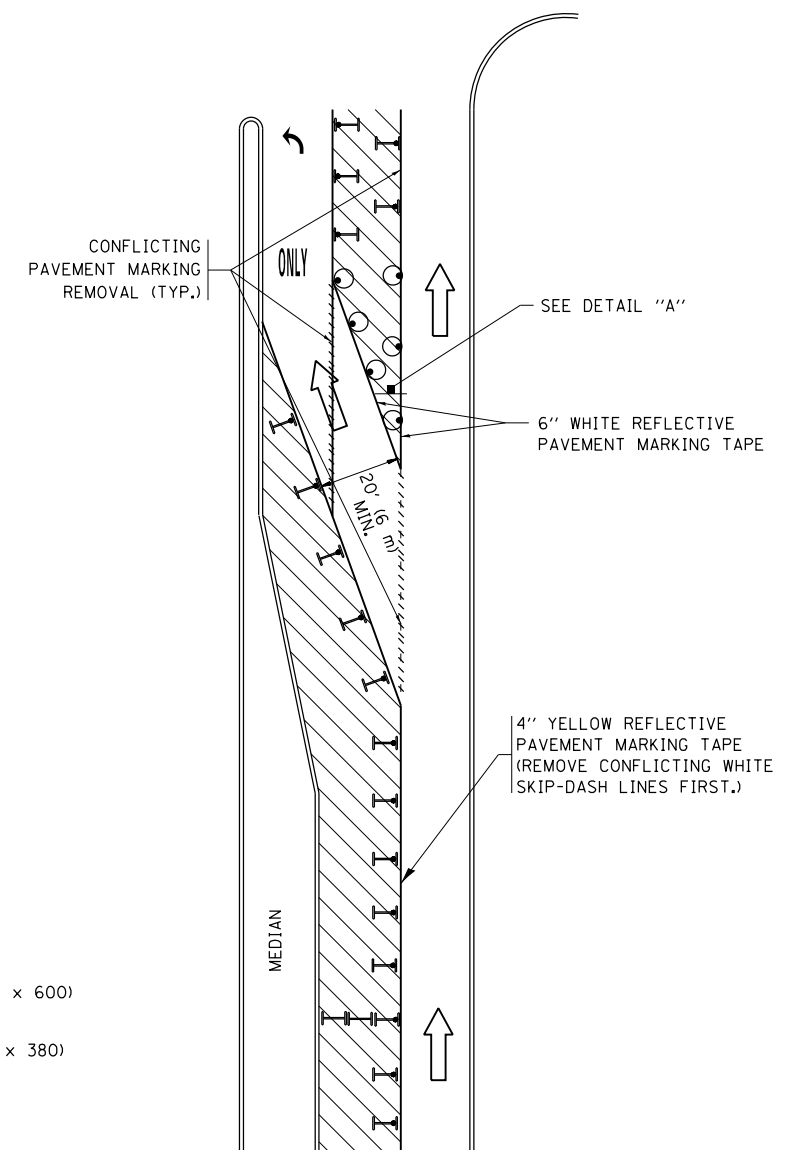


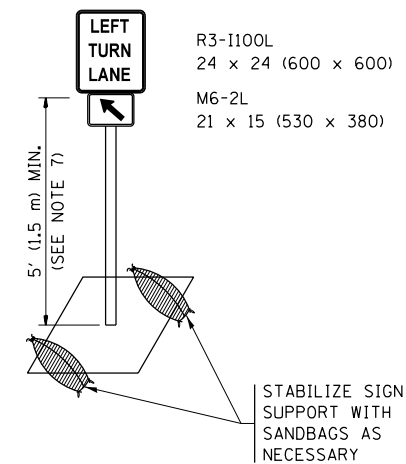
FIGURE 2

LEGEND

- WORK AREA
- LANE OPEN TO TRAFFIC
- ARROW BOARD
- TYPE I OR II BARRICADE OR DRUM WITH STEADY BURN LIGHT
- DRUM WITH STEADY BURN LIGHT
- SIGN ASSEMBLY
- TYPE I OR II CHECK BARRICADE WITH FLASHING LIGHT

NOTES:

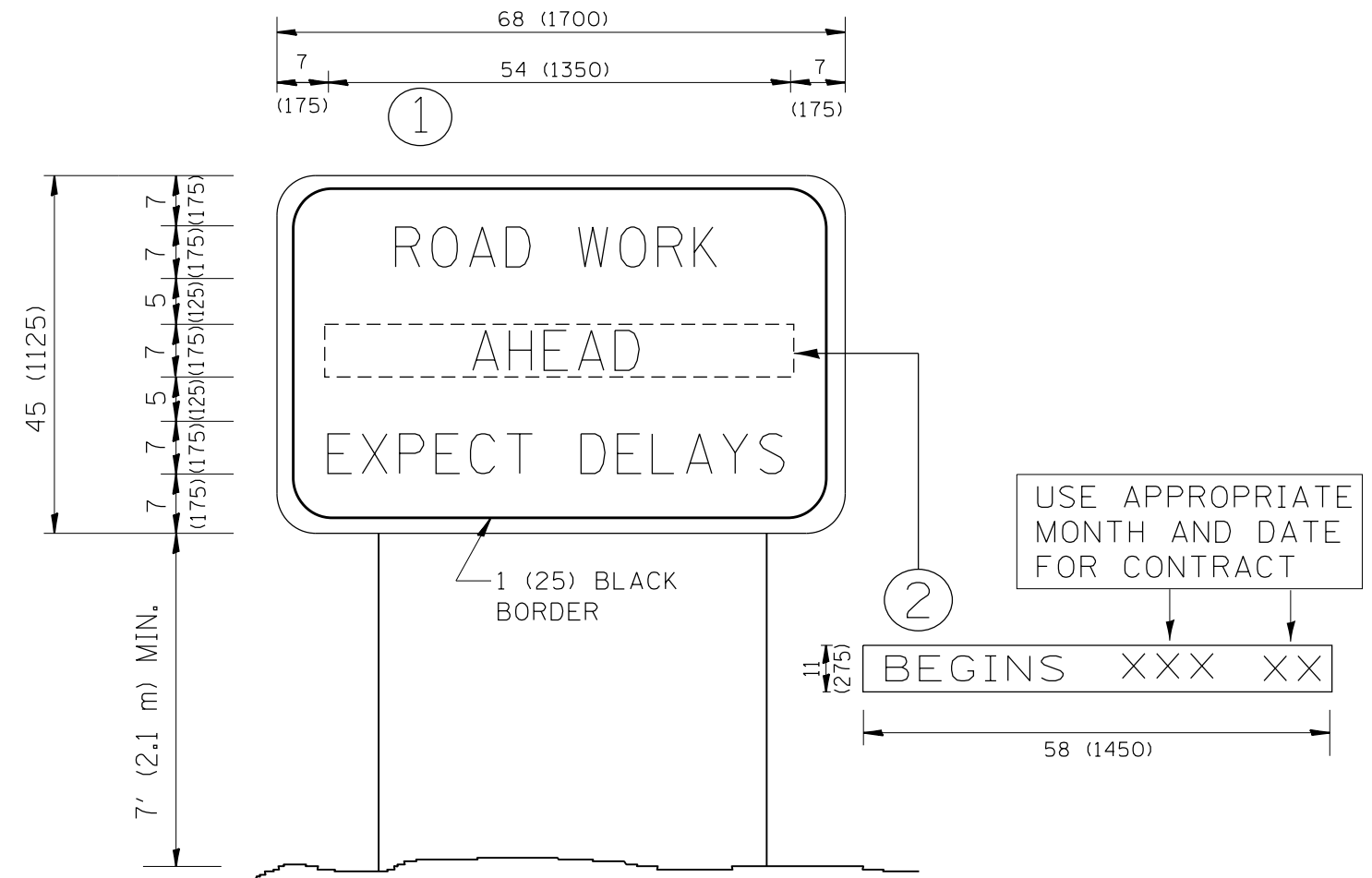
1. A) WHEN "L" IS \leq THE STORAGE LENGTH OF THE TURN LANE (AS SHOWN IN FIG. 1), USE FIGURE 1.
B) WHEN "L" IS $>$ THE STORAGE LENGTH OF THE TURN LANE OR THE TURN LANE IS WITHIN THE LANE CLOSURE, USE FIGURE 2.
2. CONES MAY BE SUBSTITUTED FOR BARRICADES OR DRUMS AT HALF THE SPACING DURING DAY OPERATIONS. CONES SHALL BE A MINIMUM OF 28 (710) IN HEIGHT.
3. LIGHTS WILL NOT BE REQUIRED ON BARRICADES OR DRUMS FOR DAY OPERATIONS. ALL LIGHTS SHALL BE MONODIRECTIONAL.
4. REFLECTIVE TEMPORARY PAVEMENT MARKINGS SHALL BE PLACED THROUGHOUT THE BARRICADED AREAS OF EACH TURN BAY AS SHOWN WHERE THE CLOSURE TIME IS GREATER THAN FOURTEEN (14) DAYS.
5. THIS APPLICATION ALSO APPLIES WHEN WORK IS BEING PERFORMED IN THE RIGHT LANE(S) AND THE RIGHT TURN BAY IS TO REMAIN OPEN. UNDER THIS CONDITION, "RIGHT TURN LANE" R3-1100R 24 x 24 (600 x 600) AND M6-2R 21 x 15 (530 x 380) SHALL BE USED.
6. THESE CONTROLS SHALL SUPPLEMENT MAINLINE TRAFFIC CONTROL FOR LANE CLOSURES.
7. THE SIGNS SHALL BE MOUNTED ABOVE THE BARRICADES/DRUMS ON SEPARATE SIGN SUPPORTS THAT MEET NCHRP 350 OR MASH PREQUIREMENTS.
8. TRAFFIC CONTROL AND PROTECTION AT TURN BAYS (TO REMAIN OPEN TO TRAFFIC) SHALL BE INCLUDED IN THE COST OF SPECIFIED TRAFFIC CONTROL STANDARDS OR ITEMS.



DETAIL A

All dimensions are in inches (millimeters) unless otherwise shown.

FILE NAME =	USER NAME = pyrzenowski	REVISED - T. RAMMACHER 09-08-94	REVISED - R. BORO 09-14-09	STATE OF ILLINOIS DEPARTMENT OF TRANSPORTATION	TRAFFIC CONTROL AND PROTECTION AT TURN BAYS (TO REMAIN OPEN TO TRAFFIC)	F.A.P. R.T.E.	SECTION	COUNTY	TOTAL SHEETS	SHEET NO.	
pw:\IL\084EBIDINTEG\illinois.gov\PI\DOT\Documents\DOT Offices\District 1\Projects\DI284\REVISED Design\HOUSEH 11-07-95	REVISED - A. HOUSEH 11-07-95	REVISED - A. SCHUETZE 07-01-13	REVISED - A. SCHUETZE 07-01-13			344	46-15B-1-BR	LAKE	25	24	
Default	PLOT SCALE = 100.0000' / in.	REVISED - A. HOUSEH 10-12-96	REVISED - A. SCHUETZE 09-15-16			TC-14		CONTRACT NO. 62F34			
	PLOT DATE = 1/10/2018	REVISED - T. RAMMACHER 01-06-00	REVISED -			SCALE: NONE	SHEET 1 OF 1 SHEETS	STA.	TO STA.	ILLINOIS FED. AID PROJECT	



NOTES:

1. USE BLACK LETTERING ON ORANGE BACKGROUND.
2. ERECT SIGNS IN ADVANCE OF THE LOCATION FOR THE "ROAD CONSTRUCTION AHEAD" SIGN AT LOCATIONS AS DIRECTED BY THE ENGINEER.
3. ERECT SIGN ① WITH INSTALLED PANEL ② ONE WEEK PRIOR TO THE START OF CONSTRUCTION.
4. REMOVE PANEL ② SOON AFTER THE START OF CONSTRUCTION.
5. SEE SPECIAL PROVISION FOR "TEMPORARY INFORMATION SIGNING" FOR ADDITIONAL INFORMATION.
6. ONE SIGN ASSEMBLY EQUALS 25.70 SQ. FT. (2.3 SQ. M.)
7. SHALL BE PAID FOR AS TEMPORARY INFORMATION SIGNING.

ALL DIMENSIONS ARE IN INCHES (MILLIMETERS) UNLESS OTHERWISE SHOWN.

FILE NAME =	USER NAME = pyrozenowski	DESIGNED -	REVISED - R. MIRS 09-15-97
pw:\IL\084EBIDINTEG.illinois.gov\PIWIDOT\Documents\DOT Offices\District 1\Projects\DI284\Drawings\Design\DistStd.dgn		CHECKED -	REVISED - R. MIRS 12-11-97
		DATE -	REVISED - T. RAMMACHER 02-02-99
			REVISED - C. JUCIUS 01-31-07

**STATE OF ILLINOIS
DEPARTMENT OF TRANSPORTATION**

**ARTERIAL ROAD
INFORMATION SIGN**

SCALE: NONE SHEET NO. 1 OF 1 SHEETS STA. TO STA.

F.A.P. RTE.	SECTION	COUNTY	TOTAL SHEETS	SHEET NO.
344	46-15B-1-BR	LAKE	25	25
TC-22			CONTRACT NO. 62F34	
FED. ROAD DIST. NO. 1 ILLINOIS FED. AID PROJECT				