

STATE OF ILLINOIS
DEPARTMENT OF TRANSPORTATION

F.A.I. DIST.	SECTION	COUNTY	TOTAL SHEETS	SHEET NO.
80	D2 BC 2018-4	ROCK ISLAND	5	1
		ILLINOIS	CONTRACT NO. 64M69	

INDEX OF SHEETS

1. COVER SHEET, INDEX OF SHEETS, STATE STANDARDS
2. SUMMARY OF QUANTITIES
3. SCHEDULE OF QUANTITIES
4. LOCATION MAP ROCK ISLAND COUNTY
5. EXISTING PLAN AND ELEVATION SHEET

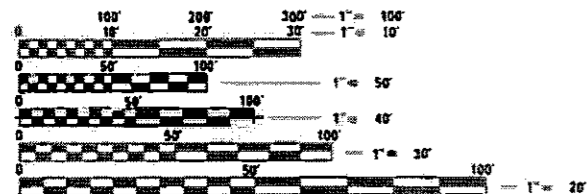
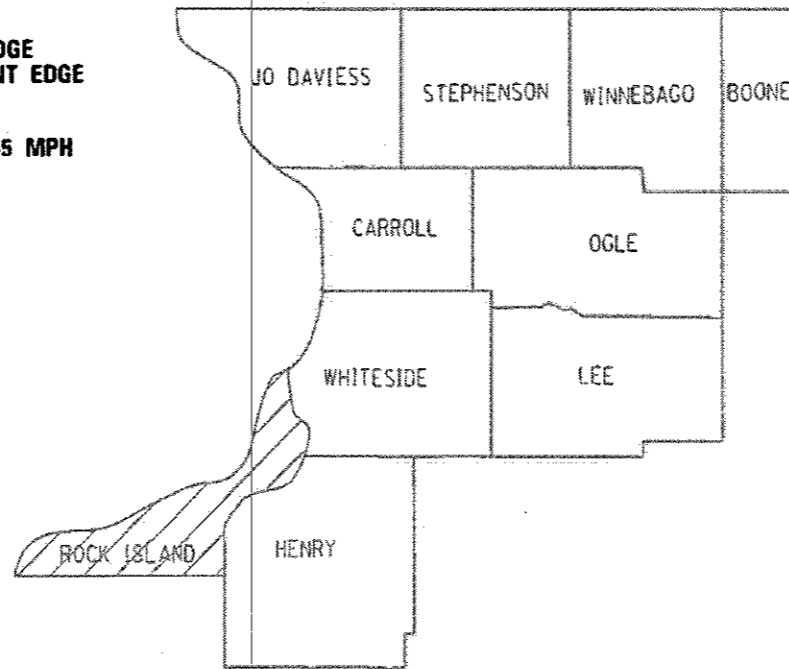
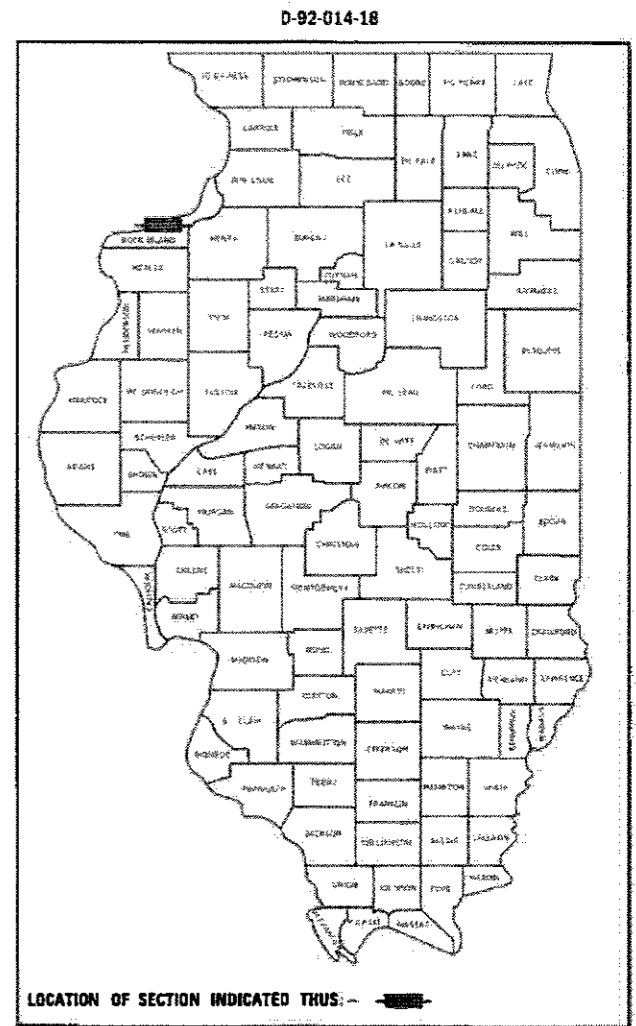
PROPOSED
HIGHWAY PLANS

F.A.I. ROUTE 80 (I-80)
SECTION D2 BC 2018-4
PROJECT: NHPP-HV2X(202)
TYPE of IMPROVEMENT: BRIDGE WASHING
ROCK ISLAND COUNTY

C-92-018-18

STATE STANDARDS

- 701006-05 OFF-ROAD OPERATIONS, 2L, 2W, 15'(4.5m) TO 24"(600mm) FROM PAVEMENT EDGE
- 701101-05 OFF-ROAD OPERATIONS, MULTILANE, 15'(4.5m) TO 24"(600mm) FROM PAVEMENT EDGE
- 701400-09 APPROACH TO LANE CLOSURE, FREEWAY/EXPRESSWAY
- 701406-11 LANE CLOSURE, FREEWAY/EXPRESSWAY, DAY OPERATIONS ONLY
- 701411-09 LANE CLOSURE, MULTILANE, AT ENTRANCE OR EXIT RAMP FOR SPEEDS ≥ 45 MPH
- 701428-01 TRAFFIC CONTROL SETUP AND REMOVAL FREEWAY/EXPRESSWAY
- 701901-07 TRAFFIC CONTROL DEVICES
- 720011-01 METAL POSTS FOR SIGNS, MARKERS AND DELINEATORS
- 728001-01 TELESCOPING STEEL SIGN SUPPORT
- 729001-01 APPLICATIONS OF TYPES A & B METAL POSTS (FOR SIGNS & MARKERS)
- 701401-11 LANE CLOSURE, FREEWAY/EXPRESSWAY



FULL SIZE PLANS HAVE BEEN PREPARED USING STANDARD ENGINEERING SCALES. REDUCED SIZED PLANS WILL NOT CONFORM TO STANDARD SCALES. IN MAKING MEASUREMENTS ON REDUCED PLANS THE ABOVE SCALES MAY BE USED.

J.U.L.I.E.
JOINT UTILITY LOCATION INFORMATION FOR EXCAVATION
1-800-892-0123
OR 811

PROJECT ENGINEER: DAVID DOSS (815) 284-5416
PROJECT MANAGER: MAHMOUD ETEMADI (815) 284-5393

CONTRACT NO. 64M69

STATE OF ILLINOIS
DEPARTMENT OF TRANSPORTATION

SUBMITTED: 1-25-2018
[Signature]
REGIONAL ENGINEER

Mar 23 2018
[Signature]
ENGINEER OF DESIGN AND ENVIRONMENT

Mar 23 2018
[Signature]
DIRECTOR OF PROGRAM DEVELOPMENT

PRINTED BY THE AUTHORITY
OF THE STATE OF ILLINOIS

SUMMARY OF QUANTITIES

Paycode	Description	Units	Total	ILLINOIS	IOWA
				URBAN 90% FEDERAL 10% STATE 0047	URBAN 100% STATE 0047
59200101	BRIDGE WASHING NO. 1	EACH	1	0.5	0.5
67100100	MOBILIZATION	L SUM	1	0.5	0.5
70100420	TRAFFIC CONTROL AND PROTECTION, STANDARD 701411	EACH	2	1	1
70100700	TRAFFIC CONTROL AND PROTECTION, STANDARD 701406	L SUM	1	0.5	0.5
Z0048665	RAILROAD PROTECTIVE LIABILITY INSURANCE	L SUM	1	0.5	0.5

MODEL: Detail; FILE NAME: \\VIL04BIBID\INTEC\Illinois\gov\FWIDOT\Documents\DOT_Offices\District 2\Projects\Operational\Bridge_Section\Bridge_Washing_Contract\2018\64M69_SPC\Cover.dgn

5

USER NAME = dossed	DESIGNED - _____	REVISED - _____
PLOT SCALE = 40.0000' / in.	DRAWN - _____	REVISED - _____
PLOT DATE = Feb-22-2018 11:07:07 AM	CHECKED - _____	REVISED - _____
	DATE - _____	REVISED - _____

**STATE OF ILLINOIS
DEPARTMENT OF TRANSPORTATION**

SUMMARY OF QUANTITIES

SCALE: _____ SHEET _____ OF _____ SHEETS STA. _____ TO STA. _____

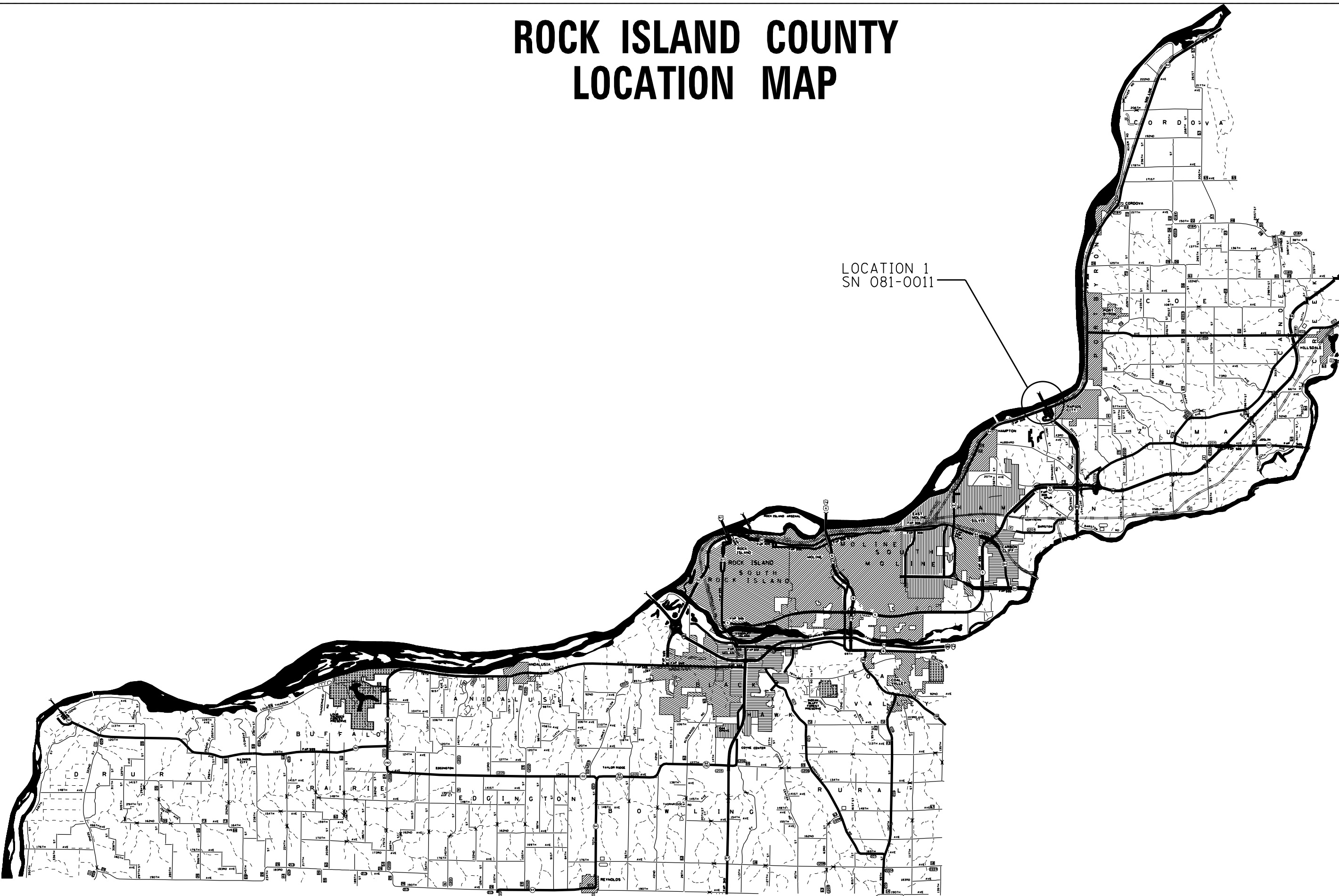
F.A.I. RTE.	SECTION	COUNTY	TOTAL SHEETS	SHEET NO.
80	D2 BC 2018-4	ROCK ISLAND	5	2
CONTRACT NO. 64M69				
ILLINOIS FED. AID PROJECT				

SCHEDULE OF QUANTITIES

Pay Item Spring 2018	SN	Feature Crossed	Facility Carried	Bridge Location
BRIDGE WASHING NO. 1	081-0011	Mississippi River	FAI 80 (I-80)	Near LeClaire Iowa
Pay Item Fall 2018	SN	Feature Crossed	Facility Carried	Bridge Location
BRIDGE WASHING NO. 2	081-0011	Mississippi River	FAI 80 (I-80)	Near LeClaire Iowa

MODEL: Default
 FILE: \\nas01c.pw.us\illinois\BID\NTEC\Illinois\gov\PI\DOT\Documents\DOT_Offices\District 2\Projects\Operations\Bridges_Section\Bridges_Washing_Contracts\2018\64M69_Bridge_Washing_180_cvr.the.Mississippi.River.CAD\64M69-shr-cover.dgn

ROCK ISLAND COUNTY LOCATION MAP



LOCATION 1
SN 081-0011

MODEL: Default
 FILE: \\p1108\BARD\DOTC\Illinois\poc\PI\DOT\Documents\DOT_Offices\District 2\Projects\Operations\Bridges_Section\Bridges_Washins_Contract\3018\64M69_Bridge_Washins_Contract\3018\64M69_Bridge_Washins_Contract\3018\64M69-RT-cover.dgn

USER NAME = dossed	DESIGNED - _____	REVISED - _____
	DRAWN - _____	REVISED - _____
PLOT SCALE = 40,0000 ' / in.	CHECKED - _____	REVISED - _____
PLOT DATE = Jan-05-2018 02:48:00 PM	DATE - _____	REVISED - _____

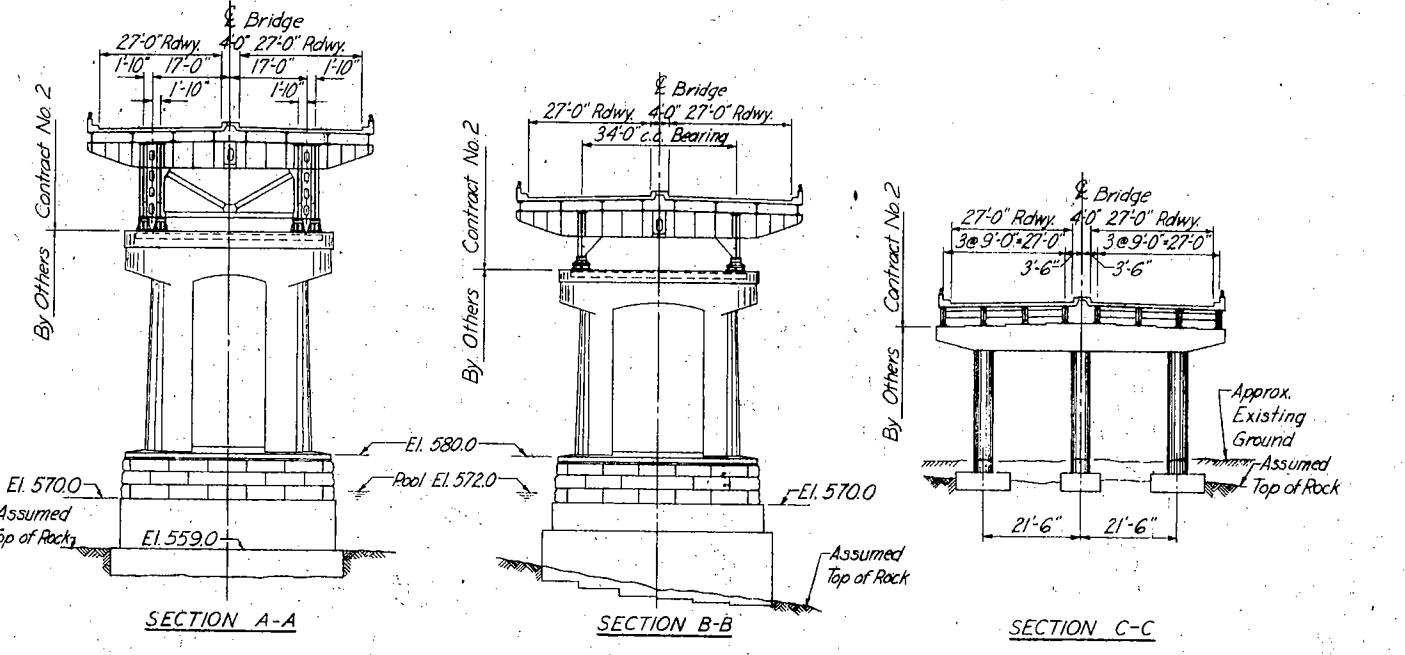
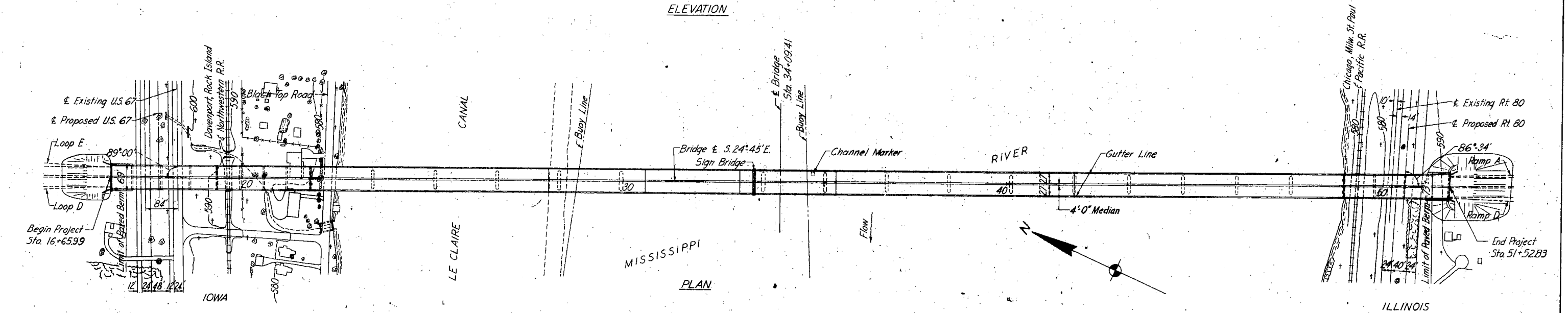
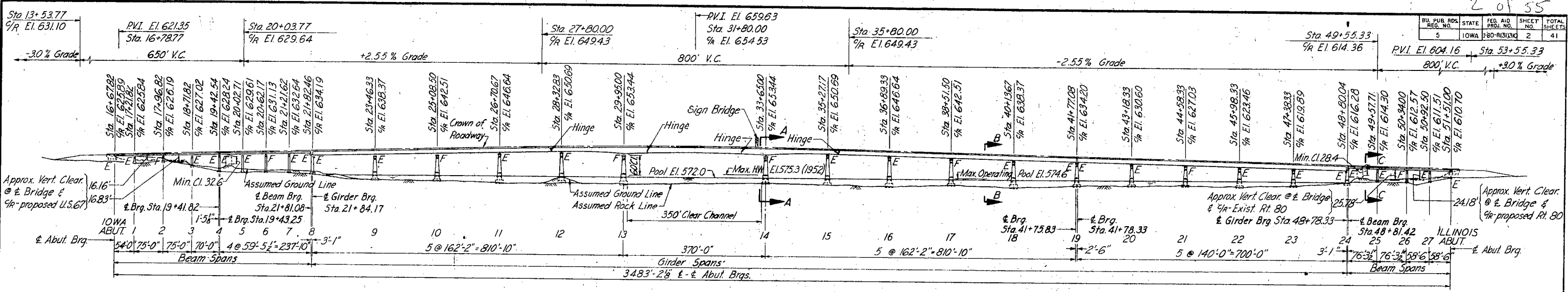
**STATE OF ILLINOIS
DEPARTMENT OF TRANSPORTATION**

**ROCK ISLAND COUNTY
LOCATION MAP**

SCALE: _____ SHEET _____ OF _____ SHEETS STA. _____ TO STA. _____

F.A.I. RTE.	SECTION	COUNTY	TOTAL SHEETS	SHEET NO.
80	D2 BC 2018-4	ROCK ISLAND	5	4
CONTRACT NO. 64M69				
ILLINOIS FED. AID PROJECT				

BU. PUB. REG. NO.	STATE	FED. AID PROJ. NO.	SHEET NO.	TOTAL SHEETS
5	IOWA	1-80-R1313K	2	41



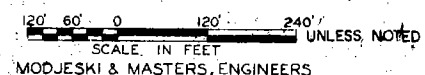
NOTES:

For General Notes, see Sheet No. 3.

The construction included under Contract No. 2 consists of the Superstructure between the Iowa and Illinois Abutments, and the top of backwall for the Iowa and Illinois Abutments. The remainder of the structure shown is for information only.

2/58

IOWA STATE HIGHWAY COMMISSION
AND ILLINOIS DIVISION OF HIGHWAYS
INTERSTATE BRIDGE
OVER MISSISSIPPI RIVER AT LE CLAIRE, IOWA
CONTRACT NO. 2 - SUPERSTRUCTURE
GENERAL PLAN AND ELEVATION



FOR INFORMATION ONLY

0221 60 1323 4835 6897
0221 50 0799 6897 767 3046 6893