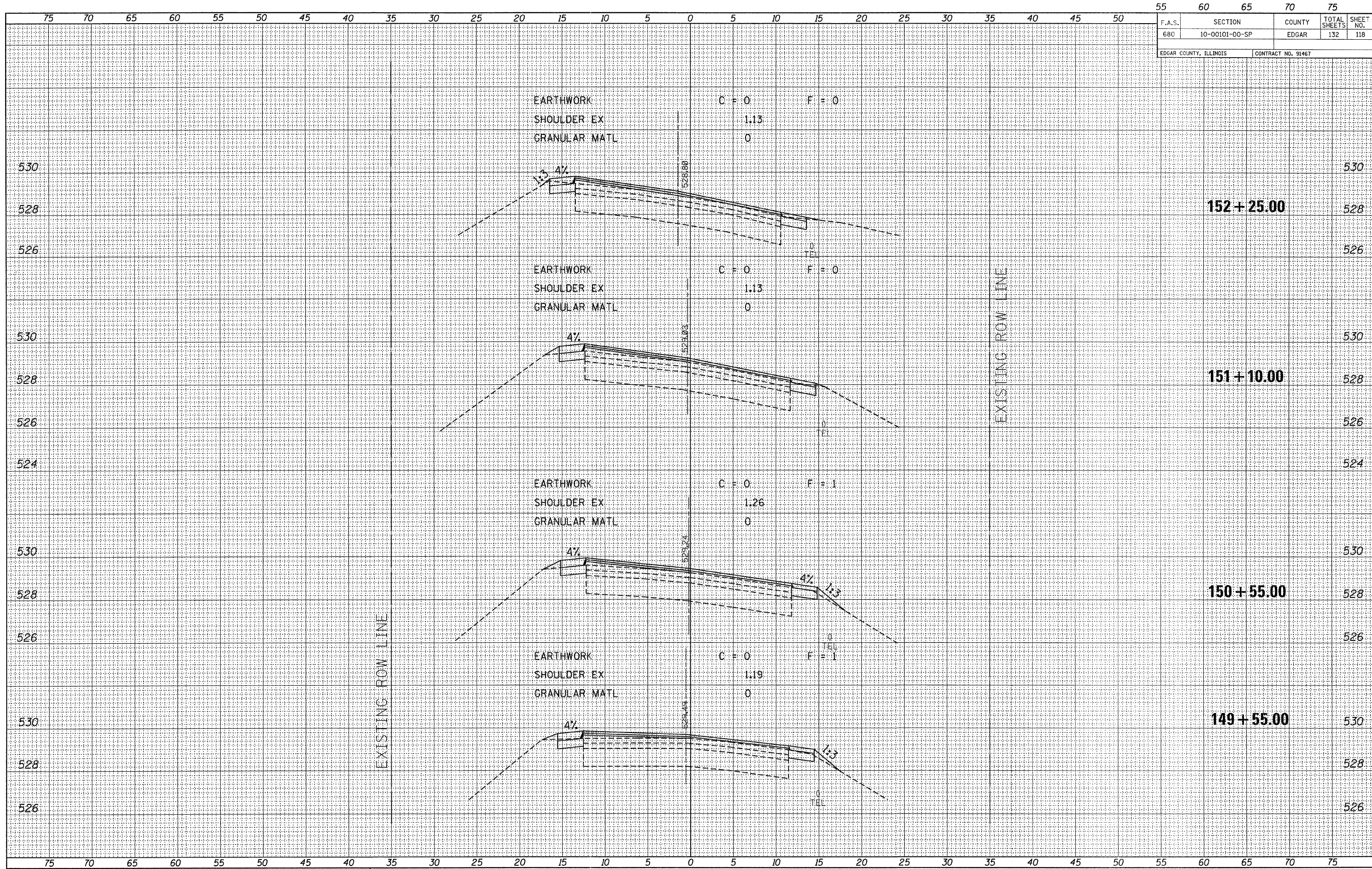


55	60	65	70	75
F.A.S.	SECTION	COUNTY	TOTAL SHEETS	SHEET NO.
680	10-00101-00-SP	EDGAR	132	118
EDGAR COUNTY, ILLINOIS		CONTRACT NO. 91467		

FINAL SURVEY	SURVEYED	DATE
NOTE BOOK NO.	PLOTTED	
	TEMPLATE	
	AREAS CHECKED	

ORIGINAL SURVEY	SURVEYED	DATE
NOTE BOOK NO.	PLOTTED	
	TEMPLATE	
	AREAS CHECKED	



FILE NAME = 118330-ah-t-six.dgn  
 PLOT DATE = 1/19/2012  
 SCALE: 1" = 5' HORZ, 1" = 2' VERT



**CROSS SECTIONS EAST OF ELBRIDGE**  
 STATION 149+55 TO STATION 152+25