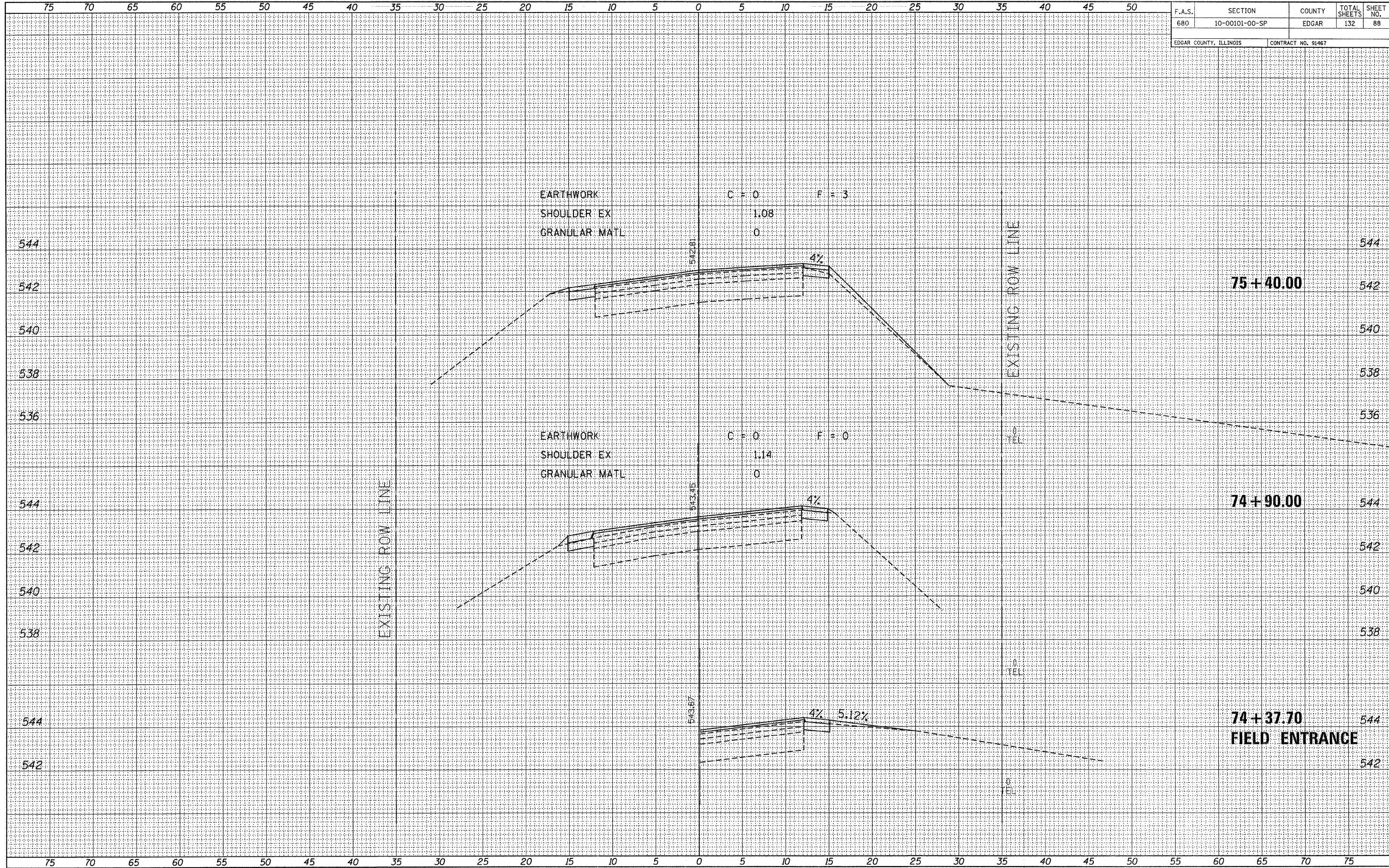


F.A.S.	SECTION	COUNTY	TOTAL SHEETS	SHEET NO.
680	10-00101-00-SP	EDGAR	132	88
EDGAR COUNTY, ILLINOIS		CONTRACT NO. 91467		

BY	DATE
FINAL SURVEY	DATE
NOTE BOOK NO.	
TEMPLATES	
AREAS CHECKED	

BY	DATE
ORIGINAL SURVEY	DATE
NOTE BOOK NO.	
TEMPLATES	
AREAS CHECKED	



FILE NAME = 110330-shr-sxs.dgn
 PLOT DATE = 1/19/2012
 SCALE: 1" = 5' HORZ, 1" = 2' VERT

EDGAR COUNTY HIGHWAY DEPARTMENT

CROSS SECTIONS EAST OF ELBRIDGE
 STATION 74+37.70 TO STATION 75+40