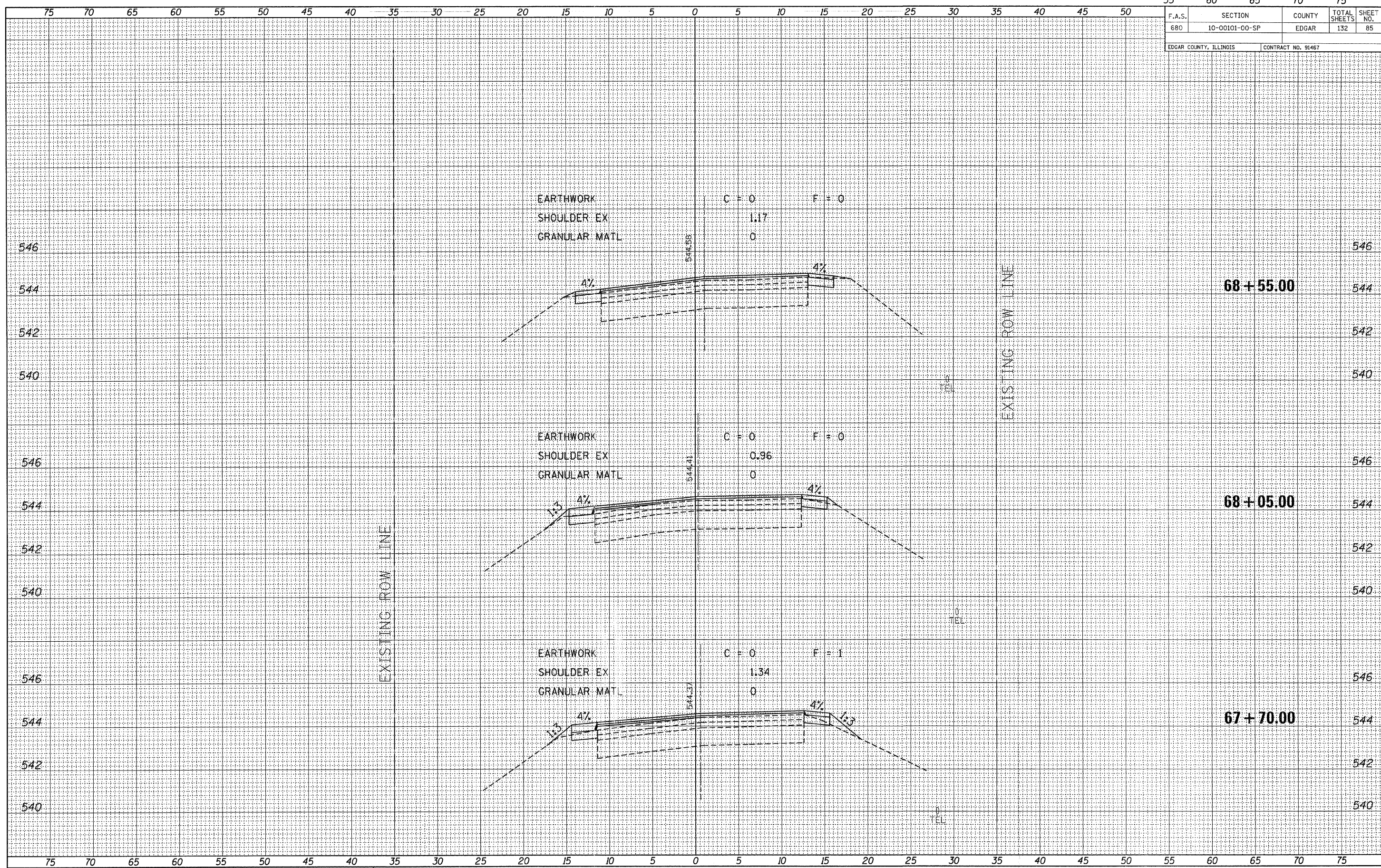


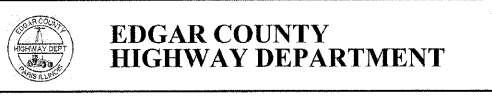
55	60	65	70	75
F.A.S.	SECTION	COUNTY	TOTAL SHEETS	SHEET NO.
680	10-00101-00-SP	EDGAR	132	85
EDGAR COUNTY, ILLINOIS		CONTRACT NO. 91467		

BY	DATE
FINAL SURVEY	SURVEYED
NOTE BOOK	PLOTTED
NO.	TEMPLATE
	AREAS CHECKED

BY	DATE
ORIGINAL SURVEY	SURVEYED
NOTE BOOK	PLOTTED
NO.	TEMPLATE
	AREAS CHECKED



FILE NAME = 110330-shr-axs.dgn  
 PLOT DATE = 1/19/2012  
 SCALE: 1" = 5' HORZ, 1" = 2' VERT



**CROSS SECTIONS EAST OF ELBRIDGE**  
 STATION 67+70 TO STATION 68+55