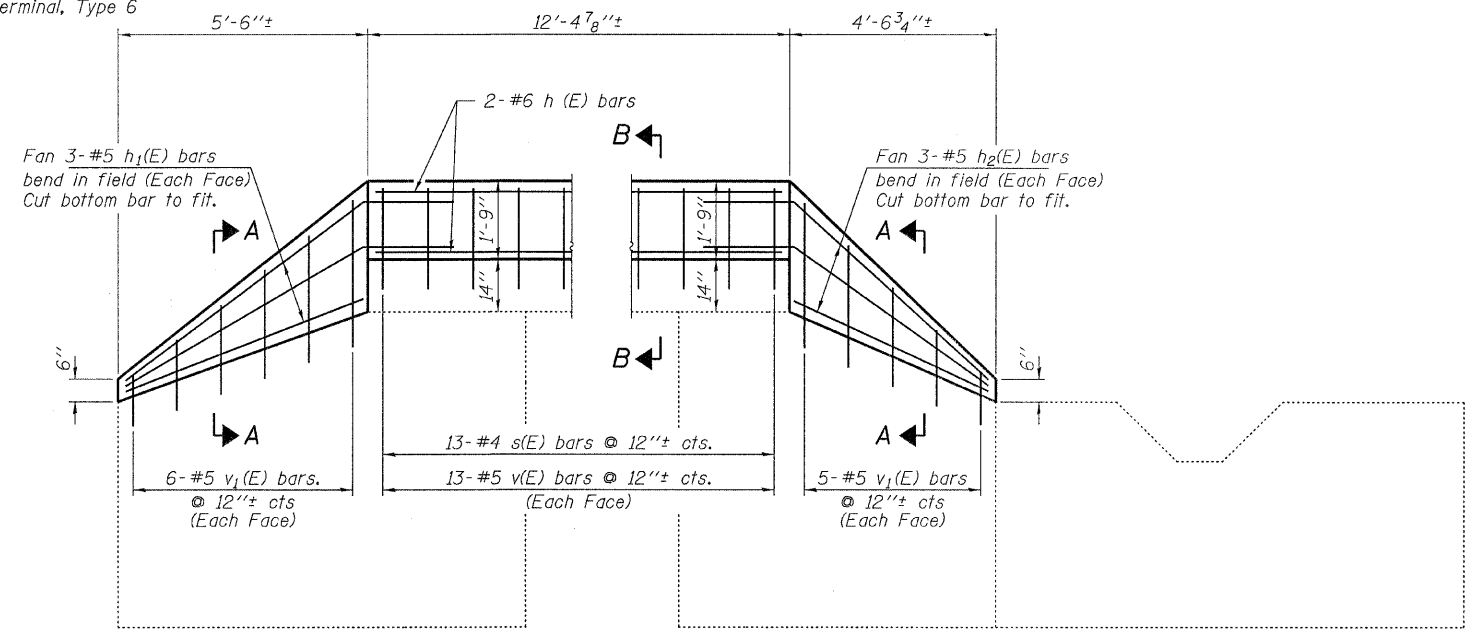


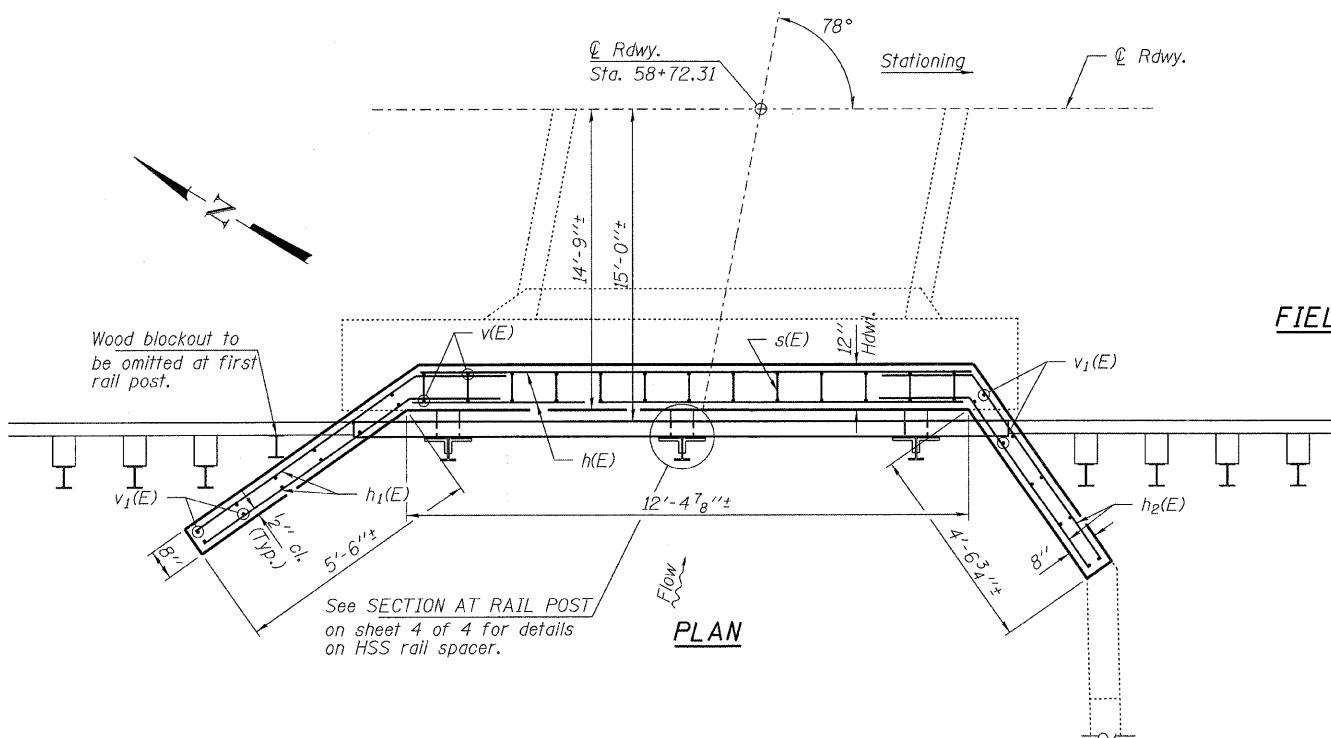
**ELEVATION**  
Showing Rail Post Spaces  
See sheet 4 of 4 for Railing Details.



**NORTH WINGWALL ELEVATION**

**SOUTH WINGWALL ELEVATION**

Note:  
Reinforcement bars shall be drilled and grouted into the existing headwalls and wingwalls. A grout approved by the Department of epoxy grout in accordance with Section 584 of the Standard Specifications, shall be used. The method of grout application shall be approved by the Engineer. Drilling and grouting of reinforcement bars into existing concrete shall be included in the cost of reinforcement bars, epoxy coated.

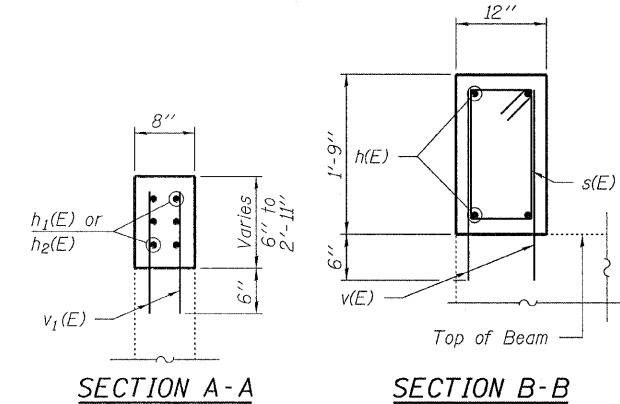


**FIELD CUTTING DIAGRAM - N. WING**

Order v<sub>1</sub>(E) full length. Cut as shown and use remainder in opposite face.

**FIELD CUTTING DIAGRAM - S. WING**

Order v<sub>1</sub>(E) full length. Cut as shown and use remainder in opposite face.

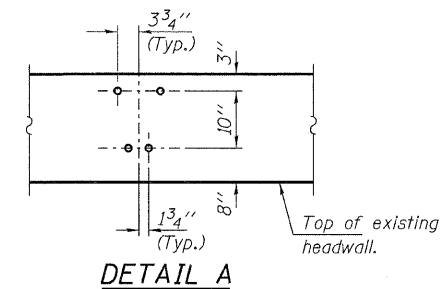
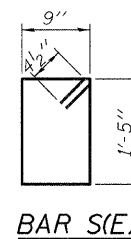


**FIELD CUTTING DIAGRAM - N. WING**

Order v<sub>1</sub>(E) full length. Cut as shown and use remainder in opposite face.

**FIELD CUTTING DIAGRAM - S. WING**

Order v<sub>1</sub>(E) full length. Cut as shown and use remainder in opposite face.



**BILL OF MATERIAL - WEST END**

BAR	NO.	SIZE	LENGTH	SHAPE
h(E)	4	#6	12'-2"	—
h <sub>1</sub> (E)	6	#5	7'-6"	—
h <sub>2</sub> (E)	6	#5	6'-6"	—
s(E)	13	#4	5'-1"	□
v(E)	26	#5	2'-1"	—
v <sub>1</sub> (E)	11	#5	4'-1"	—
Reinforcement Bars, Epoxy Coated			Pound	310
Concrete Box Culverts			Cu. Yd.	1.3