

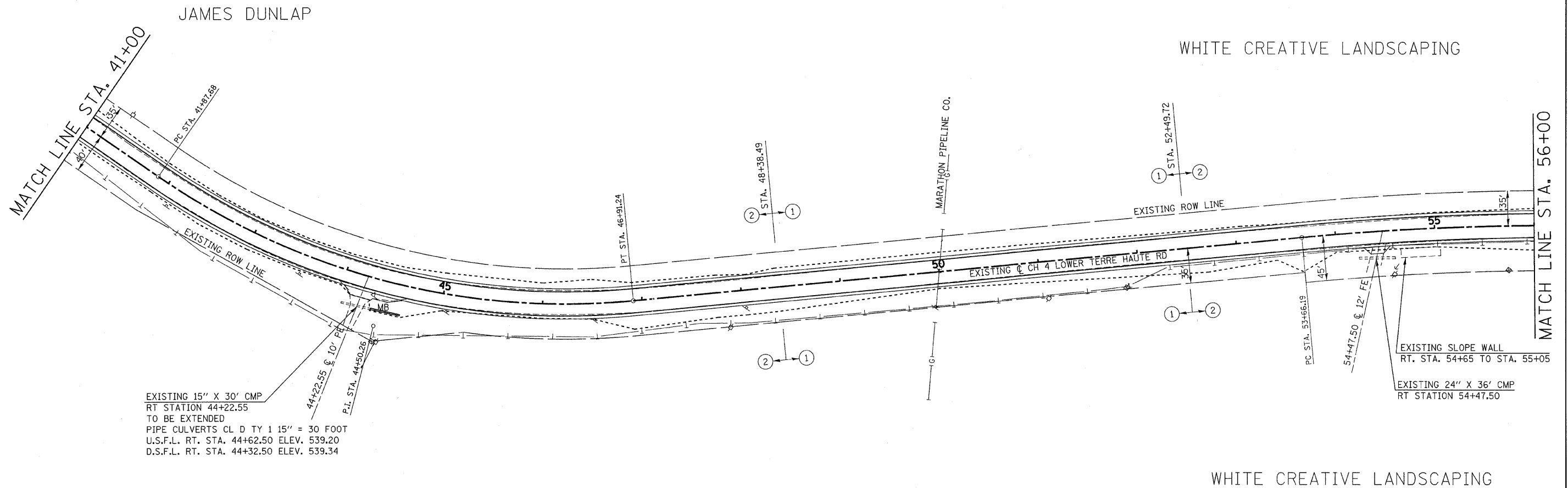
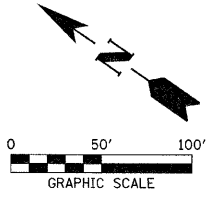
SECTION 6, T.12N., R.10W., 2nd P.M.

SECTION 7, T.12N., R.10W., 2nd P.M.

F.A.S.	SECTION	COUNTY	TOTAL SHEETS	SHEET NO.
680	10-00101-00-SP	EDGAR	132	19
EDGAR COUNTY, ILLINOIS		CONTRACT NO. 91467		

EXIST. \odot CURVE DATA
 PI STA. = 44+50.26
 Δ = 40° 05' 34" (LT)
 D = 7° 57' 43"
 R = 719.63'
 T = 262.58'
 L = 503.56'
 E = 46.41'
 e = 0.08 FT/FT
 T.R. = 33.33'
 S.E. RUN = 163'
 P.C. STA. = 41+87.68
 P.T. STA. = 46+91.24
S.E. ATTAINED:
 STATION 40+44.48 TO STATION 42+40.81
 STATION 46+42.16 TO STATION 48+38.49

EXIST. \odot CURVE DATA
 PI STA. = 55+54.62
 Δ = 7° 50' 22" (RT)
 D = 2° 05' 01"
 R = 2,750.00'
 T = 188.43'
 L = 376.26'
 E = 6.45'
 e = 0.05 FT/FT
 T.R. = 38.30'
 S.E. RUN = 117'
 P.C. STA. = 53+66.20
 P.T. STA. = 57+42.46
S.E. ATTAINED:
 STATION 52+49.72 TO STATION 54+05.01
 STATION 57+03.65 TO STATION 58+58.94



SECTION 6, T.12N., R.10W., 2nd P.M.

SECTION 7, T.12N., R.10W., 2nd P.M.

FILE NAME =
 110330-shr-plans.dgn
 PLOT DATE = 1/19/2012
 SCALE: 1" = 50'

