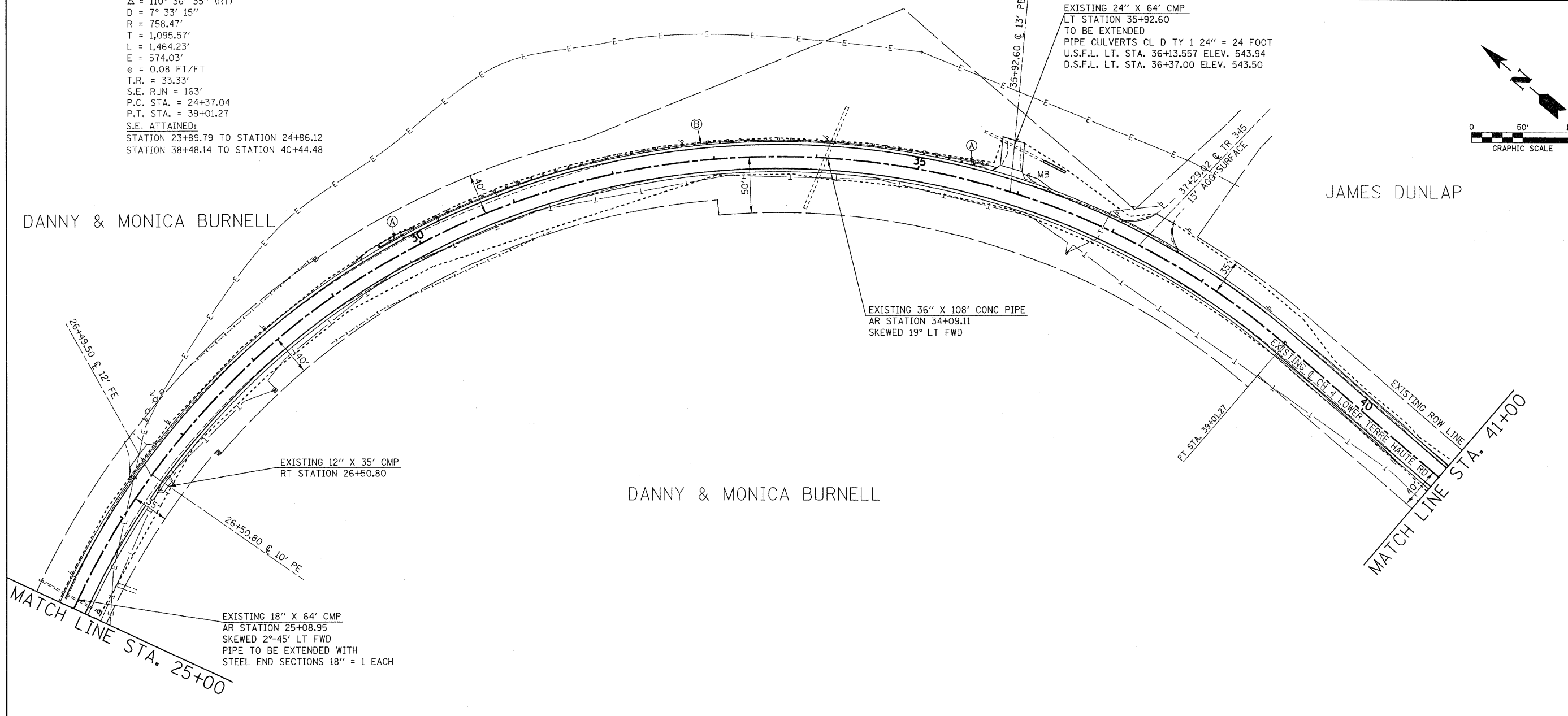
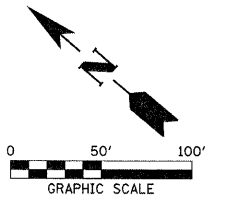


SECTION 6, T.12N., R.10W., 2nd P.M.

F.A.S.	SECTION	COUNTY	TOTAL SHEETS	SHEET NO.
680	10-00101-00-SP	EDGAR	132	18
EDGAR COUNTY, ILLINOIS		CONTRACT NO. 91467		

EXIST. ϕ CURVE DATA
 PI STA. = 35+32.61
 $\Delta = 110^\circ 36' 35''$ (RT)
 $D = 7^\circ 33' 15''$
 $R = 758.47'$
 $T = 1,095.57'$
 $L = 1,464.23'$
 $E = 574.03'$
 $e = 0.08$ FT/FT
 $T.R. = 33.33'$
 $S.E. RUN = 163'$
 $P.C. STA. = 24+37.04$
 $P.T. STA. = 39+01.27$
S.E. ATTAINED:
 STATION 23+89.79 TO STATION 24+86.12
 STATION 38+48.14 TO STATION 40+44.48



MATCH LINE STA. 25+00

MATCH LINE STA. 41+00

- GUARDRAIL LEGEND**
- (A) TBT TYPE 1 (SP) TANGENT
 LT. STA. 29+62 TO LT. STA. 30+12
 LT. STA. 35+12 TO LT. STA. 35+62
 - (B) SPBGR TYPE A
 LT. STA. 30+12 TO LT. STA. 35+12