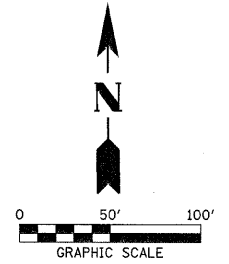


SECTION 1, T.12N., R.11W., 2nd P.M.

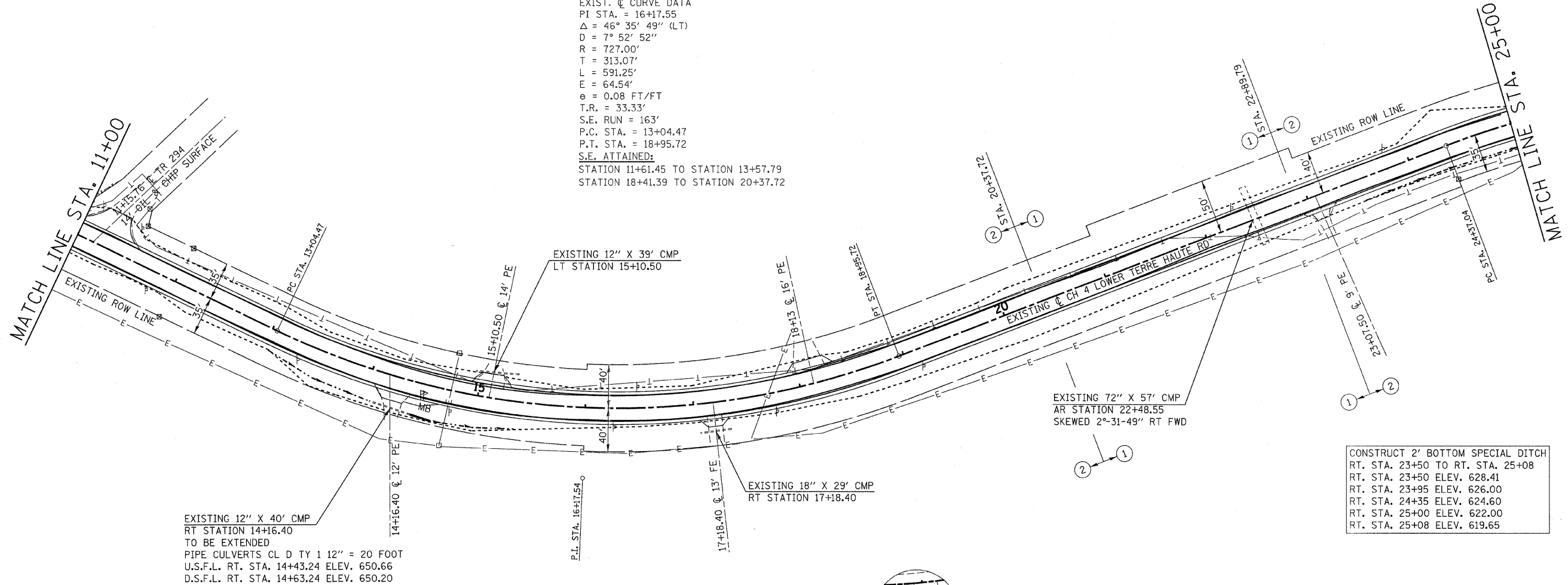
SECTION 6, T.12N., R.10W., 2nd P.M.

F.A.S.	SECTION	COUNTY	TOTAL SHEETS	SHEET NO.
680	10-00101-00-SP	EDGAR	132	17
EDGAR COUNTY, ILLINOIS		CONTRACT NO. 91467		

DANNY & MONICA BURNELL



EXIST. ϕ CURVE DATA
 PI STA. = 16+17.55
 Δ = 46° 35' 49" (LT)
 D = 7° 52' 52"
 R = 727.00'
 T = 313.07'
 L = 591.25'
 E = 64.54'
 e = 0.08 FT/FT
 T.R. = 33.33'
 S.E. RUN = 163'
 P.C. STA. = 13+04.47
 P.T. STA. = 18+95.72
 S.E. ATTAINED:
 STATION 11+61.45 TO STATION 13+57.79
 STATION 18+41.39 TO STATION 20+37.72



CONSTRUCT 2' BOTTOM SPECIAL DITCH
 RT. STA. 13+00 TO RT. STA. 14+05
 RT. STA. 13+00 ELEV. 654.80
 RT. STA. 13+50 ELEV. 653.60
 RT. STA. 14+05 ELEV. 651.04

CONSTRUCT 2' BOTTOM SPECIAL DITCH
 RT. STA. 14+63.24 TO RT. STA. 15+50
 RT. STA. 14+63.24 ELEV. 650.20
 RT. STA. 15+00 ELEV. 649.80
 RT. STA. 15+39 ELEV. 649.10

BM PT1005
 IRON ROD
 38.03' RT. STA. 17+04.36
 N = 1036661.373
 E = 1198125.623
 ELEV. 648.72

CONSTRUCT 2' BOTTOM SPECIAL DITCH
 RT. STA. 23+50 TO RT. STA. 25+08
 RT. STA. 23+50 ELEV. 628.41
 RT. STA. 23+95 ELEV. 626.00
 RT. STA. 24+35 ELEV. 624.60
 RT. STA. 25+00 ELEV. 622.00
 RT. STA. 25+08 ELEV. 619.65

JIM & DIANNE JORDON WAGNER

DANNY & MONICA BURNELL

SECTION 1, T.12N., R.11W., 2nd P.M.

SECTION 6, T.12N., R.10W., 2nd P.M.

PLOT DATE = 1/19/2012
 SCALE: 1" = 50'



EDGAR COUNTY
 HIGHWAY DEPARTMENT

