

**INDEX OF SHEETS**

SHEET NO.	DESCRIPTION
1	TITLE SHEET
2	GENERAL NOTES
3	HIGHWAY STANDARDS AND LEGEND
4	SUMMARY OF QUANTITIES
5-12	LIGHTING PLANS
13-14	PARKING LOT PLANS

04-27-12 LETTING ITEM 185

**STATE OF ILLINOIS  
DEPARTMENT OF TRANSPORTATION  
DIVISION OF HIGHWAYS**

**PLANS FOR PROPOSED  
STREET IMPROVEMENTS**

SCALES

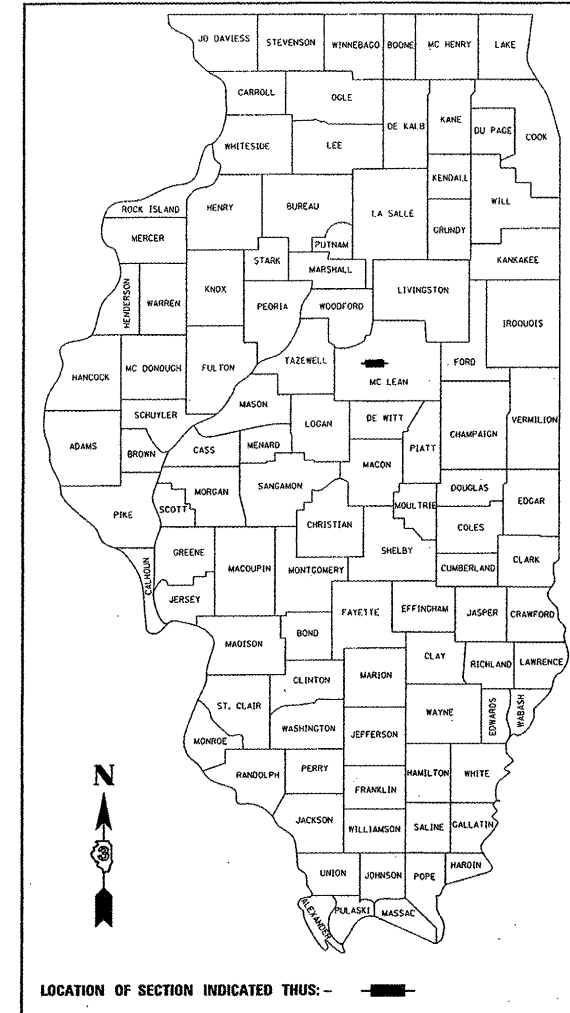
PLAN	1 INCH = 20 FEET
PROFILE HORIZ.	1 INCH = 20 FEET
PROFILE VERT.	1 INCH = 5 FEET
CROSS SECTIONS HORIZ.	1 INCH = 10 FEET
CROSS SECTIONS VERT.	1 INCH = 5 FEET

**TOWN OF NORMAL  
McLEAN COUNTY, ILLINOIS  
SECTION: 10-00242-00-LT  
PROJECT NO. TE-00D5(095)  
JOB NO. C-95-321-11**

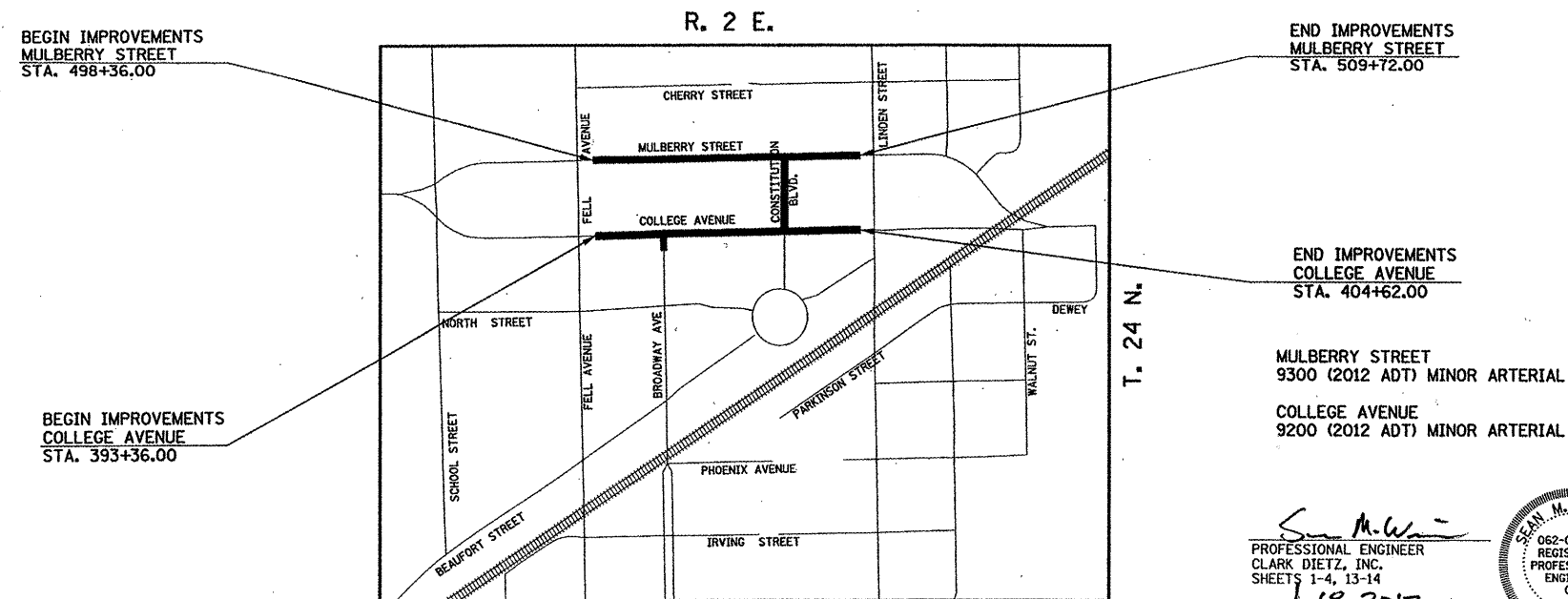
**FUNDING: ENHANCEMENT & LOCAL MATCH**

**COLLEGE AVENUE / MULBERRY STREET  
ROADWAY LIGHTING**

F.A.U. RTE.	SECTION	COUNTY	TOTAL SHEETS	SHEET NO.
	10-00242-00-LT	MCLEAN	14	1
		ILLINOIS	CONTRACT NO. 91460	



**ILLINOIS HIGHWAY STANDARD DRAWINGS**  
(SEE SHEET NO. 3)



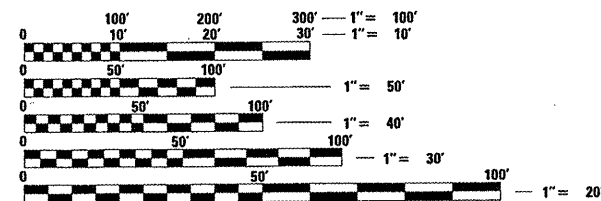
BEGIN IMPROVEMENTS  
MULBERRY STREET  
STA. 498+36.00

END IMPROVEMENTS  
MULBERRY STREET  
STA. 509+72.00

BEGIN IMPROVEMENTS  
COLLEGE AVENUE  
STA. 393+36.00

END IMPROVEMENTS  
COLLEGE AVENUE  
STA. 404+62.00

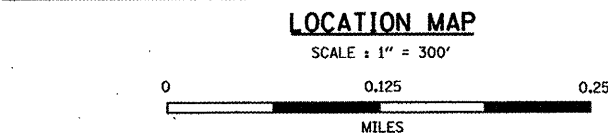
MULBERRY STREET  
9300 (2012 ADT) MINOR ARTERIAL  
COLLEGE AVENUE  
9200 (2012 ADT) MINOR ARTERIAL



FULL SIZE PLANS HAVE BEEN PREPARED USING STANDARD ENGINEERING SCALES. REDUCED SIZED PLANS WILL NOT CONFORM TO STANDARD SCALES. IN MAKING MEASUREMENTS ON REDUCED PLANS, THE ABOVE SCALES MAY BE USED.

**J.U.L.I.E.**  
JOINT UTILITY LOCATION INFORMATION FOR EXCAVATION  
1-800-892-0123 OR 811

**CONTRACT NO. 91460**



TOTAL LENGTH OF MULBERRY STREET IMPROVEMENT = 1,136 FEET = 0.22 MILES  
TOTAL LENGTH OF COLLEGE AVENUE IMPROVEMENT = 1,126 FEET = 0.21 MILES  
TOTAL LENGTH OF IMPROVEMENTS = 2,262 FEET = 0.43 MILES

**TOWN OF NORMAL**

APPROVED January 18, 2012  
*[Signature]*  
TOWN ENGINEER

PASSED 1/27 20 12  
*[Signature]*  
DISTRICT FIVE ENGINEER OF LOCAL ROADS & STREETS

Releasing For Bid Based on Limited Review  
January 27 20 12  
*[Signature]*  
DEPUTY DIRECTOR OF HIGHWAYS, REGION THREE ENGINEER

STATE OF ILLINOIS  
DEPARTMENT OF TRANSPORTATION

**PRINTED BY THE AUTHORITY  
OF THE STATE OF ILLINOIS**

*[Signature]*  
PROFESSIONAL ENGINEER  
CLARK DIETZ, INC.  
SHEETS 1-4, 13-14  
DATE: 1.18.2012  
LICENSE EXPIRES 11-30-13

*[Signature]*  
PROFESSIONAL ENGINEER  
CLARK DIETZ, INC.  
SHEETS 5-12  
DATE: 1/18/2012  
LICENSE EXPIRES 11-30-13

**Clark Dietz**  
ENGINEERS

125 WEST CHURCH STREET  
CHAMPAIGN, IL 61820  
PHONE : 217.373.8900  
FAX : 217.373.8923

**PROJECT GENERAL NOTES**

- WHEREVER IN THE PLANS OR SPECIFICATIONS THE TERM "STANDARD SPECIFICATIONS" IS USED IT SHALL BE UNDERSTOOD BY THE CONTRACTOR TO MEAN THE "STANDARD SPECIFICATIONS FOR ROAD AND BRIDGE CONSTRUCTION" AS PREPARED BY THE DEPARTMENT OF TRANSPORTATION OF THE STATE OF ILLINOIS AND ADOPTED ON JANUARY 1, 2012.
- WHEREVER IN THE PLANS OR SPECIFICATIONS THE TERM "STANDARD SPECIFICATIONS FOR SEWER CONSTRUCTION" IS USED IT SHALL BE UNDERSTOOD BY THE CONTRACTOR TO MEAN THE "STANDARD SPECIFICATIONS FOR WATER AND SEWER MAIN CONSTRUCTION IN ILLINOIS" AS PREPARED BY I.S.P.E., A.G.C.I., I.M.L., AND U.C.A., ADOPTED JULY 2009.
- ANY REFERENCE TO STANDARDS THROUGHOUT THE PLANS SHALL BE INTERPRETED TO BE THE LATEST STANDARDS OF THE DEPARTMENT AS SHOWN ON SHEET 3.
- IT IS THE CONTRACTOR'S RESPONSIBILITY TO ASCERTAIN EXISTING FIELD CONDITIONS BEFORE BIDDING ON THE PROJECT.
- THE CONTRACTOR WILL BE REQUIRED TO COMPLY WITH STATE REGULATIONS REGARDING AIR, WATER, AND NOISE POLLUTION.
- THE CONTRACTOR SHALL TAKE CARE NOT TO STORE OR DISPOSE OF DEBRIS OR UNSUITABLE MATERIALS WITHIN LIMITS OF THE IMPROVEMENT AND TAKE CARE TO LIMIT CONSTRUCTION TO WITHIN THE RIGHT-OF-WAY AND EASEMENT AREAS. UNNECESSARY ENCROACHMENTS ONTO PRIVATE OR PUBLIC AREAS WILL NOT BE ALLOWED.
- WHERE SECTION OR SUBSECTION MONUMENTS, BENCHMARKS, OR IRON PIPE MONUMENTS ARE ENCOUNTERED, THE ENGINEER SHALL BE NOTIFIED BEFORE SUCH MONUMENTS ARE REMOVED. THE CONTRACTOR SHALL PROTECT AND CAREFULLY PRESERVE ALL MONUMENTS UNTIL AN ILLINOIS REGISTERED LAND SURVEYOR OR AGENT HAS WITNESSED OR OTHERWISE REFERENCED THEIR LOCATION. THE CONTRACTOR WILL BE RESPONSIBLE FOR HAVING AN ILLINOIS REGISTERED LAND SURVEYOR RE-ESTABLISH ANY MONUMENTS UNNECESSARILY DESTROYED BY HIS OPERATIONS.
- THE CONTRACTOR SHALL COORDINATE CONSTRUCTION ACTIVITIES WITH UTILITY COMPANIES.
- THE CONTRACTOR SHALL BE RESPONSIBLE FOR PROTECTING UTILITY PROPERTY FROM CONSTRUCTION OPERATIONS AS OUTLINED IN ARTICLE 107.31 OF THE STANDARD SPECIFICATIONS. THE JULIE NUMBER IS 800-892-0123. A MINIMUM OF 48 HOURS ADVANCE NOTICE IS REQUIRED.
- UTILITY OWNERS:

TOWN OF NORMAL  
100 E. PHOENIX AVE.  
NORMAL, ILLINOIS 61761  
(309)-454-9574

MCLEOD USA  
102 EAST SHAFFER ST.  
FORSYTH, ILLINOIS ZIP 62535  
(217) 876-7194

NICOR GAS  
1844 FERRY ROAD  
NAPERVILLE, ILLINOIS 60563  
(888) 642-6748

AMEREN IP  
501 E. LAFAYETTE ST.  
BLOOMINGTON, ILLINOIS 61702  
(309) 823-9271

VERIZON  
2319 W. MARKET ST.  
BLOOMINGTON, ILLINOIS 61704  
(309) 663-3144

COMCAST  
1202 W. DIVISION STREET  
NORMAL, ILLINOIS 61761  
(309) 827-4396

- EXISTING PAVEMENTS, CURBS AND GUTTERS, AND SIDEWALKS IN WHICH THE TOP SURFACE IS TO BE JOINED TO THE PROPOSED WORK SHALL BE SO JOINED THROUGH SAW CUT JUNCTURES. 3/4" EXPANSION JOINT MATERIAL SHALL BE PLACED AT THESE JUNCTURES AS DIRECTED BY THE ENGINEER.
- WHERE THE PROPOSED COMBINATION CONCRETE CURB AND GUTTER JOINS THE EXISTING CURB AND GUTTER, A TRANSITION MAY BE REQUIRED IN THE SHAPE OF THE PROPOSED CURB AND GUTTER. THIS WORK SHALL BE CONSIDERED INCLUDED WITHIN THE CONTRACT UNIT PRICE FOR THE PROPOSED CURB AND GUTTER.
- THE TOWN OF NORMAL SHALL BE RESPONSIBLE FOR NOTIFYING THE PUBLIC, THE UNITED STATES POSTAL SERVICE, AND THE EMERGENCY SERVICE AGENCIES OF ALL ROAD CLOSURES AND CHANGES IN THE TRAFFIC CONTROL PLANS. THE CONTRACTOR SHALL NOTIFY THE TOWN OF NORMAL OF ALL ROAD CLOSURES AND DETOURS A MINIMUM OF 48 HOURS IN ADVANCE OF ANY ROAD CLOSURES OR CHANGES SO THAT NOTIFICATION CAN BE GIVEN.
- THE CONTRACTOR SHALL BE RESPONSIBLE FOR CLEANUP OF THE SITE PRIOR TO FINAL ACCEPTANCE IN ACCORDANCE WITH ARTICLE 104.06 OF THE STANDARD SPECIFICATIONS. THIS WORK SHALL INCLUDE CLEANING ALL DRAINAGE FACILITIES OF FOREIGN MATERIALS IN ACCORDANCE WITH ARTICLE 602.15 OF THE STANDARD SPECIFICATIONS. THIS WORK SHALL BE PERFORMED AS DIRECTED BY THE ENGINEER AND NO ADDITIONAL COMPENSATION WILL BE ALLOWED.
- THE FOLLOWING FACTORS HAVE BEEN ASSUMED IN CALCULATING PLAN QUANTITIES:

BITUMINOUS MATERIALS (PRIME COAT) - 0.05 TO 0.10 GAL/50 YD  
AGGREGATE MATERIALS - 2.05 TONS/CU/YD  
HOT-MIX ASPHALT (ALL TYPES) - 112 LBS/50 YD/IN THICK

- ALL LAYOUT OF PROPOSED ITEMS OF WORK SHALL BE COMPLETED BASED ON THE PROPOSED CENTER LINE CONTROL AND LOCAL COORDINATE SYSTEM AS SHOWN IN THE PLANS. THE ENGINEER SHALL PROVIDE ELECTRONIC DRAWINGS TO THE CONTRACTOR FOR THE PURPOSES OF ASSISTING IN THE LAYOUT. THE CONTRACTOR SHALL VERIFY ALL DIMENSIONS AND PROVIDE STAKED LAYOUT FOR REVIEW BY THE ENGINEER PRIOR TO THE START OF WORK. THE CONTRACTOR SHALL BE RESPONSIBLE FOR ALL LAYOUT AND ANY SUBSEQUENT LAYOUTS AS REQUIRED FOR THE PROJECT. ALL LAYOUT EFFORTS INCLUDING COORDINATION WITH THE ENGINEER SHALL BE CONSIDERED INCLUDED IN THE CONTRACT LUMP SUM PRICE OF CONSTRUCTION LAYOUT AND NO ADDITIONAL COMPENSATION WILL BE ALLOWED.

**LANDSCAPING GENERAL NOTES**

- THE CONTRACTOR SHALL BE RESPONSIBLE FOR BECOMING FAMILIAR WITH THE SURFACE AND SUB-SURFACE CONDITIONS PRIOR TO ANY WORK.
- ORNAMENTAL PLANTS AND MULCH THAT ARE INTENDED TO BE INSTALLED WITHIN THE PROPOSED PLANTING BEDS WILL BE FURNISHED AND PLACED BY OTHERS.
- THE CONTRACTOR SHALL PREPARE AND FINISH THE PLANTING BEDS IN ACCORDANCE WITH SECTION 211 OF THE STANDARD SPECIFICATIONS, WITH THE SPECIAL PROVISIONS, AND TO THE SATISFACTION OF THE ENGINEER.
- THE CONTRACTOR SHALL BE RESPONSIBLE FOR WEED CONTROL AND CLEAN UP AS DIRECTED BY THE ENGINEER.
- PREPARATION OF PLANTING BEDS, WEED CONTROL AND CLEAN UP WORK SHALL BE CONSIDERED INCLUDED IN THE VARIOUS CONTRACT QUANTITIES. NO ADDITIONAL COMPENSATION WILL BE ALLOWED.

**REMOVAL GENERAL NOTES**

- THE CONTRACTOR WILL BE HELD RESPONSIBLE FOR ANY UNNECESSARY DAMAGE TO TREES, SHRUBS, IRRIGATION SYSTEMS, OR LANDSCAPING AS DETERMINED BY THE ENGINEER.
- ALL EXISTING SIGNS LOCATED ON PUBLIC RIGHT-OF-WAY WHICH INTERFERE WITH THE WORK SHALL BE REMOVED BY THE TOWN OF NORMAL UNLESS DIRECTED OTHERWISE BY THE ENGINEER. THE TOWN WILL REMOVE AND REPLACE ANY SIGN INSTALLATION AT NO CHARGE TO THE CONTRACTOR PROVIDING THE CONTRACTOR PROVIDES THE ENGINEER WITH NOT LESS THAN TWO (2) WORKING DAYS NOTICE FOR SIGN REMOVAL. THE ENGINEER WILL NOTIFY THE TOWN OF NORMAL FOR SIGN REMOVAL ALONG THE SIDE ROADS. ANY CONTRACTOR OR PRIVATE PARTY REMOVING ANY SIGN WILL BE BILLED FOR THE REPLACEMENT COSTS ASSOCIATED WITH THE REINSTALLATION OF THE SIGN AND MAY BE CHARGED WITH VIOLATION OF ILLINOIS VEHICLE CODE 11-311.
- THE EXCAVATION FOR THIS PROJECT IS CLASSIFIED AS EARTH EXCAVATION IN ACCORDANCE WITH SECTION 202 OF THE STANDARD SPECIFICATIONS. THE EARTH EXCAVATION SHALL INCLUDE THE REMOVAL OF EARTH AND UNCLASSIFIED MATERIALS, AND THE TRANSPORTATION AND PLACEMENT OF SUITABLE EXCAVATED MATERIALS IN EMBANKMENTS. THE REMAINING EXCAVATION IS CLASSIFIED AS REMOVAL AND DISPOSAL OF UNSUITABLE MATERIAL, COMB. CURB & GUTTER REMOVAL, PAVEMENT REMOVAL, DRIVEWAY PAVEMENT REMOVAL, AND SIDEWALK REMOVAL.
- ABANDONED UNDERGROUND UTILITIES THAT CONFLICT WITH CONSTRUCTION SHALL BE REMOVED AND DISPOSED OUTSIDE THE LIMITS OF THE RIGHT OF WAY ACCORDING TO ARTICLE 202.03 OF THE STANDARD SPECIFICATIONS AND AS APPROVED BY THE ENGINEER. THIS WORK WILL NOT BE PAID FOR SEPARATELY BUT SHALL BE CONSIDERED INCLUDED IN THE CONTRACT UNIT PRICE FOR EARTH EXCAVATION.
- THE FINISHED EARTHWORK SHALL BE A VEGETATIVE SUSTAINING SOIL.
- ONLY EXISTING PAVEMENT, BASE COURSES AND DRIVEWAY PAVEMENTS COMPOSED OF PORTLAND CEMENT CONCRETE OR HOT-MIX ASPHALT SHALL BE MEASURED AND PAID FOR AS "PAVEMENT REMOVAL" AND "DRIVEWAY PAVEMENT REMOVAL" IN ACCORDANCE WITH SECTION 440 OF THE STANDARD SPECIFICATIONS. REMOVAL OF OTHER TYPES OF PAVEMENT COMPOSITION SUCH AS AGGREGATE OR OIL AND CHIP SHALL BE MEASURED AND PAID FOR AS "EARTH EXCAVATION" IN ACCORDANCE WITH SECTION 202 OF THE STANDARD SPECIFICATIONS.

**MAINTENANCE OF TRAFFIC GENERAL NOTES**

- TRAFFIC CONTROL AND PROTECTION SHALL BE IN ACCORDANCE WITH THE APPLICABLE PORTIONS OF THE STANDARD SPECIFICATIONS FOR ROAD AND BRIDGE CONSTRUCTION; THE APPLICABLE GUIDELINES CONTAINED IN THE MANUAL ON UNIFORM TRAFFIC CONTROL DEVICES FOR STREETS AND HIGHWAYS, STANDARDS 701301, 701601, 701701, 701801, AND 701901, AND THE SPECIAL PROVISIONS.
- TRAFFIC CONTROL AND PROTECTION WILL BE PAID FOR AT THE CONTRACT LUMP SUM PRICE FOR TRAFFIC CONTROL AND PROTECTION, (SPECIAL). THE TRAFFIC CONTROL AND PROTECTION INSTALLATION FOR EACH WORK AREA WILL NOT BE PAID FOR SEPARATELY AND ADDITIONAL TRAFFIC CONTROL DEVICES AND SIGNS MAY BE REQUIRED AS DETERMINED BY THE ENGINEER. NO ADDITIONAL COMPENSATION WILL BE ALLOWED.
- TRAFFIC CONTROL SURVEILLANCE WILL NOT BE PAID FOR SEPARATELY FOR THIS PROJECT. THE CONTRACTOR SHALL BE RESPONSIBLE FOR INSPECTING AND MAINTAINING ALL TRAFFIC CONTROL DEVICES AT ALL TIMES INCLUDING NIGHTTIME, WEEKENDS, AND ANY TIME WORKERS ARE NOT PRESENT. THIS WORK SHALL BE PERFORMED IN ACCORDANCE WITH THE RECURRING SPECIAL PROVISION LRS3. THE COST OF ALL LABOR, MATERIALS, AND EQUIPMENT REQUIRED FOR THE INSPECTION AND MAINTENANCE OF THE TRAFFIC CONTROL DEVICES SHALL BE INCLUDED IN THE LUMP SUM PRICE OF TRAFFIC CONTROL AND PROTECTION, (SPECIAL).
- THE FOLLOWING TRAFFIC CONTROL STANDARDS ARE THE MINIMUM REQUIREMENTS FOR THE TRAFFIC CONTROL FOR THIS PROJECT.

STANDARD	APPLICATION
701301	LANE CLOSURE, 2L, 2W SHORT TIME OPERATIONS
701601	URBAN LANE CLOSURE, MULTILANE, 1W
701701	URBAN LANE CLOSURE, MULTILANE INTERSECTION
701801	SIDEWALK CLOSURES WITHIN PROJECT LIMITS
701901	TRAFFIC CONTROL DEVICES

- SIDEWALKS (INCLUDING CONSTITUTION TRAIL) SHALL REMAIN OPEN AT ALL TIMES. PARTIAL CLOSURES WILL BE ALLOWED AS APPROVED BY THE ENGINEER. THE CONTRACTOR SHALL MAINTAIN A MINIMUM SIDEWALK WIDTH OF FOUR FEET (4') FOR PEDESTRIAN TRAFFIC. ACCESS TO BUSINESSES SHALL REMAIN OPEN AT ALL TIMES.
- THE CONTRACTOR SHALL PROVIDE AND INSTALL TWO (2) WEIGHTED SAND BAGS ON EACH TYPE II BARRICADE USED, (ONE WEIGHTED SAND BAG ACROSS EACH BOTTOM RAIL) AND AND A MINIMUM OF FOUR (4) WEIGHTED SAND BAGS ON EACH TYPE III BARRICADES USED.

**ELECTRICAL GENERAL NOTES**

- ALL ELECTRICAL WORK SHALL CONFORM TO THE REQUIREMENTS OF THE 2011 NATIONAL ELECTRICAL CODE, THE ILLINOIS DEPARTMENT OF TRANSPORTATION "STANDARD SPECIFICATIONS FOR ROAD AND BRIDGE CONSTRUCTION", AND ALL APPLICABLE LOCAL ORDINANCES.
- THE CONTRACTOR SHALL FURNISH ALL MATERIALS FOR A COMPLETE AND WORKABLE SYSTEM.
- THE CONTRACTOR SHALL BE RESPONSIBLE FOR OBTAINING ALL REQUIRED PERMITS AND FOR PROVIDING ALL SUPERVISION, LABOR, MATERIAL AND TOOLS FOR THE PROJECT.
- ALL LOCATIONS AND DIMENSIONS SHOWN ARE APPROXIMATE. THE CONTRACTOR SHALL FIELD VERIFY ALL ELECTRICAL EQUIPMENT LOCATIONS AND EQUIPMENT DIMENSIONS.
- ALL CONDUITS WITH WIRING SHALL BE PROVIDED WITH AN INSULATED COPPER GROUNDING CONDUCTOR SIZED IN ACCORDANCE WITH THE 2011 NATIONAL ELECTRICAL CODE.
- CONDUIT ROUTING SHOWN IS SCHEMATIC ONLY. CONTRACTOR SHALL COORDINATE EXACT ROUTING AND INSTALLATION WITH ALL OTHER SITE WORK BEING PERFORMED. COORDINATE ALL CONDUIT LOCATIONS WITH ENGINEER IN THE FIELD.
- PROVIDE PULLSTRING IN ALL CONDUITS, INCLUDING CONDUITS WITH CONDUCTORS INSTALLED.
- POLE WIRING WILL NOT BE PAID FOR SEPARATELY BUT SHALL BE INCLUDED WITH THE LUMINAIRE PER ARTICLE 821.03 OF THE STANDARD SPECIFICATIONS.
- ALL PROPOSED CONDUIT FOR ROADWAY LIGHTING SHALL BE INSTALLED 30" MINIMUM BELOW FINAL GRADE. ALL TRENCHES SHALL BE BACKFILLED IN ACCORDANCE WITH SECTION 810 OF THE STANDARD SPECIFICATIONS. THE CONTRACTOR IS RESPONSIBLE FOR REPAIR TO ALL UNDERGROUND UTILITIES DAMAGED DURING INSTALLATION OF PROPOSED CONDUITS.
- THE COST FOR ALL ELECTRICAL CONNECTIONS OF NEW CONDUCTORS TO EXISTING CONDUCTORS INSIDE EXISTING JUNCTION BOXES, LIGHT POLES, AND CONTROLLERS SHALL BE CONSIDERED INCLUDED IN THE ELECTRICAL WORK UNIT PRICES.

**SURVEY NOTES**

THE TOPOGRAPHIC SURVEY AND EXISTING RIGHT-OF-WAY CONFIGURATIONS FOR THIS PROJECT, INCLUDING THE VERTICAL DATUM, WERE PROVIDED BY THE FARNSWORTH GROUP, BLOOMINGTON, IL. SEE THE PLANS FOR THE BENCHMARK ELEVATIONS AND DESCRIPTIONS. CONTROL WILL BE PROVIDED BY THE ENGINEER.

THE UTILITIES SHOWN WERE LOCATED FROM A COMBINATION OF FIELD INFORMATION AND INFORMATION PROVIDED BY THE RESPECTIVE UTILITY COMPANIES AND THE TOWN OF NORMAL ENGINEERING DEPARTMENT. THE EXACT LOCATION OF SAID UTILITIES SHOULD BE VERIFIED IN THE FIELD PRIOR TO THE START OF CONSTRUCTION OPERATIONS.

THE COORDINATES AND ELEVATIONS ARE BASED ON THE LOCAL CONTROL MONUMENTS ESTABLISHED BY AERO-METRIC ENGINEERS, INC., SHEBOYGAN, WISCONSIN. THE CONTROL WAS ESTABLISHED IN 1995 AS A PART OF THE ORIGINAL MCLEAN COUNTY AERIAL USED FOR THE MCLEAN COUNTY GIS SYSTEM.

**EXISTING FIELD CONDITIONS**

DUE TO ONGOING DEVELOPMENT IN THE VICINITY OF THIS PROJECT, THE EXISTING TOPOGRAPHIC FEATURES MAY BE DIFFERENT FROM THE FEATURES SHOWN ON THE PLANS. THE CONTRACTOR SHALL NOTIFY THE ENGINEER OF ANY CHANGED FIELD CONDITIONS THAT ARE DISCOVERED PRIOR TO PERFORMING THE WORK. NO ADDITIONAL COMPENSATION WILL BE ALLOWED DUE TO CHANGED FIELD CONDITIONS.

FILE NAME = p:\N02400941\...Plans\sheets\ 2-general notes.dgn  
PLOT DATE = 1/18/2012 7:34:55 PM

DESIGNED - K.L.R.	REVISED -
DRAWN - K.L.R.	REVISED -
CHECKED - S.M.W.	REVISED -
DATE - 1-12	REVISED -

STATE OF ILLINOIS  
DEPARTMENT OF TRANSPORTATION

**GENERAL NOTES**

SCALE : NONE SHEET NO. 2 OF 14 SHEETS STA. TO STA.

F.A.U. RTE.	SECTION	COUNTY	TOTAL SHEETS	SHEET NO.
	10-00242-00-LT	MCLEAN	14	2
CONTRACT NO. 91460				
FED. ROAD DIST. NO. ILLINOIS FED. AID PROJECT				

**ILLINOIS HIGHWAY STANDARD DRAWINGS**

000001-06	STANDARDS SYMBOLS, ABBREVIATIONS, AND PATTERNS
606001-04	CONCRETE CURB TYPE B AND COMBINATION CONCRETE CURB AND GUTTER
701301-04	LANE CLOSURE, 2L, 2W SHORT TIME OPERATIONS
701601-07	URBAN LANE CLOSURE, MULTILANE, 1W OR 2W WITH NONTRAVERSABLE MEDIAN
701701-08	URBAN LANE CLOSURE, MULTILANE INTERSECTION
701801-05	LANE CLOSURE, MULTILANE, 1W OR 2W CROSSWALK OR SIDEWALK CLOSURE
701901-02	TRAFFIC CONTROL DEVICES
814006-02	HANDHOLES

**LEGEND**

EXISTING	PROPOSED	EXISTING	PROPOSED
—W—	WATER LINE	△	MONUMENT
—G—	GAS LINE	•	IRON PIN/PIPE FOUND
—OHE—	OVERHEAD ELECTRIC	⊠	RIGHT-OF-WAY MARKER
—UGE—	UNDERGROUND ELECTRIC	⊙	SOIL BORING
—OHT—	OVERHEAD TELEPHONE	⊠	TRAFFIC SIGNAL CONTROL BOX
—UGT—	UNDERGROUND TELEPHONE	⊠	TRAFFIC SIGNAL POST
—CATV—	CABLE TELEVISION	⊠	TRAFFIC SIGNAL MAST ARM
—COM—	COMMUNICATION LINE	⊙	PEDESTRIAL PUSH BUTTON POST
—FO—	FIBER OPTIC LINE	⊠	TRAFFIC SIGNAL/LIGHTING HANDHOLE
—STM—	STEAM LINE	⊙	TRAFFIC SIGNAL JUNCTION BOX
—	FORCE MAIN	⊠	RR CROSSING GATE
—)	SANITARY SEWER	⊠	RR FLASHING SIGNAL
—>	STORM SEWER	⊠	RR CROSSBUCK
—+>	STORM SEWER WATER MAIN QUALITY	⊠	STREET SIGN
⊠	INLET OR CATCH BASIN	⊠	TRAFFIC SIGN
⊠	MANHOLE	⊠	DELINEATOR
⊠	UTILITY WARNING SIGN	⊠	PARKING LOT LIGHT
⊠	SERVICE BOX SHUTOFF	⊠	YARD LIGHT
⊠	VALVE	⊠	MAILBOX
⊠	WATER MANHOLE	⊠	PARKING METER
⊠	WATER METER	⊠	IRRIGATION CONTROL BOX
⊠	FIRE HYDRANT	⊠	IRRIGATION HEAD
⊠	GAS METER	⊠	TANK FILLER CAP
⊠	GAS REGULATOR	⊠	INSPECTION WELL
⊠	GAS VENT PIPE	⊠	CLEANOUT
⊠	ELECTRIC MANHOLE	⊠	DOWNSPOUT
⊠	ELECTRIC METER	⊠	BOLLARD
⊠	ELECTRIC PEDESTAL	⊠	FENCE POST
⊠	ELECTRIC JUNCTION BOX	⊠	GATE POST
⊠	POWER POLE	⊠	FLAG POLE
⊠	POWER POLE W/LIGHT	⊠	FLOOD LIGHT
⊠	POWER POLE W/TRANSFORMER	⊠	TREE STUMP
⊠	ROADWAY LIGHT CONTROLLER	⊠	BUSH
⊠	ROADWAY STREET LIGHT	⊠	CONIFEROUS TREE
⊠	ORNAMENTAL STREET LIGHT	⊠	DECIDUOUS TREE
⊠	GUY POLE	⊠	PROPERTY PARCEL NUMBER
⊠	GUY WIRE	⊠	HOUSE ADDRESS NUMBER
⊠	TELEPHONE POLE	⊠	
⊠	TELEPHONE MANHOLE	⊠	
⊠	TELEPHONE PEDESTAL	⊠	
⊠	PEDESTAL PAY PHONE	⊠	
⊠	PHONE BOOTH	⊠	

SEE LIGHTING PLAN SHEETS FOR LEGEND ITEMS SPECIFIC TO THE RESPECTIVE SHEETS

# SUMMARY OF QUANTITIES

CODE NO.	ITEM	CONSTRUCTION CODE		0031		100% LOCAL QTY
		UNIT	TOTAL QUANTITY	50% ITEP 50% LOCAL QTY	80% ITEP 20% LOCAL QTY	
20101000	TEMPORARY FENCE	FOOT	100		100	
20200100	EARTH EXCAVATION	CU YD	265		265	
20201200	REMOVAL AND DISPOSAL OF UNSUITABLE MATERIAL	CU YD	25		25	
21101685	TOPSOIL FURNISH AND PLACE, 24"	SO YD	262		262	
25000400	NITROGEN FERTILIZER NUTRIENT	POUND	4	3	1	
25000500	PHOSPHORUS FERTILIZER NUTRIENT	POUND	4	3	1	
25000600	POTASSIUM FERTILIZER NUTRIENT	POUND	4	3	1	
25200110	SODDING, SALT TOLERANT	SO YD	308	288	20	
25200200	SUPPLEMENTAL WATERING	UNIT	4	3	1	
28000510	INLET FILTERS	EACH	11		11	
35101800	AGGREGATE BASE COURSE, TYPE B 6"	SO YD	87		87	
40201000	AGGREGATE FOR TEMPORARY ACCESS	TON	20		20	
40600100	BITUMINOUS MATERIALS (PRIME COAT)	GALLON	45		25	20
40600635	LEVELING BINDER (MACHINE METHOD), N70	TON	40			40
40603315	HOT-MIX ASPHALT SURFACE COURSE, MIX "C", N70	TON	55		30	25
42300400	PORTLAND CEMENT CONCRETE DRIVEWAY PAVEMENT, 8 INCH	SO YD	71		71	
42400300	PORTLAND CEMENT CONCRETE SIDEWALK 6 INCH	SO FT	2,578	89	2,489	
44000100	PAVEMENT REMOVAL	SO YD	152	6	146	
44000200	DRIVEWAY PAVEMENT REMOVAL	SO YD	119		119	
44000500	COMBINATION CURB AND GUTTER REMOVAL	FOOT	145		145	
44000600	SIDEWALK REMOVAL	SO FT	1,988	89	1,899	
60600605	CONCRETE CURB, TYPE B	FOOT	627		627	
60604400	COMBINATION CONCRETE CURB AND GUTTER, TYPE B-6.18	FOOT	145		145	
67100100	MOBILIZATION	L SUM	1	0.6	0.3	0.1

• SEE SPECIAL PROVISIONS

CODE NO.	ITEM	CONSTRUCTION CODE		0031		100% LOCAL QTY
		UNIT	TOTAL QUANTITY	50% ITEP 50% LOCAL QTY	80% ITEP 20% LOCAL QTY	
△ 81028350	UNDERGROUND CONDUIT, PVC, 2" DIA.	FOOT	3,120	3,120		
△ 81028370	UNDERGROUND CONDUIT, PVC, 3" DIA.	FOOT	70	70		
△ 81028390	UNDERGROUND CONDUIT, PVC, 4" DIA.	FOOT	500	500		
△ 81400700	HANDHOLE, PORTLAND CEMENT CONCRETE	EACH	3	3		
△ 81400730	HANDHOLE, COMPOSITE CONCRETE	EACH	2	2		
△ 81702110	ELECTRIC CABLE IN CONDUIT, 600V (XLP-TYPE USE) 1/C NO. 10	FOOT	6,654	6,654		
△ 81702120	ELECTRIC CABLE IN CONDUIT, 600V (XLP-TYPE USE) 1/C NO. 8	FOOT	3,639	3,639		
△ 84200500	REMOVAL OF LIGHTING UNIT, SALVAGE	EACH	2	2		
△ 84200804	REMOVAL OF POLE FOUNDATION	EACH	2	2		
△ X0326654	ORNAMENTAL LIGHT UNIT, COMPLETE	EACH	18	18		
• X4401198	HOT-MIX ASPHALT SURFACE REMOVAL, VARIABLE DEPTH	SO YD	453		254	199
• X7010216	TRAFFIC CONTROL AND PROTECTION, (SPECIAL)	L SUM	1	0.6	0.3	0.1
△ X8100863	INTERCEPT EXISTING CONDUIT	EACH	2	2		
△ X8360120	LIGHT POLE FOUNDATION, SPECIAL	EACH	17	17		
△ X8950130	MODIFY EXISTING LIGHTING CONTROLLER	EACH	1	1		
• XX003219	UNIT PAVERS	SO FT	778		778	
△ XX007797	LUMINAIRE (SPECIAL)	EACH	34	34		
• Z0013798	CONSTRUCTION LAYOUT	L SUM	1	0.6	0.3	0.1

• SEE SPECIAL PROVISIONS

△ SPECIALTY ITEMS

FILE NAME = p:\N0240094\...Plans\sheets\ 4-summary of quantities.dgn  
 PLOT DATE = 1/18/2012 7:35:07 PM

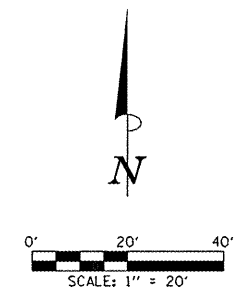
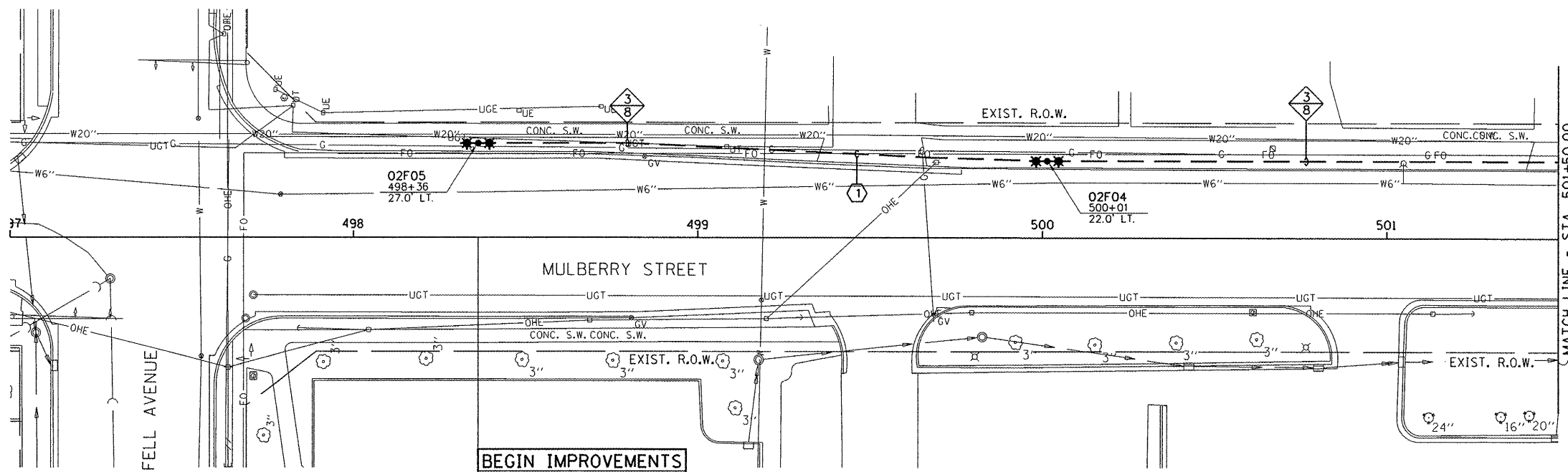
DESIGNED - K.L.R.      REVISED -  
 DRAWN - K.L.R.        REVISED -  
 CHECKED - S.M.W.      REVISED -  
 DATE - 1-12            REVISED -

STATE OF ILLINOIS  
DEPARTMENT OF TRANSPORTATION

## SUMMARY OF QUANTITIES

SCALE : NONE      SHEET NO. 4 OF 14 SHEETS      STA.      TO STA.

F.A.U. RTE.	SECTION	COUNTY	TOTAL SHEETS	SHEET NO.
	10-00242-00-LT	MCLEAN	14	4
FED. ROAD DIST. NO.			ILLINOIS FED. AID PROJECT	
			CONTRACT NO. 91460	

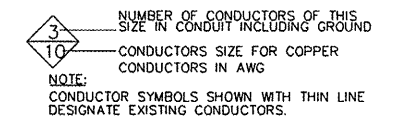


**BEGIN IMPROVEMENTS**  
**MULBERRY ST.**  
**STA. 498+36.00**  
 (MATCH EXISTING)  
 N. 1400829.58  
 E. 802523.41

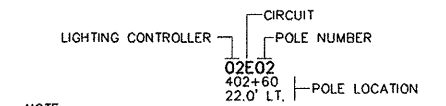
**KEY NOTES THIS SHEET**

- ① PROVIDE CONDUIT UNDER EXISTING PAVEMENT USING DIRECTIONAL BORING. BORE SHALL BE MEASURED TO 2 FEET PAST PAVEMENT ON EACH SIDE. LOCATE ALL EXISTING UTILITIES IN AREA PRIOR TO BEGINNING. FOR PROTECTION OF EXISTING UNDERGROUND UTILITIES ALL EXCAVATION AROUND THEM SHALL BE DONE BY HAND.
- ② CONTRACTOR WILL PROVIDE (2) 4" SCHEDULE 40 PVC CONDUITS 36" TO 42" UNDER EXISTING PAVEMENT USING DIRECTIONAL BORING FROM JUNCTION BOX LABELED 281-10 APPROXIMATELY 80 FEET TO THE NORTHWEST, AS SHOWN. AMEREN WILL PROVIDE ACCESS TO JUNCTION BOX 281-10, HOWEVER, THE CONTRACTOR WILL BE RESPONSIBLE FOR INSTALLING THE SWEEP INTO THE BOX. THE SWEEP AT EACH END SHALL BE SCHED. 80 PVC WITH A MINIMUM BENDING RADIUS OF 36". THE ENDS OF THE CONDUITS SHALL HAVE BUSHINGS INSTALLED. THE PULL STRING IN THE CONDUITS SHALL BE RATED AT 2600# OF TENSION. CONTRACTOR SHALL VERIFY ALL DISTANCES AT SITE PRIOR TO BIDDING.

**CONDUCTOR SYMBOL SCHEME**

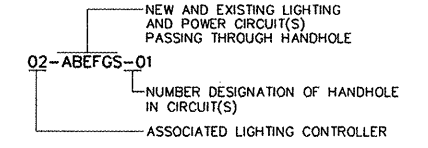


**CIRCUIT DESIGNATION SCHEME**



NOTE:  
 PROVIDE PERMANENT STICKER ON EACH LIGHT POLE INDICATING THE LIGHTING CONTROLLER, CIRCUIT AND POLE NUMBER.

**HANDHOLE NAMING SCHEME**



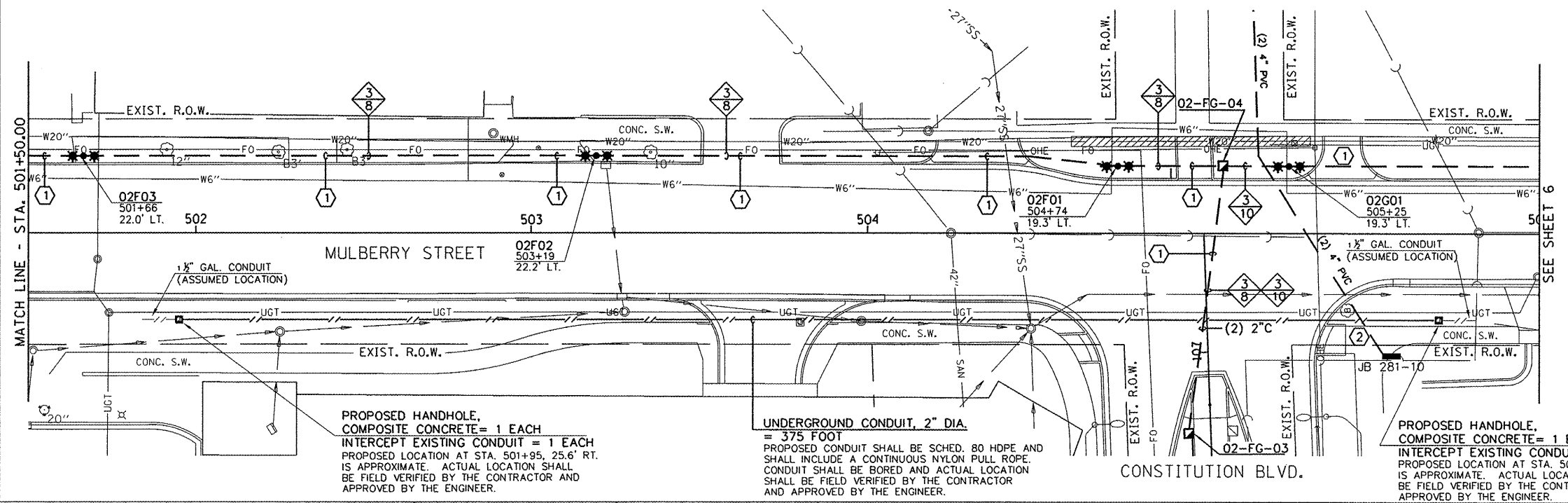
**STREET LIGHTING LEGEND**

EXISTING	PROPOSED	DESCRIPTION
<input type="checkbox"/>	<input checked="" type="checkbox"/>	PORTLAND CEMENT CONCRETE HANDHOLE.
<input checked="" type="checkbox"/>	<input type="checkbox"/>	DOUBLE PORTLAND CEMENT CONCRETE HANDHOLE.
<input type="checkbox"/>	<input checked="" type="checkbox"/>	GULFBOX JUNCTION, COMPOSITE CONCRETE.
<input type="checkbox"/>	<input checked="" type="checkbox"/>	TRAFFIC SIGNAL CONTROLLER CABINET.
<input type="checkbox"/>	<input checked="" type="checkbox"/>	LIGHTING CONTROLLER (# = CONTROLLER NUMBER)
<input type="checkbox"/>	<input checked="" type="checkbox"/>	LIGHTING ASSEMBLY MOUNTED ON SIGNAL POLE.
<input type="checkbox"/>	<input checked="" type="checkbox"/>	LIGHTING ASSEMBLY, DOUBLE ARMS WITH LUMINAIRES, PER SPECIAL PROVISIONS, MOUNTED ON 26' POLE, WITH CONCRETE FOUNDATION.
<input type="checkbox"/>	<input checked="" type="checkbox"/>	PVC CONDUIT (SCH. 80) IN TRENCH OR BORED AS NOTED (1 2-INCH UNLESS NOTED OTHERWISE) SEE CONDUIT/CABLE SCHEDULE FOR QUANTITIES

**CONDUIT ROUTING NOTE**

ALL CONDUIT SHOWN ARE DIAGRAMMATIC ONLY. ALL CONDUIT SHALL BE TRENCHED OR BORED THROUGH PATH OF LEAST RESISTANCE. COORDINATE THE INSTALLATION WITH UTILITIES, OTHER TRADES AND THE CITY.

ALL CONDUITS SHALL BE PROVIDED WITH AN INTEGRAL PULL STRING. THE PULL STRING SHALL BE INCLUDED IN THE COST OF THE CONDUITS AND NO ADDITIONAL COMPENSATION WILL BE ALLOWED.



PROPOSED HANDHOLE, COMPOSITE CONCRETE = 1 EACH  
 INTERCEPT EXISTING CONDUIT = 1 EACH  
 PROPOSED LOCATION AT STA. 501+95, 25.6' RT. IS APPROXIMATE. ACTUAL LOCATION SHALL BE FIELD VERIFIED BY THE CONTRACTOR AND APPROVED BY THE ENGINEER.

UNDERGROUND CONDUIT, 2" DIA. = 375 FOOT  
 PROPOSED CONDUIT SHALL BE SCHED. 80 HDPE AND SHALL INCLUDE A CONTINUOUS NYLON PULL ROPE. CONDUIT SHALL BE BORED AND ACTUAL LOCATION SHALL BE FIELD VERIFIED BY THE CONTRACTOR AND APPROVED BY THE ENGINEER.

PROPOSED HANDHOLE, COMPOSITE CONCRETE = 1 EACH  
 INTERCEPT EXISTING CONDUIT = 1 EACH  
 PROPOSED LOCATION AT STA. 505+70, 25.6' RT. IS APPROXIMATE. ACTUAL LOCATION SHALL BE FIELD VERIFIED BY THE CONTRACTOR AND APPROVED BY THE ENGINEER.

FILE NAME = p:\m0240094\...Plans\sheet\ 5-lighting.dgn  
 PLOT DATE = 1/18/2012 7:35:13 PM

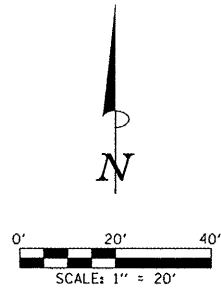
DESIGNED - M.P.	REVISED -
DRAWN - M.P.	REVISED -
CHECKED - S.M.W.	REVISED -
DATE - 1-12	REVISED -

STATE OF ILLINOIS  
 DEPARTMENT OF TRANSPORTATION

LIGHTING PLANS - MULBERRY STREET

SCALE: 1"=20' SHEET NO. 5 OF 14 SHEETS STA. TO STA.

F.A.U. RTE.	SECTION	COUNTY	TOTAL SHEETS	SHEET NO.
	10-00242-00-LT	MCCLEAN	14	5
CONTRACT NO. 91460				
FED. ROAD DIST. NO. ILLINOIS FED. AID PROJECT				



**KEY NOTES THIS SHEET**

- ① PROVIDE CONDUIT UNDER EXISTING PAVEMENT USING DIRECTIONAL BORING. BORE SHALL BE MEASURED TO 2 FEET PAST PAVEMENT ON EACH SIDE. LOCATE ALL EXISTING UTILITIES IN AREA PRIOR TO BEGINNING. FOR PROTECTION OF EXISTING UNDERGROUND UTILITIES ALL EXCAVATION AROUND THEM SHALL BE DONE BY HAND.
- ② CONTRACTOR WILL PROVIDE (2) 4" SCHEDULE 40 PVC CONDUITS 36" TO 42" UNDER EXISTING PAVEMENT USING DIRECTIONAL BORING FROM JUNCTION BOX LABELED 281-10 APPROXIMATELY 80 FEET TO THE NORTHWEST, AS SHOWN. AMEREN WILL PROVIDE ACCESS TO JUNCTION BOX 281-10, HOWEVER, THE CONTRACTOR WILL BE RESPONSIBLE FOR INSTALLING THE SWEEP INTO THE BOX. THE SWEEP AT EACH END SHALL BE SCHED. 80 PVC WITH A MINIMUM BENDING RADIUS OF 36". THE ENDS OF THE CONDUITS SHALL HAVE BUSHINGS INSTALLED. THE PULL STRING IN THE CONDUITS SHALL BE RATED AT 2600# OF TENSION. CONTRACTOR SHALL VERIFY ALL DISTANCES AT SITE PRIOR TO BIDDING.
- ③ THE CONTRACTOR SHALL EXTEND THE CONDUIT APPROXIMATELY 170 FEET NORTH TO THE PROPOSED UTILITY TRANSFORMER LOCATION ADJACENT TO THE POLE ON THE TRAIL (NOT SHOWN). THE SWEEP AT EACH END SHALL BE SCHED. 80 PVC WITH A MINIMUM BENDING RADIUS OF 36". THE PULL STRING IN THE CONDUITS SHALL BE RATED AT 2600# OF TENSION. CONTRACTOR SHALL VERIFY ALL DISTANCES AT SITE PRIOR TO BIDDING.
- ④ AT THE UTILITY TRANSFORMER LOCATION, THERE ARE SINGLE PHASE OVERHEAD SERVICES TO BE RE-FED BY AMEREN FROM THIS PADMOUNTED TRANSFORMER. THE CONTRACTOR SHALL INSTALL A SINGLE 3" CONDUIT FROM THE NEW SINGLE PHASE PADMOUNTED TRANSFORMER TO AN EXISTING WOOD POLE, LOCATED APPROXIMATELY 35' EAST OF THE PROPOSED PADMOUNTED TRANSFORMER LOCATION. THE CONDUIT IS REQUIRED TO BE A MINIMUM OF SCHEDULE 40 PVC BELOW GRADE, WITH 36" SCHEDULE 80 PVC SWEEPS AT EACH END. AT THE EXISTING POLE, THE CONTRACTOR SHALL SUPPLY (3) 3" @ 10' SCHEDULE 80 PVC SECTIONS FOR AMEREN TO INSTALL UP THE POLE TO USE AS A RISER. CONTRACTOR SHALL VERIFY ALL DISTANCES AT SITE PRIOR TO BIDDING.
- ⑤ CONTRACTOR WILL PROVIDE (2) 4" SCHEDULE 40 PVC CONDUITS FROM PROPOSED UTILITY TRANSFORMER TO THE JUNCTION NORTH OF THAT LOCATION. CONTRACTOR SHALL VERIFY ALL DISTANCES AT SITE PRIOR TO BIDDING.

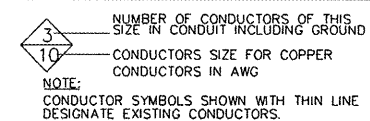
**STREET LIGHTING LEGEND**

EXISTING	PROPOSED	DESCRIPTION
☐	■	PORTLAND CEMENT CONCRETE HANDHOLE.
☐	▣	DOUBLE PORTLAND CEMENT CONCRETE HANDHOLE.
○	○	GULFBOX JUNCTION, COMPOSITE CONCRETE.
☒	☒	TRAFFIC SIGNAL CONTROLLER CABINET.
☒	☒	LIGHTING CONTROLLER (# = CONTROLLER NUMBER)
○	○	LIGHTING ASSEMBLY MOUNTED ON SIGNAL POLE.
	***	LIGHTING ASSEMBLY, DOUBLE ARMS WITH LUMINAIRES, PER SPECIAL PROVISIONS, MOUNTED ON 26' POLE, WITH CONCRETE FOUNDATION.
---	---	PVC CONDUIT (SCH. 80) IN TRENCH OR BORED AS NOTED (1 2-INCH UNLESS NOTED OTHERWISE) SEE CONDUIT/CABLE SCHEDULE FOR QUANTITIES

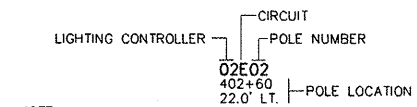
**CONDUIT ROUTING NOTE**

ALL CONDUIT SHOWN ARE DIAGRAMMATIC ONLY. ALL CONDUIT SHALL BE TRENCHED OR BORED THROUGH PATH OF LEAST RESISTANCE. COORDINATE THE INSTALLATION WITH UTILITIES, OTHER TRADES AND THE CITY.  
 ALL CONDUITS SHALL BE PROVIDED WITH AN INTEGRAL PULL STRING. THE PULL STRING SHALL BE INCLUDED IN THE COST OF THE CONDUITS AND NO ADDITIONAL COMPENSATION WILL BE ALLOWED.

**CONDUCTOR SYMBOL SCHEME**

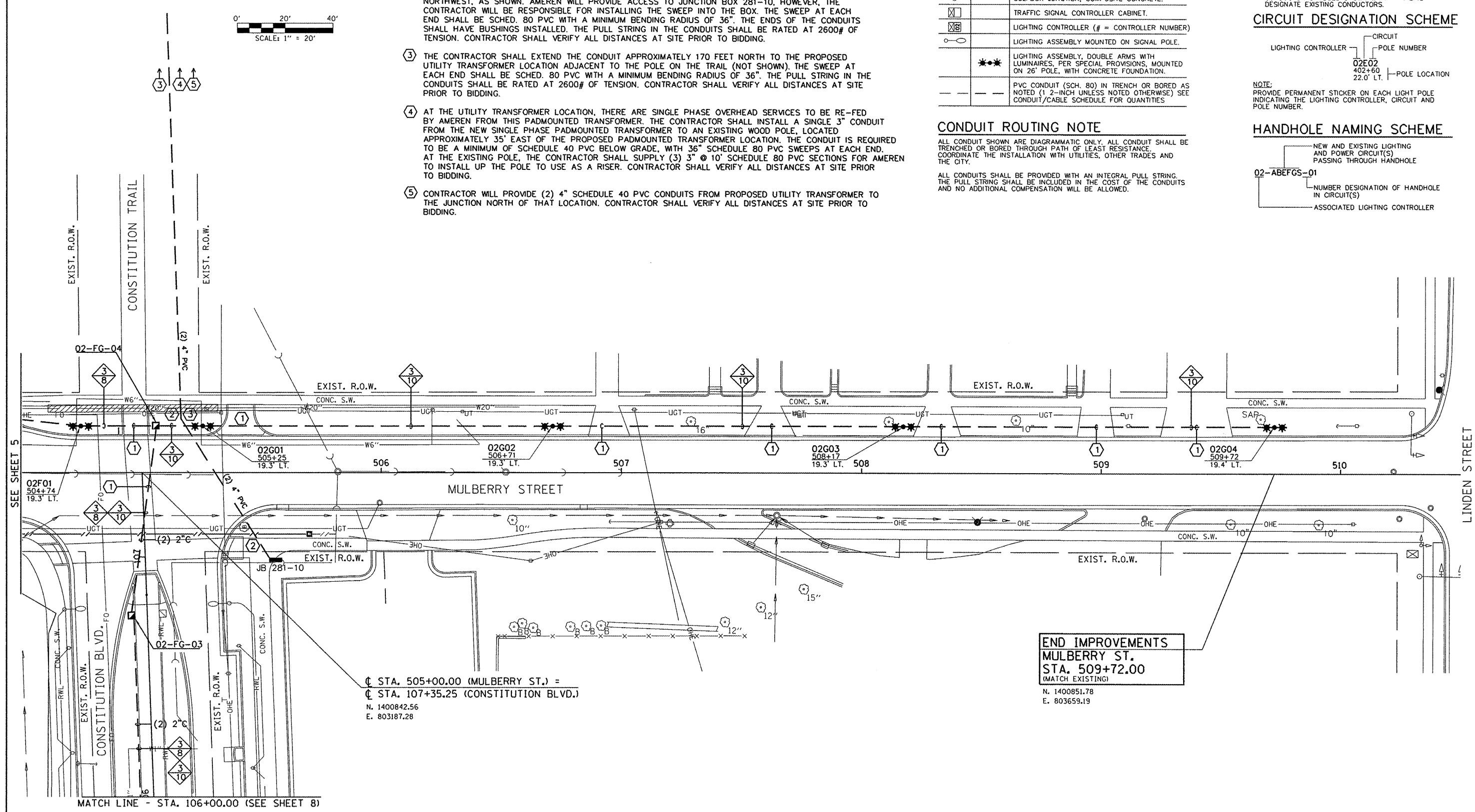
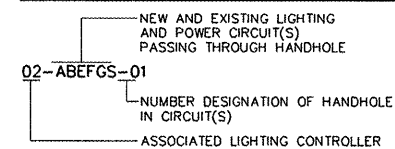


**CIRCUIT DESIGNATION SCHEME**

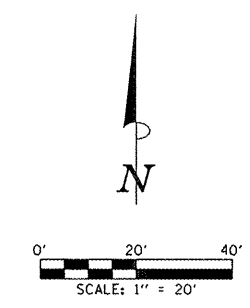
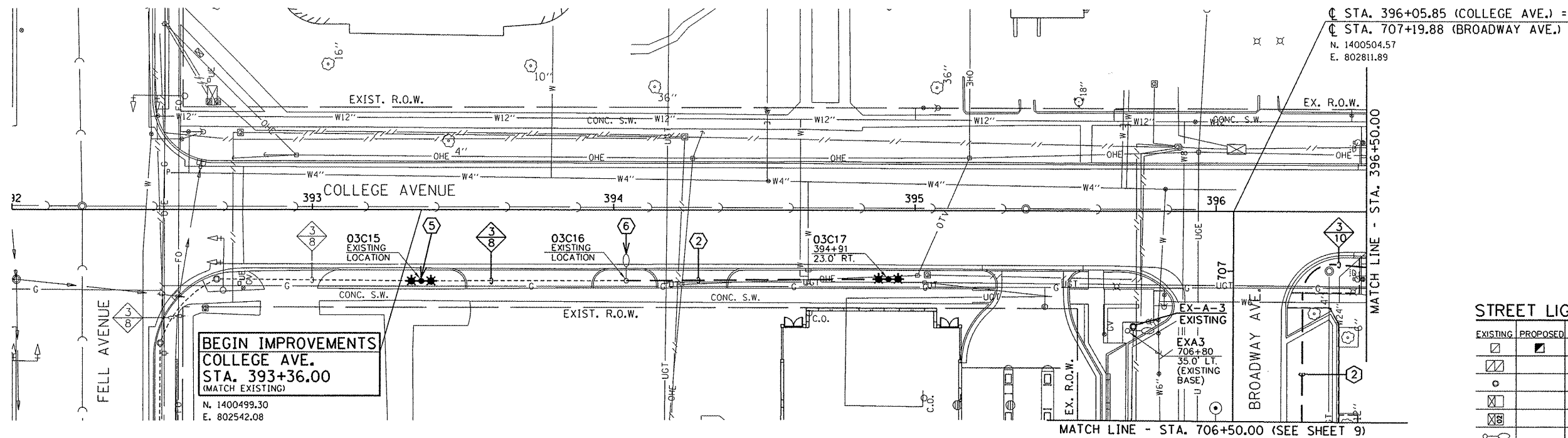


NOTE: PROVIDE PERMANENT STICKER ON EACH LIGHT POLE INDICATING THE LIGHTING CONTROLLER, CIRCUIT AND POLE NUMBER.

**HANDHOLE NAMING SCHEME**



**END IMPROVEMENTS**  
 MULBERRY ST.  
 STA. 509+72.00  
 (MATCH EXISTING)  
 N. 1400851.78  
 E. 803659.19



**STREET LIGHTING LEGEND**

EXISTING	PROPOSED	DESCRIPTION
□	■	PORTLAND CEMENT CONCRETE HANDHOLE.
□	□	DOUBLE PORTLAND CEMENT CONCRETE HANDHOLE.
○	○	GULFBOX JUNCTION, COMPOSITE CONCRETE.
□	□	TRAFFIC SIGNAL CONTROLLER CABINET.
□	□	LIGHTING CONTROLLER (# = CONTROLLER NUMBER)
○	○	LIGHTING ASSEMBLY MOUNTED ON SIGNAL POLE.
	***	LIGHTING ASSEMBLY, DOUBLE ARMS WITH LUMINAIRES, PER SPECIAL PROVISIONS, MOUNTED ON 26' POLE, WITH CONCRETE FOUNDATION.
---	---	PVC CONDUIT (SCH. 80) IN TRENCH OR BORED AS NOTED (1 2-INCH UNLESS NOTED OTHERWISE) SEE CONDUIT/CABLE SCHEDULE FOR QUANTITIES

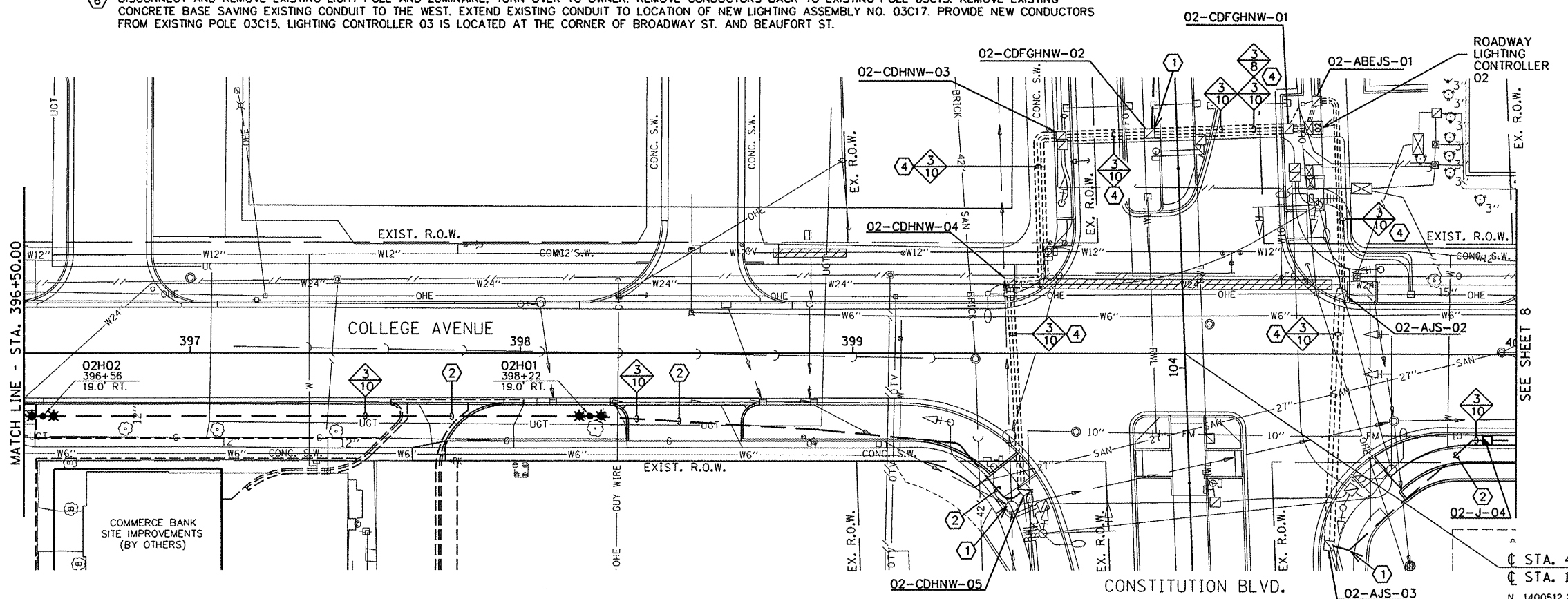
**KEY NOTES THIS SHEET**

- 1 DIG ADJACENT TO EXISTING HAND HOLE TO ALLOW FOR CORE DRILLING OF NEW CONDUIT INTO HAND HOLE. FOR PROTECTION OF EXISTING UNDERGROUND UTILITIES ALL EXCAVATION AROUND HAND HOLES SHALL BE DONE BY HAND. REMOVE AND REPLACE SIDEWALK SECTION(S) AS REQUIRED.
- 2 PROVIDE CONDUIT UNDER EXISTING PAVEMENT USING DIRECTIONAL BORING. BORE SHALL BE MEASURED TO 2 FEET PAST PAVEMENT ON EACH SIDE. LOCATE ALL EXISTING UTILITIES IN AREA PRIOR TO BEGINNING. FOR PROTECTION OF EXISTING UNDERGROUND UTILITIES ALL EXCAVATION AROUND THEM SHALL BE DONE BY HAND.
- 3 RESERVED.
- 4 PULL CIRCUIT(S) THROUGH EXISTING SPARE CONDUIT.
- 5 DISCONNECT AND REMOVE EXISTING LIGHT POLE AND LUMINAIRE, TURN OVER TO OWNER. PROVIDE NEW LIGHTING ASSEMBLY DOUBLE ARMS WITH LUMINAIRES ON EXISTING BASE PER SPECIFICATIONS.
- 6 DISCONNECT AND REMOVE EXISTING LIGHT POLE AND LUMINAIRE, TURN OVER TO OWNER. REMOVE CONDUCTORS BACK TO EXISTING POLE 03C15. REMOVE EXISTING CONCRETE BASE SAVING EXISTING CONDUIT TO THE WEST. EXTEND EXISTING CONDUIT TO LOCATION OF NEW LIGHTING ASSEMBLY NO. 03C17. PROVIDE NEW CONDUCTORS FROM EXISTING POLE 03C15. LIGHTING CONTROLLER 03 IS LOCATED AT THE CORNER OF BROADWAY ST. AND BEAUFORT ST.

**CONDUIT ROUTING NOTE**

ALL CONDUIT SHOWN ARE DIAGRAMMATIC ONLY. ALL CONDUIT SHALL BE TRENCHED OR BORED THROUGH PATH OF LEAST RESISTANCE. COORDINATE THE INSTALLATION WITH UTILITIES, OTHER TRADES AND THE CITY.

ALL CONDUITS SHALL BE PROVIDED WITH AN INTEGRAL PULL STRING. THE PULL STRING SHALL BE INCLUDED IN THE COST OF THE CONDUITS AND NO ADDITIONAL COMPENSATION WILL BE ALLOWED.



**CONDUCTOR SYMBOL SCHEME**

3 NUMBER OF CONDUCTORS OF THIS SIZE IN CONDUIT INCLUDING GROUND  
 10 CONDUCTORS SIZE FOR COPPER CONDUCTORS IN AWG  
 NOTE: CONDUCTOR SYMBOLS SHOWN WITH THIN LINE DESIGNATE EXISTING CONDUCTORS.

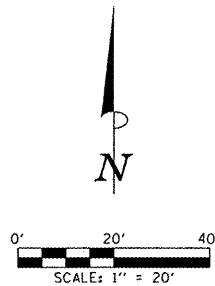
**CIRCUIT DESIGNATION SCHEME**

LIGHTING CONTROLLER — CIRCUIT  
 — POLE NUMBER  
 02E02  
 402+60 — POLE LOCATION  
 22.0' LT.  
 NOTE: PROVIDE PERMANENT STICKER ON EACH LIGHT POLE INDICATING THE LIGHTING CONTROLLER, CIRCUIT AND POLE NUMBER.

**HANDHOLE NAMING SCHEME**

NEW AND EXISTING LIGHTING AND POWER CIRCUIT(S) PASSING THROUGH HANDHOLE  
 02-ABEFGS-01  
 NUMBER DESIGNATION OF HANDHOLE IN CIRCUIT(S)  
 ASSOCIATED LIGHTING CONTROLLER

STA. 400+00.00 (COLLEGE AVE.) =  
 STA. 104+04.20 (CONSTITUTION BLVD.)  
 N. 1400512.28  
 E. 803205.96



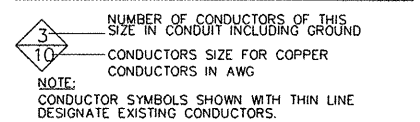
**KEYED NOTES THIS SHEET**

- ① DIG ADJACENT TO EXISTING HAND HOLE TO ALLOW FOR CORE DRILLING OF NEW CONDUIT INTO HAND HOLE. FOR PROTECTION OF EXISTING UNDERGROUND UTILITIES ALL EXCAVATION AROUND HAND HOLES SHALL BE DONE BY HAND. REMOVE AND REPLACE SIDEWALK SECTION(S) AS REQUIRED.
- ② PROVIDE CONDUIT UNDER EXISTING PAVEMENT USING DIRECTIONAL BORING. BORE SHALL BE MEASURED TO 2 FEET PAST PAVEMENT ON EACH SIDE. LOCATE ALL EXISTING UTILITIES IN AREA PRIOR TO BEGINNING. FOR PROTECTION OF EXISTING UNDERGROUND UTILITIES ALL EXCAVATION AROUND THEM SHALL BE DONE BY HAND.
- ③ SAW CUT AND REMOVE SIDEWALK SECTION TO ACCOMMODATE LIGHT POLE BASE AND ADJACENT SECTION TO THE WEST TO ALLOW FOR CONNECTION OF CONDUIT BORED UNDER DRIVE AND SIDEWALK FROM PREVIOUS LIGHT POLE TO THE WEST. REPLACE SIDEWALK TO MATCH EXISTING.
- ④ PULL CIRCUIT(S) THROUGH EXISTING SPARE CONDUIT.

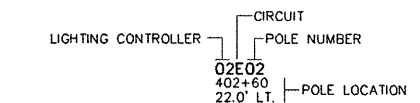
**STREET LIGHTING LEGEND**

EXISTING	PROPOSED	DESCRIPTION
☐	☑	PORTLAND CEMENT CONCRETE HANDHOLE.
☐	☑	DOUBLE PORTLAND CEMENT CONCRETE HANDHOLE.
○	○	GULFBOX JUNCTION, COMPOSITE CONCRETE.
☒	☒	TRAFFIC SIGNAL CONTROLLER CABINET.
☒	☒	LIGHTING CONTROLLER (# = CONTROLLER NUMBER)
○	○	LIGHTING ASSEMBLY MOUNTED ON SIGNAL POLE.
○	○	LIGHTING ASSEMBLY, DOUBLE ARMS WITH LUMINAIRES, PER SPECIAL PROVISIONS, MOUNTED ON 26' POLE, WITH CONCRETE FOUNDATION.
---	---	PVC CONDUIT (SCH. 80) IN TRENCH OR BORED AS NOTED (1/2-INCH UNLESS NOTED OTHERWISE) SEE CONDUIT/CABLE SCHEDULE FOR QUANTITIES

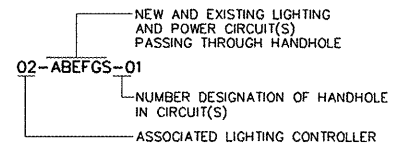
**CONDUCTOR SYMBOL SCHEME**



**CIRCUIT DESIGNATION SCHEME**



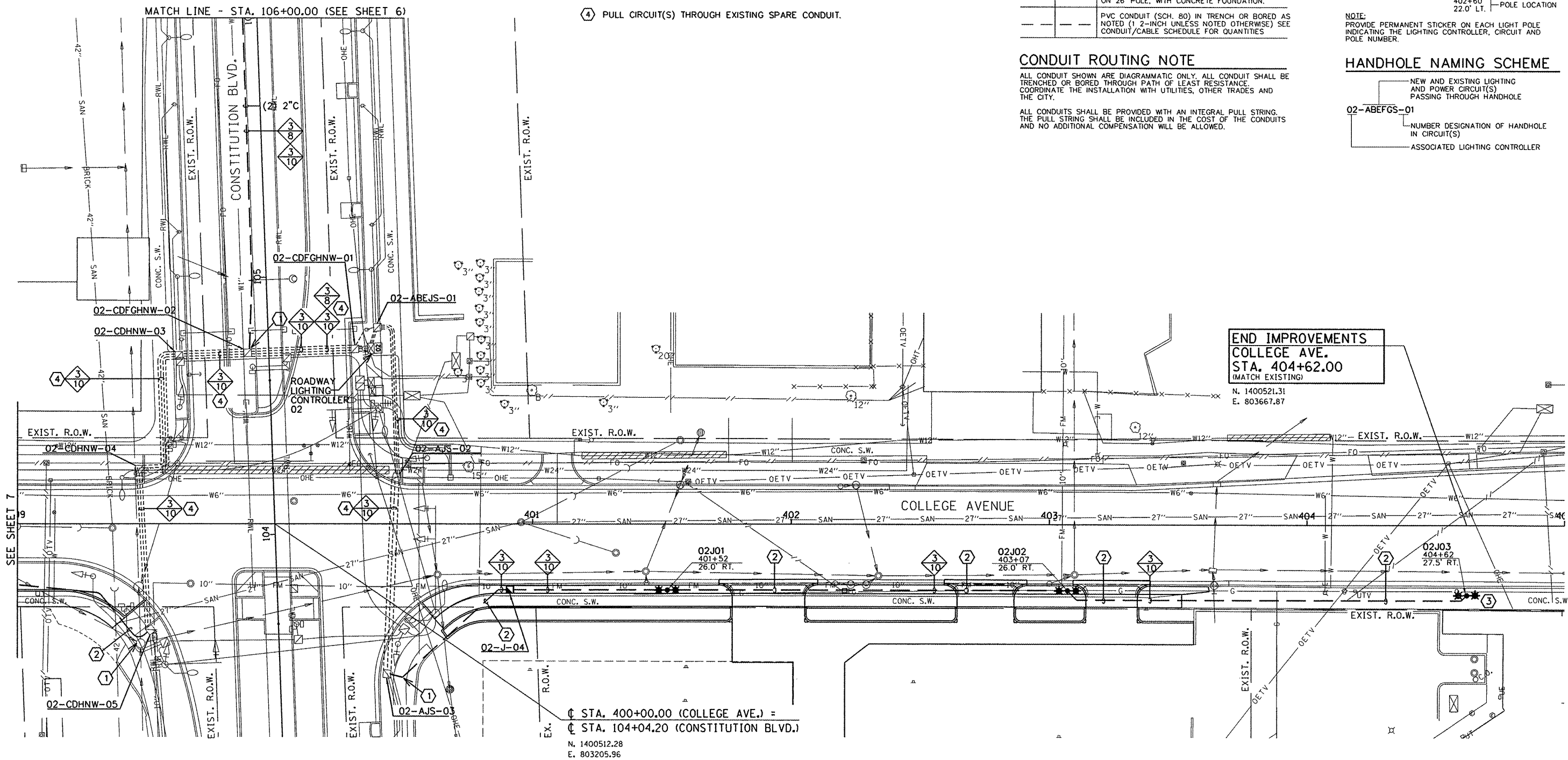
**HANDHOLE NAMING SCHEME**



**CONDUIT ROUTING NOTE**

ALL CONDUIT SHOWN ARE DIAGRAMMATIC ONLY. ALL CONDUIT SHALL BE TRENCHED OR BORED THROUGH PATH OF LEAST RESISTANCE. COORDINATE THE INSTALLATION WITH UTILITIES, OTHER TRADES AND THE CITY.

ALL CONDUITS SHALL BE PROVIDED WITH AN INTEGRAL PULL STRING. THE PULL STRING SHALL BE INCLUDED IN THE COST OF THE CONDUITS AND NO ADDITIONAL COMPENSATION WILL BE ALLOWED.



SEE SHEET 7

DESIGNED - M.P.	REVISED -
DRAWN - M.P.	REVISED -
CHECKED - S.M.W.	REVISED -
DATE - 1-12	REVISED -

STATE OF ILLINOIS  
DEPARTMENT OF TRANSPORTATION

LIGHTING PLANS - COLLEGE AVENUE

F.A.U. RTE.	SECTION	COUNTY	TOTAL SHEETS	SHEET NO.
	10-00242-00-LT	MCLEAN	14	8
CONTRACT NO. 91460				
FED. ROAD DIST. NO. ILLINOIS FED. AID PROJECT				

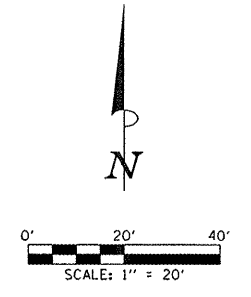
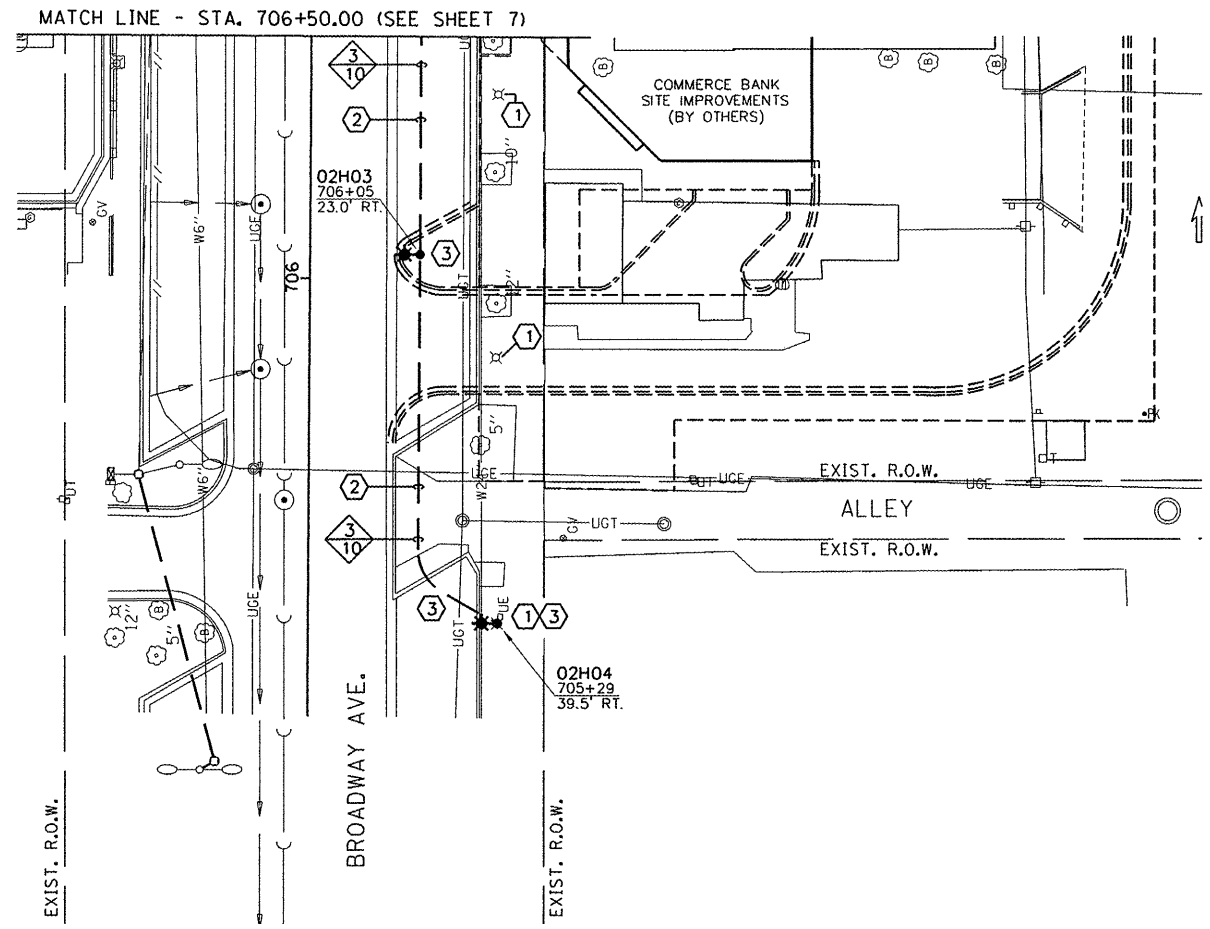
FILE NAME = p:\02400941\...Plans\sheets\ 5-lighting.dgn  
PLOT DATE = 1/18/2012 7:35:18 PM

SCALE : 1"=20' SHEET NO. 8 OF 14 SHEETS STA. TO STA.

☐ STA. 400+00.00 (COLLEGE AVE.) =  
☐ STA. 104+04.20 (CONSTITUTION BLVD.)  
N. 1400512.28  
E. 803205.96

END IMPROVEMENTS  
COLLEGE AVE.  
STA. 404+62.00  
(MATCH EXISTING)  
N. 1400521.31  
E. 803667.87





**STREET LIGHTING LEGEND**

EXISTING	PROPOSED	DESCRIPTION
<input type="checkbox"/>	<input checked="" type="checkbox"/>	PORTLAND CEMENT CONCRETE HANDHOLE.
<input checked="" type="checkbox"/>		DOUBLE PORTLAND CEMENT CONCRETE HANDHOLE.
<input type="checkbox"/>	<input checked="" type="checkbox"/>	GULFBOX JUNCTION, COMPOSITE CONCRETE.
<input type="checkbox"/>	<input checked="" type="checkbox"/>	TRAFFIC SIGNAL CONTROLLER CABINET.
<input type="checkbox"/>	<input checked="" type="checkbox"/>	LIGHTING CONTROLLER (# = CONTROLLER NUMBER)
<input type="checkbox"/>	<input checked="" type="checkbox"/>	LIGHTING ASSEMBLY MOUNTED ON SIGNAL POLE.
	<input checked="" type="checkbox"/>	LIGHTING ASSEMBLY, SINGLE ARM WITH LUMINAIRE, PER SPECIAL PROVISIONS, MOUNTED ON 26' POLE, WITH CONCRETE FOUNDATION.
	<input checked="" type="checkbox"/>	PVC CONDUIT (SCH. 80) IN TRENCH OR BORED AS NOTED (1/2-INCH UNLESS NOTED OTHERWISE) SEE CONDUIT/CABLE SCHEDULE FOR QUANTITIES

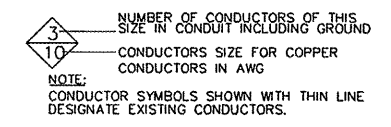
**CONDUIT ROUTING NOTE**

ALL CONDUIT SHOWN ARE DIAGRAMMATIC ONLY. ALL CONDUIT SHALL BE TRENCHED OR BORED THROUGH PATH OF LEAST RESISTANCE. COORDINATE THE INSTALLATION WITH UTILITIES, OTHER TRADES AND THE CITY.

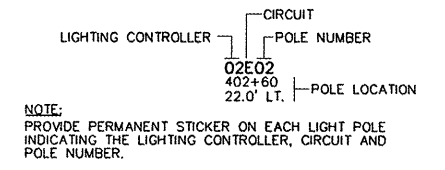
ALL CONDUITS SHALL BE PROVIDED WITH AN INTEGRAL PULL STRING. THE PULL STRING SHALL BE INCLUDED IN THE COST OF THE CONDUITS AND NO ADDITIONAL COMPENSATION WILL BE ALLOWED.

- KEY NOTES THIS SHEET**
- ① COMPLETE REMOVAL OF EXISTING LIGHTING ASSEMBLY WILL BE PERFORMED BY OTHERS.
  - ② PROVIDE CONDUIT UNDER EXISTING PAVEMENT USING DIRECTIONAL BORING. BORE SHALL BE MEASURED TO 2 FEET PAST PAVEMENT ON EACH SIDE. LOCATE ALL EXISTING UTILITIES IN AREA PRIOR TO BEGINNING. FOR PROTECTION OF EXISTING UNDERGROUND UTILITIES ALL EXCAVATION AROUND THEM SHALL BE DONE BY HAND.
  - ③ SAW CUT AND REMOVE PAVEMENT TO ACCOMMODATE LIGHT POLE BASE OR TO ALLOW FOR CONNECTION OF CONDUIT BORED UNDER PAVEMENT. REPLACE PAVEMENTS TO MATCH EXISTING OR AS DIRECTED BY THE ENGINEER.

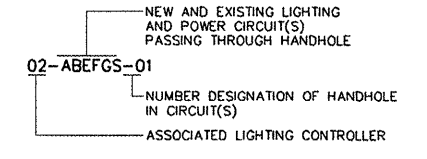
**CONDUCTOR SYMBOL SCHEME**



**CIRCUIT DESIGNATION SCHEME**



**HANDHOLE NAMING SCHEME**

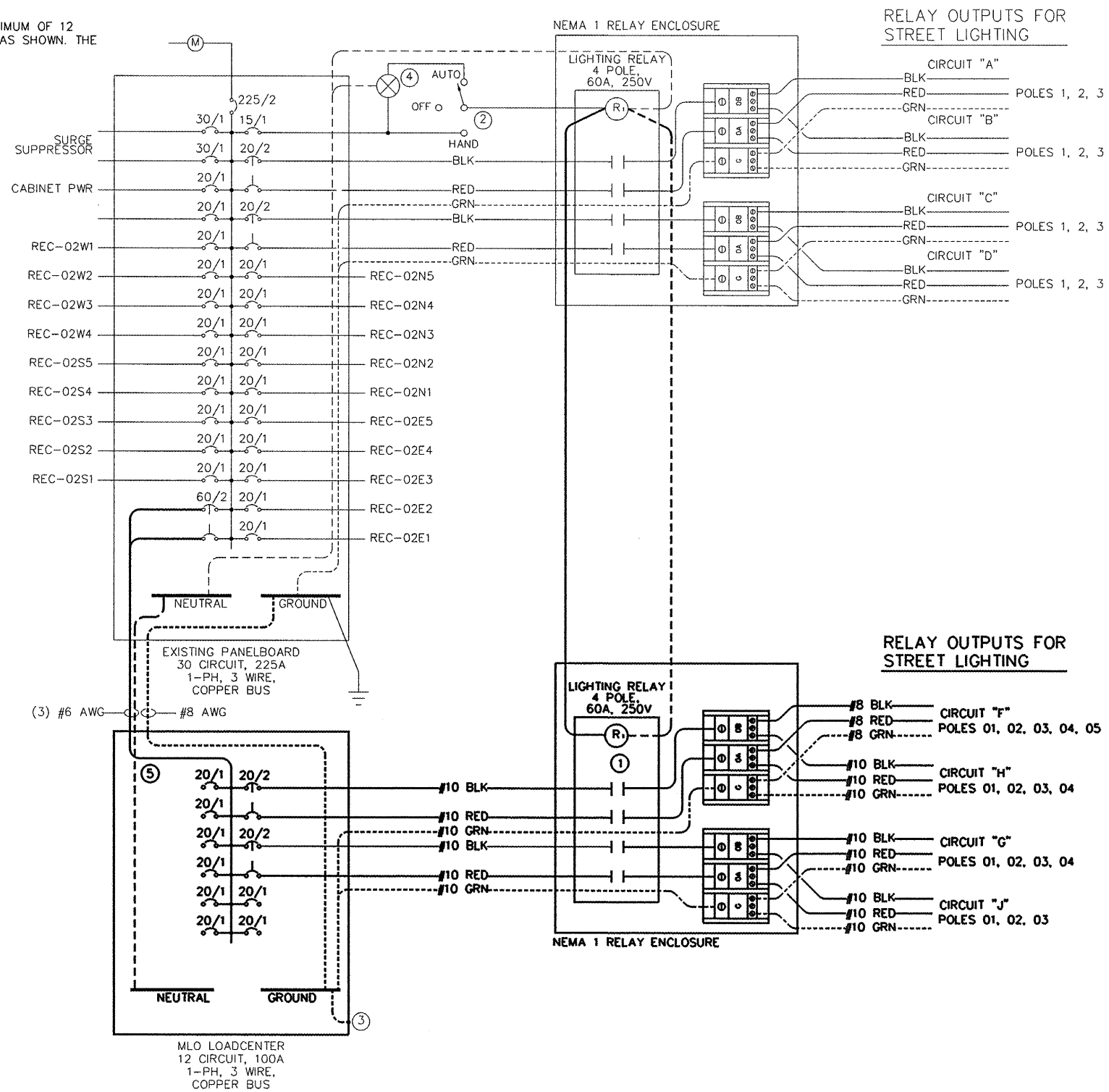


FILE NAME = p:\0240094\...\Plans\sheets\ 5-lighting.dgn  PLOT DATE = 1/18/2012 7:35:25 PM	DESIGNED - M.P. DRAWN - M.P. CHECKED - S.M.W. DATE - 1-12	REVISED - REVISED - REVISED - REVISED -	STATE OF ILLINOIS DEPARTMENT OF TRANSPORTATION		LIGHTING PLANS - BROADWAY AVENUE		F.A.U. RTE.	SECTION 10-00242-00-LT	COUNTY MCLEAN	TOTAL SHEETS 14	SHEET NO. 9
	SCALE : 1"=20' SHEET NO. 7 OF 14 SHEETS STA. TO STA.						CONTRACT NO. 91460 FED. ROAD DIST. NO. ILLINOIS FED. AID PROJECT				



ONE LINE DIAGRAM NOTES

- ① PROVIDE (1) 4-POLE LIGHTING CONTACTOR EQUAL TO GE CR360L SERIES FOR CONTROL OF THE LIGHTING. MOUNT CONTACTORS IN A NEMA 1 ENCLOSURE SIZED AS REQUIRED. THE RELAY CONTACTS SHALL BE RATED MINIMUM 60A, 250 VOLTS, HEAVY DUTY TYPE, AND RATED FOR BALLAST TYPE LOADS. THE RELAYS SHALL BE ELECTRICALLY OPERATED. THE RELAY COIL SHALL BE OPERATED BY 120 VOLTS.
- ② EXISTING 3 POSITION SWITCH MARKED "HAND, OFF, AUTO" TO BYPASS THE PHOTOCELL AS SHOWN.
- ③ GROUND PANEL PER CODE.
- ④ EXISTING PHOTOCELL IN THE CONTROLLER CABINET.
- ⑤ PROVIDE A 100A, 1 PHASE, 120/240V, 3 WIRE MAIN LUG ONLY LOADCENTER EQUAL TO SQUARE D TYPE QO WITH A MINIMUM OF 12 CIRCUIT POSITIONS IN A NEMA-1 ENCLOSURE. THE PANELBOARD SHALL HAVE A COPPER BUS, AND BRANCH BREAKERS AS SHOWN. THE PANEL SHALL INCLUDE A COPPER GROUND AND A NEUTRAL TERMINAL STRIP. PROVIDE TYPED INDEX.



LIGHTING CONTROLLER 02 ONE LINE ELECTRICAL DIAGRAM

LOCATION: NORTHEAST QUADRANT OF COLLEGE AVE. AND CONSTITUTION BLVD.

FILE NAME = p:\N02400941...Plans\sheet\ 5-lighting.dgn  
 PLOT DATE = 1/18/2012 7:35:22 PM

DESIGNED - M.P.	REVISED -
DRAWN - M.P.	REVISED -
CHECKED - S.M.W.	REVISED -
DATE - 1-12	REVISED -

STATE OF ILLINOIS  
 DEPARTMENT OF TRANSPORTATION

LIGHTING PLANS - DETAILS

SCALE : NONE SHEET NO. 11 OF 14 SHEETS STA. TO STA.

F.A.U. RTE.	SECTION	COUNTY	TOTAL SHEETS	SHEET NO.
	10-00242-00-LT	MCLEAN	14	11
FED. ROAD DIST. NO.		ILLINOIS FED. AID PROJECT		
		CONTRACT NO. 91460		

**CONDUIT AND ELECTRICAL CABLE SCHEDULE**

ROUTE	CONDUIT HORIZONTAL LENGTH (LF)	CONDUIT IN TRENCH, 2" DIA., PVC		CONDUIT PUSHED, 2" DIA., PVC		TRENCH AND BACKFILL WITH SCREENINGS AND/OR SAND		WIRE LENGTH		ELECTRIC CABLE IN CONDUIT, 600V (XLP-TYPE USE) 1/C NO. 10	ELECTRIC CABLE IN CONDUIT, 600V (XLP-TYPE USE) 1/C NO. 8	NOTES	
		NO.	TOTAL (LF)	NO.	TOTAL (LF)	NO.	TOTAL (LF)	SLACK & RISER ALLOWANCE	TOTAL LENGTH (LF)	81702110	81702120		
										NO.	TOTAL (LF)		
<b>CIRCUIT 02F</b>													
CONTROLLER 02	HH CDFGHNW-01	7						5	12	3	36		
HH CDFGHNW-01	HH CDFGHNW-02	42						5	47	3	141		
HH CDFGHNW-02	HH FG-03	205		2	410			5	210	3	630		
HH FG-03	HH FG-04	79		2	158			5	84	3	252		
HH FG-04	POLE 02F01	32		1	32			5	37	3	111		
POLE 02F01	POLE 02F02	155	1	85	1	70	1	85	5	160	3	480	
POLE 02F02	POLE 02F03	153	1	103	1	50	1	103	5	158	3	474	
POLE 02F03	POLE 02F04	165	1	135	1	30	1	135	5	170	3	510	
POLE 02F04	POLE 02F05	165	1	125	1	40	1	125	5	170	3	510	
<b>CIRCUIT 02G</b>													
CONTROLLER 02	HH-CDFGHNW-01	7						5	12	3	36		
HH-CDFGHNW-01	HH-CDFGHNW-02	42						5	47	3	141		
HH-CDFGHNW-02	HH FG-03	205						5	210	3	630		
HH FG-03	HH FG-04	79						5	84	3	252		
HH FG-04	POLE 02G01	20	1	20		1	20	5	25	3	75		
POLE 02G01	POLE 02G02	150	1	120	1	30	1	120	5	155	3	465	
POLE 02G02	POLE 02G03	145	1	95	1	50	1	95	5	150	3	450	
POLE 02G03	POLE 02G04	155	1	55	1	100	1	55	5	160	3	480	
<b>CIRCUIT 02H</b>													
CONTROLLER 02	HH CDFGHNW-01	7						5	12	3	36		
HH CDFGHNW-01	HH CDFGHNW-02	42						5	47	3	141		
HH CDFGHNW-02	HH CDHNW-03	27						5	32	3	96		
HH CDHNW-03	HH CDHNW-04	58						5	63	3	189		
HH CDHNW-04	HH CDHNW-05	62						5	67	3	201		
HH CDHNW-05	POLE 02H01	140	1	75	1	65	1	75	5	145	3	435	
POLE 02H01	POLE 02H02	165	1	130	1	35	1	130	5	170	3	510	
POLE 02H02	POLE 02H03	125	1	28	1	97	1	28	5	130	3	390	
POLE 02H03	POLE 02H04	85	1	40	1	45	1	40	5	90	3	270	
<b>CIRCUIT 02J</b>													
CONTROLLER 02	HH ABEJS-01	10						5	15	3	45		
HH ABEJS-01	HH AJS-02	65						5	70	3	210		
HH AJS-02	HH AJS-03	77						5	82	3	246		
HH AJS-03	HH J-04	58		1	58			5	63	3	189		
HH J-04	POLE 02J01	62	1	62		0	1	62	5	67	3	201	
POLE 02J01	POLE 02J02	155	1	95	1	60	1	95	5	160	3	480	
POLE 02J02	POLE 02J03	157			1	157			5	162	3	486	
<b>CIRCUIT 03C</b>													
POLE 03C15	POLE 03C16	68						5	73		3	219	
POLE 03C16	POLE 03C17	87	1	60	1	30	1	60	5	92		3	276
<b>MULBERRY STREET</b>													
HANDHOLE	HANDHOLE				1	375							
<b>TOTALS</b>		1,228*		1,892*		1,228*		6,654		3,639			

\* PROPOSED CONDUITS ARE INDICATED AS TRENCH OR PUSHED FOR INFORMATION PURPOSES. ALL CONDUIT AND TRENCH BACKFILL SHALL BE PAID FOR AT THE CONTRACT UNIT PRICE PER FOOT FOR UNDERGROUND CONDUIT OF THE TYPE AND SIZE SPECIFIED. SEE THE SPECIAL PROVISIONS FOR ADDITIONAL INFORMATION.

**LIGHTING - BILL OF MATERIALS**

ITEM NUMBER	DESCRIPTION	QUANTITY	UNIT
STANDARD ITEMS			
81013050	UNDERGROUND CONDUIT, PVC, 2" DIA.	3120	FOOT
81021370	UNDERGROUND CONDUIT, PVC, 3" DIA.	70	FOOT
81028390	UNDERGROUND CONDUIT, PVC, 4" DIA.	500	FOOT
81400700	HANDHOLE, PORTLAND CEMENT CONCRETE	3	EACH
81400730	HANDHOLE, COMPOSITE CONCRETE	2	EACH
81702110	ELECTRIC CABLE IN CONDUIT, 600V (XLP-TYPE USE) 1/C NO. 10	6654	FOOT
81702120	ELECTRIC CABLE IN CONDUIT, 600V (XLP-TYPE USE) 1/C NO. 8	3639	FOOT
84200500	REMOVAL OF LIGHTING UNIT, SALVAGE	2	EACH
89502385	REMOVE EXISTING CONCRETE FOUNDATION	2	EACH
X0326654	ORNAMENTAL LIGHT UNIT, COMPLETE	18	EACH
X8100863	INTERCEPT EXISTING CONDUIT	2	EACH
X8360120	LIGHT POLE FOUNDATION, SPECIAL	17	EACH
X8950130	MODIFY EXISTING LIGHTING CONTROLLER	1	EACH
XX007797	LUMINAIRE (SPECIAL)	34	EACH

**LIGHTING POLE ASSEMBLIES**

POLE NO.	LOCATION			LIGHT POLE FOUNDATION, SPECIAL	ORNAMENTAL LIGHT UNIT COMPLETE	LUMINAIRE (SPECIAL)	ELECTRIC CABLE IN LIGHT POLE, 600V (XLP-TYPE USE) 1/C NO. 12	NOTES
	ROAD	STATION	OFFSET					
F01	MULBERRY	504+74	19.3' LT	1	1	2	180	1,2
F02	MULBERRY	503+19	22.2' LT	1	1	2	180	1,2
F03	MULBERRY	501+66	22.0' LT	1	1	2	180	1,2
F04	MULBERRY	500+01	22.0' LT	1	1	2	180	1,2
F05	MULBERRY	498+36	27.0' LT	1	1	2	180	1,2
G01	MULBERRY	505+25	19.3' LT	1	1	2	180	1,2
G02	MULBERRY	506+71	19.3' LT	1	1	2	180	1,2
G03	MULBERRY	508+17	19.3' LT	1	1	2	180	1,2
G04	MULBERRY	509+72	19.4' LT	1	1	2	180	1,2
H01	COLLEGE	398+22	19.0' RT	1	1	2	180	1,2
H02	COLLEGE	396+56	19.0' RT	1	1	2	180	1,2
H03	BROADWAY	706+05	23.0' RT	1	1	1	180	1,2
H04	BROADWAY	705+29	39.5' RT	1	1	1	180	1,2
C17	COLLEGE	394+91	23.0' RT	1	1	2	180	1,2
C15	COLLEGE	393+36	24.0' RT	EXISTING	1	2	180	1,2
J01	COLLEGE	401+52	26.0' RT	1	1	2	180	1,2
J02	COLLEGE	403+07	26.0' RT	1	1	2	180	1,2
J03	COLLEGE	404+62	27.5' RT	1	1	2	180	1,2
<b>TOTALS</b>				17	18	34	3,240	

NOTES  
 1. ELECTRIC CABLE IN LIGHT POLE, 600V (XLP-TYPE USE) 1/C NO. 12 IS PROVIDED UNDER THE LUMINAIRE PAY ITEM AND IS SHOWN HERE FOR INFORMATION ONLY.  
 2. PENDANT ARMS AND BANNER ARMS ARE PROVIDED UNDER THE ORNAMENTAL LIGHT UNIT, COMPLETE PAY ITEM.

**HANDHOLES**

NO.	LOCATION			HANDHOLE, PORTLAND CEMENT CONCRETE 81400700	HANDHOLE, COMPOSITE CONCRETE 81400730	NOTES
	ROAD	STATION	OFFSET			
FG-03	MULBERRY	504+95.7	59.4' RT	1		
--	MULBERRY	501+95.0	25.6' RT.		1	
FG-04	MULBERRY	505+05.8	19.3' LT	1		
--	MULBERRY	505+70.0	25.6' RT.		1	
J-04	COLLEGE	400+91.0	26.0' RT	1		
<b>TOTALS</b>				3	2	

**CONDUIT SCHEDULE**

ROUTE	CONDUIT HORIZONTAL LENGTH (LF)	CONDUIT IN TRENCH, 3" DIA., PVC		CONDUIT IN TRENCH, 4" DIA., PVC		CONDUIT PUSHED, 4" DIA., PVC		TRENCH AND BACKFILL WITH SCREENINGS AND/OR SAND		CONDUIT 3" DIA., PVC MATERIAL ONLY		NOTES
		NO.	TOTAL (LF)	NO.	TOTAL (LF)	NO.	TOTAL (LF)	NO.	TOTAL (LF)	NO.	TOTAL (LF)	
<b>MULBERRY STREET &amp; CONSTITUTION TRAIL</b>												
JB 281-10	AMEREN TRANS.	290	1	40	1	340	1	160		290		
<b>POLE RISER</b>											1	30
<b>TOTALS</b>		40		340		160		290		30		

FILE NAME = p:\0240094\...plans\sheet5-lighting.dgn  
 PLOT DATE = 1/18/2012 7:35:24 PM

DESIGNED - M.P.  
 DRAWN - M.P.  
 CHECKED - S.M.W.  
 DATE - 1-12

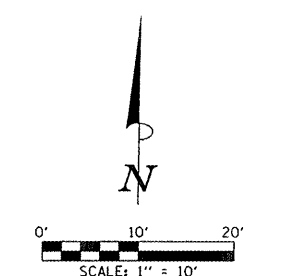
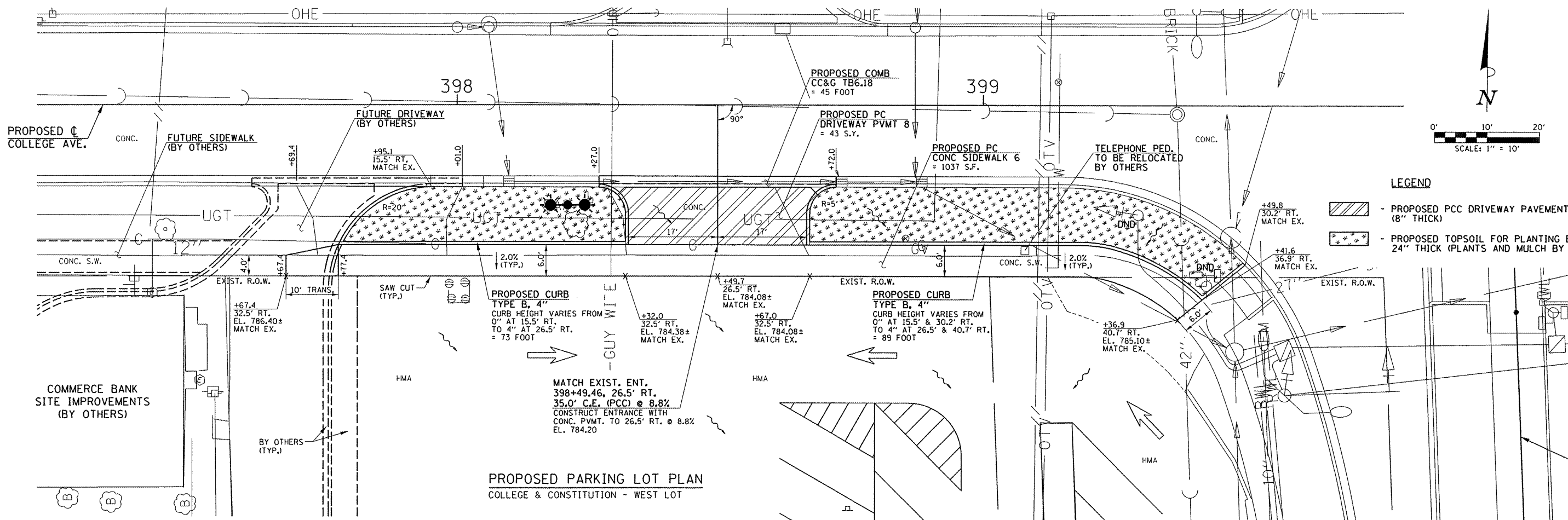
REVISED -  
 REVISED -  
 REVISED -  
 REVISED -

STATE OF ILLINOIS  
 DEPARTMENT OF TRANSPORTATION

**LIGHTING PLANS - BILL OF MATERIALS**

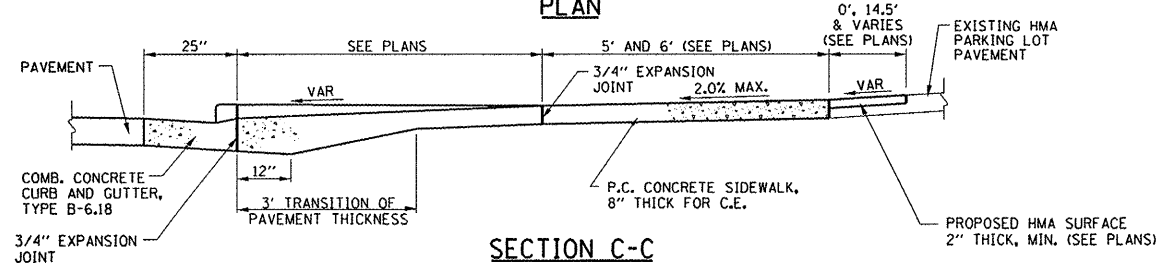
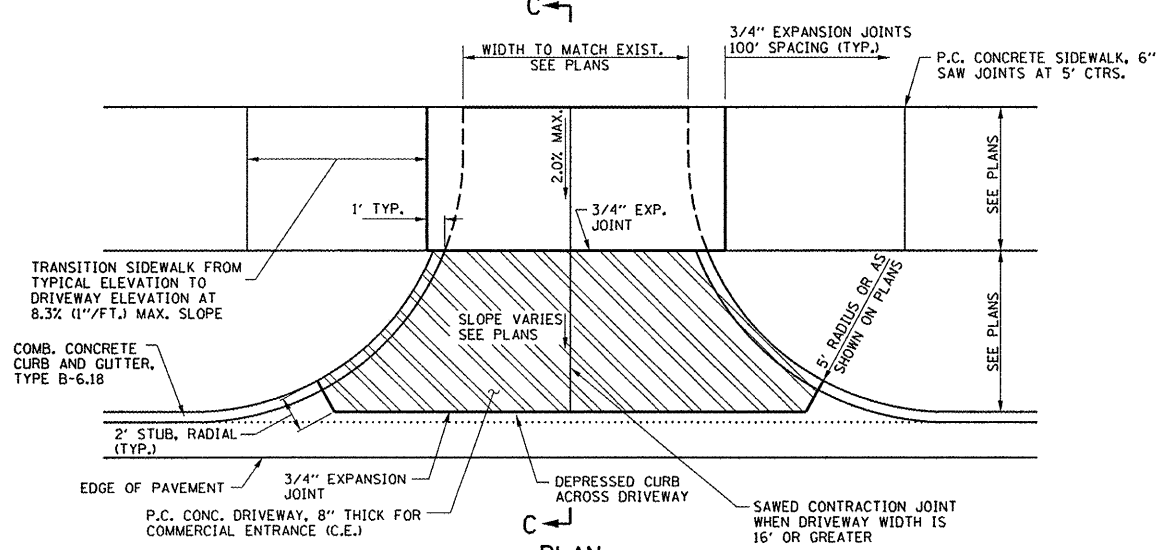
SCALE : NONE SHEET NO. 12 OF 14 SHEETS STA. TO STA.

F.A.I.L. RTE.	SECTION	COUNTY	TOTAL SHEETS	SHEET NO.
	10-00242-00-LT	MCLEAN	14	12
CONTRACT NO. 91460				
FED. ROAD DIST. NO. ILLINOIS FED. AID PROJECT				



- LEGEND**
- PROPOSED PCC DRIVEWAY PAVEMENT (8" THICK)
  - PROPOSED TOPSOIL FOR PLANTING BEDS 24" THICK (PLANTS AND MULCH BY OTHERS)

**PROPOSED PARKING LOT PLAN**  
COLLEGE & CONSTITUTION - WEST LOT



**P.C. CONCRETE DRIVEWAY DETAIL**  
ADJACENT TO COMB. CONC. CURB & GUTTER, TYPE B-6.18

PAVING REMOVAL SCHEDULE			
LOCATION	44000200 DRIVEWAY PAVEMENT REM (SQ YD)	44000500 COMB. CURB AND GUTTER REM (FOOT)	44000600 SIDEWALK REM (SQ FT)
ENTRANCE RT., FROM +69.4± TO +01.0±	38		
397+67.4 RT. TO 399+36.9 RT.			721
ENTRANCE RT., FROM +27.0± TO +72.0±	47	45	
<b>SHEET TOTAL</b>	<b>85</b>	<b>45</b>	<b>721</b>

**P.C.C. DRIVEWAY PAVEMENT GENERAL NOTES**

- THE COST OF CONSTRUCTING THE DEPRESSED CURB INCLUDING THE 2" STUB AS SHOWN SHALL BE CONSIDERED INCLUDED IN THE COST OF CONSTRUCTING THE COMBINATION CONCRETE CURB AND GUTTER TYPE B-6.18 AND NO ADDITIONAL COMPENSATION WILL BE ALLOWED.
- THE COST OF FURNISHING AND INSTALLING THE 3/4" EXPANSION JOINTS AND THE COST OF CONSTRUCTING THE P.C. CONCRETE DRIVEWAY THICKNESS TRANSITION, INCLUDING THE ADJACENT CURBING AS SHOWN, SHALL BE INCLUDED IN THE COST OF CONSTRUCTING P.C. CONCRETE DRIVEWAY AND NO ADDITIONAL COMPENSATION WILL BE ALLOWED.
- THE NORMAL CROSS SLOPES OF SIDEWALKS SHALL BE 2.0%.
- THE COST OF CONSTRUCTING THE P.C. CONCRETE DRIVEWAY PAVEMENT THICKER ADJACENT TO THE GUTTER AS SHOWN IN SECTION A-A WILL BE CONSIDERED INCLUDED IN THE COST OF THE P.C. CONCRETE DRIVEWAY PAVEMENT AND NO ADDITIONAL COMPENSATION WILL BE ALLOWED.
- THE COST OF CONSTRUCTING THE P.C. CONCRETE SIDEWALK 8" THICK THROUGH DRIVEWAYS SHALL BE CONSIDERED INCLUDED IN THE COST OF P.C. CONCRETE SIDEWALK 6" AND NO ADDITIONAL COMPENSATION WILL BE ALLOWED.
- WHEN THE WIDTH OF THE P.C. CONCRETE DRIVEWAY PAVEMENT IS BETWEEN 12' AND 24' A CONTRACTION JOINT SHALL BE PLACED AT THE CENTER OF THE DRIVEWAY. WHEN THE WIDTH OF THE P.C. CONCRETE DRIVEWAY PAVEMENT IS BETWEEN 24' TO 35', TWO CONTRACTION JOINTS EVENLY SPACED SHALL BE PLACED IN THE DRIVEWAY. TRANSVERSE CONTRACTION JOINTS SHALL BE PLACED AT 12' MAXIMUM SPACING.

BM 12 - TOP OF 3"± CONCRETE LEDGE ABOVE AND BETWEEN TWO AUTOMATIC SPRINKLER CONNECTIONS AT S.E. CORNER OF VERIZON BUILDING AT 104 MULBERRY AVENUE. ELEV. 787.89 (FARNSWORTH BOOK NO. 2831-10)

THE PROPOSED PARKING LOT PAVEMENT MARKINGS ARE SHOWN FOR INFORMATION ONLY. PROPOSED PAVEMENT MARKINGS WILL BE DONE BY OTHERS.

FILE NAME = p:\02400941\...Plans\sheet\ 6-parkinglots.dgn  
PLOT DATE = 1/18/2012 7:35:31 PM

DESIGNED - K.L.R.	REVISED -
DRAWN - K.L.R.	REVISED -
CHECKED - S.M.W.	REVISED -
DATE - 1-12	REVISED -

STATE OF ILLINOIS  
DEPARTMENT OF TRANSPORTATION

**PARKING LOT PLAN**

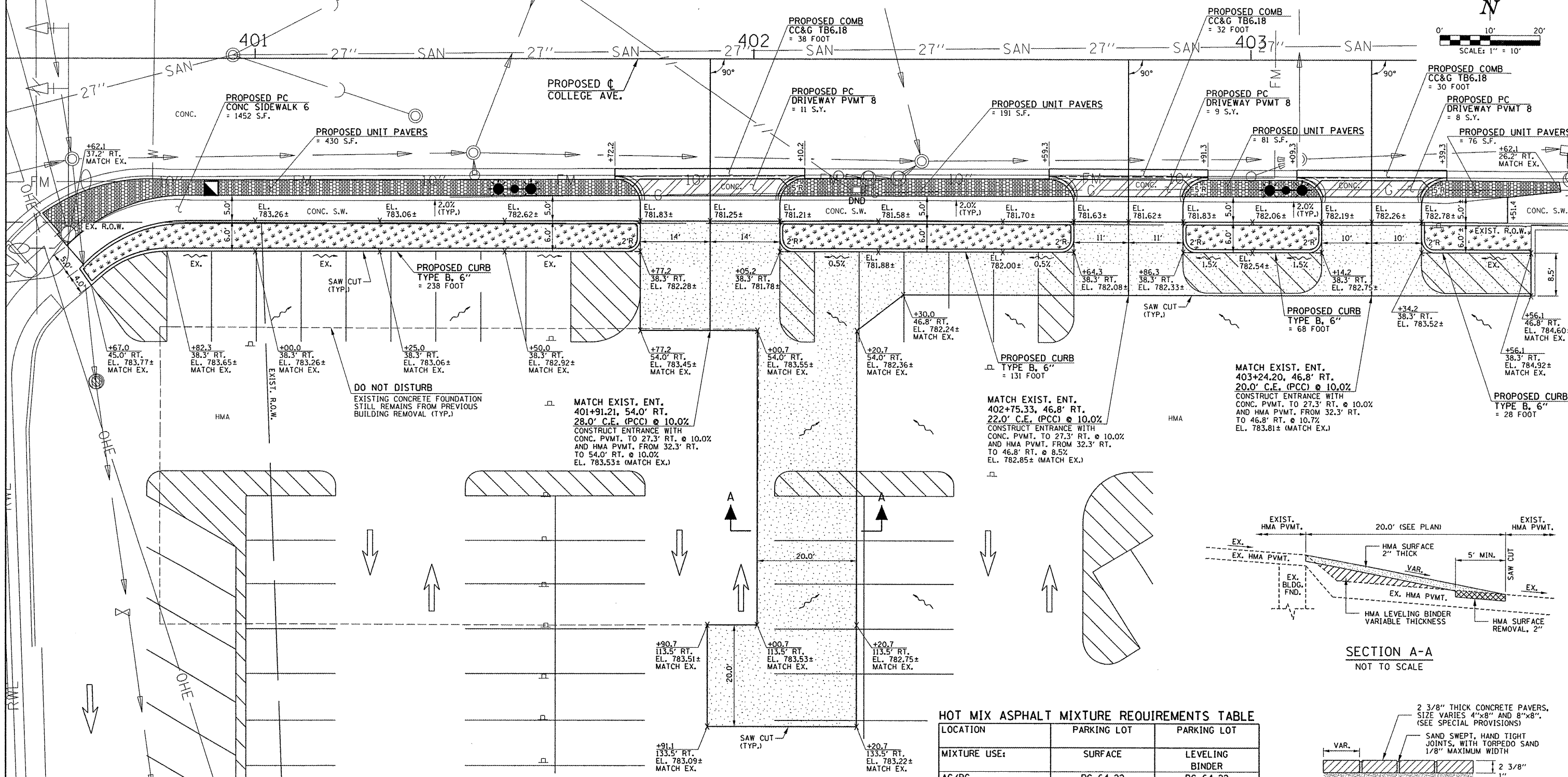
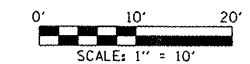
SCALE : 1"=10' SHEET NO. 13 OF 14 SHEETS STA. TO STA.

F.A.L. RTE.	SECTION	COUNTY	TOTAL SHEETS	SHEET NO.
	10-00242-00-LT	MCLEAN	14	13
FED. ROAD DIST. NO.		ILLINOIS FED. AID PROJECT	CONTRACT NO. 91460	

BM 12 - TOP OF 3"± CONCRETE LEDGE ABOVE AND BETWEEN TWO AUTOMATIC SPRINKLER CONNECTIONS AT S.E. CORNER OF VERIZON BUILDING AT 104 MULBERRY AVENUE. ELEV. 787.89 (FARNSWORTH BOOK NO. 2831-10)

THE PROPOSED PARKING LOT PAVEMENT MARKINGS ARE SHOWN FOR INFORMATION ONLY. PROPOSED PAVEMENT MARKINGS WILL BE DONE BY OTHERS.

- LEGEND**
- PROPOSED PCC DRIVEWAY PAVEMENT (8" THICK)
  - PROPOSED HOT-MIX ASPHALT SURFACING (2" THICK, MIN.)
  - PROPOSED UNIT PAVERS (SEE SPECIAL PROVISIONS)
  - PROPOSED TOPSOIL FOR PLANTING BEDS 24" THICK (PLANTS AND MULCH BY OTHERS)

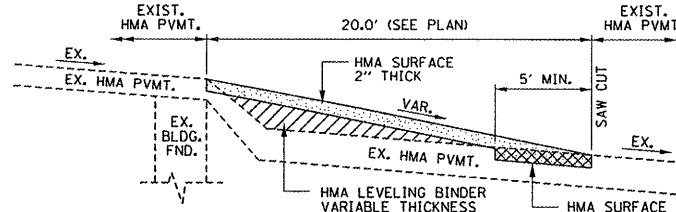


DO NOT DISTURB  
EXISTING CONCRETE FOUNDATION STILL REMAINS FROM PREVIOUS BUILDING REMOVAL (TYP.)

MATCH EXIST. ENT.  
401+91.21, 54.0' RT.  
28.0' C.E. (PCC) @ 10.0%  
CONSTRUCT ENTRANCE WITH CONC. PVMT. TO 27.3' RT. @ 10.0% AND HMA PVMT. FROM 32.3' RT. TO 54.0' RT. @ 10.0% EL. 783.53± (MATCH EX.)

MATCH EXIST. ENT.  
402+75.33, 46.8' RT.  
22.0' C.E. (PCC) @ 10.0%  
CONSTRUCT ENTRANCE WITH CONC. PVMT. TO 27.3' RT. @ 10.0% AND HMA PVMT. FROM 32.3' RT. TO 46.8' RT. @ 8.5% EL. 782.85± (MATCH EX.)

MATCH EXIST. ENT.  
403+24.20, 46.8' RT.  
20.0' C.E. (PCC) @ 10.0%  
CONSTRUCT ENTRANCE WITH CONC. PVMT. TO 27.3' RT. @ 10.0% AND HMA PVMT. FROM 32.3' RT. TO 46.8' RT. @ 10.7% EL. 783.81± (MATCH EX.)



SECTION A-A  
NOT TO SCALE

**PAVING REMOVAL SCHEDULE**

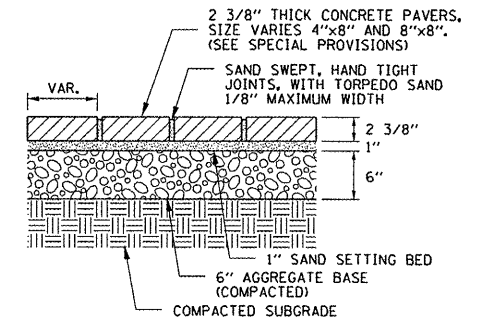
LOCATION	44000100 PAVEMENT REM (SQ YD)	44000200 DRIVEWAY PAVEMENT REM (SQ YD)	44000500 COMB. CURB AND GUTTER REM (FOOT)	44000600 SIDEWALK REM (SQ FT)
PARKING LOT (PLANTING BED AREAS)	145			1178
400+62.1 RT. TO 403+51.4 RT.				
401+91.2 RT. - COMMERCIAL ENTRANCE		13	38	
402+75.3 RT. - COMMERCIAL ENTRANCE		11	32	
403+24.2 RT. - COMMERCIAL ENTRANCE		10	30	
SHEET TOTAL	145	34	100	1178

**PROPOSED PARKING LOT PLAN**  
COLLEGE & CONSTITUTION - EAST LOT

THE EXISTING HMA PAVEMENT THICKNESS VARIES WITHIN THE LIMITS OF CONSTRUCTION AND ACTUAL THICKNESS IS UNKNOWN. IF THE EXISTING BASE IS ENCOUNTERED DURING CONSTRUCTION, THE CONTRACTOR SHALL BE RESPONSIBLE FOR PREPARING THE BASE TO THE SATISFACTION OF THE ENGINEER. ANY PREPARATION OF BASE SHALL BE INCLUDED IN THE VARIOUS CONTRACT ITEMS OF WORK AND WILL NOT BE MEASURED FOR PAYMENT.

**HOT MIX ASPHALT MIXTURE REQUIREMENTS TABLE**

LOCATION	PARKING LOT	PARKING LOT
MIXTURE USE:	SURFACE	LEVELING BINDER
AC/PG	PG 64-22	PG 64-22
RAP % (MAX)	10	15
DESIGN AIR VOIDS	4.0% @ NDES = 70	4.0% @ NDES = 70
MIXTURE COMPOSITION (GRADATION)	IL 9.5	IL 9.5
FRICTION AGGREGATE	MIXTURE C	N/A



UNIT PAVER DETAIL  
NOT TO SCALE

FILE NAME = p:\10240094\...Plans\sheet\ 6-parkinglots.dgn  
PLOT DATE = 1/18/2012 7:35:35 PM

DESIGNED - K.L.R.  
DRAWN - K.L.R.  
CHECKED - S.M.W.  
DATE - 1-12

REVISED -  
REVISED -  
REVISED -  
REVISED -

STATE OF ILLINOIS  
DEPARTMENT OF TRANSPORTATION

**PARKING LOT PLAN**  
SCALE: 1"=10' SHEET NO. 14 OF 14 SHEETS STA. TO STA.

F.A.U. RTE.	SECTION	COUNTY	TOTAL SHEETS	SHEET NO.
	10-00242-00-LT	MCLEAN	14	14
CONTRACT NO. 91460				
FED. ROAD DIST. NO. ILLINOIS FED. AID PROJECT				