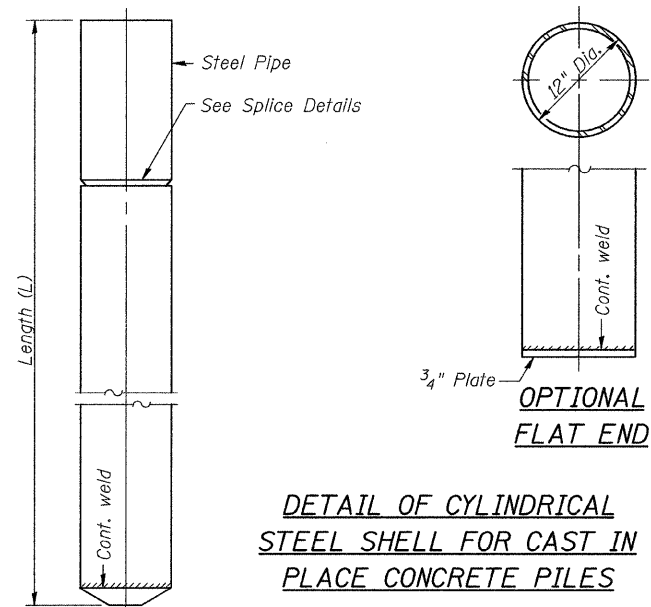
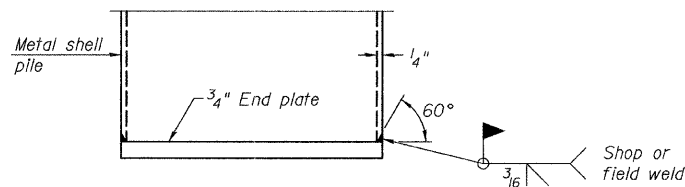


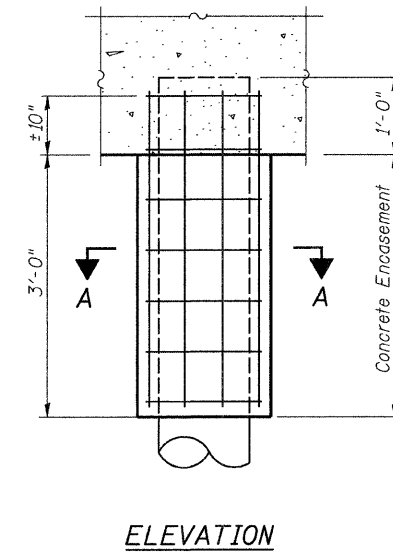
Notes: Driving and bearing ends of pipe shall be cut square. The thickness of the shell shall be 0.25 inches with a tolerance of 5%. The shell shall be according to Article 1006.05(a) of the Standard Specifications, and shall be ASTM A252 Grade 3.



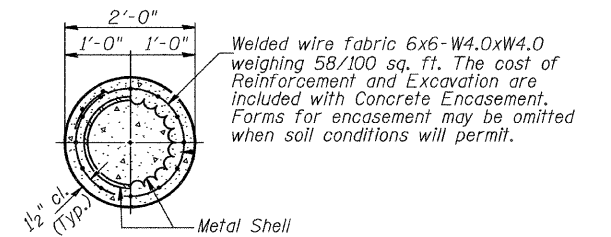
DETAIL OF CYLINDRICAL STEEL SHELL FOR CAST IN PLACE CONCRETE PILES



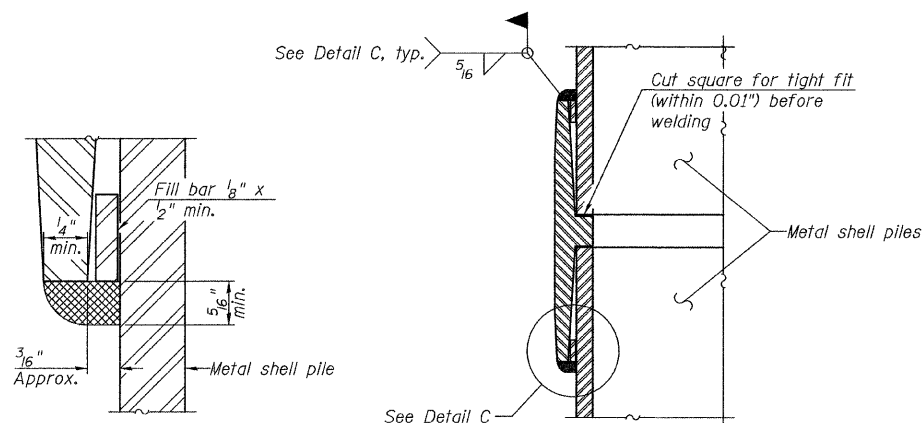
END PLATE ATTACHMENT



ELEVATION



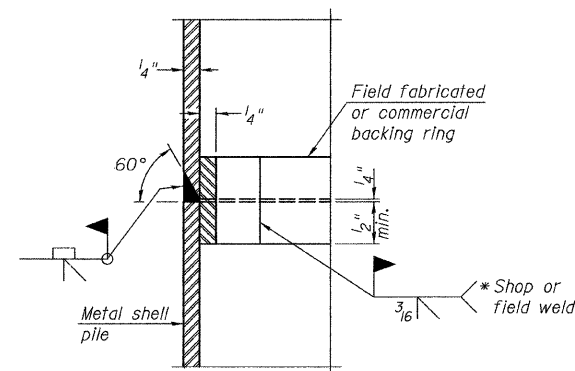
**SECTION A-A
DETAIL OF METAL SHELL PILE ENCASEMENT AT ABUTMENTS**



DETAIL C

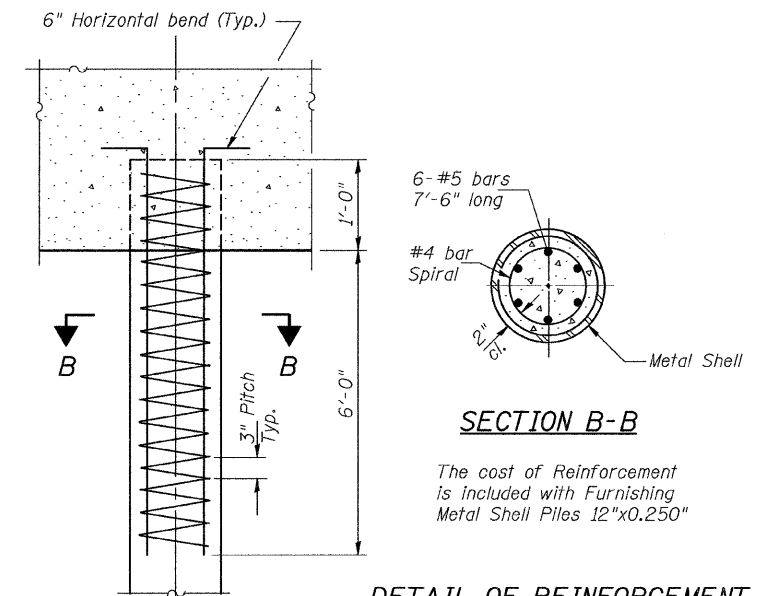
WELDED COMMERCIAL SPLICE

Notes:
The 1/8" x 1/2" min. fill bar may be constructed of 2 bars with a 1/8" max. gap between them.
Pile segments shall be driven to solid contact with splicer before welding.



COMPLETE PENETRATION WELD SPLICE

* Field fabricated backing ring may be made from pile shell by removing segment to allow reducing circumference and vertically rejoin with partial joint penetration weld.



DETAIL OF REINFORCEMENT FOR METAL SHELLS AT ABUTMENTS

SECTION B-B

The cost of Reinforcement is included with Furnishing Metal Shell Piles 12"x0.250"

**METAL SHELL PILE DETAILS
BUREAU COUNTY
SECTION 11-07119-00-BR
T.R. 55 OVER UNION DITCH**

SHEET NO. 7 11 SHEETS	ROUTE NO.	SECTION	COUNTY	TOTAL SHEETS	SHEET NO.
	TR 55	11-07119-00-BR	BUREAU	21	13
S.N. 006-4096			CONTRACT NO. 87499		
FED. ROAD DIST. NO. 7		ILLINOIS	FED. AID PROJECT BRS-0011(083)		