

04-27-12 LETTING ITEM 180

STATE OF ILLINOIS
DEPARTMENT OF TRANSPORTATION
DIVISION OF HIGHWAYS
PLANS FOR PROPOSED
HIGHWAY BRIDGE
PROGRAM

LIVINGSTON COUNTY
SECTION 09-20110-02-BR
ROUTE: T.R. 169 (1300N)
FEDERAL PROJECT BROS-0105(050)

T.R.	SECTION	COUNTY	TOTAL SHEETS	SHEET NO.
169	09-20110-02-BR	LIVINGSTON	17	1
FED. ROAD DIST. NO.	ILLINOIS	CONTRACT NO. 87496		

INDEX OF SHEETS

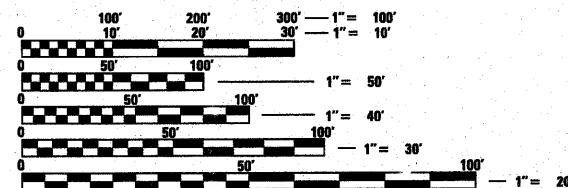
- 1 COVER SHEET
- 2 GENERAL NOTES, COMMITMENTS AND MISCELLANEOUS DETAILS
- 3 SUMMARY OF QUANTITIES AND SCHEDULE OF QUANTITIES
- 4 ALIGNMENT, SURVEY TIES AND BENCHMARKS
- 5 PLAN AND PROFILE SHEET
- 6-14 STRUCTURE PLANS S.N. 053-4201
- 15-17 CROSS SECTIONS

HIGHWAY STANDARD DETAILS

- 000001-06 STANDARD SYMBOLS, ABBREVIATIONS AND PATTERNS
- 001001-02 AREAS OF REINFORCEMENT BARS
- 001006 DECIMAL OF AN INCH AND CF A FOOT
- 280001-06 TEMPORARY EROSION CONTROL SYSTEMS
- 515001-03 NAME PLATE FOR BRIDGES
- 601101-01 CONCRETE HEADWALL FOR PIPE DRAIN
- 635006-03 REFLECTOR AND TERMINAL MARKER PLACEMENT
- 635011-02 REFLECTOR MARKER AND MOUNTING DETAILS
- 701901-02 TRAFFIC CONTROL DEVICES
- B.L.R. 21-9 TYPICAL APPLICATION OF TRAFFIC CONTROL DEVICES FOR CONSTRUCTION ON RURAL LOCAL HIGHWAYS
- B.L.R. 24-2 MAILBOX TURNOUT FOR LOCAL ROADS

UTILITIES:

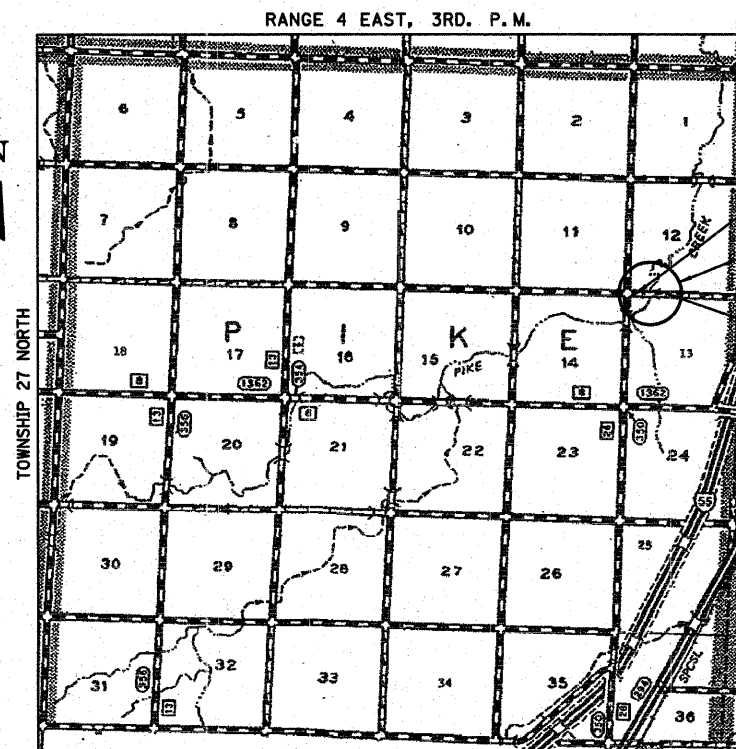
- POWER - AMEREN (ILLINOIS POWER)
- TELEPHONE - FRONTIER



FULL SIZE PLANS HAVE BEEN PREPARED USING STANDARD ENGINEERING SCALES. REDUCED SIZED PLANS WILL NOT CONFORM TO STANDARD SCALES. IN MAKING MEASUREMENTS ON REDUCED PLANS, THE ABOVE SCALES MAY BE USED.

J.U.L.I.E.
 JOINT UTILITY LOCATION INFORMATION FOR EXCAVATION
 1-800-892-0123
 OR 811

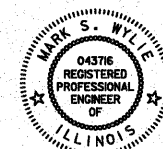
JOB NUMBER C-93-135-11
CONTRACT NUMBER 87496
CONSTRUCTION TYPE CODE: ROADWAY: 0004
BRIDGE: 0011



LOCATION MAP

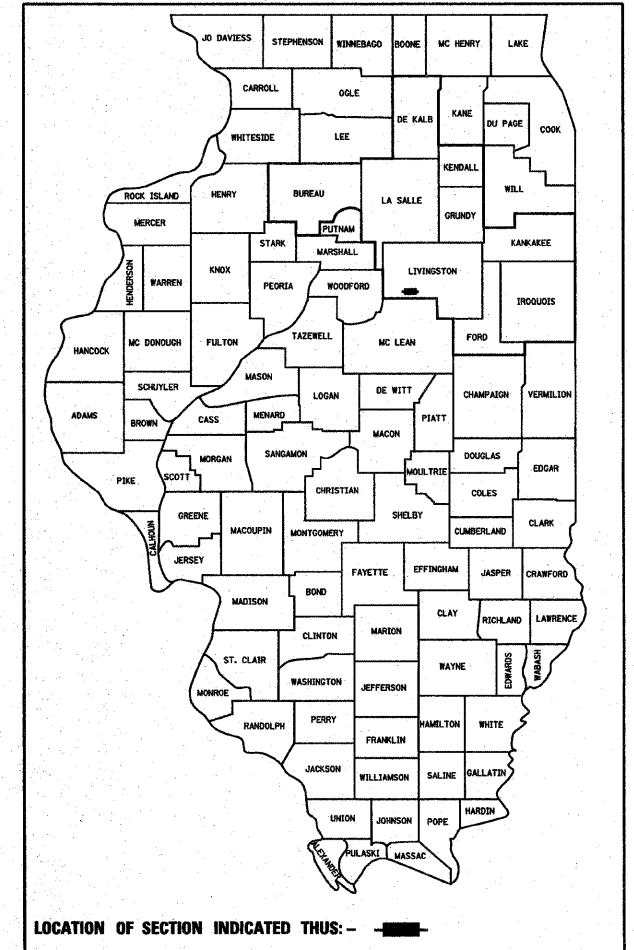
GROSS LENGTH OF PROJECT = 530.00 FT = 0.100 MILE
 NET LENGTH OF PROJECT = 530.00 FT = 0.100 MILE

FUNCTIONAL CLASSIFICATION: LOCAL ROAD (NON-URBAN)
 DESIGN SPEED: 30 MPH
 DESIGN TRAFFIC: 0-250
 % TRUCKS: 0.0
 % PASSENGER VEHICLES: 100.0



Mark S. Wylie Date 2/6/12
MARK S. WYLIE
 ILLINOIS PROFESSIONAL ENGINEER
 NO. 062-043716
 EXPIRATION 11/30/13

C-93-135-11



STATE OF ILLINOIS
DEPARTMENT OF TRANSPORTATION
DIVISION OF HIGHWAYS

SUBMITTED 02/14/2012
[Signature] TOWNSHIP COMMISSIONER OF HIGHWAYS

SUBMITTED 02/14/2012
[Signature] COUNTY HIGHWAY ENGINEER

PASSED 02-16-2012
[Signature] DISTRICT 3 IMPLEMENTATION ENGINEER

RELEASING FOR BID BASED ON LIMITED REVIEW 02-16-2012
[Signature] DEPUTY DIRECTOR OF HIGHWAYS, REGION 2 ENGINEER

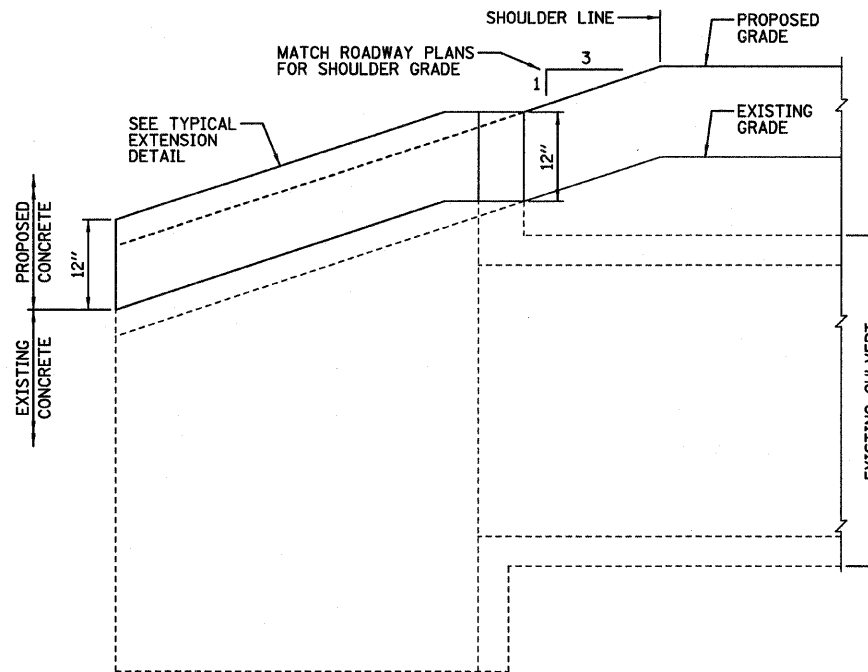


GENERAL NOTES

EXCEPT AS NOTED ON THE PLANS, PAVEMENT GRADES SHOWN ARE AT THE TOP OF PAVEMENT SURFACES.
 FOR STABILIZATION, ALL TYPE III BARRICADES SHALL REQUIRE A MINIMUM OF FOUR SAND BAGS PER BARRICADE.
 WHERE SECTION OR SUBSECTION MONUMENTS ARE ENCOUNTERED, THE ENGINEER SHALL BE NOTIFIED BEFORE SUCH MONUMENTS ARE REMOVED. THE CONTRACTOR SHALL PROTECT AND CAREFULLY PRESERVE ALL MONUMENTS UNTIL AN AUTHORIZED SURVEYOR OR AGENT HAS WITNESSED OR OTHERWISE REFERENCED THEIR LOCATION. THE CONTRACTOR SHALL BE RESPONSIBLE FOR HAVING AN AUTHORIZED SURVEYOR REESTABLISH ANY SECTION OR SUBSECTION MONUMENTS DESTROYED BY HIS OPERATIONS.
 SEEDING SHALL NOT BE PERMITTED AT ANY TIME WHEN THE GROUND IS FROZEN, WET, OR IN AN UNTILLABLE CONDITION. LOCATIONS TO BE SEEDED WILL BE DETERMINED BY THE ENGINEER.
 THE FINISHED EARTHWORK SHALL HAVE A VEGETATION SUSTAINING SOIL COVERING THE TOP FOUR INCHES IN AREAS TO BE SEEDED OR SODDED. THE VEGETATION SUSTAINING SOIL REQUIRED WILL NOT BE PAID FOR SEPARATELY BUT SHALL BE INCLUDED IN THE COST OF EARTH EXCAVATION.
 ALL ELEVATIONS REFER TO U.S.G.S. MEAN SEA LEVEL DATUM.
 ABANDONED UNDERGROUND UTILITIES THAT CONFLICT WITH CONSTRUCTION SHALL BE DISPOSED OF OUTSIDE THE LIMITS OF THE RIGHT OF WAY ACCORDING TO ARTICLE 202.03 OF THE STANDARD SPECIFICATIONS AND AS DIRECTED BY THE ENGINEER. THIS WORK WILL NOT BE PAID FOR SEPARATELY, BUT SHALL BE INCLUDED IN THE COST OF EARTH EXCAVATION.
 ANY REFERENCE TO A STANDARD IN THESE PLANS SHALL BE INTERPRETED TO MEAN THE EDITION AS INDICATED BY THE SUBNUMBER SHOWN IN THE LIST OF STANDARDS INCLUDED IN THESE PLANS.
 THE CONTRACTOR SHALL BE RESPONSIBLE FOR PROTECTING UTILITY PROPERTY FROM CONSTRUCTION OPERATIONS AS OUTLINED IN ARTICLE 107.31 OF THE STANDARD SPECIFICATIONS.

COMMITMENTS

NONE

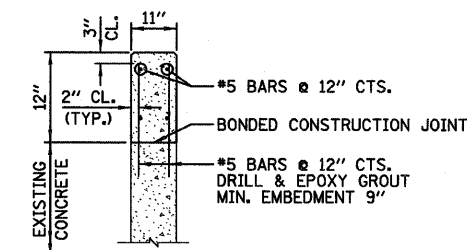


TYPICAL HEADWALL / WINGWALL EXTENSION

12' x 5' BOX CULVERT @ STA. 13+00

**DESIGN STRESSES
FIELD UNITS**

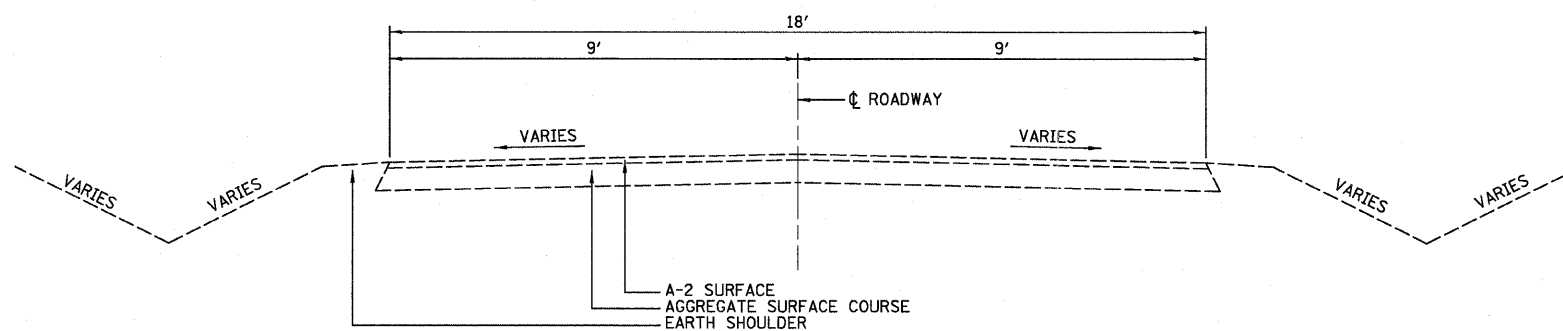
f'c = 3,500 psi (CAST-IN-PLACE)
 fy = 60,000 psi (REINFORCEMENT)



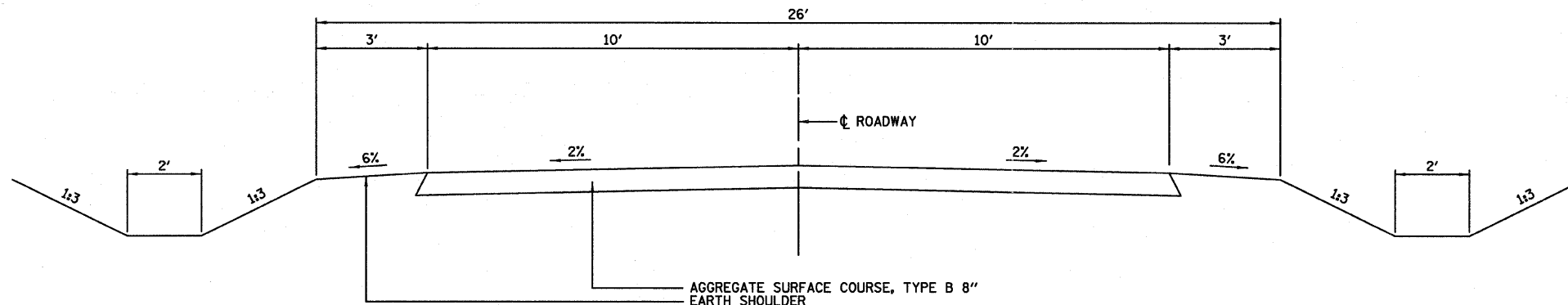
TYPICAL EXTENSION DETAIL

NOTES:

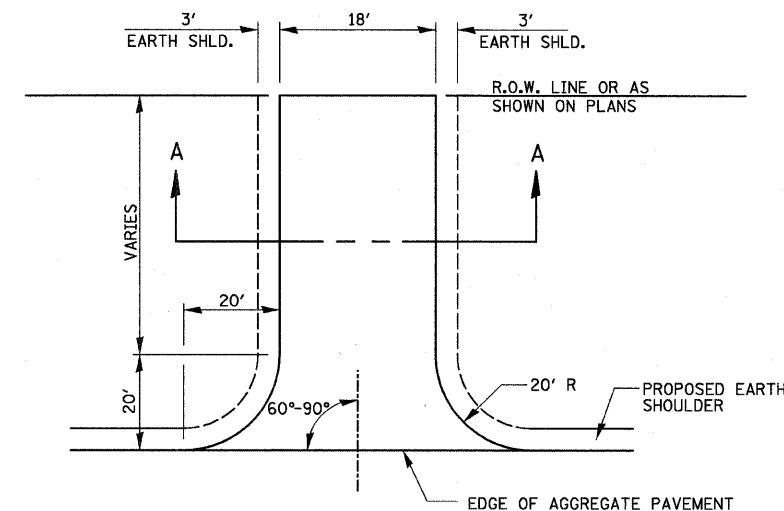
- 1.) THE COST OF THE HEADWALL/WINGWALL EXTENSION SHALL BE INCLUDED IN THE COST OF "AGGREGATE SURFACE COURSE, TYPE B".
- 2.) FIELD VERIFY ALL EXISTING HEADWALL/WINGWALL DIMENSIONS AND ADJUST ACCORDINGLY.



EXISTING TYPICAL CROSS SECTION

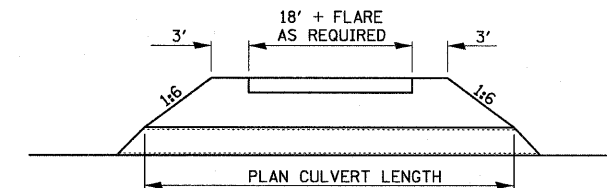


PROPOSED TYPICAL CROSS SECTION



PRIVATE ENTRANCE DETAIL

NOTE: PRIVATE ENTRANCE AND MAILBOX TURNOUT SHALL BE AGGREGATE SURFACE COURSE, TYPE B 6".



SECTION A-A



USER NAME = #USER#	DESIGNED - JML	REVISED -
PLOT SCALE = #SCALE#	DRAWN - JJO	REVISED -
PLOT DATE = #DATE#	CHECKED - MSW	REVISED -
	DATE - 02/06/12	REVISED -

STATE OF ILLINOIS
DEPARTMENT OF TRANSPORTATION

**GENERAL NOTES, COMMITMENTS
AND MISCELLANEOUS DETAILS**

SCALE: SHEET NO. OF SHEETS STA. TO STA.

T.R.	SECTION	COUNTY	TOTAL SHEETS	SHEET NO.
169	09-20110-02-BR	LIVINGSTON	17	2
CONTRACT NO. 87496				
FED. ROAD DIST. NO. ILLINOIS FED. AID PROJECT				

SUMMARY OF QUANTITIES

CODE NUMBER	ITEM	UNIT	TOTAL	STRUCTURE NO. 053-4201	
				ROADWAY 0004	STRUCTURE 0011
* 20200100	EARTH EXCAVATION	CU YD	655	655	
20300100	CHANNEL EXCAVATION	CU YD	340		340
20400800	FURNISHED EXCAVATION	CU YD	765	765	
* 25000200	SEEDING, CLASS 2	ACRE	0.50	0.50	
25100635	HEAVY DUTY EROSION CONTROL BLANKET	SQ YD	296	296	
28000250	TEMPORARY EROSION CONTROL SEEDING	POUND	400	400	
* 28000305	TEMPORARY DITCH CHECKS	FOOT	70	70	
28000500	INLET AND PIPE PROTECTION	EACH	1	1	
28100107	STONE RIPRAP, CLASS A4	SQ YD	368		368
28200200	FILTER FABRIC	SQ YD	368		368
40200800	AGGREGATE SURFACE COURSE, TYPE B	TON	460	460	
50100100	REMOVAL OF EXISTING STRUCTURES	EACH	1		1
50200100	STRUCTURE EXCAVATION	CU YD	80		80
50200300	COFFERDAM EXCAVATION	CU YD	80		80
50200400	ROCK EXCAVATION FOR STRUCTURES	CU YD	9		9
* 50201101	COFFERDAM (TYPE 1) (LOCATION - 1)	EACH	1		1
* 50201102	COFFERDAM (TYPE 1) (LOCATION - 2)	EACH	1		1
50300225	CONCRETE STRUCTURES	CU YD	53		53
50300265	SEAL COAT CONCRETE	CU YD	1.8		1.8
50300280	CONCRETE ENCASEMENT	CU YD	2.8		2.8
50400105	PRECAST CONCRETE BRIDGE SLAB	SQ FT	2356		2356
50800205	REINFORCEMENT BARS, EPOXY COATED	POUND	6630		6630
△ 50900205	STEEL RAILING, TYPE S1	FOOT	184		184
51201400	FURNISHING STEEL PILES HP10X42	FOOT	116		116
51202305	DRIVING PILES	FOOT	116		116
51203400	TEST PILE STEEL HP10X42	EACH	1		1
51500100	NAME PLATES	EACH	1		1
54200229	PIPE CULVERTS, CLASS D, TYPE 1 24"	FOOT	36	36	
59100100	GEOCOMPOSITE WALL DRAIN	SQ YD	20		20
67100100	MOBILIZATION	L SUM	1	1	
70101830	TRAFFIC CONTROL AND PROTECTION, STANDARD BLR 21	L SUM	1	1	
△ 78201000	TERMINAL MARKER - DIRECT APPLIED	EACH	4	4	
* X2070304	POROUS GRANULAR EMBANKMENT, SPECIAL	CU YD	47		47
* Z0046304	PIPE UNDERDRAINS FOR STRUCTURES 4"	FOOT	110		110

* SPECIAL PROVISION
 △ SPECIALTY ITEMS

SCHEDULE OF QUANTITIES

EARTHWORK				
	EARTH EXCAVATION	TOTAL EXCAVATION ADJUSTED FOR 25% SHRINKAGE	EMBANKMENT	BALANCE WASTE (+) SHORTAGE (-)
LOCATION	CU YD	CU YD	CU YD	CU YD
STA 8+05 TO STA 13+35	655	490	1255	-765

TOTALS
 EARTH EXCAVATION = 655 C.Y.
 FURNISHED EXCAVATION = 765 C.Y.

SEEDING, CLASS 2 - 25000200		
STATION TO	STATION	ACRE
STA 8+05 LT	STA 13+35 LT	0.22
STA 8+05 RT	STA 13+35 RT	0.28
TOTAL		0.50

AGGREGATE SURFACE COURSE, TYPE B - 40200800		
STATION TO	STATION	TON
STA 8+05	STA 8+35	29
STA 8+35	STA 10+30.61	195
STA 8+89.40 LT (PRIVATE DR)		21
STA 9+00 RT (MAILBOX)		5
STA 11+22.36	STA 12+93.54	170
STA 12+93.54	STA 13+35	40
TOTAL		460

HEAVY DUTY EROSION CONTROL BLANKET - 25100635		
STATION TO	STATION	FOOT
STA 11+10 RT	STA 13+00 RT	296
TOTAL		296

PIPE CULVERTS, CLASS D, TYPE 1 24" - 54200229		
STATION TO	STATION	FOOT
STA 8+71.5	STA 9+07.5	36
TOTAL		36

TEMPORARY EROSION CONTROL SEEDING - 28000250		
STATION TO	STATION	POUND
STA 8+05 LT	STA 13+35 LT	176
STA 8+05 RT	STA 13+35 RT	224
TOTAL		400

MOBILIZATION - 67100100		
STATION		L SUM
THROUGHOUT PROJECT		1
TOTAL		1

TEMPORARY DITCH CHECKS - 28000300		
STATION		FOOT
STA 10+00 LT		14
STA 10+00 RT		14
STA 11+50 LT		14
STA 11+50 RT		14
STA 12+50 RT		14
TOTAL		70

TRAFFIC CONTROL AND PROTECTION, STANDARD BLR 21 - 70101830		
STATION		L SUM
THROUGHOUT PROJECT		1
TOTAL		1

INLET AND PIPE PROTECTION - 28000500		
STATION		EACH
STA 8+71.5, 26' LT		1
TOTAL		1

TERMINAL MARKER - DIRECT APPLIED 78201000		
STATION		EACH
STA 10+28.5 LT		1
STA 10+28.5 RT		1
STA 11+24.5 LT		1
STA 11+24.5 RT		1
TOTAL		4



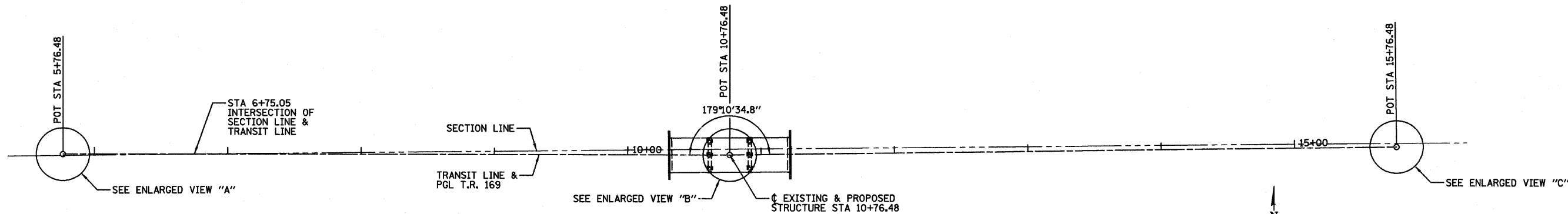
USER NAME = #USER#	DESIGNED - JML	REVISED -
	DRAWN - JJO	REVISED -
PLOT SCALE = #SCALE#	CHECKED - MSW	REVISED -
PLOT DATE = #DATE#	DATE - 02/06/12	REVISED -

STATE OF ILLINOIS
 DEPARTMENT OF TRANSPORTATION

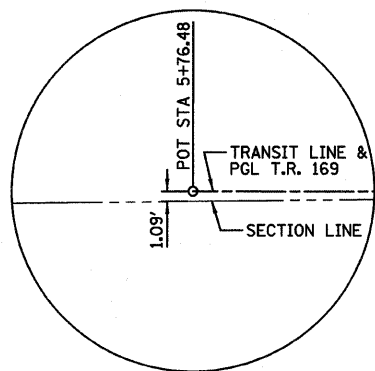
SUMMARY OF QUANTITIES AND
 SCHEDULE OF QUANTITIES

SCALE: SHEET NO. OF SHEETS STA. TO STA.

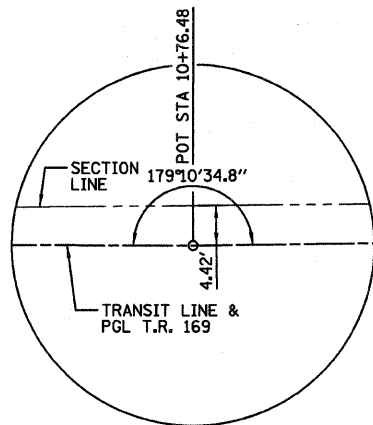
T.R.	SECTION	COUNTY	TOTAL SHEETS	SHEET NO.
169	09-20110-02-BR	LIVINGSTON	17	3
CONTRACT NO. 87496				
FED. ROAD DIST. NO. ILLINOIS FED. AID PROJECT				



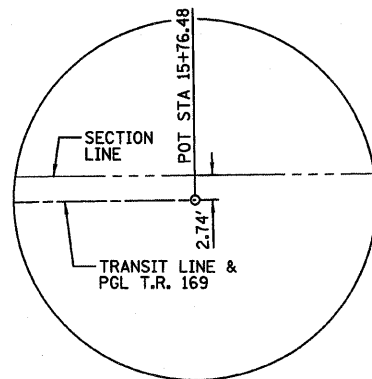
STATION	NORTHING	EASTING
5+76.48	1510914.692	878067.902
6+75.05	1510914.584	878166.475
10+76.48	1510914.143	878567.902
15+76.48	1510920.781	879067.858



ENLARGED VIEW A



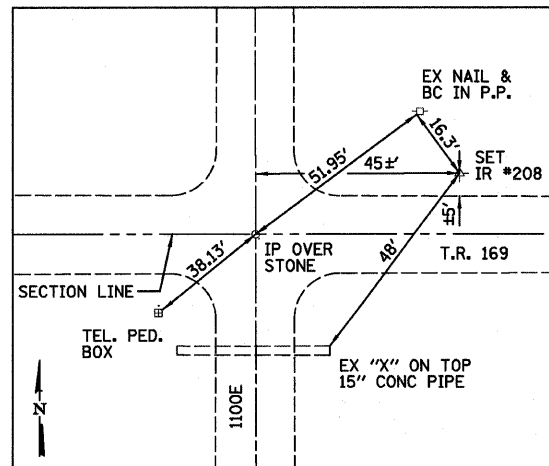
ENLARGED VIEW B



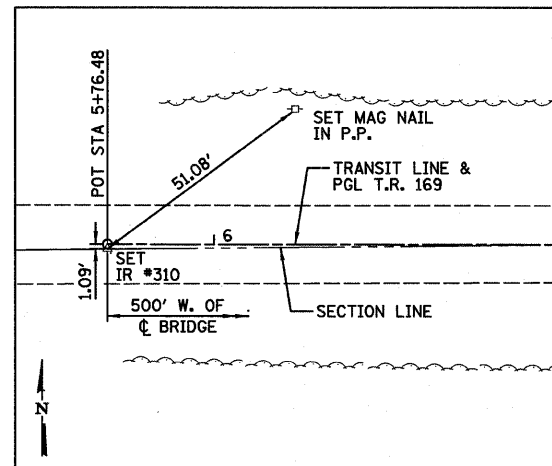
ENLARGED VIEW C

BENCHMARK:
 *1001, CENTER HEADWALL BOX CULVERT
 200'± EAST OF BRIDGE
 STA 12+99.23/13.07' RT
 ELEVATION = 666.650

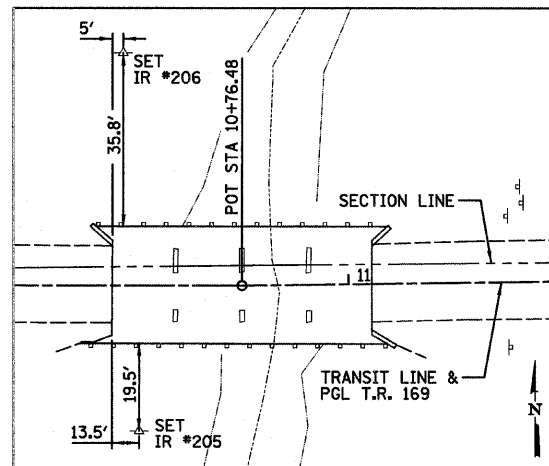
BENCHMARK:
 *1003, S. FACE POWER POLE 150'± W. OF BRIDGE
 @ NE CORNER OF T.R. 169 & PRIVATE ENTRANCE N.
 STA 9+02.02/33.40' LT.
 ELEVATION = 666.196



SET IR #208
 N=1510925.469
 E=877538.335
 ELEV=670.930

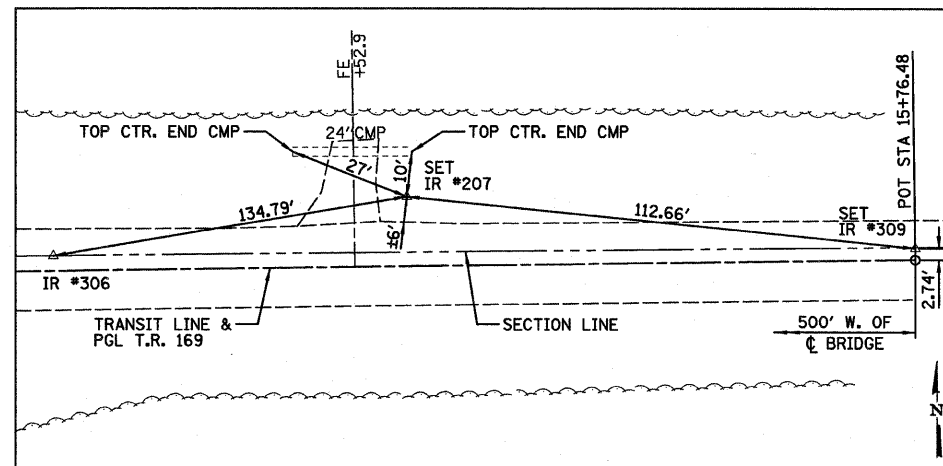


SET IR #310
 N=1510913.607
 E=878067.904



SET IR #206
 STA 10+50.27/51.61' LT
 N=1510965.782
 E=878541.748
 ELEV=664.740

SET IR #205
 STA 10+53.80/32.60' RT
 N=1510881.565
 E=878545.185
 ELEV=664.930



SET IR #207
 STA 14+64.53/15.45' LT
 N=1510934.742
 E=878955.713
 ELEV=666.180

SET IR #309
 N=1510923.520
 E=879067.811



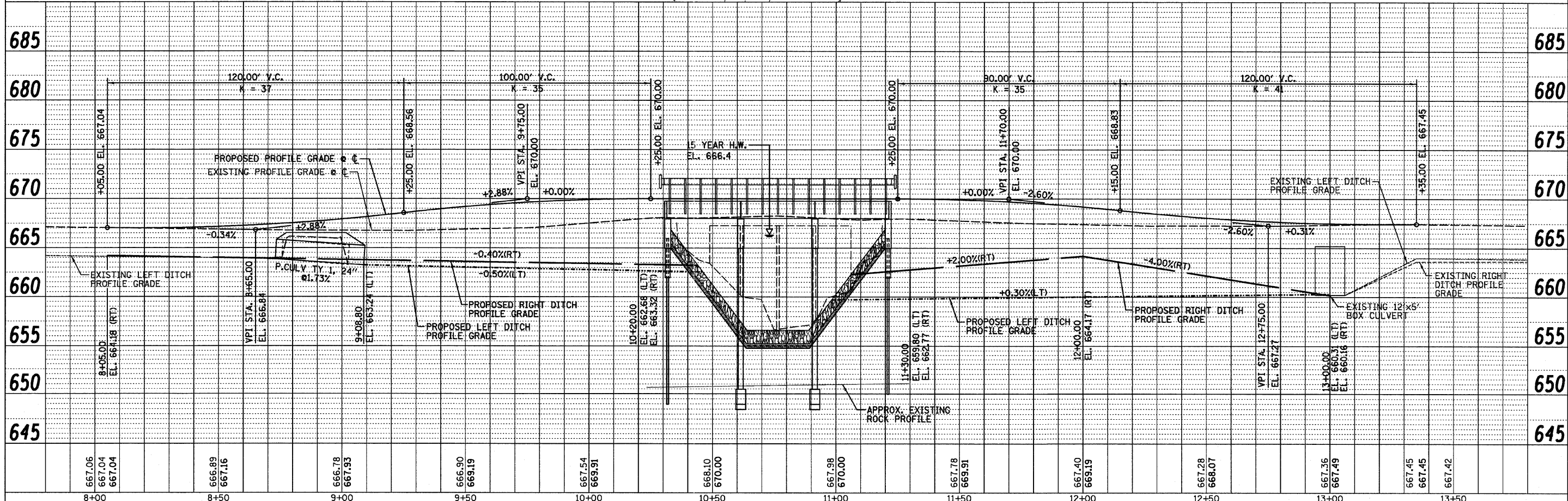
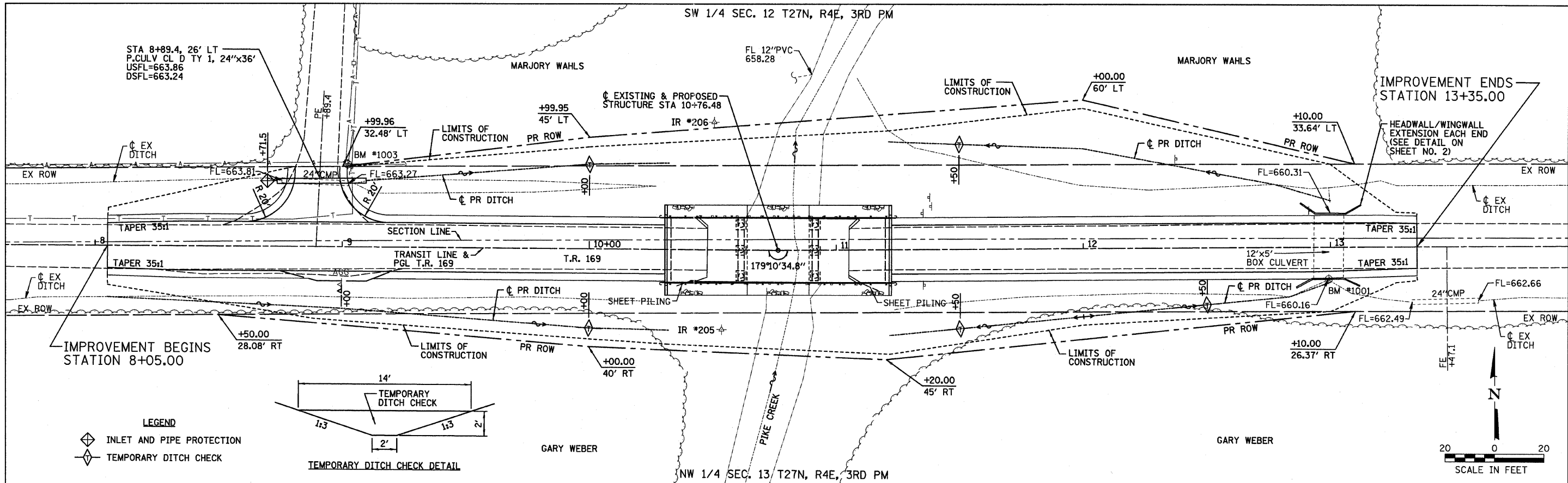
USER NAME = #USER#	DESIGNED - JML	REVISED -
PLOT SCALE = #SCALE#	DRAWN - JJO	REVISED -
PLOT DATE = #DATE#	CHECKED - MSW	REVISED -
	DATE - 02/06/12	REVISED -

STATE OF ILLINOIS
 DEPARTMENT OF TRANSPORTATION

ALIGNMENT, SURVEY TIES AND BENCHMARKS

SCALE: SHEET NO. OF SHEETS STA. TO STA.

T.R.	SECTION	COUNTY	TOTAL SHEETS	SHEET NO.
169	09-20110-02-BR	LIVINGSTON	17	4
CONTRACT NO. 87496				
FED. ROAD DIST. NO. ILLINOIS FED. AID PROJECT				



DATE	BY
REVISIONS	NO.
APPROVED	DATE
NOTED	DATE
NO. 1	DATE
NO. 2	DATE
NO. 3	DATE
NO. 4	DATE
NO. 5	DATE
NO. 6	DATE
NO. 7	DATE
NO. 8	DATE
NO. 9	DATE
NO. 10	DATE

DATE	BY
REVISIONS	NO.
APPROVED	DATE
NOTED	DATE
NO. 1	DATE
NO. 2	DATE
NO. 3	DATE
NO. 4	DATE
NO. 5	DATE
NO. 6	DATE
NO. 7	DATE
NO. 8	DATE
NO. 9	DATE
NO. 10	DATE

Farnsworth GROUP, INC.
2709 McGraw Drive
Bloomington, Illinois 61704
309/663-8435, 309/663-1571 fax

DESIGNED - CEE
CHECKED - JML
DRAWN - JJO
CHECKED - MSW

REVISED
REVISED
REVISED
REVISED

STATE OF ILLINOIS
DEPARTMENT OF TRANSPORTATION

PLAN & PROFILE

T.R.	SECTION	COUNTY	TOTAL SHEETS	SHEET NO.
169	09-20110-02-BR	LIVINGSTON	17	5
CONTRACT NO. 87496			ILLINOIS FED. AID PROJECT	

SCALE: SHEET NO. OF SHEETS STA. TO STA.

Benchmarks: BM #1001 Cut "□" in center South Headwall of box culvert ±200' East of bridge, Station 12+99.23/13.07' RT., Elevation 666.650.
 BM #1003 Cotton Picker Spindle set in South face of power pole, ±150' West of bridge ± Northeast corner of Road 1300N & private entrance, Station 9+02.02/33.40' LT., Elevation 666.196.

Existing Structure: S.N. 053-3309 was originally constructed in 1945. The structure consists of a four span continuous steel beam superstructure with closed concrete abutments and rectangular concrete pier columns. The back to back abutment dimension measures ±59'-0" and the width measures ±26'-0". The span lengths measure ±14'-9", ±14'-9", ±14'-9" and ±14'-9". The structure is to be replaced during road closure.

No Salvage.

DESIGN SPECIFICATIONS

AASHTO 2002 Standard Specifications for Highway Bridges

LOADING HS20-44

Allow 25#²/sq. ft. for future wearing surface.

DESIGN STRESSES

FIELD UNITS

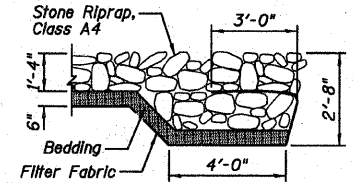
f'_c = 3,500 psi (Cast-In-Place Concrete)
 f_y = 60,000 psi (Reinforcement)

PRECAST UNITS

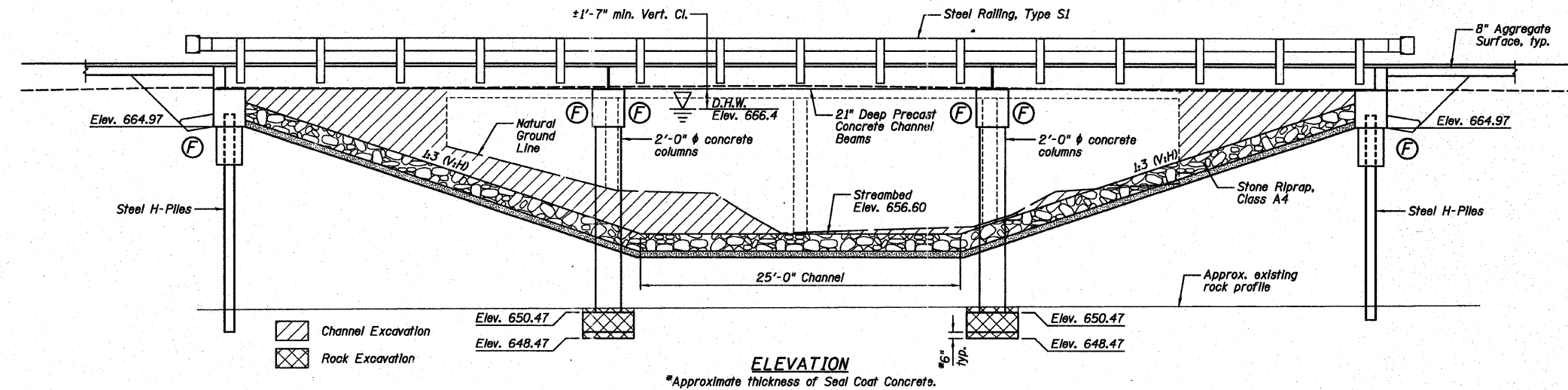
f'_c = 4,500 psi
 f_y = 60,000 psi (Reinforcement)

SEISMIC DATA

Seismic Performance Category (SPC) = A
 Bedrock Acceleration Coefficient (A) = 0.043
 Site Coefficient (S) = 1.0



SECTION A-A



ELEVATION

*Approximate thickness of Seal Coat Concrete.

WATERWAY INFORMATION

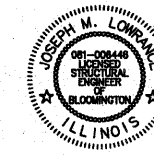
Drainage Area = 28.2 Sq. Mi.		Low Grade Elev. 667.06 ft. @ Sta. 8+00					
Flood Yr.	Freq.	Q	Opening	Sq. Ft.	Nat. Exlst.	Head - Ft. Exlst.	Headwater El. Prop.
Design	15	2910	454	626	666.4	0.8	667.2
Base	100	4889	454	626	667.1	1.0	668.1
Overtopping							
Max. Calc.							

10 Yr. Velocity = 5.61 ft./sec. (Proposed)
 10 Yr. Velocity = 6.65 ft./sec. (Existing)

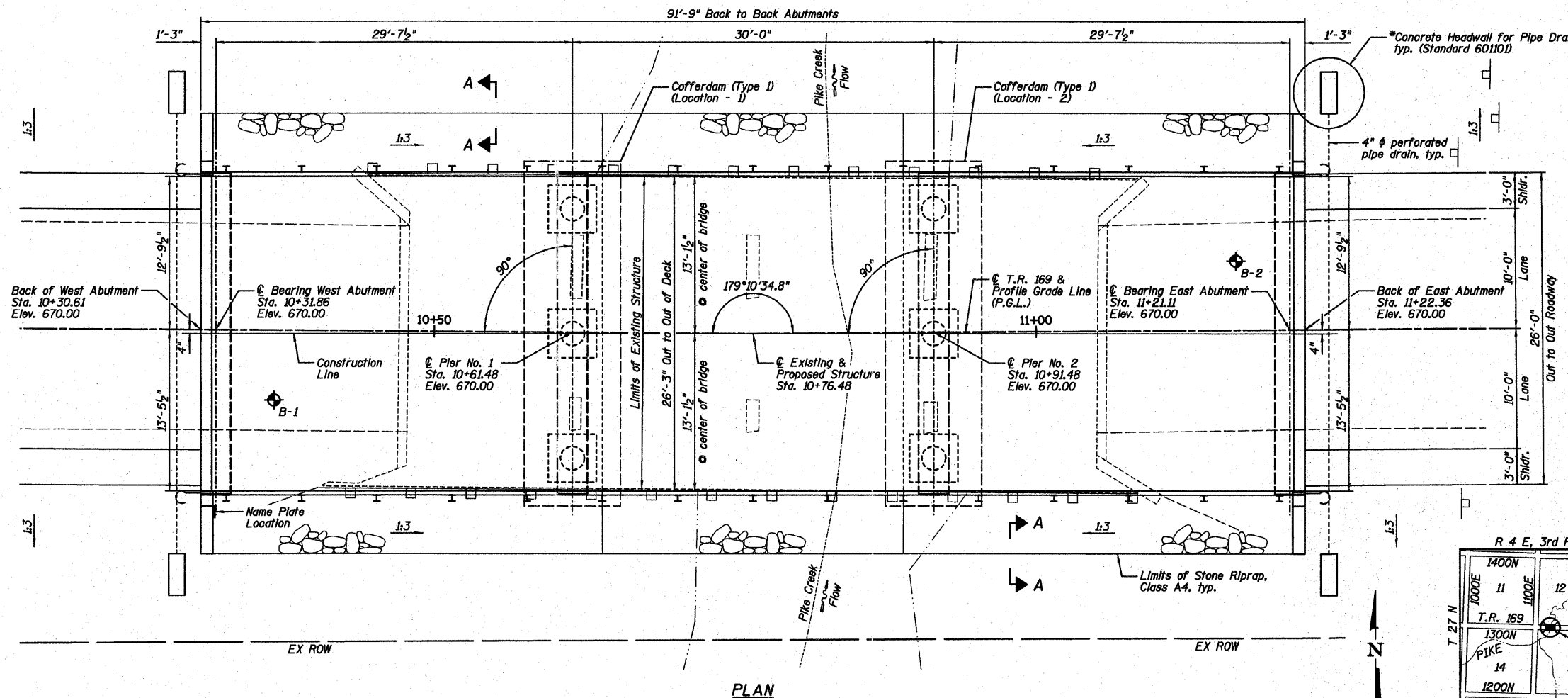
INDEX OF SHEETS

SHEET NO.	TITLE
B1	GENERAL PLAN AND ELEVATION
B2	GENERAL DATA
B3	PRECAST CONCRETE BRIDGE SLAB
B4	STEEL RAILING, TYPE S1
B5	ABUTMENTS
B6	PIERS
B7	HP PILE DETAILS
B8-B9	SOIL BORING LOGS

I certify that to the best of my knowledge, this bridge design is structurally adequate for the design loading shown on the plans. The design is an economical one for the style of structure and complies with requirements of the current "AASHTO Standard Specifications for Highway Bridges".

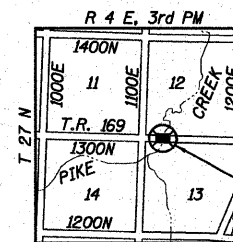


Joseph M. Lowrance
 Date 02-06-12
 JOSEPH M. LOWRANCE
 ILLINOIS STRUCTURAL ENGINEER
 NO. 081-006446
 Exp. Date 11/30/12



PLAN

* Included in cost of Pipe Underdrains for Structures.



LOCATION SKETCH

GENERAL PLAN AND ELEVATION
T.R. 169 OVER PIKE CREEK
SECTION 09-20110-02-BR
LIVINGSTON COUNTY
STA. 10+76.48
STRUCTURE NO. 053-4201

Farnsworth
 GROUP, INC.
 2709 McGraw Drive
 Bloomington, Illinois 61704
 309/863-8495, 309/863-1571 fax

DESIGNED - CEE	REVISOR
CHECKED - JML	REVISOR
DRAWN - DJM	REVISOR
CHECKED - MSW	REVISOR

STATE OF ILLINOIS
DEPARTMENT OF TRANSPORTATION

SHEET NO. B1 OF 9 SHEETS

T.R.	SECTION	COUNTY	TOTAL SHEETS	SHEET NO.
169	09-20110-02-BR	LIVINGSTON	17	6

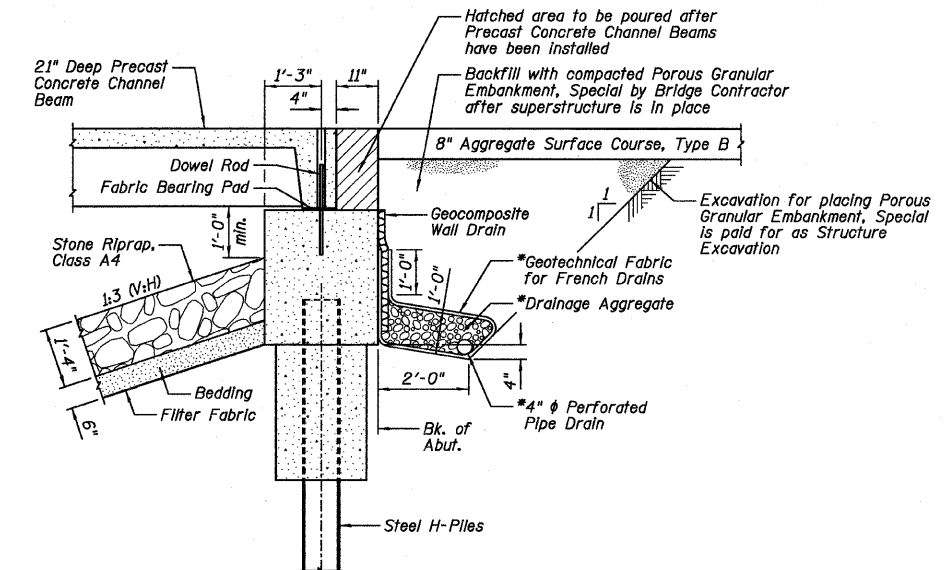
CONTRACT NO. 87496
 ILLINOIS FED. AID PROJECT

TOTAL BILL OF MATERIAL

ITEMS	UNITS	SUPER	SUB	TOTAL
Channel Excavation	Cu. Yd.		340	340
Stone Riprap, Class A4	Sq. Yd.		368	368
Filter Fabric	Sq. Yd.		368	368
Removal of Existing Structures	Each	1		1
Structure Excavation	Cu. Yd.		80	80
Cofferdam Excavation	Cu. Yd.		80	80
Rock Excavation For Structures	Cu. Yd.		9	9
Cofferdam (Type 1) (Location - 1)	Each		1	1
Cofferdam (Type 1) (Location - 2)	Each		1	1
Concrete Structures	Cu. Yd.		53	53
Seal Coat Concrete	Cu. Yd.		1.8	1.8
Concrete Encasement	Cu. Yd.		2.8	2.8
Precast Concrete Bridge Slab	Sq. Ft.	2356		2356
Reinforcement Bars, Epoxy Coated	Pound		6630	6630
Steel Railing, Type S1	Foot	184		184
Furnishing Steel Piles HP10X42	Foot		116	116
Driving Piles	Foot		116	116
Test Pile Steel HP10X42	Each		1	1
Name Plates	Each	1		1
Geocomposite Wall Drain	Sq. Yd.		20	20
Porous Granular Embankment, Special	Cu. Yd.		47	47
Pipe Underdrains For Structures 4"	Foot		110	110

PIKE CREEK
 BUILT 20__ BY
 LIVINGSTON COUNTY
 SECTION 09-20110-02-BR
 STATION 10+76.48
 STR. NO. 053-4201 LOADING HS20

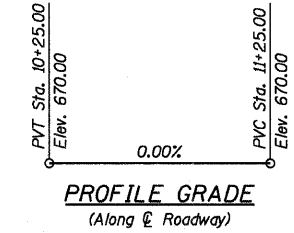
NAME PLATE
 See Standard 515001



SECTION THRU EAST ABUTMENT
 (Similar for West Abutment)

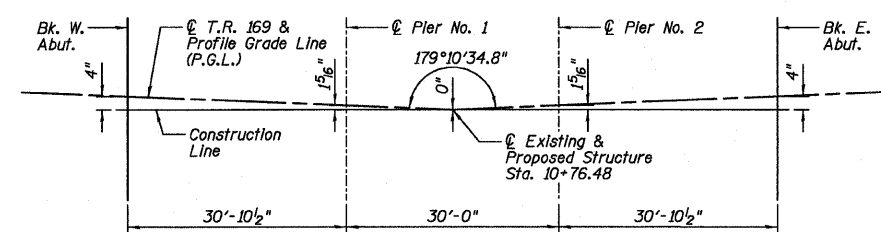
NOTES:

- 1.) *Included in cost of Pipe Underdrains for Structures.
- 2.) All drainage system components shall extend to 2'-0" from the end of each wingwall except an outlet pipe shall extend until intersecting with the side slopes. The pipes shall drain into concrete headwalls. (See Article 601.05 of the Standard Specifications and Highway Standard 601101).

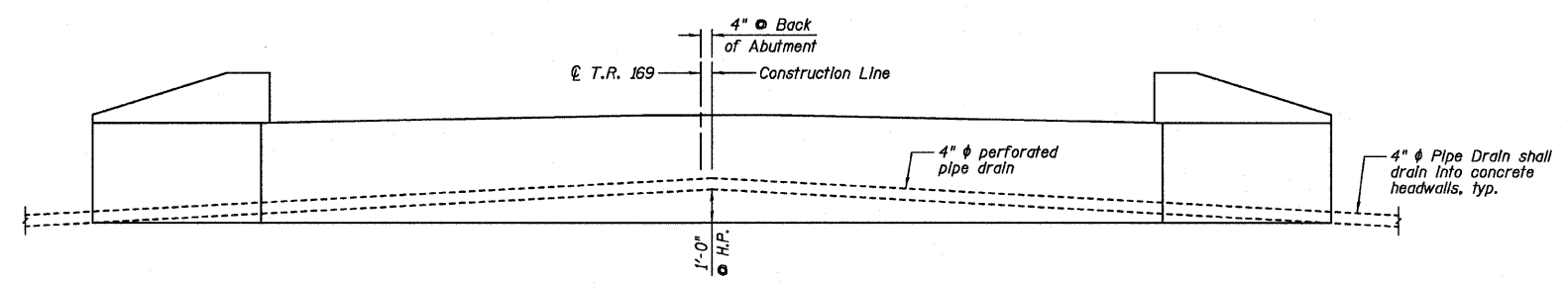


GENERAL NOTES:

- 1.) Reinforcement bars shall conform to the requirements of ASTM A 706 Gr 60.
- 2.) Reinforcement bars designated (E) shall be epoxy coated.
- 3.) Layout of the slope protection system may be varied to suit ground conditions in the field as directed by the Engineer.
- 4.) Excavation behind existing abutment walls shall be performed to balance front and back soil pressure before removing the existing superstructure.

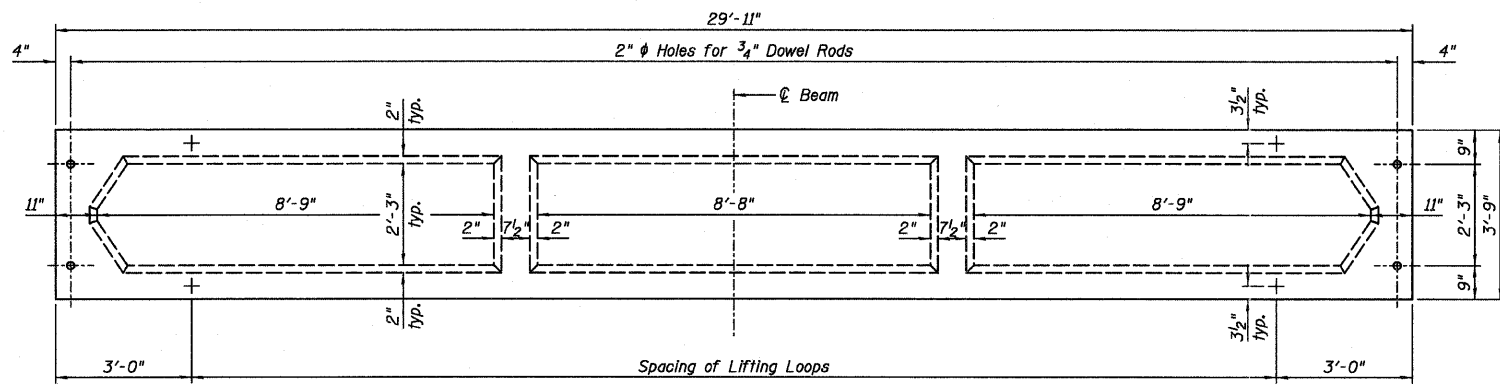


OFFSET SKETCH

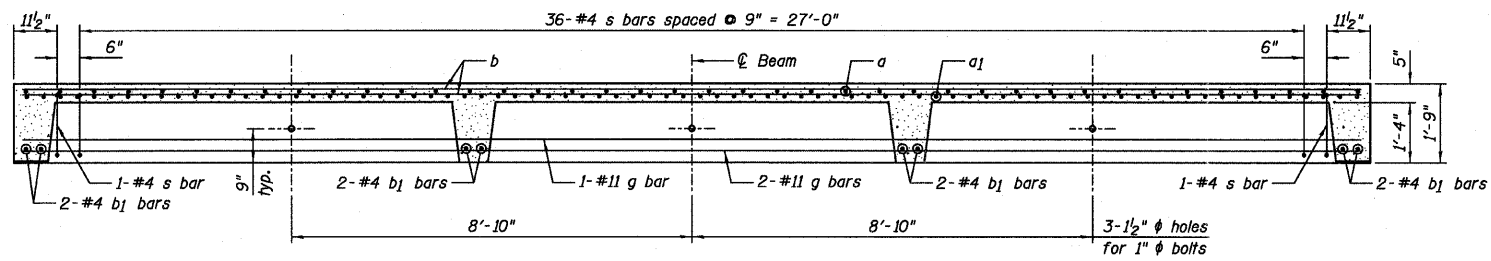


ABUTMENT ELEVATION, TYPICAL DRAIN DETAIL
 (Looking East)

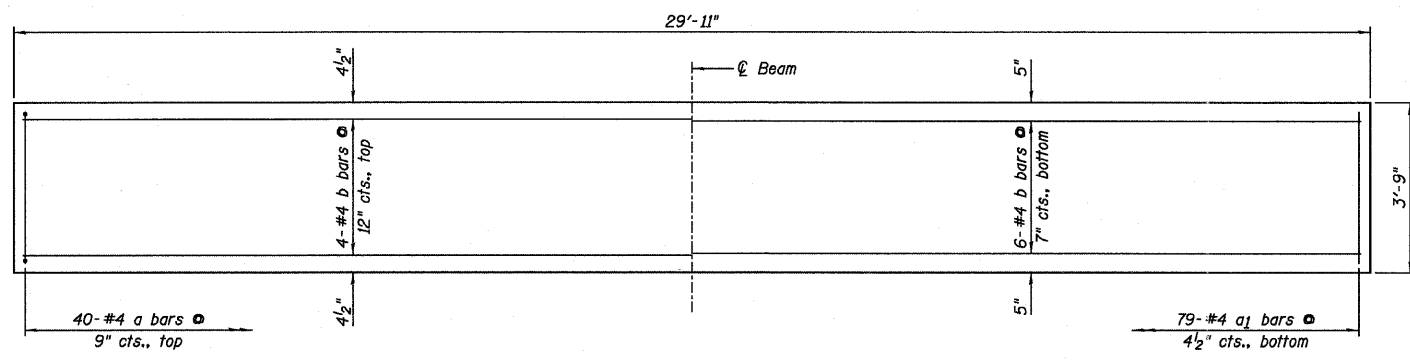
Farnsworth GROUP, INC. 2709 McDraw Drive Bloomington, Illinois 61704 309/893-9435, 309/893-1571 fax	DESIGNED - CEE	REVISED	STATE OF ILLINOIS DEPARTMENT OF TRANSPORTATION	GENERAL DATA		T.R.	SECTION	COUNTY	TOTAL SHEETS	SHEET NO.
	CHECKED - JML	REVISED		169	09-20110-02-BR	LIVINGSTON	17	7		
DATE - 02/06/12	DRAWN - DJM	REVISED		SHEET NO. B2 OF 9 SHEETS		CONTRACT NO. 87496		ILLINOIS FED. AID PROJECT		
	CHECKED - MSW	REVISED						24-8649		



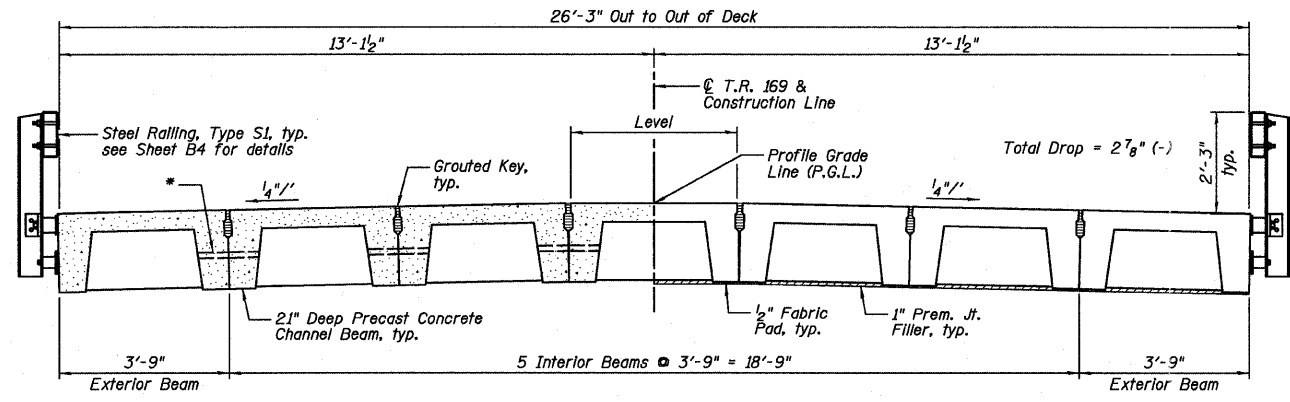
PLAN



LONGITUDINAL SECTION



SLAB REINFORCEMENT PLAN

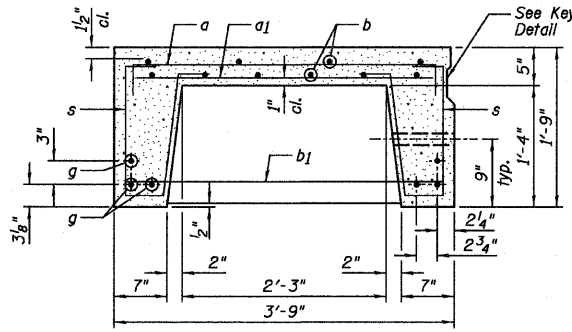


HALF SECTION

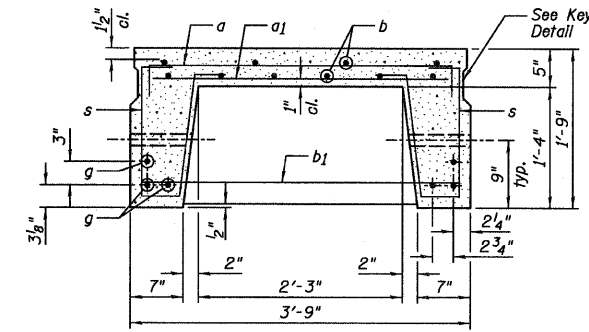
CROSS SECTION

HALF END VIEW

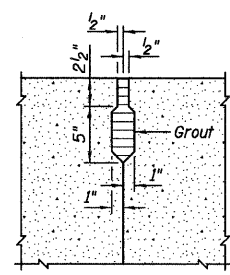
*1 1/2" diameter hole for 1" x 18" bolts with bevel washers under head and nut, typ. Assemblies shall be hot dipped galvanized in accordance with AASHTO Designation M232.



SECTION THRU EXTERIOR BEAM

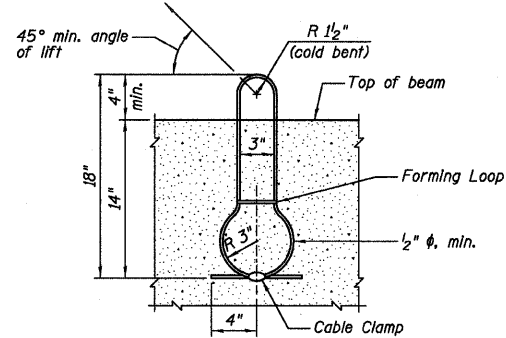


SECTION THRU INTERIOR BEAM



KEY DETAIL

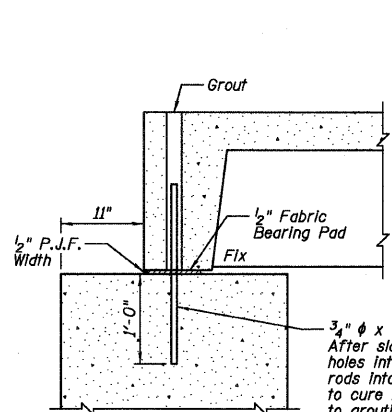
Longitudinal shear keys shall be packed with a flowable non-shrink grout. See Article 504.06 of the Standard Specifications.



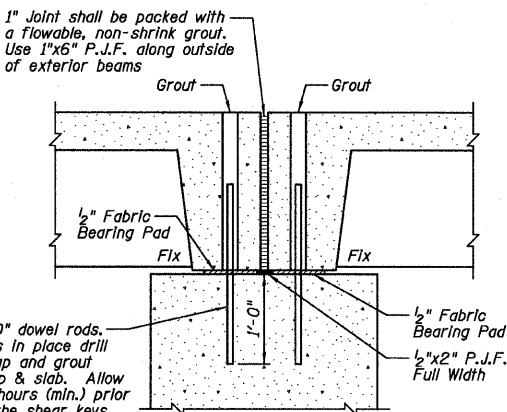
LIFTING LOOP DETAIL

BILL OF MATERIAL - PRECAST SLAB
For information of supplier of precast slab units only.

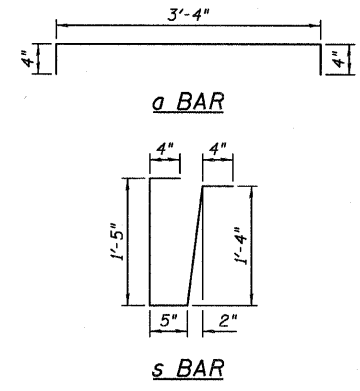
Bar	No.	Size	Length	Shape
a	40	#4	4'-0"	
a1	79	#4	3'-3"	
b	10	#4	29'-6"	
b1	8	#4	3'-6"	
g	6	#11	29'-6"	
s	78	#3	3'-10"	
Item		Unit	Quantity	
Class PC Concrete		Cu. Yd.	4.1	
Reinforcement Bars		Pound	1,547	
Total Weight		Pound	16,605	



ABUTMENT CONNECTION



PIER CONNECTION

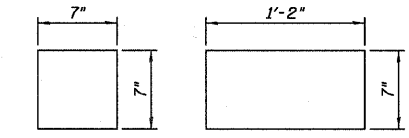


BILL OF MATERIAL

Item	Unit	Quantity
Precast Concrete Bridge Slab	Sq. Ft.	2,356

NOTES:

- Cost of reinforcement and accessories cast into slab unit, of bearing pads, furnishing drilling for, placing and grouting anchor dowels and of grouting longitudinal shear keys and transverse joints is included in the unit bid price for "Precast Concrete Bridge Slab".
- The surface of the member shall not deviate more than 1/1200 of the full length of the member from a straight line connecting the two end points on the member surfaces.
- The units shall remain on the bottom supporting forms until the concrete has attained a compressive strength of not less than 3,500 psi.
- Tack welding of stirrups to the bottom longitudinal reinforcement bars will not be permitted except as otherwise authorized in writing by the Engineer.
- Unless otherwise approved by the Engineer, lifting loops shall be 6x25 class wire rope with fiber core and shall have a minimum ultimate strength of 21,000 lbs. Loops shall be burned off after beams have been erected.
- All transverse tie assemblies (nuts, bolts and washers) shall be hot dipped galvanized in accordance with AASHTO M232.
- After beams have been erected, holes for the dowel anchors shall be drilled into the substructure and the anchor dowels shall be grouted in place, and allowed to cure a minimum of 24 hours prior to grouting of shear keys.



EXTERIOR STEM INTERIOR STEM

FABRIC BEARING PADS

1/2" thick

Farnsworth GROUP, INC.
2709 McGraw Drive
Bloomington, Illinois 61704
309/663-8435, 309/663-1571 fax

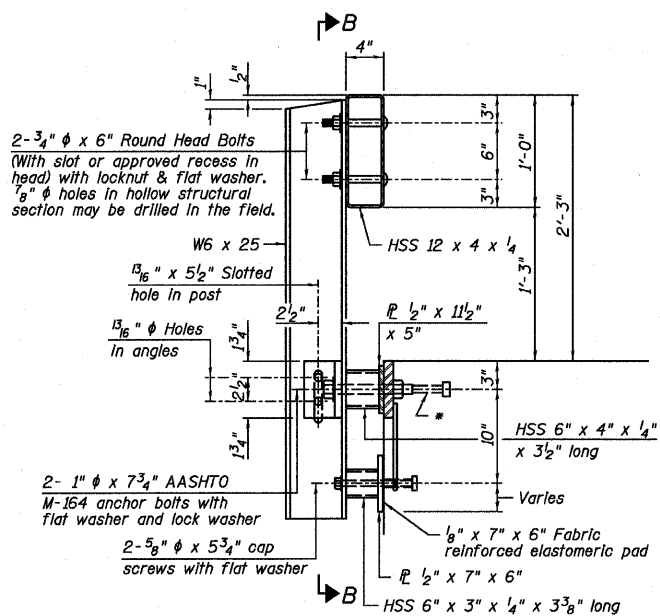
DESIGNED - CEE	REVISOR
CHECKED - JML	REVISOR
DRAWN - DJM	REVISOR
DATE - 02/06/12	CHECKED - MSW

STATE OF ILLINOIS
DEPARTMENT OF TRANSPORTATION

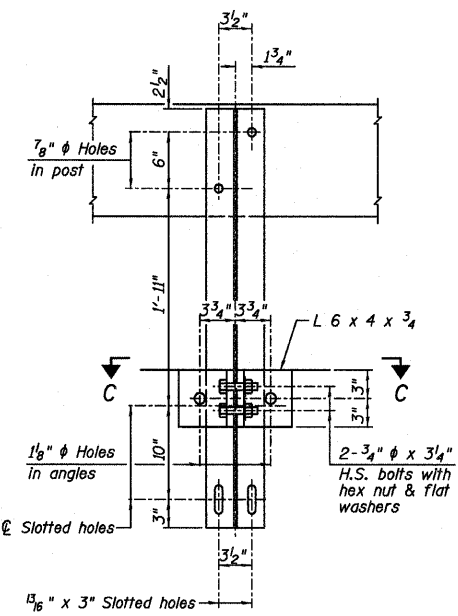
PRECAST CONCRETE BRIDGE SLAB

SHEET NO. B3 OF 9 SHEETS

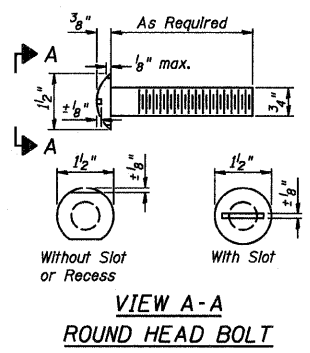
T.R.	SECTION	COUNTY	TOTAL SHEETS	SHEET NO.
169	09-20110-02-BR	LIVINGSTON	17	8
				CONTRACT NO. 87496
ILLINOIS FED. AID PROJECT				



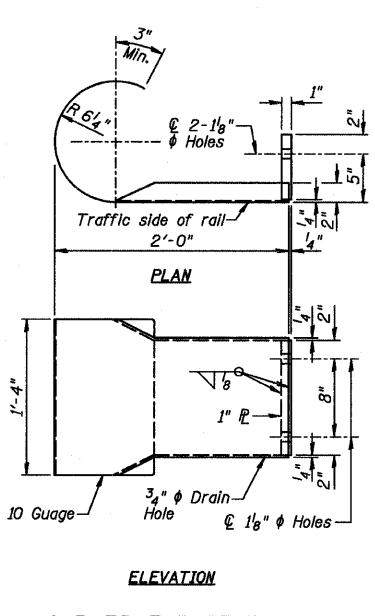
SECTION AT RAILING POST



SECTION B-B

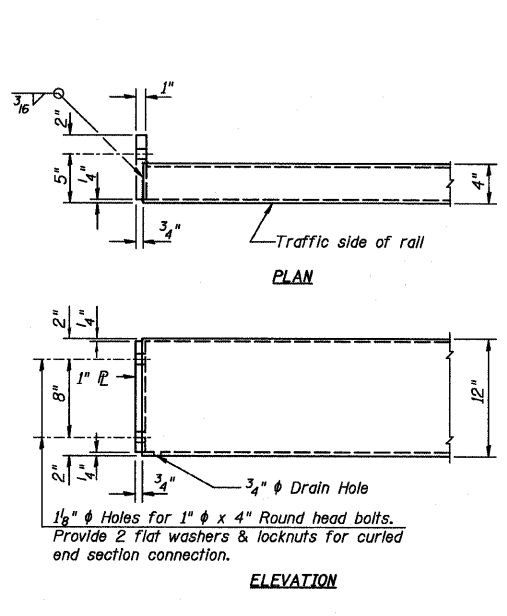


VIEW A-A ROUND HEAD BOLT



ELEVATION

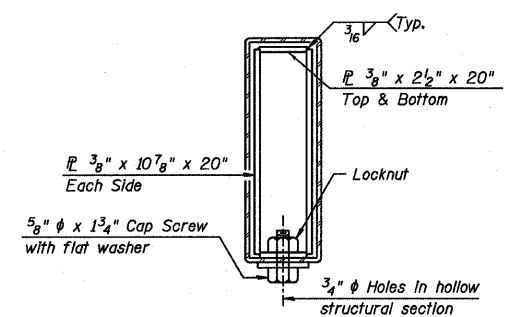
CURLED END SECTION



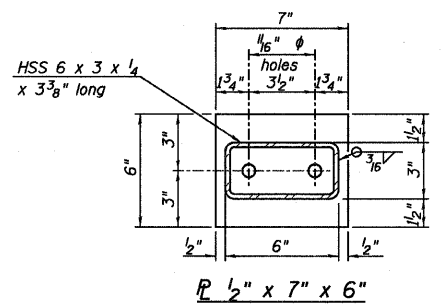
ELEVATION

END OF RAIL DETAILS

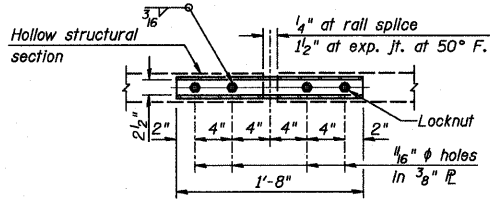
NOTE:
The cost of the curled end sections shall be included in the cost of Steel Railing, Type S1.



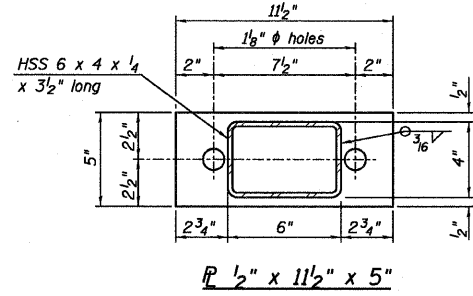
SECTIONS AT RAIL SPLICE



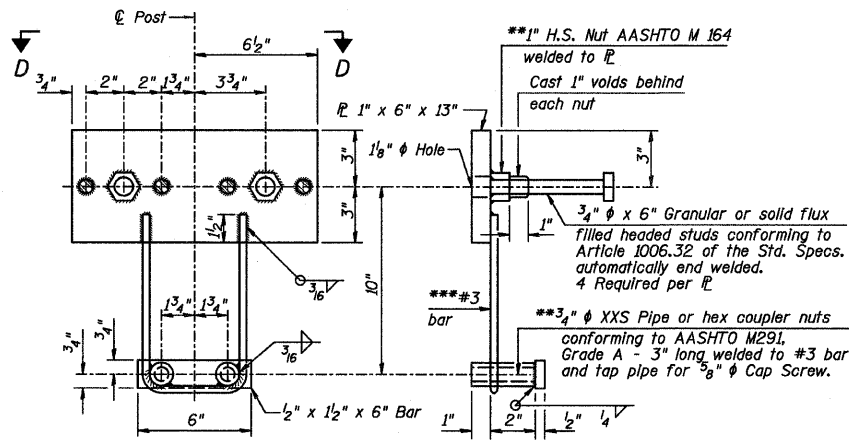
SECTION C-C



PLAN-BOTT. SPLICE TYPICAL

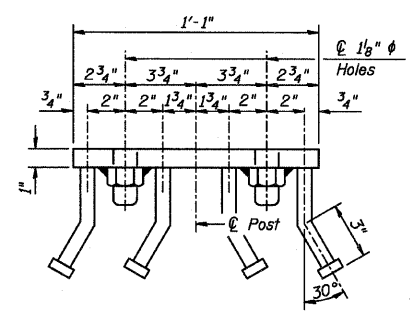


SECTION D-D



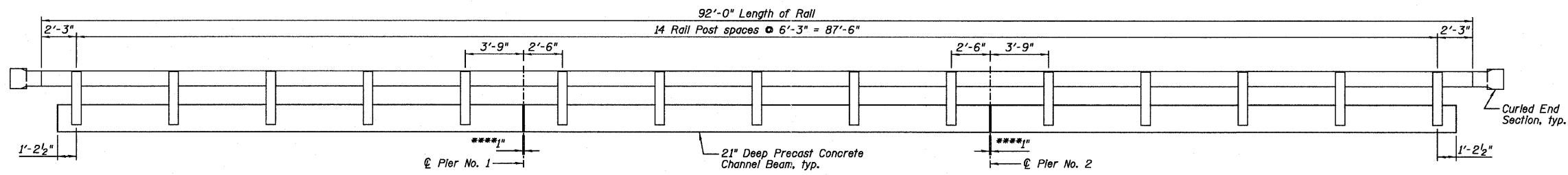
ANCHOR DEVICE

***Threaded areas shall be plugged or blocked off during casting of beam.
***Whenever the lower insert assemblies interfere with strand locations, the #3 bars shall be cut and adjusted in order to allow raising or lowering of the lower inserts. Maximum adjustment not to exceed 1/2 inch.



VIEW D-D

- NOTES:
- All field drilled holes shall be coated with an approved zinc rich paint before erection.
 - For multi-span bridges, sufficient 1/4 inch x 6 inch x 1-2 inch galvanized steel shims shall be provided to align rail between adjacent spans. Cost included with Steel Railing, Type S-1.
 - All steel rail elements shall be galvanized according to Article 509.05 of the Standard Specifications.
 - The studs of the anchor devices shall be placed below the top reinforcement bars and the outermost longitudinal reinforcement bar shall be placed directly above the studs of the rail post anchor device.



RAIL POST SPACING DETAIL

(Looking North)
****Approximate distance between Precast Concrete Channel Beams.

BILL OF MATERIAL

Item	Unit	Quantity
Steel Railing, Type S1	Foot	184

Farnsworth GROUP, INC.
2709 McDraw Drive
Bloomington, Illinois 61714
309/663-8435, 309/663-1571 fax

DESIGNED - CEE
CHECKED - JML
DRAWN - DJM
DATE - 02/06/12

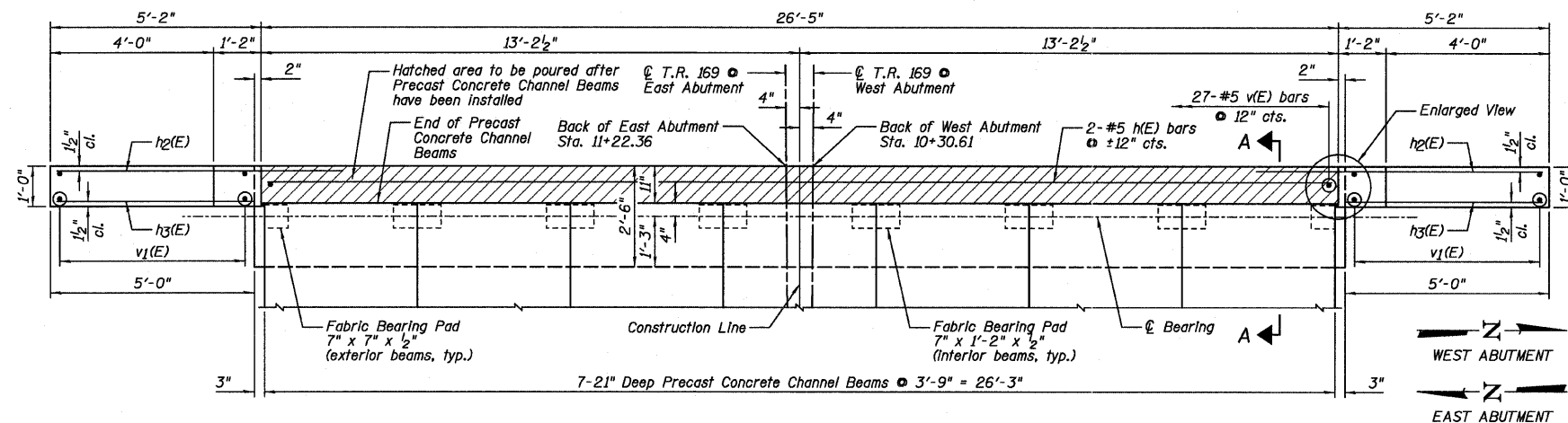
REVISOR
REVISOR
REVISOR
REVISOR

STATE OF ILLINOIS
DEPARTMENT OF TRANSPORTATION

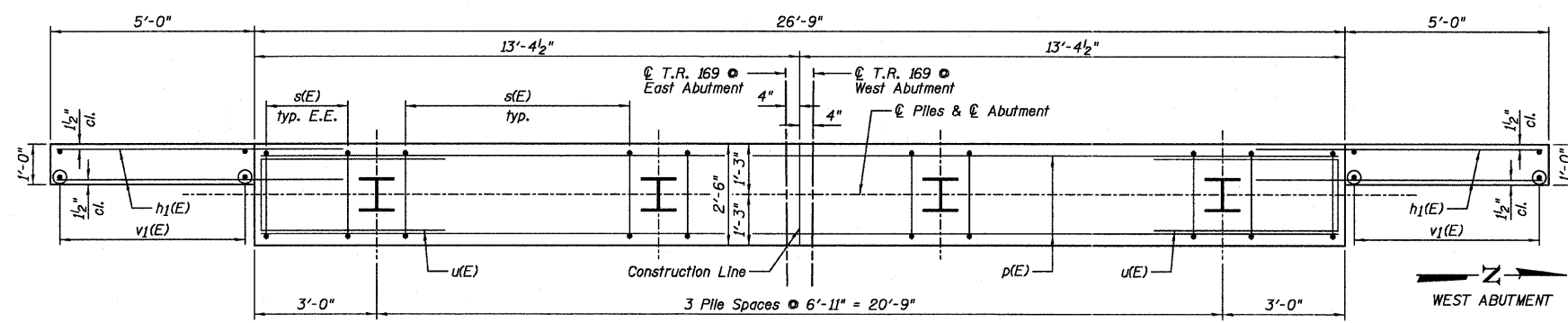
STEEL RAILING, TYPE S1

SHEET NO. B4 OF 9 SHEETS

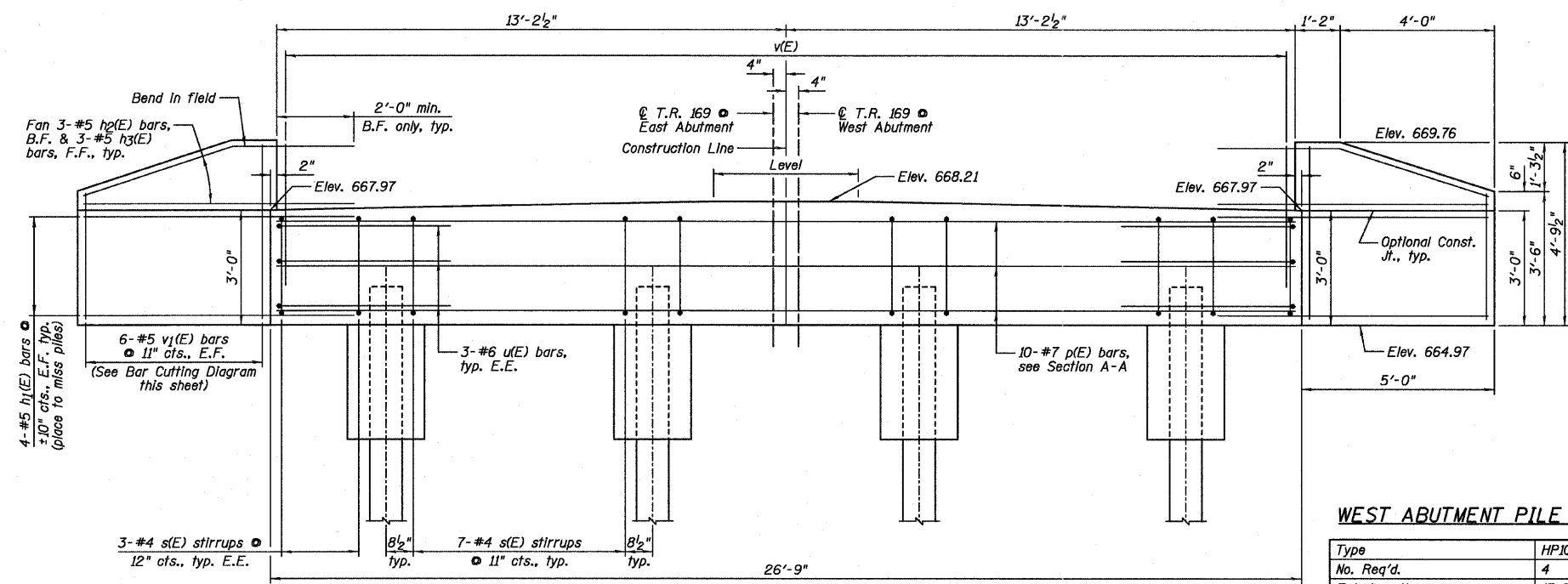
T.R.	SECTION	COUNTY	TOTAL SHEETS	SHEET NO.
169	09-20110-02-BR	LIVINGSTON	17	9
CONTRACT NO. 87496				
ILLINOIS FED. AID PROJECT				



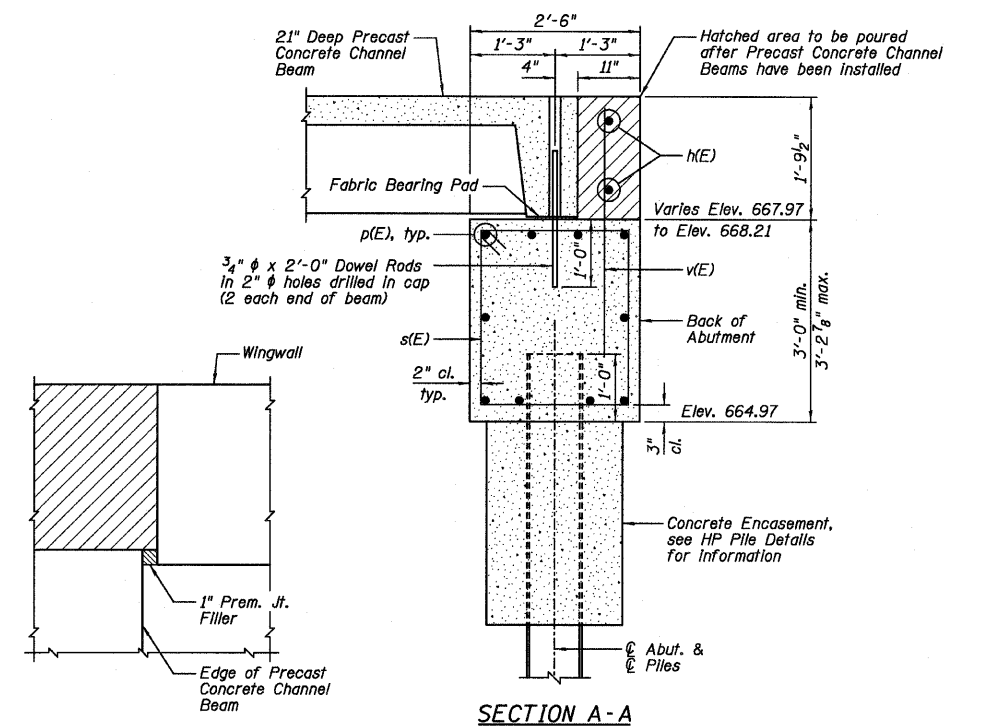
PLAN



PLAN - PILE CAP

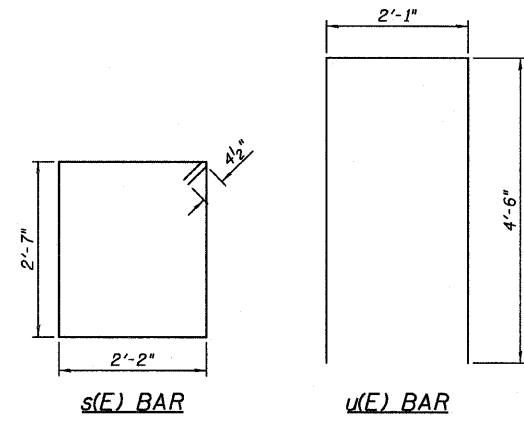


ELEVATION



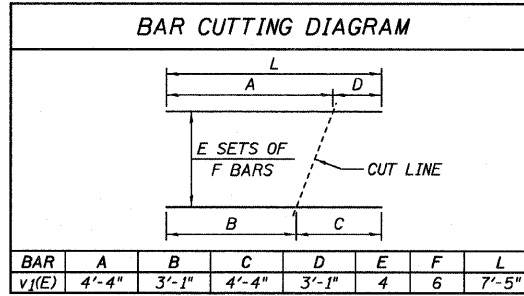
ENLARGED VIEW

SECTION A-A



s(E) BAR

u(E) BAR



BAR CUTTING DIAGRAM

TWO ABUTMENTS
BILL OF MATERIAL

Bar	No.	Size	Length	Shape
h(E)	4	#5	26'-1"	—
h1(E)	32	#5	7'-0"	—
h2(E)	12	#5	7'-3"	—
h3(E)	12	#5	4'-10"	—
p(E)	20	#7	26'-5"	—
s(E)	54	#4	10'-3"	□
u(E)	12	#6	11'-1"	□
v(E)	54	#5	3'-8"	—
v1(E)	24	#5	7'-5"	—

Item	Unit	Quantity
Porous Granular Embankment, Special	Cu. Yd.	47
Structure Excavation	Cu. Yd.	80
Concrete Structures	Cu. Yd.	22.0
Concrete Encasement	Cu. Yd.	2.8
Reinforcement Bars, Epoxy Coated	Pound	2,540
Furnishing Steel Piles HP10x42	Foot	116
Driving Piles	Foot	116
Test Pile Steel HP10x42	Each	1
Geocomposite Wall Drain	Sq. Yd.	20
Pipe Underdrains For Structures 4"	Foot	110

WEST ABUTMENT PILE DATA:

Type	HP10x42 Steel
No. Req'd.	4
Est. Length	17 feet
Nominal Required Bearing	335 kips
Allowable Resistance Available	112 kips

EAST ABUTMENT PILE DATA:

Type	HP10x42 Steel
No. Req'd.	3+1 Test Pile
Est. Length	16 feet
Nominal Required Bearing	335 kips
Allowable Resistance Available	112 kips

NOTES:

- 1.) E.E. denotes Each End, E.F. denotes Each Face, F.F. denotes Front Face & B.F. denotes Back Face.
- 2.) Order v1(E) bars full length. Cut according to Bar Cutting Diagram. Use remainder of v1(E) bars in opposite face of wingwall.

Farnsworth GROUP, INC.
2709 MacDraw Drive
Bloomington, Illinois 61704
309/653-8435, 309/653-1571 fax

DESIGNED - CEE	REVISOR
CHECKED - JML	REVISOR
DRAWN - DJM	REVISOR
CHECKED - MSW	REVISOR

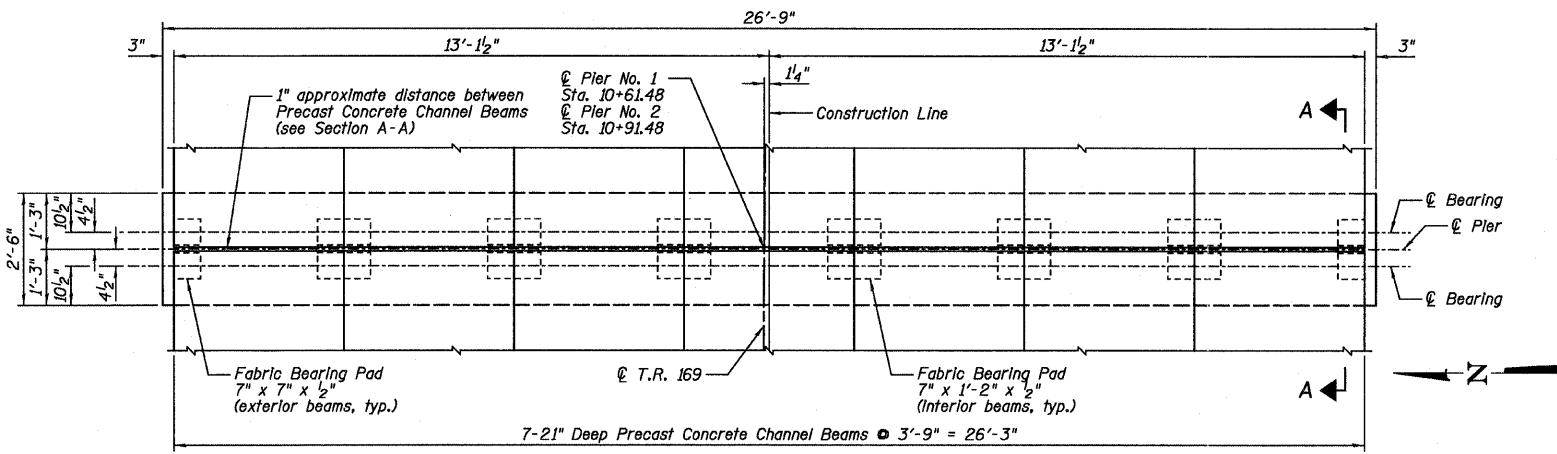
STATE OF ILLINOIS
DEPARTMENT OF TRANSPORTATION

ABUTMENTS

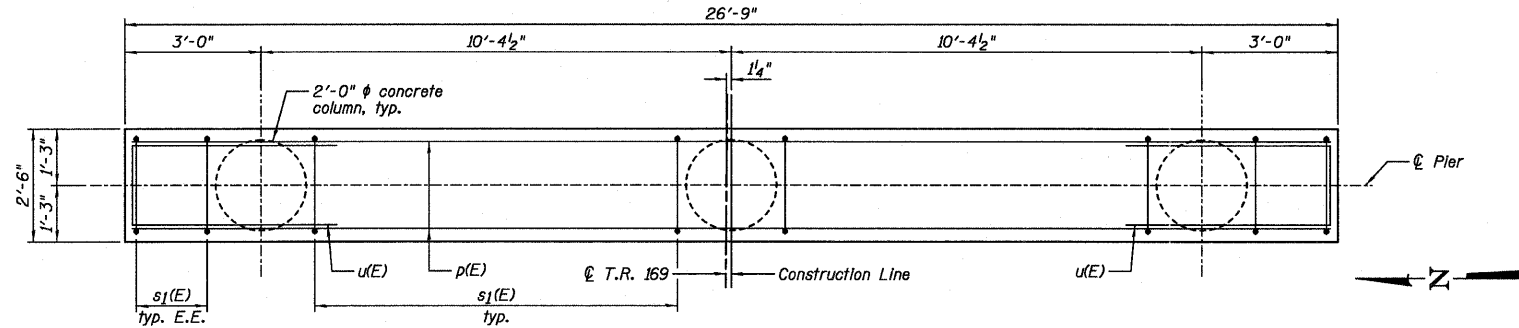
SHEET NO. B5 OF 9 SHEETS

T.R.	SECTION	COUNTY	TOTAL SHEETS	SHEET NO.
169	09-20110-02-BR	LIVINGSTON	17	10

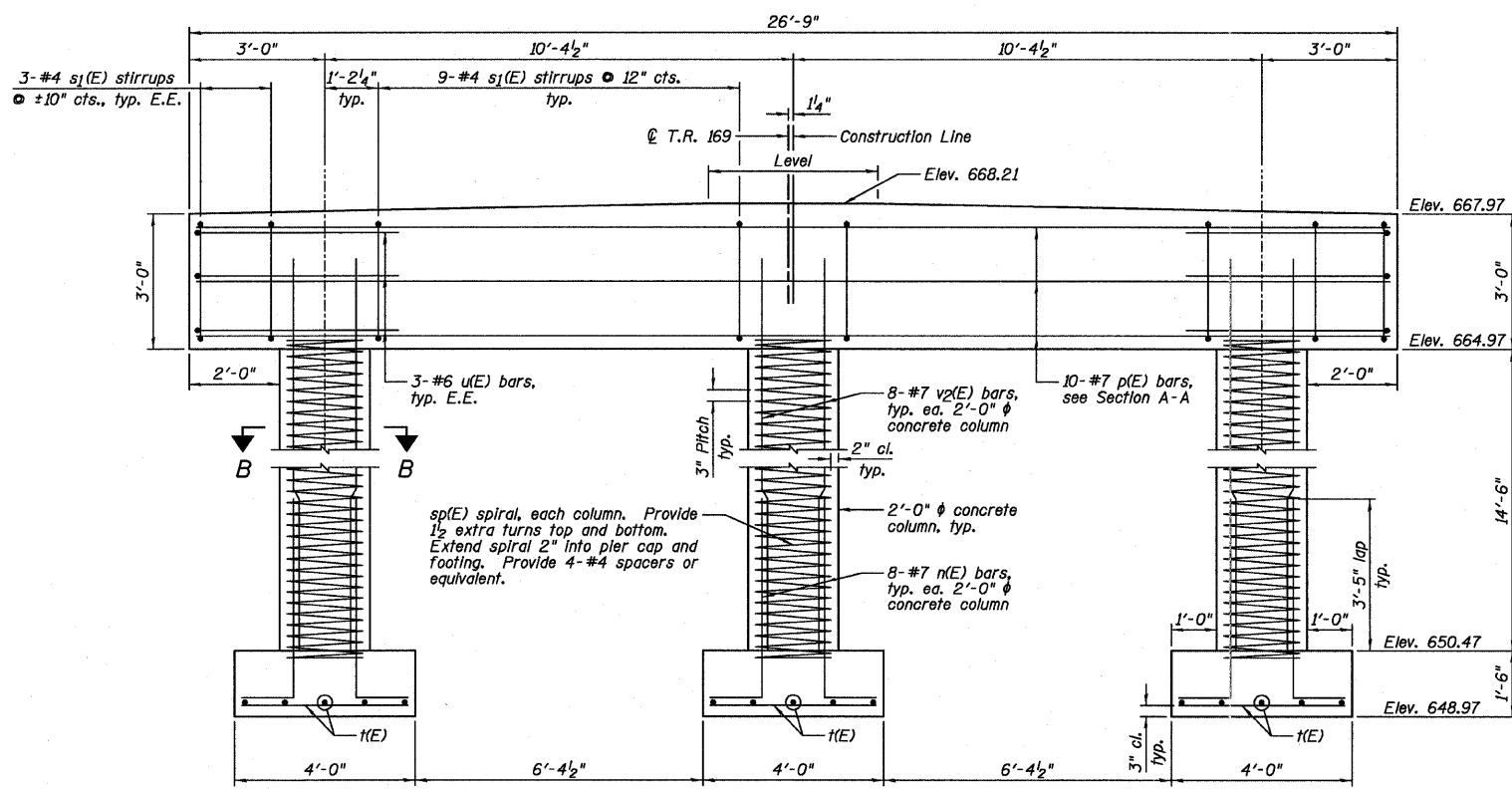
CONTRACT NO. 87496
ILLINOIS FED. AID PROJECT



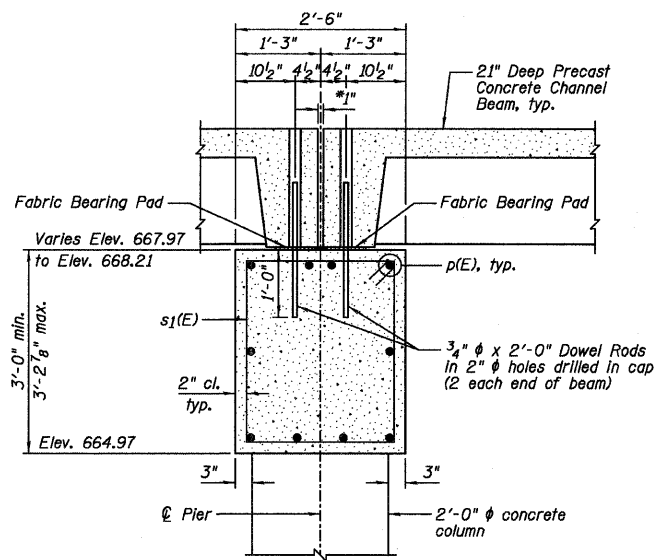
PLAN



PLAN - PIER CAP

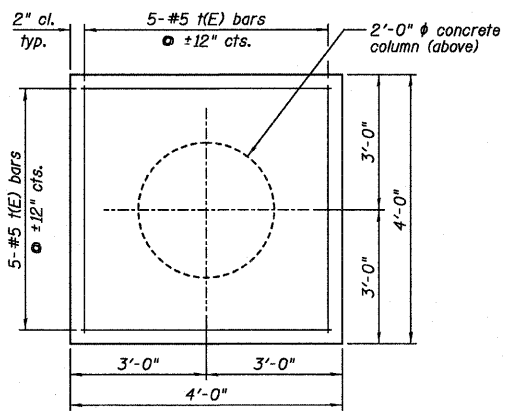
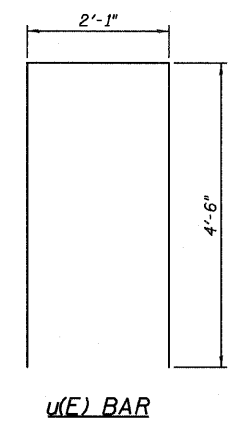
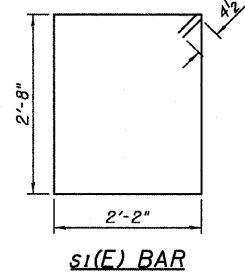
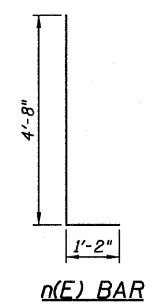


ELEVATION

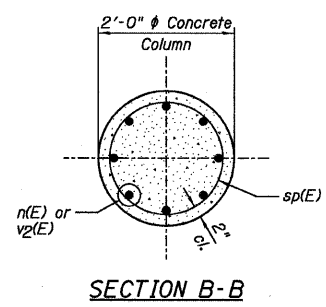


SECTION A-A

*Approximate distance between Precast Concrete Channel Beams shall be filled with non-shrink grout. 1" dimension may vary to accommodate tolerance in beam lengths.



FOOTING PLAN



SECTION B-B

NOTES:

- 1.) E.E. denotes Each End.
- 2.) Calculated maximum footing bearing pressure = 8.4 ksf (service).

TWO PIERS
BILL OF MATERIAL

Bar	No.	Size	Length	Shape
n(E)	48	#7	5'-10"	—
p(E)	20	#7	26'-5"	—
s1(E)	48	#4	10'-5"	□
sp(E)	6	#4	14'-10"	∩∩
u(E)	60	#5	3'-8"	—
v2(E)	12	#6	11'-1"	—
v2(E)	48	#7	16'-6"	—
Item	Unit	Quantity		
Cofferdam Excavation	Cu. Yd.	80		
Rock Excavation For Structures	Cu. Yd.	9		
Concrete Structures	Cu. Yd.	31.0		
Seal Coat Concrete	Cu. Yd.	1.8		
Reinforcement Bars, Epoxy Coated	Pound	4,090		

**Length is height of spiral.

Farnsworth GROUP, INC.
2709 McDraw Drive
Bloomington, Illinois 61704
309/693-9435, 309/693-1571 fax

DESIGNED - CEE
CHECKED - JML
DRAWN - DJM
DATE - 02/06/12

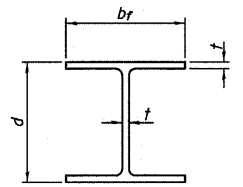
REVISOR
REVISOR
REVISOR
REVISOR

STATE OF ILLINOIS
DEPARTMENT OF TRANSPORTATION

PIERS

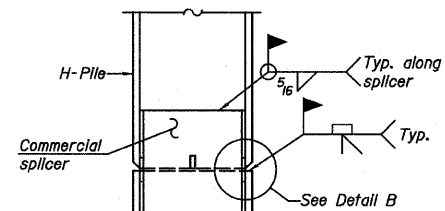
SHEET NO. B6 OF 9 SHEETS

T.R.	SECTION	COUNTY	TOTAL SHEETS	SHEET NO.
169	09-20110-02-BR	LIVINGSTON	17	11
CONTRACT NO. 87496				
ILLINOIS FED. AID PROJECT				

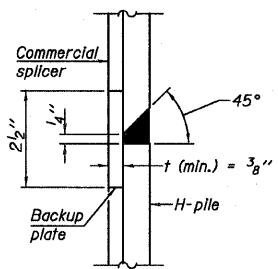


STEEL PILE TABLE

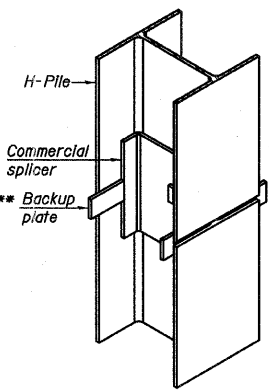
Designation	Depth d	Flange width br	Web and Flange thickness t	Encasement diameter A
HP 14x117	14 1/4"	14 7/8"	1 5/16"	30"
x102	14"	14 3/4"	1 1/16"	30"
x89	13 7/8"	14 3/4"	5/8"	30"
x73	13 5/8"	14 5/8"	1/2"	30"
HP 12x84	12 1/4"	12 1/4"	1 1/16"	24"
x74	12 1/8"	12 1/4"	5/8"	24"
x63	12"	12 1/8"	1/2"	24"
x53	11 3/4"	12"	7/16"	24"
HP 10x57	10"	10 1/4"	9/16"	24"
x42	9 3/4"	10 1/8"	7/16"	24"
HP 8x36	8"	8 1/8"	7/16"	18"



ELEVATION

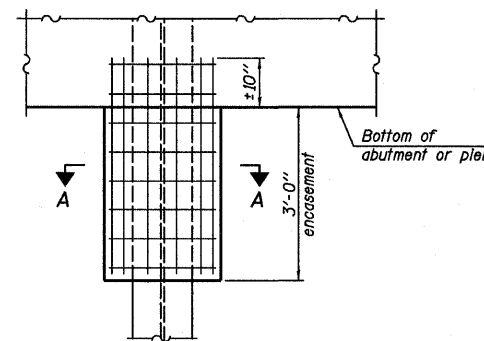


DETAIL "B"



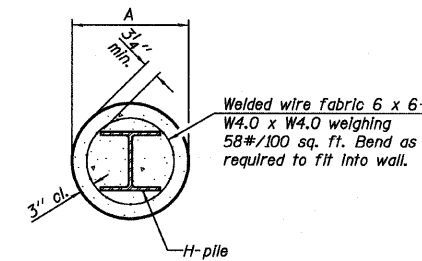
ISOMETRIC VIEW

WELDED COMMERCIAL SPLICE



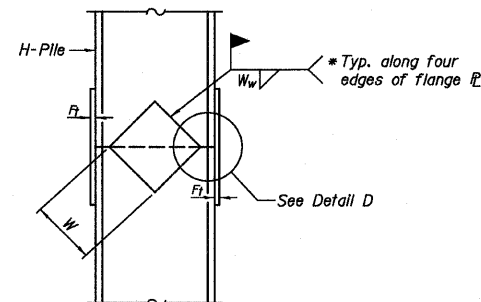
ELEVATION

PILE ENCASEMENT

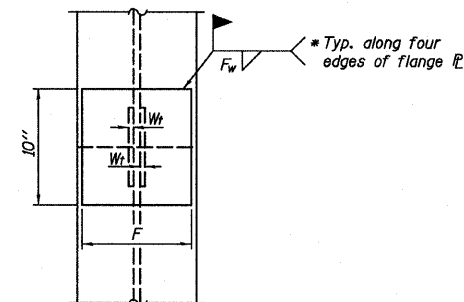


SECTION A-A

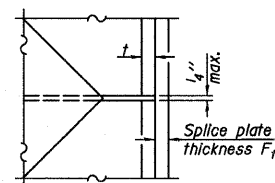
Note:
Forms for encasement may be omitted when soil conditions permit.



ELEVATION



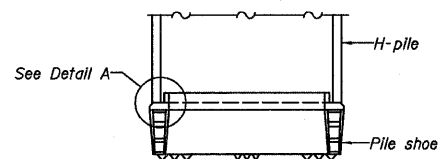
END VIEW



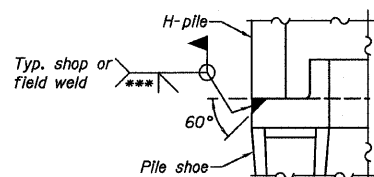
DETAIL D

WELDED PLATE FIELD SPLICE

Designation	F	Ft	Fw	W	Wt	Ww
HP 14x117	12 1/2"	1"	7/8"	7 3/4"	5 1/8"	1/2"
x102	12 1/2"	7/8"	3/4"	7 3/4"	5 1/8"	1/2"
x89	12 1/2"	3/4"	1/2"	7 3/4"	5 1/8"	1/2"
x73	12 1/2"	5/8"	9/16"	7 3/4"	5 1/8"	1/2"
HP 12x84	10"	7/8"	1/2"	6 1/2"	5 1/8"	1/2"
x74	10"	7/8"	1/2"	6 1/2"	5 1/8"	1/2"
x63	10"	5/8"	1/2"	6 1/2"	1 1/2"	3/8"
x53	10"	5/8"	1/2"	6 1/2"	1 1/2"	3/8"
HP 10x57	8"	3/4"	9/16"	5 1/4"	1 1/2"	3/8"
x42	8"	5/8"	9/16"	5 1/4"	1 1/2"	3/8"
HP 8x36	7"	5/8"	7/16"	4 1/4"	1 1/2"	3/8"

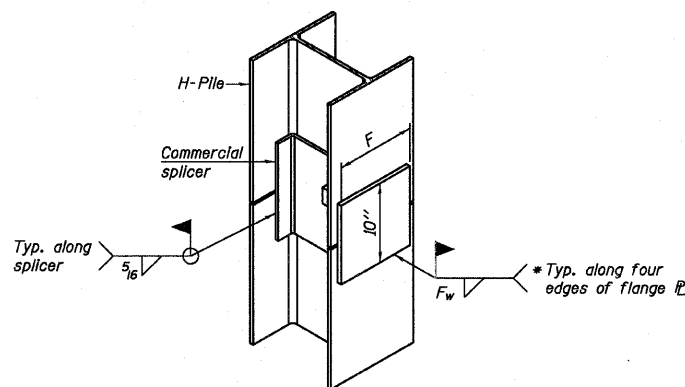


ELEVATION



DETAIL A

H-PILE SHOE ATTACHMENT



ISOMETRIC VIEW

WELDED COMMERCIAL SPLICE ALTERNATE

- * Interrupt welds 1/4" from end of web and/or each flange.
- ** Remove portions of backup plates that extend outside the flanges.
- *** Weld size per pile shoe manufacturer (5/16" min.).

Note:
The steel H-piles shall be according to AASHTO M270 Grade 50.

F-HP

7-1-10

Farnsworth GROUP, INC.
2709 McEraw Drive
Bloomington, Illinois 61704
309/663-8436, 309/663-1571 fax

DESIGNED - CEE
CHECKED - JML
DRAWN - DJM
DATE - 02/06/12

REVIS
REVIS
REVIS
REVIS

STATE OF ILLINOIS
DEPARTMENT OF TRANSPORTATION

HP PILE DETAILS

SHEET NO. 87 OF 9 SHEETS

T.R.	SECTION	COUNTY	TOTAL SHEETS	SHEET NO.
169	09-20110-02-BR	LIVINGSTON	17	12
				CONTRACT NO. 87496
ILLINOIS FED. AID PROJECT				

Midwest Testing Services, Inc.
3705 Progress Blvd.
Peru, IL 61354

BORING LOG
Sheet 1 of 2

Phone: 815-223-6696
Fax: 815-223-6659
e-mail: mts37@comcast.net

Client: Farnsworth Group, Inc.
Project Name: Section 09-20110-02-BR Pike Road District
Project Site: Livingston County, Illinois

Boring No. B-1
Surface Elev. 668.20
Auger Depth 30' Rotary Depth NA
Start Date 06/03/11 Finish Date 06/03/11

Location: 5' south of centerline of existing roadway
and 40' west of center of existing bridge

(DEPTH) ELEV.	DESCRIPTION OF MATERIALS	Graphic Log	Depth in feet	SAMPLES					DRILLED BY	REMARKS	
				Sample No.	Sample Type	Qu (TSF)	N Value (Blows)	Bulge / Shear			Moisture (%)
668.20											
667.20	Stiff Brown To Black Clay		1						Randy Safranski Diedrich D-120		
666.20			2								
665.20			3	1	SS	1.7	8	B			22
664.20		4									
663.20		5									
662.20		6	2	SS	1.6	8	B	20			
661.20	Stiff Brown Clay		7								
660.20			8	3	SS	1.5	9	B			18
659.20		9									
658.20	Very Stiff Brownish Gray Clay Till		10								
657.20			11	4	SS	2.6	15	B	17		
656.20			12								
655.20		13	5	SS	3.6	21	B	16			
654.20		14									
653.20	Hard Brownish Gray Clay Till		15								
652.20			16	6	SS	4.4	24	B	14		
651.20		17									
650.20	Limestone Caprock		18	7	SS	---	100	1"	---		
649.20			19								
648.20	Very Dense Gray Shale		20	8	SS	---	100	4"	---		

Groundwater Data: Static water level after auger removal - elevation 656.2
Comments:

Midwest Testing Services, Inc.
3705 Progress Blvd.
Peru, IL 61354

BORING LOG
Sheet 2 of 2

Phone: 815-223-6696
Fax: 815-223-6659
e-mail: mts37@comcast.net

Client: Farnsworth Group, Inc.
Project Name: Section 09-20110-02-BR Pike Road District
Project Site: Livingston County, Illinois

Boring No. B-1
Surface Elev. 668.20
Auger Depth 30' Rotary Depth NA
Start Date 06/03/11 Finish Date 06/03/11

Location: 5' south of centerline of existing roadway
and 40' west of center of existing bridge

(DEPTH) ELEV.	DESCRIPTION OF MATERIALS	Graphic Log	Depth in feet	SAMPLES					DRILLED BY	REMARKS
				Sample No.	Sample Type	Qu (TSF)	N Value (Blows)	Bulge / Shear		
647.20										
646.20	Very Dense Gray Shale With Limestone Stringers (Drilled With Rock Bit)		22						Randy Safranski Diedrich D-120	
645.20			23							
644.20			24							
643.20			25							
642.20			26							
641.20			27							
640.20			28							
639.20			29							
638.20			30							
637.20			31							
636.20			32							
635.20			33							
634.20			34							
633.20			35							
632.20			36							
631.20			37							
630.20			38							
629.20			39							
628.20		40								
627.20		41								

Groundwater Data: Static water level after auger removal - elevation 656.2
Comments:

Midwest Testing Services, Inc.
3705 Progress Blvd.
Peru, IL 61354

BORING LOG
Sheet 1 of 2

Phone: 815-223-6696
Fax: 815-223-6659
e-mail: mts37@comcast.net

Client: Farnsworth Group, Inc.
Project Name: Section 09-20110-02-BR Pike Road District
Project Site: Livingston County, Illinois

Boring No. B-2
Surface Elev. 668.01
Auger Depth 30' Rotary Depth NA
Start Date 06/03/11 Finish Date 06/03/11

Location: 6' north of centerline of existing roadway
and 40' east of center of existing bridge

(DEPTH) *ELEV.	DESCRIPTION OF MATERIALS	Sample Log	Depth in feet	SAMPLES					DRILLED BY	REMARKS
				Sample No.	Sample Type	Qu (TSF)	N Value (Blows)	Bulge / Shear		
668.01									Randy Safranski Diedrich D-120	
667.01	Stiff Black And Brown Clay		1							
666.01			2							
665.01			3	1	SS	1.1	6	B	23	
664.01			4							
663.01	Stiff Black Clay		5							
662.01			6	2	SS	1.7	10	B	22	
661.01	Very Stiff Brown Clay		7							
660.01			8	3	SS	2.0	11	B	19	
659.01	Very Stiff Brownish Gray Clay Till		9							
658.01			10	4	SS	2.9	20	B	16	
657.01			11							
656.01	Hard Gray Clay Till		12							
655.01			13	5	SS	3.3	22	B	16	
654.01	Very Dense Gray Shale		14							
653.01			15	6	SS	4.7	25	B	13	
652.01			16							
651.01			17							
650.01			18	7	SS	—	100 3"	—	16	
649.01			19							
648.01			20	8	SS	—	100 2"	—	—	

Groundwater Data: Static water level after auger removal - elevation 656.01.
Comments:

Midwest Testing Services, Inc.
3705 Progress Blvd.
Peru, IL 61354

BORING LOG
Sheet 2 of 2

Phone: 815-223-6696
Fax: 815-223-6659
e-mail: mts37@comcast.net

Client: Farnsworth Group, Inc.
Project Name: Section 09-20110-02-BR Pike Road District
Project Site: Livingston County, Illinois

Boring No. B-2
Surface Elev. 668.01
Auger Depth 30' Rotary Depth NA
Start Date 06/03/11 Finish Date 06/03/11

Location: 6' north of centerline of existing roadway
and 40' east of center of existing bridge

(DEPTH) *ELEV.	DESCRIPTION OF MATERIALS	Sample Log	Depth in feet	SAMPLES					DRILLED BY	REMARKS
				Sample No.	Sample Type	Qu (TSF)	N Value (Blows)	Bulge / Shear		
647.01									Randy Safranski Diedrich D-120	
646.01	Very Dense Gray Shale With Limestone Stringers (Drilled With Rock Bit)		22							
645.01			23							
644.01			24							
643.01			25							
642.01			26							
641.01			27							
640.01			28							
639.01			29							
638.01			30							
637.01			31							
636.01			32							
635.01			33							
634.01			34							
633.01			35							
632.01			36							
631.01			37							
630.01			38							
629.01		39								
628.01		40								
627.01		41								

Groundwater Data: Static water level after auger removal - elevation 656.01.
Comments:



DESIGNED - CEE	REVISION
CHECKED - JML	REVISION
DRAWN - DJM	REVISION
DATE - 02/06/12	CHECKED - MSW
	REVISION

STATE OF ILLINOIS
DEPARTMENT OF TRANSPORTATION

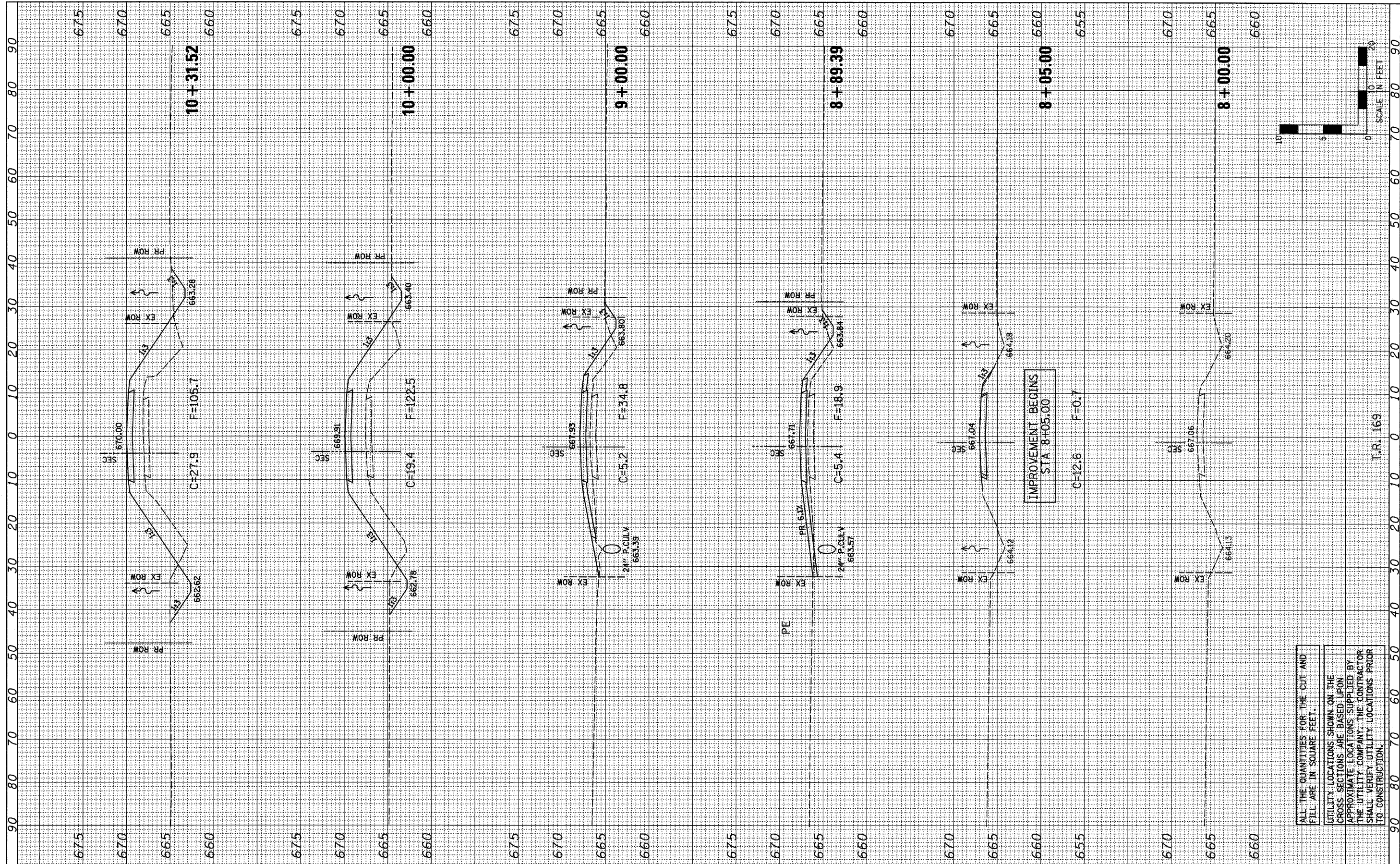
SOIL BORING LOGS

SHEET NO. B9 OF 9 SHEETS

T.R.	SECTION	COUNTY	TOTAL SHEETS	SHEET NO.
169	09-20110-02-BR	LIVINGSTON	17	14
CONTRACT NO. 87496			ILLINOIS FED. AID PROJECT	

FINAL SURVEY NO.	DATE
REVISIONS	BY
NO.	

ORIGINAL SURVEY NO.	DATE
REVISIONS	BY
NO.	



ALL THE QUANTITIES FOR THE CUT AND FILL ARE IN SQUARE FEET.

UTILITY LOCATIONS SHOWN ON THE CROSS SECTIONS ARE BASED UPON APPROXIMATE LOCATIONS SUPPLIED BY THE UTILITY COMPANY. THE CONTRACTOR SHALL VERIFY UTILITY LOCATIONS PRIOR TO CONSTRUCTION.

Farnsworth GROUP, INC.
 2709 McGraw Drive
 Bloomington, Illinois 61704
 309/863-8433, 309/863-1711 fax

USER NAME = #USER#
PLOT SCALE = #SCALE#
PLOT DATE = #DATE#

DESIGNED - JML
DRAWN - JJO
CHECKED - MSW
DATE - 02/06/12

REVISED -
REVISED -
REVISED -
REVISED -

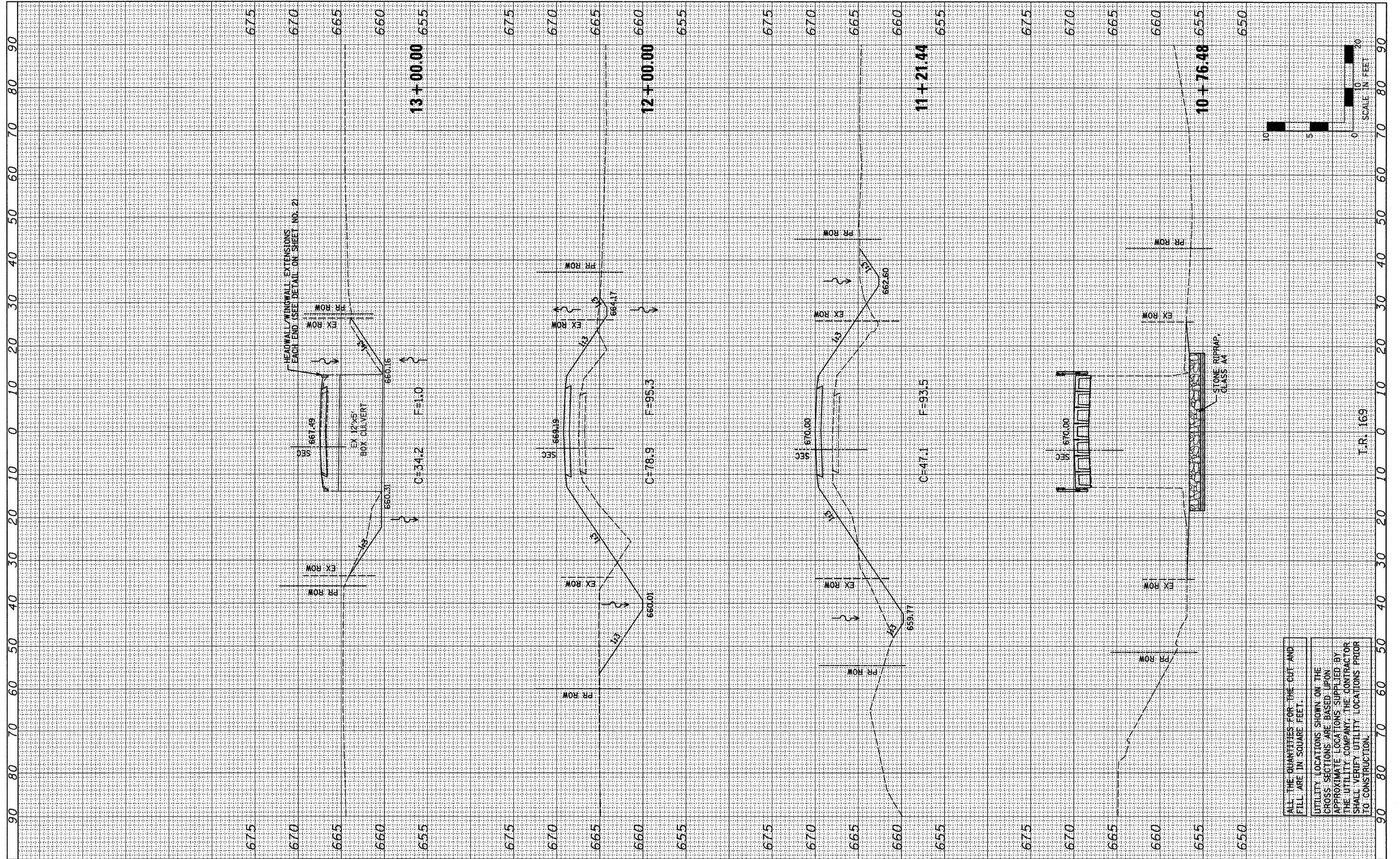
**STATE OF ILLINOIS
 DEPARTMENT OF TRANSPORTATION**

SCALE: 1"=10'	SHEET NO. OF SHEETS	STA. 8+00.00 TO STA. 10+31.52
---------------	---------------------	-------------------------------

T.R. 169	SECTION 09-20110-02-BR	COUNTY LIVINGSTON	TOTAL SHEETS 17	SHEET NO. 15
CONTRACT NO. 87496				
FED. ROAD DIST. NO. ILLINOIS FED. AID PROJECT				

FINAL SURVEY	SURVEYED	BY	DATE
NOTE BOOK	TEMPLATE		
AREAS	CHECKED		
NO.			

ORIGINAL SURVEY	SURVEYED	BY	DATE
NOTE BOOK	TEMPLATE		
AREAS	CHECKED		
NO.			



ALL THE QUANTITIES FOR THE CUT AND FILL ARE IN SQUARE FEET.

UTILITY LOCATIONS SHOWN ON THE CROSS-SECTIONS ARE BASED UPON APPROXIMATE LOCATIONS SUPPLIED BY THE UTILITY COMPANY. THE CONTRACTOR SHALL VERIFY UTILITY LOCATIONS PRIOR TO CONSTRUCTION.

Farnsworth GROUP, INC.
 2709 McGraw Drive
 Bloomington, Illinois 61704
 309/663-9434, 309/663-1571 fax

USER NAME = #USER#	DESIGNED - JML	REVISED -
PLOT SCALE = #SCALE#	DRAWN - JJO	REVISED -
PLOT DATE = #DATE#	CHECKED - MSW	REVISED -
	DATE - 02/06/12	REVISED -

**STATE OF ILLINOIS
 DEPARTMENT OF TRANSPORTATION**

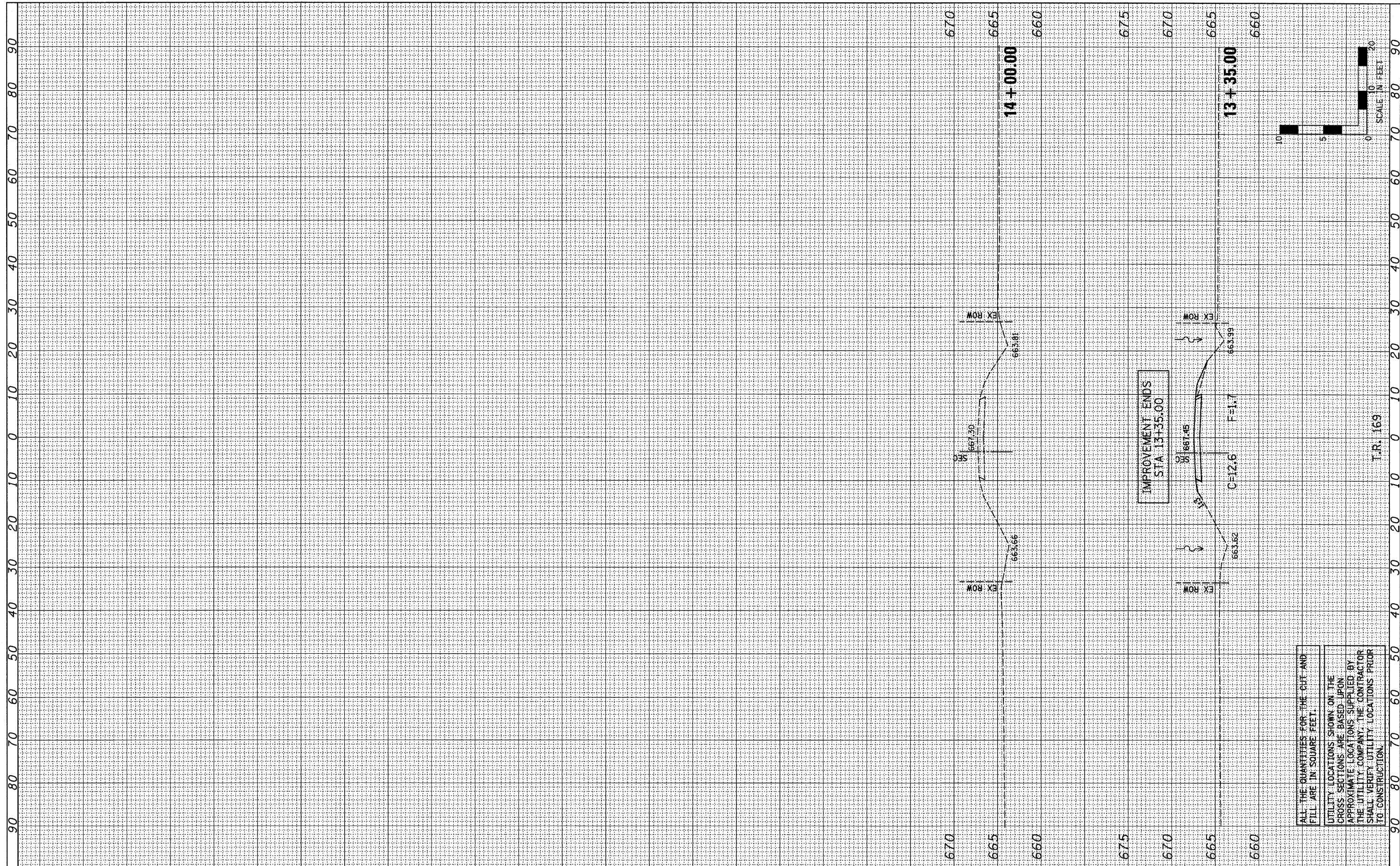
CROSS SECTIONS

SCALE: 1"=10' SHEET NO. OF SHEETS STA. 10+76.48 TO STA. 13+00.00

T.R.	SECTION	COUNTY	TOTAL SHEETS	SHEET NO.
169	09-20110-02-BR	LIVINGSTON	17	16
CONTRACT NO. 87496				
FED. ROAD DIST. NO. [ILLINOIS] FED. AID PROJECT				

FINAL SURVEY NO.	SURVEY DATE	BY
NOTE BOOK NO.	TEMPLATE	
AREAS CHECKED		

ORIGINAL SURVEY NO.	SURVEY DATE	BY
NOTE BOOK NO.	TEMPLATE	
AREAS CHECKED		



ALL THE QUANTITIES FOR THE CUT AND FILL ARE IN SQUARE FEET.

UTILITY LOCATIONS SHOWN ON THE CROSS SECTIONS ARE BASED UPON APPROXIMATE LOCATIONS SUPPLIED BY THE UTILITY COMPANY. THE CONTRACTOR SHALL VERIFY UTILITY LOCATIONS PRIOR TO CONSTRUCTION.

Farnsworth GROUP, INC.
 2709 McGraw Drive
 Bloomington, Illinois 61704
 309/963-8435, 309/963-1571 fax

USER NAME = #USER#	DESIGNED - JML	REVISED -
PLOT SCALE = #SCALE#	DRAWN - JJO	REVISED -
PLOT DATE = #DATE#	CHECKED - MSW	REVISED -
	DATE - 02/06/12	REVISED -

**STATE OF ILLINOIS
 DEPARTMENT OF TRANSPORTATION**

SCALE: 1"=10'	SHEET NO. OF SHEETS	STA. 13+35.00 TO STA. 14+00.00
---------------	---------------------	--------------------------------

T.R.	SECTION	COUNTY	TOTAL SHEETS	SHEET NO.
169	09-20110-02-BR	LIVINGSTON	17	17
CONTRACT NO. 87496				
FED. ROAD DIST. NO. [ILLINOIS] FED. AID PROJECT				