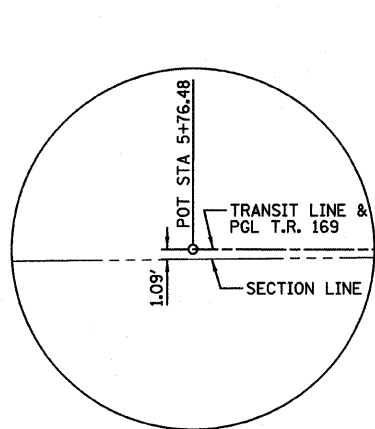
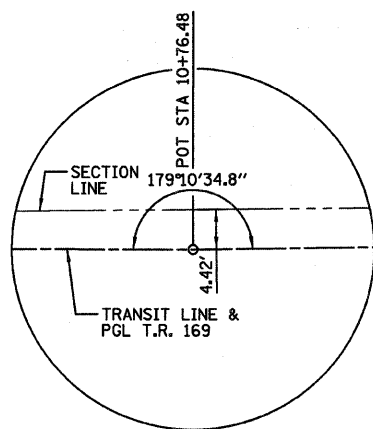


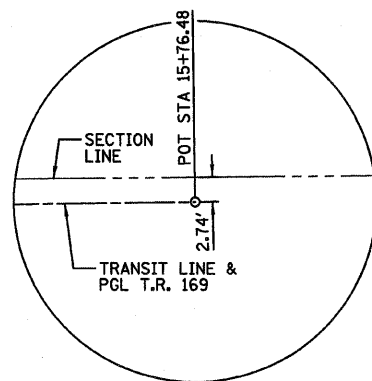
STATION	NORTHING	EASTING
5+76.48	1510914.692	878067.902
6+75.05	1510914.584	878166.475
10+76.48	1510914.143	878567.902
15+76.48	1510920.781	879067.858



ENLARGED VIEW A



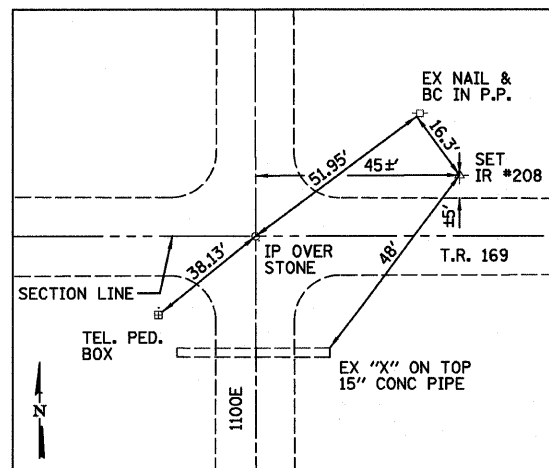
ENLARGED VIEW B



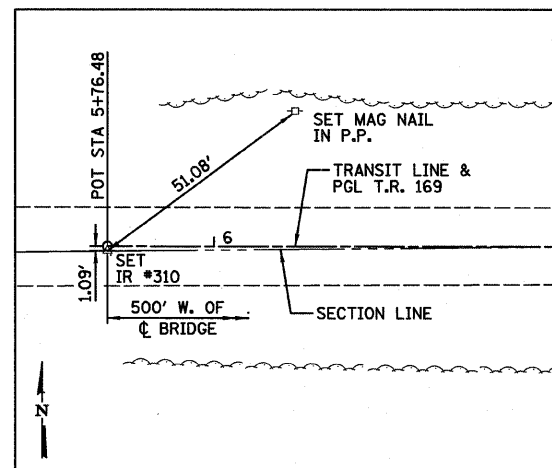
ENLARGED VIEW C

BENCHMARK:
 *1001, CENTER HEADWALL BOX CULVERT
 200'± EAST OF BRIDGE
 STA 12+99.23/13.07' RT
 ELEVATION = 666.650

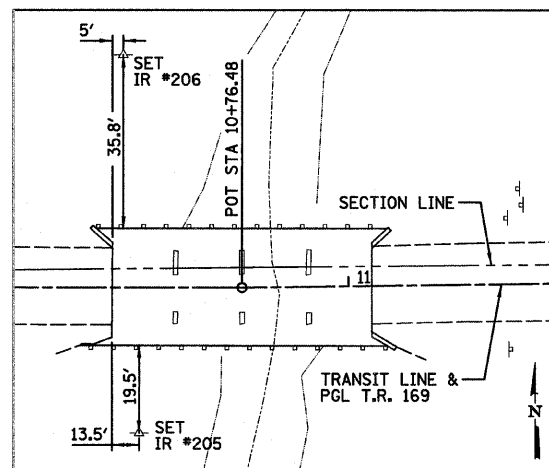
BENCHMARK:
 *1003, S. FACE POWER POLE 150'± W. OF BRIDGE
 @ NE CORNER OF T.R. 169 & PRIVATE ENTRANCE N.
 STA 9+02.02/33.40' LT.
 ELEVATION = 666.196



SET IR #208
 N=1510925.469
 E=877538.335
 ELEV=670.930

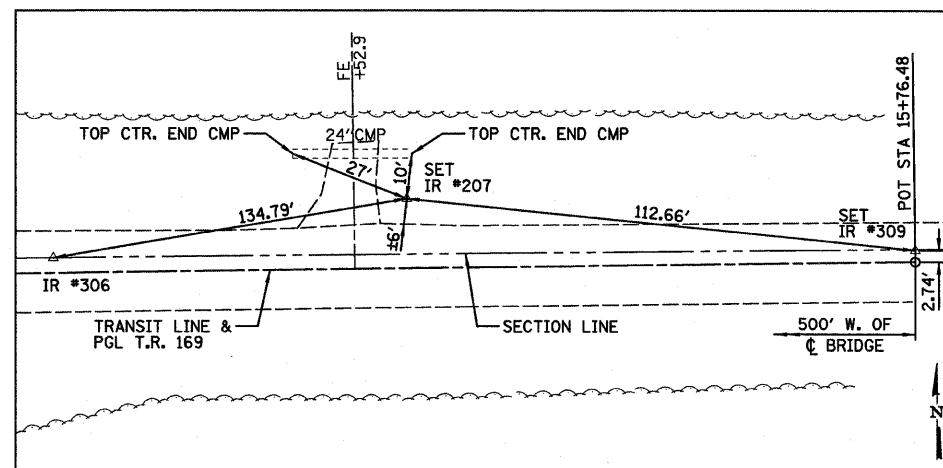


SET IR #310
 N=1510913.607
 E=878067.904



SET IR #206
 STA 10+50.27/51.61' LT
 N=1510965.782
 E=878541.748
 ELEV=664.740

SET IR #205
 STA 10+53.80/32.60' RT
 N=1510881.565
 E=878545.185
 ELEV=664.930



SET IR #207
 STA 14+64.53/15.45' LT
 N=1510934.742
 E=878955.713
 ELEV=666.180

SET IR #309
 N=1510923.520
 E=879067.811



USER NAME = #USER#	DESIGNED - JML	REVISED -
PLOT SCALE = #SCALE#	DRAWN - JJO	REVISED -
PLOT DATE = #DATE#	CHECKED - MSW	REVISED -
	DATE - 02/06/12	REVISED -

STATE OF ILLINOIS
 DEPARTMENT OF TRANSPORTATION

ALIGNMENT, SURVEY TIES AND BENCHMARKS

SCALE: SHEET NO. OF SHEETS STA. TO STA.

T.R.	SECTION	COUNTY	TOTAL SHEETS	SHEET NO.
169	09-20110-02-BR	LIVINGSTON	17	4
CONTRACT NO. 87496				
FED. ROAD DIST. NO. ILLINOIS FED. AID PROJECT				