

T.R.	SECTION	COUNTY	TOTAL SHEETS	SHEET NO.
169	09-20110-02-BR	LIVINGSTON	17	1
FED. ROAD DIST. NO.		ILLINOIS	CONTRACT NO. 87496	

STATE OF ILLINOIS
DEPARTMENT OF TRANSPORTATION
DIVISION OF HIGHWAYS
**PLANS FOR PROPOSED
HIGHWAY BRIDGE
PROGRAM**

LIVINGSTON COUNTY
SECTION 09-20110-02-BR
ROUTE: T.R. 169 (1300N)
FEDERAL PROJECT BROS-0105(050)

INDEX OF SHEETS

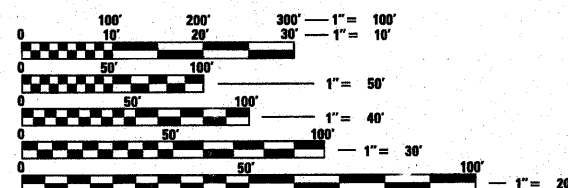
- 1 COVER SHEET
- 2 GENERAL NOTES, COMMITMENTS AND MISCELLANEOUS DETAILS
- 3 SUMMARY OF QUANTITIES AND SCHEDULE OF QUANTITIES
- 4 ALIGNMENT, SURVEY TIES AND BENCHMARKS
- 5 PLAN AND PROFILE SHEET
- 6-14 STRUCTURE PLANS S.N. 053-4201
- 15-17 CROSS SECTIONS

HIGHWAY STANDARD DETAILS

- 000001-06 STANDARD SYMBOLS, ABBREVIATIONS AND PATTERNS
- 001001-02 AREAS OF REINFORCEMENT BARS
- 001006 DECIMAL OF AN INCH AND CF A FOOT
- 280001-06 TEMPORARY EROSION CONTROL SYSTEMS
- 515001-03 NAME PLATE FOR BRIDGES
- 601101-01 CONCRETE HEADWALL FOR PIPE DRAIN
- 635006-03 REFLECTOR AND TERMINAL MARKER PLACEMENT
- 635011-02 REFLECTOR MARKER AND MOUNTING DETAILS
- 701901-02 TRAFFIC CONTROL DEVICES
- B.L.R. 21-9 TYPICAL APPLICATION OF TRAFFIC CONTROL DEVICES FOR CONSTRUCTION ON RURAL LOCAL HIGHWAYS
- B.L.R. 24-2 MAILBOX TURNOUT FOR LOCAL ROADS

UTILITIES:

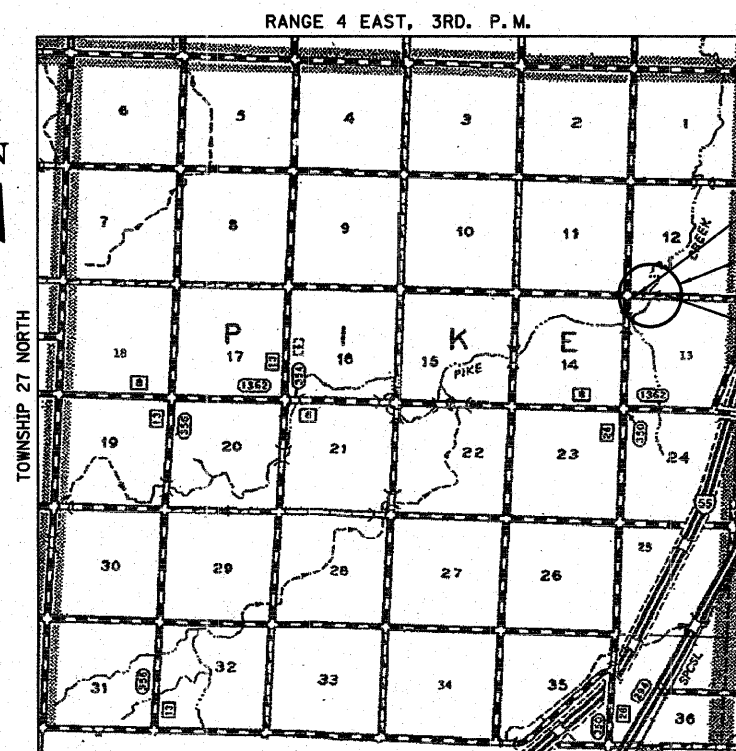
- POWER - AMEREN (ILLINOIS POWER)
- TELEPHONE - FRONTIER



FULL SIZE PLANS HAVE BEEN PREPARED USING STANDARD ENGINEERING SCALES. REDUCED SIZED PLANS WILL NOT CONFORM TO STANDARD SCALES. IN MAKING MEASUREMENTS ON REDUCED PLANS, THE ABOVE SCALES MAY BE USED.

J.U.L.I.E.
JOINT UTILITY LOCATION INFORMATION FOR EXCAVATION
1-800-892-0123
OR 811

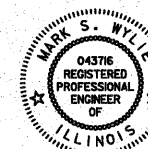
JOB NUMBER C-93-135-11
CONTRACT NUMBER 87496
CONSTRUCTION TYPE CODE: ROADWAY: 0004
BRIDGE: 0011



LOCATION MAP

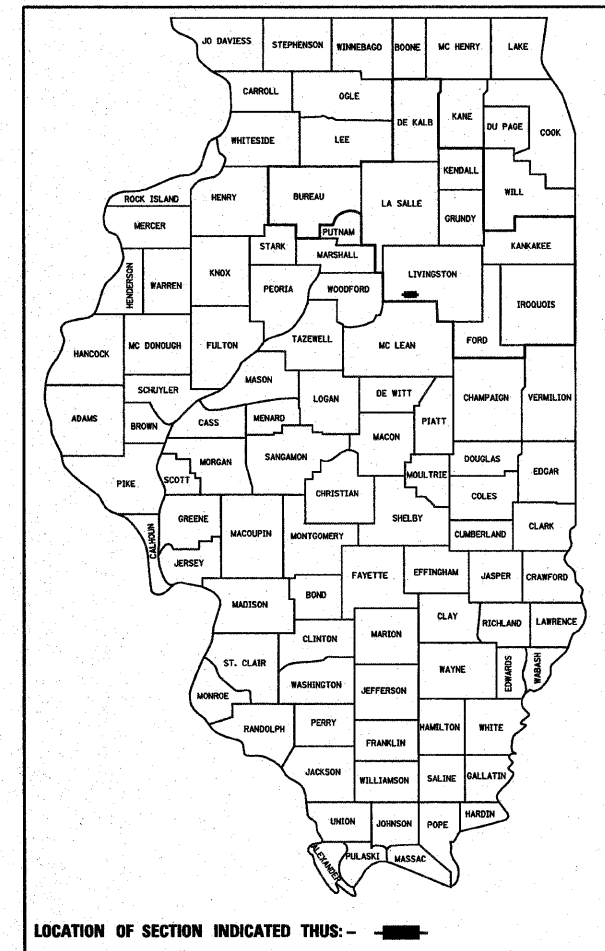
GROSS LENGTH OF PROJECT = 530.00 FT = 0.100 MILE
NET LENGTH OF PROJECT = 530.00 FT = 0.100 MILE

FUNCTIONAL CLASSIFICATION: LOCAL ROAD (NON-URBAN)
DESIGN SPEED: 30 MPH
DESIGN TRAFFIC: 0-250
% TRUCKS: 0.0
% PASSENGER VEHICLES: 100.0



Mark S. Wylie Date 2/6/12
MARK S. WYLIE
ILLINOIS PROFESSIONAL ENGINEER
NO. 062-043716
EXPIRATION 11/30/13

C-93-135-11



STATE OF ILLINOIS
DEPARTMENT OF TRANSPORTATION
DIVISION OF HIGHWAYS

SUBMITTED 02/14/2012
[Signature] TOWNSHIP COMMISSIONER OF HIGHWAYS

SUBMITTED 02/14/2012
[Signature] COUNTY HIGHWAY ENGINEER

PASSED 02-16-2012
[Signature] DISTRICT 3 IMPLEMENTATION ENGINEER

RELEASING FOR BID BASED ON LIMITED REVIEW 02-16-2012
[Signature] DEPUTY DIRECTOR OF HIGHWAYS, REGION 2 ENGINEER

