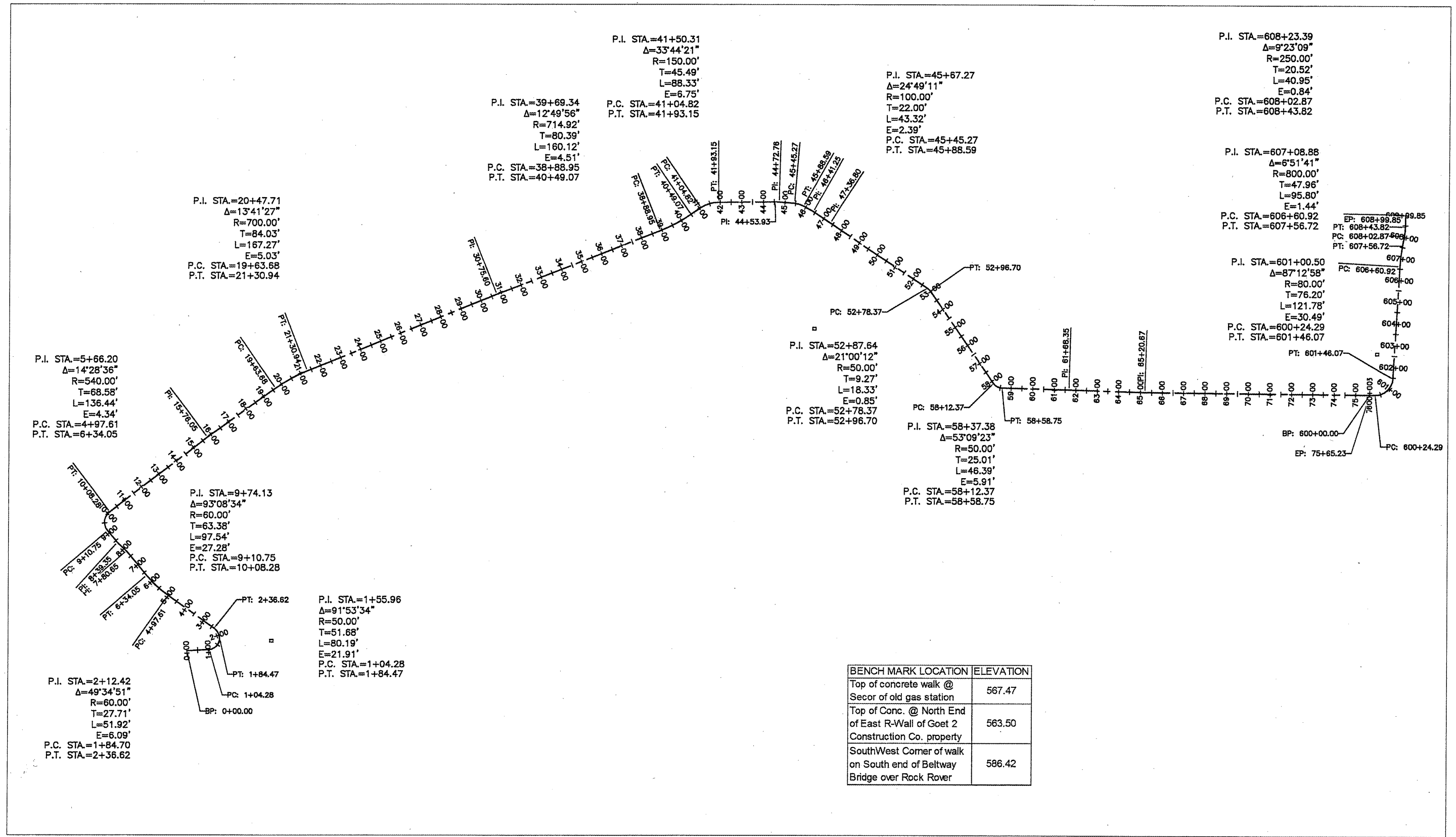


# HORIZONTAL AND VERTICAL CONTROL

DATE	
BY	
FINAL SURVEY	
SURVEY PLOTTED	
NOTE BOOK	
AREAS CHECKED	
NO.	

DATE	
BY	
ORIGINAL SURVEY	
SURVEY PLOTTED	
NOTE BOOK	
AREAS CHECKED	
NO.	



BENCH MARK LOCATION	ELEVATION
Top of concrete walk @ Secor of old gas station	567.47
Top of Conc. @ North End of East R-Wall of Goet 2 Construction Co. property	563.50
SouthWest Corner of walk on South end of Beltway Bridge over Rock Rover	586.42