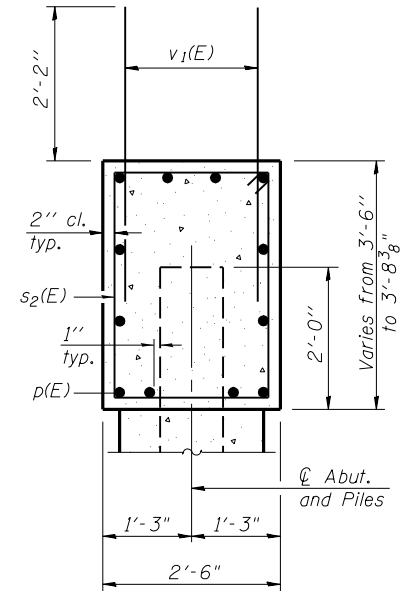
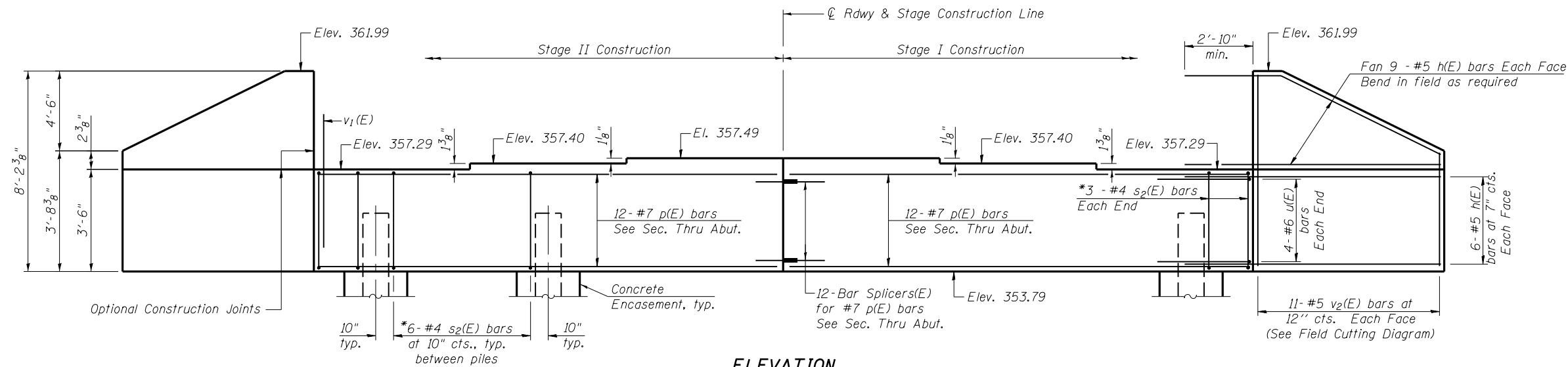
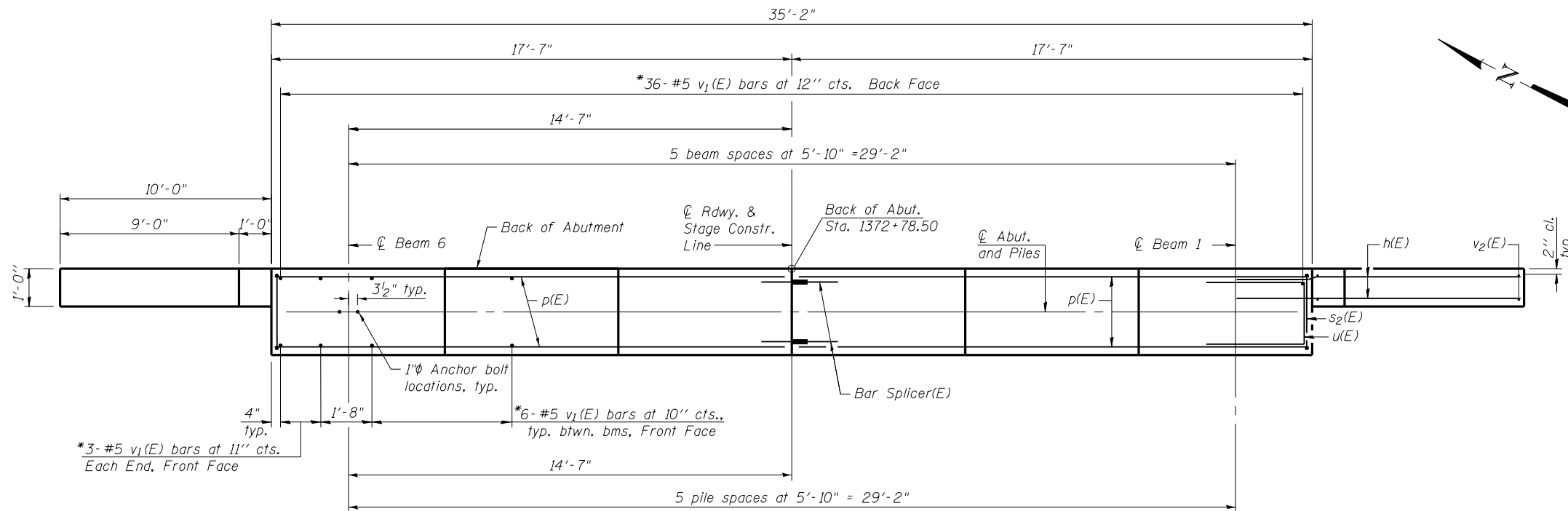


Notes:
Pour steps monolithically with cap.

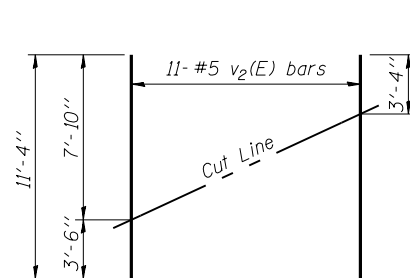


*18-#4 s₂(E) bars Each Stage
18-#5 v₁(E) bars Each Face, Each Stage



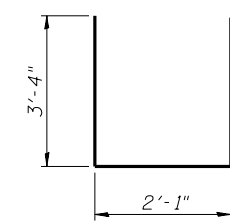
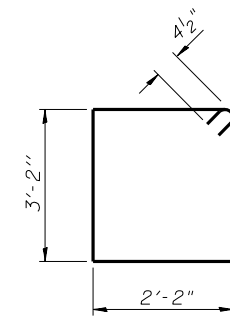
PILE DATA

Type: HP12x63
Nominal Required Bearing: 497 kips
Factored Resistance Available: 273 kips
Est. Length: 31 Ft.
No. Production Piles: 6
No. Test Piles: 0



FIELD CUTTING DIAGRAM

Order v₂(E) full length. Cut as shown and use remainder of bars in opposite face.



BILL OF MATERIAL

Bar	No.	Size	Length	Shape
h(E)	60	#5	12'-8"	—
p(E)	24	#7	17'-3"	—
s ₂ (E)	36	#4	11'-5"	□
u(E)	8	#6	8'-9"	—
v ₁ (E)	72	#5	4'-4"	—
v ₂ (E)	22	#5	11'-4"	—
Structure Excavation		Cu. Yd.	96.2	
Concrete Structures		Cu. Yd.	16.3	
Reinforcement Bars, Epoxy Coated		Pound	2600	
Furnishing Steel Piles HP12x63		Foot	186	
Driving Piles		Foot	186	
Pile Shoes		Each	6	
Concrete Encasement		Cu. Yd.	2.1	
Bar Slicers		Each	12	

For details of Bar Splicers, see sheet 19 of 20.
For details of piles and Concrete Encasement, see sheet 18 of 20.

CB Coombe-Bloxdorf P.C.
- CIVIL ENGINEERS -
- STRUCTURAL ENGINEERS -
- LAND SURVEYORS -
Design Firm License No. 184-002703

FILE NAME =	USER NAME = \$USER\$	DESIGNED - CME	REVISED -
et:\pw\work\p\midot\lavenderba\d0293530\0760030-78165-016-n-abut-det.dgn		CHECKED - MCB	REVISED -
	PLOT SCALE = 0:2.000002 '1' / in.	DRAWN - CFC/MML	REVISED -
CB PROJECT NO 08056-14	PLOT DATE = 1/23/2012	CHECKED - CME	REVISED -

STATE OF ILLINOIS
DEPARTMENT OF TRANSPORTATION

NORTH ABUTMENT
STRUCTURE NO. 076-0030

SHEET NO. 16 OF 20 SHEETS

F.A.P. R.T.E.	SECTION	COUNTY	TOTAL SHEETS	SHEET NO.
885	6B-3	POPE	41	37
CONTRACT NO. 78165				

ILLINOIS FED. AID PROJECT