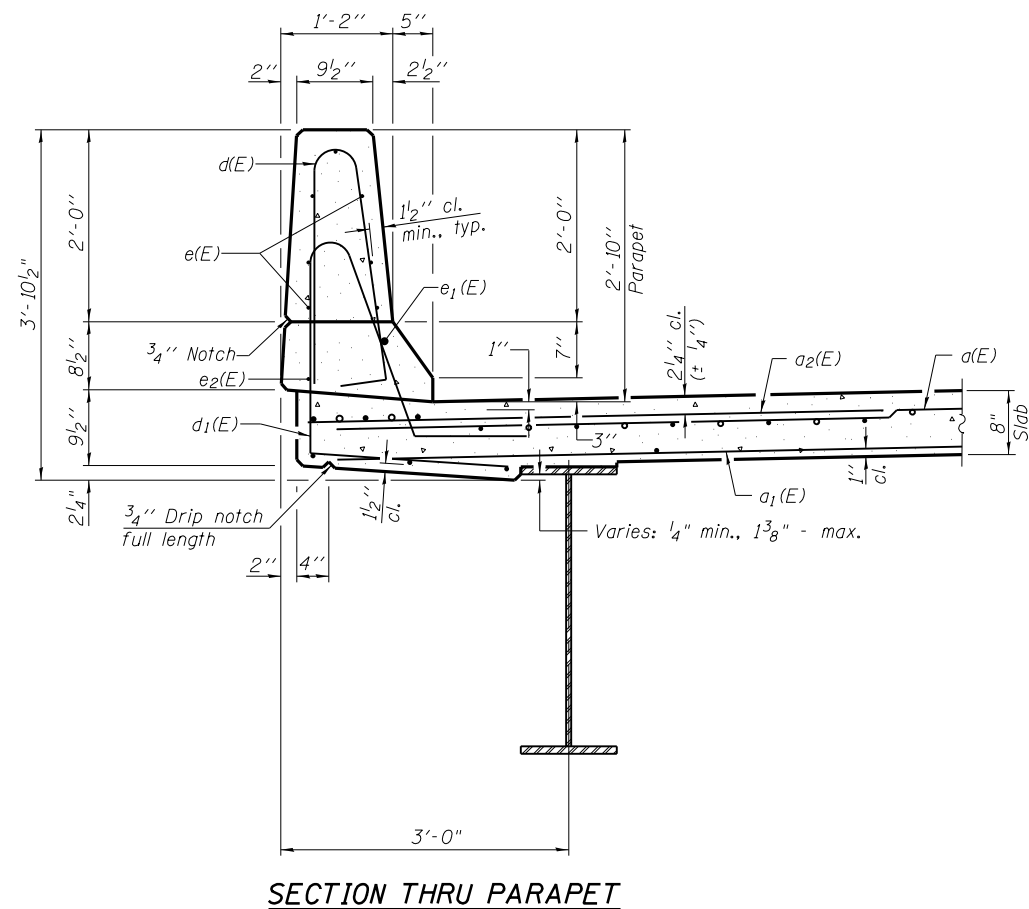
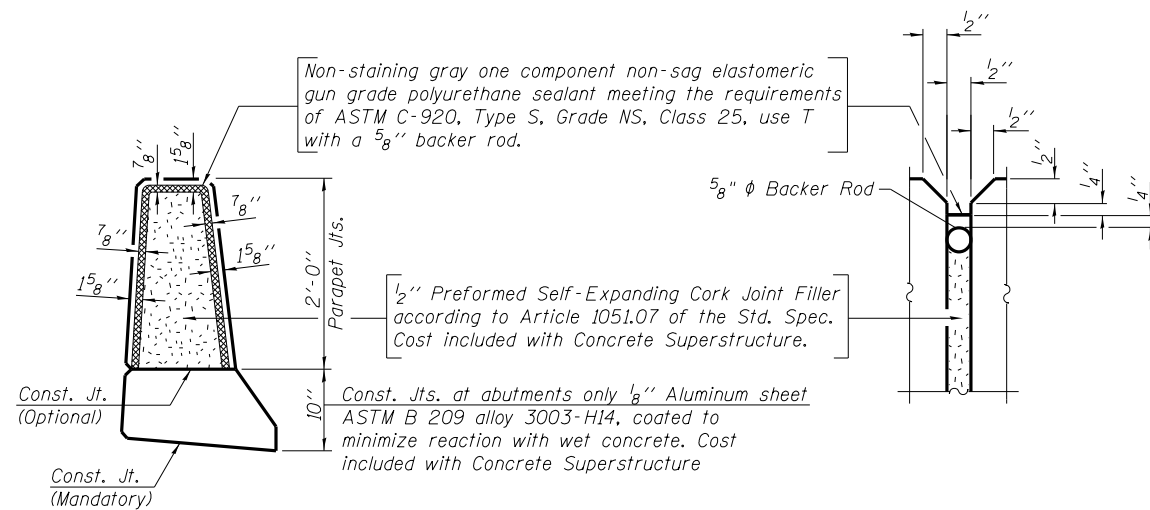


MINIMUM BAR LAP
 (Parapet)
 #4 bar = 2'-0"
 #8 bar = 5'-2"

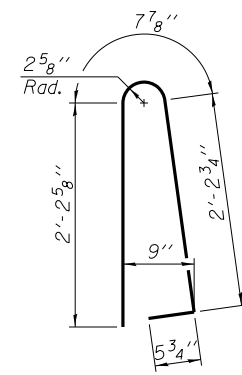
INSIDE ELEVATION OF PARAPET



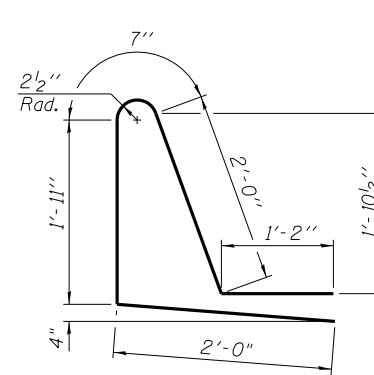
SECTION THRU PARAPET



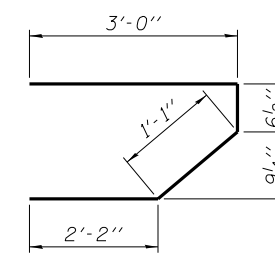
PARAPET JOINT DETAILS



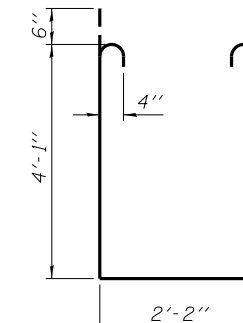
BAR d(E)



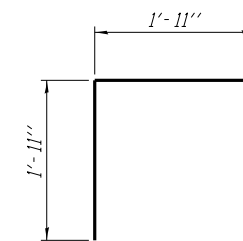
BAR d₁(E)



BAR s(E)



BAR s₁(E)



BAR v(E)

SUPERSTRUCTURE BILL OF MATERIAL

Bar	No.	Size	Length	Shape
a(E)	326	#5	16'-11"	—
a ₁ (E)	230	#5	16'-7"	—
a ₂ (E)	324	#6	6'-6"	—
b(E)	114	#5	33'-4"	—
b ₁ (E)	144	#5	25'-8"	—
d(E)	208	#5	5'-7"	U
d ₁ (E)	208	#5	7'-8"	U
e(E)	84	#4	15'-6"	—
e ₁ (E)	6	#8	35'-0"	—
e ₂ (E)	8	#4	25'-2"	—
m(E)	20	#6	17'-3"	—
m ₁ (E)	24	#6	8'-0"	—
m ₂ (E)	8	#6	5'-6"	—
m ₃ (E)	8	#6	2'-7"	—
s(E)	92	#5	6'-10"	⌋
s ₁ (E)	82	#4	11'-4"	⌋
v(E)	#5	3'-10"	⌋	
Reinforcement Bars, Epoxy Coated		Pound	27620	
Concrete Superstructure		Cu. Yds.	137.5	
Bar Splicers		Each	364	

Bars indicated thus 1 x 4-#4 etc. indicates 1 line of bars with 4 lengths per line.

FILE NAME =	USER NAME = \$USER\$	DESIGNED - CME	REVISED -
ei:\pw\work\p1dot\lavenderba\d0293530\0760030-78165-010-superstr.det.dgn		CHECKED - MCB	REVISED -
	PLOT SCALE = 0:2.000002 '1' / in.	DRAWN - CFC/MML	REVISED -
CB PROJECT NO 08056-14	PLOT DATE = 1/23/2012	CHECKED - CME	REVISED -

STATE OF ILLINOIS
 DEPARTMENT OF TRANSPORTATION

SUPERSTRUCTURE DETAILS
 STRUCTURE NO. 076-0030

SHEET NO. 10 OF 20 SHEETS

CB Coombe-Bloxdorf P.C.
 - CIVIL ENGINEERS -
 - STRUCTURAL ENGINEERS -
 - LAND SURVEYORS -
 Design Firm License No. 184-002703

F.A.P. RTE.	SECTION	COUNTY	TOTAL SHEETS	SHEET NO.
885	6B-3	POPE	41	31

CONTRACT NO. 78165
 ILLINOIS FED. AID PROJECT