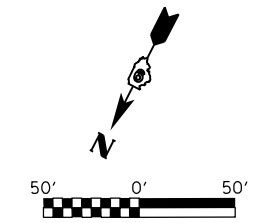
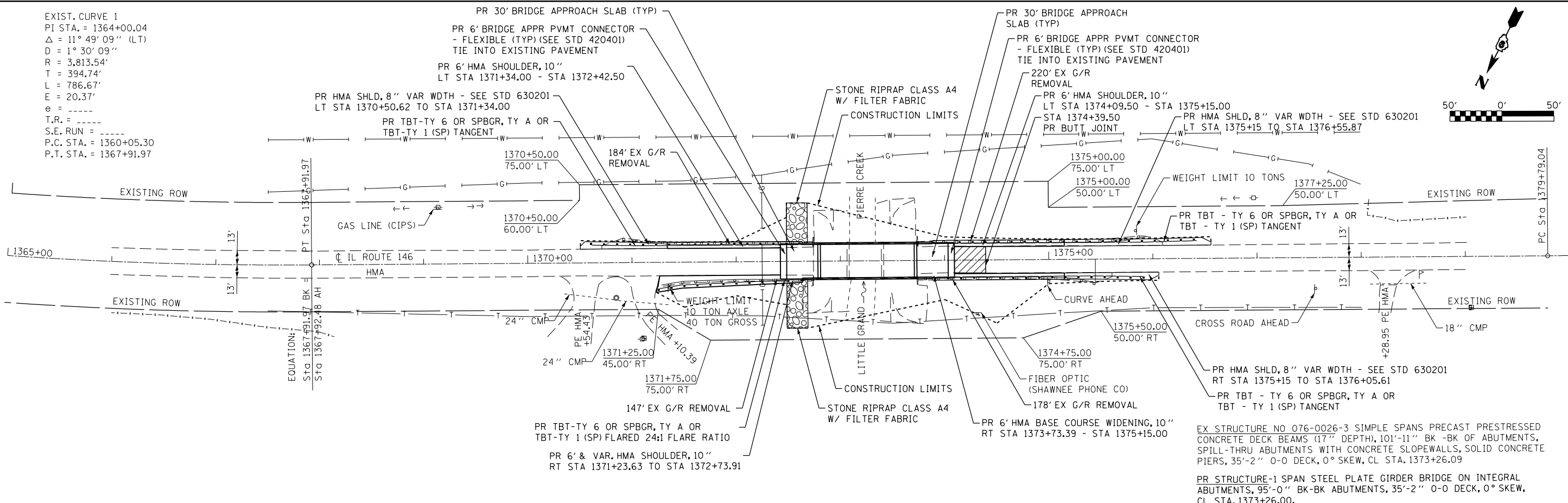


EXIST. CURVE 1  
 PI STA. = 1364+00.04  
 $\Delta = 11^\circ 49' 09''$  (LT)  
 $D = 1^\circ 30' 09''$   
 $R = 3,813.54'$   
 $T = 394.74'$   
 $L = 786.67'$   
 $E = 20.37'$   
 $e = \text{-----}$   
 $S.E. RUN = \text{-----}$   
 $P.C. STA. = 1360+05.30$   
 $P.T. STA. = 1367+91.97$

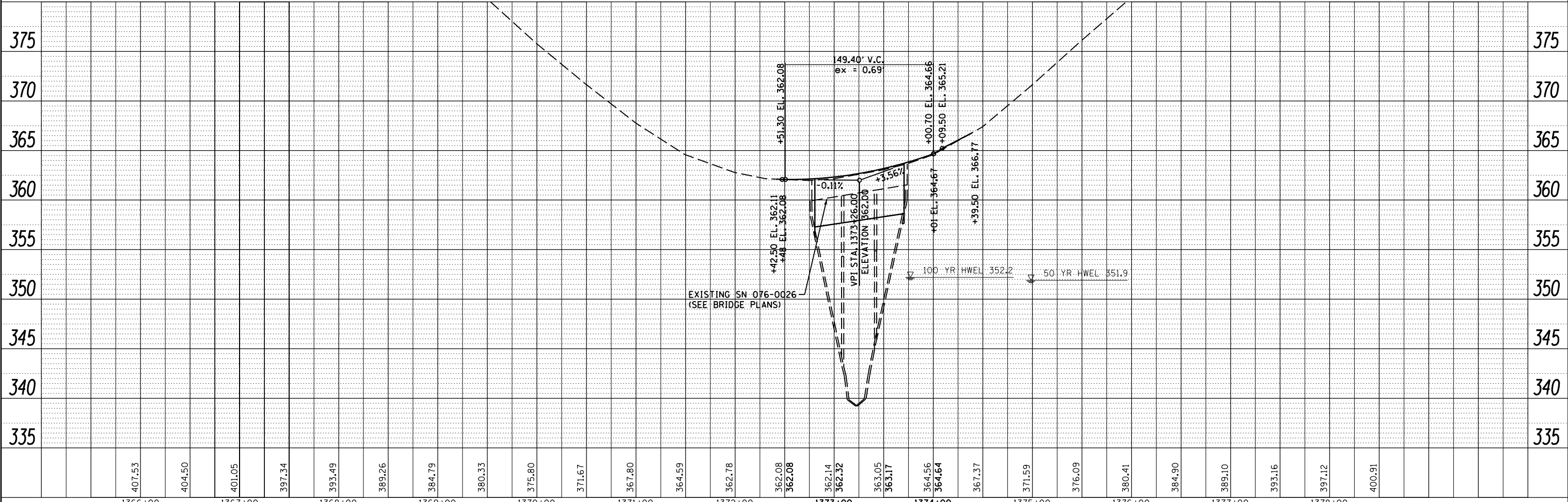
DATE	
BY	
PLAN	
NO.	
NO.	
NO.	
NO.	
NO.	

DATE	
BY	
PROFILE	
NO.	
NO.	
NO.	
NO.	
NO.	



EX STRUCTURE NO 076-0026-3 SIMPLE SPANS PRECAST PRESTRESSED CONCRETE DECK BEAMS (17" DEPTH), 101'-11" BK -BK OF ABUTMENTS, SPILL-THRU ABUTMENTS WITH CONCRETE SLOPEWALLS, SOLID CONCRETE PIERS, 35'-2" O-O DECK, 0° SKEW, CL STA. 1373+26.09

PR STRUCTURE-1 SPAN STEEL PLATE GIRDER BRIDGE ON INTEGRAL ABUTMENTS, 95'-0" BK-BK ABUTMENTS, 35'-2" O-O DECK, 0° SKEW, CL STA. 1373+26.00.



FILE NAME =	USER NAME = \$USER\$	DESIGNED -	REVISED -	<b>STATE OF ILLINOIS</b> <b>DEPARTMENT OF TRANSPORTATION</b>	<b>PLAN AND PROFILE</b> <b>IL ROUTE 146 OVER LITTLE GRAND PIERRE CREEK</b>			F.A.P. RTE.	SECTION	COUNTY	TOTAL SHEETS	SHEET NO.
c:\pwork\pwork\lavenderba\0293530\d978165-sh-t-012-plnpr-f-1-146.dgn		DRAWN -	REVISED -		885	6B-3	POPE	41	12			
PLOT SCALE = 100.000000' / 1"		CHECKED -	REVISED -		CONTRACT NO. 78165							
PLOT DATE = 1/23/2012		DATE - / /	REVISED -		ILLINOIS FED. AID PROJECT							