

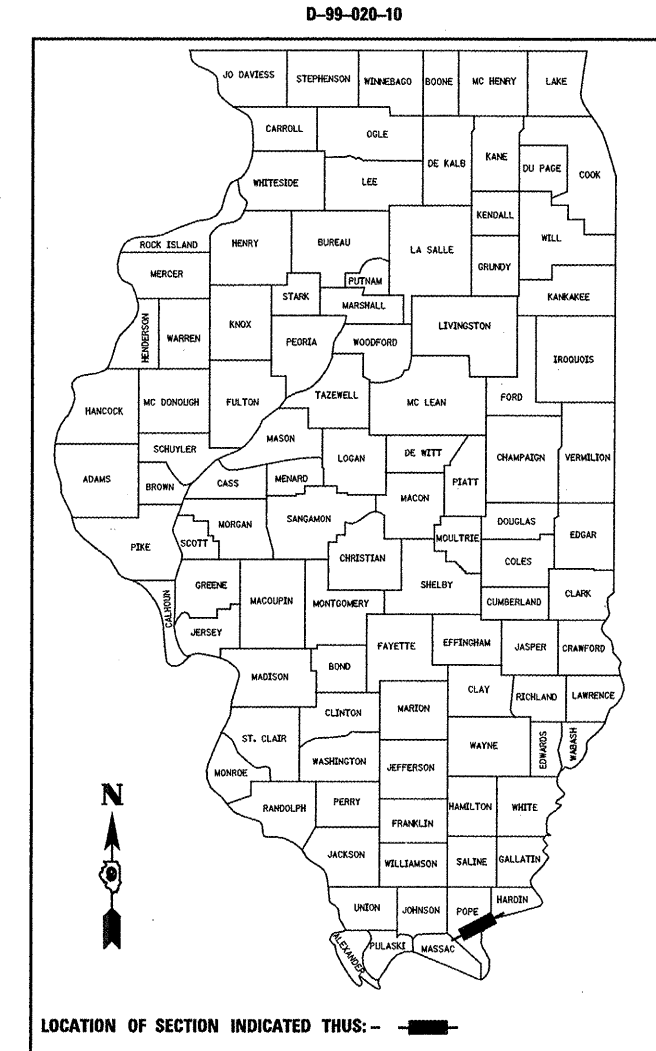
F.A.P. RTE.	SECTION	COUNTY	TOTAL SHEETS	SHEET NO.
885	6B-3	POPE	41	1
D-99-020-10		ILLINOIS	CONTRACT NO. 78165	

**INDEX OF SHEETS**

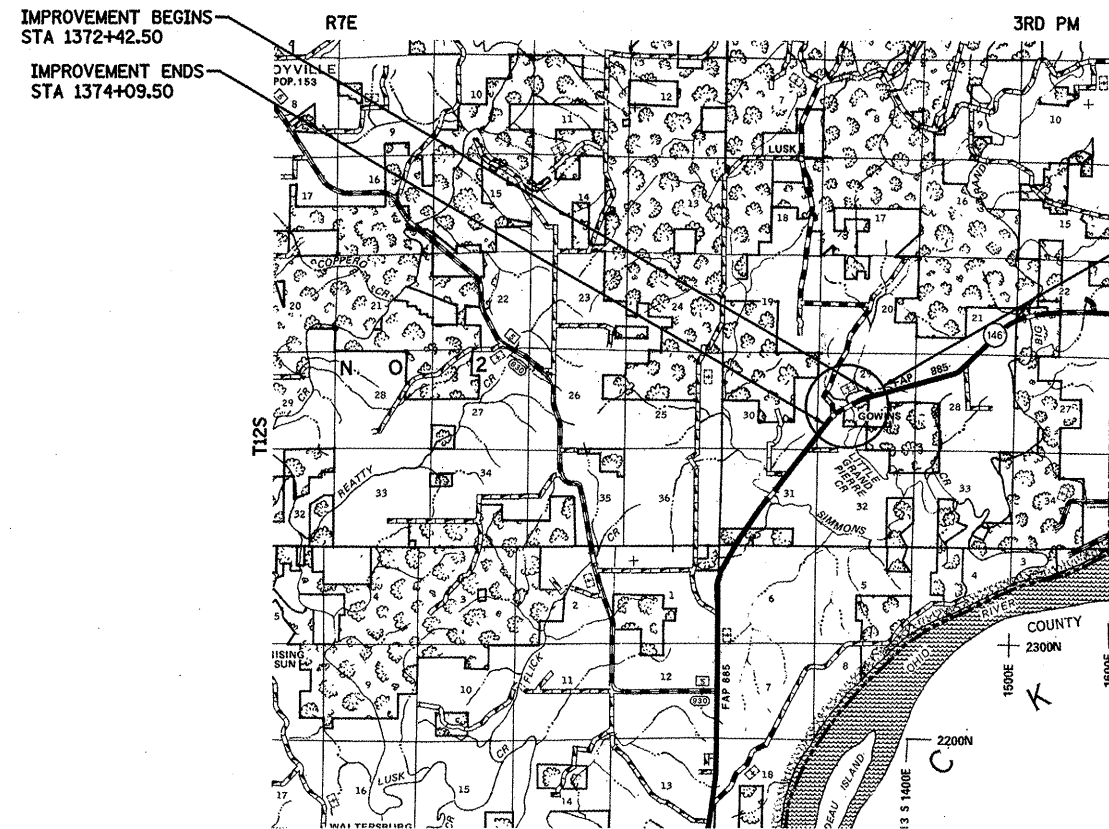
- 1 COVER
- 2 GENERAL NOTES, STANDARDS AND COMMITMENTS
- 3-6 SUMMARY OF QUANTITIES
- 7 IL 146 TYPICAL SECTION
- 8-9 SCHEDULE OF QUANTITIES
- 10 ALIGNMENT, TIES AND BENCHMARK
- 11 REMOVAL PLAN
- 12 PLAN & PROFILE
- 13-14 STAGE 1 & 2 TRAFFIC CONTROL PLAN
- 15 WIDE LOAD DETOUR SIGNING
- 16 EROSION CONTROL DETAILS
- 17 DISTRICT 9 STANDARDS
- 18-21 CROSS SECTIONS
- 22-41 BRIDGE PLANS

**STATE OF ILLINOIS**  
**DEPARTMENT OF TRANSPORTATION**  
**DIVISION OF HIGHWAYS**  
**PROPOSED**  
**HIGHWAY PLANS**

**FAP ROUTE 885 (IL 146)**  
**SECTION 6B-3**  
**PROJECT ACF-0885(045)**  
**POPE COUNTY**  
**C-99-020-10**  
**STRUCTURE REPLACEMENT OVER**  
**LITTLE GRAND PIERRE CREEK**



**FUNCTIONAL CLASSIFICATION: MINOR ARTERIAL (NON-URBAN)**  
**ADT: 1520 (2008) ADTT: 9%**  
**2028 ADT = 1850**  
**P.U. = 90.5% S.U. = 6.8% M.U. = 2.7%**  
**ROAD DISTRICT #2**



**PROJECT LOCATION**  
**BRIDGE REPLACEMENT**  
**EX SN 076-0026**  
**PR SN 076-0030**  
**STA 1373+26.00 0° SKEW**  
**95'-0" BK TO BK ABUTMENTS**  
**35'-2" STRUCTURE WIDTH**

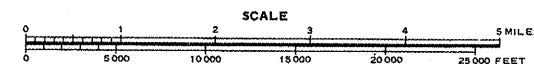


FULL SIZE PLANS HAVE BEEN PREPARED USING STANDARD ENGINEERING SCALES. REDUCED SIZED PLANS WILL NOT CONFORM TO STANDARD SCALES. IN MAKING MEASUREMENTS ON REDUCED PLANS, THE ABOVE SCALES MAY BE USED.

**J.U.L.I.E.**  
**JOINT UTILITY LOCATION INFORMATION FOR EXCAVATION**  
**1-800-892-0123**  
**OR 811**

**PROJECT MANAGER DAVID PICHE**  
**DISTRICT 9 NO. (618) 549-2171**

**CONTRACT NO. 78165**



**GROSS LENGTH = 167.00 FT. = 0.032 MILE**  
**NET LENGTH = 167.00 FT. = 0.032 MILE**



*Mary Coombe Bloxdorf*  
 ILLINOIS PROFESSIONAL NO 43208  
 EXPIRES 11-30-13  
 DATE: 01-04-12

**CB** **Coombe-Bloxdorf P.C.**  
 -CIVIL ENGINEERS-  
 -STRUCTURAL ENGINEERS-  
 -LAND SURVEYORS-  
 Design Firm License No. 184-002703

**STATE OF ILLINOIS**  
**DEPARTMENT OF TRANSPORTATION**  
**DIVISION OF HIGHWAYS**

SUBMITTED *Jan 23rd* 2012  
*John D. Baranzelli*  
 DEPUTY DIRECTOR OF HIGHWAYS, REGION ENGINEER

*March 23 2012*  
*John D. Baranzelli P.E.*  
 ENGINEER OF DESIGN AND ENVIRONMENT

*March 23 2012*  
*William R. Trumbor*  
 DIRECTOR OF HIGHWAYS, CHIEF ENGINEER

**PRINTED BY THE AUTHORITY**  
**OF THE STATE OF ILLINOIS**