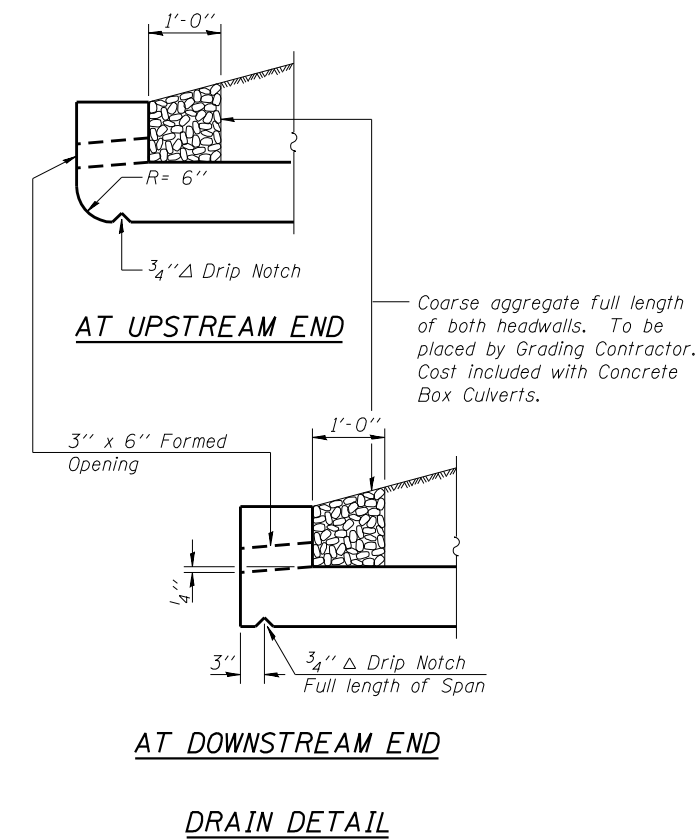


SHOWING  
REINFORCEMENT

SHOWING  
OUTLINES

PLAN



Notes:  
A distance of half the length of the wingwall but not less than six feet of the barrel shall be poured monolithically with the wingwalls.  
See Sheet 3 of 4 for Culvert Details.

FILE NAME =  
...\\1002023-78090-002-culvert.dgn  
CB PROJECT NO 08055-15

USER NAME = .CFC.  
PLOT SCALE = 0:1.999200 ' / IN.  
PLOT DATE = 12/23/2011

DESIGNED - GJB  
CHECKED - MCB  
DRAWN - MML  
CHECKED - MCB

REVISED -  
REVISED -  
REVISED -  
REVISED -

STATE OF ILLINOIS  
DEPARTMENT OF TRANSPORTATION

CULVERT PLAN  
STRUCTURE NO. 100-2023

SHEET NO. 2 OF 4 SHEETS

**CB** Coombe-Bloxdorf P.C.  
- CIVIL ENGINEERS -  
- STRUCTURAL ENGINEERS -  
- LAND SURVEYORS -  
Design Firm License No. 184-002703

F.A. RTE.	SECTION	COUNTY	TOTAL SHEETS	SHEET NO.
13B	6B-1	WILLIAMSON	19	12

CONTRACT NO. 78090  
ILLINOIS FED. AID PROJECT