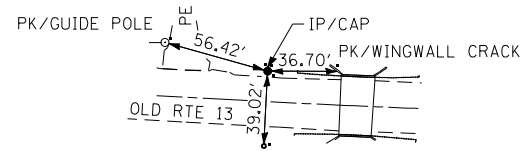


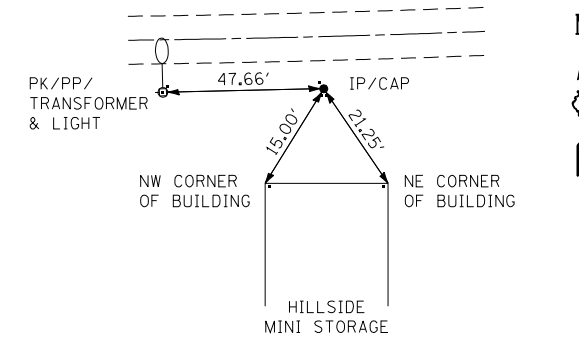
CONTROL POINT 2803

IP/CAP
 STA 235+95.33, 29.62' LT
 N 387382.9396
 E 846724.9599
 EL 497.263



CONTROL POINT 2804

IP/CAP
 STA 244+42.76, 15.87' LT
 N 387352.1173
 E 847573.5429
 EL 481.442



CONTROL POINT 2805

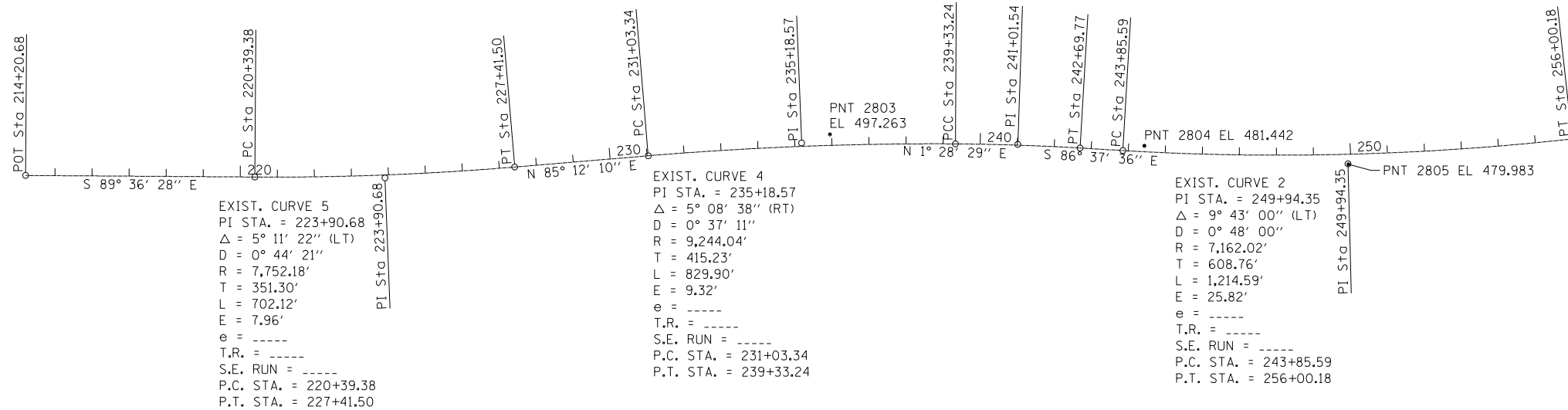
IP/CAP
 STA 249+93.95, 27.19' RT
 N 387302.2486
 E 848124.4547
 EL 479.983

BENCHMARK 102

EL 481.009
 CHISELED "□" ON THE
 S.E. CORNER OF SN 100-0065
 STA 244+70, 18' RT

ALIGNMENT COORDINATES - OLD IL 13			
OLD IL 13	STATION	N	E
PT	242+69.77	387346.2215	847400.0274
PC	243+85.59	387339.4061	847515.6515
PI	249+94.35	387303.5850	848123.3519
PT	256+00.18	387370.8431	848728.3801

EXIST. CURVE 3
 PI STA. = 241+01.54
 $\Delta = 2^\circ 55' 00''$ (RT)
 D = 0° 52' 00"
 R = 6,611.12'
 T = 168.30'
 L = 336.53'
 E = 2.14'
 e = -----
 T.R. = -----
 S.E. RUN = -----
 P.C. STA. = 239+33.24
 P.T. STA. = 242+69.77



CB Coombe-Bloxdorf P.C.
 - CIVIL ENGINEERS -
 - STRUCTURAL ENGINEERS -
 - LAND SURVEYORS -
 Design Firm License No. 184-002703

FILE NAME =	USER NAME = CFC..	DESIGNED -	REVISED -
...v8-ns\d978090-shr-006-0tb.dgn		DRAWN - CFC	REVISED -
		CHECKED - GLS	REVISED -
CB PROJECT NO 08055-15	PLOT DATE = 12/23/2011	DATE - / /	REVISED -

**STATE OF ILLINOIS
 DEPARTMENT OF TRANSPORTATION**

**ALIGNMENT, TIES AND BENCHMARKS
 CRAB ORCHARD ROAD / OLD IL 13**

SCALE: SHEET NO. OF SHEETS STA. TO STA.

S.B.I.	SECTION	COUNTY	TOTAL SHEETS	SHEET NO.
13B	6B-1	WILLIAMSON	19	6
CONTRACT NO. 78090			ILLINOIS FED. AID PROJECT	