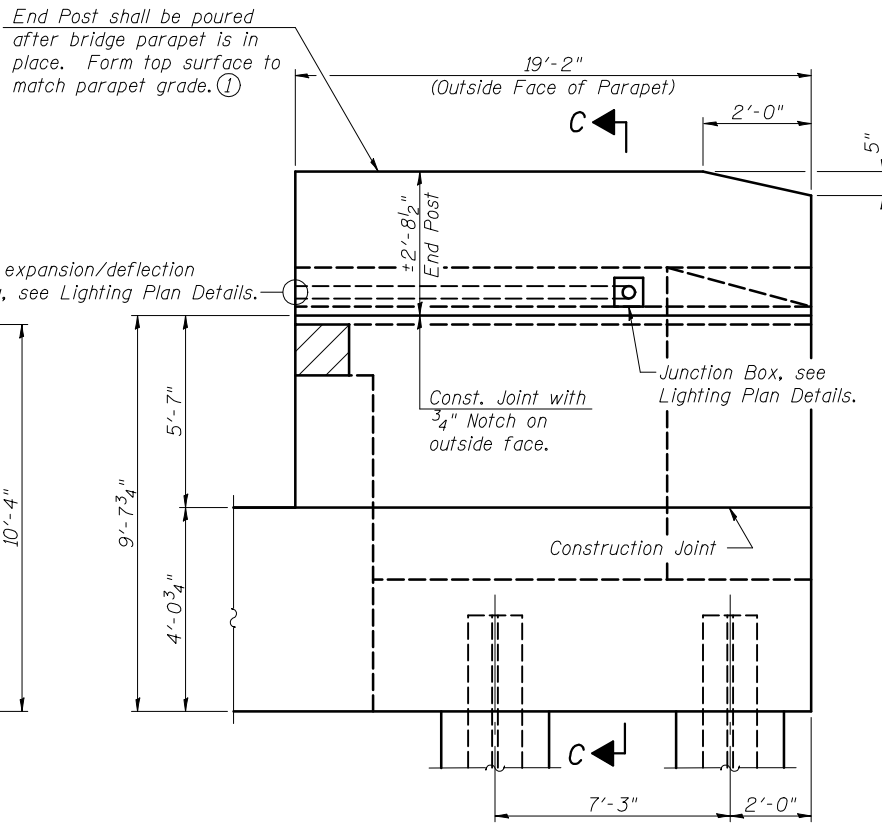
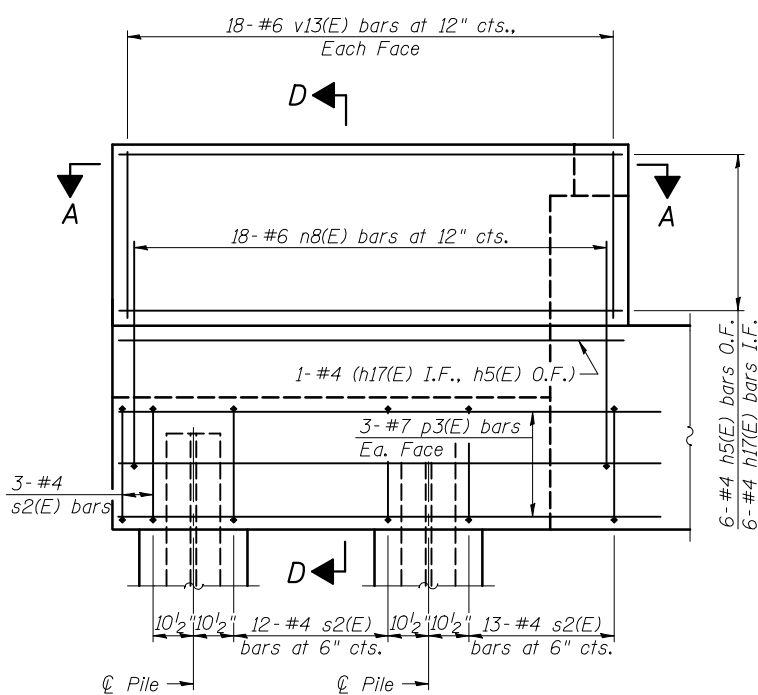


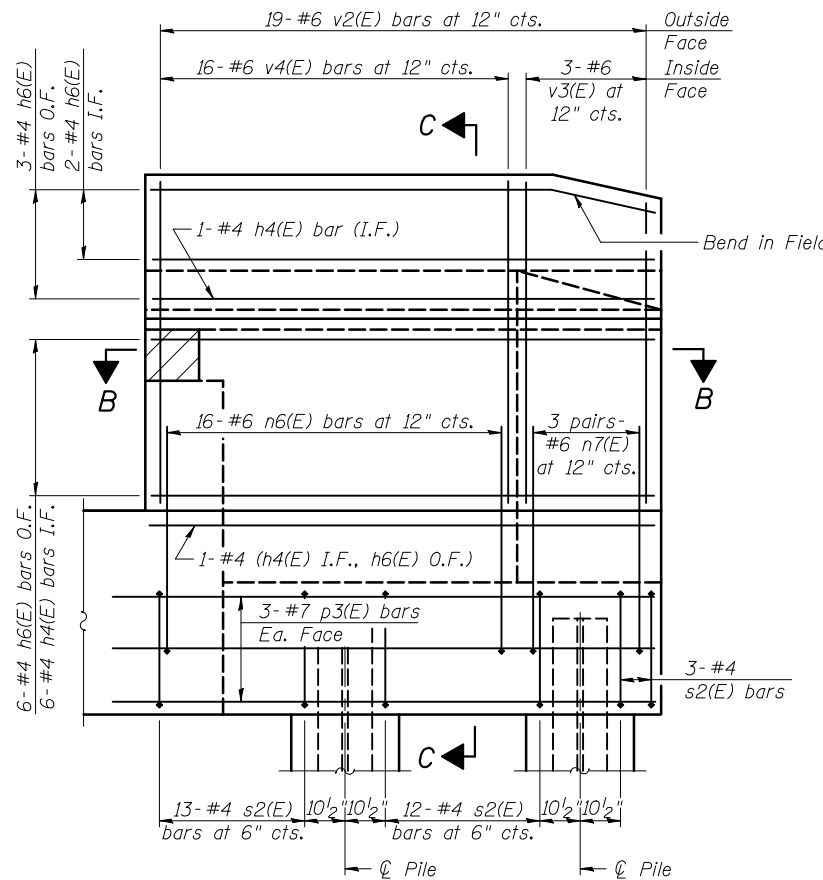
**NORTH WINGWALL ELEVATION**  
Showing Dimensions (Looking South)



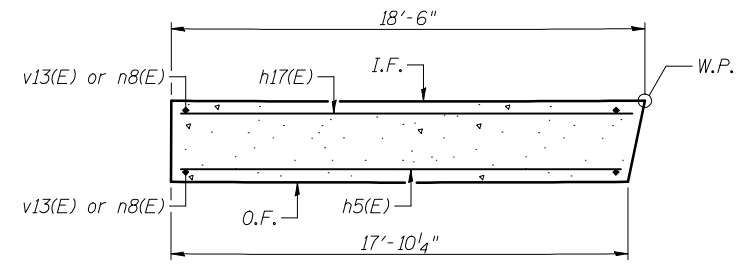
**SOUTH WINGWALL ELEVATION**  
Showing Dimensions (Looking North)



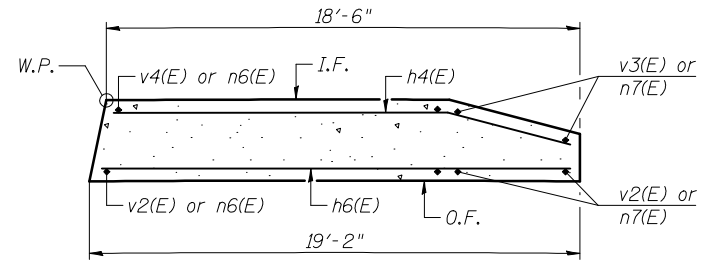
**NORTH WINGWALL ELEVATION**  
Showing Reinforcement (Looking South)



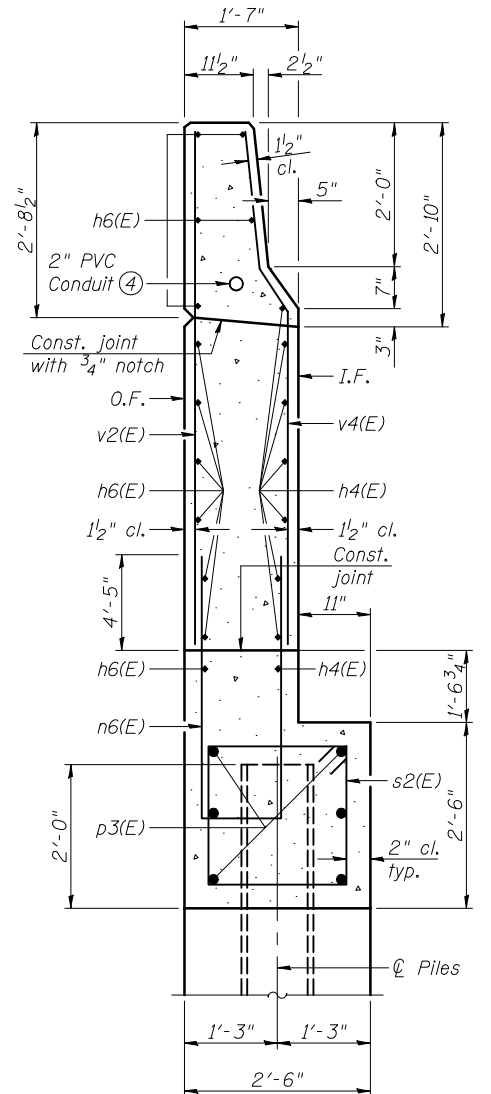
**SOUTH WINGWALL ELEVATION**  
Showing Reinforcement (Looking North)



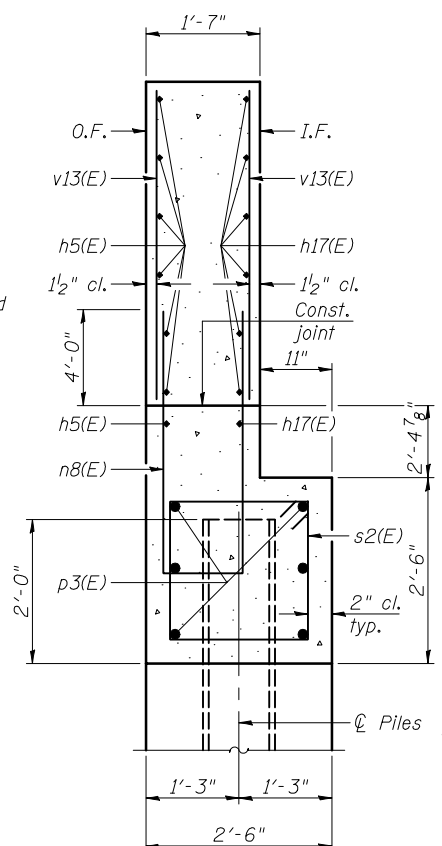
**SECTION A-A**



**SECTION B-B**



**SECTION C-C**



**SECTION D-D**

- Notes:
- Quantity of concrete in end post included with Concrete Superstructure on sheet 17 of 53.
  - For Concrete Encasement details, see sheet 47 of 53.
  - I.F. denotes inside face and O.F. denotes outside face.
  - Conduit shall have a minimum 1/2" clearance from all reinforcement. See Lighting Plan Details for additional requirements.
  - Conduit not shown for clarity.
  - Hatched area to be poured after superstructure falsework has been removed.



11400  
Eastport Business Center 1  
100 Lamar Court, Suite 100  
Columbia, S. Carolina  
918.545.2200  
918.545.7200

MISSOURI  
Landscape One Building  
720 Olive, Suite 1000  
St. Louis, MO 63101  
314.588.5081  
314.588.9005

www.bayerassociates.com

USER NAME =	DESIGNED - JAD	REVISED -
	CHECKED - DGL	REVISED -
PLOT SCALE =	DRAWN - JAD	REVISED -
PLOT DATE =	CHECKED - MAG	REVISED -

**STATE OF ILLINOIS  
DEPARTMENT OF TRANSPORTATION**

**EAST ABUTMENT DETAILS  
STRUCTURE NO. 039-0076 (W.B.)**

SHEET NO. 36 OF 53 SHEETS

F.A.P. RTE.	SECTION	COUNTY	TOTAL SHEETS	SHEET NO.
331	(12-11B-1)	JACKSON	200	148
CONTRACT NO. 78056				
ILLINOIS FED. AID PROJECT				