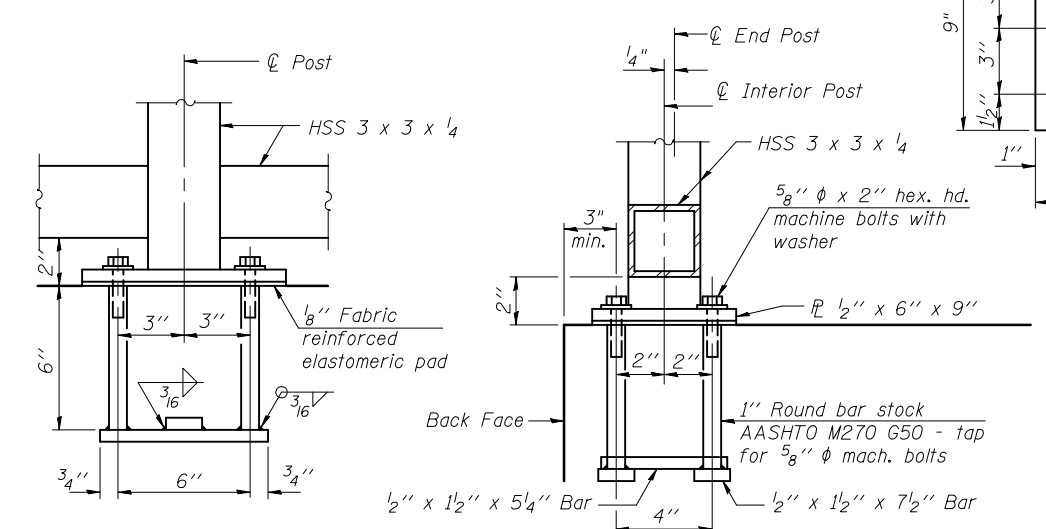


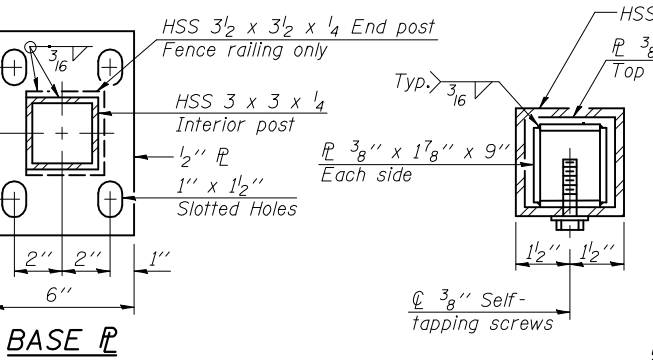
Note:
All steel rail elements shall be galvanized according to Article 509.05 of the Standard Specifications.

*See Sheets 13, 14, 18, 19, 21 and 22 of 53 for dimensions

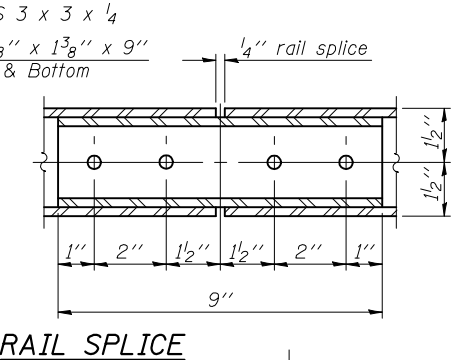


ANCHOR BOLT DETAILS

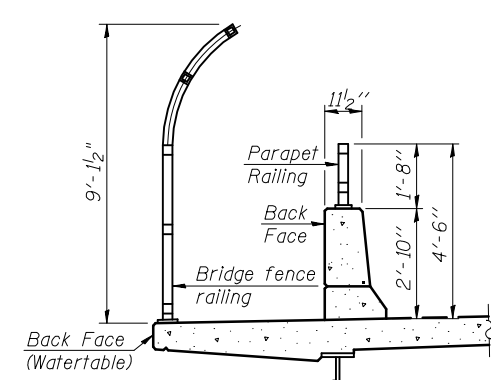
In lieu of the cast-in-place anchor device shown, the Contractor has the option of drilling and setting 5/8" ϕ anchor rods according to Article 509.06 of the Standard Specifications. Embedment shall be according to the manufacturer's specifications.



BASE PL



RAIL SPLICE



SECTION THRU DECK

SECTION B-B

VIEW D-D

SECTION E-E

PARAPET RAILING ELEVATION AT ABUTMENT AND APPROACH BENT JOINT
(Two element rail shown - Three element rail similar)

PARAPET RAILING ELEVATION
(Inside Face of Three Element Rail)

PARAPET RAILING ELEVATION
(Inside Face of two element rail)

BILL OF MATERIAL

Item	Unit	Quantity
Bridge Fence Railing (Sidewalk)	Foot	575
Parapet Railing	Foot	571

(10'-0" Maximum Post Spacing)



USER NAME =	DESIGNED - MAG	REVISED -
	CHECKED - JAD	REVISED -
PLOT SCALE =	DRAWN - MAG	REVISED -
PLOT DATE =	CHECKED - JAD	REVISED -

**STATE OF ILLINOIS
DEPARTMENT OF TRANSPORTATION**

**BRIDGE FENCE RAILING, SIDEWALK MOUNTED
STRUCTURE NO. 039-0076 (W.B.)**

SHEET NO. 24 OF 53 SHEETS

F.A.P. RTE. 331	SECTION (12-11B-1)	COUNTY JACKSON	TOTAL SHEETS 200	SHEET NO. 136
CONTRACT NO. 78056				
ILLINOIS FED. AID PROJECT				