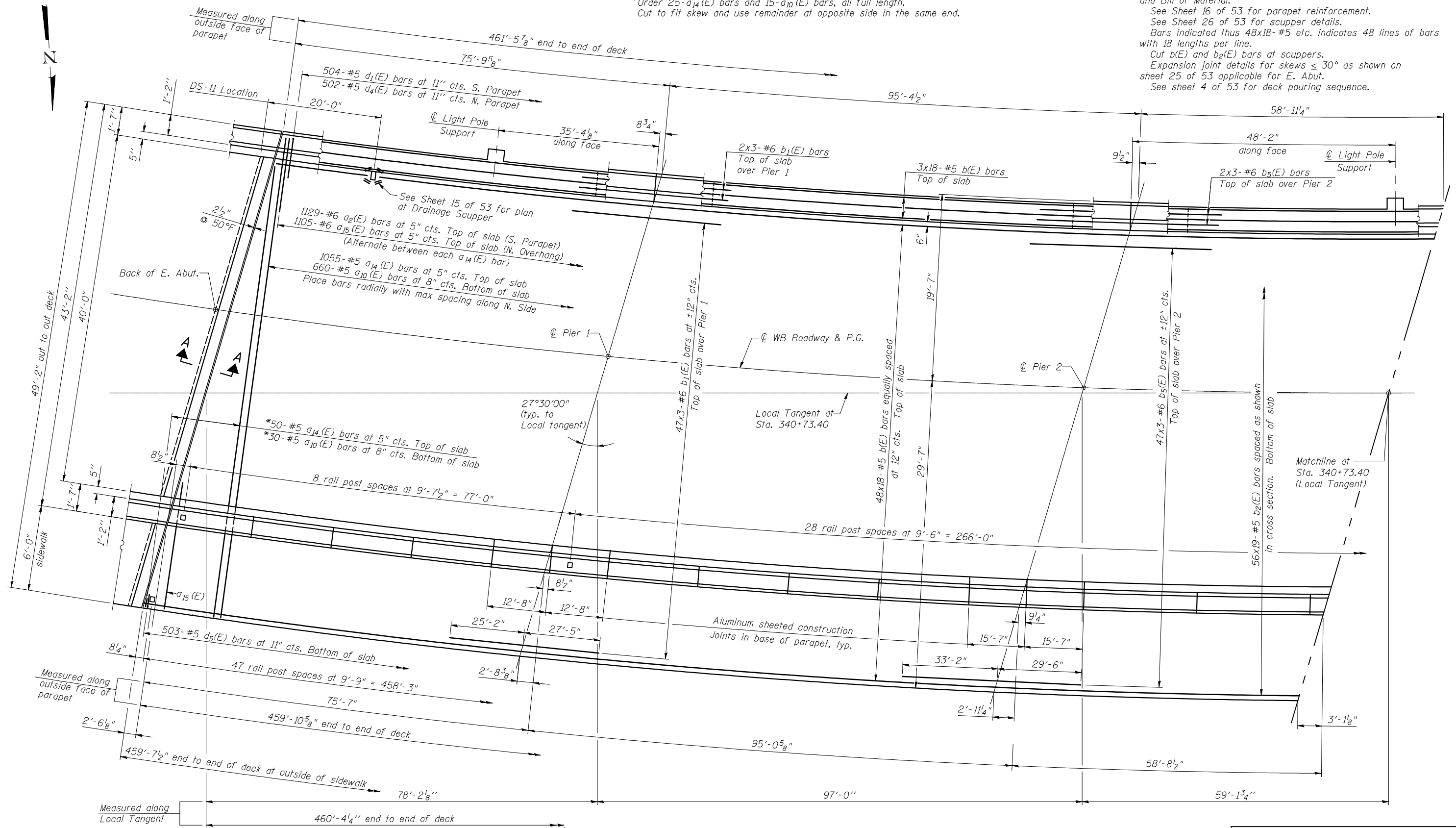


Notes:
 See Sheet 17 of 53 for Section A-A, Section through parapet and Bill of Material.
 See Sheet 16 of 53 for parapet reinforcement.
 See Sheet 26 of 53 for scupper details.
 Bars indicated thus 48x18-#5 etc. indicates 48 lines of bars with 18 lengths per line.
 Cut b(E) and b₂(E) bars at scuppers.
 Expansion joint details for skewers ≤ 30° as shown on sheet 25 of 53 applicable for E. Abut.
 See sheet 4 of 53 for deck pouring sequence.

*Order 25-a₁₄(E) bars and 15-a₁₀(E) bars, all full length.
 Cut to fit skew and use remainder at opposite side in the same end.



PARTIAL PLAN

MINIMUM BAR LAP

- #5 bar = 2'-7"
- #6 bar = 3'-1" bars over piers
- #6 bar = 4'-5" bars at end of deck

CB Coombe-Bloxdorf P.C.
 - CIVIL ENGINEERS-
 - STRUCTURAL ENGINEERS-
 - LAND SURVEYORS-
 Design Firm License No. 184-002703

FILE NAME =	USER NAME = #USER*	DESIGNED - GB	REVISED -
#FILEL#		CHECKED - MCB	REVISED -
	PLOT SCALE = #SCALE#	DRAWN - MML	REVISED -
CB PROJECT NO. 08024-2	PLOT DATE = #DATE#	CHECKED - CME	REVISED -

**STATE OF ILLINOIS
 DEPARTMENT OF TRANSPORTATION**

**SUPERSTRUCTURE
 STRUCTURE NO. 039-0076 (WB)**

SHEET NO. 13 OF 53 SHEETS

F.A.P. RTE.	SECTION	COUNTY	TOTAL SHEETS	SHEET NO.
331	(12-1)B-1	JACKSON	200	125
CONTRACT NO. 78056				

ILLINOIS FED. AID PROJECT