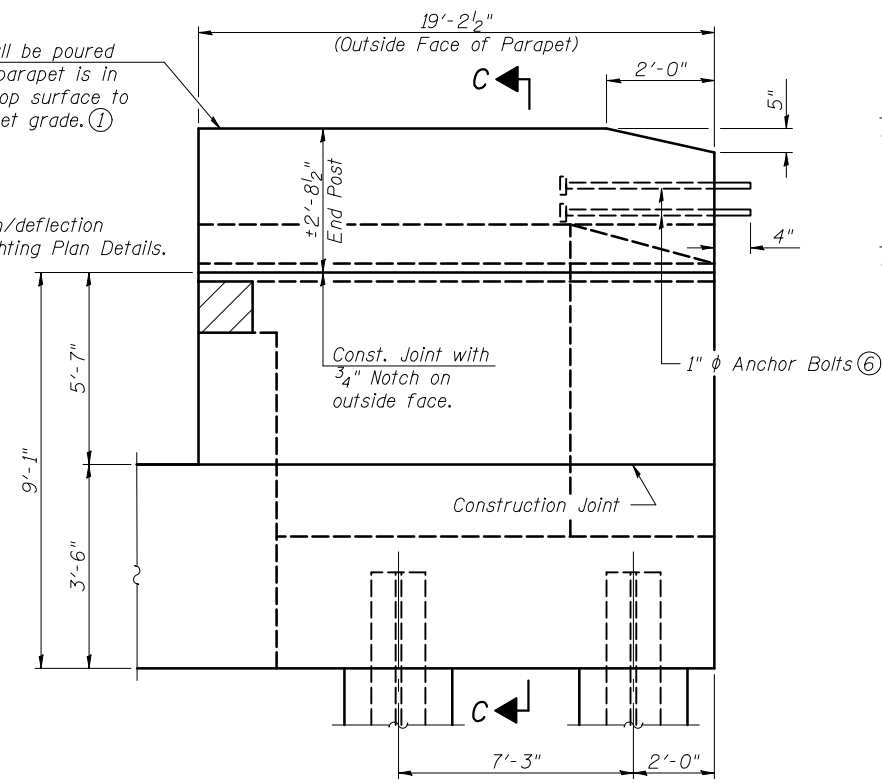
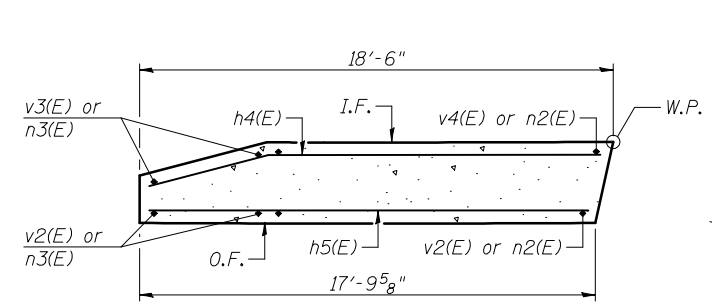


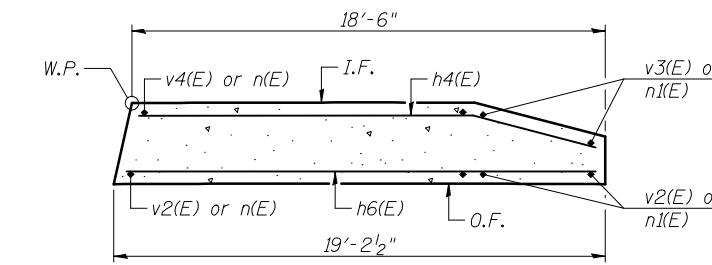
NORTH WINGWALL ELEVATION
Showing Dimensions (Looking South)



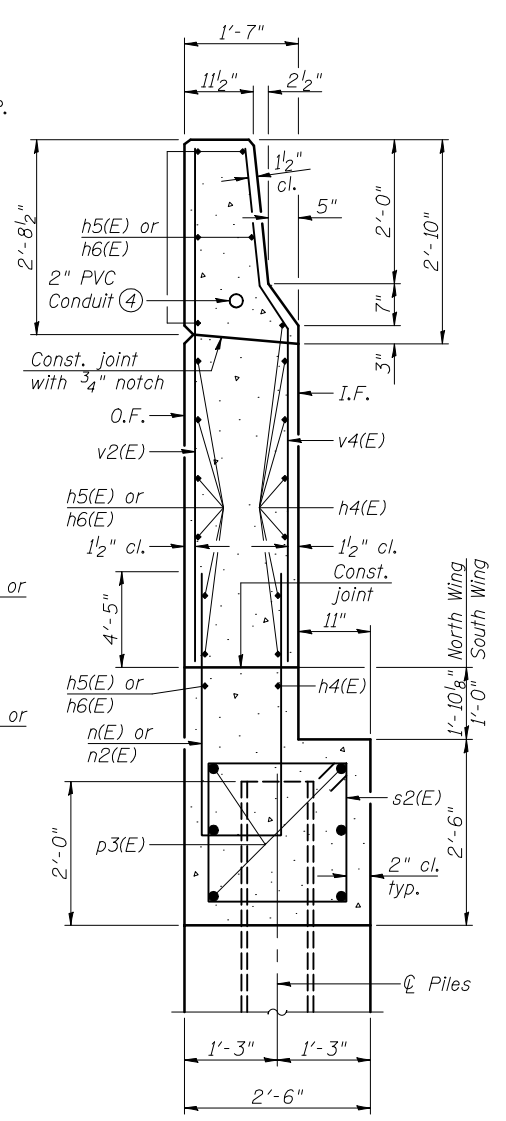
SOUTH WINGWALL ELEVATION
Showing Dimensions (Looking North)



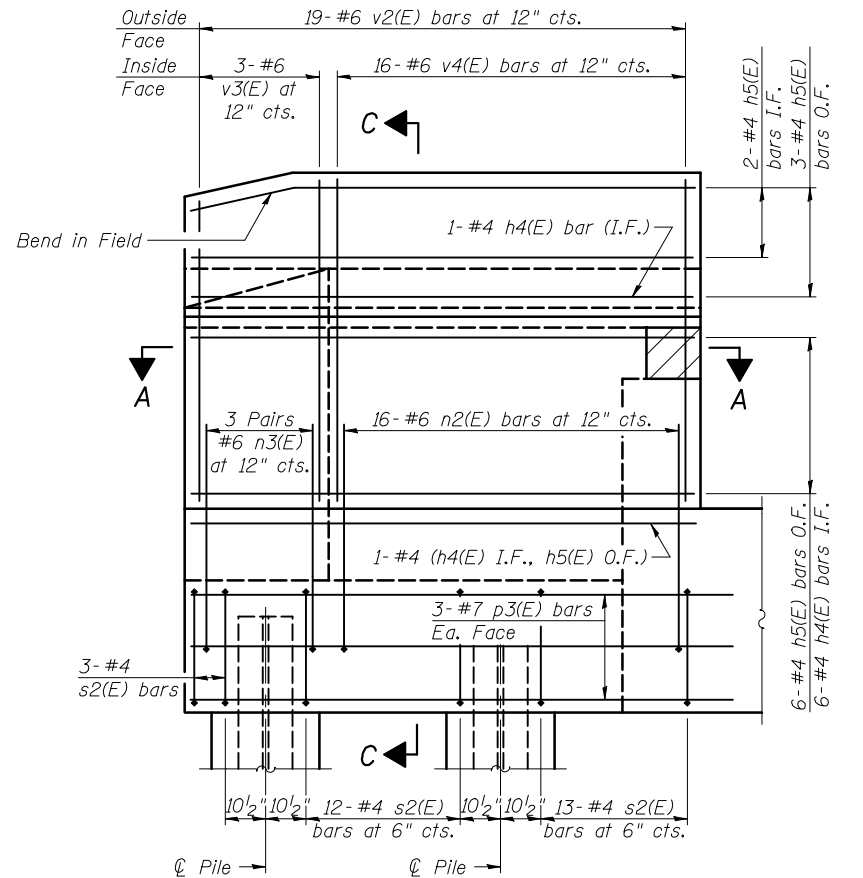
SECTION A-A



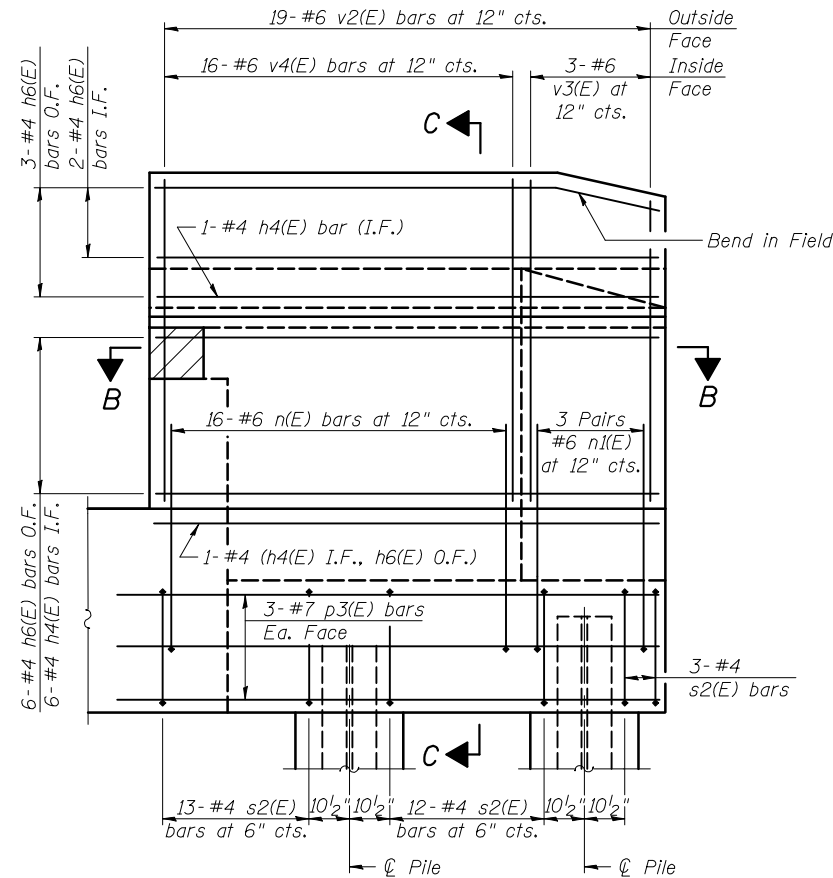
SECTION B-B



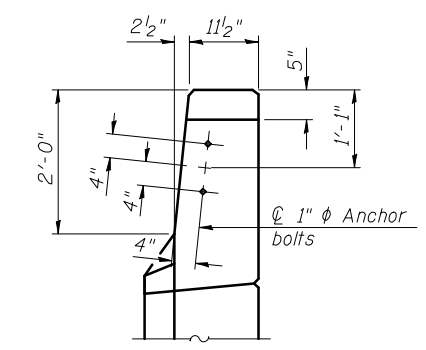
SECTION C-C



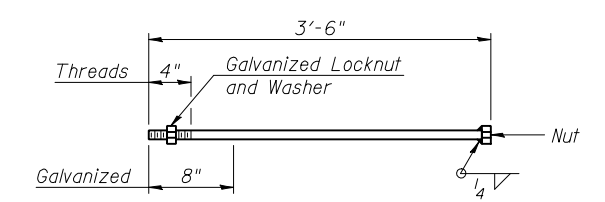
NORTH WINGWALL ELEVATION
Showing Reinforcement (Looking South)



SOUTH WINGWALL ELEVATION
Showing Reinforcement (Looking North)



VIEW D-D
(Showing North Wingwall, South Wingwall similar)



1\"/>

Notes:

- ① Quantity of concrete in end post included with Concrete Superstructure on sheet 17 of 53.
- ② For Concrete Encasement details, see sheet 46 of 53.
- ③ I.F. denotes inside face and O.F. denotes outside face.
- ④ Conduit in North Wingwall only. Conduit shall have a minimum 1/2" clearance from all reinforcement. See Lighting Plan Details for additional requirements.
- ⑤ Conduit not shown for clarity.
- ⑥ Cost included with Concrete Superstructure on sheet 17 of 53.
- ⑦ Hatched area to be poured after superstructure falsework has been removed.



USER NAME =	DESIGNED - JAD	REVISED -
PLOT SCALE =	CHECKED - DGL	REVISED -
PLOT DATE =	DRAWN - JAD	REVISED -
	CHECKED - MAG	REVISED -

**STATE OF ILLINOIS
DEPARTMENT OF TRANSPORTATION**

**EAST ABUTMENT DETAILS
STRUCTURE NO. 039-0075 (E.B.)**

SHEET NO. 35 OF 53 SHEETS

F.A.P. RTE.	SECTION	COUNTY	TOTAL SHEETS	SHEET NO.
331	(12-1)B-1	JACKSON	200	94
CONTRACT NO. 78056				
ILLINOIS FED. AID PROJECT				