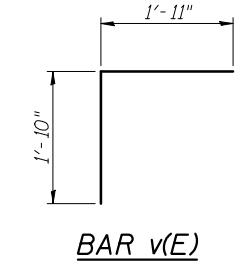
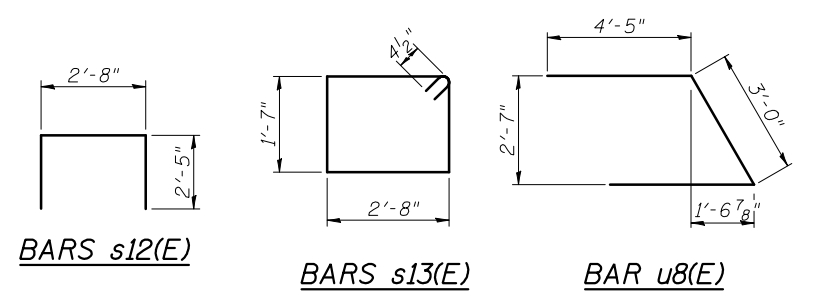


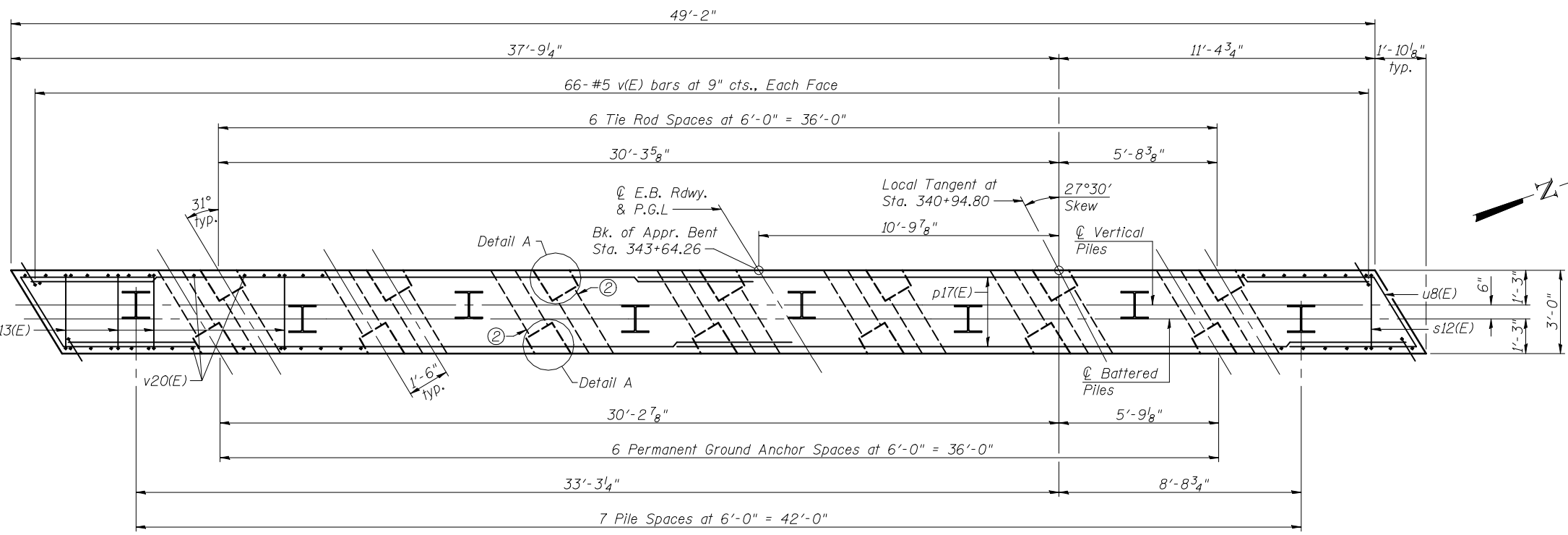
ELEVATION
(Looking West)



MIN. BAR LAP
#7 bar = 5'-10"

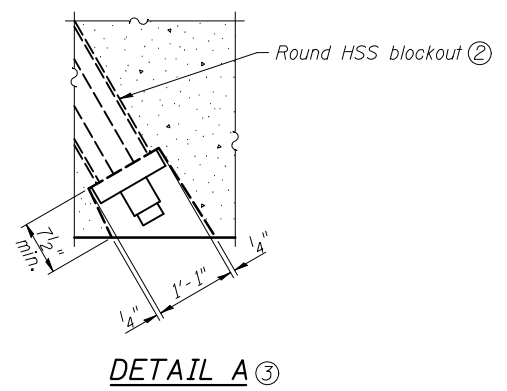
BILL OF MATERIAL

Bar	No.	Size	Length	Shape
p17(E)	48	#7	27'-4"	—
s12(E)	64	#4	7'-6"	□
s13(E)	55	#4	9'-3"	□
u8(E)	18	#6	11'-10"	∩
v(E)	132	#5	3'-9"	Γ
v20(E)	102	#5	7'-0"	—
Structure Excavation		Cu. Yd.	126	
Concrete Structures		Cu. Yd.	42.4	
Reinforcement Bars, Epoxy Coated		Pound	4,920	
Furnishing Steel Piles HP14x89		Foot	728	
Driving Piles		Foot	728	

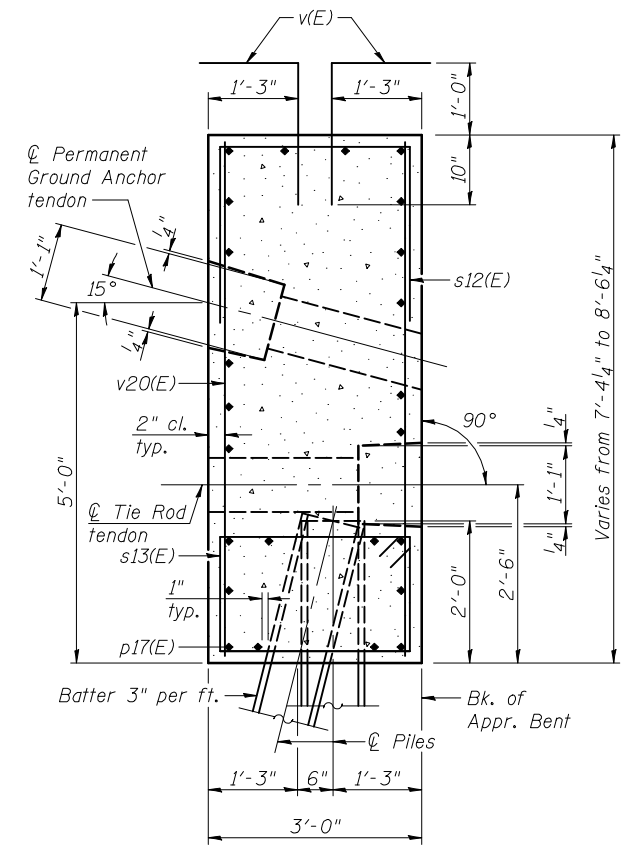


PLAN

PILE DATA
Type: Steel HP 14x89
Nominal Required Bearing: 705 kips
Factored Resistance Available: 390 kips
Est. Length: 91 ft
No. Production Piles: 8
No. Test Piles: 0



- Notes:
- For details of piles, see sheet 46 of 53.
 - Round HSS9.625x0.188 conforming to the requirements of ASTM A500 Grade B cast into bent for Tie Rod and Permanent Ground Anchor blockouts. Cost included with Concrete Structures.
 - For details of Tie Rod and Permanent Ground Anchor, see sheet 39 of 53.
 - Fan bars located above the Permanent Ground Anchor blockouts.
 - Bars indicated thus 24 x 2-#7 etc. indicates 24 lines of bars with 2 lengths per line.



SEC. THRU APPR. BENT



USER NAME =	DESIGNED - JAD	REVISED -
PLOT SCALE =	CHECKED - DGL	REVISED -
PLOT DATE =	DRAWN - JAD	REVISED -
	CHECKED - DGL	REVISED -

STATE OF ILLINOIS
DEPARTMENT OF TRANSPORTATION

WEST APPROACH BENT DETAILS
STRUCTURE NO. 039-0075 (E.B.)

SHEET NO. 32 OF 53 SHEETS

F.A.P. RTE.	SECTION	COUNTY	TOTAL SHEETS	SHEET NO.
331	(12-11B-1)	JACKSON	200	91
CONTRACT NO. 78056				

ILLINOIS FED. AID PROJECT