

**SOUTH EDGE OF SHOULDER**

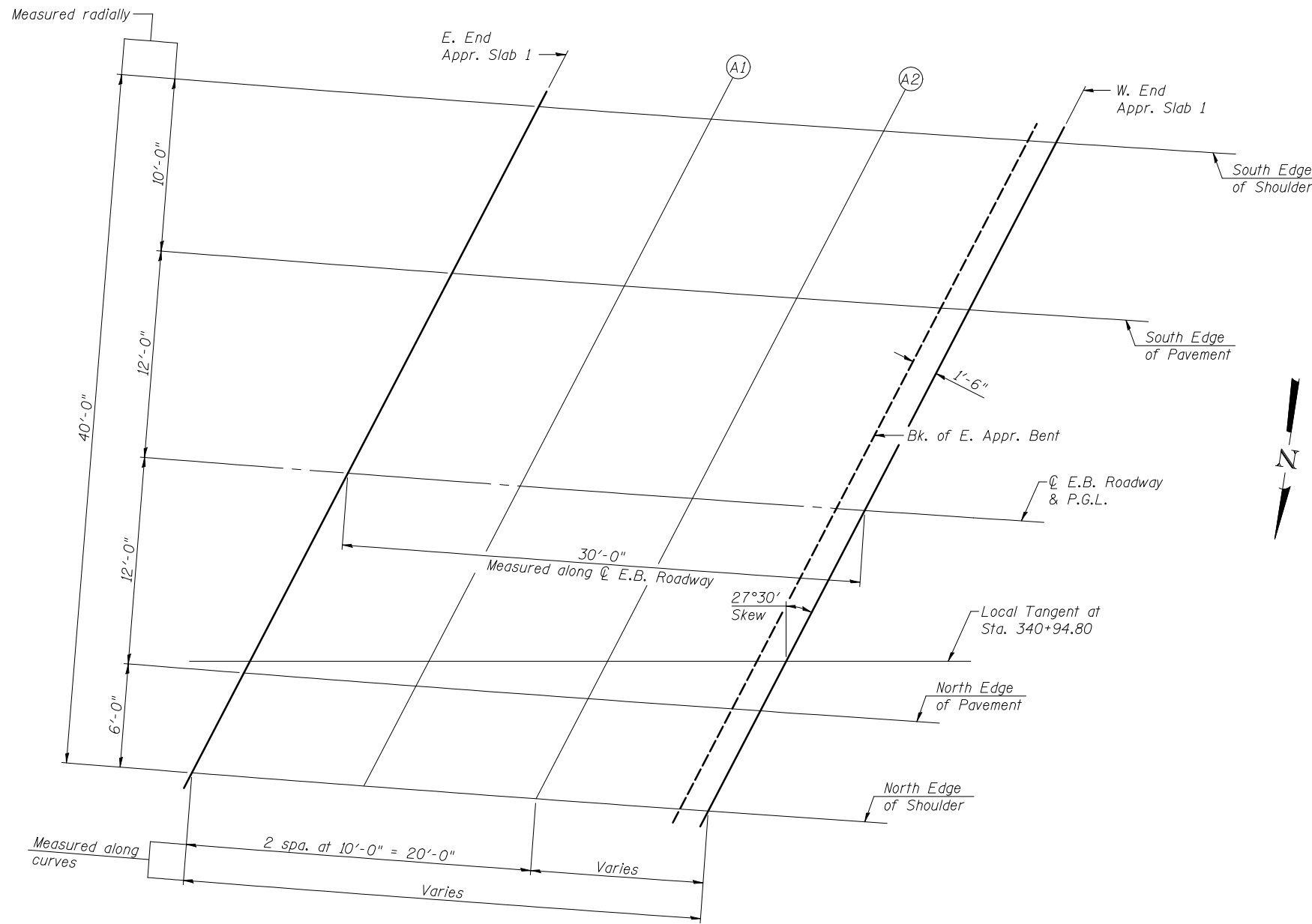
Location	Station	Offset	Theoretical Grade Elevations
E. End Appr. Slab 1	338+17.14	-22.00	382.49
A1	338+27.19	-22.00	382.54
A2	338+37.25	-22.00	382.59
W. End Appr. Slab 1	338+47.35	-22.00	382.64

**SOUTH EDGE OF PAVEMENT**

Location	Station	Offset	Theoretical Grade Elevations
E. End Appr. Slab 1	338+12.82	-12.00	382.72
A1	338+22.85	-12.00	382.77
A2	338+32.88	-12.00	382.81
W. End Appr. Slab 1	338+42.93	-12.00	382.86

**☉ E.B. ROADWAY & P.G.L.**

Location	Station	Offset	Theoretical Grade Elevations
E. End Appr. Slab 1	338+07.67	0.00	383.00
A1	338+17.67	0.00	383.04
A2	338+27.67	0.00	383.09
W. End Appr. Slab 1	338+37.67	0.00	383.14



**NORTH EDGE OF PAVEMENT**

Location	Station	Offset	Theoretical Grade Elevations
E. End Appr. Slab 1	338+02.56	12.00	383.28
A1	338+12.53	12.00	383.32
A2	338+22.49	12.00	383.36
W. End Appr. Slab 1	338+32.44	12.00	383.41

**NORTH EDGE OF SHOULDER**

Location	Station	Offset	Theoretical Grade Elevations
E. End Appr. Slab 1	338+00.01	18.00	383.42
A1	338+09.97	18.00	383.46
A2	338+19.92	18.00	383.50
W. End Appr. Slab 1	338+29.85	18.00	383.55

**PLAN**



USER NAME =	DESIGNED - JAD	REVISED -
CHECKED - DGL	REVISED -	
PLOT SCALE =	DRAWN - MAG	REVISED -
PLOT DATE =	CHECKED - JAD	REVISED -

**STATE OF ILLINOIS  
DEPARTMENT OF TRANSPORTATION**

**TOP OF APPROACH SLAB 1 ELEVATIONS  
STRUCTURE NO. 039-0075 (E.B.)**

SHEET NO. 9 OF 53 SHEETS

F.A.P. RTE.	SECTION	COUNTY	TOTAL SHEETS	SHEET NO.
331	(12-1)B-1	JACKSON	200	68
CONTRACT NO. 78056				

ILLINOIS FED. AID PROJECT