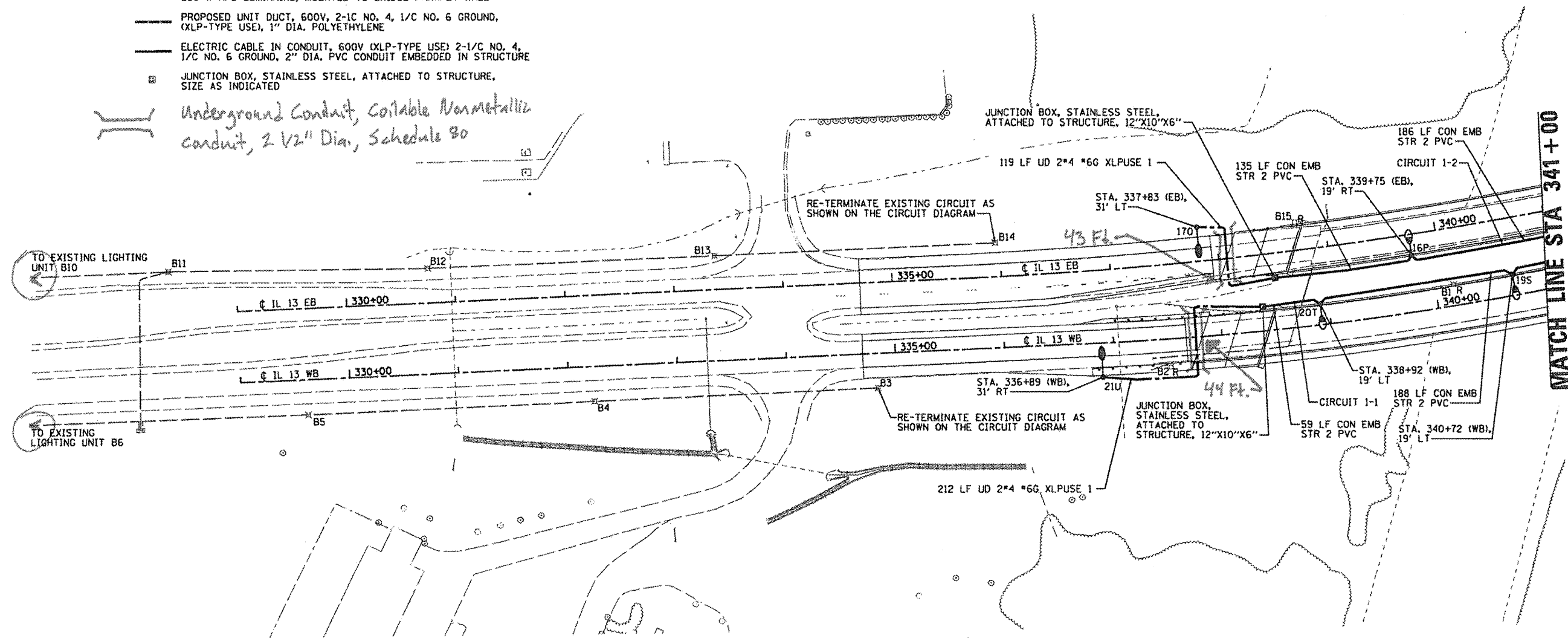


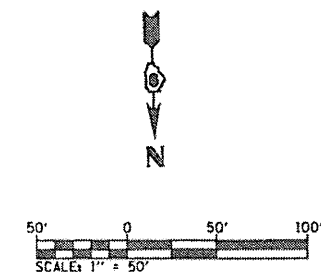
LIGHTING LEGEND

- ⊗ EXISTING LIGHTING CONTROLLER
- ⊙ EXISTING HANDHOLE
- ⊗ EXISTING LIGHTING UNIT TO REMAIN
- EXISTING UNIT DUCT
- ⊗_R EXISTING LIGHTING UNIT TO BE REMOVED, NO SALVAGE
- ⊗ LIGHT POLE, ALUMINUM, 45 FT M.H., 15 FT DAVIT ARM WITH 250 W HPS LUMINAIRE, METAL FOUNDATION
- ⊗ LIGHT POLE, ALUMINUM, 40 FT M.H., 6 FT DAVIT ARM WITH 250 W HPS LUMINAIRE, MOUNTED TO BRIDGE PARAPET WALL
- PROPOSED UNIT DUCT, 600V, 2-1C NO. 4, 1/C NO. 6 GROUND, (XLP-TYPE USE), 1" DIA. POLYETHYLENE
- ELECTRIC CABLE IN CONDUIT, 600V (XLP-TYPE USE) 2-1/C NO. 4, 1/C NO. 6 GROUND, 2" DIA. PVC CONDUIT EMBEDDED IN STRUCTURE
- ⊗ JUNCTION BOX, STAINLESS STEEL, ATTACHED TO STRUCTURE, SIZE AS INDICATED

Underground Conduit, Coilable Nonmetallic Conduit, 2 1/2" Dia., Schedule 80



NOTE 1. THE CONTRACTOR SHALL BE AWARE OF PERMANENT GROUND ANCHORS AND STEEL TIE RODS. NO ADDITIONAL COMPENSATION SHALL BE PROVIDED DUE TO CONFLICTS.



FILE NAME =	USER NAME = default	DESIGNED -	REVISED -	STATE OF ILLINOIS DEPARTMENT OF TRANSPORTATION	LIGHTING PLANS LAYOUT	F.A.P RTE.	SECTION	COUNTY	TOTAL SHEETS	SHEET NO.	
M:\28018\Hicrestation\Phase1\0978056-light.dgn		DRAWN -	REVISED -			331	(12-1)B-1	JACKSON	200	45	
PLOT SCALE = 1/8" = 1' IN.		CHECKED -	REVISED -			CONTRACT NO. 78056					
PLOT DATE = 1/25/2012		DATE -	REVISED -			ILLINOIS FED. AID PROJECT					
					SCALE: 1" = 50'	SHEET NO. 2 OF 7 SHEETS		STA.	TO STA.		