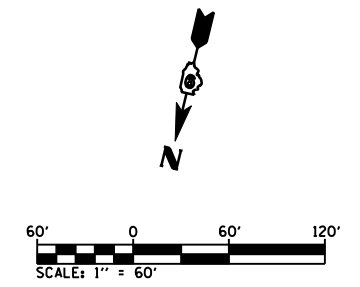
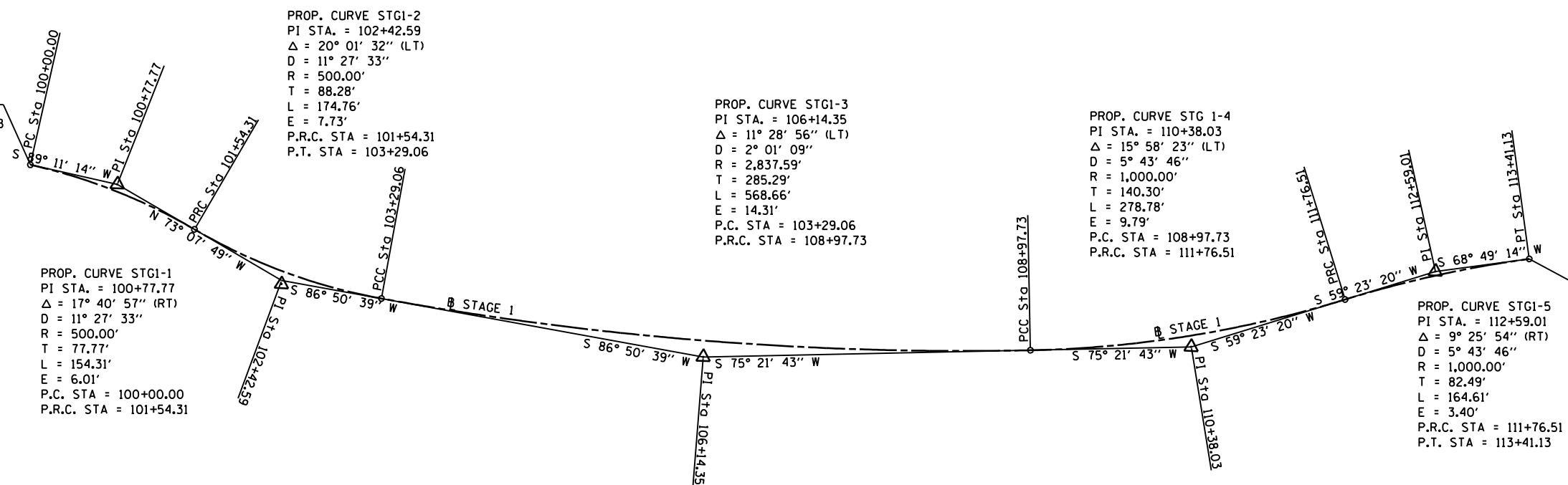


STATION EQUATION  
100+00.00 STAGE 1 =  
334+72.79 IL RTE 13 EB



PROP. CURVE STG1-1  
PI STA. = 100+77.77  
 $\Delta = 17^\circ 40' 57''$  (RT)  
D = 11° 27' 33"  
R = 500.00'  
T = 77.77'  
L = 154.31'  
E = 6.01'  
P.C. STA = 100+00.00  
P.R.C. STA = 101+54.31

PROP. CURVE STG1-2  
PI STA. = 102+42.59  
 $\Delta = 20^\circ 01' 32''$  (LT)  
D = 11° 27' 33"  
R = 500.00'  
T = 88.28'  
L = 174.76'  
E = 7.73'  
P.R.C. STA = 101+54.31  
P.T. STA = 103+29.06

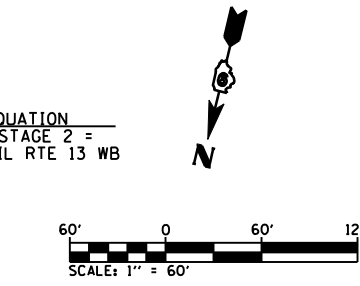
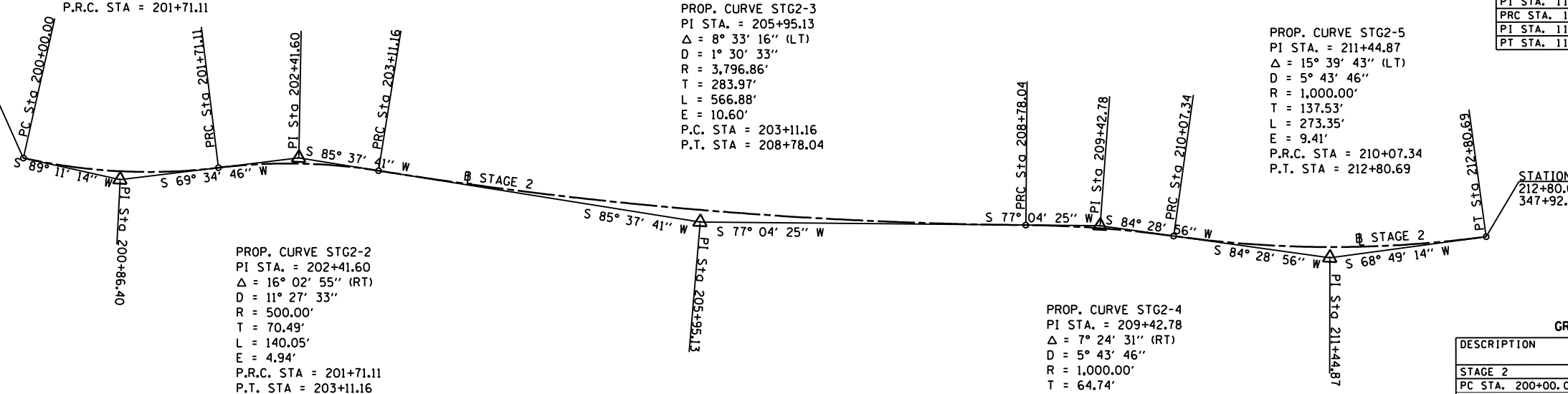
PROP. CURVE STG1-3  
PI STA. = 106+14.35  
 $\Delta = 11^\circ 28' 56''$  (LT)  
D = 2° 01' 09"  
R = 2,837.59'  
T = 285.29'  
L = 568.66'  
E = 14.31'  
P.C. STA = 103+29.06  
P.R.C. STA = 108+97.73

PROP. CURVE STG 1-4  
PI STA. = 110+38.03  
 $\Delta = 15^\circ 58' 23''$  (LT)  
D = 5° 43' 46"  
R = 1,000.00'  
T = 140.30'  
L = 278.78'  
E = 9.79'  
P.C. STA = 108+97.73  
P.R.C. STA = 111+76.51

PROP. CURVE STG1-5  
PI STA. = 112+59.01  
 $\Delta = 9^\circ 25' 54''$  (RT)  
D = 5° 43' 46"  
R = 1,000.00'  
T = 82.49'  
L = 164.61'  
E = 3.40'  
P.R.C. STA = 111+76.51  
P.T. STA = 113+41.13

STATION EQUATION  
113+41.13 STAGE 1 =  
347+90.62 IL RTE 13 EB

STATION EQUATION  
200+00.00 STAGE 2 =  
335+05.96 IL RTE 13 WB



PROP. CURVE STG2-1  
PI STA. = 200+86.40  
 $\Delta = 19^\circ 36' 28''$  (LT)  
D = 11° 27' 33"  
R = 500.00'  
T = 86.40'  
L = 171.11'  
E = 7.41'  
P.C. STA = 200+00.00  
P.R.C. STA = 201+71.11

PROP. CURVE STG2-3  
PI STA. = 205+95.13  
 $\Delta = 8^\circ 33' 16''$  (LT)  
D = 1° 30' 33"  
R = 3,796.86'  
T = 283.97'  
L = 566.88'  
E = 10.60'  
P.C. STA = 203+11.16  
P.T. STA = 208+78.04

PROP. CURVE STG2-5  
PI STA. = 211+44.87  
 $\Delta = 15^\circ 39' 43''$  (LT)  
D = 5° 43' 46"  
R = 1,000.00'  
T = 137.53'  
L = 273.35'  
E = 9.41'  
P.R.C. STA = 210+07.34  
P.T. STA = 212+80.69

GROUND COORDINATES

DESCRIPTION	NORTHING	EASTING
STAGE 1		
PC STA. 100+00.00	401,150.930	2,541,108.686
PI STA. 100+77.77	401,149.827	2,541,030.921
PRC STA. 101+54.31	401,172.397	2,540,956.496
PI STA. 102+42.59	401,198.015	2,540,872.016
PCC STA. 103+29.06	401,193.155	2,540,783.871
PI STA. 106+14.35	401,177.450	2,540,499.017
PCC STA. 108+97.73	401,105.355	2,540,222.990
PI STA. 110+38.03	401,069.899	2,540,087.242
PRC STA. 111+76.51	400,998.455	2,539,966.492
PI STA. 112+59.01	400,956.449	2,529,895.495
PT STA. 113+41.13	400,926.645	2,539,818.574

PROP. CURVE STG2-2  
PI STA. = 202+41.60  
 $\Delta = 16^\circ 02' 55''$  (RT)  
D = 11° 27' 33"  
R = 500.00'  
T = 70.49'  
L = 140.05'  
E = 4.94'  
P.R.C. STA = 201+71.11  
P.T. STA = 203+11.16

PROP. CURVE STG2-4  
PI STA. = 209+42.78  
 $\Delta = 7^\circ 24' 31''$  (RT)  
D = 5° 43' 46"  
R = 1,000.00'  
T = 64.74'  
L = 129.30'  
E = 2.09'  
P.C. STA = 208+78.04  
P.R.C. STA = 210+07.34

GROUND COORDINATES

DESCRIPTION	NORTHING	EASTING
STAGE 2		
PC STA. 200+00.00	401,215.653	2,541,074.596
PI STA. 200+86.40	401,214.428	2,540,988.204
PRC STA. 201+71.11	401,184.282	2,540,907.234
PI STA. 202+41.60	401,159.689	2,540,841.178
PRC STA. 203+11.16	401,154.316	2,540,770.896
PI STA. 205+95.13	401,132.670	2,540,487.757
PRC STA. 208+78.04	401,069.146	2,540,210.987
PI STA. 209+42.78	401,054.663	2,540,147.885
PRC STA. 210+07.34	401,048.439	2,540,083.443
PI STA. 211+44.87	401,035.214	2,539,946.547
PT STA. 212+80.69	400,985.524	2,539,818.304

FILE NAME =	USER NAME = default	DESIGNED -	REVISED -
Ms:\28018\Microstation\0Phase1\1\0978056-sh1-ATB.dgn		DRAWN -	REVISED -
		CHECKED -	REVISED -
		DATE -	REVISED -

STATE OF ILLINOIS  
DEPARTMENT OF TRANSPORTATION

ALIGNMENT AND TIE SHEETS  
IL RTE 13 OVER BIG MUDDY RIVER

SCALE: SHEET NO. 2 OF 2 SHEETS STA. TO STA.

F.A.P. RTE.	SECTION	COUNTY	TOTAL SHEETS	SHEET NO.
331	(12-1)-B-1	JACKSON	200	22
CONTRACT NO. 78056				
ILLINOIS FED. AID PROJECT				