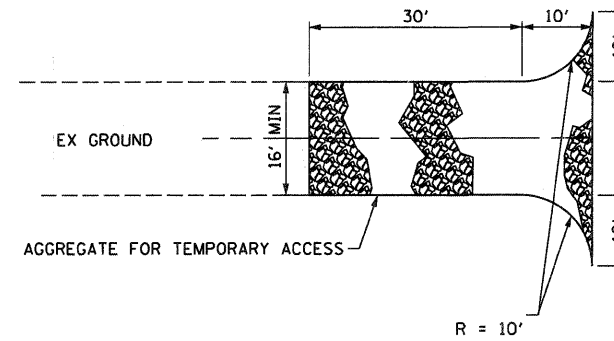


NOTES:

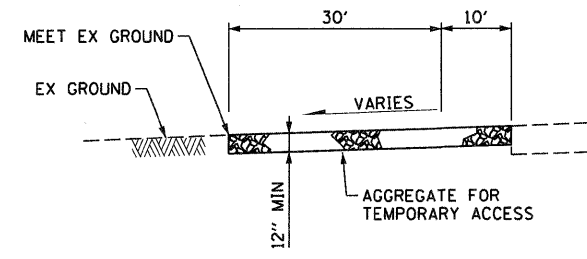
- ① CONSTRUCT SUCCEEDING BENCH CUTS AND EMBANKMENT PLACEMENT AND COMPACTION FROM BOTTOM TO TOP IN STAIRSTEP FASHION.
- ② EXISTING FORESLOPE PREPARED IN ACCORDANCE WITH ARTICLE 205.03 OF THE STANDARD SPECIFICATIONS.
- ③ BENCH CUT EXISTING FINAL SLOPE TYPICAL FOR EACH STEP.
- ④ TRIM TO FINAL SLOPE.
- ⑤ EQUAL 8-INCH LIFTS OF EMBANKMENT COMPACTED IN ACCORDANCE WITH ARTICLE 205.05 OF THE STANDARD SPECIFICATIONS.
- ⑥ EXCAVATION OF BENCH CUTS WITHIN EXISTING EMBANKMENT WILL BE PAID FOR AT THE CONTRACT UNIT PRICE PER CUBIC YARD FOR "EARTH EXCAVATION". THIS PRICE WILL INCLUDE ALL LABOR AND MATERIAL, NO ADDITIONAL COMPENSATION WILL BE ALLOWED.
- ⑦ SLOPES SHALL BE BENCHED ACCORDING TO THIS DETAIL WHEN THE SLOPE IS STEEPER THAN 4:1 AND THE HEIGHT IS GREATER THAN 5'.

TYPICAL BENCHING DETAIL FOR EMBANKMENT

SCALE: NONE



PLAN VIEW
SCALE: NONE

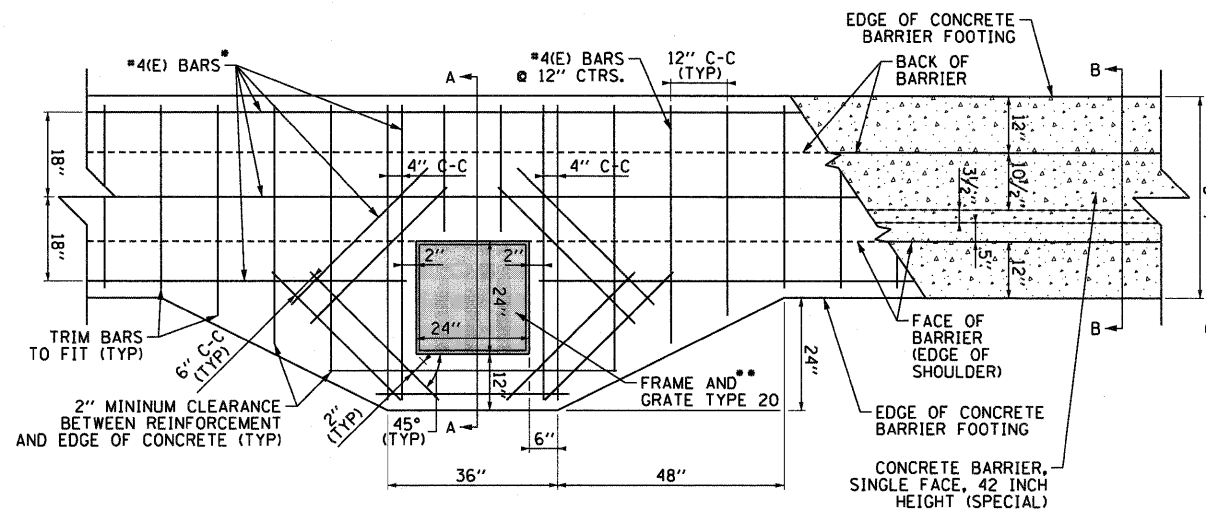


PROFILE
SCALE: NONE

TYPICAL STABILIZED CONSTRUCTION ENTRANCE DETAIL
(AGGREGATE FOR TEMPORARY ACCESS)

NOTES:

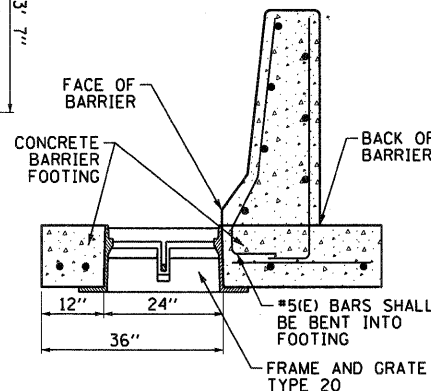
1. STONE
 - A. AGGREGATE FOR TEMPORARY ACCESS
 - B. LENGTH - AS REQUIRED, BUT NOT MORE THAN 30 FEET.
 - C. THICKNESS - 12" MINIMUM
2. WIDTH - 16 FOOT MINIMUM FOR ONE WAY TRAFFIC; 24 FOOT MINIMUM FOR TWO WAY TRAFFIC; BUT NOT LESS THAN THE FULL WIDTH AT POINTS WHERE INGRESS OR EGRESS OCCURS.
3. MAINTENANCE - THE ENTRANCE SHALL BE MAINTAINED IN A CONDITION WHICH SHALL PREVENT TRACKING OR FLOWING OF SEDIMENT ONTO PUBLIC RIGHT-OF-WAY. THIS MAY REQUIRE PERIODIC TOP DRESSING WITH ADDITIONAL STONE AS CONDITIONS DEMAND AND REPAIR AND/OR CLEAN OUT OF ANY MEASURES USED TO TRAP SEDIMENT. ALL SEDIMENT SPILLED, DROPPED, WASHED OR TRACKED ONTO PUBLIC RIGHT-OF-WAY SHALL BE REMOVED IMMEDIATELY. THIS WILL BE INCLUDED IN THE COST OF THE CONTRACT.
4. PERIODIC INSPECTION AND NEEDED MAINTENANCE SHALL BE PROVIDED AFTER HEAVY USE AND EACH RAINFALL EVENT.
5. COST OF EARTH EXCAVATION USED TO CONSTRUCT THE CONSTRUCTION ENTRANCE SHALL BE INCLUDED IN THE UNIT PRICE FOR AGGREGATE FOR TEMPORARY ACCESS.
6. THE LOCATIONS AND DIMENSIONS OF STABILIZED CONSTRUCTION ENTRANCE SHALL BE APPROVED BY THE ENGINEER.



PLAN VIEW
TYPICAL DETAIL FOR CONCRETE BARRIER FOOTING
TRANSITION AROUND DRAINAGE STRUCTURE

SCALE: NONE

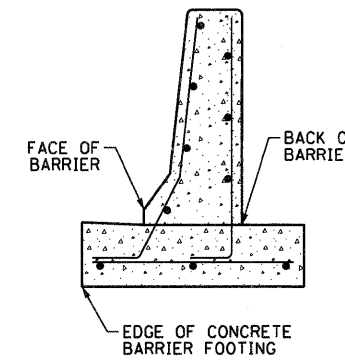
- #4(E) BARS ARE TO BE USED FOR ALL REINFORCEMENT IN THE CONCRETE BARRIER FOOTING.
- SEE PLANS FOR DRAINAGE STRUCTURE DETAILS AND LOCATIONS.
- THE COST OF REINFORCEMENT AND FOOTING TRANSITION SHALL BE INCLUDED IN THE COST OF CONCRETE BARRIER, SINGLE FACE, 42 INCH HEIGHT (SPECIAL).



SECTION A-A
CONCRETE BARRIER, SINGLE FACE, 42 INCH
HEIGHT (SPECIAL) AT DRAINAGE STRUCTURE

SCALE: NONE

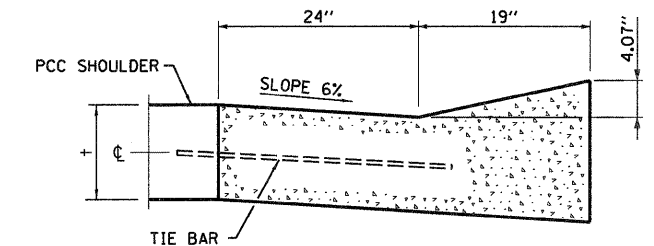
- 2" MINIMUM CLEARANCE BETWEEN REINFORCEMENT AND EDGE OF CONCRETE.
- SEE SHEET 499 OF 629 FOR DIMENSIONS AND REINFORCEMENT DETAILS.



SECTION B-B
CONCRETE BARRIER, SINGLE FACE,
42 INCH HEIGHT (SPECIAL)

SCALE: NONE

- 2" MINIMUM CLEARANCE BETWEEN REINFORCEMENT AND EDGE OF CONCRETE.
- SEE SHEET 499 OF 629 FOR DIMENSIONS AND REINFORCEMENT DETAILS.



COMBINATION CONCRETE CURB AND GUTTER, TYPE B-6.24 (MODIFIED)

| ALIGNMENT | FROM | TO | OFFSET |
|---------------------------|----------|-----------|--------|
| | STA | STA | |
| I-55 NB | 64+50.00 | 67+12.88 | RT |
| I-55 NB | 69+57.16 | 73+75.20 | RT |
| I-55 SB | 74+96.57 | 78+25.00 | RT |
| I-55 SB | 84+43.23 | 85+75.00 | LT |
| I-64 WB | 98+56.82 | 101+54.87 | RT |
| RAMP 64W70W / RAMP 64W55N | 51+94.72 | 52+00.55 | RT |
| RAMP 70E64E | 69+02.73 | 69+27.79 | RT |
| RAMP 70E64E / I-64 EB | 70+31.41 | 35+85.00 | RT |
| I-64 EB | 39+01.00 | 42+00.12 | RT |
| RAMP 64W55N | 54+25.00 | 54+92.97 | RT |
| RAMP 64W55N | 55+94.04 | 56+75.00 | RT |
| RAMP 64W55N | 63+90.00 | 71+65.13 | RT |
| RAMP 55N64E | 58+73.85 | 63+11.92 | RT |

NOTES:

1. EXCEPT FOR DIMENSIONS OF CURB AND GUTTER SHOWN HERE, ALL OTHER DETAILS IN STANDARD 606001 SHALL APPLY.
2. UNLESS NOTED OTHERWISE, ALL COMBINATION CONCRETE CURB AND GUTTER SHALL BE "DEPRESSED".

FILE NAME = DBT-r-76C52-ht-details-01.dgn

USER NAME = sear-sb
PLOT SCALE = 20.000' / 1" =
PLOT DATE = 1/24/2012

DESIGNED OP
DRAWN OP
CHECKED DBM
DATE 1-20-12

REVISED -
REVISED -
REVISED -
REVISED -

STATE OF ILLINOIS
DEPARTMENT OF TRANSPORTATION

ROADWAY DETAILS

SCALE: NONE SHEET NO. 1 OF 26 SHEETS STA. TO STA.

| | | | | |
|---------------------|---------------------|---------------------------|--------------|-----------|
| F.A.I. RTE. | SECTION | COUNTY | TOTAL SHEETS | SHEET NO. |
| • | 82-1-RIA, 82-1-RIB) | ST. CLAIR | 629 | 498 |
| • 64/998/70 | | CONTRACT NO. 76C52 | | |
| FED. ROAD DIST. NO. | | ILLINOIS FED. AID PROJECT | | |