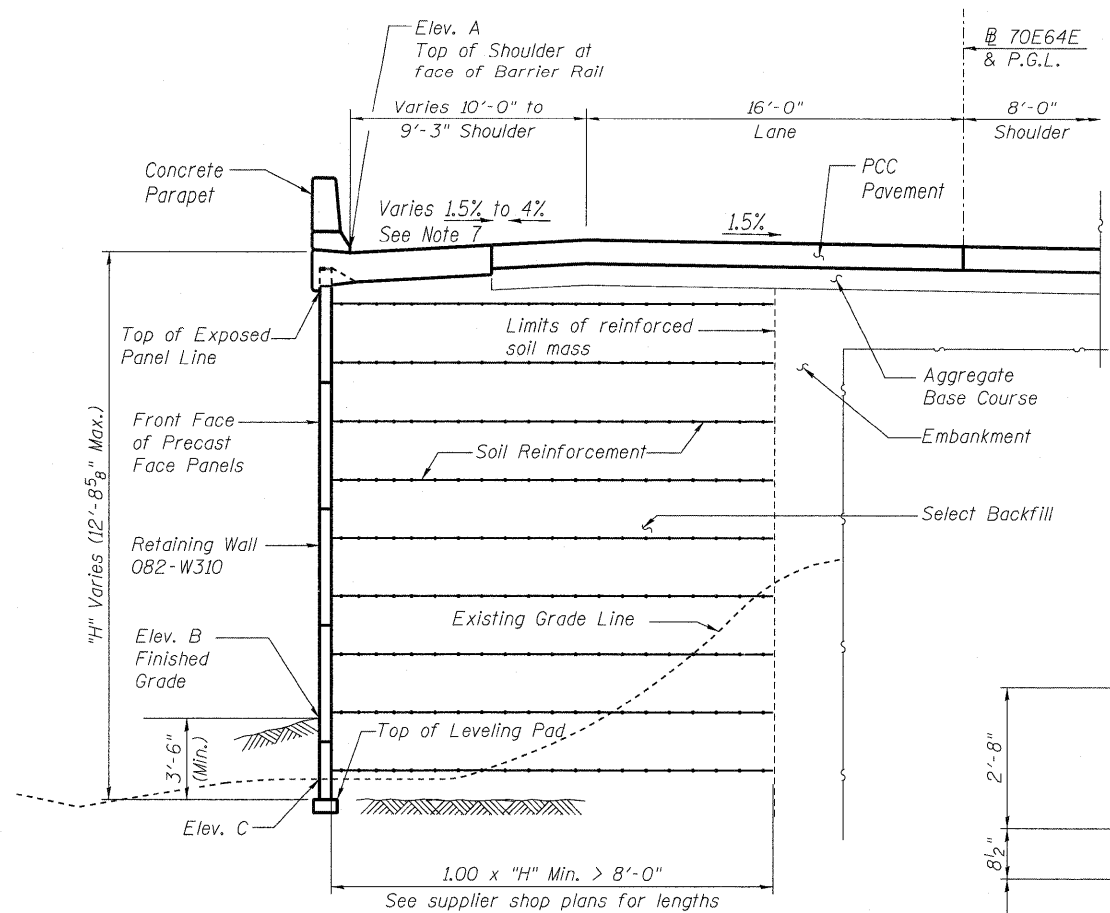
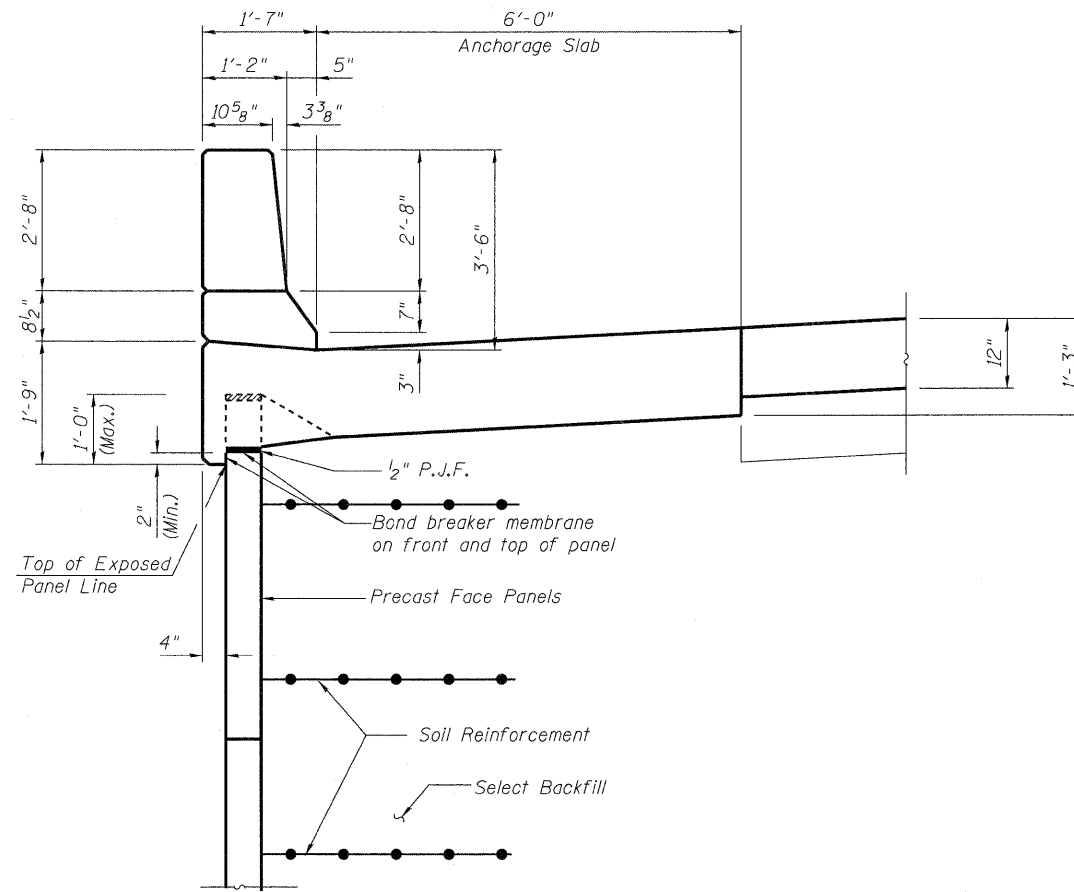


GENERAL NOTES:

1. Station and offsets are measured from the Baseline of 70E64E to the front face of MSE wall panels.
2. All construction joints shall be bonded.
3. See Special Provision for Mechanically Stabilized Earth Retaining Wall design and construction requirements.
4. Design and construction of MSE wall must coordinate with removal of Temporary Soil Retention System in Contract 76C76. Limits of Temporary Soil Retention System are from Sta. 65+20.20 to Sta. 65+56.23 of the 70E64E alignment.
5. Reinforcement bars designated (E) shall be epoxy coated.
6. Slip forming of the parapets is not allowed.
7. Cross slope of north shoulder and anchorage slab varies from 1.5% downward south at Sta. 65+23.00 to 4.0% downward north at Sta. 66+33.00. Anchorage slab remains constant 6'-0" width.
8. Anchorage slab and parapet concrete shall be paid for as Concrete Superstructure.



TYPICAL SECTION
N.T.S.
(Looking Upstation)



TYPICAL CROSS SECTION
N.T.S.

The M.S.E. wall supplier's internal stability design shall account for the anchorage slab's bearing pressure surcharge of 1.0 ksf and horizontal sliding force of 0.5 kips/ft. of wall.

TOTAL BILL OF MATERIAL

Pay Item	Unit	Total
Structure Excavation	Cu. Yd.	184
Concrete Superstructure	Cu. Yd.	74
Reinforcement Bars, Epoxy Coated	Pound	15,430
Protective Coat	Sq. Yd.	176
Mechanically Stabilized Earth Retaining Wall	Sq. Ft.	940
Name Plate	Each	1

TABLE 1

Station	Offset at Front Face of Wall	Elevation A (feet)	Elevation B (feet)	Elevation C (feet)
65+23.00	27'-3" Lt.	409.63	400.54	399.70
65+25.00	27'-3" Lt.	409.52	400.55	399.69
65+50.00	27'-3" Lt.	408.19	400.71	399.78
65+75.00	27'-3" Lt.	406.93	401.30	399.49
66+00.00	27'-3" Lt.	405.73	401.87	399.30
66+25.00	27'-3" Lt.	404.59	402.13	400.41
66+50.00	27'-3" Lt.	403.62	402.23	402.63
66+75.00	27'-3" Lt.	402.76	401.79	404.60

Elev. A -Top of Shoulder at inside face of Barrier Rail
Elev. B -Finished grade line at front face of Wall
Elev. C -Existing grade line at front face of Wall

STATION 65+23
BUILT BY
STATE OF ILLINOIS
F.A.I. RT. 64/998 SEC. 82-1-R(A)
LOADING HS-20
STRUCTURE NO. 082-W310

NAME PLATE S.N. 082-W310
See Std. 515001

FILE NAME = 082-W310.76C52.S02.BCM.dgn	USER NAME = searab	DESIGNED DEV	REVISED -	STATE OF ILLINOIS DEPARTMENT OF TRANSPORTATION	RETAINING WALL 082-W310 GENERAL NOTES & BILL OF MATERIAL	F.A.I. RTE.	SECTION	COUNTY	TOTAL SHEETS	SHEET NO.
		DRAWN GF	REVISED -			82-1-RIA, 82-1-R(B)	ST. CLAIR	629	494	
		CHECKED ATB	REVISED -			64/998/70	CONTRACT NO. 76C52			
		DATE JUNE 10, 2011	REVISED -			FED. ROAD DIST. NO.	ILLINOIS	FED. AID PROJECT		
PLOT SCALE = 0:2.00000 1' / 1"				SCALE: N.T.S.	SHEET NO. 5-2 OF 5-5 SHEETS	STA. 65+23.00 TO STA. 66+75.00				