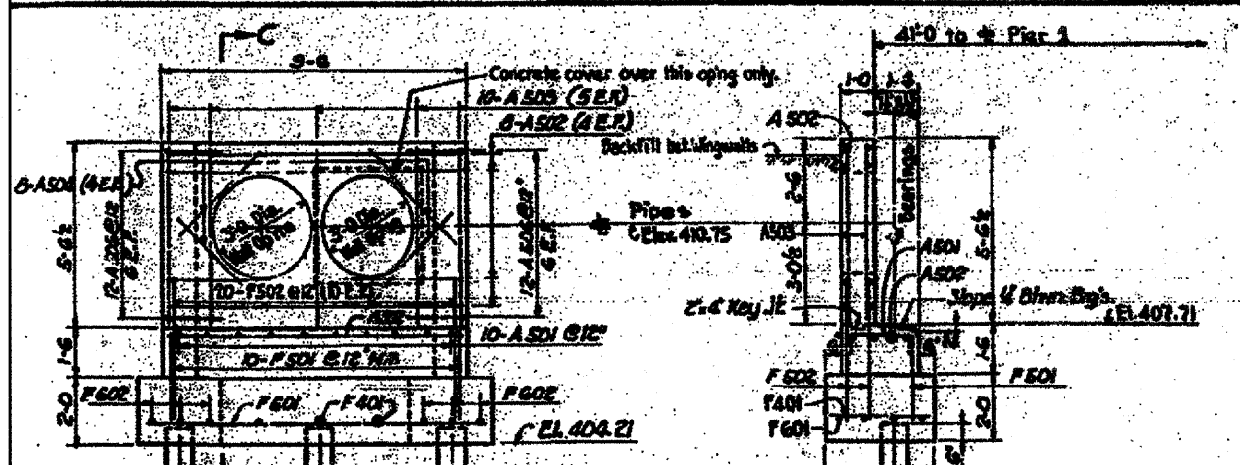
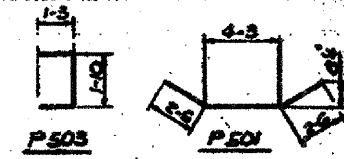


FED. ROAD DIST. NO.	SECTION	COUNTY	TOTAL SHEETS	SHEET NO.
F.A.I.-70	82-1(R)	ST. CLAIR	629	487B
FED. ROAD DIST. NO. 7 ILLINOIS PROJECT				

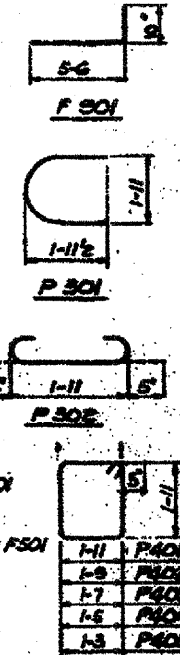
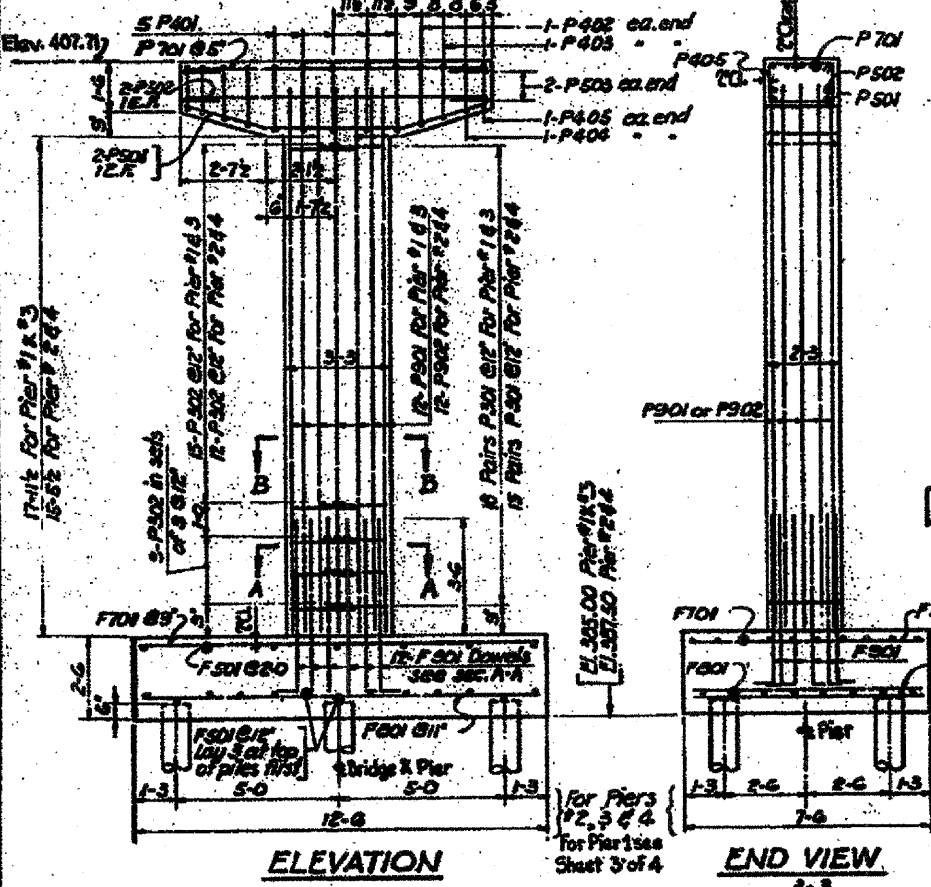
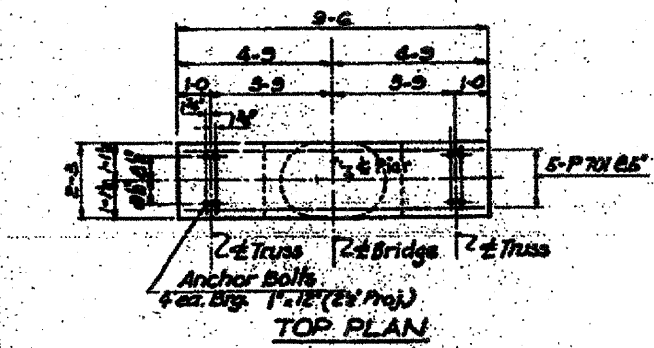
**FILE DATA**

Consolidated Files : 20 Tons  
 Capacity : 27 FT.  
 Estimated Length : 27 FT.  
 Files Required : 4 (for 4 piers)  
 Test Piles : 4



**PILE DATA**

Consolidated Files : 20 Tons  
 Capacity : 27 FT.  
 Estimated Length : 27 FT.  
 Files Required : 4  
 Test Pile : One

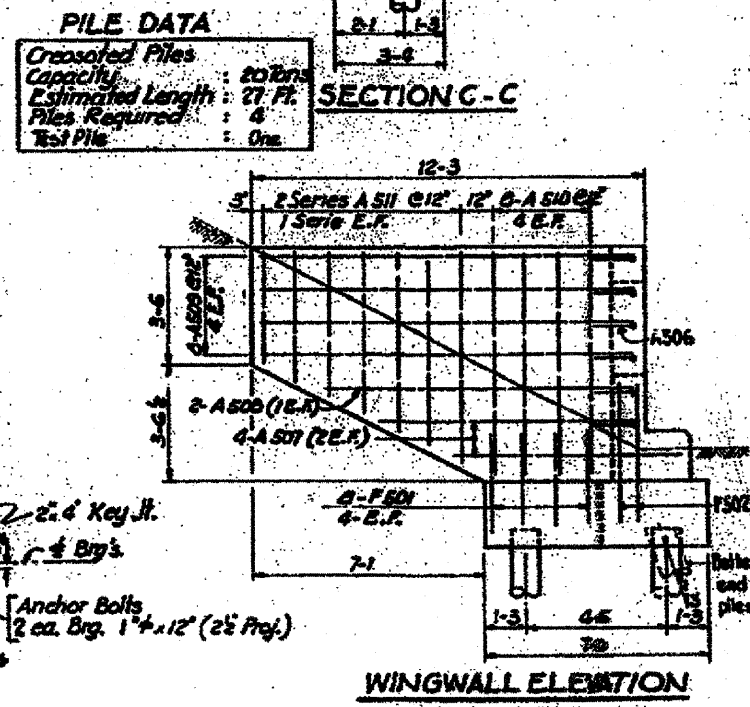
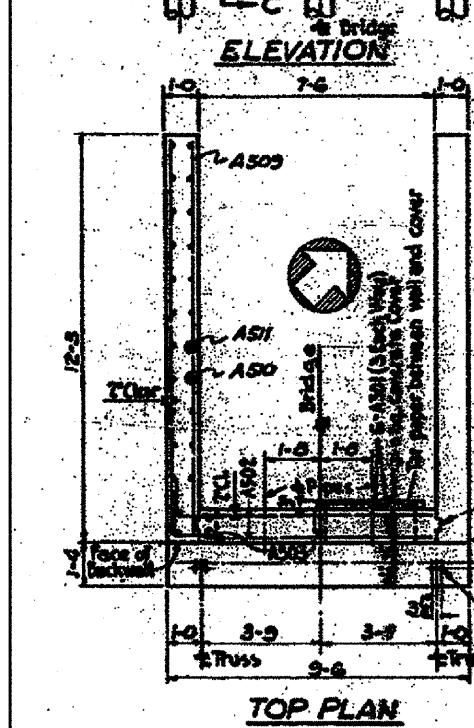


**BAR LIST**

Bar	No. Req'd. for Pier	Size	Length	Shape		
F501	20	20	7-0	—		
F701	10	10	17	12-0		
F503	14	—	—	15	6-6	
F504	8	—	—	15	5-7	
F1001	2	—	—	10	18-6	
F1002	2	—	—	10	10-2	
F1003	2	—	—	10	7-10	
F801	8	8	8	8	12-0	
F802	2	—	—	8	12-6	
F803	1	—	—	8	10-2	
F804	2	—	—	8	7-0	
F501	12	12	12	15	6-6	
P501	36	30	36	30	15	5-0
P502	24	21	24	21	15	2-9
P401	5	5	5	5	14	8-6
P402	2	2	2	2	14	8-2
P403	2	2	2	2	14	7-10
P404	2	2	2	2	14	7-6
P405	2	2	2	2	14	7-2
P501	2	2	2	2	15	9-3
P502	2	2	2	2	15	9-8
P503	4	4	4	4	15	4-4
P701	5	5	5	5	17	9-2
P901	12	—	—	—	15	15-9
P902	—	—	—	—	12	17-3

**BILL OF MATERIAL**

Class X Concrete	Pier No. 1	Pier No. 2	Pier No. 3	Pier No. 4	Total
Class X Concrete	12.75	12.8	13.6	14.3	53.4
Reinforcement Bars	1940	1910	2120	2110	7980
Consolidated Files (in ft.)	109	135	135	135	594
Test Piles (in ft.)	1	1	1	1	4
Consolidated Files for Structures	60	53	70	53	236

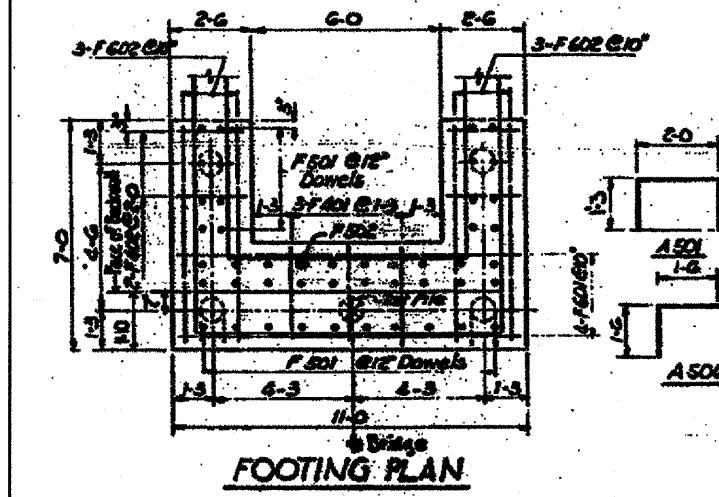
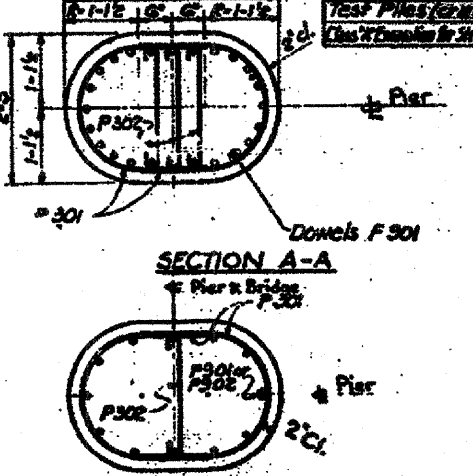
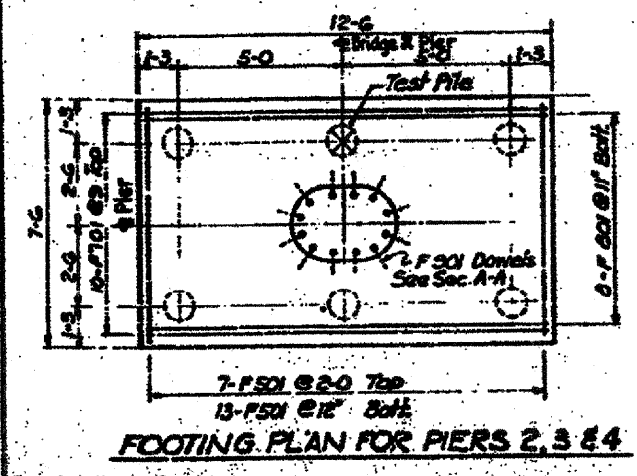


**BAR LIST**

Bar	No. Req'd.	Size	Length	Shape
F401	3	16	3-0	—
F402	4	16	2-2	—
F801	26	16	8-10	—
F802	20	15	8-4	—
F803	4	16	10-8	—
F804	6	16	6-0	—
A501	6	15	3-3	—
A502	10	15	4-6	—
A503	12	—	3-2	—
A504	12	—	3-6	—
A505	8	—	3-6	—
A506	24	—	3-0	—
A507	8	—	7-6	—
A508	4	—	10-0	—
A509	16	—	11-11	—
A510	16	—	7-10	—
A511	4 Series 1 Bars	15	from 3-3 to 12-0	—

**BILL OF MATERIAL**

Class X Concrete	Qty	Class
Class X Concrete	12.75	17
Reinforcement Bars	1940	120
Consolidated Files (in ft.)	109	39
Test Piles (in ft.)	1	1
Consolidated Files for Structures	60	3



**NORTH ABUTMENT**  
 Scale: 3/8" = 1'-0"

**PIERS**  
 Scale: 1/4" = 1'-0" unless noted

STATE OF ILLINOIS  
 DEPARTMENT OF PUBLIC WORKS & BLDGS.  
 DIVISION OF HIGHWAYS  
 &  
 EAST ST. LOUIS & INTERURBAN WATER CO.  
**EAST ST. LOUIS EXPRESSWAY**  
 BRIDGE FOR 2 30" WATER PIPES  
 OVER I-55-70  
 NORTH ABUTMENT AND PIERS No. 1, 2, 3 & 4  
 N. W. LOCHNER, INC.  
 ENGINEER  
 DATE: JULY 1960 CHICAGO ILLINOIS SHEET NO. 26