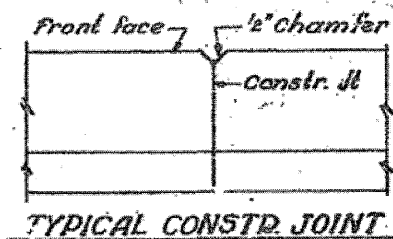
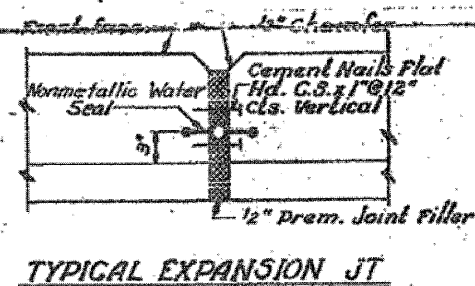


FEDERAL AID ROUTE NO.	SECTION	COUNTY	TOTAL SHEETS	SHEET NO.
FAI-70	64-1-2	St. Clair	144	73
FED. ROAD DIST. NO. 4 ILLINOIS PROJECT				

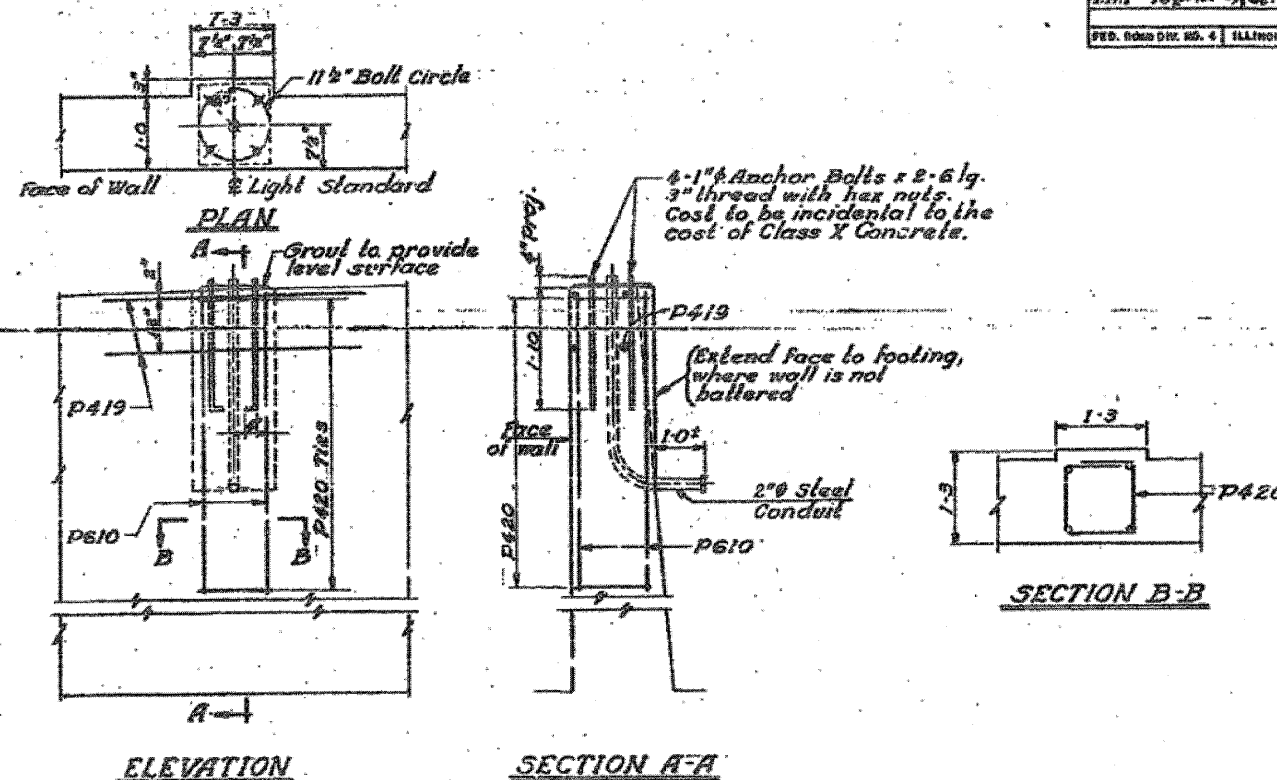


NOTE:
6" of gravel or crushed stone encasement around 8" drain pipe shall be considered incidental to the cost of 8" perforated corrugated metal pipe

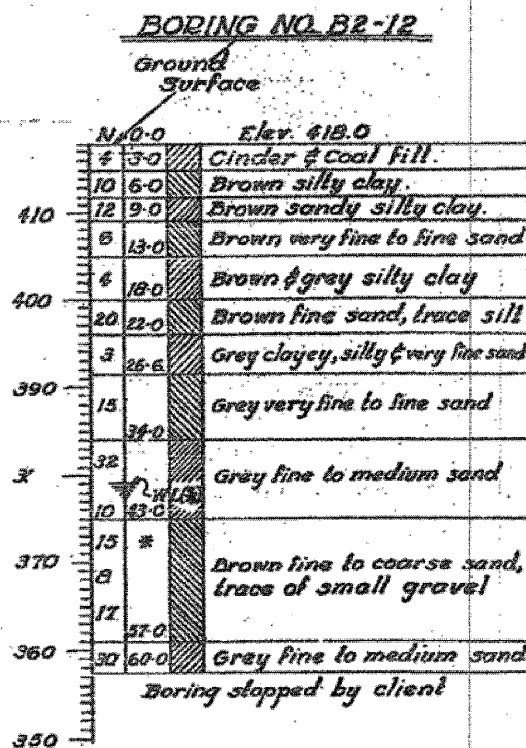


8" corr. metal pipe perforated encased in 6" of gravel or crushed stone

TYPICAL DRAINAGE DETAIL
For Drainage Layout see General Plan



LIGHT STANDARD BASE DETAIL



NOTE:
Classifications are made by visual inspection. Water level (W.L.) figure indicates time of reading (hours) after completion of boring. Porosity of the soil strata, variations of rainfall, site topography, etc., may cause changes in these levels. N indicates number of blows required to drive 20D sampling pipe one foot, using 140 lb. weight falling 50 inches. For location of boring see Sh. No. 1. * Indicates water loss in strata.

Drawn by: M.V.D.
Checked by:

STATE OF ILLINOIS
DEPARTMENT OF PUBLIC WORKS & BLDGS.
DIVISION OF HIGHWAYS
CITY OF EAST ST. LOUIS
EAST ST. LOUIS EXPRESSWAY
RETAINING WALL "P"
DETAILS & BORING DATA

H. W. LOCHNER, INC.
ENGINEERS
DATE: FEBRUARY 1968 CHICAGO, ILLINOIS SHEET NO. 4

FILE NAME: DBTRI-76C52-SHT-Wall-P_03.dgn	USER NAME: searab	DESIGNED: -	REVISED: -	STATE OF ILLINOIS DEPARTMENT OF TRANSPORTATION	EXISTING BRIDGE PLAN - WALL-P 03	F.A.I. RTE.	SECTION	COUNTY	TOTAL SHEETS	SHEET NO.
PLOT SCALE: = 2,0000 1/ in.	CHECKED: - DD	REVISOR: -	REVISOR: -			• 82-1-R(A), 82-1-R(B)	ST. CLAIR	629	476	
PLOT DATE: = 1/23/2012	DATE: - 07/21/10	REVISOR: -	REVISOR: -			• 64/998/70	CONTRACT NO. 76C52			
						SCALE: NONE	SHEET NO. 4 OF 5 SHEETS	STA. TO STA.	FED. ROAD DIST. NO. ILLINOIS FED. AID PROJECT	