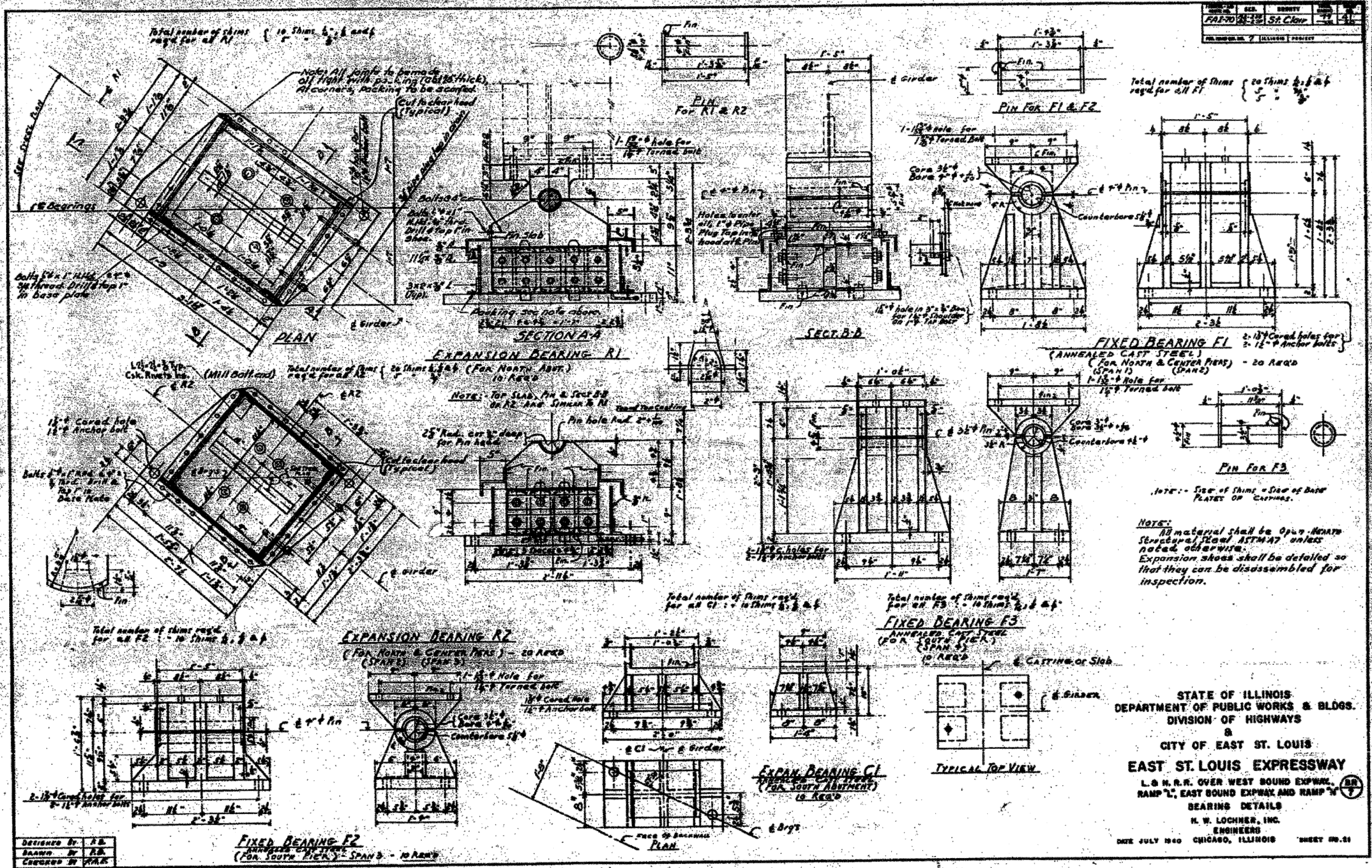


PROJECT NO.	SECTION	COUNTY	TOTAL SHEETS	SHEET NO.
FAI-70	82-1-R	St. Clair	26	23
ILLINOIS PROJECT				



STATE OF ILLINOIS
 DEPARTMENT OF PUBLIC WORKS & BLDGS.
 DIVISION OF HIGHWAYS
 &
 CITY OF EAST ST. LOUIS
EAST ST. LOUIS EXPRESSWAY
 L & N.R.R. OVER WEST BOUND EXPWAY,
 RAMP "L", EAST BOUND EXPWAY AND RAMP "Y"
 BEARINGS DETAILS
 H. W. LOCHNER, INC.
 ENGINEERS
 DATE JULY 1940 CHICAGO, ILLINOIS SHEET NO. 23

FILE NAME : DBTRI-76C52-SHT-LNRRB-ridge.22.dgn	USER NAME : saarob	DESIGNED : GF	REVISED : -	STATE OF ILLINOIS DEPARTMENT OF TRANSPORTATION	EXISTING BRIDGE PLAN - L&N RR BRIDGE 22	F.A.I. RTE.	SECTION	COUNTY	TOTAL SHEETS	SHEET NO.			
	PLOT SCALE = 2.0000' / 1"	CHECKED : DD	REVISED : -			SCALE: NONE	SHEET NO. 23 OF 26 SHEETS	STA.	TO STA.	82-1-RIA, 82-1-RIB)	ST. CLAIR	629	469
	PLOT DATE = 1/23/2012	DATE : 07/21/10	REVISED : -							64/998/70	CONTRACT NO. 76C52		
										FED. ROAD DIST. NO.	ILLINOIS FED. AID PROJECT		