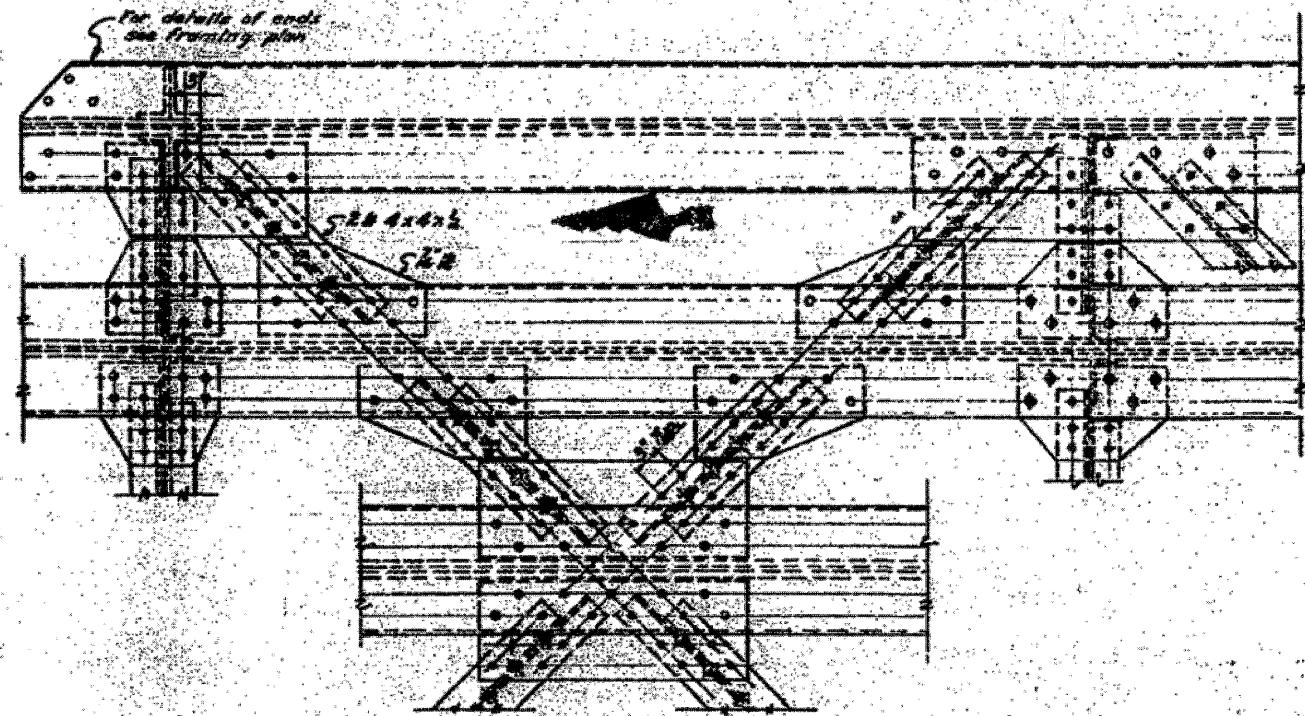
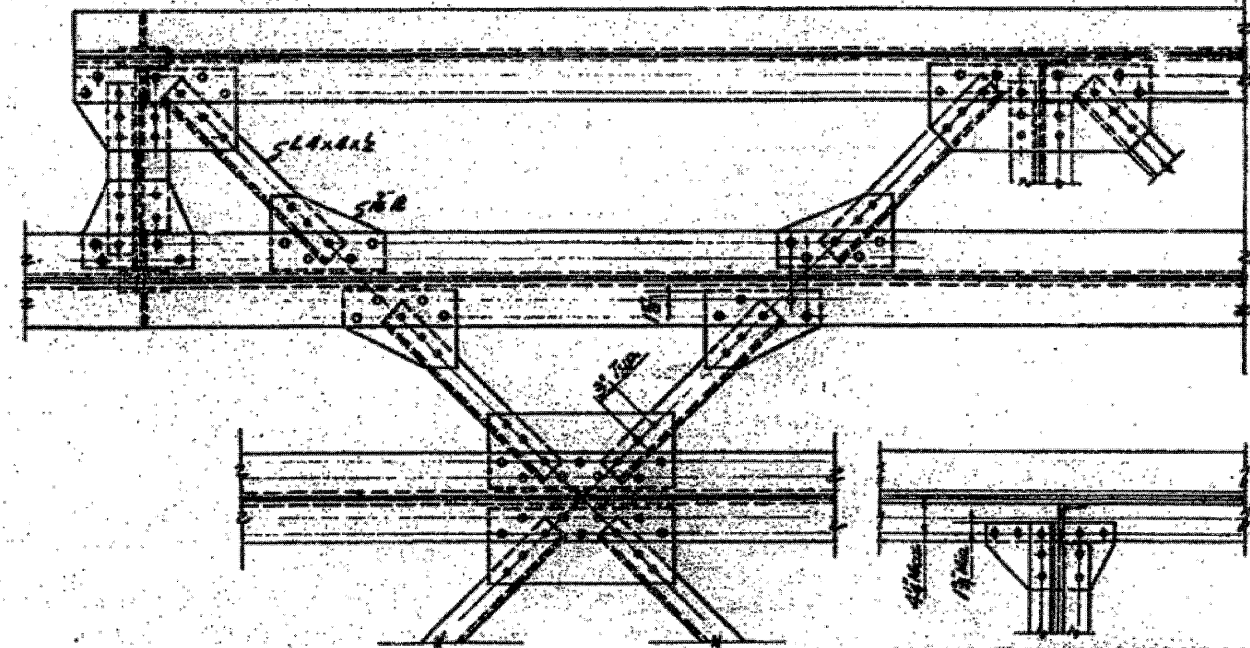


PROJECT NO.	SECTION	COUNTY	TOTAL SHEETS	SHEET NO.
FAZ-10653	82-1	St. Clair	629	468
FED. ROAD DIST. NO. ILLINOIS FED. AID PROJECT				

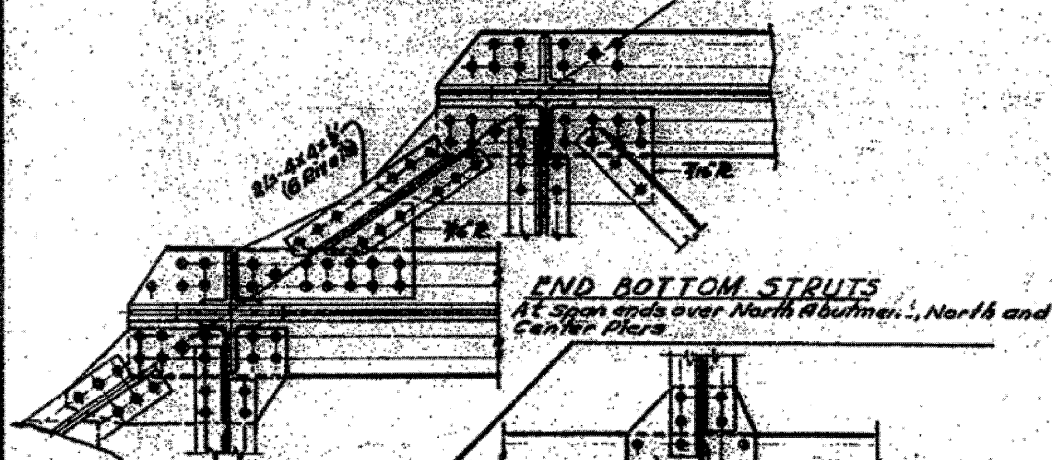


TOP LATERAL BRACING SPAN 1, 2 & 3

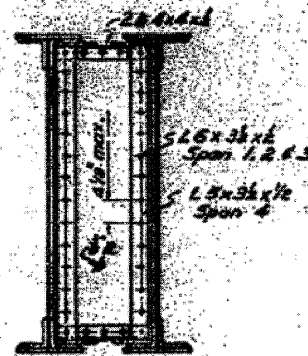


TOP LATERAL BRACING SPAN 4

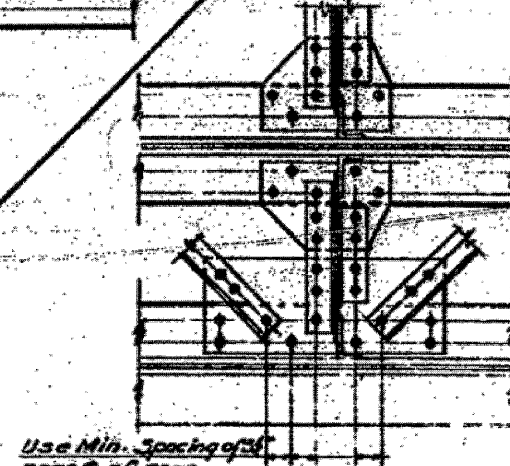
CONNECTION OF DIAPHRAGM TO BOTTOM FLANGE FOR SPAN 4



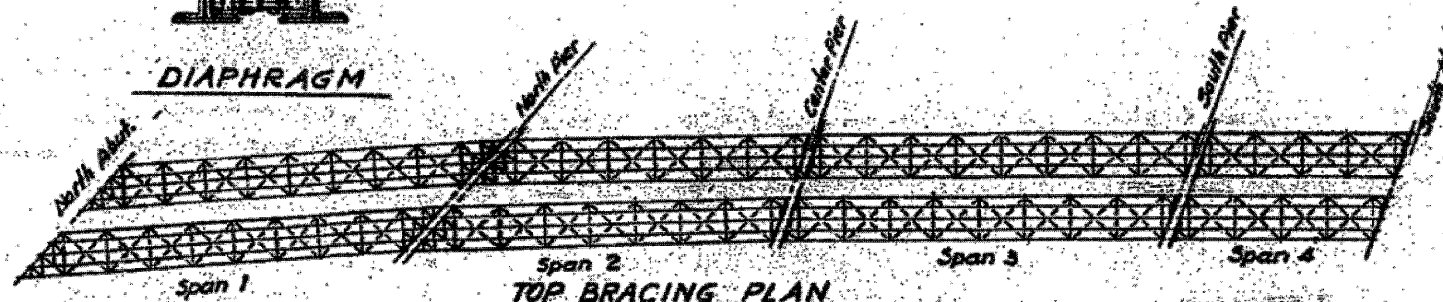
END BOTTOM STRUTS At span ends over North Abutment, North and Center Piers



DIAPHRAGM



BOTTOM LATERAL BRACING SPAN 1, 2 & 3



TOP BRACING PLAN



BOTTOM BRACING PLAN

NOTES
Edge distance not more than 2" or less than 1 1/2"
Laterals shall have one rivet pass through lateral and flange.

STATE OF ILLINOIS
DEPARTMENT OF PUBLIC WORKS & BLDGS.
DIVISION OF HIGHWAYS

CITY OF EAST ST. LOUIS
EAST ST. LOUIS EXPRESSWAY

L. & N. R.R. OVER WEST BOUND EXPWAY, RAMP "L" EAST BOUND EXPWAY AND RAMP "Y"
LATERAL DETAILS

H. W. LOCHNER, INC.
ENGINEERS

DATE JULY 1960 CHICAGO, ILLINOIS SHEET 66-80

Designed by
Drawn by
Checked by

FILE NAME - D9TR1-76C52-SHT-LNRRB-ridge-21.dgn

USER NAME = searsb

PLOT SCALE = 2,0000 1/4 in.

PLOT DATE = 1/23/2012

DESIGNED -

DRAWN - CF

CHECKED - DD

DATE - 07/21/10

REVISED -

REVISED -

REVISED -

REVISED -

STATE OF ILLINOIS
DEPARTMENT OF TRANSPORTATION

EXISTING BRIDGE PLAN - L&N RR BRIDGE 21

SCALE: NONE SHEET NO. 22 OF 26 SHEETS STA. TO STA.

F.A.I. RTE.	SECTION	COUNTY	TOTAL SHEETS	SHEET NO.
64/998/70	82-1-(R/A), 82-1-(R/B)	ST. CLAIR	629	468
FED. ROAD DIST. NO. ILLINOIS FED. AID PROJECT			CONTRACT NO. 76C52	