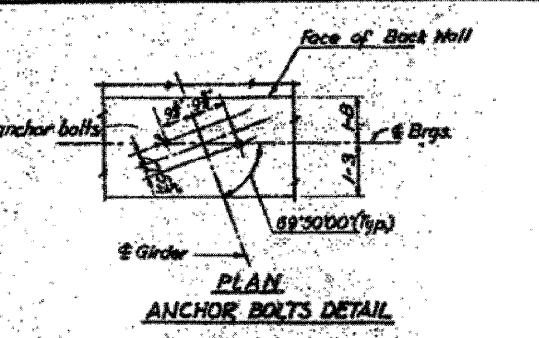
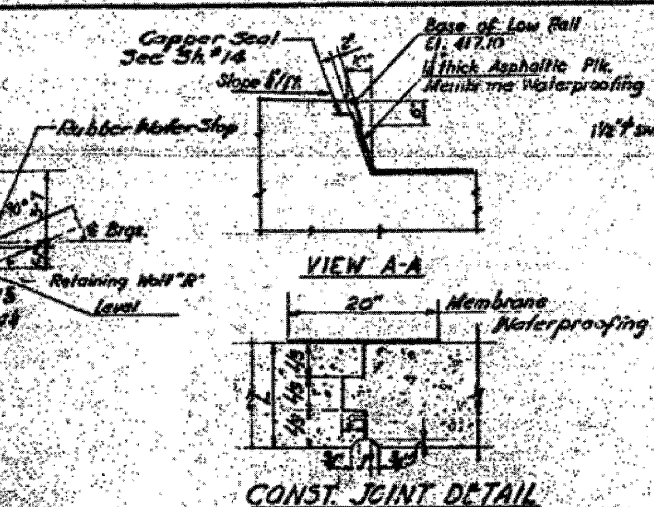
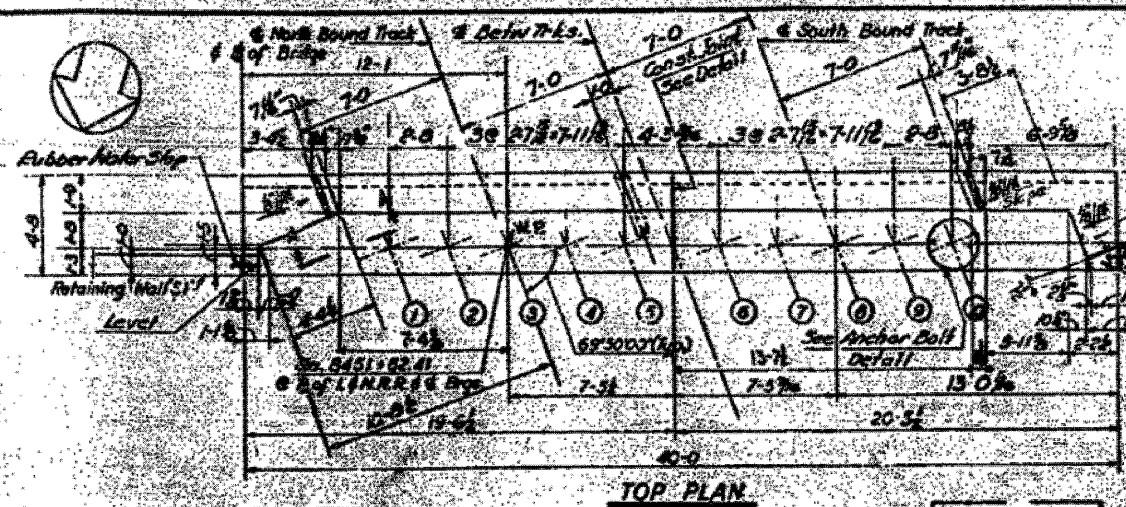
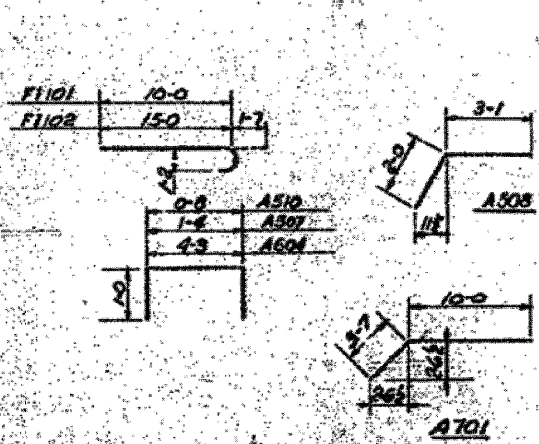
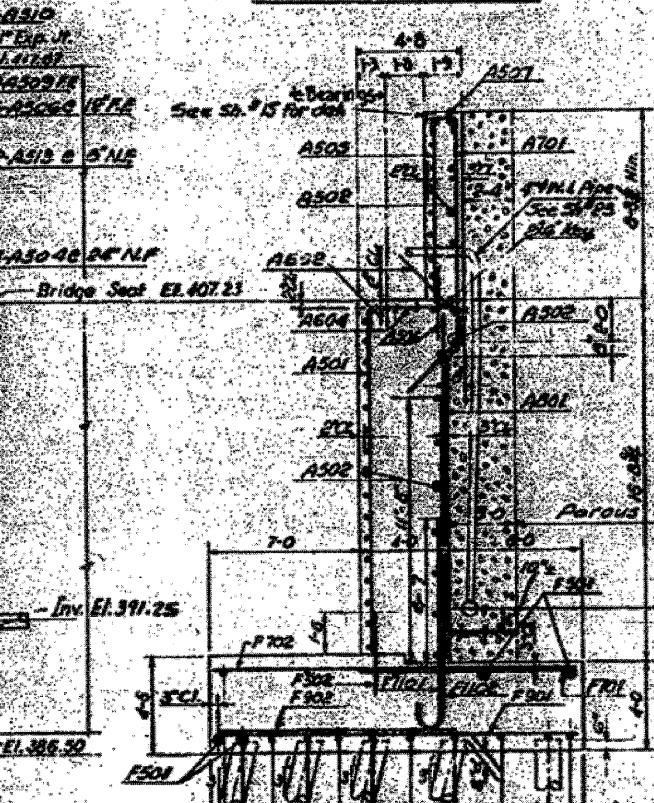
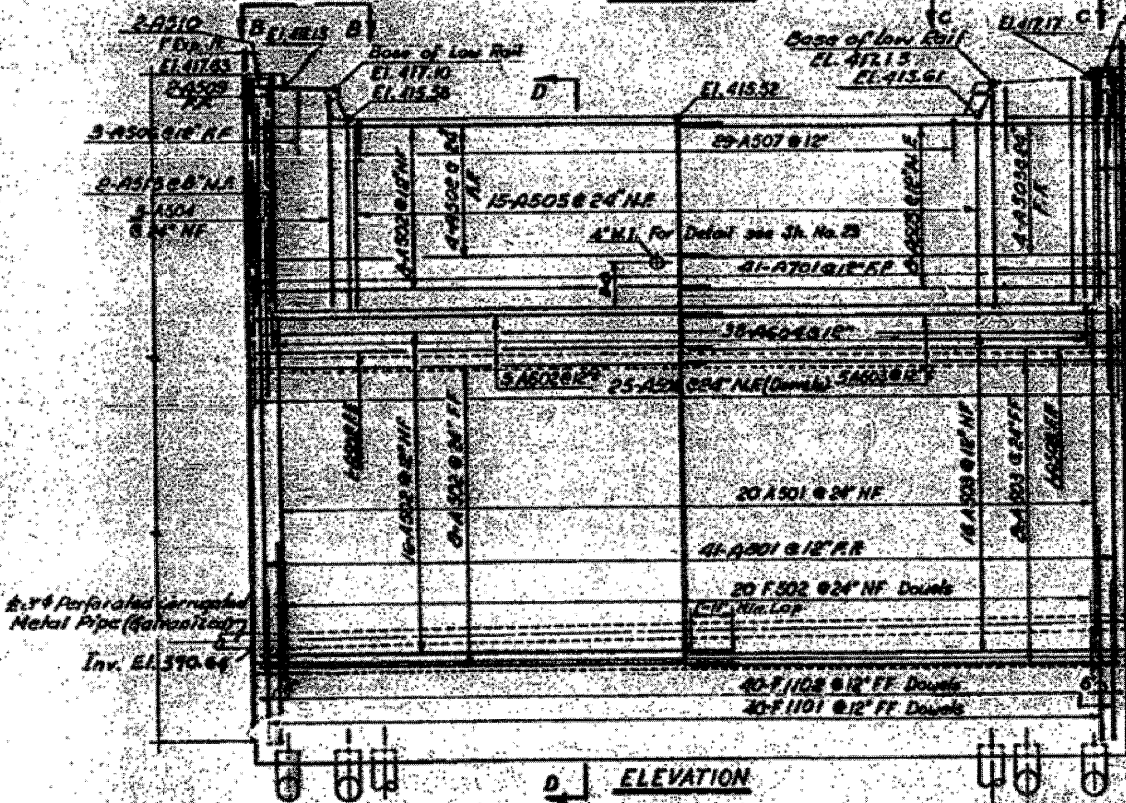


PROJECT NO.	SEC.	COUNTY	SHEET NO.
FAI-706527	7	St. Clair	36
DATE: JULY 1960			



BAR SCHEDULE				
Mark	No. Req'd	Size	Length	Shape
F501	16	5	39-6	—
F502	20	5	3-0	—
F701	24	7	9-0	—
F901	40	9	16-6	—
F902	39	9	11-0	—
F101	40	11	11-7	—
F102	40	11	16-7	—
F702	24	7	16-6	—
A501	20	5	16-0	—
A502	37	5	21-8	—
A503	37	5	20-2	—
A504	6	5	9-6	—
A505	15	5	8-1	—
A506	35	5	8-0	—
A507	35	5	3-4	—
A508	5	5	5-1	—
A509	8	5	1-0	—
A510	4	5	2-8	—
A511	3	5	4-3	—
A512	2	5	2-8	—
A513	4	5	10-2	—
A514	2	5	5-0	—
A605	5	6	2-7	—
A603	5	6	20-2	—
A604	38	6	6-3	—
A701	41	7	15-7	—
A801	41	8	16-6	—

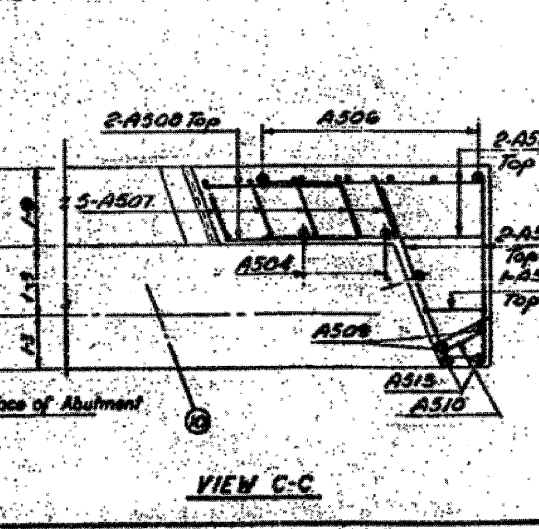
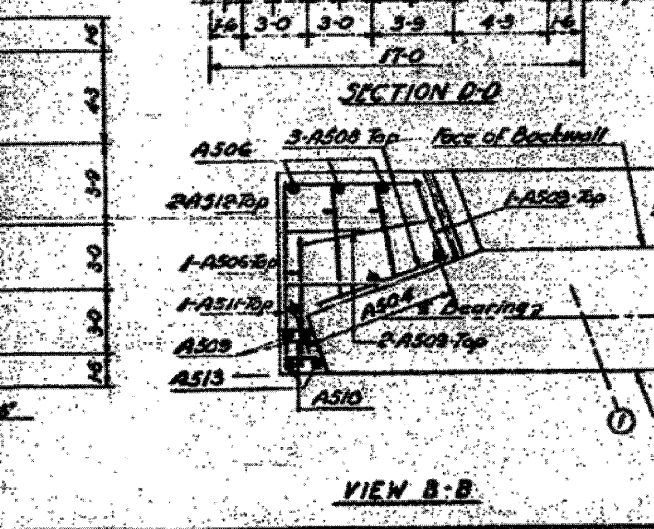
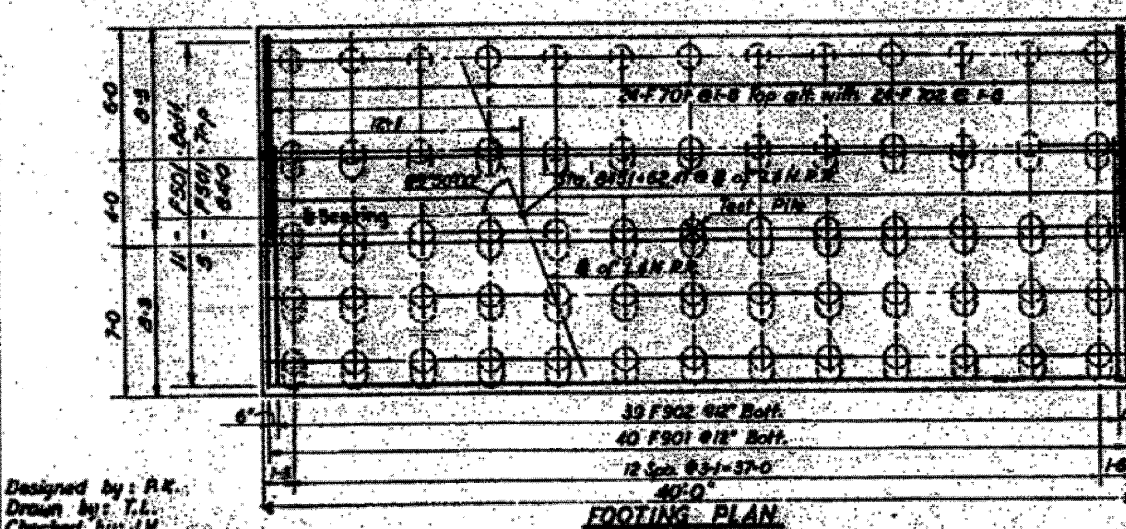


BILL OF MATERIAL		
Class "X" Concrete	C.Y.	234
Reinforced Bars	Lbs.	17,780
Furnishing Concrete Piles	Ln. Ft.	2,450
Driving Concrete Piles	Ln. Ft.	2,450
Test Pile (Concrete)	Each	1
Porous Granular Embankment	CY	104
Membrane Waterproofing	S.F.	48
6" C.M.P. Perforated (Galv.)	L.F.	40

Incidental to cost of Class X Concrete

PILE DATA	
Type	Concrete
Length	35 Ft.
Capacity	40 Ton
No. Required	64 Piles
Test Pile	1 Pile

Notes:
 For pile details see Sh. #24.
 Care shall be taken in placing reinforcement bars so as to clear anchor bolts.
 For General Notes see Sh. #1.
 For location see Sh. #2.
 See Sh. #7 for Expansion Joint Details at ends of abutments.



STATE OF ILLINOIS
 DEPARTMENT OF PUBLIC WORKS & BLDGS.
 DIVISION OF HIGHWAYS
 &
 CITY OF EAST ST. LOUIS
EAST ST. LOUIS EXPRESSWAY
 L. & N. R. OVER WEST SOUND EXPWAY.
 RAMP "L", EAST SOUND EXPWAY AND RAMP "N"
 SOUTH ABUTMENT
 H. W. LOCHNER, INC.
 ENGINEERS
 DATE JULY 1960 CHICAGO, ILLINOIS SHEET NO. 36

Designed by: P.K.
 Drawn by: T.L.
 Checked by: J.M.

FILE NAME: DBTRI-76C52-SHT-LNRRB-1.dwg
 USER NAME: sear-sb
 PLOT SCALE: 2.0000 / in.
 PLOT DATE: 1/23/2012

DESIGNED -	REVISED -
DRAWN - GF	REVISED -
CHECKED - DD	REVISED -
DATE - 07/21/10	REVISED -

STATE OF ILLINOIS
 DEPARTMENT OF TRANSPORTATION

EXISTING BRIDGE PLAN - L&N RR BRIDGE 06

SCALE: NONE SHEET NO. 7 OF 26 SHEETS STA. TO STA.

F.A.I. RTE.	SECTION	COUNTY	TOTAL SHEETS	SHEET NO.
	82-1-R(A), 82-1-R(B)	ST. CLAIR	629	453
64/998/70		CONTRACT NO. 76C52		
FED. ROAD DIST. NO.		ILLINOIS FED. AID PROJECT		