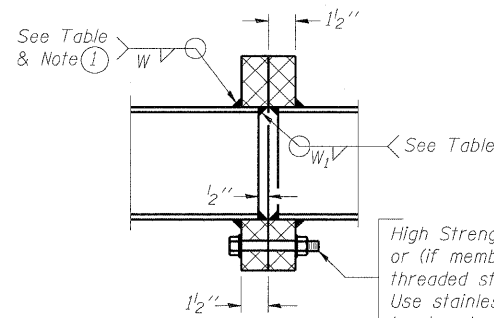


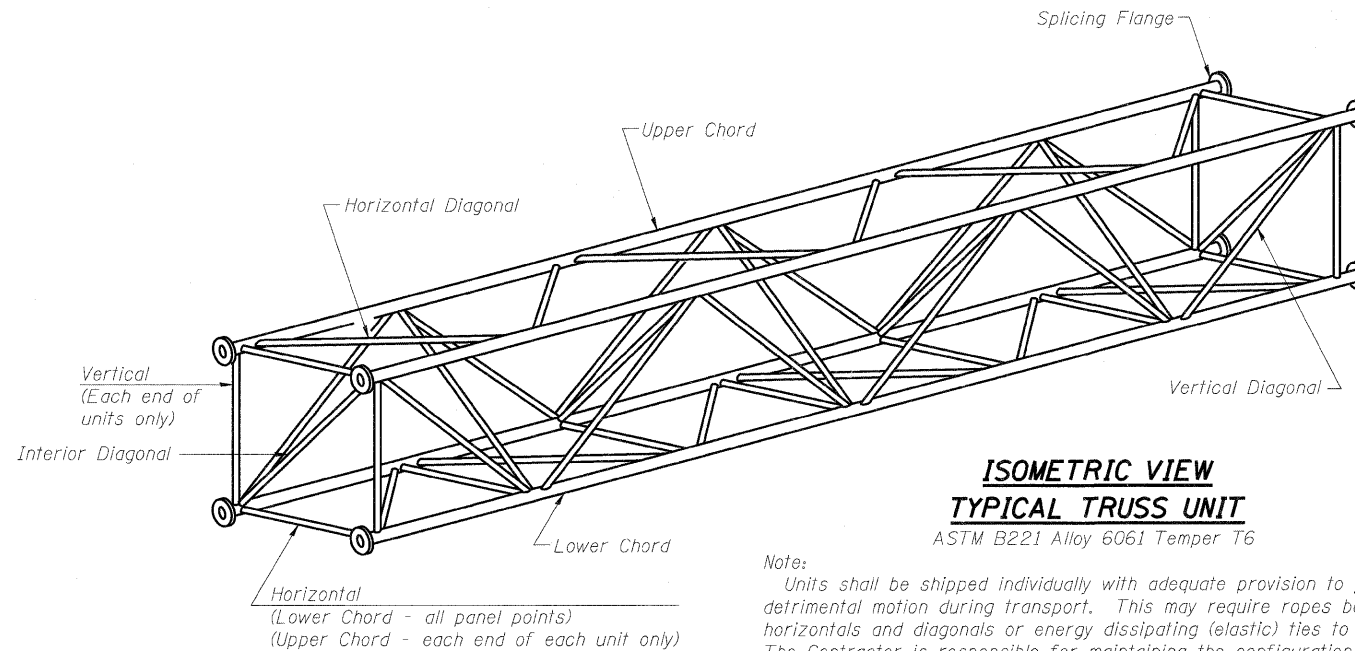
TRUSS UNIT TABLE

Structure Number	Station	Design Truss Type	Exterior Units (2)			Interior Unit				Upper & Lower Chord		Verticals; Horizontals; Vertical, Horizontal, and Interior Diagonals		Camber at Midspan	Splicing Flange					
			No. Panels per Unit	Unit Lgth.(L _u)	Panel Lgth.(P)	No. Req'd.	No. Panels per Unit	Unit Lgth.(L _i)	Panel Lgth.(P)	O.D.	Wall	O.D.	Wall		Bolts		Weld Sizes		A	B
															No./Splice	Dia.	W	W ₁		
8S0821055R003.1	88+00.00	III-A	7	39'-2 1/2"	5'-4"	0	-	-	7"	5/16"	3 1/4"	5/16"	1.0"	6	1"	7/16"	5/16"	11 1/2"	15"	
8S0821055L003.2	68+75.00	III-A	7	36'-3 1/2"	4'-11"	0	-	-	7"	5/16"	3 1/4"	5/16"	1.0"	6	1"	7/16"	5/16"	11 1/2"	15"	
8S0821055L003.0	78+19.81	II-A	7	36'-3 1/2"	4'-11"	0	-	-	5 1/2"	5/16"	3"	5/16"	1.5"	6	7/8"	3/8"	1/4"	9 1/4"	12 1/4"	
8S0821064L003.0	110+12.00	III-A	7	38'-5 3/4"	5'-2 3/4"	1	6	32'-7 1/2"	5'-2 3/4"	7"	1/2"	3 1/4"	5/16"	8	1"	9/16"	7/16"	11 1/2"	15"	

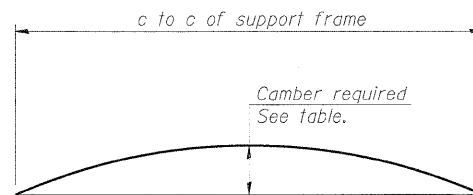


SECTION B-B

① Splicing Flanges shall be attached to each truss unit with the truss shop assembled to camber shown. Truss units shall be in proper alignment and flange surfaces shall be shop bolted into full contact before welding. Sufficient external welds or tacks shall be made to secure flanges until remaining welds are made after disassembly. Adjacent flanges shall be "match marked" to insure proper field assembly.



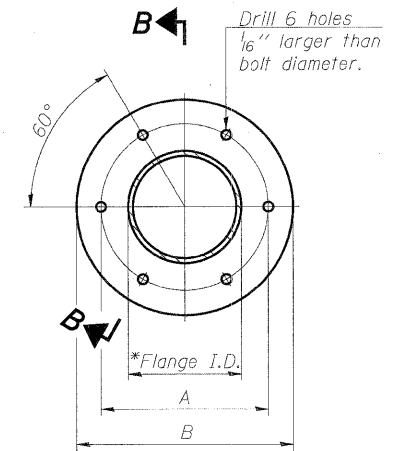
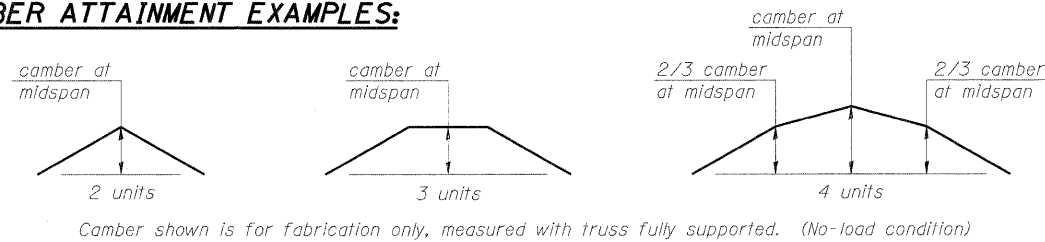
ISOMETRIC VIEW TYPICAL TRUSS UNIT
ASTM B221 Alloy 6061 Temper T6



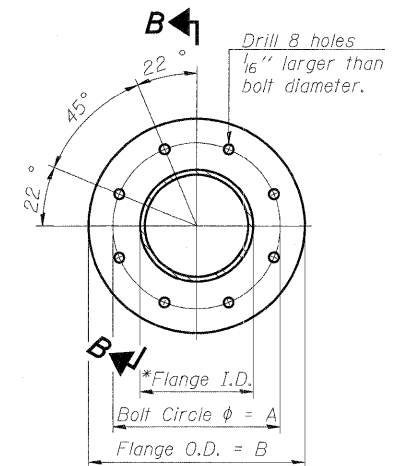
CAMBER DIAGRAM

Camber curve shown is theoretical. Actual camber attained by slope changes at splices between units.

CAMBER ATTAINMENT EXAMPLES:



TRUSS TYPES I-A, II-A, & III-A



TRUSS TYPES II-A & III-A

SPLICING FLANGES

ASTM B221, Alloy 6061-T6 or ASTM B209, Alloy 6061-T651

*To fit O.D. of Chord with maximum gap of 1/16".

054-A-2

7-1-10

FILE NAME =	USER NAME =	DESIGNED - PMK	REVISED -	STATE OF ILLINOIS DEPARTMENT OF TRANSPORTATION	OVERHEAD SIGN STRUCTURES - ALUMINUM TRUSS DETAILS FOR TRUSS TYPES I-A, II-A AND III-A	F.A.I. RTE.	SECTION	COUNTY	TOTAL SHEETS	SHEET NO.
		CHECKED - MPW	REVISED -			82-1-R(A), 82-1-R(B)	ST. CLAIR	629	399	
PLOT SCALE =		DRAWN - PMK	REVISED -			*64/998/70	CONTRACT NO. 76C52			
PLOT DATE =		CHECKED - MPW	REVISED -			ILLINOIS FED. AID PROJECT				

SHEET NO. 3 OF 17 SHEETS