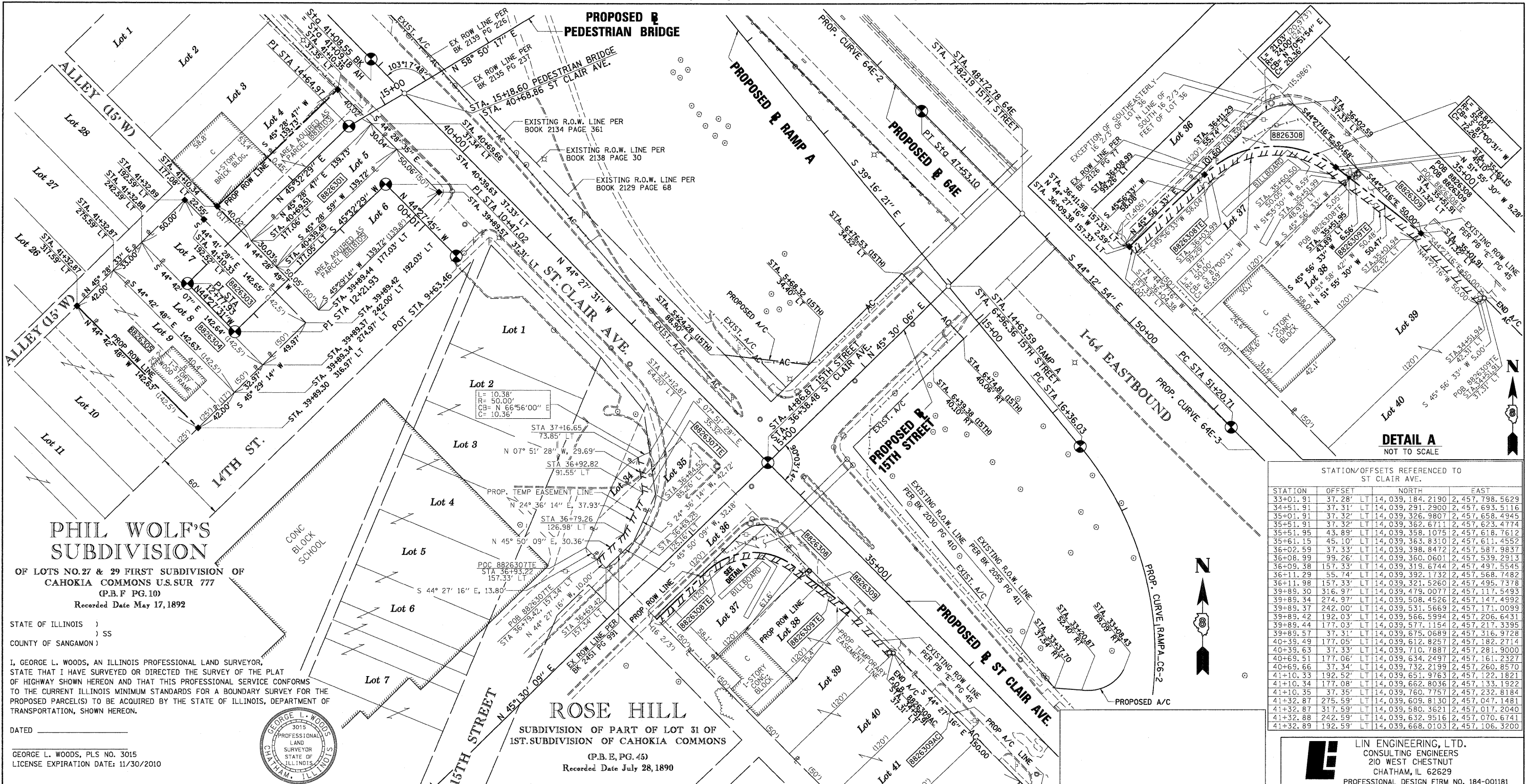


PART OF THE NW 1/4 OF SECTION 18, T2N, R9W OF THE 3RD PM, ST. CLAIR COUNTY, ILLINOIS



PHIL WOLF'S SUBDIVISION
 OF LOTS NO. 27 & 29 FIRST SUBDIVISION OF CAHOKIA COMMONS U.S. SUR 777 (P.B.F. PG. 10)
 Recorded Date May 17, 1892

STATE OF ILLINOIS)
) SS
 COUNTY OF SANGAMON)

I, GEORGE L. WOODS, AN ILLINOIS PROFESSIONAL LAND SURVEYOR, STATE THAT I HAVE SURVEYED OR DIRECTED THE SURVEY OF THE PLAT OF HIGHWAY SHOWN HEREON AND THAT THIS PROFESSIONAL SERVICE CONFORMS TO THE CURRENT ILLINOIS MINIMUM STANDARDS FOR A BOUNDARY SURVEY FOR THE PROPOSED PARCEL(S) TO BE ACQUIRED BY THE STATE OF ILLINOIS, DEPARTMENT OF TRANSPORTATION, SHOWN HEREON.

DATED _____
 GEORGE L. WOODS, PLS NO. 3015
 LICENSE EXPIRATION DATE: 11/30/2010



ROSE HILL
 SUBDIVISION OF PART OF LOT 31 OF 1ST. SUBDIVISION OF CAHOKIA COMMONS (P.B. E, PG. 45)
 Recorded Date July 28, 1890

STATION/OFFSETS REFERENCED TO ST. CLAIR AVE.

STATION	OFFSET	LT	NORTH	EAST
33+01.91	37.28'	LT	14, 039, 184.2190	2, 457, 798.5629
34+51.91	37.31'	LT	14, 039, 291.2900	2, 457, 693.5116
35+01.91	37.32'	LT	14, 039, 326.9807	2, 457, 658.4945
35+51.91	37.32'	LT	14, 039, 362.6711	2, 457, 623.4774
35+51.95	43.89'	LT	14, 039, 358.1075	2, 457, 618.7612
35+61.15	45.10'	LT	14, 039, 363.8310	2, 457, 611.4552
36+02.59	37.33'	LT	14, 039, 398.8472	2, 457, 587.9837
36+08.99	99.26'	LT	14, 039, 360.0601	2, 457, 539.2913
36+09.38	157.33'	LT	14, 039, 319.6744	2, 457, 497.5545
36+11.29	55.74'	LT	14, 039, 392.1732	2, 457, 568.7482
36+11.98	157.33'	LT	14, 039, 321.5260	2, 457, 495.7378
39+89.30	316.97'	LT	14, 039, 479.0077	2, 457, 117.5493
39+89.34	274.97'	LT	14, 039, 508.4526	2, 457, 147.4992
39+89.37	242.00'	LT	14, 039, 531.5669	2, 457, 171.0095
39+89.42	192.03'	LT	14, 039, 566.5994	2, 457, 206.6431
39+89.44	177.03'	LT	14, 039, 577.1154	2, 457, 217.3395
39+89.57	37.31'	LT	14, 039, 675.0689	2, 457, 316.9728
40+39.49	177.05'	LT	14, 039, 612.8257	2, 457, 182.2114
40+39.63	37.33'	LT	14, 039, 710.7887	2, 457, 281.9000
40+69.51	177.06'	LT	14, 039, 634.2497	2, 457, 161.2327
40+69.66	37.34'	LT	14, 039, 732.2199	2, 457, 260.8570
41+10.33	192.52'	LT	14, 039, 651.9763	2, 457, 122.1821
41+10.34	177.08'	LT	14, 039, 662.8036	2, 457, 133.1922
41+10.35	37.35'	LT	14, 039, 760.7757	2, 457, 232.8184
41+32.87	275.59'	LT	14, 039, 609.8130	2, 457, 047.1481
41+32.87	317.59'	LT	14, 039, 580.3621	2, 457, 017.2040
41+32.88	242.59'	LT	14, 039, 632.9516	2, 457, 070.6741
41+32.89	192.59'	LT	14, 039, 668.0103	2, 457, 106.3200

LIN ENGINEERING, LTD.
 CONSULTING ENGINEERS
 210 WEST CHESTNUT
 CHATHAM, IL 62629
 PROFESSIONAL DESIGN FIRM NO. 184-001181
 PHONE: (217)-483-4168 FAX: (217)-483-4706

ILLINOIS DEPARTMENT OF TRANSPORTATION
PLAT OF HIGHWAYS
 FAP ROUTE 998
 SECTION 82-1-HBR & 82-1-2HB
 ST. CLAIR COUNTY
 JOB NO. R-98-026-08
 STATION 33+01.91 TO STATION 41+32.89 (ST. CLAIR AVE.)

ILLINOIS DEPARTMENT OF TRANSPORTATION
 DIVISION OF HIGHWAYS/REGION 5/DISTRICT 8
 1102 EASTPORT PLAZA DRIVE
 COLLINSVILLE, ILLINOIS 62234-6198

F.A.P. RTE.	SECTION	COUNTY	TOTAL SHEETS	SHEET NO.
998	82-1-HBR & 82-1-2HB	ST. CLAIR	629	336

CONTRACT NO. _____
 FED. ROAD DIST. NO. _____ ILLINOIS FED. AID PROJECT _____

PARCEL NO.	OWNER	TOTAL HOLDING ACRES	FEE SIMPLE ACQUISITION		REMAINDER ACRES	EASEMENTS		PERMANENT TAX NUMBER	PROPERTY ACQUIRED BY
			GROSS ACRES	SO. FT.		PE = PERMANENT TE = TEMPORARY ACRES	SO. FT.		
8818103**	AMANDA REYNOLDS TITLE REPORT NO. SC-3590.0	0.1284	0.1284	5,592	0.00			02-18-0-110-039	BK 4086 PG 1552-1554 A01868078
8818105**	VIOLA B. SPEARMAN-BIGGERS TITLE REPORT NO. SC-3736.0	0.1606	0.1606	6,994	0.00			02-18-110-008	BK 4214 PG 1312-1314 A01924432
8826301	ST. CLAIR COUNTY AS TRUSTEE TITLE REPORT NO. SC-5442.0 DOCUMENT NO. A02121469	0.0963	0.0963	4,196	0.00			02-18-0-110-007	
8826303	THE HOUSING AUTHORITY OF THE CITY OF EAST ST. LOUIS TITLE REPORT NO. SC-5624.0 BOOK 2293 PAGES 473-475	0.1637	0.1637	7,130	0.00			02-18-0-110-017	
8826304	DISCOUNT, INC. RETIREMENT PLAN TITLE REPORT NO. SC-5630.0, DOCUMENT NO. A02014623	0.1080	0.1080	4,705	0.00			02-18-0-110-018	
8826305	ST. CLAIR COUNTY AS TRUSTEE TITLE REPORT NO. SC-5631.0, DOCUMENT NO. A02121470	0.1375	0.1375	5,990	0.00			02-18-0-110-036	
8826307	THE COUNTY BOARD OF SCHOOL TRUSTEES OF ST. CLAIR COUNTY, FOR THE BENEFIT OF SCHOOL DISTRICT NO. 189 TITLE REPORT NO. SC-5437.0, BOOK 2451 PAGE 991	0.0654				TE 0.0239	TE 1,043	02-18-0-112-061	GRADING & SIDEWALK CONSTRUCTION
8826308	O.F.S., LTD. TITLE REPORT NO. SC-5632.0, BOOK 3030 PAGE 775	0.1621	0.0302	1,314	0.1319	TE 0.0163	TE 711	02-18-0-112-059	GRADING & SIDEWALK CONSTRUCTION
8826309	ADAM ABDELJABBAR, A MARRIED PERSON TITLE REPORT NO. SC-5434.0, DOCUMENT NO. A02073162	0.6887	0.0038	164	0.6849	TE 0.0115	TE 501	02-18-0-112-057 02-18-0-112-058	GRADING & SIDEWALK CONSTRUCTION

BASELINE COORDINATE TABLE ST. CLAIR AVE.

STATION	NORTH	EAST
PT 29+78.25	14, 039, 979.2504	2, 458, 051.8054
PI 36+38.49 (ST CLAIR AVENUE) =	14, 039, 450.6200	2, 457, 589.5000
PI 4+86.87 (15TH STREET) =		
PI 40+68.86 (ST CLAIR AVENUE) =	14, 039, 450.6164	2, 457, 589.5036
PI 15+18.60 (PEDESTRIAN BRIDGE) =		
PI 41+08.55 (BK) =	14, 039, 786.1280	2, 457, 260.2720
PI 41+09.18 (AH) =		
POT 52+37.78	14, 040, 590.9000	2, 456, 469.0200

BASELINE COORDINATE TABLE PEDESTRIAN BRIDGE

STATION	NORTH	EAST
PI 9+63.46	14, 039, 621.9347	2, 457, 331.2636
PI 10+47.02	14, 039, 681.5739	2, 457, 272.7327
PI 12+21.93	14, 039, 559.0738	2, 457, 147.8959
PI 12+77.93	14, 039, 599.0441	2, 457, 108.6738
PI 14+64.97	14, 039, 730.0493	2, 457, 242.1779

STATIONING REFERENCED TO PROPOSED ST. CLAIR AVE.

COMPLETION DATE OF FIELD WORK PERFORMED
 LAND SURVEY: OCT./2009 ROW STAKING: OCT./2009

PLOT DATE = 10/19/2009
 FILE NAME = #FILES#
 PLOT SCALE = #SCALE#
 USER NAME = #USER#