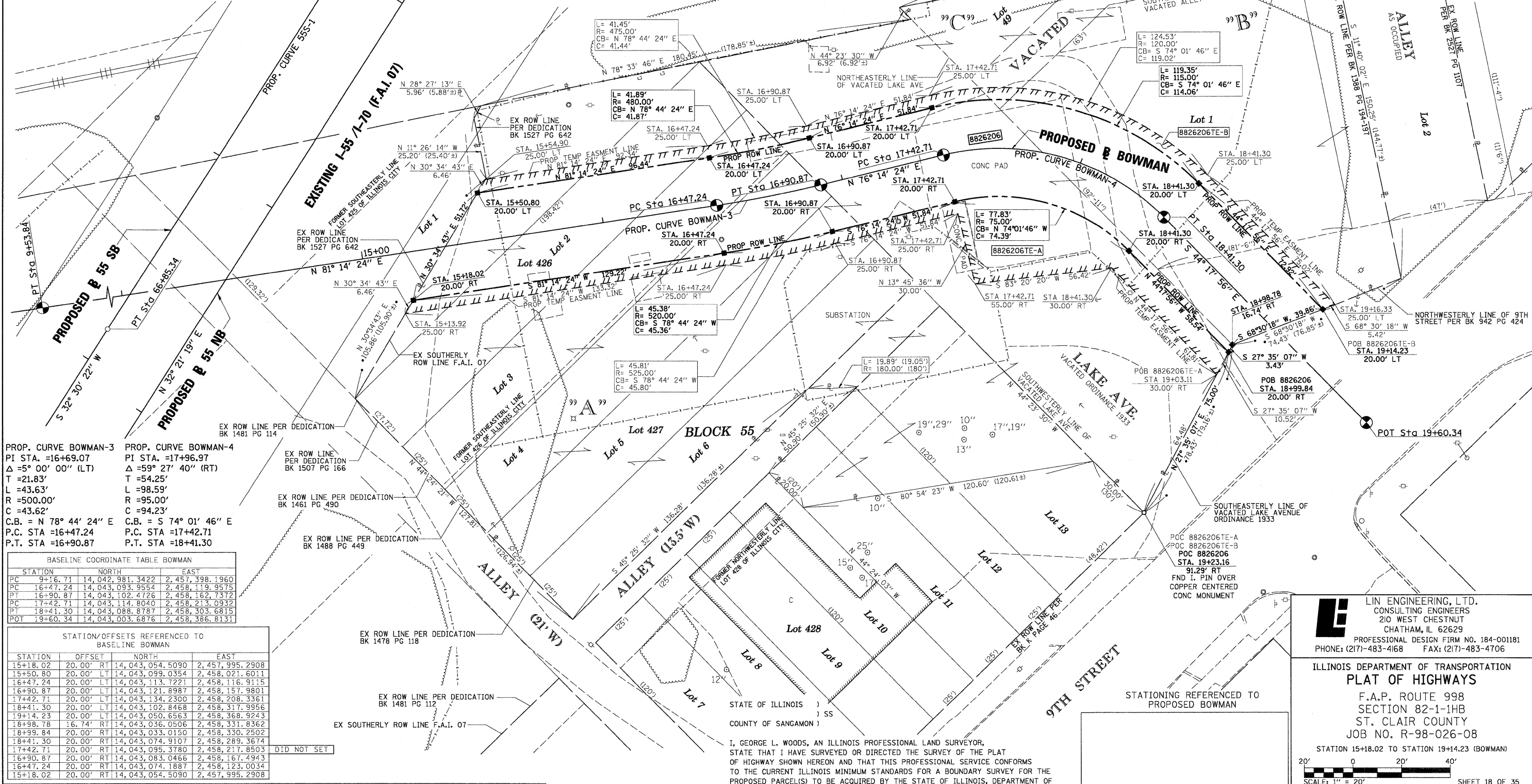


''A''
SUBDIVISION OF LOTS 427 & 428 & PART OF LOTS 425 & 426
BLOCK 55 ILLINOIS CITY
 NOW A PART OF EAST ST. LOUIS, ILL.
 (PLAT BOOK K PAGE 46)
 RECORDED MARCH 24th, 1904

''B'' ''C''
GROSS' SUBDIVISION OF LOT No. 48
CAHOKIA COMMONS
 U.S. SURVEY 777
 (PLAT BOOK "B" PAGE 47)
 RECORDED SEPTEMBER 26th 1873

''C''
LOT No. 49 CAHOKIA COMMONS PART OF U.S. SURVEY 777
 (DEED BOOK "M" PAGE 11)



PROP. CURVE BOWMAN-3
 PI STA. =16+69.07
 $\Delta = 5^\circ 00' 00''$ (LT)
 T = 21.83'
 L = 43.63'
 R = 500.00'
 C = 43.62'
 C.B. = N 78° 44' 24" E
 P.C. STA = 16+47.24
 P.T. STA = 16+90.87

PROP. CURVE BOWMAN-4
 PI STA. =17+96.97
 $\Delta = 59^\circ 27' 40''$ (RT)
 T = 54.25'
 L = 98.59'
 R = 95.00'
 C = 94.23'
 C.B. = S 74° 01' 46" E
 P.C. STA = 17+42.71
 P.T. STA = 18+41.30

BASELINE COORDINATE TABLE BOWMAN

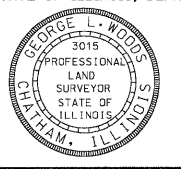
STATION	NORTH	EAST
PC 9+16.71	14,042,981.3422	2,457,398.1960
PC 16+47.24	14,043,093.9554	2,458,119.9575
PT 16+90.87	14,043,102.4726	2,458,162.7372
PC 17+42.71	14,043,114.8040	2,458,213.0932
PT 18+41.30	14,043,088.8787	2,458,303.6815
POT 19+60.34	14,043,003.6876	2,458,386.8131

STATION/OFFSETS REFERENCED TO BASELINE BOWMAN

STATION	OFFSET	NORTH	EAST
15+18.02	20.00' RT	14,043,054.5090	2,457,995.2908
15+50.80	20.00' LT	14,043,099.0354	2,458,021.6011
16+47.24	20.00' LT	14,043,113.7221	2,458,116.9115
16+90.87	20.00' LT	14,043,121.8987	2,458,157.9801
17+42.71	20.00' LT	14,043,134.2300	2,458,208.3361
18+41.30	20.00' LT	14,043,102.8468	2,458,317.9956
19+14.23	20.00' LT	14,043,050.6563	2,458,368.9243
18+98.78	16.74' RT	14,043,036.0506	2,458,331.8362
18+99.84	20.00' RT	14,043,033.0150	2,458,330.2502
18+41.30	20.00' RT	14,043,074.9107	2,458,289.3674
17+42.71	20.00' RT	14,043,095.3780	2,458,217.8503
16+90.87	20.00' RT	14,043,083.0466	2,458,167.4943
16+47.24	20.00' RT	14,043,074.1887	2,458,123.0034
15+18.02	20.00' RT	14,043,054.5090	2,457,995.2908

PARCEL NO.	OWNER	TOTAL HOLDING		REMAINDER	EASEMENTS		PERMANENT TAX NUMBER	PROPERTY ACQUIRED BY
		ACRES	SQ. FT.		ACRES	SQ. FT.		
8826206	CENTRAL ILLINOIS PUBLIC SERVICE COMPANY d/b/a AMERICANS TITLE REPORT NO. SC-6011 BOOK 4172 PAGE 1209-1211, 1301-1303, 1491-1492, 1583-1585	1.6655	14,860	1.3244	TE-A 0.0814 TE-B 0.0441	TE-A 3,544 TE-B 1,919	02-07-0-402-043 02-07-0-403-001 02-07-0-403-002 02-07-0-403-004	

I, GEORGE L. WOODS, AN ILLINOIS PROFESSIONAL LAND SURVEYOR, STATE THAT I HAVE SURVEYED OR DIRECTED THE SURVEY OF THE PLAT OF HIGHWAY SHOWN HEREON AND THAT THIS PROFESSIONAL SERVICE CONFORMS TO THE CURRENT ILLINOIS MINIMUM STANDARDS FOR A BOUNDARY SURVEY FOR THE PROPOSED PARCEL(S) TO BE ACQUIRED BY THE STATE OF ILLINOIS, DEPARTMENT OF TRANSPORTATION, SHOWN HEREON.



DATED _____
 GEORGE L. WOODS, PLS NO. 3015
 LICENSE EXPIRATION DATE: 11/30/2010

LIN ENGINEERING, LTD.
 CONSULTING ENGINEERS
 210 WEST CHESTNUT
 CHATHAM, IL 62629
 PROFESSIONAL DESIGN FIRM NO. 184-001181
 PHONE: (217)-483-4168 FAX: (217)-483-4706

ILLINOIS DEPARTMENT OF TRANSPORTATION
PLAT OF HIGHWAYS
 F.A.P. ROUTE 998
 SECTION 82-1-1HB
 ST. CLAIR COUNTY
 JOB NO. R-98-026-08

STATION 15+18.02 TO STATION 19+14.23 (BOWMAN)
 SCALE: 1" = 20'
 SHEET 18 OF 35

F.A.P. RTE.	SECTION	COUNTY	TOTAL SHEETS	SHEET NO.
998	82-1-1HB	ST. CLAIR	629	322

CONTRACT NO. _____

COMPLETION DATE OF FIELD WORK PERFORMED
 LAND SURVEY: OCT./2009 ROW STAKING: OCT./2009