

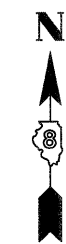
"A"
 FISCHER SCHEIN CO'S SUBD
 OF LOTS 33 & 34 AND PARTS
 OF LOTS 35, 39, & 40 OF BLOCK 17
 ILLINOIS CITY EAST ST. LOUIS ILLS.

"B"
 ILLINOIS CITY
 PLAT BOOK E PAGE 301 & 302
 RECORDED JULY 2nd 1825

PLAT BOOK P PAGE 56
 RECORDED 27th JULY 1910

PROP. CURVE 55S70W-3
 PI STA. = 67+79.76
 Δ = 36° 19' 13" (RT)
 T = 439.54'
 L = 849.44'
 R = 1,340.00'
 C = 835.29'
 C.B. = N 89° 14' 25" W
 P.C. STA = 63+40.22
 P.T. STA = 71+89.66

PROP. CURVE 55S70W-4
 PI STA. = 81+39.12
 Δ = 26° 52' 21" (RT)
 T = 681.35'
 L = 1,337.63'
 R = 2,852.00'
 C = 1,325.40'
 C.B. = N 57° 38' 38" W
 P.C. STA = 74+57.77
 P.T. STA = 87+95.40

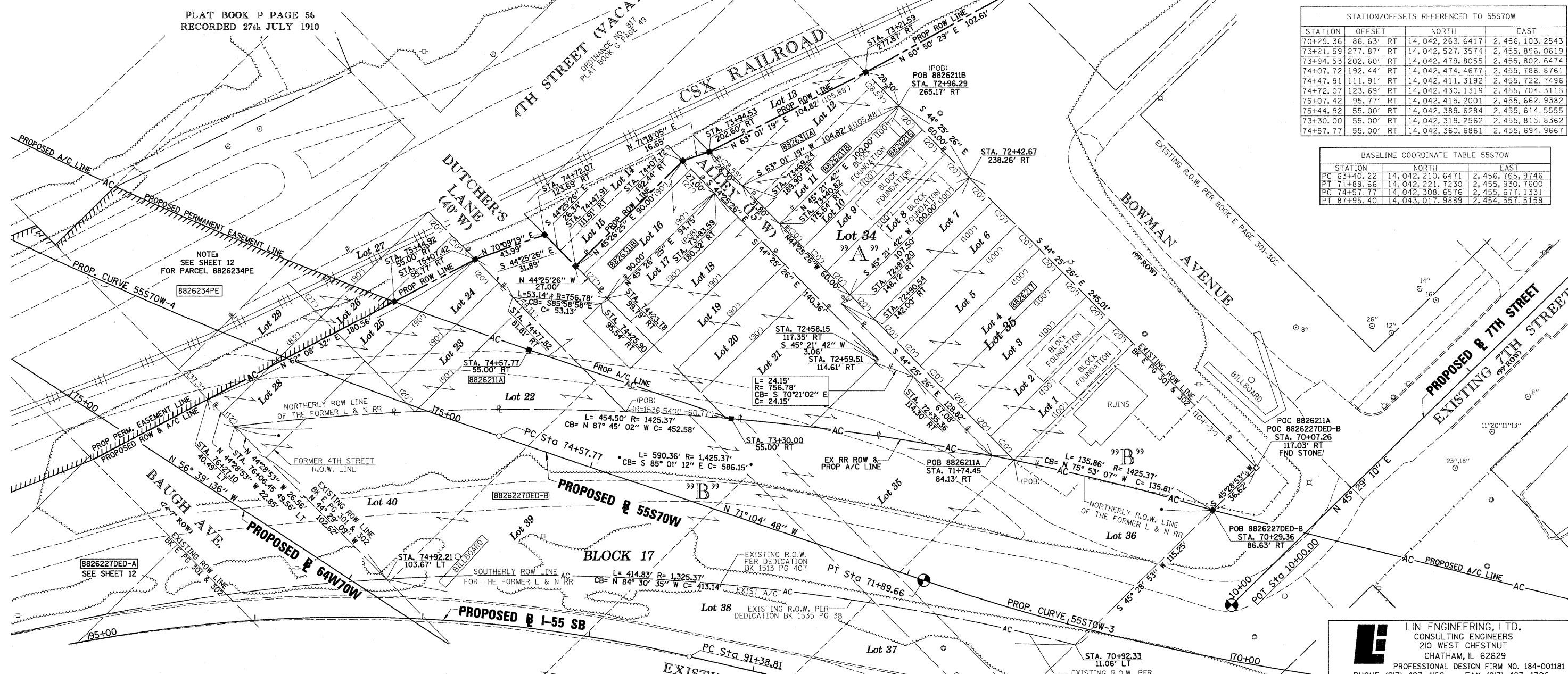


STATION/OFFSETS REFERENCED TO 55S70W

STATION	OFFSET	NORTH	EAST
70+29.36	86.63' RT	14,042,263.6417	2,456,103.2543
73+21.59	277.87' RT	14,042,527.3574	2,455,896.0619
73+94.53	202.60' RT	14,042,479.8055	2,455,802.6474
74+07.72	192.44' RT	14,042,474.4677	2,455,786.8761
74+47.91	111.91' RT	14,042,411.3192	2,455,722.7496
74+72.07	123.69' RT	14,042,430.1319	2,455,704.3115
75+07.42	95.77' RT	14,042,415.2001	2,455,662.9382
75+44.92	55.00' RT	14,042,389.6284	2,455,614.5555
73+30.00	55.00' RT	14,042,319.2562	2,455,815.8362
74+57.77	55.00' RT	14,042,360.6861	2,455,694.9667

BASELINE COORDINATE TABLE 55S70W

STATION	NORTH	EAST
PC 63+40.22	14,042,210.6471	2,456,765.9746
PT 71+89.66	14,042,221.7230	2,455,930.7600
PC 74+57.77	14,042,308.6576	2,455,677.1331
PT 87+95.40	14,043,017.9889	2,454,557.5159



NOTE:
 SEE SHEET 12 FOR PARCELS 8826227DED-A
 & 8826227DED-B PARCEL TABLE INFORMATION

PARCEL NO.	OWNER	TOTAL HOLDING ACRES	FEE SIMPLE ACQUISITION		REMAINDER ACRES	PERMANENT TAX NUMBER	PROPERTY ACQUIRED BY
			GROSS ACRES	SQ. FT.			
8826211	CSX TRANSPORTATION, INC. TITLE REPORT NO. SC-5633.3, SC-5456.0 & SC-5438.0 BK 2542 PG 2128-2130, BK 2508 PG 662, BK 2509 PG 2300, BK 2509 PG 2347, BK 1055 PG 187	0.7466	A=0.7101 B=0.0365	A=30,934 B=1,590		02-07-0-306-017 02-07-0-306-018 02-07-0-306-019 02-07-0-306-020 02-07-0-306-021 02-07-0-306-022 02-07-0-306-023 02-07-0-306-024 02-07-0-500-004(p)	
8826216	MID AMERICA REAL ESTATE & DEVELOPMENT, INC. TITLE REPORT NO. SC-5461.0 BOOK 3625 PAGE 1907 & BOOK 3320 PAGE 1474	0.1377	0.1377	6,000	0.0000	02-07-0-306-037	
8826217	ARROW REALTY, INC. TITLE REPORT NO. SC-5462.0 BOOK 3324 PAGE 951	0.5066	0.5066	22,070	0.0000	02-07-0-306-038	
8826311	CITY OF EAST ST. LOUIS, ST. CLAIR COUNTY, ILLINOIS TITLE REPORT NO. SC-5425.0, BOOK 1054 PAGE 296	0.1208	A=0.0650 B=0.0558	A=2,830 B=2,430	0.0000	NONE	

* SEE TOTAL HOLDING AREA
 SOURCE TABLE ON SHEET 2

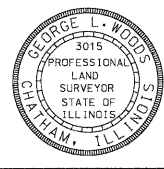
STATE OF ILLINOIS)
) SS
 COUNTY OF SANGAMON)

I, GEORGE L. WOODS, AN ILLINOIS PROFESSIONAL LAND SURVEYOR,
 STATE THAT I HAVE SURVEYED OR DIRECTED THE SURVEY OF THE PLAT
 OF HIGHWAY SHOWN HEREON AND THAT THIS PROFESSIONAL SERVICE CONFORMS
 TO THE CURRENT ILLINOIS MINIMUM STANDARDS FOR A BOUNDARY SURVEY FOR THE
 PROPOSED PARCEL(S) TO BE ACQUIRED BY THE STATE OF ILLINOIS, DEPARTMENT OF
 TRANSPORTATION, SHOWN HEREON.

DATED _____

GEORGE L. WOODS, PLS NO. 3015
 LICENSE EXPIRATION DATE: 11/30/2010

SPACE RESERVED FOR RECORDING OFFICER



L LIN ENGINEERING, LTD.
 CONSULTING ENGINEERS
 210 WEST CHESTNUT
 CHATHAM, IL 62629
 PROFESSIONAL DESIGN FIRM NO. 184-001181
 PHONE: (217)-483-4168 FAX: (217)-483-4706

ILLINOIS DEPARTMENT OF TRANSPORTATION
PLAT OF HIGHWAYS
 FAP ROUTE 998
 SECTION N/A
 ST. CLAIR COUNTY
 JOB NO. R-98-026-08

STATION 70+07.26 TO STATION 76+27.10 (55S70W)
 SCALE: 1" = 30'
 SHEET 14 OF 35

F.A.P. RTE.	SECTION	COUNTY	TOTAL SHEETS	SHEET NO.
998	N/A	ST. CLAIR	629	318

CONTRACT NO. _____

STATIONING REFERENCED TO
 PROPOSED 55S70W = (70WB)

COMPLETION DATE OF FIELD WORK PERFORMED
 LAND SURVEY: OCT./2009 ROW STAKING: OCT./2009