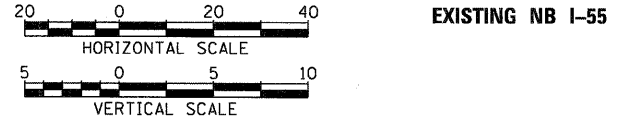
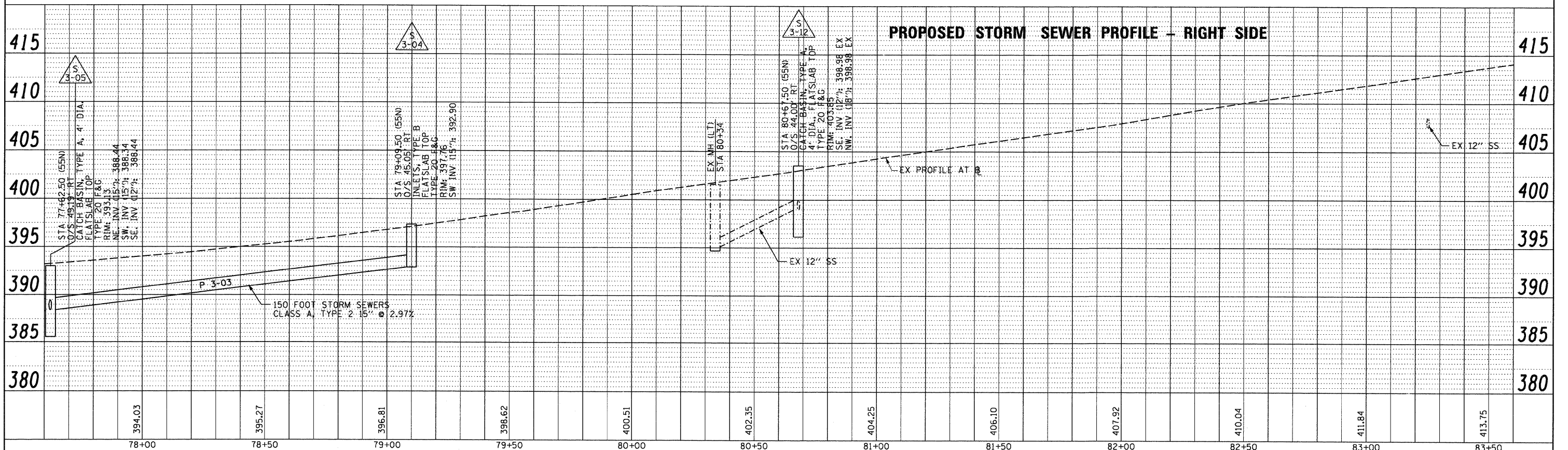
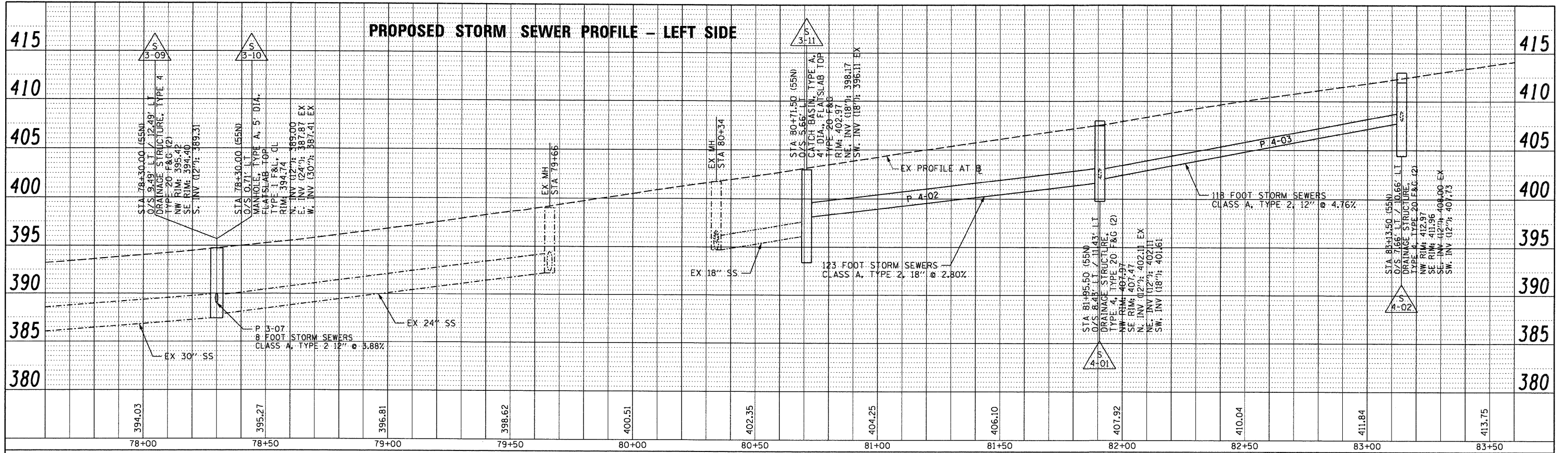


PLAN	SURVEYED	DATE
	PLOTTED	BY
	NOTED	
	NO. 1	
	NO. 2	
	NO. 3	
	NO. 4	
	NO. 5	
	NO. 6	
	NO. 7	
	NO. 8	
	NO. 9	
	NO. 10	
	NO. 11	
	NO. 12	
	NO. 13	
	NO. 14	
	NO. 15	
	NO. 16	
	NO. 17	
	NO. 18	
	NO. 19	
	NO. 20	
	NO. 21	
	NO. 22	
	NO. 23	
	NO. 24	
	NO. 25	
	NO. 26	
	NO. 27	
	NO. 28	
	NO. 29	
	NO. 30	
	NO. 31	
	NO. 32	
	NO. 33	
	NO. 34	
	NO. 35	
	NO. 36	
	NO. 37	
	NO. 38	
	NO. 39	
	NO. 40	
	NO. 41	
	NO. 42	
	NO. 43	
	NO. 44	
	NO. 45	
	NO. 46	
	NO. 47	
	NO. 48	
	NO. 49	
	NO. 50	

PROFILE	SURVEYED	DATE
	PLOTTED	BY
	NOTED	
	NO. 1	
	NO. 2	
	NO. 3	
	NO. 4	
	NO. 5	
	NO. 6	
	NO. 7	
	NO. 8	
	NO. 9	
	NO. 10	
	NO. 11	
	NO. 12	
	NO. 13	
	NO. 14	
	NO. 15	
	NO. 16	
	NO. 17	
	NO. 18	
	NO. 19	
	NO. 20	
	NO. 21	
	NO. 22	
	NO. 23	
	NO. 24	
	NO. 25	
	NO. 26	
	NO. 27	
	NO. 28	
	NO. 29	
	NO. 30	
	NO. 31	
	NO. 32	
	NO. 33	
	NO. 34	
	NO. 35	
	NO. 36	
	NO. 37	
	NO. 38	
	NO. 39	
	NO. 40	
	NO. 41	
	NO. 42	
	NO. 43	
	NO. 44	
	NO. 45	
	NO. 46	
	NO. 47	
	NO. 48	
	NO. 49	
	NO. 50	

PROPOSED STORM SEWER PROFILE - LEFT SIDE

PROPOSED STORM SEWER PROFILE - RIGHT SIDE



FILE NAME = DBTRI-76C52-Sht-Prof-Drain-24-NB55-84.dgn	USER NAME = searsb	DESIGNED - MAN	REVISOR -	STATE OF ILLINOIS DEPARTMENT OF TRANSPORTATION	DRAINAGE PROFILE NB I-55	F.A. RTE.	SECTION	COUNTY	TOTAL SHEETS	SHEET NO.
PLLOT SCALE = 40.000' / in.	PLLOT DATE = 1/24/2012	DRAWN - CJS	REVISOR -			82-1-RAI, 82-1-R(B)	ST. CLAIR	629	291	
		CHECKED - JF	REVISOR -			64/998/70	CONTRACT NO. 76C52			
		DATE - 1-20-12	REVISOR -			FED. ROAD DIST. NO.	ILLINOIS	FED. AID PROJECT		

SCALE: H: 20 V: 5 SHEET NO. 24 OF 32 SHEETS STA. 77+60.00 TO STA. 83+60.00