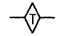

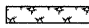


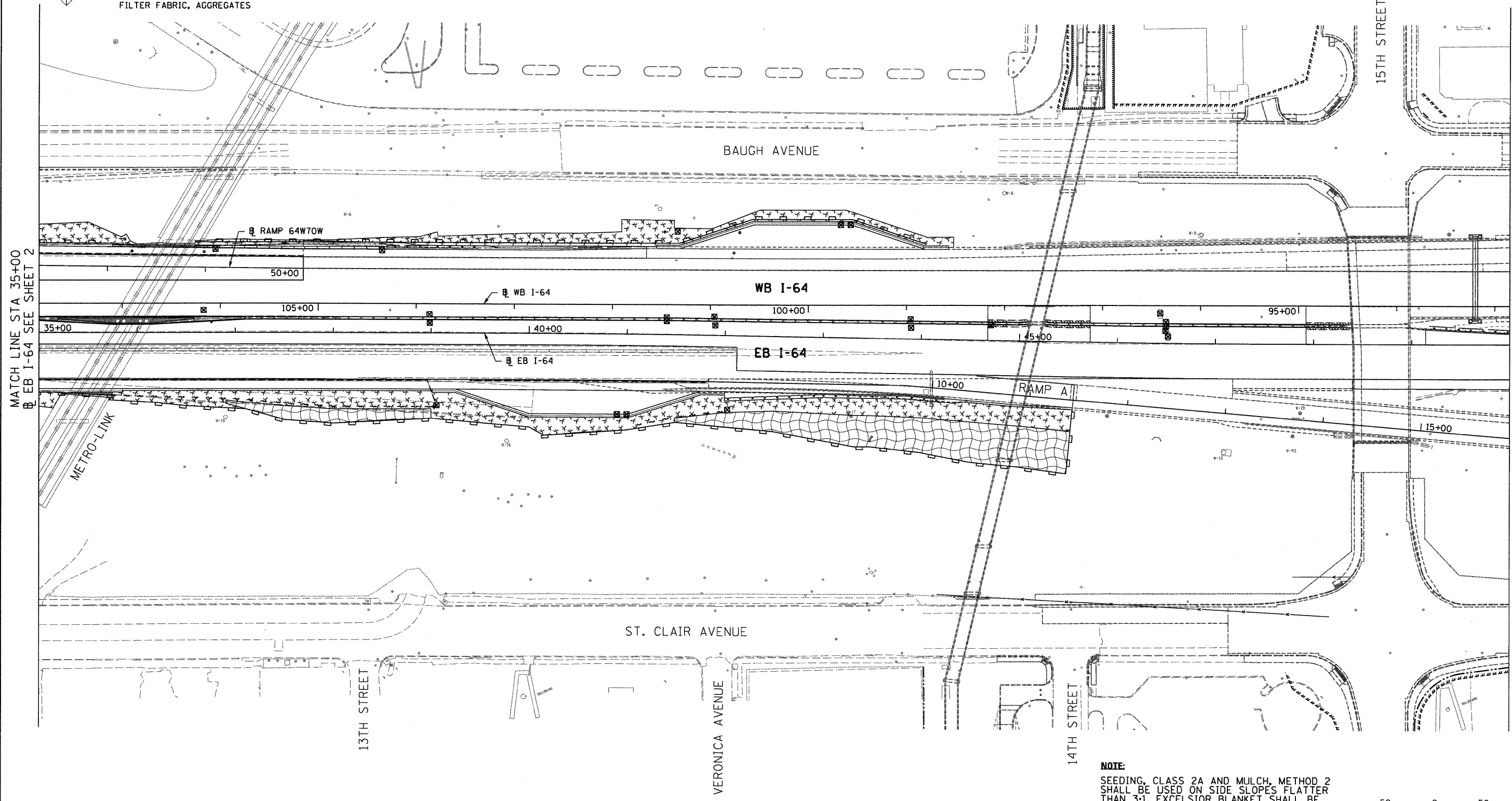
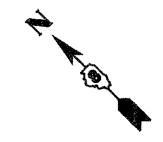


LEGEND

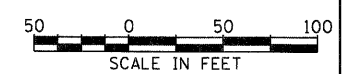
-  TEMPORARY DITCH CHECK- ROLLED EXCELSIOR, SILT WEDGES
-  EROSION CONTROL BLANKET - EXCELSIOR BLANKET
-  TEMPORARY EROSION CONTROL SEEDING (INCLUDES MULCH, METHOD 2)
-  PERIMETER EROSION BARRIER- SILT FILTER FENCE OR OTHER AS APPROVED BY THE ENGINEER
-  INLET AND PIPE PROTECTION- STRAW BALES, FILTER FABRIC, AGGREGATES



MATCH LINE STA 35+00
EB I-64 SEE SHEET 2

MATCH LINE STA 50+00
EB I-64 SEE SHEET 4

NOTE:
SEEDING, CLASS 2A AND MULCH, METHOD 2 SHALL BE USED ON SIDE SLOPES FLATTER THAN 3:1. EXCELSIOR BLANKET SHALL BE USED ON 3:1 SIDE SLOPES.



FILE NAME = DBT-r-76C52-ah-Eros-03.dgn	USER NAME = searsb	DESIGNED KK	REVISED -	STATE OF ILLINOIS DEPARTMENT OF TRANSPORTATION	EROSION CONTROL PLAN - I-64	F.A.I. RTE.	SECTION	COUNTY	TOTAL SHEETS	SHEET NO.	
	PLOT SCALE = 100,0000' / 1" =	DRAWN BS	REVISED -			• 82-1-RIA), 82-1-R(B)	ST. CLAIR	629	242		
	PLOT DATE = 1/24/2012	CHECKED DBM	REVISED -			• 64/998/70	CONTRACT NO. 76C52				
		DATE 1-20-12	REVISED -			FED. ROAD DIST. NO.	ILLINOIS	FED. AID PROJECT			
SCALE: 1" = 50'						SHEET NO. 3 OF 7 SHEETS		STA. 35+00 TO STA. 50+00			