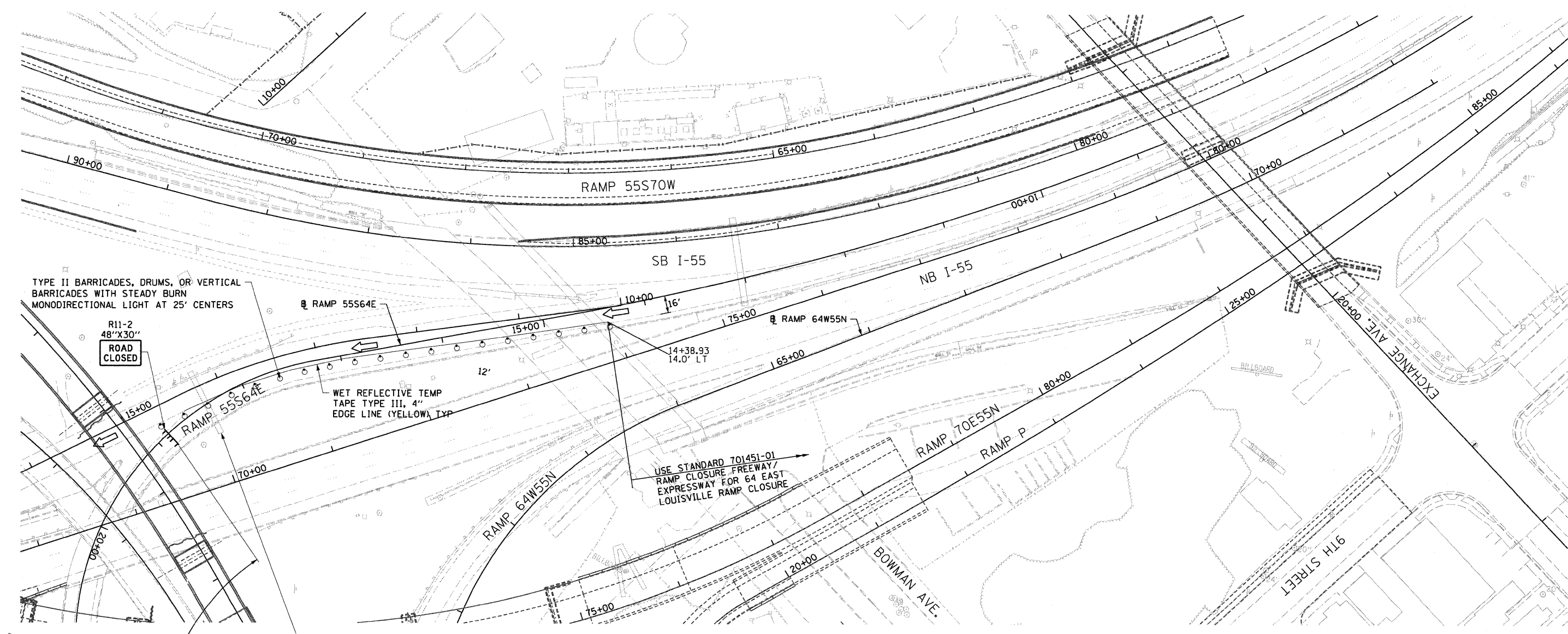


NOTES:

- RAMP 55S64E SHALL BE CLOSED FROM STAGE 2 TO STAGE 4. USE STANDARD 701451 FOR RAMP CLOSURE FREEWAY/EXPRESSWAY FOR EB I-64 TO LOUISVILLE RAMP CLOSURE
- SEE I-55 MAINLINE STAGE 2 DRAWINGS FOR ADDITIONAL TRAFFIC CONTROL ON I-55



TYPE II BARRICADES, DRUMS, OR VERTICAL BARRICADES WITH STEADY BURN MONODIRECTIONAL LIGHT AT 25' CENTERS

R11-2
48"X30"
ROAD
CLOSED

RAMP 55S64E

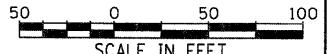
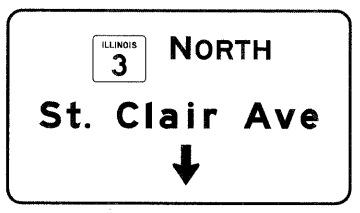
WET REFLECTIVE TEMP TAPE TYPE III, 4" EDGE LINE (YELLOW) TYP

USE STANDARD 701451-01 RAMP CLOSURE FREEWAY/EXPRESSWAY FOR 64 EAST LOUISVILLE RAMP CLOSURE

SEE SHEET 16 OF 54 FOR ADDITIONAL INFORMATION FOR RAMP CLOSURE



COVER SIGN PANEL FOR EXIT TO RAMP 55S64E



FILE NAME = DBT-r-76C52-sht-Stage2-06.dgn

USER NAME = searsb
PLOT SCALE = 100.0000' / in.
PLOT DATE = 1/24/2012

DESIGNED KM
DRAWN PHP
CHECKED DBM
DATE 1-20-12

REVISED -
REVISED -
REVISED -
REVISED -

**STATE OF ILLINOIS
DEPARTMENT OF TRANSPORTATION**

I-64 MAINLINE - SUGGESTED STAGES OF CONSTRUCTION AND TRAFFIC CONTROL PLAN - STAGE 2

SCALE: 1" = 50' SHEET NO. 19 OF 54 SHEETS STA. TO STA.

F.A.I. RTE.	SECTION	COUNTY	TOTAL SHEETS	SHEET NO.
64/998/70	82-1-R(A), 82-1-R(B)	ST. CLAIR	629	200
FED. ROAD DIST. NO. ILLINOIS FED. AID PROJECT			CONTRACT NO. 76C52	