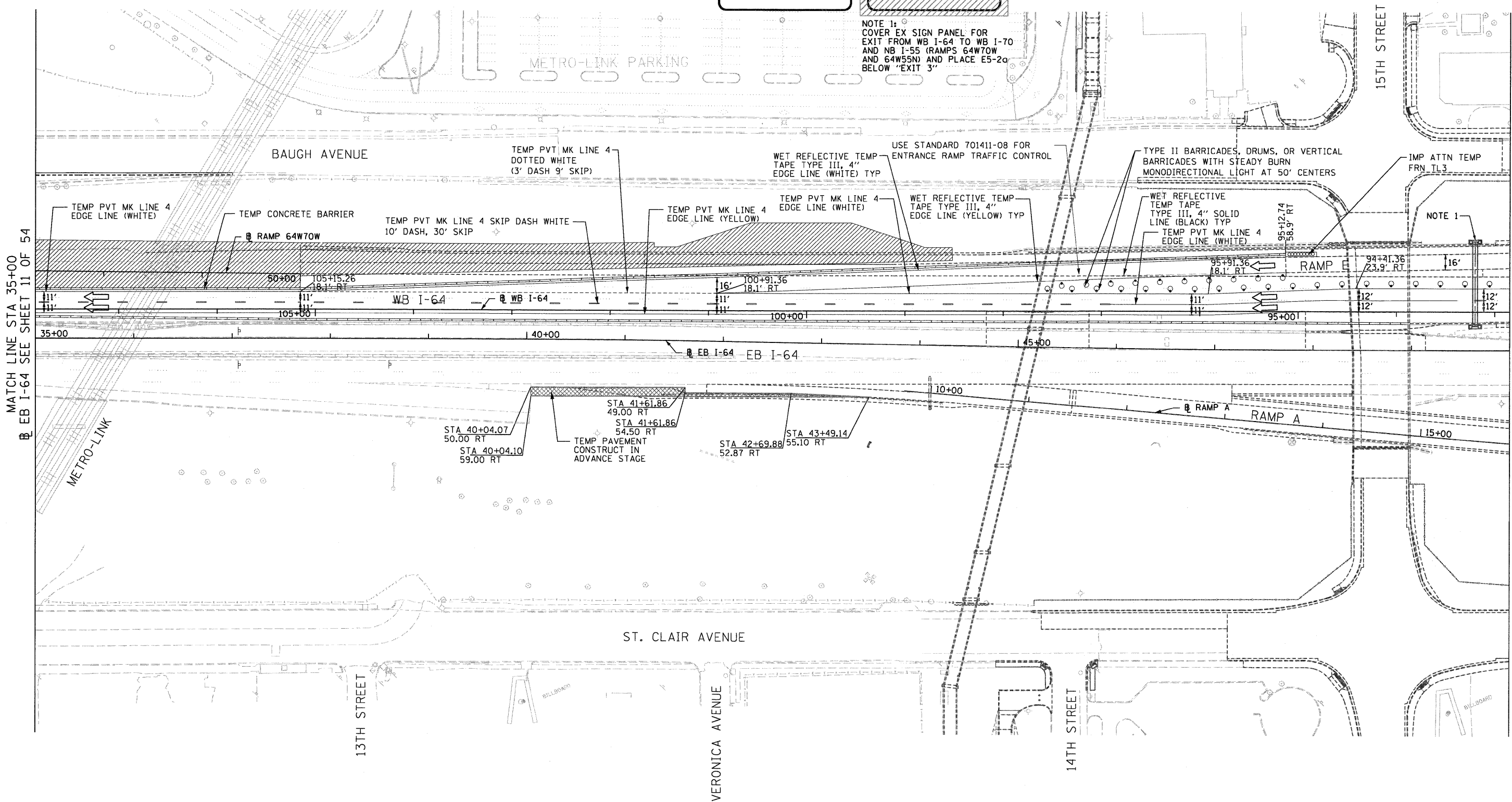
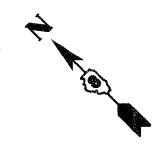


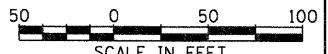


NOTE 1:
COVER EX SIGN PANEL FOR
EXIT FROM WB I-64 TO WB I-70
AND NB I-55 (RAMPS 64W70W
AND 64W55N) AND PLACE E5-20
BELOW "EXIT 3"



MATCH LINE STA 35+00
EB I-64 SEE SHEET 11 OF 54

MATCH LINE STA 50+00
EB I-64 SEE SHEET 13 OF 54



FILE NAME = 08Trj-76C52-sht-Stage1-06.dgn	USER NAME = sear-sb	DESIGNED KM	REVISED -	STATE OF ILLINOIS DEPARTMENT OF TRANSPORTATION	I-64 MAINLINE - SUGGESTED STAGES OF CONSTRUCTION AND TRAFFIC CONTROL PLAN - STAGE 1			F.A.I. RTE.	SECTION	COUNTY	TOTAL SHEETS	SHEET NO.
	PLOT SCALE = 100,0000' / in.	DRAWN PHP	REVISED -					• 82-1-R(A), 82-1-R(B)	ST. CLAIR	629	193	
	PLOT DATE = 1/24/2012	CHECKED DBM	REVISED -					• 64/998/70	CONTRACT NO. 76C52			
	DATE 1-20-12		REVISED -		SCALE: 1" = 50'	SHEET NO. 12 OF 54 SHEETS	STA. 35+00	TO STA. 50+00	FED. ROAD DIST. NO.	ILLINOIS FED. AID PROJECT		