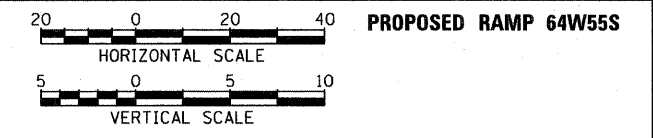
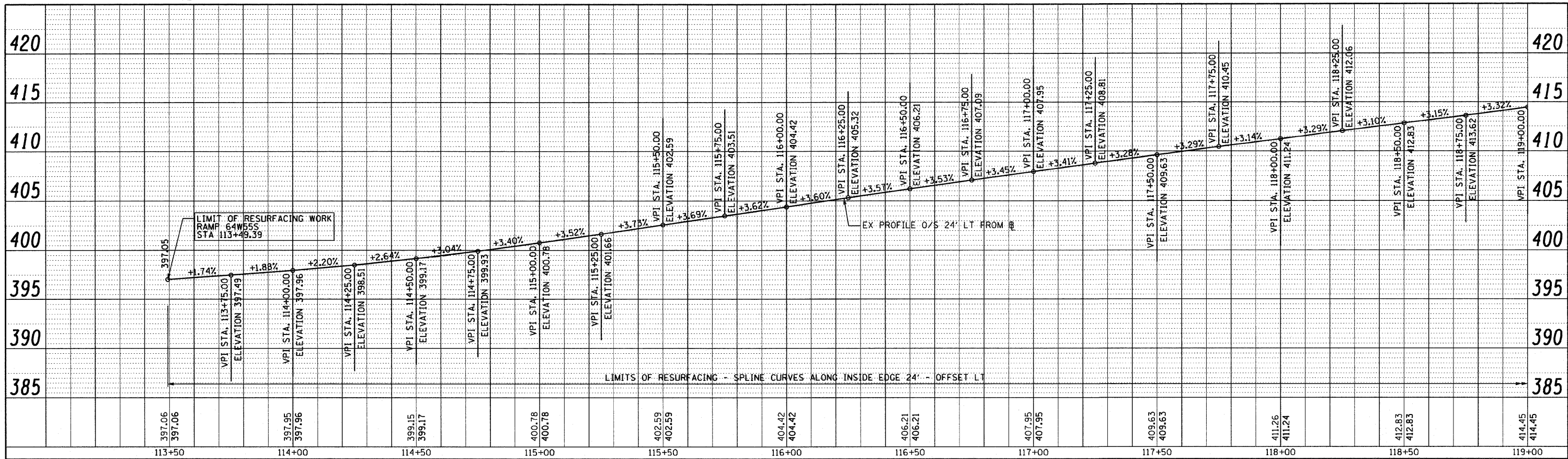
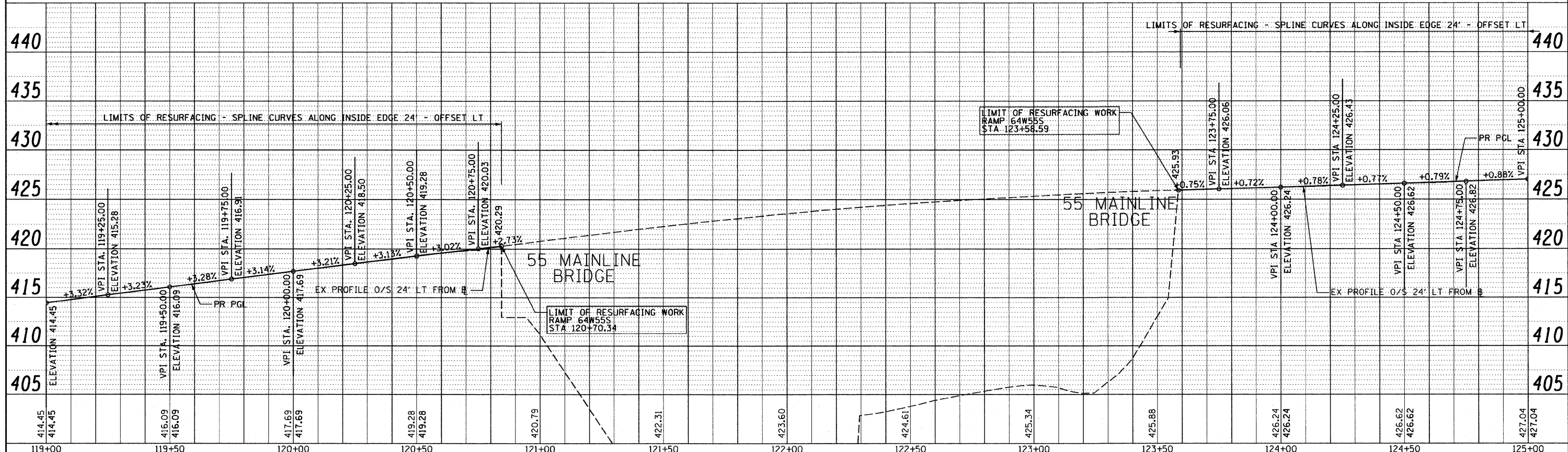


PLAN	SURVEYED	DATE
NOTE BOOK NO.	PLOTTED	
	GRADED	
	BY	
	FILE NAME	



PROFILE	SURVEYED	DATE
NOTE BOOK NO.	PLOTTED	
	GRADED	
	BY	
	FILE NAME	



FILE NAME = D8Tr-76C52-shr-Prof-64W555-01.dgn	USER NAME = sear-sb	DESIGNED - SH	REVISED -	<b>STATE OF ILLINOIS DEPARTMENT OF TRANSPORTATION</b>	<b>ROADWAY PROFILE RAMP 64W55S</b>	F.A. RTE.	SECTION	COUNTY	TOTAL SHEETS	SHEET NO.
PLOT SCALE = 40.0000' / 1"	CHECKED - DBM	REVISED -	• 82-1-RIA, 82-1-RIB			ST. CLAIR	629	122		
PLOT DATE = 2/3/2012	DATE - 1-20-12	REVISED -	• 64/998/70			CONTRACT NO. 76C52				
			FED. ROAD DIST. NO. [ILLINOIS] FED. AID PROJECT							

SCALE: H: 20 V: 5 SHEET NO. 1 OF 2 SHEETS STA. 113+49.39 TO STA. 125+00