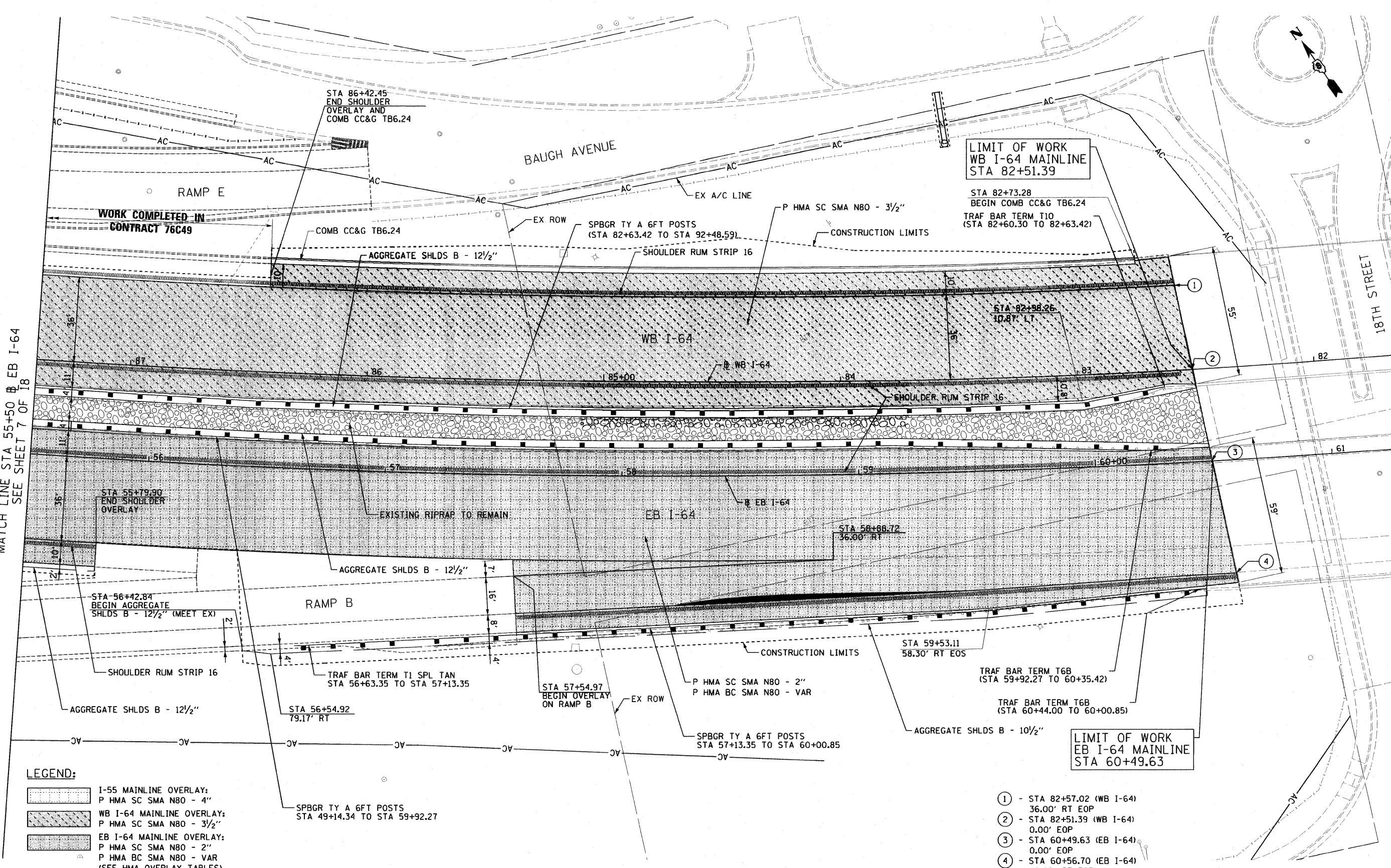


MATCH LINE STA 55+50 @ EB I-64
SEE SHEET 7 OF 18



- LEGEND:**
- I-55 MAINLINE OVERLAY:
P HMA SC SMA N80 - 4"
 - WB I-64 MAINLINE OVERLAY:
P HMA SC SMA N80 - 3 1/2"
 - EB I-64 MAINLINE OVERLAY:
P HMA SC SMA N80 - 2"
P HMA BC SMA N80 - VAR
(SEE HMA OVERLAY TABLES)

- ① - STA 82+57.02 (WB I-64)
36.00' RT EOP
- ② - STA 82+51.39 (WB I-64)
0.00' EOP
- ③ - STA 60+49.63 (EB I-64)
0.00' EOP
- ④ - STA 60+56.70 (EB I-64)
48.00' RT EOP



FILE NAME = 08Tr-76C52-sht-plan-88.dgn	USER NAME = searsb	DESIGNED OP	REVISIONS	STATE OF ILLINOIS DEPARTMENT OF TRANSPORTATION	ROADWAY PLAN EB I-64 & WB I-64			F.A.I. RTE.	SECTION	COUNTY	TOTAL SHEETS	SHEET NO.
	PLOT SCALE = 40,0000' / 1"	DRAWN PHP	REVISIONS		SCALE: 1" = 20'	SHEET NO. 8 OF 18 SHEETS	STA. 55+00 TO STA. 61+00	• 82-1-R(A), 82-1-R(B)	ST. CLAIR	629	98	
	PLOT DATE = 2/3/2012	CHECKED DBM	REVISIONS					• 64/998/70	CONTRACT NO. 76C52			
		DATE 1-20-12	REVISIONS					FED. ROAD DIST. NO. [ILLINOIS] FED. AID PROJECT				